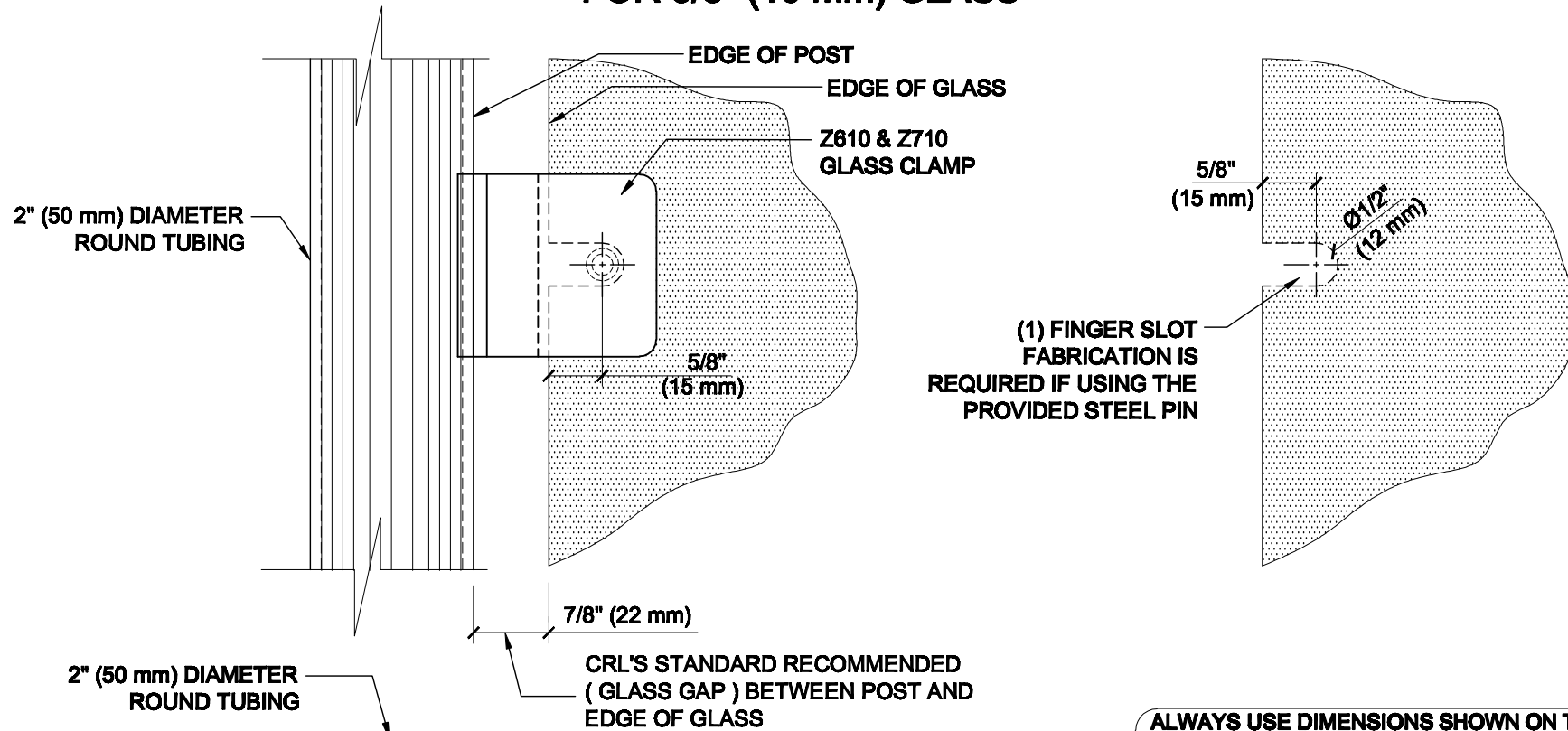


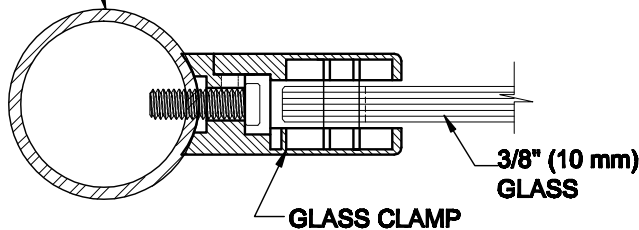
# GLASS FABRICATION TEMPLATE FOR THE Z-SERIES SQUARE TYPE RADIUS BASE CLAMPS FOR 3/8" (10 mm) GLASS



ALWAYS USE DIMENSIONS SHOWN ON THE PLAN.  
DO NOT SCALE OR DIMENSION ACTUAL DRAWING  
TO ENSURE ACCURACY

## GLASS FABRICATION TEMPLATE USED FOR:

CATALOG NUMBER	TUBE DIA
Z610BR	2" (50.8 mm) ONLY
Z610CH	2" (50.8 mm) ONLY
Z610SC	2" (50.8 mm) ONLY
Z610BN	2" (50.8 mm) ONLY
Z610GP	2" (50.8 mm) ONLY
Z610W	2" (50.8 mm) ONLY
Z710BS	2" (50.8 mm) ONLY
Z710PS	2" (50.8 mm) ONLY



## SPECIFICATIONS:

**GLASS THICKNESS:** MODELS FOR 3/8" (10 mm) GLASS.

**BASE DESIGN:** RADIUS BACK

**FOR USE WITH:** 2" (50.8 mm) DIAMETER ROUND TUBING ONLY.

**MATERIAL:** CHOICE OF ZINC CONSTRUCTED OR STAINLESS STEEL. STAINLESS STEEL OR POWDER PAINTED ZINC CLAMPS ARE RECOMMENDED FOR MORE DURABILITY IN EXTERIOR APPLICATIONS.

**GLASS FABRICATION:** FOR 3/8" (10mm), THICK GLASS. 1/2" (12mm)

FINGER SLOT REQUIRED IF USING PROVIDED STEEL PIN FOR GLASS SUPPORT

**INCLUDES:** RUBBER GASKETS AND STEEL PIN (FOR OPTIONAL USE) WITH GROMMET.

**CRL**  
C.R. LAURENCE CO.



ARCHITECTURAL PRODUCTS  
PH: 800-421-6144 FX: 800-262-3299  
WWW.CRLAURENCE.COM

## DESCRIPTION:

Z-SERIES SQUARE TYPE RADIUS BASE GLASS CLAMP

FOR 3/8" (10 mm) THICK GLASS

CAT. NO: (SEE CHART)

DATE: 10/23/09

FILE NAME: Z610-Gls Fab REV

SCALE: N.T.S.

DRAWN BY: R.A.

CHECKED BY: C.H.

SHT 1 OF 1