

Locks & File Frame for wood furniture & cabinets



Welcome to CompX Timberline



What are we all about?

- **Locks for Wood Furniture and Cabinets**

We can lock desks, credenzas, files, store fixtures, lockers, and cabinets of all types.

- **File Frame System for Hanging Files**

Completely engineered, attractive system which maximizes filing capabilities.

- **Made in the USA**

Manufactured and assembled in Grayslake, IL.

- **High Quality & Great Service**

All locks are made from the finest materials ... Our customer service is the best!

- **Next Day Shipment**

Most items ship within one business day.

- **No Minimums**

Whether you need 1 lock or 10,000, we want to be your lock supplier!

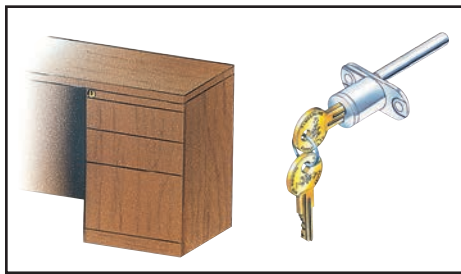


Want Samples?
Need Help?
Don't See What You Need?

Call Us Today
1-800-LOCKBAR
or Email Us at
timberlineorders@compx.com



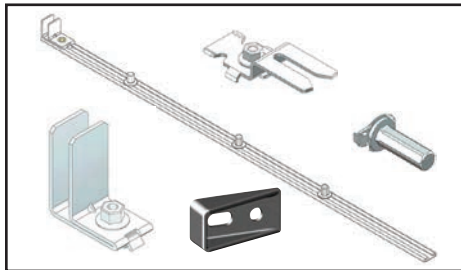
LOCKING SYSTEMS FOR WOOD FURNITURE



Front Gang Lock
.....Page 6



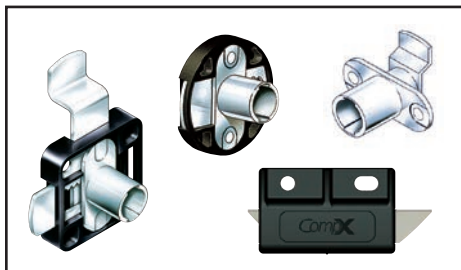
**Side Gang Locks
& Central Locks**
.....Page 10



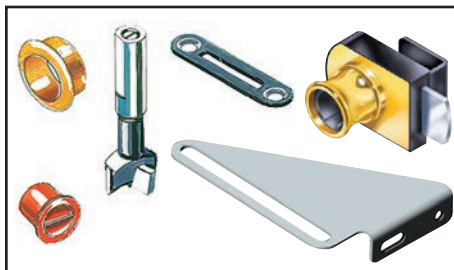
**Gang Lock
Components and
Custom Lockbar**
.....Page 12



**Lateral File Locks
and Anti-Tip Systems**
.....Page 14



**Deadbolt Locks,
Cam Locks and
Double Door Latch**
.....Page 19



**Glass Door Locks,
Accessories and
Strike Plates**
.....Page 27



StealthLock®
.....Page 30



File Frame System
.....Page 33

Lock Finishes:



Polished
Nickel
LP-100



Old
English
LP-200



Black
LP-300



Statuary
Bronze
LP-400



Polished
Brass
LP-500



Satin
Nickel
LP-700



White
LP-800

Lock Features:

- Small Diameter
- High Quality/Long Life
- 5 Disk Tumbler Lock Plug
- Solid Brass Keys
- Numbered on Face & Keys
- Over 500 Changes
- Master-Keyed
- Removable Lock Plug



TIMBERLINE REMOVABLE LOCK PLUG SYSTEM

Complete Keying Versatility

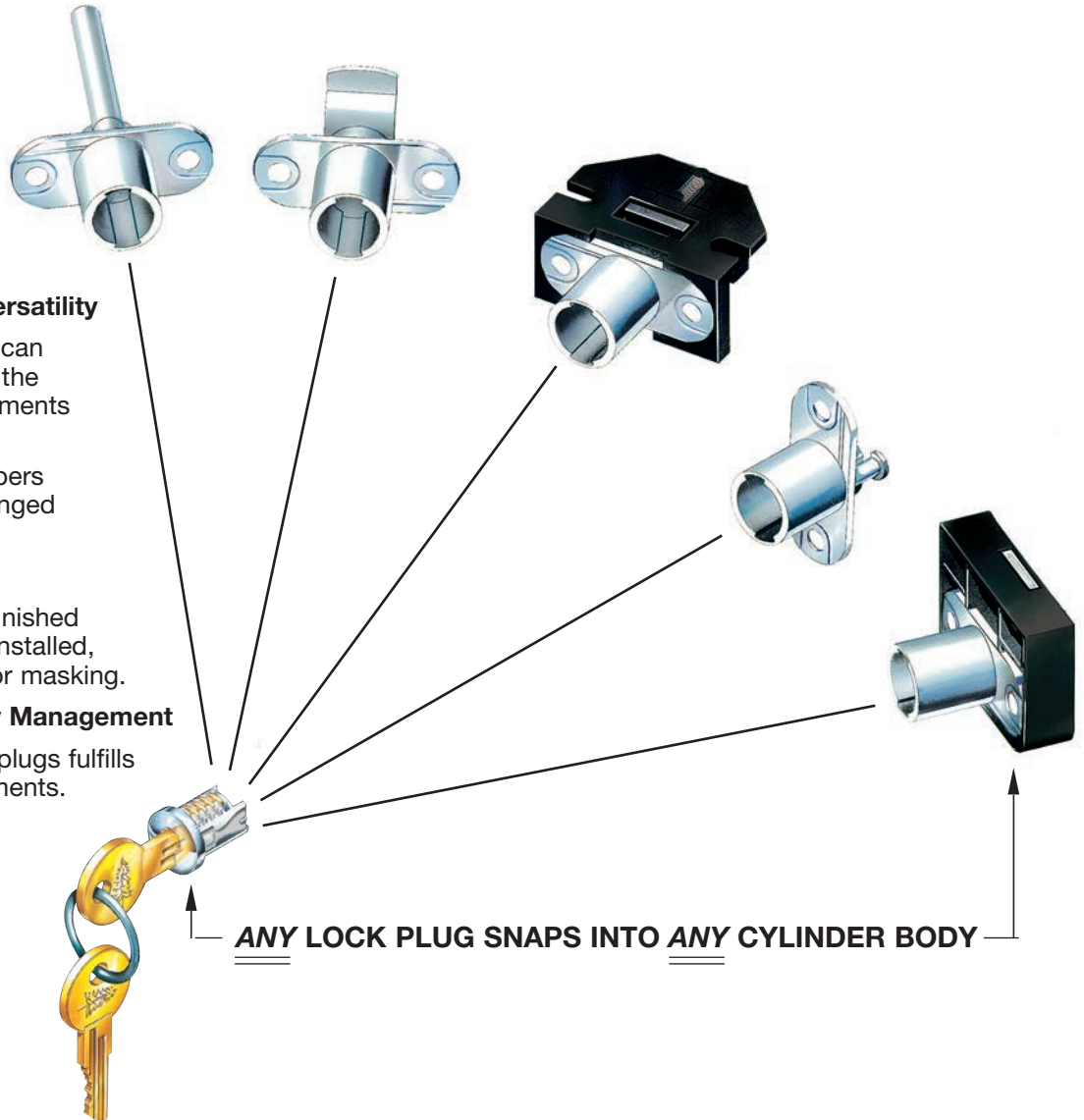
- In Plant...furniture can be keyed easily to the customer's requirements at any time.
- In Field...key numbers can be readily changed by your customer.

Ease of Finishing

- Furniture may be finished without lock plug installed, eliminating need for masking.

Simplified Inventory Management

- One stock of lock plugs fulfills all locking requirements.

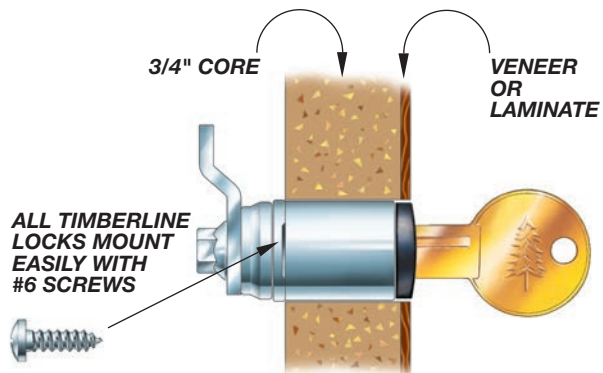


Lock Plug + Cylinder Body = Assembled Lock



A change tool (P/N KY-500) is required to remove plugs. A firm clockwise turn removes the plug.

WHEN ASSEMBLED, MOST TIMBERLINE LOCKS ARE DESIGNED FOR MOUNTING IN 3/4" PANELS ... WITH OR WITHOUT A VENEER OR LAMINATE FACE

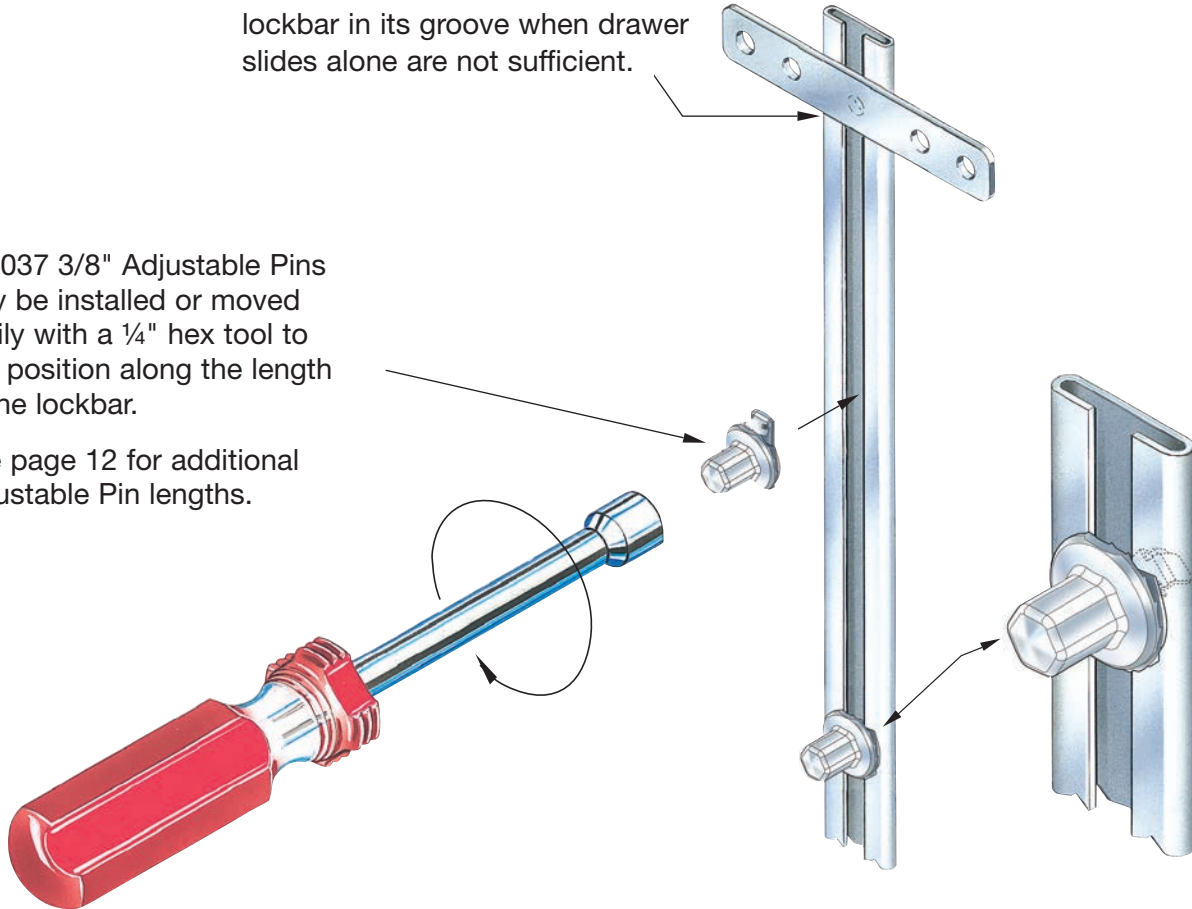


ADJUSTABLE PIN INSTALLATION

LR-100 Lockbar Retainer holds the lockbar in its groove when drawer slides alone are not sufficient.

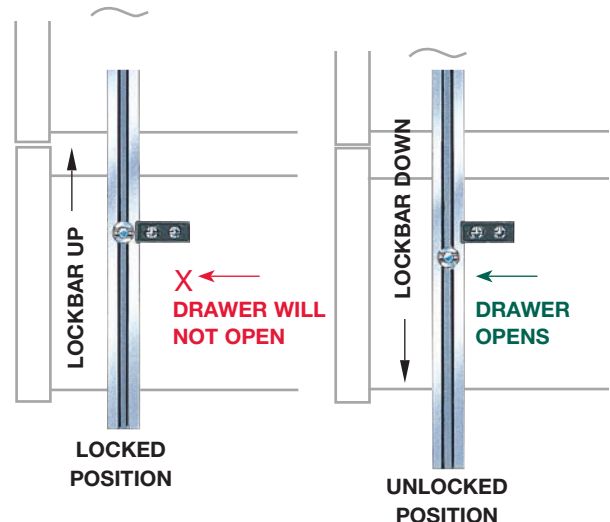
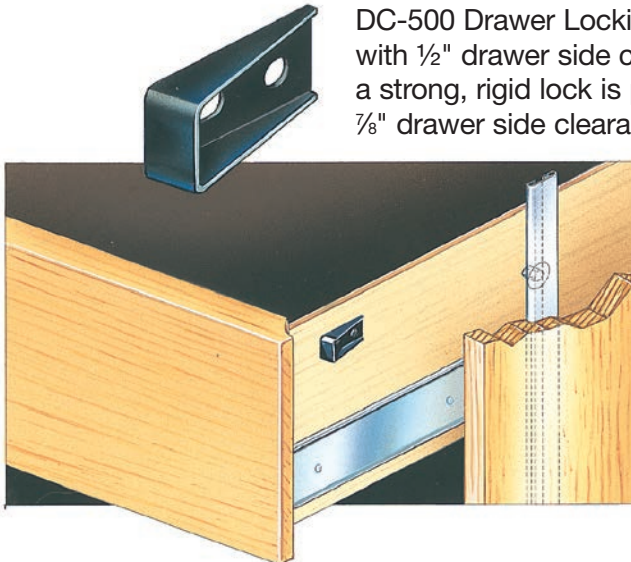
AP-037 3/8" Adjustable Pins may be installed or moved easily with a 1/4" hex tool to any position along the length of the lockbar.

See page 12 for additional Adjustable Pin lengths.



DRAWER LOCKING

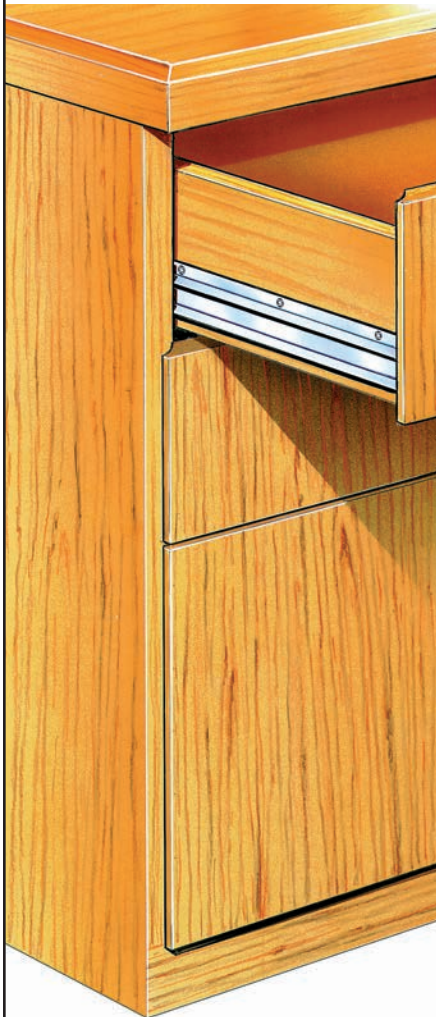
DC-500 Drawer Locking Clips provide the preferred method of locking drawers with 1/2" drawer side clearance. When used with the AP-037 3/8" Adjustable Pin, a strong, rigid lock is provided. See page 13 for Drawer Clips designed for 3/4" or 7/8" drawer side clearance.



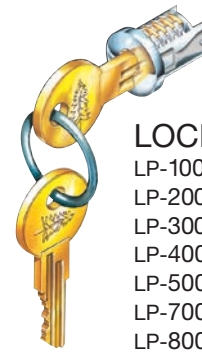
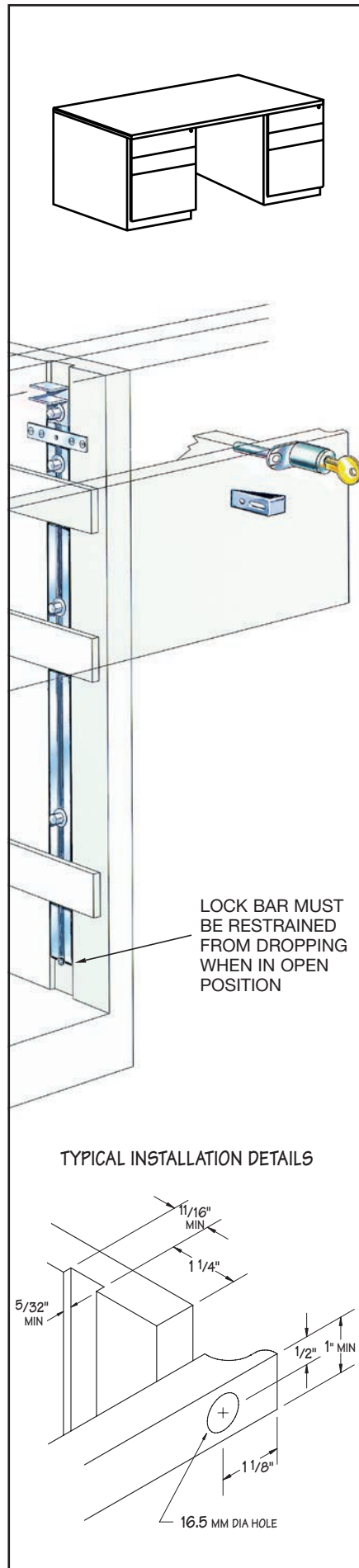
SYSTEM 101

FRONT MOUNTED
GANG LOCK FOR
MULTIPLE DRAWERS

- LOCK MOUNTED IN
DRAWER FRONT
- MINIMIZES INTERFERENCE
WITH HANGING FILES



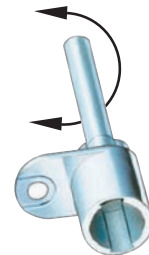
- FULL 1/2" LOCKBAR THROW
- FITS WITHIN 1/2" DRAWER
SLIDE CLEARANCE
- MINIMAL MACHINING
REQUIRED:
 - HOLE FOR LOCK
 - GROOVE FOR LOCKBAR



LOCK PLUGS

LP-100 Nickel
LP-200 Old English
LP-300 Black
LP-400 Statuary Bronze
LP-500 Brass
LP-700 Satin Nickel
LP-800 White

CB-101
TYPE 101
CYLINDER
BODY



LC-106
TYPE 106
LOCKBAR CLIP

LB-240
LOCKBAR
24" STANDARD
OR CUT TO SIZE



AP-037 3/8"
ADJUSTABLE PIN



LR-100
LOCKBAR RETAINER



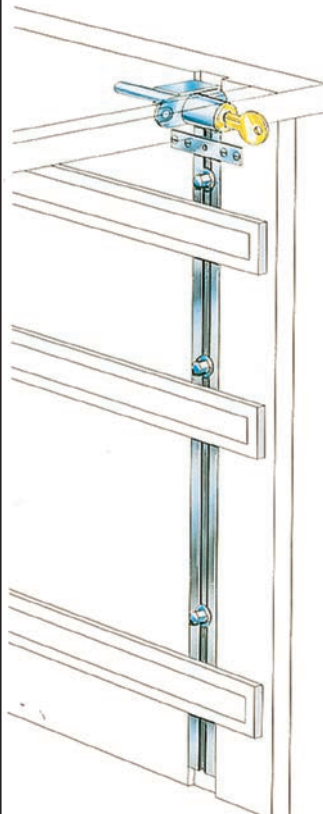
DC-500 DRAWER LOCKING CLIP



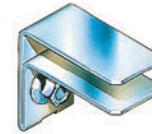
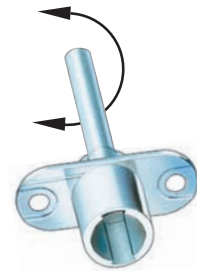
SYSTEM 100



- LOCK MOUNTED
IN FIXED RAIL

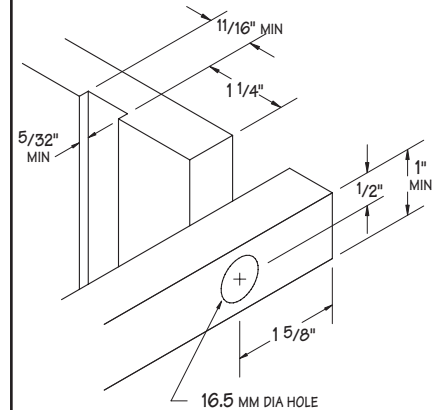


CB-100
TYPE 100
CYLINDER
BODY

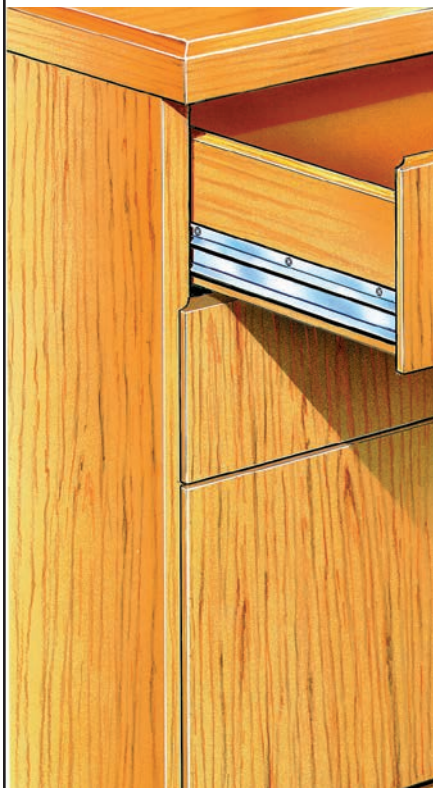


LC-100
TYPE 100
LOCKBAR CLIP

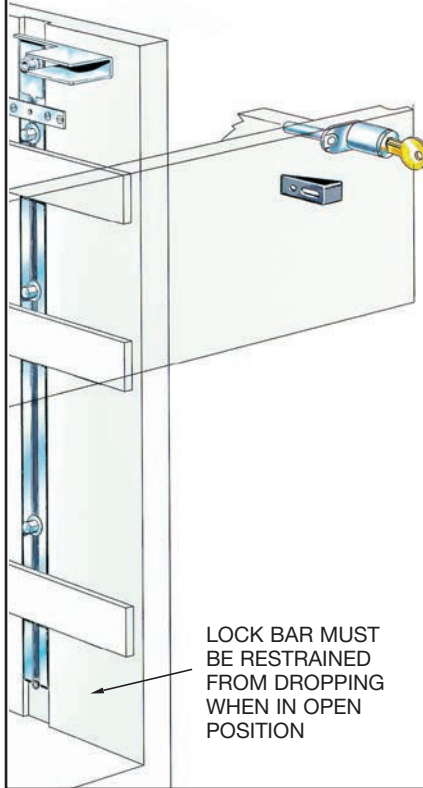
TYPICAL INSTALLATION DETAILS



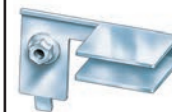
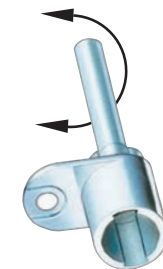
SYSTEM 104



- LOCKBAR LOCATED
FURTHER BACK IN CASE
- FOR USE WITH 32MM
CABINET CONSTRUCTION

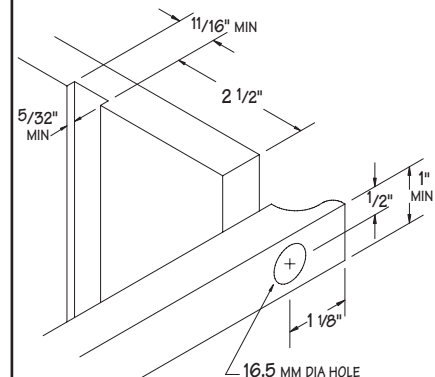


CB-101
TYPE 101
CYLINDER
BODY



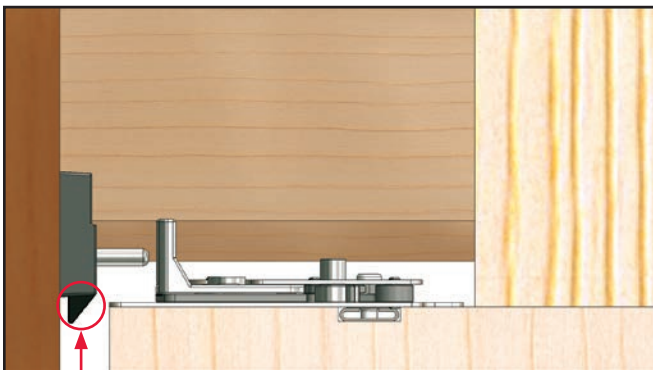
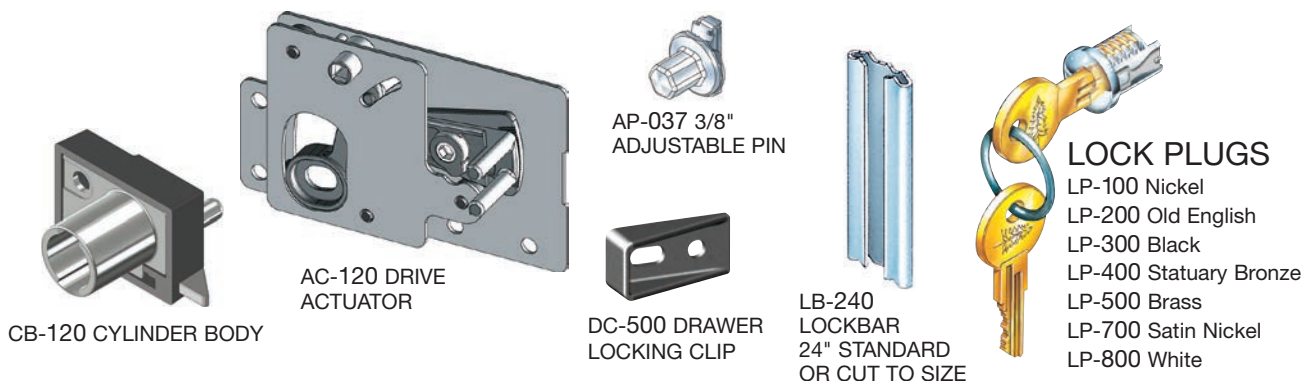
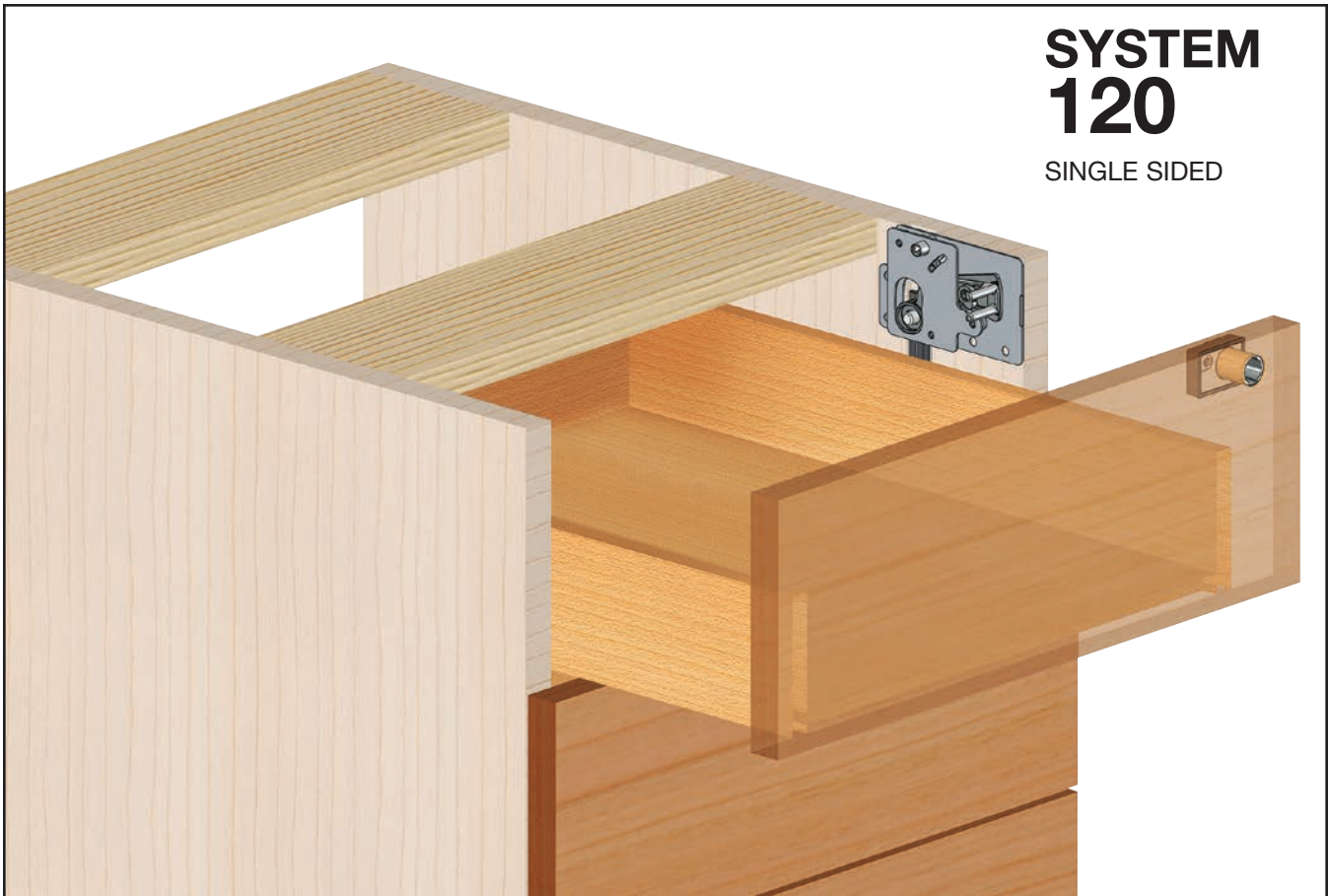
EXTENDED
LOCKBAR CLIP
LC-104 (RIGHT HAND)
LC-114 (LEFT HAND)

TYPICAL INSTALLATION DETAILS

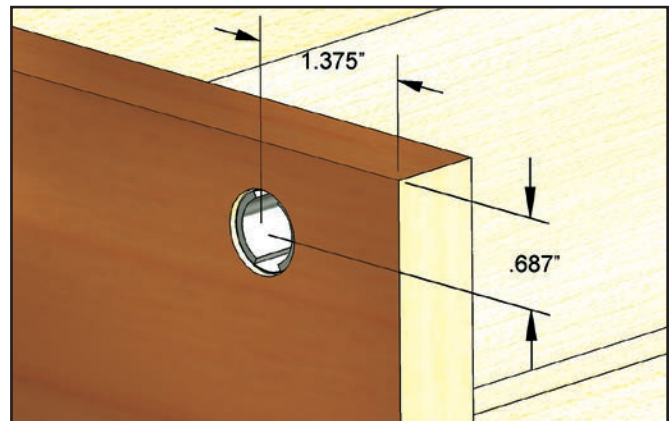


SYSTEM 120

SINGLE SIDED



Assure-Sync feature keeps the lock and actuator position synchronized. Low profile pin cam keeps lock from interfering with the drawer box.

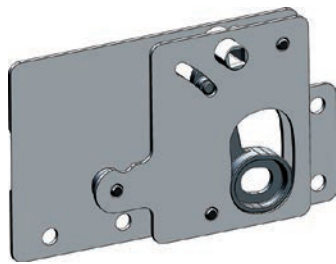
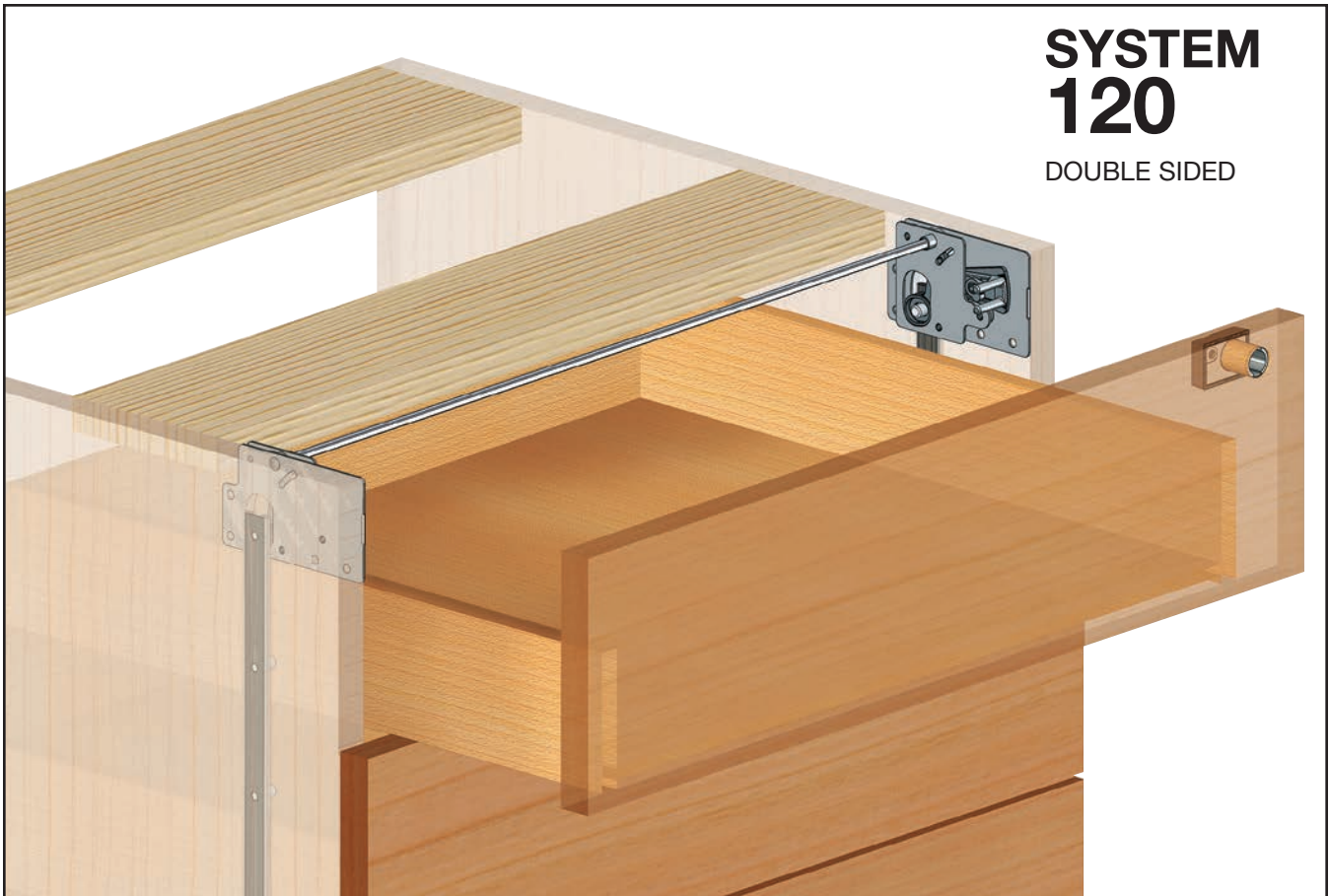


Reference dimensions for lock hole with full overlay drawer and 3/4\" end panel.

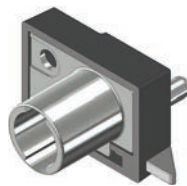


SYSTEM 120

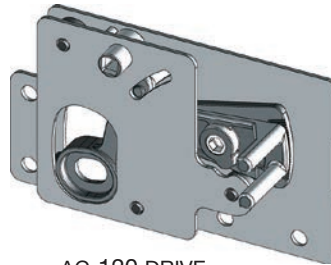
DOUBLE SIDED



AC-125 REMOTE
ACTUATOR



CB-120
CYLINDER BODY



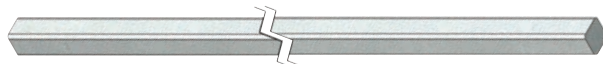
AC-120 DRIVE
ACTUATOR



DC-500 DRAWER
LOCKING CLIP



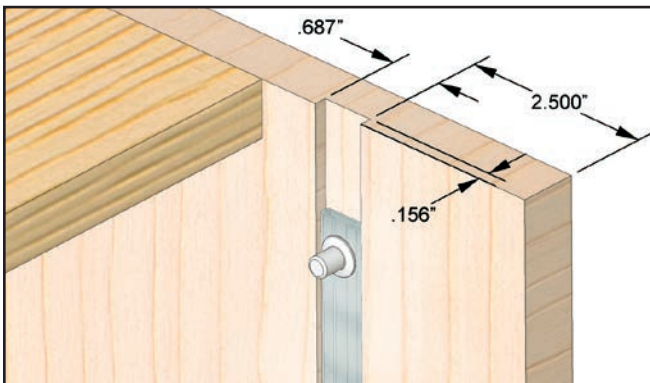
LB-240
LOCKBAR
24" STANDARD
OR CUT TO SIZE



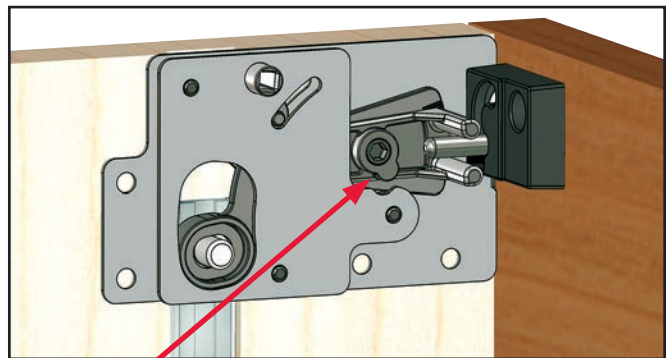
SS-360-36"
SQUARE SHAFT



AP-037 3/8"
ADJUSTABLE PIN



Reference dimensions for end panel with full overlay drawer. Lockbar location is the same for the AC-120 & AC-125 actuators.

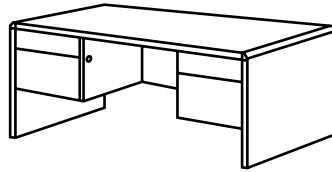


Lock arm adjusts vertically $\pm 3/16"$ for ease of alignment. Lock arm adjusts with $5/32"$ hex wrench. Low profile actuator fits within $1/2"$ drawer suspension.



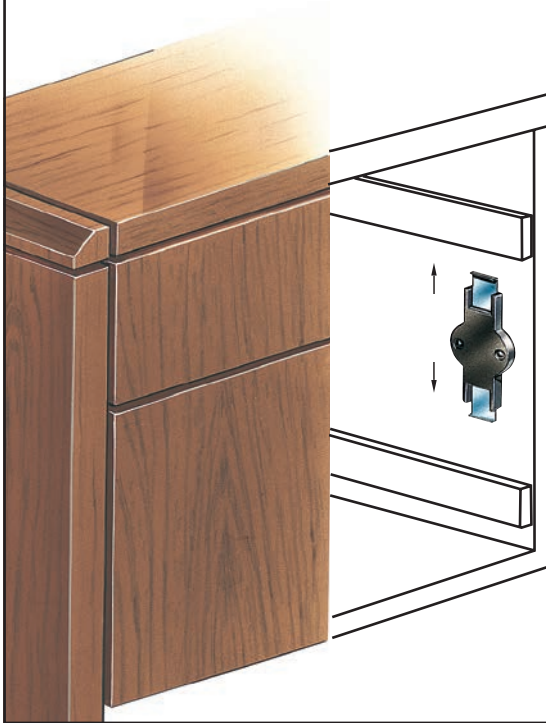
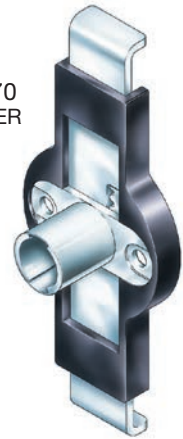
SYSTEM 270

SIDE MOUNTED GANG LOCK
FOR TWO DRAWERS

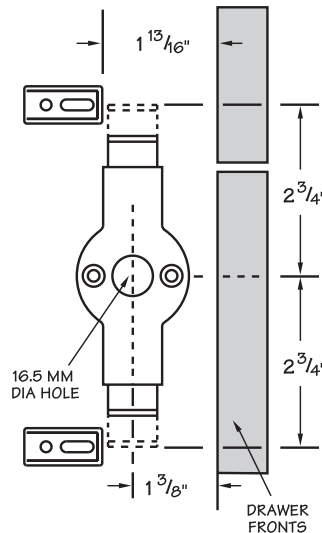


DC-500
DRAWER
LOCKING
CLIP

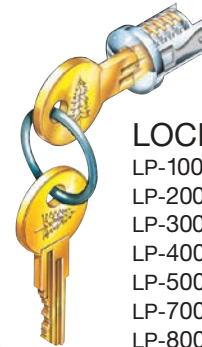
CB-270
TYPE 270
CYLINDER
BODY



TYPICAL INSTALLATION DETAILS



- FULL 1/2" THROW
- FITS WITHIN 1/2" DRAWER SLIDE CLEARANCE
- LOCK HOLE ONLY MACHINING REQUIRED

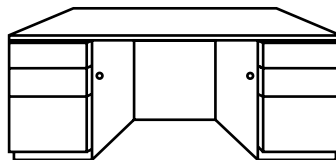


LOCK PLUGS

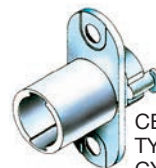
- LP-100 Nickel
- LP-200 Old English
- LP-300 Black
- LP-400 Statuary Bronze
- LP-500 Brass
- LP-700 Satin Nickel
- LP-800 White

SYSTEM 150

SIDE MOUNTED GANG LOCK
FOR MULTIPLE DRAWERS

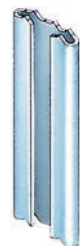


DC-500
DRAWER
LOCKING
CLIP



CB-150
TYPE 150
CYLINDER
BODY

LB-240
LOCKBAR
24" STANDARD
OR CUT TO
SIZE



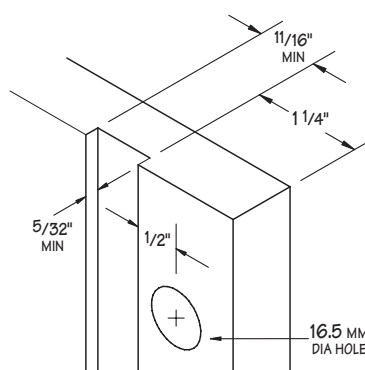
LC-150
TYPE 150
LOCKBAR CLIP

AP-037 3/8"
ADJUSTABLE
PIN



LR-100
LOCKBAR
RETAINER

TYPICAL INSTALLATION DETAILS



- FULL 1/2" LOCKBAR THROW
- FITS WITHIN 1/2" DRAWER SLIDE CLEARANCE
- MINIMAL MACHINING REQUIRED:
 - HOLE FOR LOCK
 - GROOVE FOR LOCKBAR



CENTRAL LOCKING SYSTEM 500



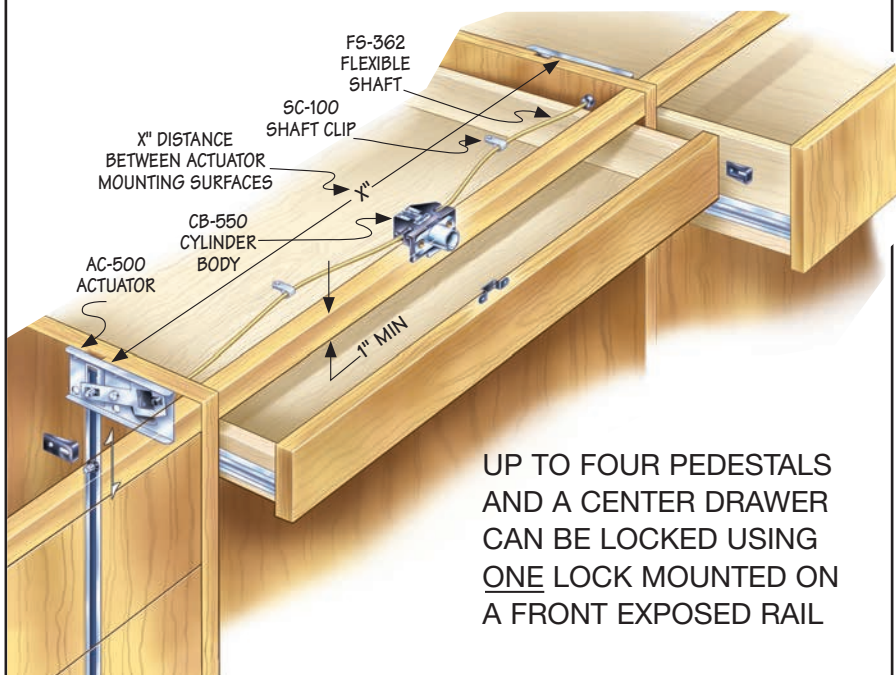
**A COMPLETE
SYSTEM FOR
CENTRAL
LOCKING BOTH
DESKS AND
CREDENZAS.**

**Components are
available for single
sided units and
credenzas with
double doors.**

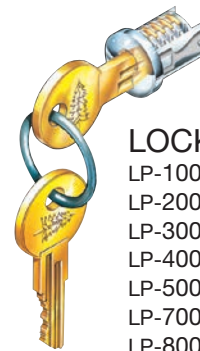


Special cylinder bodies
and flexible shafts available
for single sided desks and
double door credenzas.

TYPICAL INSTALLATION

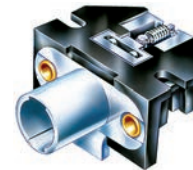


**UP TO FOUR PEDESTALS
AND A CENTER DRAWER
CAN BE LOCKED USING
ONE LOCK MOUNTED ON
A FRONT EXPOSED RAIL**

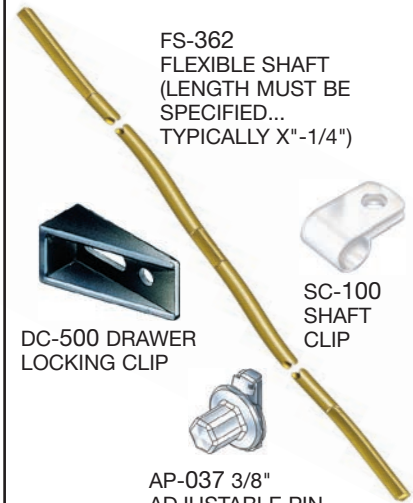


LOCK PLUGS

LP-100 Nickel
LP-200 Old English
LP-300 Black
LP-400 Statuary Bronze
LP-500 Brass
LP-700 Satin Nickel
LP-800 White



CB-550
CYLINDER BODY



FS-362
FLEXIBLE SHAFT
(LENGTH MUST BE
SPECIFIED...
TYPICALLY X"-1/4")



DC-500 DRAWER
LOCKING CLIP



SC-100
SHAFT
CLIP



AP-037 3/8"
ADJUSTABLE PIN



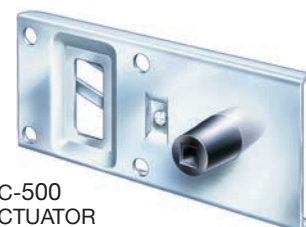
LB-240
LOCKBAR
24" STANDARD
OR CUT TO SIZE



SP-250
STRIKE
PLATE



LR-100
LOCKBAR RETAINER



AC-500
ACTUATOR

ADJUSTABLE PINS

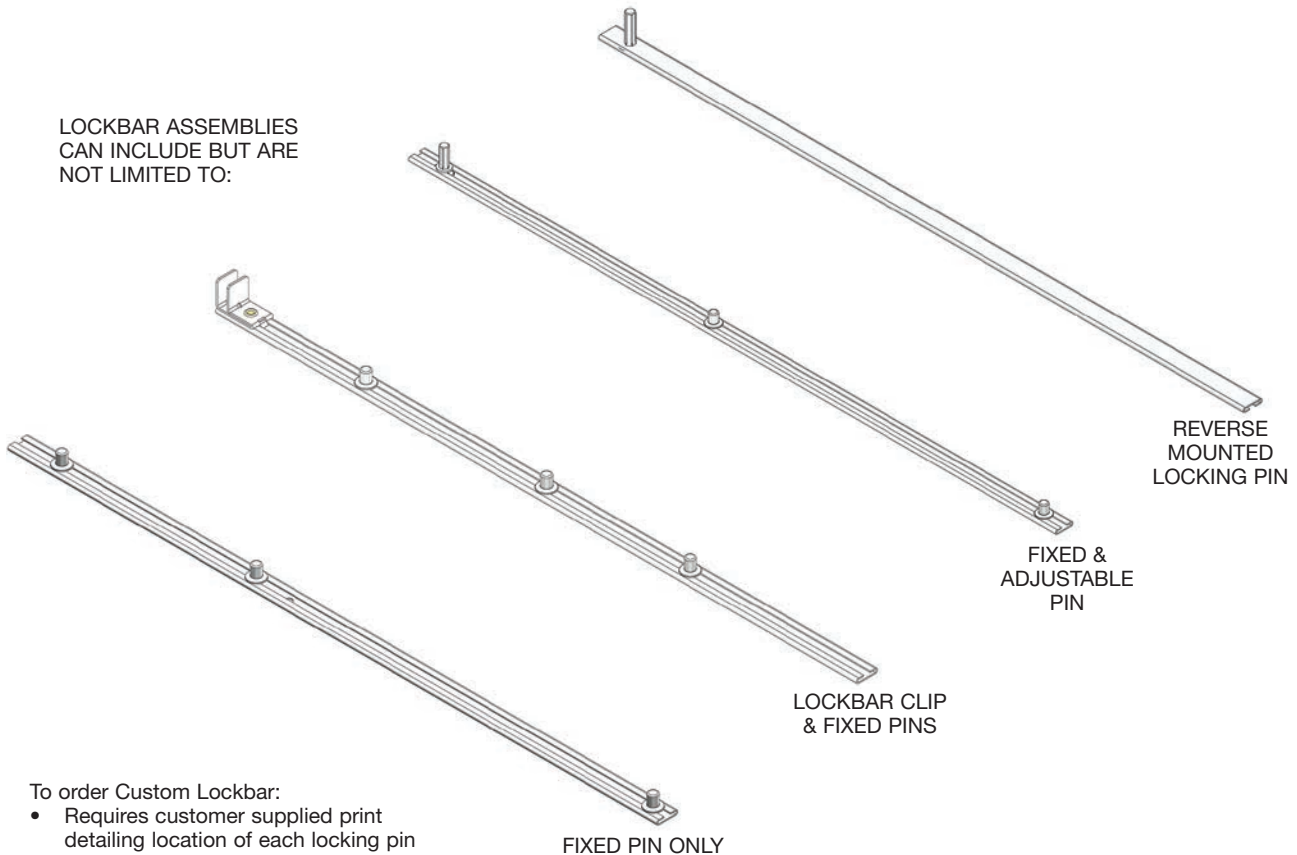


ALL ADJUSTABLE PINS INSTALL WITH 1/4" HEX TOOL

CUSTOM LOCKBARS

- Manufactured using any CompX Timberline Lockbar Clip, Adjustable Pin or Fixed Pin
- Reduces labor and scrap costs
- Assures Lockbar Clips and locking pins are properly installed
- Custom Lockbar can be manufactured in lengths 11.000" – 60.000"

LOCKBAR ASSEMBLIES
CAN INCLUDE BUT ARE
NOT LIMITED TO:

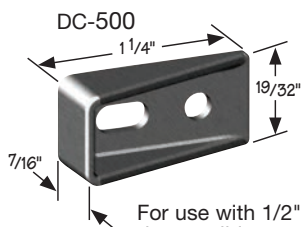


To order Custom Lockbar:

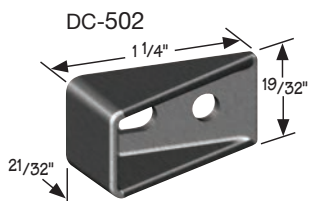
- Requires customer supplied print detailing location of each locking pin or lockbar clip
- 50 piece minimum order quantity



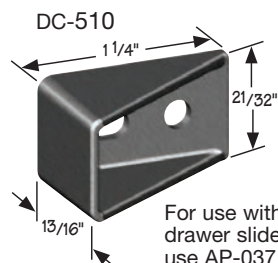
DRAWER CLIPS



For use with 1/2" drawer slides, use AP-037 Adjustable Pin



For use with 3/4" drawer slides, use AP-037 Adjustable Pin

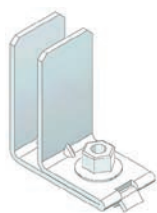


For use with 7/8" drawer slides, use AP-037 Adjustable Pin

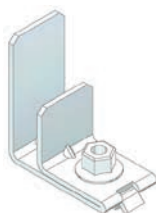
LOCKBAR CLIPS

For more information and installation specifications for Lockbar Clips, visit <http://compX.com/instructions.html> and view the CompX Timberline Application Drawings B-100 – C-115

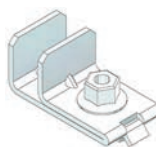
FRONT MOUNT – STANDARD CASE CONSTRUCTION:



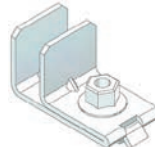
LC-100
1-1/4" LEG LENGTH



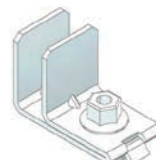
LC-105
1-1/4" & 7/8" LEG LENGTH



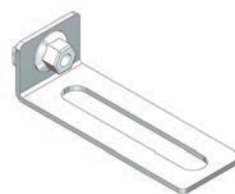
LC-106
1/2" LEG LENGTH



LC-107
5/8" LEG LENGTH



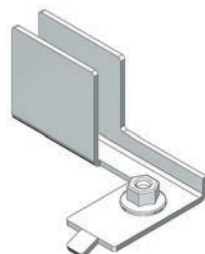
LC-109
3/4" LEG LENGTH



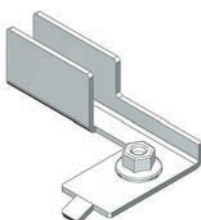
LC-102
REVERSE MOUNT CLIP

FRONT MOUNT – 32MM CASE CONSTRUCTION:

LEFT HAND MOUNT:

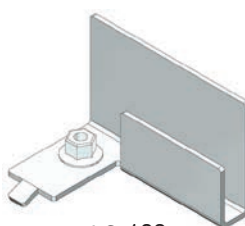


LC-114
1" LEG LENGTH

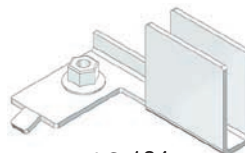


LC-214
5/8" LEG LENGTH

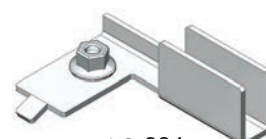
RIGHT HAND MOUNT:



LC-103
1-1/4" & 11/16" LEG LENGTH

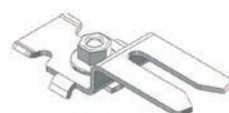


LC-104
1" LEG LENGTH



LC-204
5/8" LEG LENGTH

SIDE MOUNT:



LC-150
FOR 3/4" PANELS



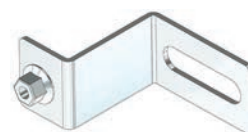
LC-151
FOR 1" PANELS



LC-152
FOR 1-1/8" – 2-1/8" PANELS
MUST BE USED WITH CB-110



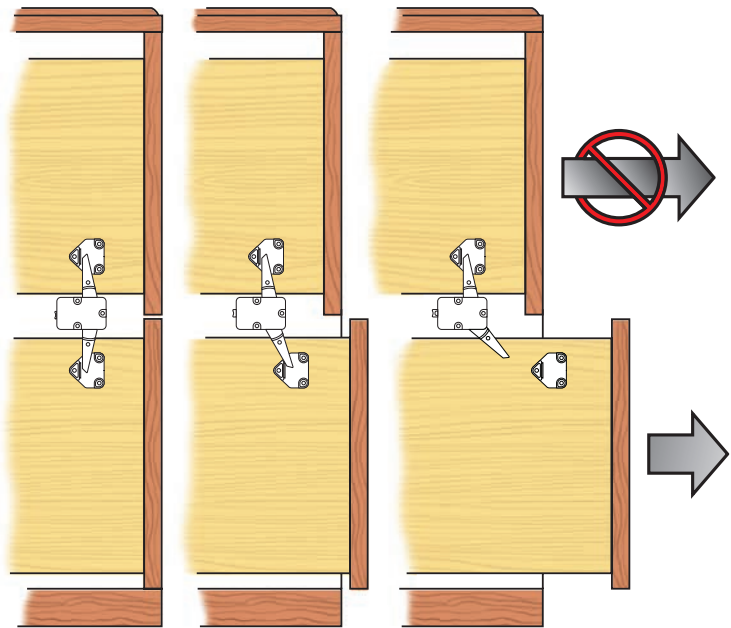
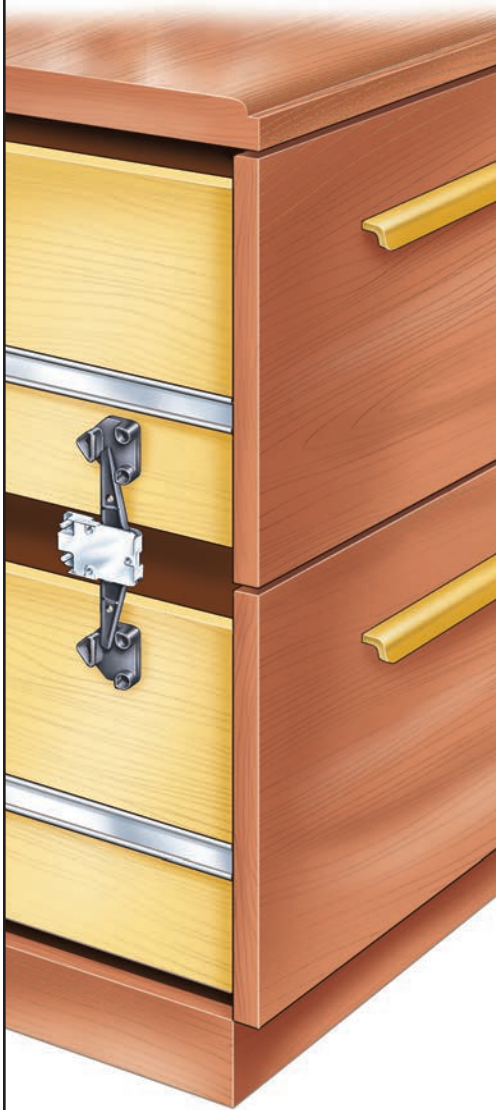
CB-110
CYINDER BODY



LC-101
FOR 2-1/8" – 3-1/4" PANELS
MUST BE USED WITH CB-110

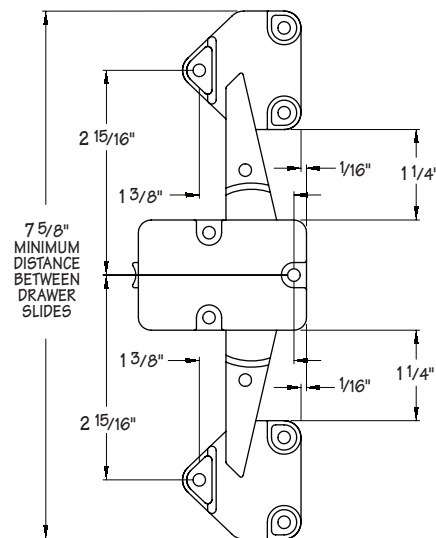
ANTI-TIP INTERLOCK SYSTEM 400

2-DRAWER LATERAL (NO LOCK)

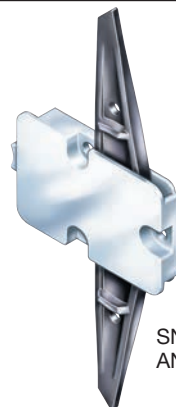


WHEN EITHER DRAWER IS PULLED OPEN, THE DRAWER CLIP ON THAT DRAWER MOVES THE SNAPPER INTO A LOCKED POSITION... THEREBY PREVENTING ANY FURTHER DRAWERS FROM BEING OPENED

TYPICAL INSTALLATION DETAILS



- PREVENTS MORE THAN ONE DRAWER FROM BEING OPENED AT A TIME
- MEETS BIFMA STANDARDS FOR STRENGTH AND DURABILITY
- ALL COMPONENTS ARE SURFACE MOUNTED
- WIDE TOLERANCE ACCOMMODATION
- EASY TO MOUNT AND LOW COST
- 1/2" DRAWER SLIDE CLEARANCE REQUIRED



SN-400
ANTI-TIP SNAPPER

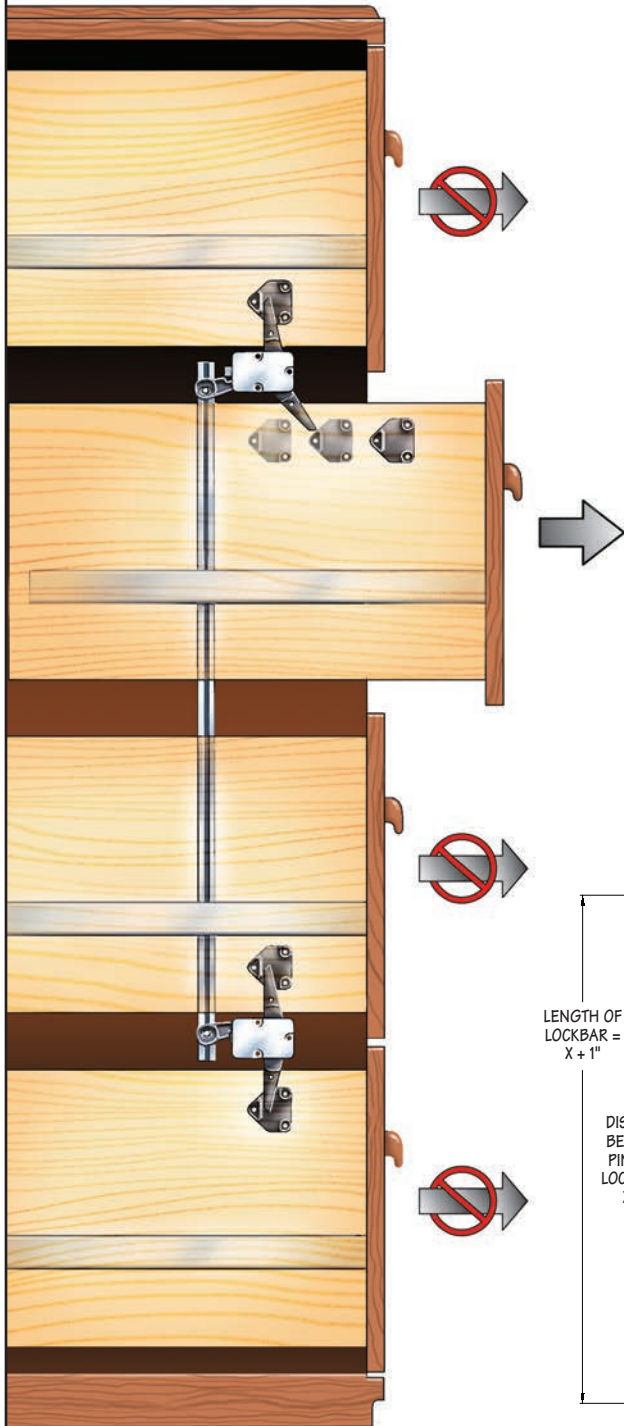


DC-400
DRAWER CLIP



ANTI-TIP INTERLOCK SYSTEM 400

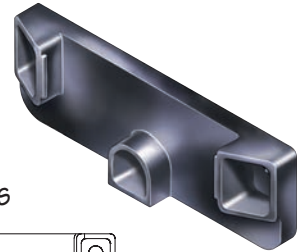
3 OR 4-DRAWER LATERAL (NO LOCK)



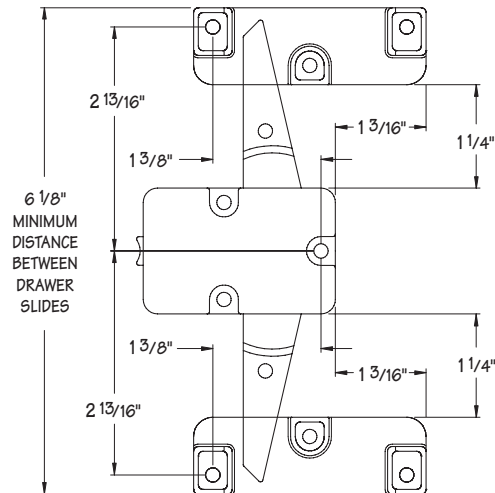
DC-410 NARROW DRAWER CLIP

FOR USE WHEN LESS SPACE IS ALLOWABLE
BETWEEN DRAWER SLIDES

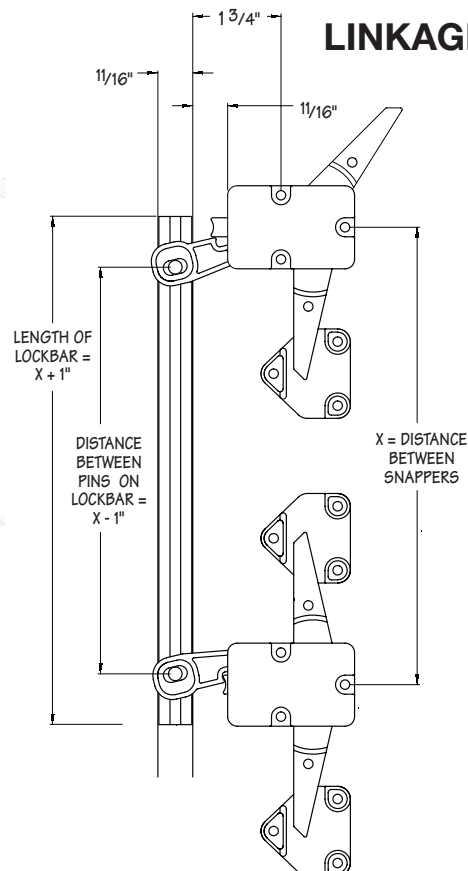
DC-410
NARROW
DRAWER CLIP



TYPICAL INSTALLATION DETAILS



LINKAGE COMPONENTS



SN-410
LINKAGE ARM

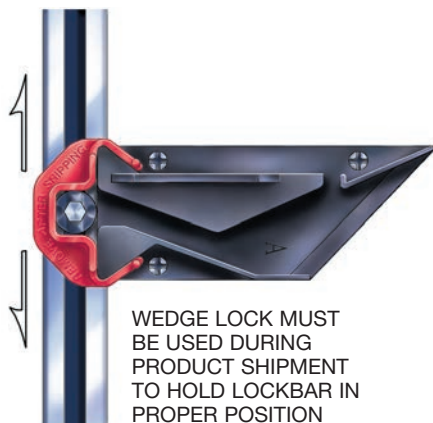


LOCKBAR
FIXED PIN
(SEE DRAWING
FOR SIZING
INSTRUCTIONS)

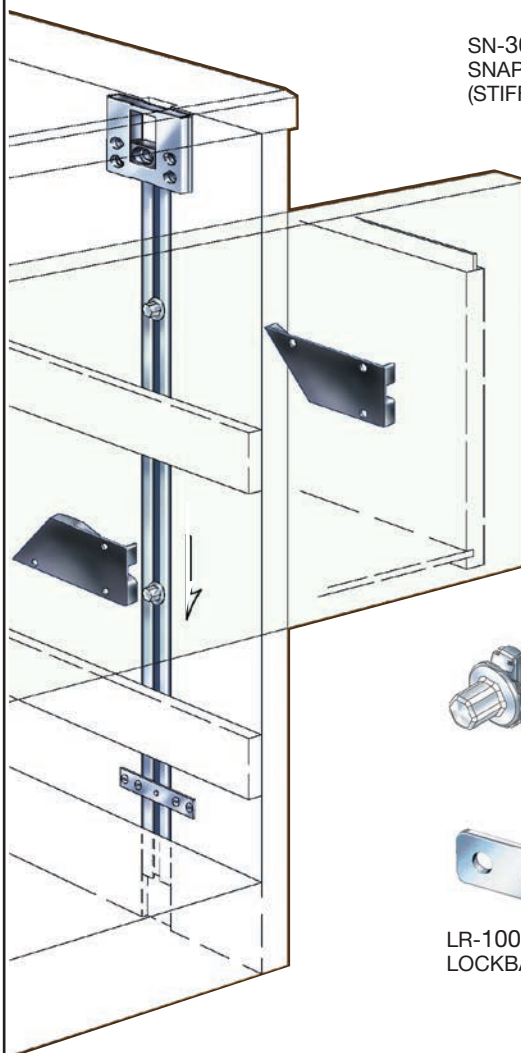


ANTI-TIP INTERLOCK SYSTEM 350

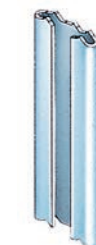
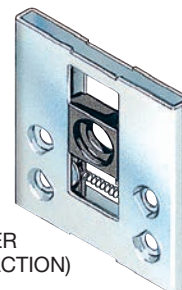
(NO LOCK)



WEDGE LOCK MUST
BE USED DURING
PRODUCT SHIPMENT
TO HOLD LOCKBAR IN
PROPER POSITION



SN-300
SNAPPER
(STIFF ACTION)



LB-240
LOCKBAR
24" STANDARD
OR CUT TO SIZE



AP-037 3/8"
ADJUSTABLE PIN



LR-100
LOCKBAR RETAINER

WD-21A
ANTI-TIP
WEDGE TYPE A



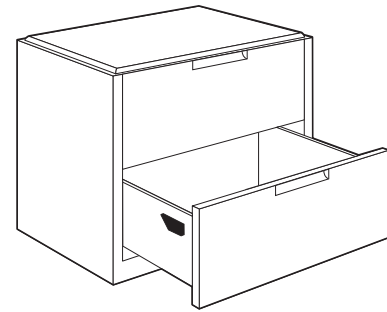
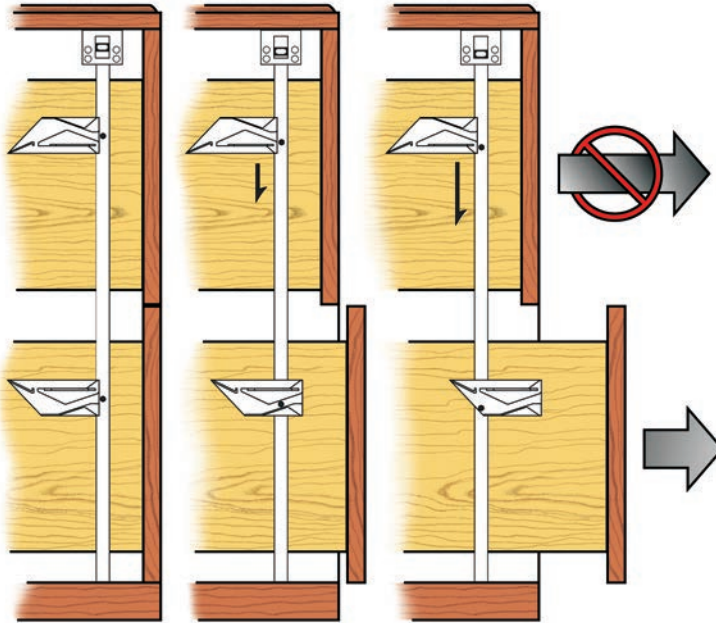
WD-100
WEDGE LOCK



WD-21B
ANTI-TIP
WEDGE TYPE B

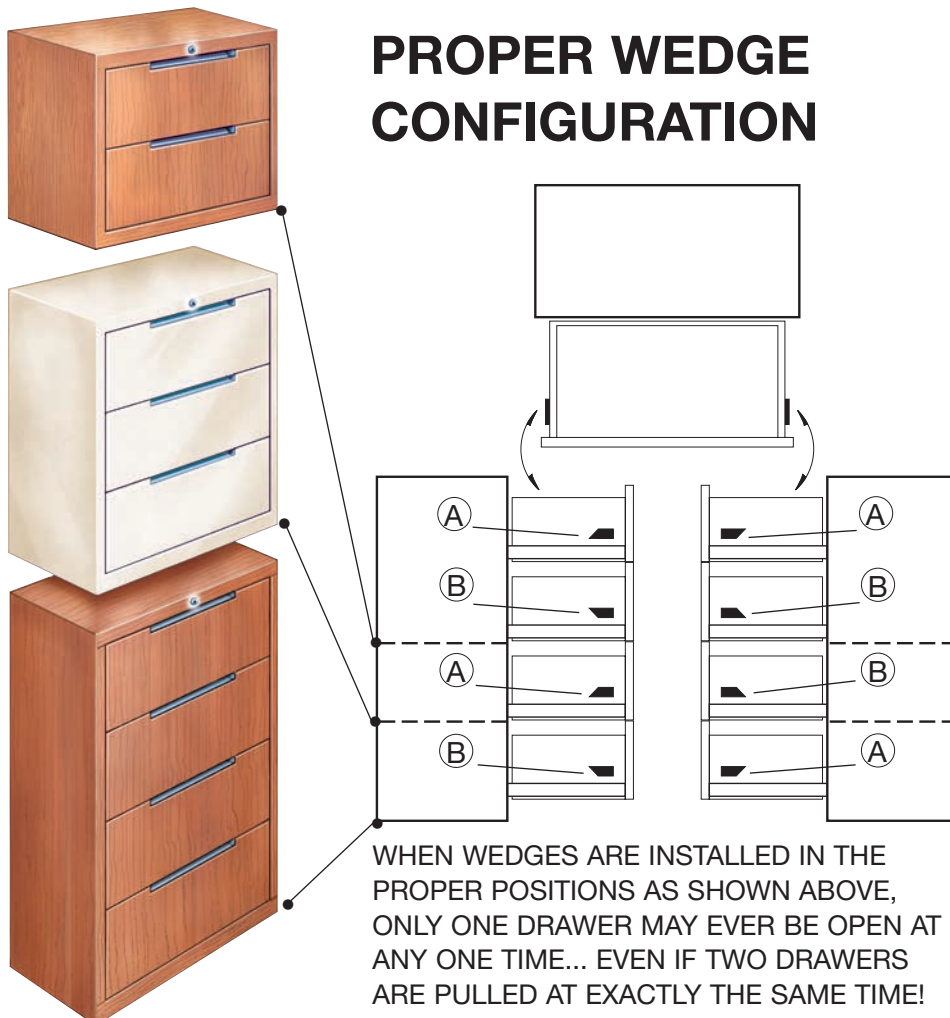


ANTI-TIP INTERLOCK FUNCTION



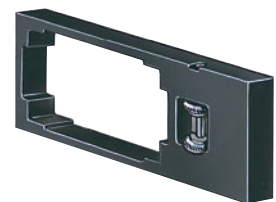
WHEN ANY DRAWER IS PULLED OPEN, THE WEDGES ON THAT DRAWER MOVE THE LOCKBAR INTO A LOCKED POSITION... THEREBY PREVENTING ANY FURTHER DRAWERS FROM BEING OPENED

PROPER WEDGE CONFIGURATION

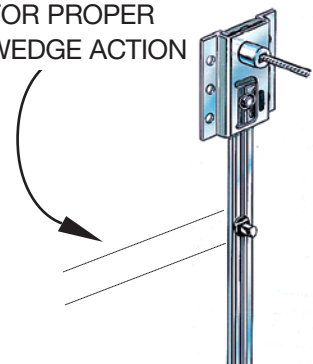


TL-200 WEDGE/PIN MARKING TOOL

REQUIRED
FOR PROPER
INSTALLATION

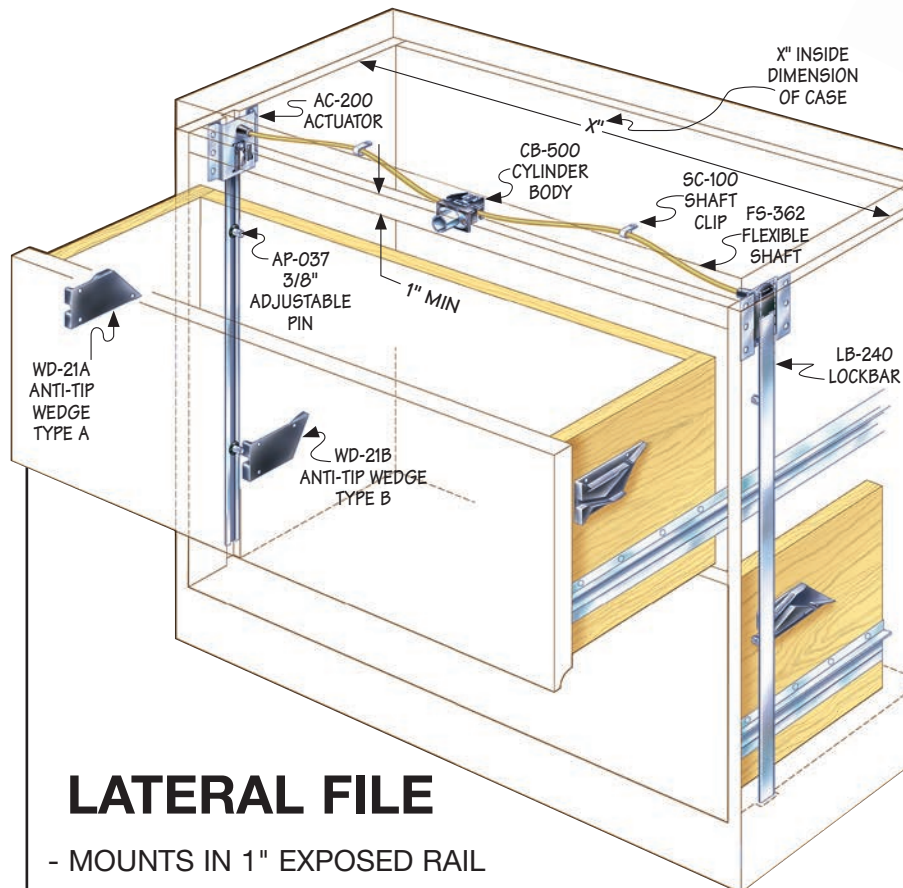


ACCURATELY
MARKS PIN
POSITION
FOR PROPER
WEDGE ACTION



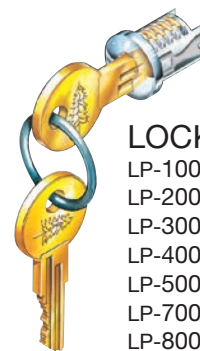
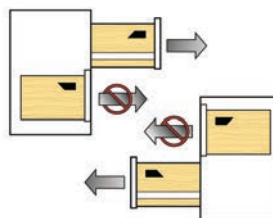
LATERAL FILE LOCK/INTERLOCK SYSTEM 300

LOCKS WIDE
DRAWERS ON
BOTH SIDES AND
PROVIDES ANTI-
TIP INTERLOCK



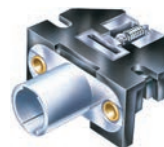
LATERAL FILE

- MOUNTS IN 1" EXPOSED RAIL
- ANTI-TIP INTERLOCK HELPS PREVENT ACCIDENTAL TIPPING OF FILE UNIT
- SEE PROPER WEDGE CONFIGURATION ON PAGE 14

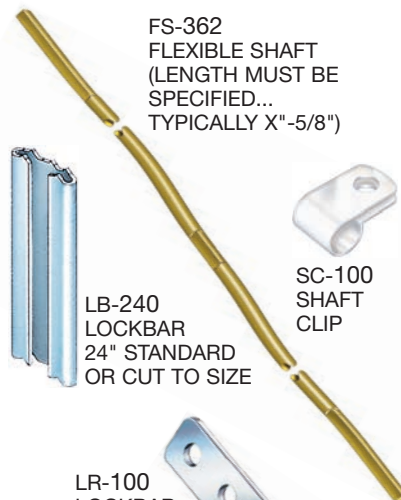


LOCK PLUGS

LP-100 Nickel
LP-200 Old English
LP-300 Black
LP-400 Statuary Bronze
LP-500 Brass
LP-700 Satin Nickel
LP-800 White



CB-500
CYLINDER BODY



FS-362
FLEXIBLE SHAFT
(LENGTH MUST BE
SPECIFIED...
TYPICALLY X"-5/8")



LB-240
LOCKBAR
24" STANDARD
OR CUT TO SIZE



SC-100
SHAFT
CLIP

LR-100
LOCKBAR
RETAINER

WD-21A
ANTI-TIP
WEDGE TYPE A



AP-037 3/8"
ADJUSTABLE PIN



WD-21B
ANTI-TIP
WEDGE TYPE B

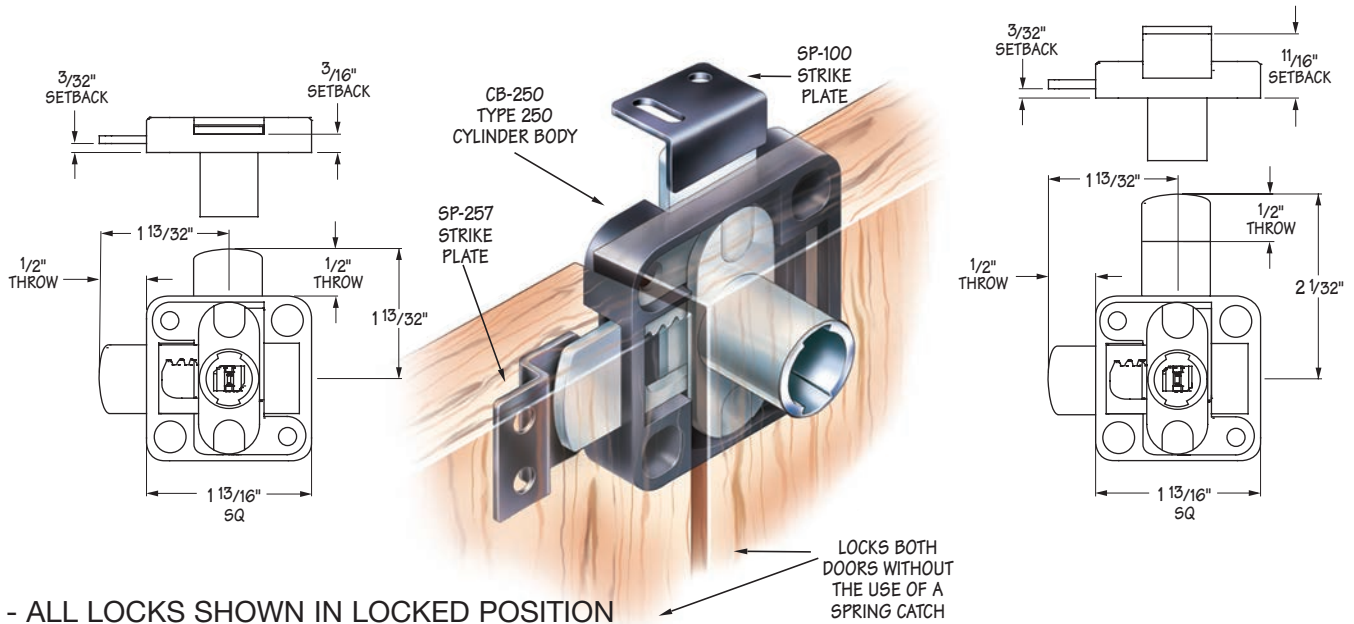


AC-200
ACTUATOR

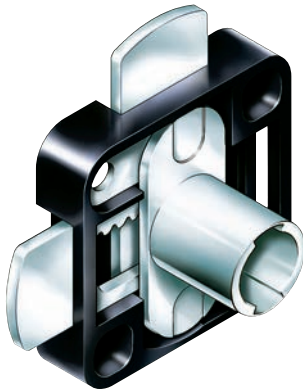


DOUBLE DOOR LOCK TYPE 250

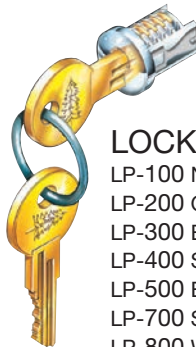
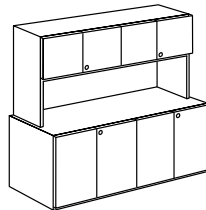
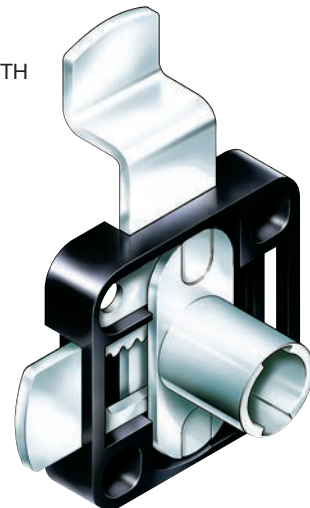
- REQUIRES 16.5 MM DIAMETER HOLE



CB-250
TYPE 250
DOUBLE DOOR LOCK



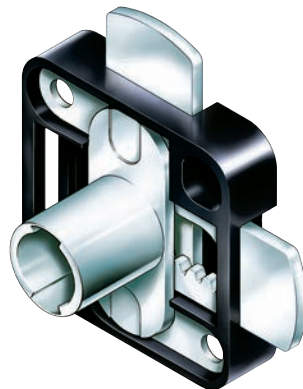
CB-251
TYPE 251
DOUBLE DOOR LOCK WITH
 $\frac{11}{16}$ " OFFSET



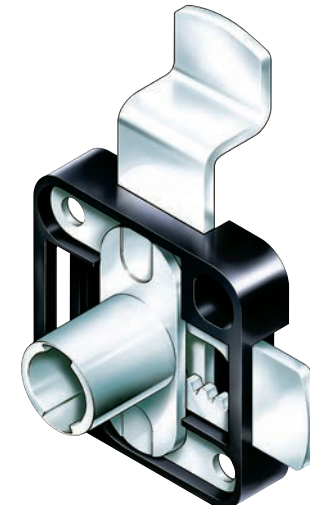
LOCK PLUGS

LP-100 Nickel
LP-200 Old English
LP-300 Black
LP-400 Statuary Bronze
LP-500 Brass
LP-700 Satin Nickel
LP-800 White

CB-255
TYPE 255
OPPOSITE MOUNT
DOUBLE DOOR LOCK



CB-256
TYPE 256
OPPOSITE MOUNT
DOUBLE DOOR LOCK
WITH $\frac{11}{16}$ " OFFSET

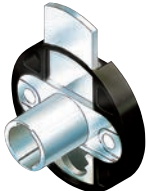
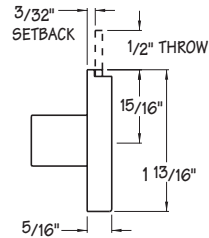


DEADBOLT LOCKS HORIZONTAL MOUNT

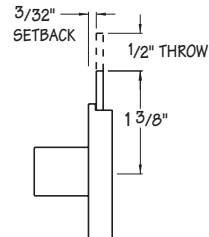
- TWO STYLES AVAILABLE
- REQUIRES 16.5 MM DIAMETER HOLE
- ATTRACTIVE TOUGH NYLON HOUSING
- MOUNTS IN 3/4" MATERIAL



CB-230
TYPE 230
CYLINDER BODY

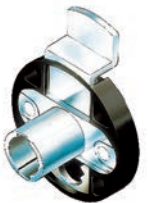
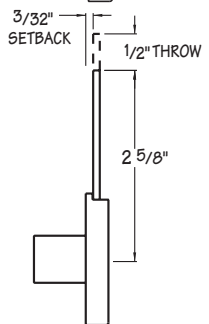


CB-231
TYPE 231
CYLINDER BODY

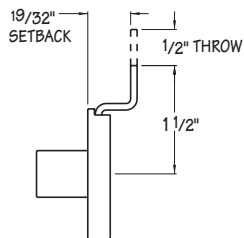


SP-250
STRIKE
PLATE

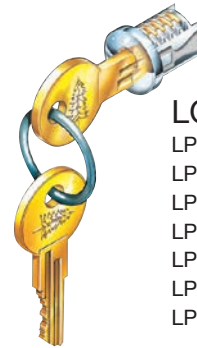
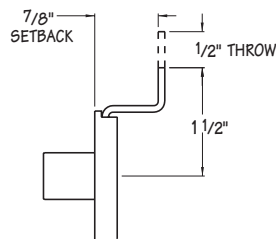
CB-232
TYPE 232
CYLINDER BODY



CB-234
TYPE 234
CYLINDER BODY

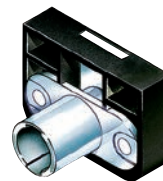


CB-235
TYPE 235
CYLINDER BODY

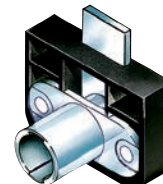
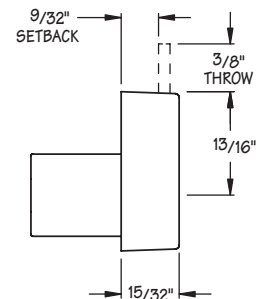


LOCK PLUGS

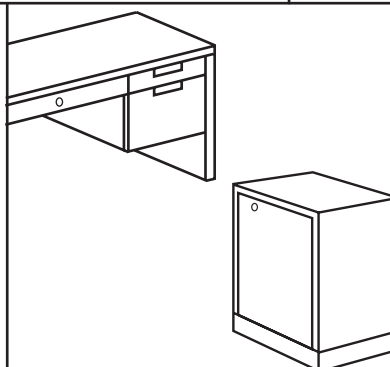
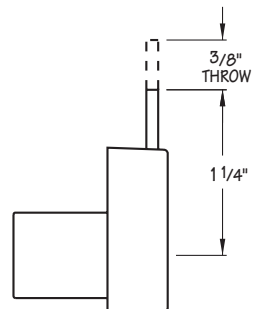
- LP-100 Nickel
- LP-200 Old English
- LP-300 Black
- LP-400 Statuary Bronze
- LP-500 Brass
- LP-700 Satin Nickel
- LP-800 White



CB-280
TYPE 280
CYLINDER BODY

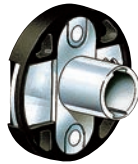
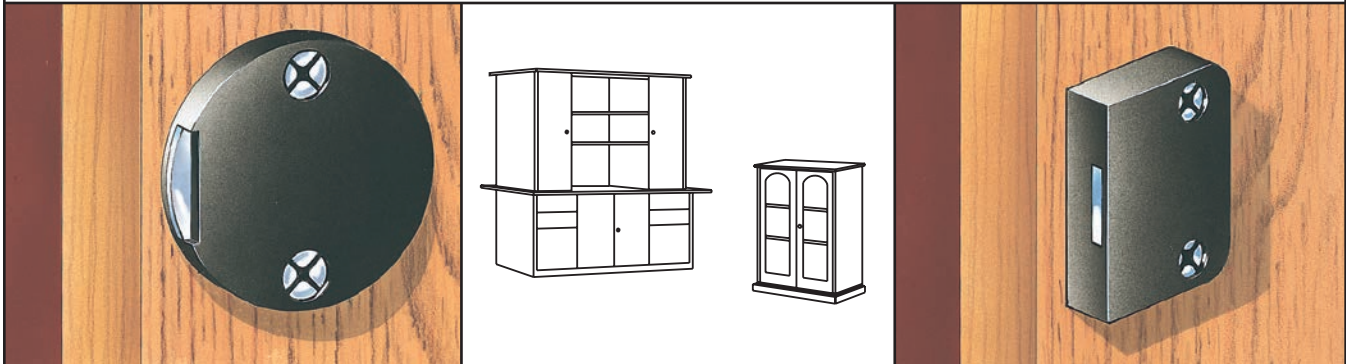


CB-281
TYPE 281
CYLINDER BODY

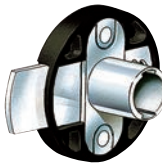
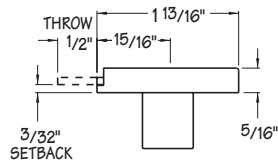


DEADBOLT LOCKS VERTICAL MOUNT

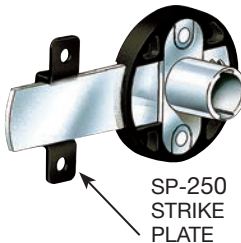
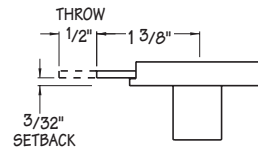
- TWO STYLES AVAILABLE
- REQUIRES 16.5 MM DIAMETER HOLE
- ATTRACTIVE TOUGH NYLON HOUSING
- MOUNTS IN 3/4" MATERIAL



CB-240
TYPE 240
CYLINDER BODY

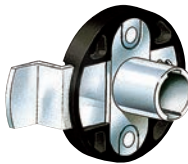
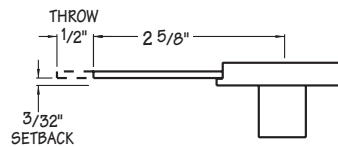


CB-241
TYPE 241
CYLINDER BODY

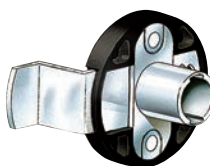
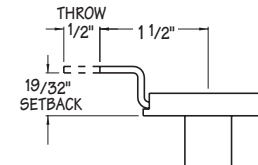


CB-242
TYPE 242
CYLINDER BODY

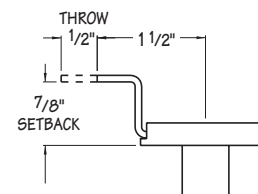
SP-250
STRIKE
PLATE



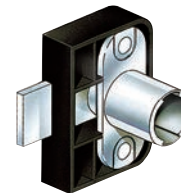
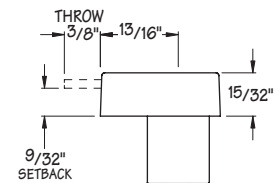
CB-244
TYPE 244
CYLINDER BODY



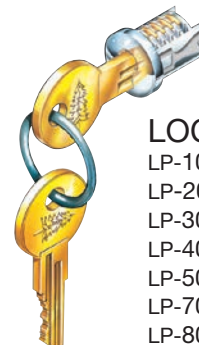
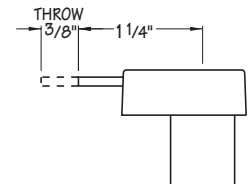
CB-245
TYPE 245
CYLINDER BODY



CB-290
TYPE 290
CYLINDER BODY



CB-291
TYPE 291
CYLINDER BODY

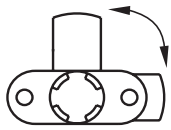


LOCK PLUGS

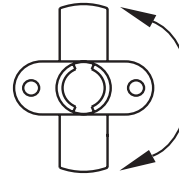
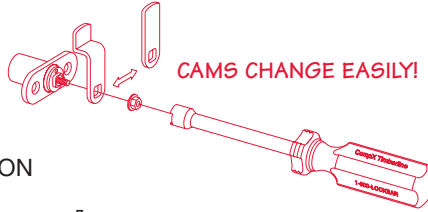
- LP-100 Nickel
- LP-200 Old English
- LP-300 Black
- LP-400 Statuary Bronze
- LP-500 Brass
- LP-700 Satin Nickel
- LP-800 White

CAM LOCKS HORIZONTAL MOUNT

- AVAILABLE WITH EITHER 90° OR 180° ROTATION
- REQUIRES 16.5 MM DIAMETER HOLE
- MOUNTS IN 3/4" MATERIAL

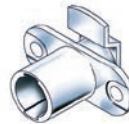
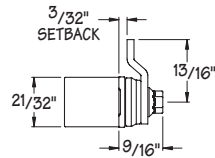
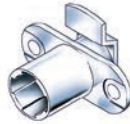


90° ROTATION



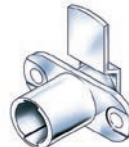
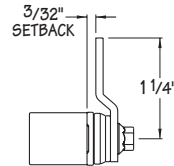
180° ROTATION

CB-080
TYPE 080
CYLINDER
BODY



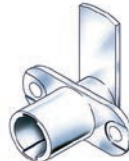
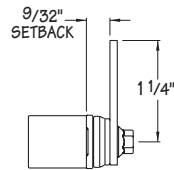
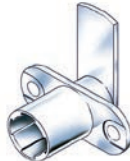
CB-180
TYPE 180
CYLINDER
BODY

CB-083
TYPE 083
CYLINDER
BODY



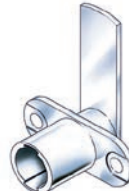
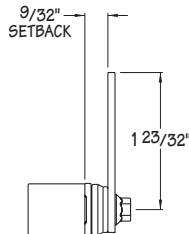
CB-183
TYPE 183
CYLINDER
BODY

CB-084
TYPE 084
CYLINDER
BODY



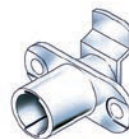
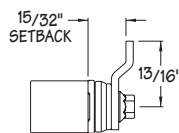
CB-184
TYPE 184
CYLINDER
BODY

CB-087
TYPE 087
CYLINDER
BODY



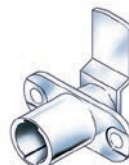
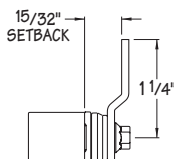
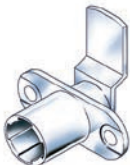
CB-187
TYPE 187
CYLINDER
BODY

CB-085
TYPE 085
CYLINDER
BODY



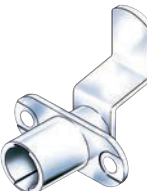
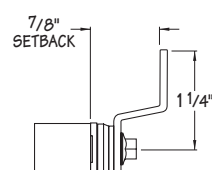
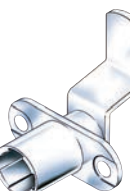
CB-185
TYPE 185
CYLINDER
BODY

CB-088
TYPE 088
CYLINDER
BODY



CB-188
TYPE 188
CYLINDER
BODY

CB-089
TYPE 089
CYLINDER
BODY



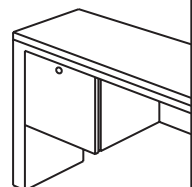
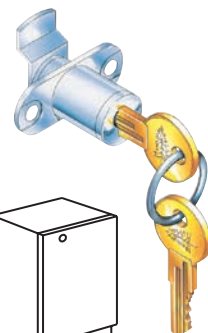
CB-189
TYPE 189
CYLINDER
BODY



LOCK PLUGS

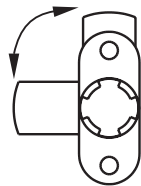
- LP-100 Nickel
- LP-200 Old English
- LP-300 Black
- LP-400 Statuary Bronze
- LP-500 Brass
- LP-700 Satin Nickel
- LP-800 White

NOTE:
CAM LOCKS
MUST BE
INSTALLED SO
THAT THEY LOCK
IN THE COUNTER-
CLOCKWISE
POSITION!

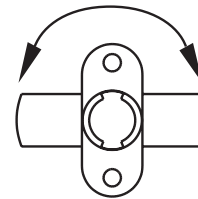
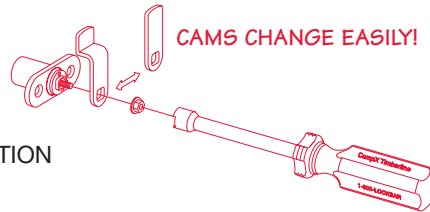


CAM LOCKS VERTICAL MOUNT

- AVAILABLE WITH EITHER 90° OR 180° ROTATION
- REQUIRES 16.5 MM DIAMETER HOLE
- MOUNTS IN 3/4" MATERIAL

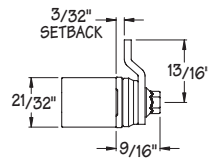
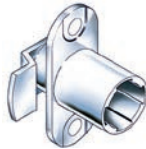


90° ROTATION

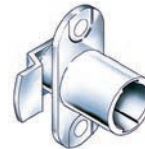


180° ROTATION

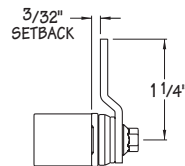
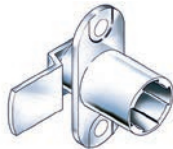
CB-090
TYPE 090
CYLINDER
BODY



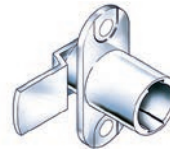
CB-190
TYPE 190
CYLINDER
BODY



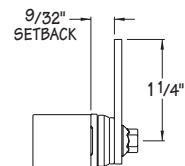
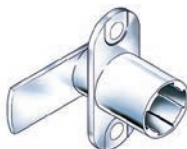
CB-093
TYPE 093
CYLINDER
BODY



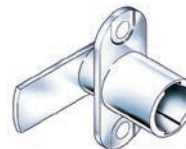
CB-193
TYPE 193
CYLINDER
BODY



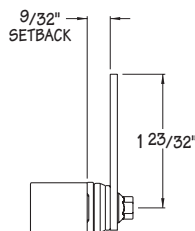
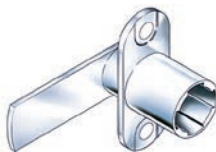
CB-094
TYPE 094
CYLINDER
BODY



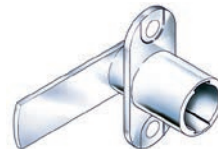
CB-194
TYPE 194
CYLINDER
BODY



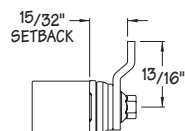
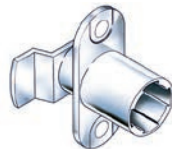
CB-097
TYPE 097
CYLINDER
BODY



CB-197
TYPE 197
CYLINDER
BODY



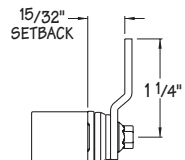
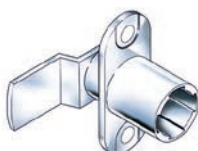
CB-095
TYPE 095
CYLINDER
BODY



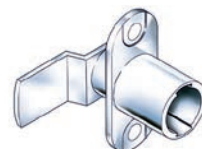
CB-195
TYPE 195
CYLINDER
BODY



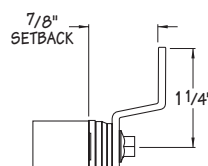
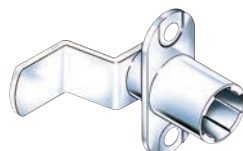
CB-098
TYPE 098
CYLINDER
BODY



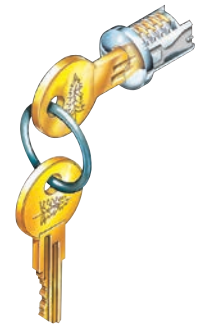
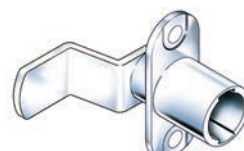
CB-198
TYPE 198
CYLINDER
BODY



CB-099
TYPE 099
CYLINDER
BODY



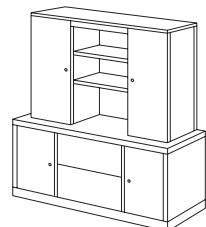
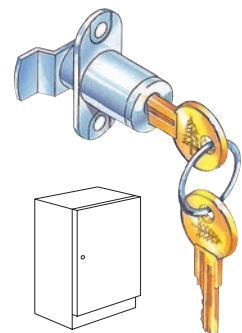
CB-199
TYPE 199
CYLINDER
BODY



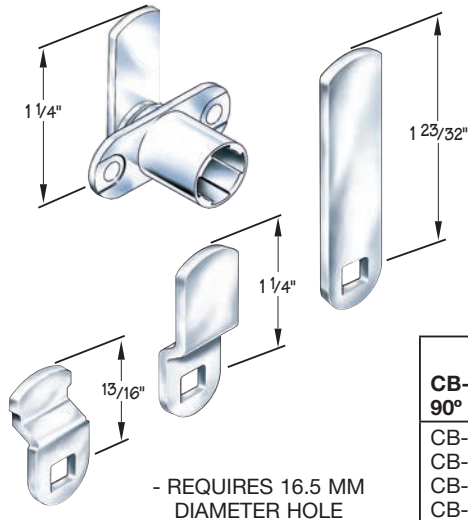
LOCK PLUGS

- LP-100 Nickel
- LP-200 Old English
- LP-300 Black
- LP-400 Statuary Bronze
- LP-500 Brass
- LP-700 Satin Nickel
- LP-800 White

**NOTE:
CAM LOCKS
MUST BE
INSTALLED SO
THAT THEY LOCK
IN THE COUNTER-
CLOCKWISE
POSITION!**



CAM LOCK KITS CB-165, CB-168, CB-169



Application - Universal lock for either doors or drawers. Each kit contains a variety of easily switched cams to accommodate most locking situations.

Operation - 90° or 180° cam rotation. Counter clockwise to lock.

Keying - Order lock plug separately.

Packaging - Cylinder supplied with two straight and two bent cams. Bent cams have setback of 15/32". Cam plates are zinc plated.

These Kits will Replace the Following Timberline Cam Locks:

CB-165 90° Rotation			CB-168 180° Rotation (Horizontal)		CB-169 180° Rotation (Vertical)	
CB-080	CB-083	CB-084	CB-180	CB-183	CB-190	CB-193
CB-085	CB-087	CB-088	CB-184	CB-185	CB-194	CB-195
CB-090	CB-093	CB-094	CB-187	CB-188	CB-197	CB-198
CB-095	CB-097	CB-098				

THREADED BARREL CAM LOCK KIT

CB-141 – Nickel Plated Cylinder
CB-143 – Black Plated Cylinder (shown)

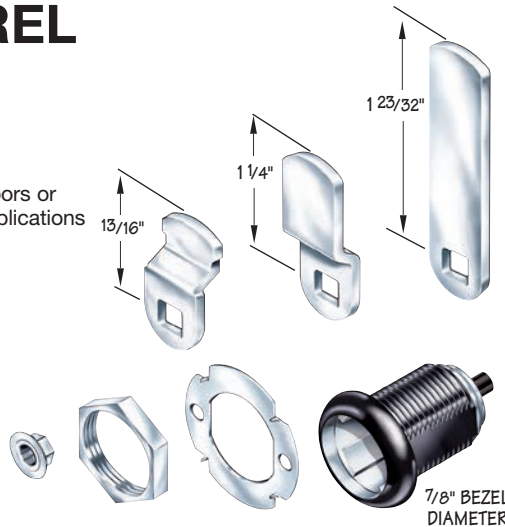
Application – Universal type lock for either doors or drawers. Kit will accommodate most locking applications for material thickness 1/16" – 1/2".

Industry-standard Double D hole can be used in metal applications.

Operation – 90 degree cam rotation. Counter clockwise to lock.

Keying – Order lock plugs separately.

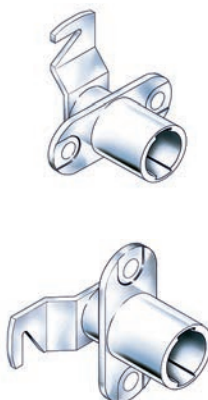
Packaging Contents – Cylinder supplied with one straight cam, two bent cams, flange nut, hex nut and spur washer. Cam plates are zinc plated.



LOCK PLUGS

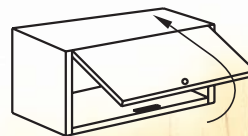
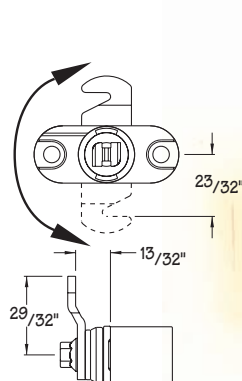
LP-100 Nickel
LP-200 Old English
LP-300 Black
LP-400 Statuary Bronze
LP-500 Brass
LP-700 Satin Nickel
LP-800 White

FLIPPER/TAMBOUR DOOR LOCK CB 181 & CB 191



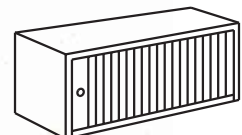
CB-181
TYPE 181
CYLINDER
BODY
HORIZONTAL
MOUNT

CB-191
TYPE 191
CYLINDER
BODY
VERTICAL
MOUNT

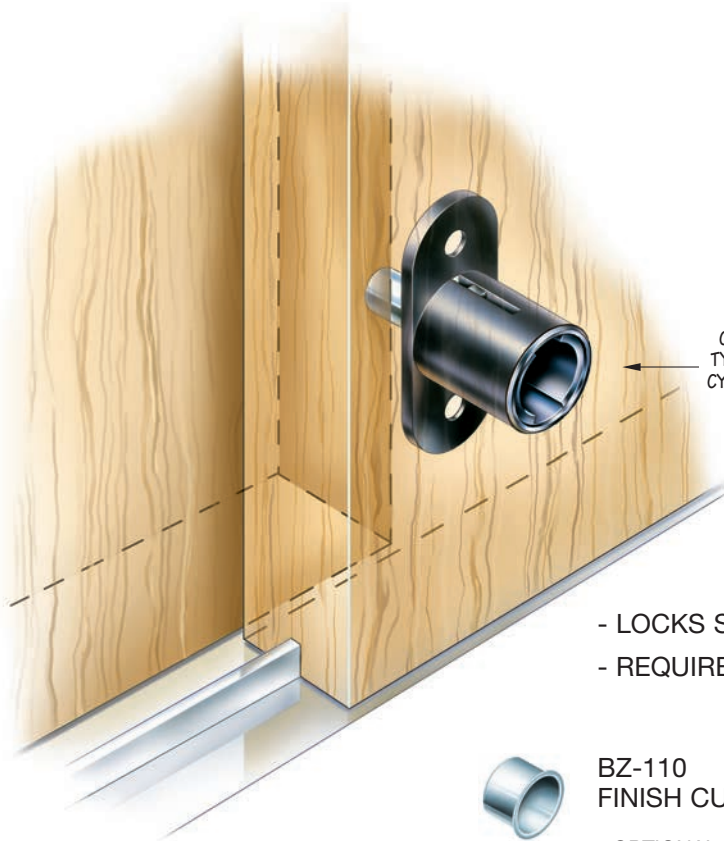


- REQUIRES 16.5 MM DIAMETER HOLE

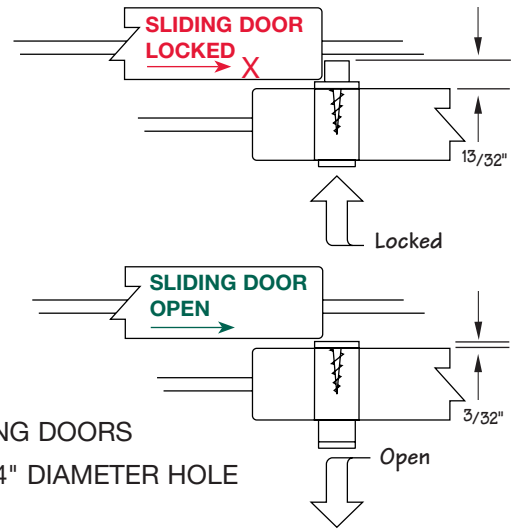
SP-181 STRIKE PLATE



PUSH LOCK TYPE 175



CB-175
TYPE 175
CYLINDER
BODY

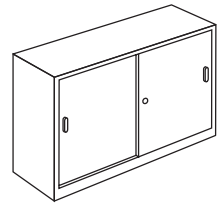


- LOCKS SLIDING DOORS
- REQUIRES 3/4" DIAMETER HOLE



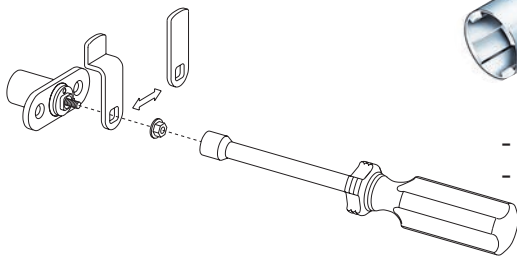
BZ-110
FINISH CUP

- OPTIONAL FINISH CUP FOR BACK DOOR
- REQUIRES 1/2" HOLE
- NICKEL FINISH

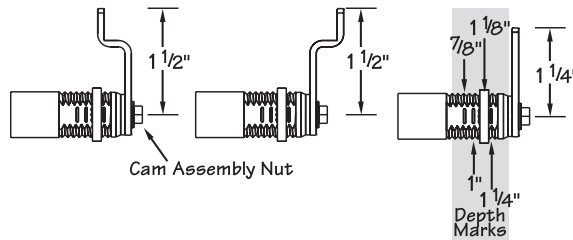


LOCK PLUGS

- LP-100 Nickel
- LP-200 Old English
- LP-300 Black
- LP-400 Statuary Bronze
- LP-500 Brass
- LP-700 Satin Nickel
- LP-800 White

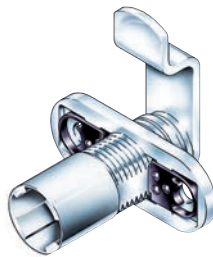


THE 'THICK PANEL LOCK' COMES PACKAGED WITH 2 DIFFERENT CAMS WHICH CAN BE ASSEMBLED TO THE LOCK IN ANY OF THE 3 ORIENTATIONS ILLUSTRATED TO THE RIGHT. THIS OFFERS SUFFICIENT FLEXIBILITY TO ADAPT TO MOST LOCKING SITUATIONS.



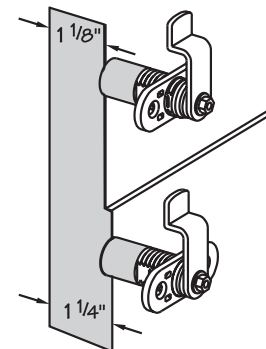
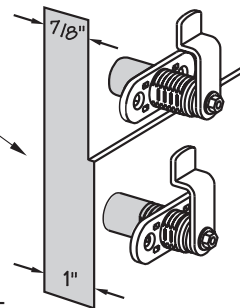
THICK PANEL LOCK TYPE 170

MOUNTING FLANGE
ADJUSTS TO ALLOW
LOCK TO BE MOUNTED
IN PANELS FROM 7/8"
THICK UP
TO 1 3/8" THICK



CB-170
TYPE 170
CYLINDER BODY

- REQUIRES 16.5 MM DIAMETER HOLE
- 90° ROTATION ONLY



DOUBLE DOOR LATCH

 **Watch the Double Door Latch**
video at compX.com/ddl

Patent Pending.



EASY TO INSTALL AND CAN WORK WITH ANY STYLE OF CABINET LOCK

NOTE: DEPENDING ON SIZE OF CABINET, TWO LATCHES
(ONE AT TOP AND ONE AT BOTTOM) MIGHT BE REQUIRED

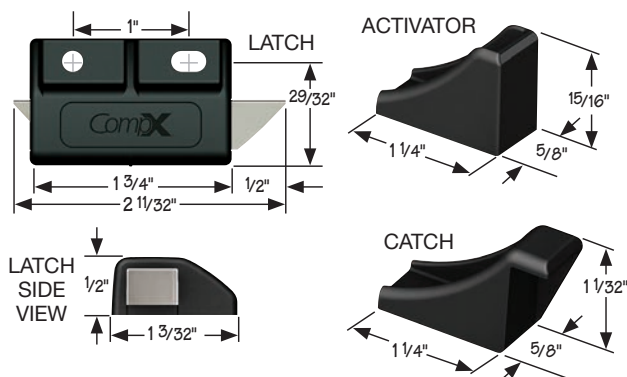
Lock Placement	Top Mount Kit	Bottom Mount Kit
Lock on Right Door	DL-200 Black Finish DL-200-W White Finish	DL-300 Black Finish DL-300-W White Finish
Lock on Left Door	DL-300 Black Finish DL-300-W White Finish	DL-200 Black Finish DL-200-W White Finish

Application – Allows two or three point locking for standard or wardrobe double door cabinets.

Operation – Secures doors with deadbolt or cam locks. Either door can be closed at anytime.

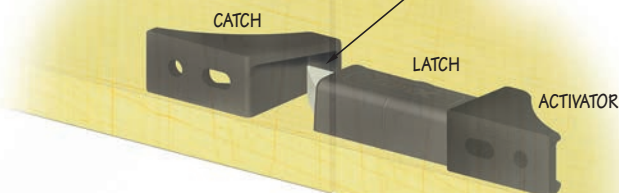
Finish – Black (shown) or White.

Packaging – Kits include parts below and mounting instructions.



CATCH ON THE SECOND DOOR
ACTS AS A SLAM LATCH AND
DOES NOT REQUIRE REACHING
INTO THE CABINET TO RELEASE

SIGNIFICANT ENGAGEMENT
BETWEEN THE CATCH AND LATCH
INCREASES SECURITY



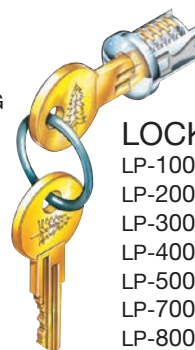
SYSTEM 260 WARDROBE LOCK

CB-260
TYPE 260
CYLINDER BODY
(VERTICAL
MOUNT)

FOR
HORIZONTAL
MOUNTING USE
CB-265 TYPE 265
CYLINDER BODY

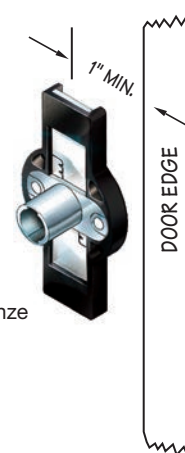


- FULL 1/2" WARDROBE BAR THROW
- 16.5 MM LOCK HOLE ONLY MACHINING REQUIRED



LOCK PLUGS

LP-100 Nickel
LP-200 Old English
LP-300 Black
LP-400 Statuary Bronze
LP-500 Brass
LP-700 Satin Nickel
LP-800 White

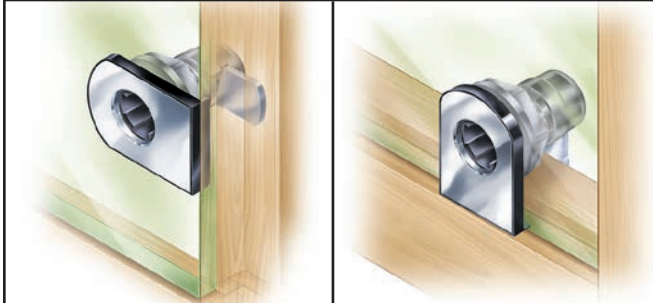


GLASS DOOR LOCK BORE THROUGH STYLE

- FOR SWING STYLE DOORS
- MOUNTS IN GLASS DOORS UP TO 3/8" THICK

TYPE 300 SERIES
HORIZONTAL MOUNT

TYPE 310 SERIES
VERTICAL MOUNT

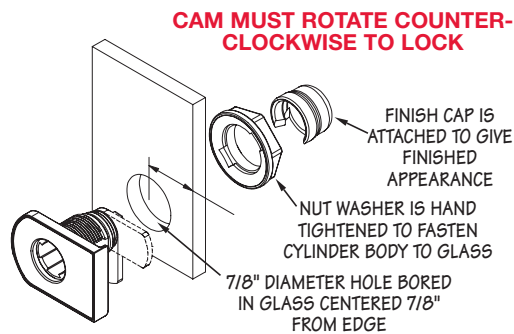


GLASS DOOR LOCK COMPRESSION MOUNT STYLE

- NON-BORE GLASS DOOR LOCKS
- FULLY CUSHIONED TO AVOID GLASS DAMAGE
- MOUNTS ON GLASS DOORS 1/4" TO 5/16" THICK

TYPE 350 SERIES
HORIZONTAL MOUNT

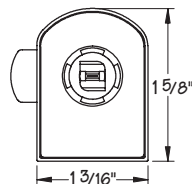
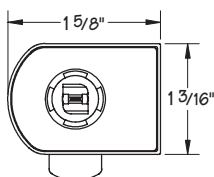
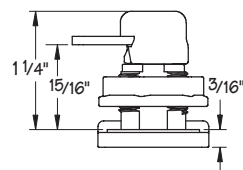
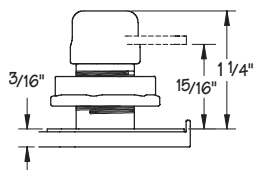
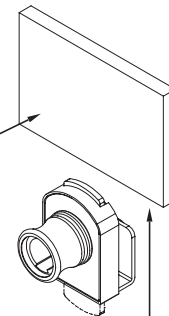
TYPE 360 SERIES
VERTICAL MOUNT



LOCK PLUGS

- LP-100 Nickel
- LP-500 Brass
- LP-700 Satin Nickel

LOCK SLIPS ONTO EDGE OF GLASS DOOR AT ANY LOCATION
NO BORING REQUIRED



HORIZONTAL MOUNT

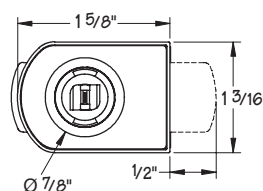
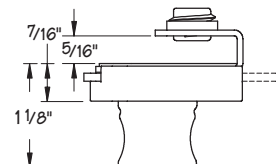
PART NUMBER	FINISH
CB-301	NICKEL
CB-305	BRASS
CB-307	SATIN NICKEL

VERTICAL MOUNT

PART NUMBER	FINISH
CB-311	NICKEL
CB-315	BRASS
CB-317	SATIN NICKEL

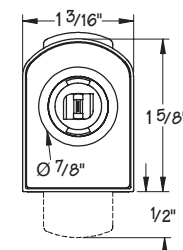
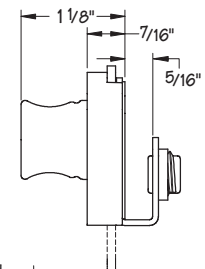
HORIZONTAL MOUNT

PART NUMBER	FINISH
CB-351	NICKEL
CB-355	BRASS
CB-357	SATIN NICKEL



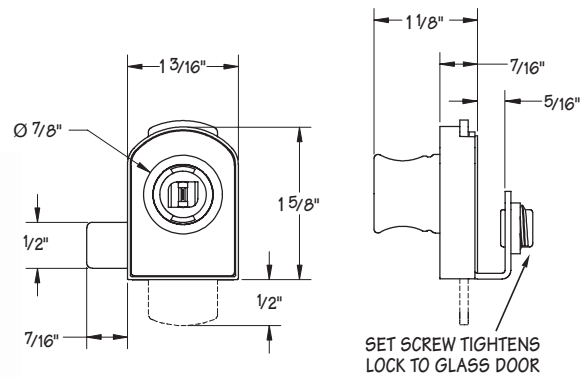
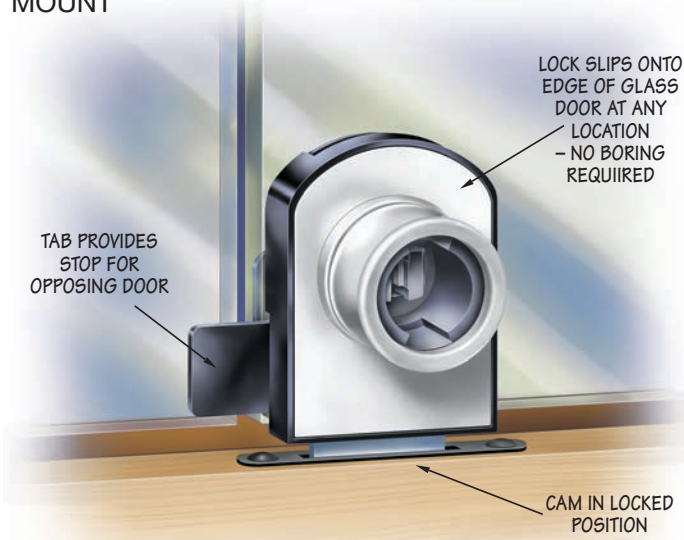
VERTICAL MOUNT

PART NUMBER	FINISH
CB-361	NICKEL
CB-365	BRASS
CB-367	SATIN NICKEL



GLASS DOOR LOCK DOUBLE DOOR STYLE

TYPE 370 SERIES
VERTICAL COMPRESSION
MOUNT



ACCESSORIES



KY-500 CHANGE TOOL

REQUIRED TO
REMOVE LOCK
PLUGS IN
CYLINDER
BODIES

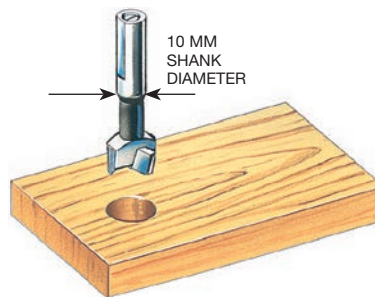


- FOR USE WITH ALL COMPTIMBERLINE CYLINDER BODIES
- WORKS AS A GENERAL THUMB LATCH WHEN KEYED LOCK PLUGS ARE NOT REQUIRED, AS A SHIPPING PLUG OR AS AN INSERT FOR TESTING LOCKS DURING MANUFACTURING

ALLOWS CYLINDER BODIES TO BE USED WITH 3/4" THROUGH 7/8" DIAMETER HOLES AND PERMITS USE OF LOCKS IN 7/8" THICK PANELS



- BZ-100 - Bezel Nickel
- BZ-200 - Bezel Old English
- BZ-300 - Bezel Black
- BZ-400 - Bezel Statuary Bronze
- BZ-500 - Bezel Brass
- BZ-700 - Bezel Satin Nickel
- BZ-800 - Bezel White



DB-165
16.5MM DRILL BIT

DRILLS THE PROPER DIAMETER HOLE FOR MOST CYLINDER BODIES



CC-100
CYLINDER FINISH CAP

COVERS CYLINDER BODY DURING FINISHING BEFORE LOCK PLUGS ARE INSTALLED



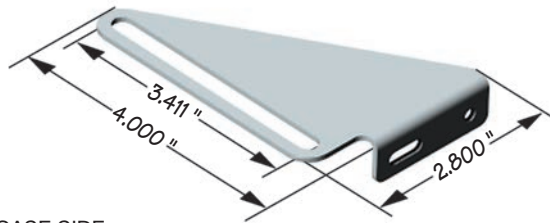
SP-300
SPACER FOR 5/8" PANEL

ALLOWS CAM LOCK CYLINDER BODIES TO BE USED IN 5/8" THICK PANELS



STRIKE PLATES

SP-500



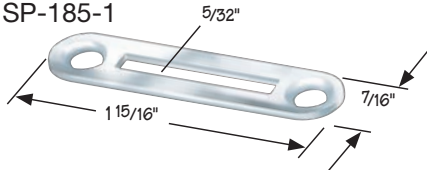
SCREWS TO CASE SIDE.
USE WHEN NO STRINGER AVAILABLE.

**Need a strike plate
for another lock?**

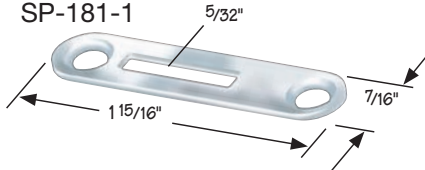
*CompX Timberline strike
plates can be used for any
CompX brand!*

STRIKE PLATES – NICKEL

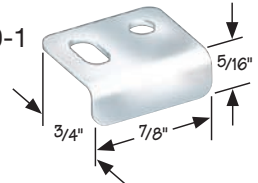
SP-185-1



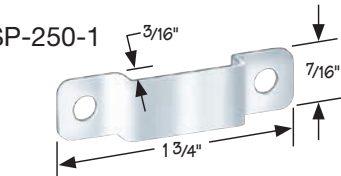
SP-181-1



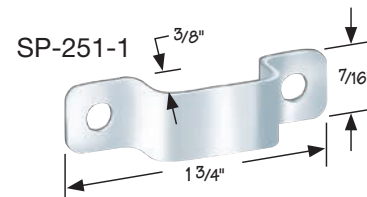
SP-100-1



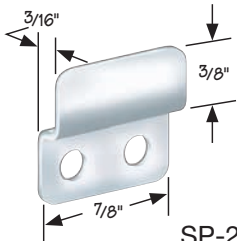
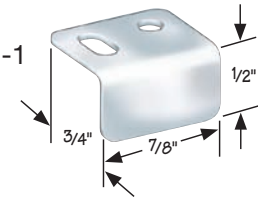
SP-250-1



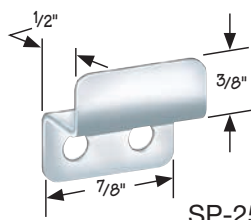
SP-251-1



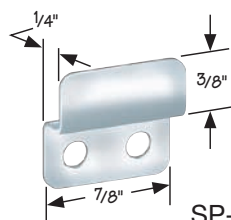
SP-101-1



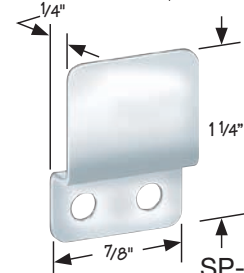
SP-255-1



SP-256-1



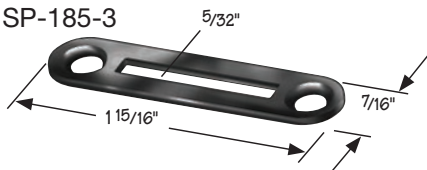
SP-257-1



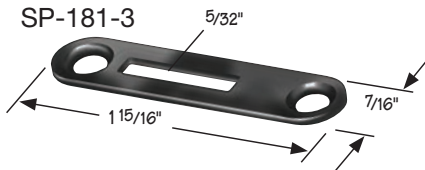
SP-258-1

STRIKE PLATES – BLACK

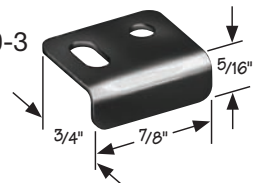
SP-185-3



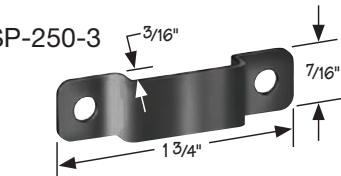
SP-181-3



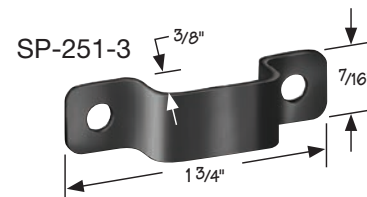
SP-100-3



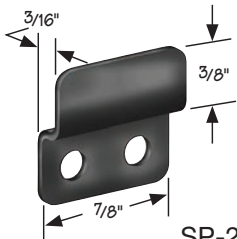
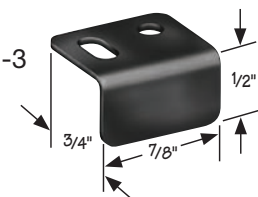
SP-250-3



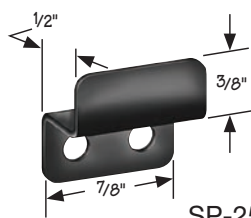
SP-251-3



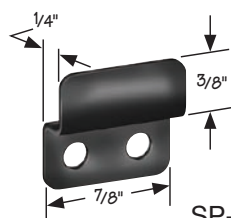
SP-101-3



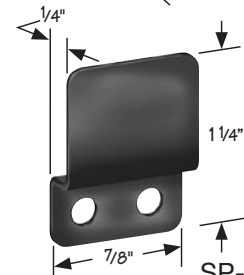
SP-255-3



SP-256-3



SP-257-3



SP-258-3

StealthLock))) - Keyless, Invisible Electronic Cabinet Lock

stealthlock.com

StealthLock works via radio frequency which allows wireless locking of multiple cabinet openings.

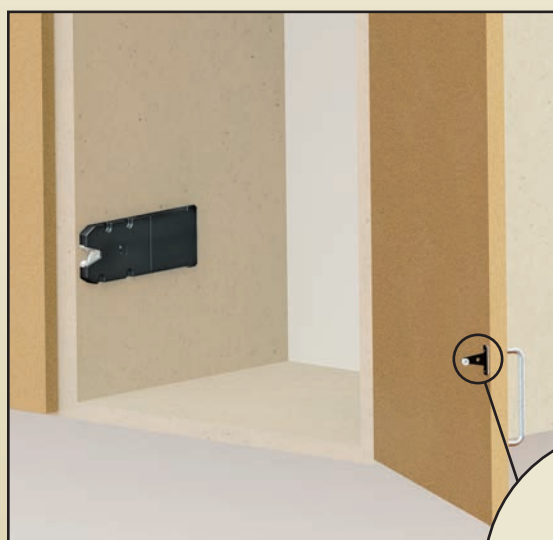
The **Transmitter Pad** broadcasts the code entered to lock or unlock the cabinet door or drawer.



The Transmitter Pad can mount anywhere within 15 feet of the Receiver Latch without wires.

StealthLock is recommended for use on cabinets made from:

- Wood and wood products
- Phenolic Resin
- Glass



The **Strike Plate** is mounted on the door or drawer to be locked and interfaces with the Receiver Latch.



The **Receiver Latch** mounts inside the cabinet, hidden from view and receives lock or unlock instruction from the Transmitter Pad.



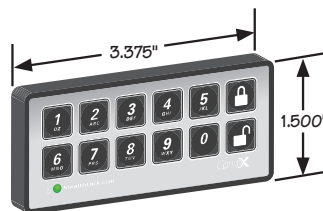
COMPONENTS

TP-100 – Transmitter Pad

- Operates with CR2032 coin battery, included
- Low battery indicator

Available in two versions:

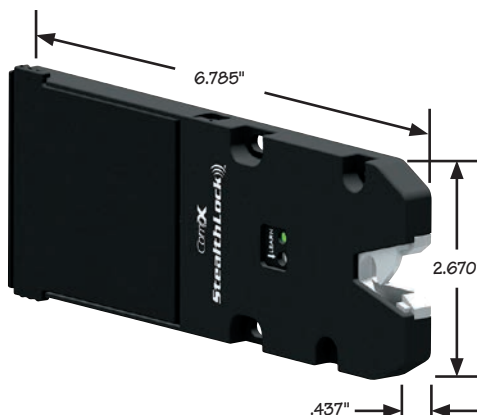
Standard – Use for most residential and general commercial applications



Dedicated – Use part number TP-150, special factory order, unique Transmitter Pad ID mates a Transmitter Pad to specific Receiver Latches. Ideal for lockers or users within close proximity of each other.

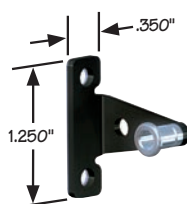
RL-100 – Receiver Latch

- Programmable using Transmitter Pad
- One required per door or drawer
- Mounts within 1/2" drawer suspension
- Operates with 4 AAA batteries



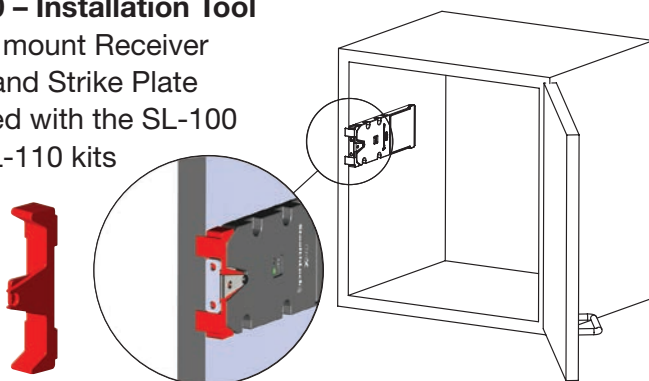
SP-600 – Strike Plate

- For door and drawer use
- Fits within 1/2" drawer suspension



TL-600 – Installation Tool

- Use to mount Receiver Latch and Strike Plate
- Included with the SL-100 and RL-110 kits



KITS

Standard version

SL-100 – StealthLock Kit

- Contains all parts necessary to lock one door or drawer
- Kit includes:
 - ♦ RL-100 – Receiver Latch
 - ♦ TP-100 – Transmitter Pad
 - ♦ SP-600 – Strike Plate
 - ♦ TL-600 – Installation Tool
 - ♦ required mounting screws

RL-110 – Receiver Latch Kit

- Contains all parts necessary to lock additional doors or drawers operated by existing Transmitter Pad
- Kit includes:
 - ♦ RL-100 – Receiver Latch
 - ♦ SP-600 – Strike Plate
 - ♦ TL-600 – Installation Tool
 - ♦ required mounting screws

Dedicated version

SL-150 Dedicated Preprogrammed Kits

For medium to large projects

Transmitter pads and receiver latches can be programmed at the factory to a customer-provided schedule. They are then ready for installation. If needed, StealthLock's modes (passage, self-locking and single use) can be reprogrammed after installation.

To download the *SL-150 Preprogrammed Kit: How to Order* sheet, go to **stealthlock.com** or contact us for more information.

StealthLock))) - Keyless, Invisible Electronic Cabinet Lock

ACCESSORIES

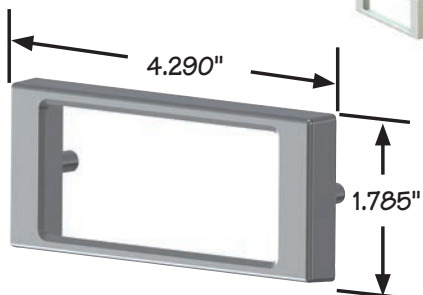
stealthlock.com

MP-700 Satin Nickel (shown)

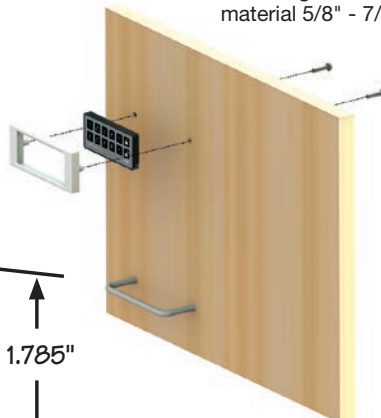
MP-300 Black

Mounting Plates

- Mounting screws and template included



Mounting screws fit material 5/8" - 7/8" thick



MP-700-WM Satin Nickel (shown)

MP-300-WM Black

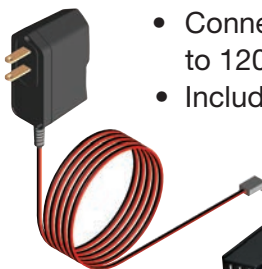
Wall-Mounting Plates

Allows mounting plate to be affixed to wall or other surfaces where rear access is unavailable.

AUXILIARY POWER SYSTEM

RL-AP1 - Power Supply

- Connects Receiver Latch to 120 VAC power
- Includes 5-1/2 foot cord



RL-APC-9VJ-10 - Power Cord - 9V Jump

- Provides emergency power to Receiver Latch using a 9 volt battery
- 10 foot cord length

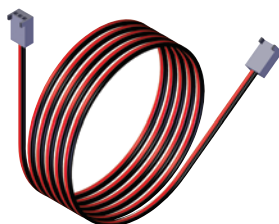


RL-APC - Power Cord

- Use to daisy chain Receiver Latches

Available lengths

- RL-APC-3 Power Cord - 3 ft.
- RL-APC-5 Power Cord - 5 ft.
- RL-APC-10 Power Cord - 10 ft.



RL-AP1 and RL-APC-9VJ-10 can power up to 10 Receiver Latches using the RL-APC Power Cords.

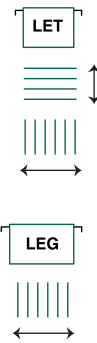
Visit stealthlock.com for programming and installation videos, frequently asked questions and more.



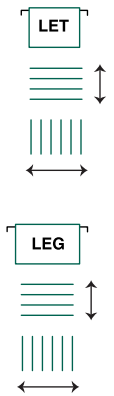
FILE FRAME SYSTEMS

DESK FILE DRAWERS

FILE DRAWER

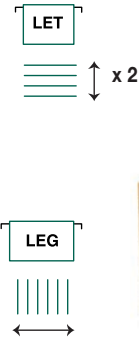


WIDE FILE DRAWER

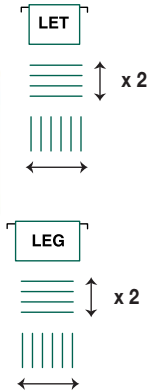


LATERAL FILE DRAWERS

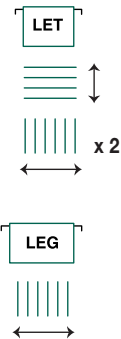
LATERAL FILE DRAWER



LATERAL FILE DRAWER WITH SIDE TO SIDE FILING



DEEP FILE DRAWERS

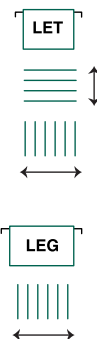


PLAIN DRAWER SYSTEMS

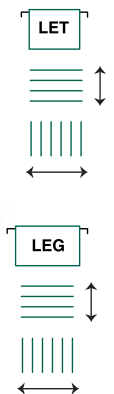
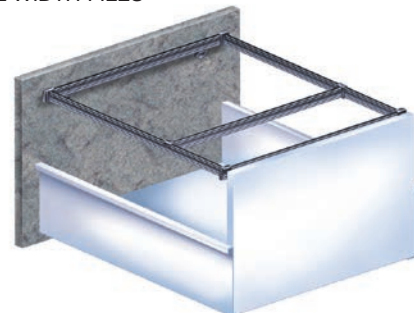


METAL DRAWER SYSTEMS

LETTER WIDTH FILES



LEGAL WIDTH FILES



FILING ACCOMMODATIONS BASED ON TYPICAL DRAWER SIZE – ACTUAL FILING CAPABILITIES WILL VARY



FILE FRAME CUT TO SIZE KITS

Available in black or white finish!

Step 1: Determine kit needed

INSIDE WIDTH BETWEEN 12" AND 15"

letter kit

Front and back rail; FF-1FL-13.153; 2 per kit

Cut to size bracket; FF-R25; 2 per kit

Cut to size cross rail; FF-SKA-25.000; 2 per kit

Side-to-side rail; FF-LET; 1 per kit

INSIDE WIDTH GREATER THAN 15"

legal kit

Front and back rail; FF-1FL-16.153; 2 per kit

Cut to size bracket; FF-R25; 2 per kit

Cut to size cross rail; FF-SKA-25.000; 2 per kit

Side-to-side rail; FF-LEG; 1 per kit

Step 2: Attach fixed rail

TOP OF RAIL SHOULD BE 9.5" MINIMUM ABOVE BOTTOM OF DRAWER

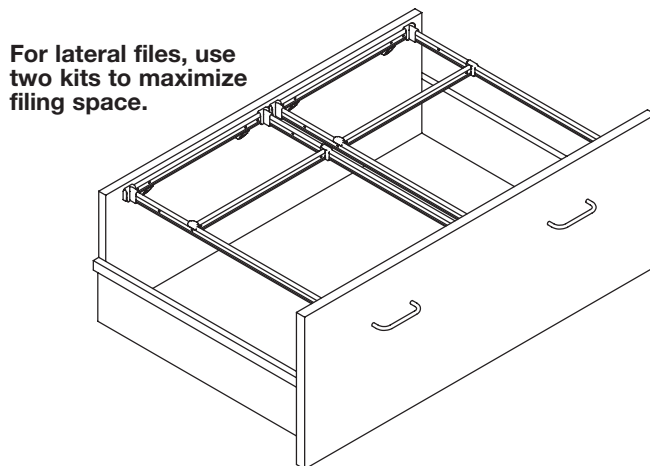
Step 3: Size, cut & install rails

CUT TO SIZE BRACKET AT REAR

Step 4: Install side-to-side rail

PRE-POSITIONED HOLES IN FRONT-TO-BACK RAILS

ALLOW FOR LETTER OR LEGAL SIDE-TO-SIDE FILING



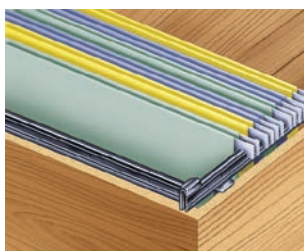
File Frame part numbers

Finish color	Drawer width: Letter	Drawer width: Legal
Black	FF-SK2	FF-SK3
White	FF-SK2-W	FF-SK3-W

KITS CONTAIN ALL COMPONENTS NEEDED TO FILE FRONT-TO-BACK OR SIDE-TO-SIDE IN PROPERLY SIZED DRAWERS. FILE FRAME KITS CAN BE USED IN EITHER FULL WOOD DRAWERS OR METAL DRAWER BOX SYSTEMS.



FILE FRAME SYSTEM ADVANTAGES



Typical file frame corner

Great Appearance... Functional Design

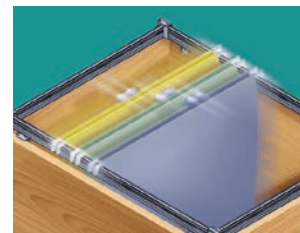
- Attractive, black material
- Files slide smoothly
 - Will not slide out of position when using files
 - Will not pull out when removing files
- Easy to adjust between filing configurations
 - Rails snap in and out of position without tools



Proven durable during load testing

Proven Design and Durability

- Easily supports twice the fully loaded weight of paper
- Weight is supported by the top of the drawer, not screws
- Withstands 50,000 back and forth cycles without paint wear or other degradation



Fits easily into place and slides smoothly to desired lock-in filing configuration

Cost Effective, Easy to Install, and Reliability of Supply

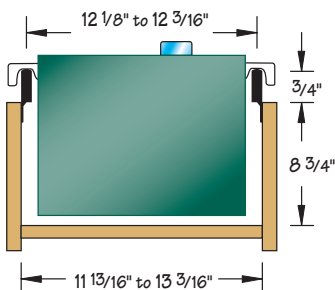
- Easy to install using only screws
- No machining required
- No need to tape frame system in place during shipping
- Easy to purchase directly from manufacturer
- One week typical lead time



File frame generally ships within one week

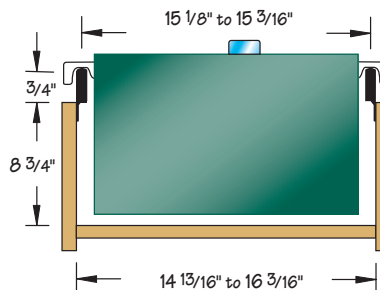
FILE FRAME FACTS

LETTER FILES

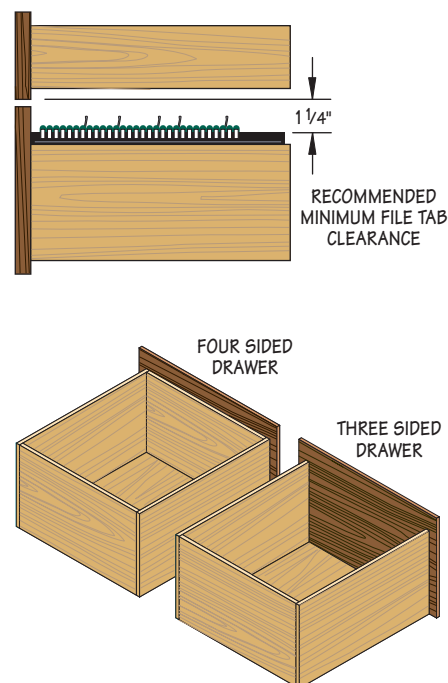


FILE FRAME SYSTEM CAN PROVIDE PERFECT LETTER FILING WITHIN THESE DIMENSIONS

LEGAL FILES



FILE FRAME SYSTEM CAN PROVIDE PERFECT LEGAL FILING WITHIN THESE DIMENSIONS





715 Center Street
Grayslake, IL 60030
1-800-LOCKBAR
PH: 1-847-752-2600 FAX: 1-847-752-2420
email: timberlineorders@compX.com
compX.com



The products contained in this catalog are protected by the following patents:
5,678,437; 1,331,036; 6,109,708; 6,550,874; 7,665,812; 8,516,864.

© 2014 CompX Timberline

Catalog #0614