

DISC & PIN TUMBLER LOCKS

Disc Tumbler Gang Lock Multiple Drawer Applications

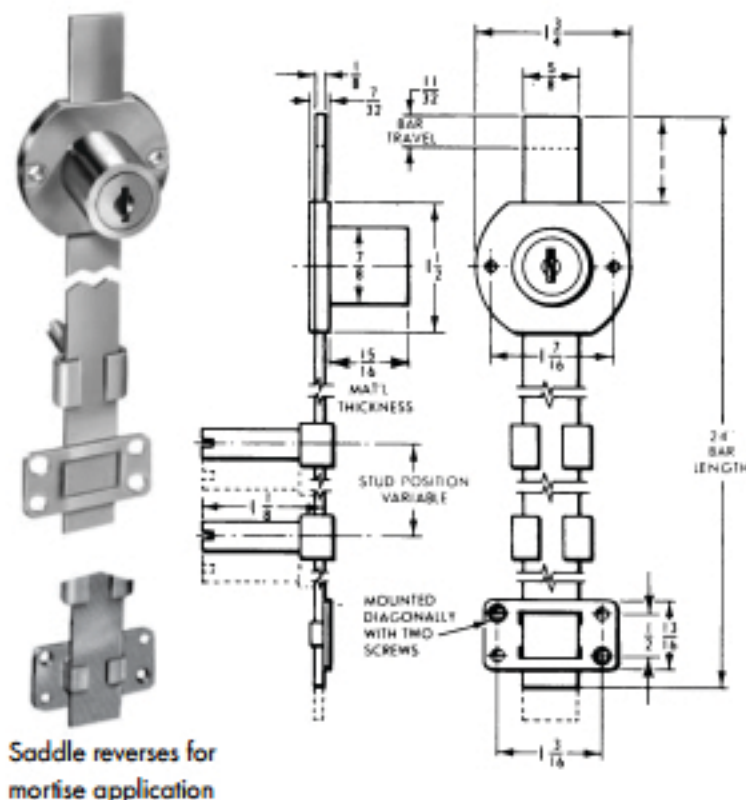
- For locking drawers in desk pedestals and other multiple drawer applications
 - Requires 7/8" diameter hole for cylinder, and dado for bar measuring 7/8" x 1/8" deep on inside of panel
 - Key removable in both locked and unlocked positions
 - Turning the key locks all drawers simultaneously (drawers must be in closed position); bar moves studs into notch in drawer or slide, preventing drawer movement
 - Supplied with two keys, three locking studs, three stud slides, saddle and mounting screws. If trim ring is required, see NLC2017 Series on page D-28
 - Stock Keying is specified on table below:
KA = All Keyed Alike to key number specified, master key will not work on these locks.
- Packing: 5 each per box.
- Sold in: Both broken and full box quantities. Discount available for full box orders.

Keying	Cylinder Length	Bar Travel	Bright Brass Item #	Bright Nickel Item #
KA 415	15/16"	11/32"	NLC8090KA415-3	NLC8090KA415-14A

Bore hole requirements;
also requires 7/8" x
1/8" deep dado for bar
on inside of panel



CompX
NATIONAL

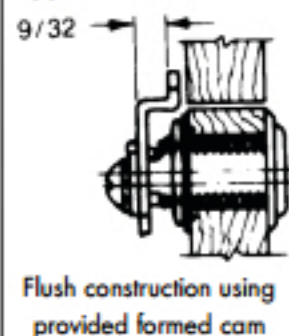


Pin Tumbler Cam Locks For Door And Drawers 90° Cam Turn, Flush Construction

- Each lock comes with one stop washer which allows the cam to turn 90°.
 - For drawers, right-hand or left-hand doors.
 - Key removable in both locked and unlocked positions.
 - Supplied with two keys, trim washer, spur washer (for wood), mounting nut and two cams (1-1/8" extension, 9/32" offset).
 - Stock Keying is specified on table below:
KA = All Keyed Alike to key number specified, master key will not work on these locks.
KD = All Keyed Different, various lock numbers, master key will not work on these locks
- Packing: 10 each per box.
- Sold in: Both broken and full box quantities. Discount available for full box orders.

Keying	Cylinder Length	Max Material Thickness	Satin Chrome Item #
KA 101	1-7/16"	1-1/8"	NLC8106KA101-26D
KA 915	1-7/16"	1-1/8"	NLC8106KA915-26D
KA 915	1-3/4"	1-3/8"	NLC8108KA915-26D

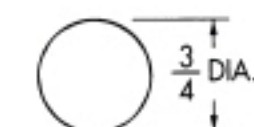
Applications:



NLC8106,
NLC8108



Bore hole requirement
for **metal** construc-



Bore hole requirement
for **wood** construc-

CompX
NATIONAL