

COMPLETE PRODUCT CATALOG



Family owned and operated since 1977

Door Closer Sales & Service

Overhead-Concealed
Surface • Floor • Automatic
Exit Devices • Hardware

Effective October 1, 2016

111 E. Charlotte St.
Johnstown, CO 80534
www.coloradodoorcontrol.com

P: 800.587.2611
F: 970.587.5409
E: colodoor@gmail.com

Table of Contents

Sales Policy _____	{2}
Rebuilt Closers _____	{4-58}
Floor Closers _____	{4-19}
Surface Applied _____	{20-41}
Overhead Concealed _____	{42-58}

To our customers:

Thank you for giving us the opportunity to service your needs. If for some reason you can't find exactly what you need in this catalog, please don't hesitate to reach out to us. We will do our very best to get you any requested information as soon as we can. It's because of all of you that we get to continue doing what we love every day. Our goal is to make sure that we exceed all your expectations time and time again.

Sincerely,



Mark Nordstrom
Owner
Colorado Door Control, LLC.

Sales Policy

Terms

Net 30 days from date of invoice. Once your account reaches 60 days past the date of invoice, your account will be subject to C.O.D. at our discretion. There will be a 10% finance charge on all past due invoices.

New account orders will be shipped C.O.D. or by credit card until credit has been approved. Once approved, customers will be notified and the above terms will then apply.

If we receive your check, and it is not honored by our bank or returned to us as NSF, your account will be subject to a \$50 service fee.

Pricing

Pricing in this catalog shows your cost and is subject to change without notice. The prices published are based on the exchange of old units. Exchange units are to be returned via prepaid freight by customer, unless other arrangements have been made.

Return Policy

Rebuilt products that become defective, within the terms of our guarantee, will be replaced at no charge. Returned products, suitable for resale, will be credited to your account less a re-stocking fee of 25% of the product net value. Returned products, which are damaged, may be assessed further charges. Freight charges for product returns are to be prepaid by the customer. Credit memos must be used towards the account balance unless approved by authorized personnel.

Limited Warranty

We warrant that our products, rebuilt under our trade name, are free from defects in workmanship and material under normal use & service. This warranty does not cover labor defects and/or damages due to improper installation, maintenance, storage, shipping & handling, misuse, abuse, accident, acts of God, or unauthorized service.

SURFACE & OHC – 1YR | FLOOR – 2YR | AUTOMATICS – 6MO

*All warranties are from original date of purchase

REBUILT CLOSERS

Floor

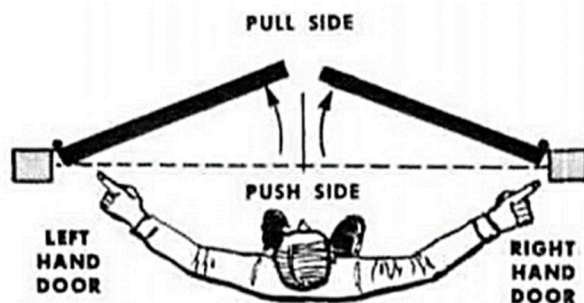
Surface Applied

Overhead Concealed

Floor Closers

Dorma	_____	{5}
Dor-O-Matic	_____	{6-11}
Kawneer/MAB	_____	{12-13}
LCN	_____	{14}
R&K	_____	{15}
Rixson	_____	{16-19}

Is my door right or left handed?



You can also stand with your back to the hinged jam.

If door swings to the left – it's a Left-Hand Door.

If door swings to the right – it's a Right-Hand Door.



DORMA BTS75 SERIES FLOOR CLOSER

Universal application range. Whether standard, narrow, or wide, whether LH, RH, or single or double-action – the DORMA BTS 75 V door spring is designed for all types of doors. A comprehensive program of accessories ensures that it can be used successfully with a wide variety of door constructions and floor coverings.

Maximum reliability and quality. Thanks to a wide range of functions which can be individually selected to suit different requirements, DORMA BTS 75 V floor springs offer maximum reliability and quality.

DORMA BTS80 SERIES FLOOR CLOSER

The BTS80 Series of floor-concealed door closers offer adaptability to almost any installation. The closer's compact body permits its use where a larger closer would be prohibitive. Versatility allows installation in thin slab concrete subfloor construction. A wide selection of interchangeable spindles makes the BTS80 suitable for virtually any floor covering or threshold application. Because the BTS80 can control exceptionally heavy single – and double – acting doors, you can incorporate the floor closer into almost any design to meet most materials, size, and weight requirements.

Features:

- CLOSER BODY IS NON-HANDED
- MECHANICAL BACK CHECK AT APPROXIMATELY 70°
- SELECTABLE DELAYED ACTION BETWEEN 175° AND 75°. EXTENDS THE CLOSING CYCLE TO ALLOW UNOBSTRUCTED PASSAGE.
- DELAYED ACTION IS FUNCTIONAL WHEN HOLD OPEN IS NOT ENGAGED.
- DUAL THERMOSTATIC CONTROL VALVES WITH SPECIAL HYDRAULIC FLUID PROVIDE CONTROLLED CLOSING FROM 175°.
- SELECTABLE MULTIPOINT HOLD OPENS BETWEEN APPROXIMATELY 75° AND 175°.
- ADJUSTMENT FOR START OF HOLD OPEN RANGE OR WHEN DELAYED ACTION RELEASES. ADJUSTABLE BETWEEN 75° AND 175°.



Standard spring size is #2. The Dorma BTS Floor Closer series is currently non-rebuildable due to odd gaskets and seals used in manufacturing. Call for current pricing on factory replacement closers.

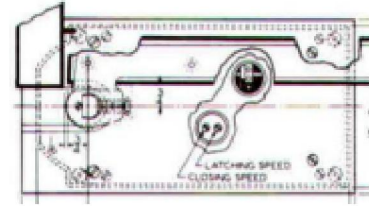
How to Identify: The BTS 75 and 80 Series models are easily identifiable by their markings on the top of the closer.

DOR-O-MATIC 200 SERIES FLOOR CLOSER

The Dor-O-Matic 200 model series includes five different closers: **200** (105° hold open), **201** (105° no hold open), **202** (90° hold open), **203** (90° no hold open), or **204** (175° hold open).

Features:

- HANDED
- SINGLE ACTING
- CENTER PIVOTED
- EXTERIOR AND INTERIOR USE



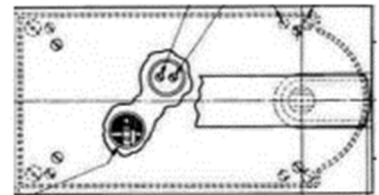
How to Identify: The model 200 series will be easily identifiable by markings on the top of the closer. Dor-O-Matic floor closers are machine gray in color. Case Size: $11\frac{23}{32}$ " x $5\frac{3}{16}$ "

DOR-O-MATIC 210 SERIES FLOOR CLOSER

The Dor-O-Matic 210 model series includes four different closers: **210** (105° hold open), **211** (105° no hold open), **212** (90° hold open), or **213** (90° no hold open).

Features:

- HANDED
- SINGLE ACTING
- OFFSET PIVOTED
- EXTERIOR AND INTERIOR USE



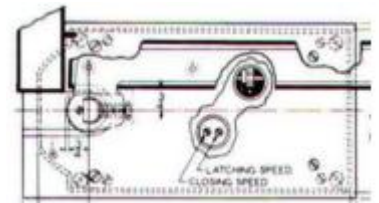
How to Identify: The model 210 series will be easily identifiable by markings on the top of the closer. Dor-O-Matic floor closers are machine gray in color. Case Size: $11\frac{23}{32}$ " x $5\frac{3}{16}$ "

DOR-O-MATIC 250 SERIES FLOOR CLOSER

The Dor-O-Matic 250 model series includes five different closers: **250** (105° hold open), **251** (105° no hold open), **252** (90° hold open), **253** (90° no hold open), or **254** (175° hold open).

Features:

- HANDED
- SINGLE ACTING
- OFFSET PIVOTED
- EXTERIOR AND INTERIOR USE



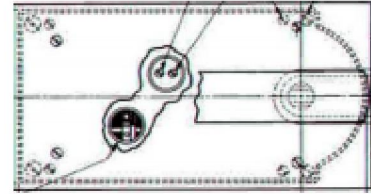
How to Identify: The model 250 series will be easily identifiable by markings on the top of the closer. Dor-O-Matic floor closers are machine gray in color. Case Size: $12\frac{9}{16}$ " x $6\frac{1}{2}$ "

DOR-O-MATIC 260 SERIES FLOOR CLOSER

The Dor-O-Matic 260 model series includes four different closers: **260** (105° hold open), **261** (105° no hold open), **262** (90° hold open), or **263** (90° no hold open).

Features:

- HANDED
- SINGLE ACTING
- CENTER PIVOTED
- EXTERIOR AND INTERIOR USE



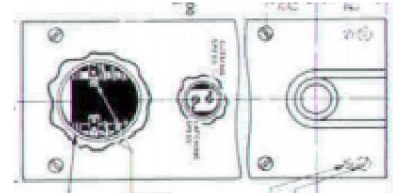
How to Identify: The model 260 series will be easily identifiable by markings on the top of the closer. Dor-O-Matic floor closers are machine gray in color. Case Size: 12⁹/₁₆" x 6¹/₈"

DOR-O-MATIC 300 SERIES FLOOR CLOSER

The Dor-O-Matic 300 model series includes four different closers: **300** (105° hold open), **301** (105° no hold open), **302** (90° hold open), or **303** (90° no hold open).

Features:

- NON-HANDED
- DOUBLE ACTING
- CENTER PIVOTED
- EXTERIOR AND HEAVY DUTY INTERIOR USE



How to Identify: The model 300 series will be easily identifiable by markings on the top of the closer. Dor-O-Matic floor closers are machine gray in color. Case Size: 14⁹/₁₆" x 5³/₈"

DOR-O-MATIC 400 SERIES FLOOR CLOSER

The Dor-O-Matic 400 model series includes four different closers: **400** (105° hold open), **401** (105° no hold open), **402** (90° hold open), or **403** (90° no hold open).

Features:

- NON-HANDED
- DOUBLE ACTING
- CENTER PIVOTED
- EXTERIOR AND HEAVY DUTY INTERIOR USE

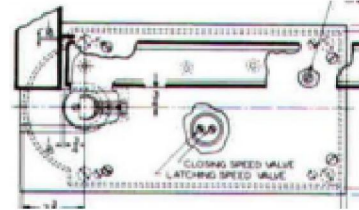
How to Identify: The model 400 series will be easily identifiable by markings on the top of the closer. Dor-O-Matic floor closers are machine gray in color. Case Size: 17" x 6¹/₁₆"

DOR-O-MATIC 2500 HYDRA-CUSHION FLOOR CLOSER

The Dor-O-Matic 2500 Hydra-Cushion model series includes four different closers: **2500** (105° hold open), **2510** (105° no hold open), **2520** (90° hold open), or **2530** (90° no hold open).

Features:

- HYDRAULIC BACK CHECK
- HANDED
- SINGLE ACTING
- OFFSET PIVOTED
- EXTERIOR AND HEAVY DUTY INTERIOR USE



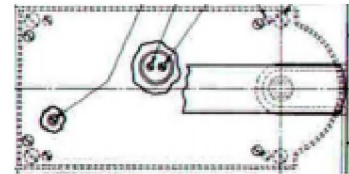
How to Identify: The model 2500 Hydra-Cushion series will be easily identifiable by markings on the top of the closer. Dor-O-Matic floor closers are machine gray in color. Case Size: 12⁹/₁₆" x 6¹/₈"

DOR-O-MATIC 2600 HYDRA-CUSHION FLOOR CLOSER

The Dor-O-Matic 2600 Hydra-Cushion model series includes four different closers: **2600** (105° hold open), **2610** (105° no hold open), **2620** (90° hold open), or **2630** (90° no hold open).

Features:

- HYDRAULIC BACK CHECK
- HANDED
- SINGLE ACTING
- CENTER PIVOTED
- EXTERIOR AND HEAVY DUTY INTERIOR USE



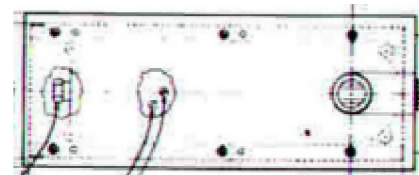
How to Identify: The model 2600 Hydra-Cushion series will be easily identifiable by markings on the top of the closer. Dor-O-Matic floor closers are machine gray in color. Case Size: 12⁹/₁₆" x 6¹/₈"

DOR-O-MATIC 3200 THINLINE FLOOR CLOSER

The Dor-O-Matic 3200 Thinline model series includes four different closers: **3200** (105° hold open), **3201** (105° no hold open), **3202** (90° hold open), or **3203** (90° no hold open).

Features:

- HANDED AND NON-HANDED
- SINGLE ACTING AND DOUBLE ACTING
- CENTER PIVOTED
- EXTERIOR AND INTERIOR USE



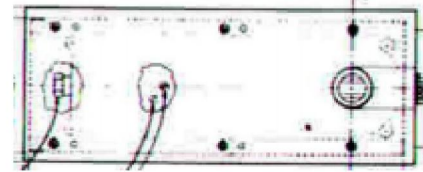
How to Identify: The model 3200 Thinline series will be easily identifiable by markings on the top of the closer. Dor-O-Matic floor closers are machine gray in color. Case Size: 16¹/₂" x 5¹/₂"

DOR-O-MATIC 3300 THINLINE FLOOR CLOSER

The Dor-O-Matic 3300 Thinline model series includes four different closers: **3300** (105° hold open), **3301** (105° no hold open), **3302** (90° hold open), or **3303** (90° no hold open).

Features:

- HANDED AND NON-HANDED
- SINGLE ACTING AND DOUBLE ACTING
- CENTER PIVOTED
- EXTERIOR AND INTERIOR USE



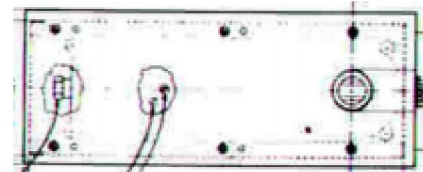
How to Identify: The model 3300 Thinline series will be easily identifiable by markings on the top of the closer. Dor-O-Matic floor closers are machine gray in color. Case Size: 16 $\frac{1}{2}$ " x 5 $\frac{1}{2}$ "

DOR-O-MATIC 3400 THINLINE FLOOR CLOSER

The Dor-O-Matic 3400 Thinline model series includes four different closers: **3400** (105° hold open), **3401** (105° no hold open), **3402** (90° hold open), or **3403** (90° no hold open).

Features:

- HANDED AND NON-HANDED
- SINGLE ACTING AND DOUBLE ACTING
- CENTER PIVOTED
- EXTERIOR AND INTERIOR USE



How to Identify: The model 3400 Thinline series will be easily identifiable by markings on the top of the closer. Dor-O-Matic floor closers are machine gray in color. Case Size: 16 $\frac{1}{2}$ " x 5 $\frac{1}{2}$ "

DOR-O-MATIC 3250 THINLINE FLOOR CLOSER

The Dor-O-Matic 3250 Thinline model series includes four different closers: **3250** (105° hold open), **3251** (105° no hold open), **3252** (90° hold open), or **3253** (90° no hold open).

Features:

- HANDED
- SINGLE ACTING
- OFFSET PIVOTED
- EXTERIOR AND INTERIOR USE



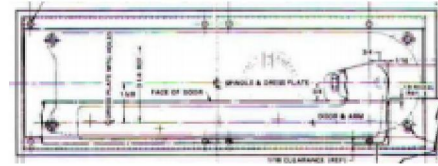
How to Identify: The model 3250 Thinline series will be easily identifiable by markings on the top of the closer. Dor-O-Matic floor closers are machine gray in color. Case Size: 16 $\frac{1}{2}$ " x 5 $\frac{1}{2}$ "

DOR-O-MATIC 3350 THINLINE FLOOR CLOSER

The Dor-O-Matic 3350 Thinline model series includes four different closers: **3350** (105° hold open), **3351** (105° no hold open), **3352** (90° hold open), or **3353** (90° no hold open).

Features:

- HANDED
- SINGLE ACTING
- OFFSET PIVOTED
- EXTERIOR AND INTERIOR USE



How to Identify: The model 3350 Thinline series will be easily identifiable by markings on the top of the closer. Dor-O-Matic floor closers are machine gray in color. Case Size: 16¹/₂" x 5¹/₂"

DOR-O-MATIC 3450 THINLINE FLOOR CLOSER

The Dor-O-Matic 3450 Thinline model series includes four different closers: **3450** (105° hold open), **3451** (105° no hold open), **3452** (90° hold open), or **3453** (90° no hold open).

Features:

- HANDED
- SINGLE ACTING
- OFFSET PIVOTED
- EXTERIOR AND INTERIOR USE



How to Identify: The model 3450 Thinline series will be easily identifiable by markings on the top of the closer. Dor-O-Matic floor closers are machine gray in color. Case Size: 16¹/₂" x 5¹/₂"

DOR-O-MATIC 3600 HYDRA-CUSHION FLOOR CLOSER

The Dor-O-Matic 3600 Hydra-Cushion model series includes four different closers: **3600** (105° hold open), **3610** (105° no hold open), **3620** (90° hold open), or **3630** (90° no hold open).

Features:

- HYDRAULIC BACK CHECK
- HANDED
- SINGLE ACTING
- CENTER PIVOTED
- EXTERIOR AND HEAVY DUTY INTERIOR USE



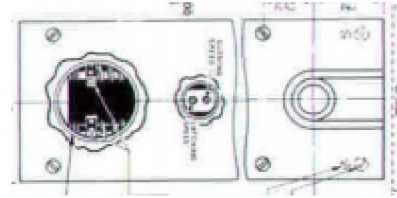
How to Identify: The model 3600 Hydra-Cushion series will be easily identifiable by markings on the top of the closer. Dor-O-Matic floor closers are machine gray in color. Case Size: 12⁹/₁₆" x 6¹/₈"

DOR-O-MATIC 4000 SERIES FLOOR CLOSER

The Dor-O-Matic 4000 model series includes four different closers: **4000** (105° hold open), **4010** (105° no hold open), **4020** (90° hold open), or **4030** (90° no hold open).

Features:

- NON-HANDED
- DOUBLE ACTING
- CENTER PIVOTED
- EXTERIOR AND HEAVY DUTY INTERIOR USE



How to Identify: The model 4000 series will be easily identifiable by markings on the top of the closer. Dor-O-Matic floor closers are machine gray in color. Case Size: 14⁹/₁₆" x 5³/₈"

KAWNEER MODEL 6300 FLOOR CLOSER

The Kawneer model 6300 series closer is either 105° hold open, or 105° no hold open, and uses a sized spring.

Features:

- NON-HANDED
- DOUBLE ACTING
- OFFSET AND CENTER PIVOTED
- EXTERIOR AND INTERIOR USE

How to Identify: The model 6300 series will be easily identifiable by markings on the top of the closer. Kawneer / MAB floor closers are dark bronze in color.

KAWNEER MODEL 6400 FLOOR CLOSER

The Kawneer model 6400 series closer is either 105° hold open, or 105° no hold open, and uses a sized spring.

Features:

- NON-HANDED
- DOUBLE ACTING
- OFFSET AND CENTER PIVOTED
- EXTERIOR AND INTERIOR USE

How to Identify: The model 6400 series will be easily identifiable by markings on the top of the closer. Kawneer / MAB floor closers are dark bronze in color.

KAWNEER MODEL 7300 FLOOR CLOSER

The Kawneer model 7300 series closer is either 105° hold open, or 105° no hold open, and uses a sized spring.

Features:

- NON-HANDED
- DOUBLE ACTING
- OFFSET AND CENTER PIVOTED
- EXTERIOR AND INTERIOR USE

How to Identify: The model 7300 series will be easily identifiable by markings on the top of the closer. Kawneer / MAB floor closers are dark bronze in color.

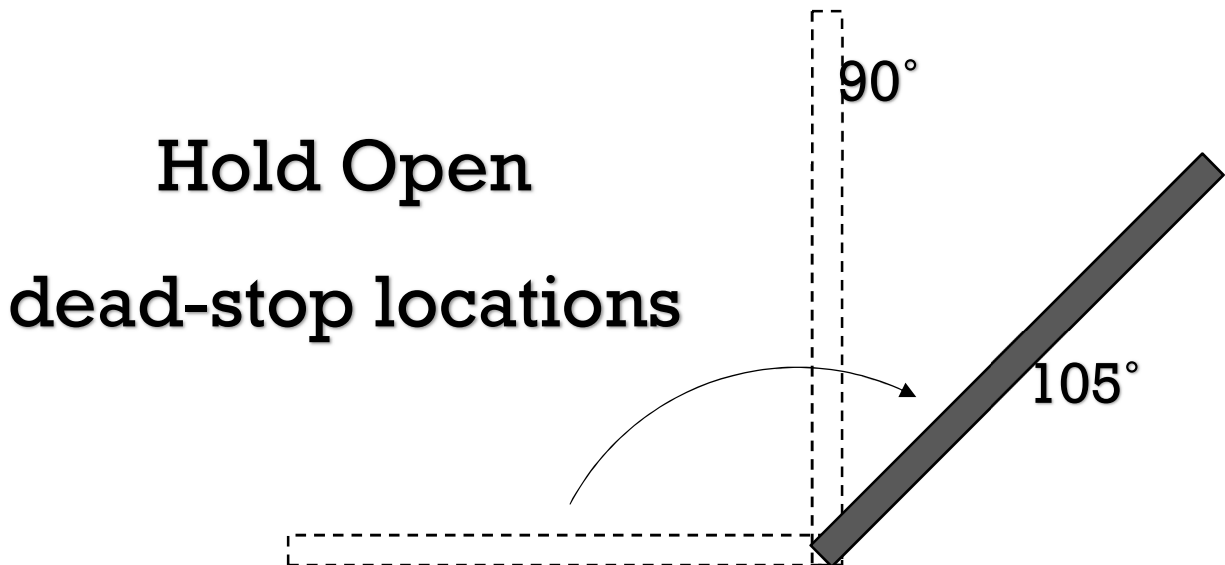
KAWNEER MODEL 7500 FLOOR CLOSER

The Kawneer model 7500 series closer is either 105° hold open, or 105° no hold open, and uses a sized spring.

Features:

- NON-HANDED
- DOUBLE ACTING
- OFFSET AND CENTER PIVOTED
- EXTERIOR AND INTERIOR USE

How to Identify: The model 7500 series will be easily identifiable by markings on the top of the closer. Kawneer / MAB floor closers are dark bronze in color.



LCN MODELS 2 | 4 | 6 FLOOR CLOSER

The LCN models 2, 4, & 6 closers are no hold open, and use a sized spring.

Features:

- HANDED
- SINGLE ACTING
- BUTT HUNG
- EXTERIOR AND INTERIOR USE

How to Identify: The models 2, 4, & 6 are all easily identifiable by markings on the top of the closer.

LCN floor closers are aluminum in color. Case Size: 12½" x 5⅛"

LCN MODEL 44 | 46 SERIES FLOOR CLOSER

The LCN models 44 & 46 closers are no hold open, and use a sized spring.

Features:

- NON-HANDED
- DOUBLE ACTING
- CENTER HUNG
- EXTERIOR AND INTERIOR USE

How to Identify: The models 44 & 46 are both easily identifiable by markings on the top of the closer.

LCN floor closers are aluminum in color.



R&K MODEL 5 SERIES FLOOR CLOSER

The R&K model 5 series includes ten different closers: **5-100** (LH-90° no hold open), **5-105** (RH-90° no hold open), **5-110** (LH-95° hold open), **5-115** (RH-95° hold open), **5-120** (95° hold open), **5-125** (85° no hold open), **5-150** (LH-110° hold open), **5-155** (RH-110° hold open), **5-180** (LH-100° no hold open), **5-185** (RH-100° no hold open).

Features:

- HANDED AND NON-HANDED
- SINGLE ACTING AND DOUBLE ACTING
- SIZED SPRING T4/T6/T8
- EXTERIOR AND INTERIOR USE

How to Identify: The model 5 series is easily identifiable by markings on the top of the closer. R&K floor closers are blue in color. Case Size: 6" x 6"

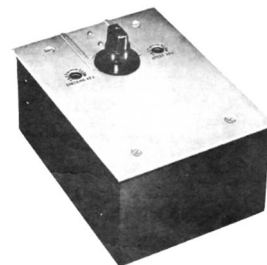
R&K MODEL 10 SERIES FLOOR CLOSER

The R&K model series includes ten different closers: **10-100** (LH-90° no hold open), **10-105** (RH-90° no hold open), **10-110** (LH-95° hold open), **10-115** (RH-95° hold open), **10-120** (95° hold open), **10-125** (85° no hold open), **10-150** (LH-110° hold open), **10-155** (RH-110° hold open), **10-180** (LH-100° no hold open), **10-185** (RH-100° no hold open).

Features:

- HANDED AND NON-HANDED
- SINGLE ACTING AND DOUBLE ACTING
- SIZED SPRING T4/T6/T8
- EXTERIOR AND INTERIOR USE

How to Identify: The model 5 series is easily identifiable by markings on the top of the closer. R&K floor closers are blue in color. Case Size: 8¹/₂" x 6¹/₄"

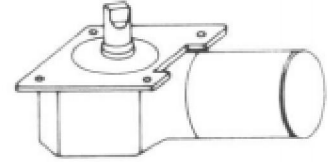


RIXSON DUO-CHECK SERIES FLOOR CLOSER

The Rixson Duo-Check series includes four different closers: **10** (old/new style 90° hold open), **12** (old/new style 105° no hold open), **15** (old/new style 90° hold open), **16** (old/new style 105° no hold open).

Features:

- NON-HANDED
- CENTER HUNG
- DOUBLE ACTING
- INTERIOR USE
- SIZED SPRING 10/12/15/16



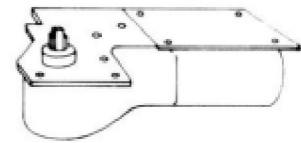
How to Identify: The Duo-Check series will be identifiable by the plate size and the shape of the shaft. Rixson floor closers are dark bronze in color. Old style shaft is rounded with pin; new style shaft is rectangular. Plate Size: $4\frac{1}{2}'' \times 8\frac{7}{8}''$

RIXSON UNI-CHECK SERIES FLOOR CLOSER

The Rixson Uni-Check series includes four different closers: **65** (15°, 85°, 90°, 100°, 120° or 160° hold open/no hold open), **66** (15°, 85°, 90°, 100°, 120° or 160° hold open/no hold open), **67** (85°, 90°, 100°, 120° or 160° hold open/no hold open), **68** (85°, 90°, 100°, 120° or 160° hold open/no hold open).

Features:

- HANDED
- OFFSET HUNG
- SINGLE ACTING
- INTERIOR USE
- SIZED SPRING 65/66/67/68



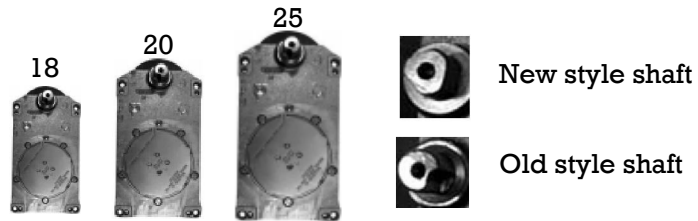
How to Identify: The Uni-Check series will be identifiable by the odd plate size. Rixson floor closers are dark bronze in color. Plate Size: $10\frac{9}{64}'' \times 2\frac{27}{32}''$ (at narrowest point)

RIXSON MODELS 18, 20 & 25 SERIES FLOOR CLOSER

The Rixson models 18, 21 & 26 series are available in 180° no hold open, and either as old or new style. The 18 series closer is only available in the old style, has a keyed spindle, and only for interior use.

Features:

- HANDED
- OFFSET HUNG
- SINGLE ACTING
- INTERIOR AND EXTERIOR USE



How to Identify: The models 18, 21 & 26 series will be identifiable by the case size and the shape of the shaft. Rixson floor closers are dark bronze in color. Old style shaft is a keyed spindle; new style shaft is a triangle. Case Size: **18:** 7¹/₈" x 4¹/₈" | **20:** 8¹/₂" x 4³/₄" | **25:** 9¹/₂" x 5¹/₂"

RIXSON MODELS 21 & 26 SERIES FLOOR CLOSER

The Rixson models 21 & 26 series are both available in hold open, or no hold open, as well as old and new style.

Features:

- HANDED
- CENTER HUNG
- SINGLE ACTING
- INTERIOR AND EXTERIOR USE

How to Identify: The models 21 & 26 series will be identifiable by the case size and the shape of the shaft. Rixson floor closers are dark bronze in color. Case Size: **21:** 10³/₃₂" x 5" | **26:** 11¹/₈" x 5⁷/₈"

RIXSON MODEL 27 SERIES FLOOR CLOSER

The Rixson model 27 series is available in 85°, 90° or 105° hold open/no hold open; and 85°, 90° or 105° selective hold open.

Features:

- HANDED
- OFFSET HUNG
- SINGLE ACTING
- INTERIOR AND EXTERIOR USE

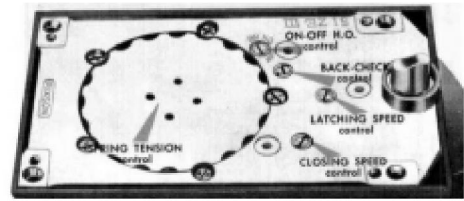
How to Identify: The model 27 series will be identifiable by the case size and the shape of the shaft. Rixson floor closers are dark bronze in color. Case Size: 9³/₁₆" x 5⁷/₈"

RIXSON MODEL 28 SERIES FLOOR CLOSER

The Rixson model 28 series is available in 85°, 90° or 105° hold open/no hold open; and 85°, 90° or 105° selective hold open.

Features:

- HANDED
- CENTER HUNG
- SINGLE ACTING
- INTERIOR AND EXTERIOR USE



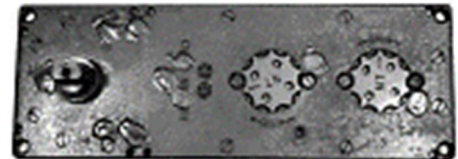
How to Identify: The model 28 series will be identifiable by the case size and the shape of the shaft. Rixson floor closers are dark bronze in color. Case Size: 8¹/₂" x 5⁷/₈"

RIXSON MODELS 30 & 40 FLOOR CLOSER

The Rixson models 30 & 40 are available in either 90° or 100° hold open/non-hold open.

Features:

- NON-HANDED
- CENTER HUNG
- DOUBLE ACTING
- INTERIOR AND EXTERIOR USE



How to Identify: The model 30 & 40 series will both be identifiable by the case size and the shape of the shaft. Rixson floor closers are dark bronze in color. Case Size: **30:**14⁹/₁₆" x 5³/₈" Case Size: **40:**17" x 6¹/₁₆"

RIXSON MODEL 50 SERIES FLOOR CLOSER

The Rixson model 50 series includes two different closers: **5013-14-15** (90° or 105° hold open/no hold open) & **5023-24-25** (90° or 105° hold open/no hold open).

Features:

- HANDED
- CENTER HUNG (**5023**) OR OFFSET HUNG (**5013**)
- SINGLE (**5013**) OR DOUBLE (**5023**) ACTING
- INTERIOR AND EXTERIOR USE
- SIZED SPRING

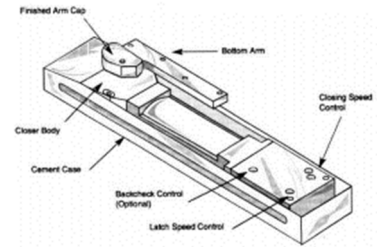
How to Identify: The model 50 series will be identifiable by the case size. Rixson floor closers are dark bronze in color. Case Size: 19¹/₈" x 4¹/₂"

RIXSON MODEL 51 SERIES FLOOR CLOSER

The Rixson model 51 series (5103-04-05) is available in 90°, 105°, or 180° hold open/no hold open.

Features:

- HANDED
- 3/4" OFFSET HUNG
- SINGLE ACTING
- INTERIOR AND EXTERIOR USE
- SIZED SPRING



How to Identify: The model 51 series will be identifiable by the case size. Rixson floor closers are dark bronze in color. Case Size: 19 1/8" x 4 1/2"

RIXSON MODEL 53 SERIES FLOOR CLOSER

The Rixson model 53 series (5303-04-05) is only available in no hold open.

Features:

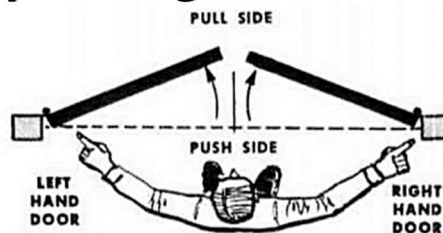
- HANDED
- INDEPENDENTLY HUNG
- SINGLE ACTING
- INTERIOR USE
- SIZED SPRING

How to Identify: The model 53 series will be identifiable by the case size. Rixson floor closers are dark bronze in color. Case Size: 19 1/8" x 4 1/2"

Surface Applied Closers

Corbin	_____	{21}
Corbin/Ruswin	_____	{22}
Dorma/TACO	_____	{23-24}
Ilco	_____	{25}
Kawneer/Mab	_____	{26}
LCN	_____	{27-29}
Lockwood	_____	{30}
Norton	_____	{31-33}
Rixson	_____	{34}
Ruswin	_____	{35}
Sargent	_____	{36-38}
Tubelite	_____	{39}
Yale	_____	{40-41}

Is my door right or left handed?



You can also stand with your back to the hinged jam.

If door swings to the left – it's a Left-Hand Door.

If door swings to the right – it's a Right-Hand Door.



CORBIN MODELS 2-6 SERIES SURFACE APPLIED

The Corbin models 2-6 series are no hold open, pot-belly traditional style, closers that includes five closers: **2, 3, 4, 5 & 6**.

Features:

- SINGLE ACTING
- EASY HAND REVERSING
- SINGLE VALVE SPEED ADJUSTMENT
- SIZED SPRING (2, 3, 4, 5 & 6)

How to Identify: The models 2-6 series will be identifiable by the mounting hold pattern and/or number on the end plug. The shaft shape is round with one straight side.

CORBIN MODELS 102-105 SERIES SURFACE APPLIED

The Corbin models 102-105 series are hold open, pot-belly traditional style, closers that includes four closers: **102, 103, 104 & 105**.

Features:

- SINGLE ACTING
- EASY HAND REVERSING
- SINGLE VALVE SPEED ADJUSTMENT
- SIZED SPRING (2, 3, 4 & 5)

How to Identify: The models 102-105 series will be identifiable by the mounting hold pattern and/or number on the end plug. The shaft shape is round with one straight side.

CORBIN MODEL 70 SERIES SURFACE APPLIED

The Corbin model 70 series is a pot-belly traditional style closer that includes four closers: **70-2, 70-3, 70-4 & 70-5**.

Features:

- SINGLE ACTING
- EASY HAND REVERSING
- DOUBLE VALVE SPEED ADJUSTMENT
- SIZED SPRING (2, 3, 4, & 5)



How to Identify: The model 70 series spring size will be identifiable by the number stamped on the case.

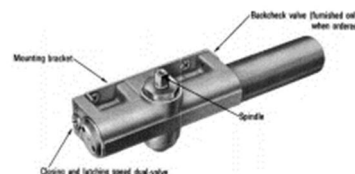
CORBIN RUSSWIN MODEL 100 SERIES SURFACE APPLIED

The Corbin Russwin model 100 series is a streamline style closer that includes four closers: **100-1, 100-2, 100-3, 100-4 & 100-5.**

Features:

- NON-HANDED
- SIZED SPRING (2, 3, 4 & 5)

How to Identify: The model 100 series spring size will be identifiable by the number stamped on the case. Overall length: 11"



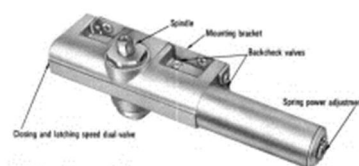
CORBIN RUSSWIN MODELS 110-120 SERIES SURFACE APPLIED

The Corbin Russwin models 110-120 series are streamline style closers that includes five closers: **110-2, 110-3, 110-4, 110-5 & 120.**

Features:

- NON-HANDED
- SIZED SPRING (2, 3, 4 & 5)
- ADJUSTABLE SPRING TENSION (**120**)

How to Identify: The models 110-120 series spring size will be identifiable by the number stamped on the case. Overall length: 11"



CORBIN RUSSWIN MODEL 400 SERIES SURFACE APPLIED

The Corbin Russwin model 400 series is available in either hold open or no hold open that includes three closers: **400-3, 400-4 & 400-5.**

Features:

- HANDED
- SINGLE ACTING
- SIZED SPRING (3, 4 & 5)

How to Identify: The model 400 series spring size will be identifiable by the number stamped on the case.



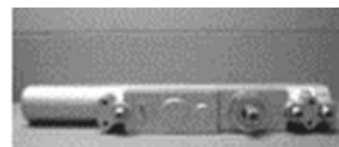
CORBIN RUSSWIN MODEL 500 SERIES SURFACE APPLIED

The Corbin Russwin model 500 series can be either surface applied, or concealed in door and includes three closers: **500-2, 500-3 & 500-4.**

Features:

- HANDED
- SINGLE ACTING
- SIZED SPRING (2, 3 & 4)

How to Identify: The model 500 series spring size will be identifiable by the number stamped on the case. The model 500-4 has a long tube, and both the 500-2 & 500-3 don't have a tube.



DORMA-TACO MODELS 3-5 SERIES SURFACE APPLIED

The Dorma-Taco models 3-5 series are pot-belly traditional style closers.

Features:

- EASY HAND REVERSING
- SINGLE ACTING
- SIZED SPRING (3, 4 & 5)

How to Identify: The models 3-5 series spring size will be identifiable by the number stamped on the end plug.

DORMA-TACO MODEL 40 SERIES SURFACE APPLIED

The Dorma-Taco model 40 series is a streamline style closer that includes three closers: **43, 44 & 45.**

Features:

- NON-HANDED
- SIZED SPRING (3, 4 & 5)

How to Identify: The model 40 series spring size will be identifiable by the number stamped on the end plug.



DORMA MODEL 610 SERIES SURFACE APPLIED

The Dorma model 610 series is a streamline style closer.

Features:

- NON-HANDED
- SIZED SPRING (2, 3, 4, 5 & 6)

How to Identify: The model 610 series spring size will be identifiable by the number stamped on the end of the closer (8¼" CTC).

DORMA MODEL 650 SERIES SURFACE APPLIED

The Dorma model 650 series is a streamline style closer that includes two closers: **650** and **651**.

Features:

- NON-HANDED
- ADJUSTABLE SPRING TENSION
 - **650:** SIZE 3-6
 - **651:** SIZE 1-4

How to Identify: The model 650 series spring size will be identifiable by the number stamped on the end of the closer.

DORMA MODEL 7600 SERIES SURFACE APPLIED

The Dorma model 7600 series is a streamline style closer.

Features:

- NON-HANDED
- SIZED AND ADJUSTABLE SPRING TENSION

How to Identify: The model 7600 series spring size will be identifiable by the number stamped on the end of the closer.

DORMA MODEL 7800 SERIES SURFACE APPLIED

The Dorma model 7800 series is a streamline style closer.

Features:

- NON-HANDED
- SIZED AND ADJUSTABLE SPRING TENSION

How to Identify: The model 7800 series spring size will be identifiable by the number stamped on the end of the closer.



ILCO MODEL 20 SERIES SURFACE APPLIED

The Ilco model 20 series is a pot-belly, traditional style closer that includes four closers: **22, 23, 24 & 25.**

Features:

- SINGLE ACTING
- EASY HAND REVERSING
- SIZED SPRING (3, 4 & 5)



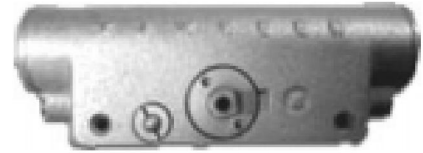
How to Identify: The model 20 series will be identifiable by the mounting hole pattern and/or number on the end of the plug. The shaft shape is a rectangle with rounded ends.

KAWNEER MODEL 200 SERIES SURFACE APPLIED

The Kawneer model 200 series is a streamline style which includes four different closers: **204NHO** (Size 4 spring, no hold open), **204HO** (Size 4 spring, hold open), **205NHO** (Size 5 spring, no hold open) & **205HO** (Size 5 spring, hold open).

Features:

- MOUNTING BRACKET
- SINGLE ACTING
- NON-HANDED
- SIZED SPRING



How to Identify: The model 200 series spring size will be identifiable by the number located on the end plug of the closer. Closers with a spring on the bottom of the closer will have hold open feature. If there isn't a spring, then it will be a no hold open closer.

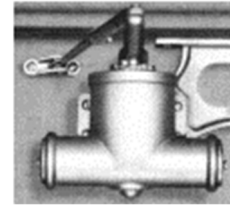
LCN TRADITIONAL SERIES SURFACE APPLIED

The LCN Traditional series is a pot-belly, traditional style closer that includes six closers: **A, B, C, D, E & F**.

Features:

- SINGLE ACTING
- EASY HAND REVERSING
- SIZED SPRING (A, B, C, D, E & F)

How to Identify: The Traditional series spring size will be identifiable by the letter located on the end plug of the closer.



LCN MODELS 1040-1050 SERIES SURFACE APPLIED

The LCN models 1040-1050 series are streamline style closers. The **1040** series includes three closers *without* backcheck: **1043, 1044 & 1045**; and the **1050** series includes three closers *with* backcheck: **1053, 1054 & 1055**.

Features:

- NON-HANDED
- SIZED SPRING (4 & 5)

How to Identify: The models 1040-1050 series spring size will be identifiable by the number stamped on the packing nut located at the shaft of the closer.



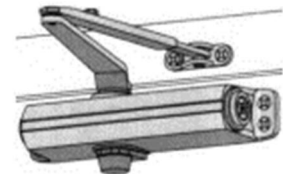
LCN MODEL 1070 SERIES SURFACE APPLIED

The LCN model 1070 series are streamline style closers that includes four closers: **1071, 1073, 1074 & 1075**.

Features:

- NON-HANDED
- SIZED SPRING (3, 4 & 5)
 - ADJUSTABLE SPRING TENSION (**1071**)

How to Identify: The model 1070 series spring size will be identifiable by the number stamped on the packing nut located at the shaft of the closer.



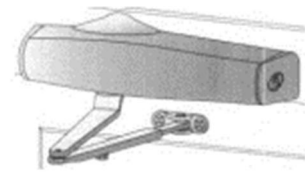
LCN MODEL 1371 SERIES SURFACE APPLIED

The LCN model 1371 series is a streamline style closer.

Features:

- NON-HANDED
- ADJUSTABLE SPRING TENSION (1-5)
- MOUNTING BRACKET INSTALLATION

How to Identify: The model 1371 series spring size will be identifiable by the number stamped on the packing nut located at the shaft of the closer.

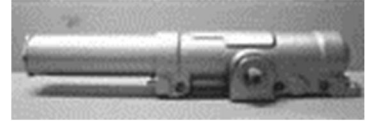


LCN MODELS 1460 & 1461 SURFACE APPLIED

The LCN models **1460 & 1461** are streamline style closers.

Features:

- NON-HANDED
- ADJUSTABLE SPRING TENSION
- PLASTIC COVER
- MOUNTING BRACKET INSTALLATION



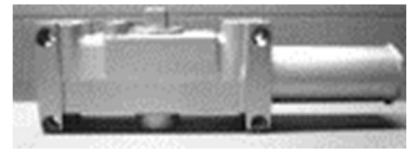
How to Identify: The models 1460-1461 series will be identifiable by the number stamped on the packing nut located at the shaft of the closer.

LCN MODEL 4010 SERIES SURFACE APPLIED

The LCN model 4010 series is a streamline style closer mounted on the hinge face of the door that includes six closers: **4011, 4012, 4013, 4014, 4015 & 4016**.

Features:

- HANDED
- SIZED SPRING (2, 3, 4, 5 & 6)
 - ADJUSTABLE SPRING TENSION (**4011**)
- PLASTIC COVER



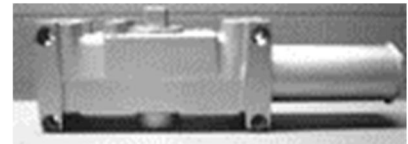
How to Identify: The model 4010 series will be identifiable by the number stamped on the packing nut located at the shaft of the closer. Identification numbers can also be found on stickers on the spring tube, or stamped on the spring tube.

LCN MODEL 4020 SERIES SURFACE APPLIED

The LCN model 4020 series is a streamline style closer mounted on the top jam of the door that includes six closers: **4021, 4022, 4023, 4024, 4025 & 4026**.

Features:

- HANDED
- SIZED SPRING (2, 3, 4, 5 & 6)
 - ADJUSTABLE SPRING TENSION (**4021**)
- PLASTIC COVER



How to Identify: The model 4020 series will be identifiable by the number stamped on the packing nut located at the shaft of the closer. Identification numbers can also be found on stickers on the spring tube, or stamped on the spring tube.

LCN MODEL 4110 SERIES SURFACE APPLIED

The LCN model 4110 series is a streamline style closer that is parallel mounted and includes six closers: **4111, 4112, 4113, 4114, 4115 & 4116**.

Features:

- HANDED
- SIZED SPRING (2, 3, 4, 5 & 6)
 - ADJUSTABLE SPRING TENSION (**4111**)
- PLASTIC COVER



How to Identify: The model 4110 series will be identifiable by the number stamped on the packing nut located at the shaft of the closer. Identification numbers can also be found on stickers on the spring tube, or stamped on the spring tube.

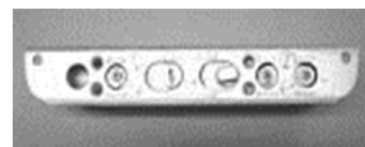
LCN MODELS 4030 & 4130 SERIES SURFACE APPLIED

The LCN models 4030 & 4130 series are streamline style closers. Model 4030 series is mounted on the hinge face of the door, and includes three closers: **4032, 4033 & 4034**.

Model 4130 series is parallel mounted, and includes three closers: **4132, 4133 & 4134**.

Features:

- HANDED
- SIZED SPRING (2, 3 & 4)
- PLASTIC COVER



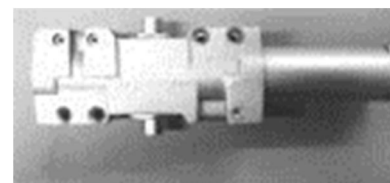
How to Identify: The models 4030 & 4130 series will be identifiable by the number stamped on the packing nut located at the shaft of the closer.

LCN MODELS 4040 & 4041 SERIES SURFACE APPLIED

The LCN models 4040 & 4041 series are streamline style closers. Model **4040** series is the old style, and model **4041** is the new style.

Features:

- NON-HANDED
- SIZED SPRING (1, 2, 3, 4, 5 & 6)
- PLASTIC COVER



How to Identify: The models 4040 & 4041 series will be identifiable by the number stamped on the packing nut located at the shaft of the closer. Identification numbers can also be found on stickers on the spring tube, or stamped on the spring tube.



LOCKWOOD TRADITIONAL SERIES SURFACE APPLIED

The Lockwood Traditional series is a pot-belly, traditional style closer.

Features:

- SINGLE ACTING
- SIZED SPRING (B, C, D & E)
- EASY HAND REVERSING

How to Identify: The traditional series spring size will be identifiable by the letter stamped on the end plug.





NORTON TRADITIONAL SERIES SURFACE APPLIED

The Norton Traditional series is a pot-belly, traditional style closer.

Features:

- SINGLE ACTING
- SIZED SPRING (B, C, D, E & F)
- EASY HAND REVERSING
- OLD AND NEW STYLE



How to Identify: The traditional series spring size will be identifiable by the letter stamped on the end plug. The old style has a rectangular shaft, while the new style has a square shaft with a shaft height of $\frac{1}{4}$ " or $\frac{1}{2}$ ".

NORTON TRADITIONAL 78 SERIES SURFACE APPLIED

The Norton Traditional 78 series is a pot-belly, traditional style closer.

Features:

- SINGLE ACTING
- SIZED SPRING (B/D & E / F)
- EASY HAND REVERSING



How to Identify: The traditional 78 series spring size will be identifiable by the letter stamped near the mounting holes.

NORTON MODEL 1500 SERIES SURFACE APPLIED

The Norton model 1500 series is a streamline style closer that includes three closers: **1503, 1504 & 1505.**

Features:

- NON-HANDED
- SIZED SPRING (3, 4 & 5)

How to Identify: The model 1500 series spring size will be identifiable by the number stamped on the end of the closer.

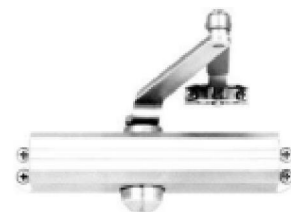


NORTON MODEL 1600 SERIES SURFACE APPLIED

The Norton model 1600 series is a streamline style closer that includes seven closers: **1601, 1601BF, 1602, 1603, 1604, 1605 & 1606.**

Features:

- NON-HANDED
- SIZED SPRING (2, 3, 4, 5 & 6)
- ADJUSTABLE SPRING TENSION (1-4 **1601BF**) (3-6 **1601**)
- OLD AND NEW STYLE



How to Identify: The model 1600 series spring size will be identifiable by the number stamped on the end of the closer. The old style has a single valve speed adjustment, and the new style has a dual valve speed adjustment.

NORTON MODEL 7500 SERIES SURFACE APPLIED

The Norton Model 7500 series is a streamline style closer that includes two closers: **7500BF & 7500.**

Features:

- ADJUSTABLE SPRING TENSION (B / F) (2-6)
- NON-HANDED



How to Identify: The model 7500 series spring size will be identifiable by the letter stamped on the end of the closer.

NORTON MODEL 7700 SERIES SURFACE APPLIED

The Norton Model 7700 series is a streamline style closer that includes four closers: **7703, 7704, 7705 & 7706.**

Features:

- SIZED SPRING (3, 4, 5 & 6)
- NON-HANDED



How to Identify: The model 7700 series spring size will be identifiable by the letter stamped on the end of the closer.

NORTON MODEL L/R 750 SERIES SURFACE APPLIED

The Norton Model L/R 750 series is a corner mounted closer.

Features:

- HANDED

How to Identify: The model L/R 750 series spring size will be identifiable by the letter stamped on the end of the closer.





NORTON MODEL 8000 SERIES SURFACE APPLIED

The Norton Model 8000 series is a streamline style closer that includes four closers: **8003, 8004, 8005 & 8006.**

Features:

- SIZED SPRING (3, 4, 5 & 6)
- NON-HANDED
- BACKCHECK AVAILABLE



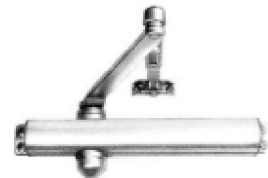
How to Identify: The model 8000 series spring size will be identifiable by the letter stamped on the end of the closer.

NORTON MODEL 8100 SERIES SURFACE APPLIED

The Norton Model 8100 series is a streamline style closer that includes two closers: **8100BF & 8100.**

Features:

- ADJUSTABLE SPRING TENSION (B/F) (2- 6)
- NON-HANDED
- BACKCHECK



How to Identify: The model 8100 series spring size will be identifiable by the letter stamped on the end of the closer.

NORTON MODEL L/R 700 SERIES SURFACE APPLIED

The Norton Model L/R 700 series is a streamline style closer that includes five closers: **702, 703, 704, 705 & 706.**

Features:

- SIZED SPRING (2, 3, 4, 5 & 6)
- HANDED
- OLD AND NEW STYLE



How to Identify: The model L/R 700 series spring size will be identifiable by the letter stamped on the top-end of the closer. The old style has a double “D” shaft, and the new style has a square shaft.

RIXSON MODEL M2020 SERIES SURFACE APPLIED

The Rixson Model M2020 series is a streamline style closer with a cast iron closer body.

Features:

- ADJUSTABLE SPRING TENSION (2- 6)
- NON-HANDED
- OLD AND NEW STYLE

How to Identify: The model M2020 series old style has a notched square shaft, and the new style has a square shaft.

RIXSON MODEL M2220 SERIES SURFACE APPLIED

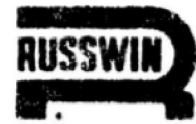
The Rixson Model M2220 series is a streamline style closer with an aluminum closer body.

Features:

- ADJUSTABLE SPRING TENSION (2- 6)
- NON-HANDED



How to Identify: The model M2220 series old style has a notched square shaft, and the new style has a square shaft.



RUSSWIN TRADITIONAL SERIES SURFACE APPLIED

The Russwin Traditional series is a pot-belly traditional style closer that includes four closers: **B, C, D & E**.

Features:

- SINGLE ACTING
- EASY HAND REVERSING
- SIZED SPRING (B, C, D & E)



How to Identify: The Traditional series will be identifiable by the letter stamped on the end plug.

RUSSWIN TRADITIONAL “MOD” SERIES SURFACE APPLIED

The Russwin Traditional “Mod” series is a pot-belly traditional style closer.

Features:

- SINGLE ACTING
- EASY HAND REVERSING



How to Identify: The Traditional “Mod” series will be identifiable by the series of numbers and letters stamped on the bottom of the closer.

RUSSWIN MODEL 90 SERIES SURFACE APPLIED

The Russwin Model 90 series is a streamline style closer that includes four closers: **92, 93, 94 & 95**.

Features:

- NON-HANDED
- SIZED SPRING (2, 3, 4 & 5)

How to Identify: The Model 90 series will be identifiable by the series of numbers and letters stamped on the bottom of the closer.

SARGENT TRADITIONAL SERIES SURFACE APPLIED CLOSER

The Sargent Traditional series is a pot-belly style closer that includes four models: **C; D; E & V.**

Features:

- EASY HAND REVERSING
- SINGLE ACTING
- SIZED SPRING (42, 43, 44 & 45)



How to Identify: The Traditional series will be identifiable by the numbers and letters stamped on the top of the closer.

SARGENT MODEL 50 SERIES SURFACE APPLIED

The Sargent Model 50 series is a streamline style closer that includes five closers: **52, 53, 54, 55 & 56.**

Features:

- HANDED
- SIZED SPRING (2, 3, 4, 5 & 6)
- SINGLE BARREL SPRING TUBE

How to Identify: The Model 50 series spring size will be identifiable by the number stamped on the fill plug of the closer.

SARGENT MODEL 70 SERIES SURFACE APPLIED

The Sargent Model 70 series is a streamline style closer that includes three closers: **73, 74 & 75.**

Features:

- HANDED
- SIZED SPRING (3, 4 & 5)
- DOUBLE BARREL SPRING TUBE

How to Identify: The Model 70 series spring size will be identifiable by the number stamped on the fill plug of the closer.

SARGENT MODEL 150 SERIES SURFACE APPLIED

The Sargent Model 150 series is a streamline style closer that includes five closers: **152, 153, 154, 155 & 156.**

Features:

- HANDED
- SIZED SPRING (2, 3, 4, 5 & 6)
- SINGLE BARREL SPRING TUBE
- BACKCHECK ADJUSTMENT

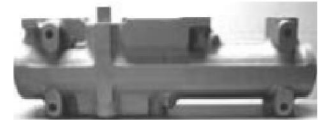
How to Identify: The Model 150 series spring size will be identifiable by the number stamped on the fill plug of the closer.

SARGENT MODEL 250 SERIES SURFACE APPLIED

The Sargent Model 250 series is a streamline style closer that includes two closers: **250L & 250R.**

Features:

- HANDED
- ADJUSTABLE SPRING TENSION



How to Identify: The Model 250 series spring size will be identifiable by the number stamped on the fill plug of the closer.

SARGENT MODEL 1220 SERIES SURFACE APPLIED

The Sargent Model 1220 series is a streamline style closer that includes four closers: **1223, 1224, 1225 & 1226.**

Features:

- NON-HANDED
- SIZED SPRING (3, 4, 5 & 6)

How to Identify: The Model 1220 series spring size will be identifiable by the number stamped on the end plug of the closer.

SARGENT MODEL 1230 SERIES SURFACE APPLIED

The Sargent Model 1230 series is a streamline style closer.

Features:

- NON-HANDED
- ADJUSTABLE SPRING TENSION (3- 5)



How to Identify: The Model 1230 series spring size will be identifiable by the number stamped on the end plug of the closer.

SARGENT MODEL 1240 SERIES SURFACE APPLIED

The Sargent Model 1240 series is a streamline style closer that includes four closers: **1243, 1244, 1245 & 1246.**

Features:

- NON-HANDED
- SIZED SPRING (3, 4, 5 & 6)

How to Identify: The Model 1240 series spring size will be identifiable by the number stamped on the end plug of the closer.

SARGENT MODEL 1250 SERIES SURFACE APPLIED

The Sargent Model 1250 series is a streamline style closer.

Features:

- NON-HANDED
- ADJUSTABLE SPRING TENSION (2-6)



How to Identify: The Model 1250 series spring size will be identifiable by the number stamped on the end plug of the closer.

TUBELITE MODEL 200 SERIES SURFACE APPLIED

The Tubelite Model 200 series is a streamline style closer.

Features:

- NON-HANDED
- AVAILABLE WITH OR WITHOUT BACKCHECK
- OLD AND NEW STYLE



How to Identify: The Model 200 series will be identifiable by the mounting hole dimensions & the number of speed adjustments.



YALE MODEL 40 SERIES SURFACE APPLIED

The Yale Model 40 series is a surface applied closer that includes three closers: **42, 43 & 45.**

Features:

- HANDED
- BACKCHECK ADJUSTMENT
- SIZED SPRING (2, 3 & 5)

How to Identify: The Model 40 series spring size will be identifiable by the numbers stamped on the cover bracket of the closer and has a concealed spring tube.

YALE MODEL 50 SERIES SURFACE APPLIED

The Yale Model 50 series is a surface applied closer that includes four closers: **52, 53, 54 & 55.**

Features:

- NON-HANDED
- BACKCHECK ADJUSTMENT
- SIZED SPRING (2, 3, 4 & 5)
- OLD AND NEW STYLE

How to Identify: The Model 50 series spring size will be identifiable by the numbers stamped on the end of the closer. The Old Style has 1 valve speed adjustment, and the New Style has 2 valve speed adjustments.

YALE MODEL 60 SERIES SURFACE APPLIED

The Yale Model 60 series is a concealed 'in-a-door' closer that includes four closers: **62, 63, 64 & 65.**

Features:

- HANDED
- BACKCHECK ADJUSTMENT
- SIZED SPRING (2, 3, 4 & 5)

How to Identify: The Model 60 series spring size will be identifiable by the numbers stamped on the cover bracket of the closer and has a visible spring tube.



YALE TRADITIONAL 70 SERIES SURFACE APPLIED

The Yale Traditional 70 series is a pot-belly traditional style closer that includes five closers: **71, 72, 73, 74 & 75.**

Features:

- SINGLE ACTING
- EASY HAND REVERSING
- SIZED SPRING (1, 2, 3, 4 & 5)
- OLD AND NEW STYLE



How to Identify: The Traditional 70 series will be identifiable by the numbers and letters stamped on the end plug of the closer. **Old Style:** Double 'd' Shaft, Pie-shaped shaft | **New Style:** Square shaft – ½" and ¼" height.

YALE MODEL 80 SERIES SURFACE APPLIED

The Yale Model 80 series is a streamline surface applied closer that includes five closers: **82, 83, 84, 85 & 86.**

Features:

- NON-HANDED
- BACKCHECK ADJUSTMENT
- SIZED SPRING (2, 3, 4, 5 & 6)

How to Identify: The Model 80 series spring size will be identifiable by the numbers stamped on the end of the closer.

YALE TRADITIONAL 90 SERIES SURFACE APPLIED

The Yale Traditional 90 series is a pot-belly traditional style closer that includes four closers: **92, 93, 94 & 95.**

Features:

- SINGLE ACTING
- EASY HAND REVERSING
- SIZED SPRING (2, 3, 4 & 5)

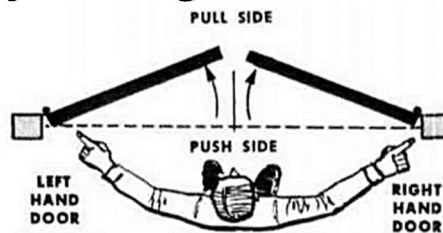


How to Identify: The Traditional 90 series will be identifiable by the numbers and letters stamped on the top of the closer.

Overhead Concealed Closers

Dorma	_____	{43}
Dor-O-Matic	_____	{44-48}
Jackson	_____	{49}
Kawneer	_____	{50-51}
LCN	_____	{52-54}
MAB	_____	{55}
Norton	_____	{56}
R&K	_____	{57}
Rixson	_____	{58}

Is my door right or left handed?



You can also stand with your back to the hinged jam.

If door swings to the left – it's a Left-Hand Door.

If door swings to the right – it's a Right-Hand Door.



DORMA MODEL RTS 76 SERIES OVERHEAD CONCEALED

The Dorma Model RTS 76 series has a size 3 spring tension.

Features:

- NON-HANDED
- NO-HOLD OPEN AND HOLD OPEN (90° & 105°)

How to Identify: The Model RTS 76 series will be identifiable by the number stamped on the body of the closer and has a diamond shaped shaft.

DORMA MODEL RTS 85 SERIES OVERHEAD CONCEALED

The Dorma Model RTS 85 series has a size 3 spring tension.

Features:

- NON-HANDED
- NO-HOLD OPEN AND HOLD OPEN (90° & 105°)



How to Identify: The Model RTS 85 series will be identifiable by the number stamped on the body of the closer and has a square shaft.

DORMA MODEL RTS 88 SERIES OVERHEAD CONCEALED

The Dorma Model RTS 88 series has a size 3 spring tension.

Features:

- NON-HANDED
- NO-HOLD OPEN AND HOLD OPEN (90° & 105°)

How to Identify: The Model RTS 88 series will be identifiable by the number stamped on the body of the closer and has a square shaft.

DOR-O-MATIC MODEL 1200 “HEADLINER” SERIES OVERHEAD CONCEALED

The Dorma Model 1200 “Headliner” series includes four closers: **1200** (105° hold open), **1201** (105° no-hold open), **1202** (90° hold open) & **1203** (90° no-hold open).

Features:

- NON-HANDED
- CENTER HUNG
- INTERIOR DOOR USE (LIGHT DUTY)
- DOUBLE ACTING

How to Identify: The Model 1200 “Headliner” series will be easily identifiable by markings on the top of the closer at the opposite end of the spindle and has a square shaft.

DOR-O-MATIC MODEL 12000 “HEADLINER” SERIES OVERHEAD CONCEALED

The Dorma Model 12000 “Headliner” series includes four closers: **12000** (105° hold open), **12010** (105° no-hold open), **12020** (90° hold open) & **12030** (90° no-hold open).

Features:

- NON-HANDED
- CENTER HUNG
- INTERIOR DOOR USE (LIGHT DUTY)
- DOUBLE ACTING



How to Identify: The Model 12000 “Headliner” series will be easily identifiable by markings on the top of the closer at the opposite end of the spindle and has a square shaft.

DOR-O-MATIC MODEL 1300 “HEADLINER” SERIES OVERHEAD CONCEALED

The Dorma Model 1300 “Headliner” series includes four closers: **1300** (105° hold open), **1301** (105° no-hold open), **1302** (90° hold open) & **1303** (90° no-hold open).

Features:

- NON-HANDED
- CENTER HUNG
- EXTERIOR AND INTERIOR DOOR USE (MEDIUM DUTY)
- DOUBLE ACTING

How to Identify: The Model 1300 “Headliner” series will be easily identifiable by markings on the top of the closer at the opposite end of the spindle and has a square shaft.

DOR-O-MATIC MODEL 13000 “HEADLINER” SERIES OVERHEAD CONCEALED

The Dorma Model 13000 “Headliner” series includes four closers: **13000** (105° hold open), **13010** (105° no-hold open), **13020** (90° hold open) & **13030** (90° no-hold open).

Features:

- NON-HANDED
- CENTER HUNG
- EXTERIOR AND INTERIOR DOOR USE (MEDIUM DUTY)
- DOUBLE ACTING



How to Identify: The Model 13000 “Headliner” series will be easily identifiable by markings on the top of the closer at the opposite end of the spindle and has a square shaft.

DOR-O-MATIC MODEL 1400 “HEADLINER” SERIES OVERHEAD CONCEALED

The Dorma Model 1400 “Headliner” series includes four closers: **1400** (105° hold open), **1401** (105° no-hold open), **1402** (90° hold open) & **1403** (90° no-hold open).

Features:

- NON-HANDED
- CENTER HUNG
- INTERIOR AND EXTERIOR DOOR USE (HEAVY DUTY)
- DOUBLE ACTING

How to Identify: The Model 1400 “Headliner” series will be easily identifiable by markings on the top of the closer at the opposite end of the spindle and has a square shaft.

DOR-O-MATIC MODEL 14000 “HEADLINER” SERIES OVERHEAD CONCEALED

The Dorma Model 14000 “Headliner” series includes four closers: **14000** (105° hold open), **14010** (105° no-hold open), **14020** (90° hold open) & **14030** (90° no-hold open).

Features:

- NON-HANDED
- CENTER HUNG
- INTERIOR AND EXTERIOR DOOR USE (HEAVY DUTY)
- DOUBLE ACTING



How to Identify: The Model 14000 “Headliner” series will be easily identifiable by markings on the top of the closer at the opposite end of the spindle and has a square shaft.

DOR-O-MATIC MODEL 2200 “HEADLINER” SERIES OVERHEAD CONCEALED

The Dorma Model 2200 “Headliner” series includes four closers: **2200** (105° hold open), **2201** (105° no-hold open), **2202** (90° hold open) & **2203** (90° no-hold open).

Features:

- NON-HANDED
- CENTER HUNG
- INTERIOR DOOR USE (LIGHT DUTY)
- DOUBLE ACTING

How to Identify: The Model 2200 “Headliner” series will be easily identifiable by markings on the top of the closer at the opposite end of the spindle and has a 4-prong shaft.

DOR-O-MATIC MODEL 2250 “HEADLINER” SERIES OVERHEAD CONCEALED

The Dorma Model 2250 “Headliner” series includes four closers: **2250** (105° hold open), **2251** (105° no-hold open), **2252** (90° hold open) & **2253** (90° no-hold open).

Features:

- NON-HANDED
- CENTER HUNG
- INTERIOR DOOR USE (LIGHT DUTY)
- DOUBLE ACTING

How to Identify: The Model 2250 “Headliner” series will be easily identifiable by markings on the top of the closer at the opposite end of the spindle and has a 4-prong shaft.

DOR-O-MATIC MODEL 2300 “HEADLINER” SERIES OVERHEAD CONCEALED

The Dorma Model 2300 “Headliner” series includes four closers: **2300** (105° hold open), **2301** (105° no-hold open), **2302** (90° hold open) & **2303** (90° no-hold open).

Features:

- NON-HANDED
- CENTER HUNG
- EXTERIOR AND INTERIOR DOOR USE (MEDIUM DUTY)
- DOUBLE ACTING



How to Identify: The Model 2300 “Headliner” series will be easily identifiable by markings on the top of the closer at the opposite end of the spindle and has a 4-prong shaft.

DOR-O-MATIC MODEL 2350 “HEADLINER” SERIES OVERHEAD CONCEALED

The Dorma Model 2350 “Headliner” series includes four closers: **2350** (105° hold open), **2351** (105° no-hold open), **2352** (90° hold open) & **2353** (90° no-hold open).

Features:

- NON-HANDED
- CENTER HUNG
- EXTERIOR AND INTERIOR DOOR USE (MEDIUM DUTY)
- DOUBLE ACTING

How to Identify: The Model 2350 “Headliner” series will be easily identifiable by markings on the top of the closer at the opposite end of the spindle and has a 4-prong shaft.

DOR-O-MATIC MODEL 22000 “HEADLINER” SERIES OVERHEAD CONCEALED

The Dorma Model 22000 “Headliner” series includes four closers: **22000** (105° hold open), **22010** (105° no-hold open), **22020** (90° hold open) & **22030** (90° no-hold open).

Features:

- NON-HANDED
- CENTER HUNG
- INTERIOR DOOR USE (LIGHT DUTY)
- DOUBLE ACTING



How to Identify: The Model 22000 “Headliner” series will be easily identifiable by markings on the top of the closer at the opposite end of the spindle and has a rectangular shaft.

DOR-O-MATIC MODEL 22500 “HEADLINER” SERIES OVERHEAD CONCEALED

The Dorma Model 22500 “Headliner” series includes four closers: **22500** (105° hold open), **22510** (105° no-hold open), **22520** (90° hold open) & **22530** (90° no-hold open).

Features:

- NON-HANDED
- CENTER HUNG
- INTERIOR DOOR USE (LIGHT DUTY)
- DOUBLE ACTING

How to Identify: The Model 22500 “Headliner” series will be easily identifiable by markings on the top of the closer at the opposite end of the spindle and has a rectangular shaft.

DOR-O-MATIC MODEL 23000 “HEADLINER” SERIES OVERHEAD CONCEALED

The Dorma Model 23000 “Headliner” series includes four closers: **23000** (105° hold open), **23010** (105° no-hold open), **23020** (90° hold open) & **23030** (90° no-hold open).

Features:

- NON-HANDED
- CENTER HUNG
- EXTERIOR AND INTERIOR DOOR USE (MEDIUM DUTY)
- DOUBLE ACTING

How to Identify: The Model 23000 “Headliner” series will be easily identifiable by markings on the top of the closer at the opposite end of the spindle and has a rectangular shaft.

DOR-O-MATIC MODEL 23500 “HEADLINER” SERIES OVERHEAD CONCEALED

The Dorma Model 23500 “Headliner” series includes four closers: **23500** (105° hold open), **23510** (105° no-hold open), **23520** (90° hold open) & **23530** (90° no-hold open).

Features:

- NON-HANDED
- CENTER HUNG
- EXTERIOR AND INTERIOR DOOR USE (MEDIUM DUTY)
- DOUBLE ACTING



How to Identify: The Model 23500 “Headliner” series will be easily identifiable by markings on the top of the closer at the opposite end of the spindle and has a rectangular shaft.

JACKSON MODEL 20-330 SERIES OVERHEAD CONCEALED

The Jackson Model 20-330 series includes is available in **light**, **regular**, or **heavy** duty.

Features:

- NON-HANDED
- DOUBLE ACTING
- EXTERIOR AND INTERIOR DOOR USE
- NO-HOLD OPEN OR HOLD OPEN (90° OR 105°)
- SINGLE OR DUAL VALVE



How to Identify: The Model 20-330 series function will be easily identifiable by markings on the top of the spindle. The spring size (duty) will be determined by the size of the door.

KAWNEER MODEL M-2 SERIES OVERHEAD CONCEALED

The Kawneer Model M-2 series includes 15 different closers. Please see table below

Features:

- NON-HANDED
- DOUBLE ACTING
- EXTERIOR AND INTERIOR DOOR USE
- NO-HOLD OPEN OR HOLD OPEN (90° OR 105°)



Door Width	24"	24"	30"	30"	36"	36"	42"	42"	48"	48"
Pivot Location	Center	Offset	Center	Offset	Center	Offset	Center	Offset	Center	Offset
No Hold Open	37-621	37-621	37-624	37-621	37-627	37-624	37-630	37-627	37-633	37-630
90° Hold Open	37-622	37-623	37-625	37-623	37-628	37-626	37-631	37-629	37-634	37-632
105° Hold Open	37-623	N/A	37-626	N/A	37-629	N/A	37-632	N/A	37-635	N/A

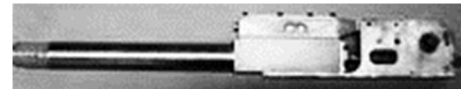
How to Identify: The Model M-2 series function will be identified by stamped numbers, or sticker, on the closer body. The spring size will be determined by the size of the door. The M-2 will have an exposed oil reservoir near the spring tube.

KAWNEER MODEL M-3 "HUSKY" SERIES OVERHEAD CONCEALED

The Kawneer Model M-3 series includes 13 different closers. Please see table below.

Features:

- NON-HANDED
- DOUBLE ACTING
- EXTERIOR AND INTERIOR DOOR USE
- NO-HOLD OPEN OR HOLD OPEN (90° OR 105°)



Door Width	30"	30"	36"	36"	42"	42"	48"	48"
Pivot Location	Center	Offset	Center	Offset	Center	Offset	Center	Offset
No Hold Open	624M3	621M3	627M3	624M3	630M3	627M3	633M3	630M3
90° Hold Open	625M3	623M3	628M3	626M3	631M3	629M3	634M3	632M3
105° Hold Open	626M3	N/A	629M3	N/A	632M3	N/A	635M3	N/A

How to Identify: The Model M-3 "Husky" series function will be identified by stamped numbers, or sticker, on the closer body. The spring size will be determined by the size of the door.

KAWNEER MODEL "HUSKY II" SERIES OVERHEAD CONCEALED

The Kawneer Model "Husky II" series includes 15 different closers. Please see table below.

Features:

- NON-HANDED
- DOUBLE ACTING
- EXTERIOR AND INTERIOR DOOR USE
- NO-HOLD OPEN OR HOLD OPEN (90° OR 105°)



Door Width	24"	30"	36"	42"	48"
No Hold Open	50-621	50-624	50-627	50-630	50-633
90° Hold Open	50-622	50-625	50-628	50-631	50-634
105° Hold Open	50-623	50-626	50-629	50-632	50-634

How to Identify: The Model "Husky II" series function will be identified by stamped numbers on the closer spindle. The spring size will be determined by the size of the door.

LCN MODEL 200 SERIES OVERHEAD CONCEALED

The LCN Model 200 series is an overhead concealed closer that includes three closers: **204, 205 & 206.**

Features:

- HANDED
- SIZED SPRING (4, 5 & 6)

How to Identify: The model 200 series will be identifiable by the markings on the closer.

LCN MODEL 300 SERIES OVERHEAD CONCEALED

The LCN Model 300 series is an overhead concealed closer with an old-style shaft that includes three closers: **302, 303 & 304.**

Features:

- HANDED
- SIZED SPRING (2, 3 & 4)
- INTERIOR AND EXTERIOR USE
- 2-VALVE SPEED ADJUSTMENT

How to Identify: The model 300 series will be easily identifiable by markings on the closer bracket and/or packing nut at the spindle. Old style shaft is a Double 'D' shape with a horizontal arm mount.

LCN MODEL 330 SERIES OVERHEAD CONCEALED

The LCN Model 330 series is an overhead concealed closer with a new-style shaft that includes three closers: **332, 333 & 334.**

Features:

- HANDED
- SIZED SPRING (2, 3 & 4)
- INTERIOR AND EXTERIOR USE
- 3-VALVE SPEED ADJUSTMENT



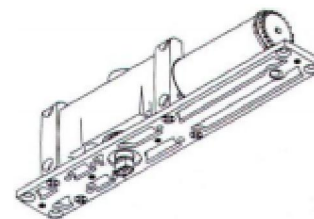
How to Identify: The model 330 series will be easily identifiable by markings on the closer bracket and/or packing nut at the spindle. New style shaft is a Double 'D' shape with a vertical arm mount.

LCN MODEL 2010 SERIES OVERHEAD CONCEALED

The LCN Model 2010 series is a track closer that includes five closers: **2011, 2013, 2014, 2015 & 2016.**

Features:

- HANDED
- SIZED SPRING (**2013-2016**)
- ADJUSTABLE SPRING TENSION (**2011**)
- INTERIOR AND EXTERIOR USE
- 3-VALVE SPEED ADJUSTMENT



How to Identify: The Model 2010 series model-number will be easily identifiable by markings on the packing nut at the spindle, or on the spring tube.

LCN MODEL 2030 SERIES OVERHEAD CONCEALED

The LCN Model 2030 series is a track closer that includes four closers: **2033, 2034, 2035 & 2036.**

Features:

- HANDED
- SIZED SPRING (3, 4, 5 & 6)
- INTERIOR AND EXTERIOR USE
- 3-VALVE SPEED ADJUSTMENT



How to Identify: The Model 2030 series spring size will be easily identifiable by markings on the closer body and has a short Double 'D' shaft.

LCN MODEL 3130 SERIES OVERHEAD CONCEALED

The LCN Model 3130 series is a track closer with a new-style shaft that includes three closers: **3132, 3133 & 3134.**

Features:

- HANDED
- SIZED SPRING (2, 3 & 4)
- INTERIOR AND EXTERIOR USE
- 3-VALVE SPEED ADJUSTMENT



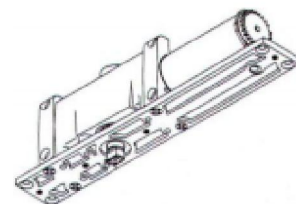
How to Identify: The Model 3130 series model-number will be easily identifiable by markings on the closer bracket and/or packing nut at the spindle. New style shaft: Double 'D' shaft with vertical arm mount.

LCN MODEL 5010 SERIES OVERHEAD CONCEALED

The LCN Model 5010 series includes four closers: **5013, 5014, 5015 & 5016.**

Features:

- HANDED
- SIZED SPRING (3, 4, 5 & 6)
- INTERIOR AND EXTERIOR USE
- 3-VALVE SPEED ADJUSTMENT



How to Identify: The Model 5010 series model-number will be easily identifiable by markings on the packing nut at the spindle or on the spring tube.

LCN MODEL 5030 SERIES OVERHEAD CONCEALED

The LCN Model 5030 series includes four closers: **5033, 5034, 5035 & 5036.**

Features:

- HANDED
- SIZED SPRING (3, 4, 5 & 6)
- INTERIOR AND EXTERIOR USE
- 3-VALVE SPEED ADJUSTMENT



How to Identify: The Model 5030 series spring size will be easily identifiable by markings on the closer body and has a 2" Double 'D' shaft.



MAB MODEL 5300 SERIES OVERHEAD CONCEALED

The MAB Model 5300 series is an overhead concealed closer that includes three closers: **5300, 5301 & 5302.**

Features:

- NON-HANDED
- DOUBLE ACTING
- NO HOLD OPEN OR HOLD OPEN (90° OR 105°)
- INTERIOR AND EXTERIOR USE

How to Identify: The Model 5300 series model-number will be identified by stamped numbers on the side of the closer body and has a diamond shaped shaft.



MAB MODEL 5600 SERIES OVERHEAD CONCEALED

The MAB Model 5600 series is an overhead concealed closer available in either **light, medium, or heavy duty** spring sizes.

Features:

- NON-HANDED
- DOUBLE ACTING
- NO HOLD OPEN OR HOLD OPEN (90° OR 105°)
- INTERIOR AND EXTERIOR USE

How to Identify: The Model 5600 series model-number will be identified by stamped numbers on the end plug of the closer body and has a square shaft.





NORTON MODEL L/R900 SERIES OVERHEAD CONCEALED

The Norton Model L/R900 series is an overhead concealed closer that is available in **old** and **new style** that includes three closers: **903, 904 & 905**.

Features:

- HANDED
- SIZED SPRING (3, 4 & 5)

How to Identify: The Model L/7900 series spring size will be identifiable by the number stamped on the case of the closer. **Old Style:** Double 'D' shaft. **New Style:** Square shaft.

NORTON MODEL 7900 SERIES OVERHEAD CONCEALED

The Norton Model 7900 series is an overhead concealed that includes three closers: **7904, 7905 & 7906**.

Features:

- HANDED
- SIZED SPRING (4, 5 & 6)



How to Identify: The Model 7900 series spring size will be identifiable by the number stamped on the end of the closer.



R&K MODEL C-90 SERIES OVERHEAD CONCEALED

The R&K Model C-90 series is an overhead concealed closer that has either a **side-load arm (C90E)** application or an **end-load arm (C90S)** application.

Features:

- NON-HANDED
- NO HOLD OPEN OR SELECTIVE HOLD OPEN



How to Identify: The Model C-90 series will be blue in color and have two visible springs. **Side-Load Application:** Diamond shaped shaft. **End Load Application:** Square shaft.