

MOOG
VIDEOLARM



MR7T

Recessed Ceiling Mount Dome

Moog Videolarm's MR7 is a low-profile, indoor, recessed, ceiling mount dome housing. It features a 7" (177.8mm) dome that accommodates standard-body fixed cameras up to 8" (203.2mm) in length or PTZ cameras (see compatibility chart). For fixed models, an opaque liner hides the direction of the camera in both the clear and tinted domes. The upper body is made of steel, and a white powder coat trim ring gives the MR7 a clean, streamlined look.

Key Features

- 7" (177.8mm) dome for easy installation and servicing from below the ceiling
- Housing extends only 3.5" (88.9mm) below ceiling
- Camera can be mounted on either side of the fixed mount camera bracket
- Includes a decorative trim ring with quick-release pressure springs
- Plenum rated for non-fire resistant ceilings
- Units available with either clear or tinted domes

FIXED

- Accepts standard body fixed camera and lens [up to 8" (203.2mm) in length]
- Includes black liner with pre-cut viewing window

PTZ

- Accepts many network PTZ cameras, see chart

UL File Number: E106941 & E306312



FIXED: MR7TL

7" (177.8mm) recessed ceiling mount dome housing, tinted dome, plus (1) fixed camera bracket, and decorative trim ring, includes liner; MCL 8" (Maximum Camera Length 203.2mm)

IP Network PTZ: MR7TN

IP network ready 7" (177.8mm) recessed ceiling mount dome housing, tinted dome, for an IP network PTZ camera, includes trim ring

Tinted and Clear domes available specify
"C" for Clear or "T" for Tinted



COMPATIBLE CAMERAS:

To view the latest listing of compatible cameras please visit www.videolarm.com/thirdparty.jsp

PTZ:



ACM-8201/8211, ACM-8511, CAM-6510
213, 214, 215, 231D, 232D, 233D



VB-C300, VB-C50I, VB-C60, VC-C50I



dcs 5000 Series, dcs 6600 Series



PTC-200C, PTC-400C, PTC-401C IP



IK-WB21A



iCanView 250/252



VN-C625U, VN-V685U,
VN-V686BU, VN-V686U



BB-HCE381A, BB-HCE481A,
BB-HCE580A, BB-HCE581A,
BB-HCE581A-W, WV-NS202A



SNC-RH124, SNC-RS44/46,
SNC-RX530/550/570
SNC-RZ25, SNC-RZ30,
SNC-RZ50

FIXED COMPATIBLE CAMERAS ALSO AVAILABLE

For detailed list see web site****

ARCHITECTURAL / ENGINEERING SPECIFICATIONS:



The recessed ceiling mount housing is a Moog Videolarm model MR7 or equivalent. The back box is constructed with 18- and 20-gauge steel and is capable of being installed in its entirety from below the ceiling. The steel top measures 5.5" (139.7mm) (h) x 11" (279.4mm) (d). The lower polycarbonate dome is high clarity, injection molded polycarbonate (1 F-stop light reduction for tinted lower dome). An opaque liner with pre-cut viewing window hides the direction of the camera in both the clear and tinted domes. The lower dome is held in place by a 19-gauge steel trim ring (white powder coat finish). The MR7 is designed for installation in either sheetrock or drop ceilings. Three rotating support arms allow for adjustment to the ceiling material thickness.

SPECIFICATIONS:

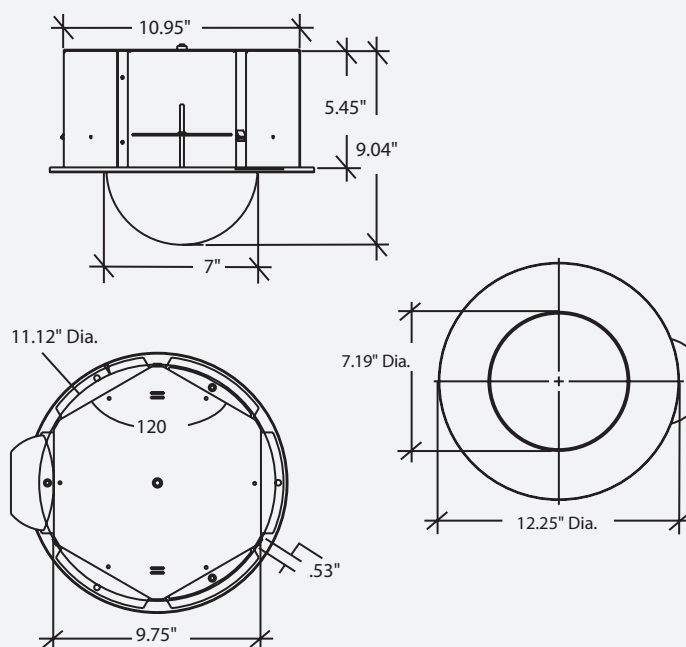
Mechanical Specifications		
Size:	9" x 11" x 12.25"	(230 x 280 x 312mm)
Weight:	10 Lbs.	(4.6 Kg.)
Construction	BACK BOX:	18-and 20-Gauge Steel
	TRIM RING:	19-Gauge Steel
	DOME:	OptiClear™ Polycarbonate
	BODY:	Steel

Environmental Specifications		
Operating Temperature:	32°F to 120°F	(0°C to 49°C)

Shipping Specifications			
Model	Shipping Weight		Box Dimensions
MR7T	10 Lbs.	(4.6 Kg.)	15 x 15 x 12" (381 x 381 x 305mm)

Certifications and Ratings	
 LISTED	 LISTED
UL Listed	cUL Listed

Certifications and Ratings



Dimensions are in inches