

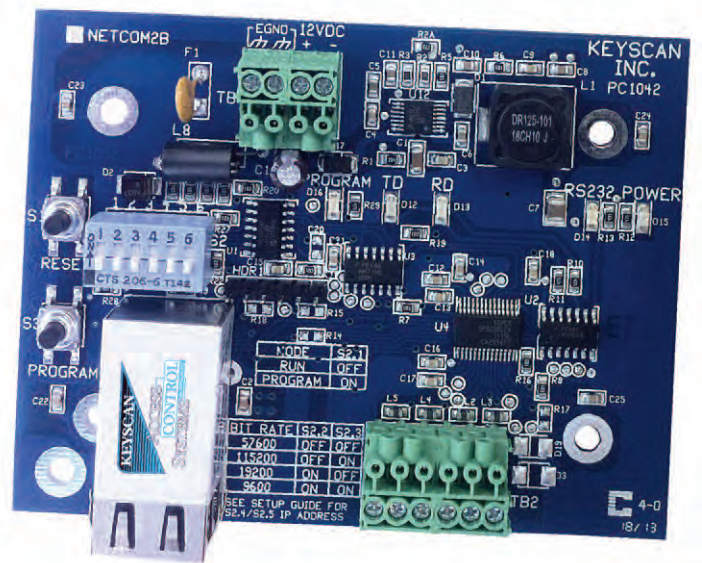
Off-board TCP/IP Communication Module

NETCOM2

Keyscan's NETCOM2 TCP/IP communication module is used to establish Keyscan access control panels as a network-appliance based unit and quickly connect to an existing LAN/WAN network infrastructure.

The NETCOM2 is an off-board TCP/IP communication module that functions just like its predecessor NETCOM2. Only this board features DIP switches allowing convenient set up and configuration when establishing communication along your network.

- Features embedded IP addresses for programming the device on a local network
- Provides serial connection from the ACUs via 10/100 RJ45 network interface to communicate with a server or PC host
- Use static TCP/IP addresses to allow communication over an existing LAN/WAN network
- Unlimited units can be added to a system, offering an enterprise solution
- Fast, easy, trouble-free off-board installation



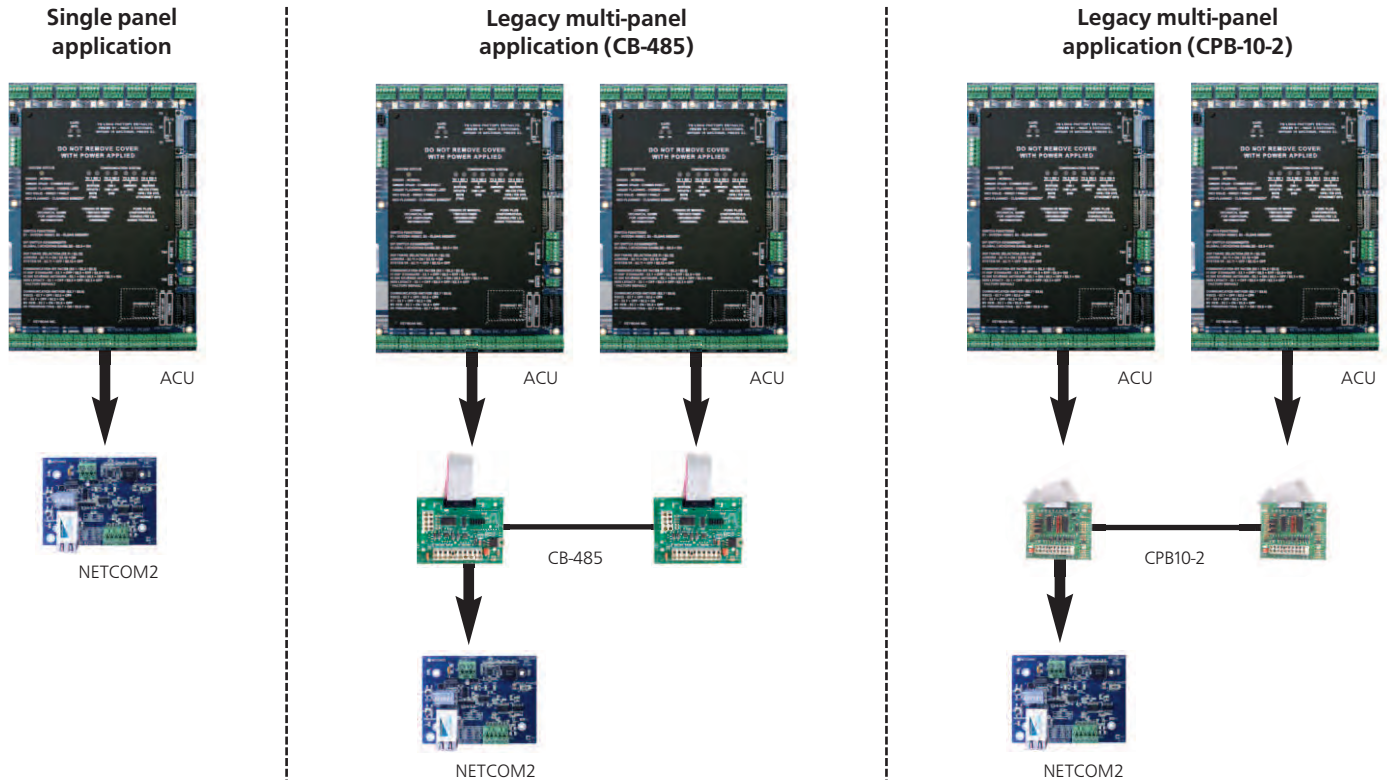
Features and Benefits:

- Allows one or more Access Control Unit(s) to communicate on a LAN/WAN
- DIP switch settings for convenient configuration
- Fast and easy installation for each ACU
- Static TCP/IP communication protocol between PC NIC (Network Interface Card) and Access Control Unit(s) featuring NETCOM2
- Requires Static IP addresses for proper operation
- Simplifies both installation and maintenance procedures

NETCOM2

Off-Board TCP/IP Communication Module

Applications for single panel or legacy multi-panel communication



Specifications:

Input Power

- 12 VDC, 270 mA, powered by DPS15

Cable Length

ACU/ECU to NETCOM

- 22 AWG 5 conductor shielded, 100ft (30 m)

CIM to NETCOM

- 22 AWG 5 conductor shielded max 49.2' @ 9600 baud

Network Communications

- Existing LAN/WAN (TCP/IP protocol port 3001)

Agency Approvals - Ethernet socket

- Complies with Class B limits of EN 55022 : 1998
Direct & Indirect ESD Complies with EN 55024 : 1998

Dimensions

- 3.031" x 3.896" (77mm x 99mm)

Environmental Tolerances

- Suitable for commercial and industrial applications

Operating Temperature

- 5° to 70°C (41° to 158°F)

A Member of the Kaba Group



901 Burns Street East
Whitby, Ontario, L1N 0E6, Canada
Toll Free: 1.888.KEYSCAN (Canada/US)
Tel: +1.905.430.7226
Web: www.keyscan.ca

KEY 2015-01