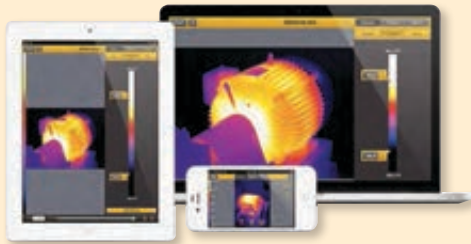


## SmartView® IR Analysis and Reporting Software

### Technical Data



#### Announcing the Fluke SmartView® Mobile app

Bring your office to your inspection site with the free SmartView Mobile app. Create an inspection report while still at the inspection site and communicate directly to your client or manager via your Apple® iPhone® or iPad®.

**Optimize:** Adjust the image to present problems in the most effective way.

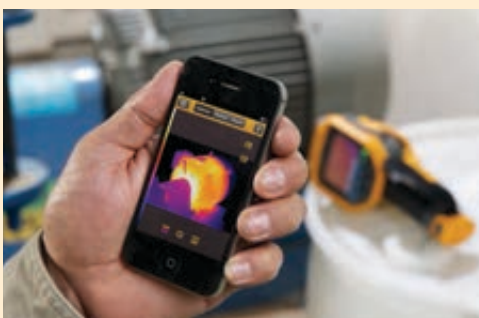
**Analyze:** Use markers and other tools to quantify the severity of problems.

**Communicate:** Share inspection results by emailing images or reports to:

- Plan next steps or gain approval for work done before you even leave the job site
- Get assistance analyzing a problem or finish the job by delivering the report before you've left the site.

Fluke SmartView Mobile will increase the return of your infrared camera investment.

**Download is free. Visit the i-Tunes app store and search on SmartView.**



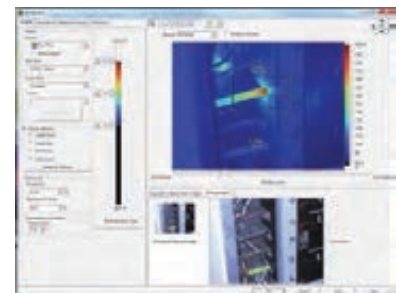
### For Fluke infrared cameras and visual IR thermometers

Fluke SmartView software is included with each Fluke infrared camera and visual IR thermometer. This powerful software is a modular suite of tools that views, optimizes and analyzes infrared (IR) images. It also generates fully customizable and professional-looking reports in a few easy steps. Fine tune your images with comprehensive image optimization tools to clearly communicate problems or provide proof that problems have been resolved. The software is easy to use for maintenance and building professionals, yet delivers the performance specialized thermographers require for advanced analysis.

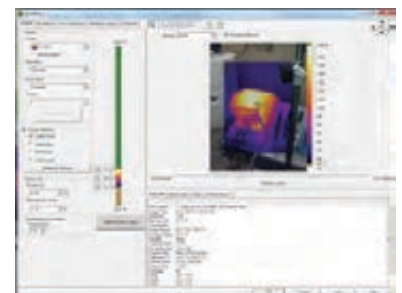
#### Image viewing and optimization

Leverage IR-Fusion® technology viewing options to present images in the most effective way:

- AutoBlend™ mode to blend partially transparent infrared and visible images into a single view for easy problem identification
- Picture-in-picture provides a visible frame around the infrared image to easily orient and reference areas of interest
- Color alarms to isolate problematic areas to clearly identify and communicate problem areas



AutoBlend™ mode



Picture-in-picture

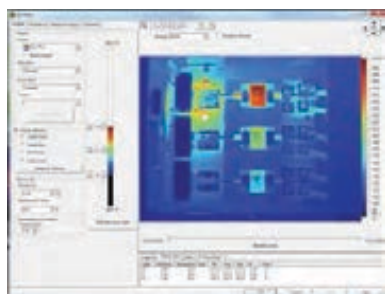
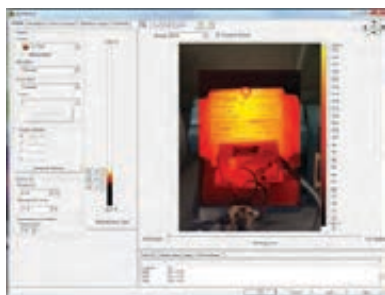


Color alarms

## Image analysis

Use markers to quantify severity of problems and leverage multi-tool connectivity with measurements from CNX™ wireless test tools for additional troubleshooting to solve problems faster.

- Determine severity and prioritize problems discovered during inspections by using markers and CNX measurements to quantify differences in operational characteristics
- Take readings QUICKER, solve problems FASTER and create MORE THOROUGH reports with the addition of CNX measurements to your thermal images



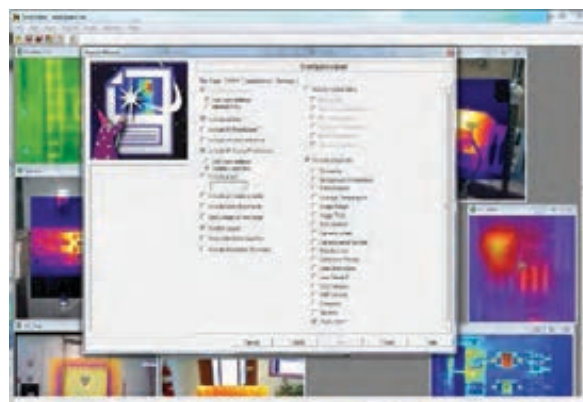
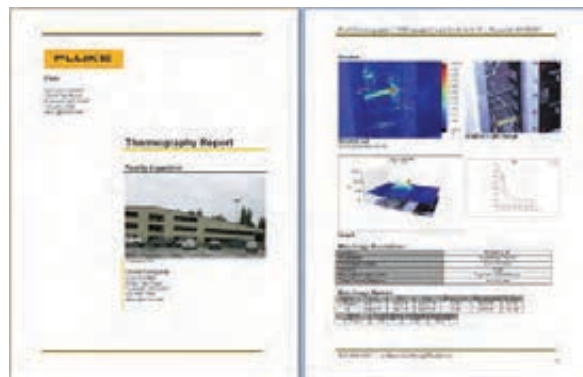
## Communicate results

Share inspection results by emailing images or reports to:

- Plan next steps or gain approval for work done
- If needed, get assistance analyzing the problem
- Provide complete details of your inspection
- Finish the job by delivering a report to your customer or manager with the push of a single button requiring little to no customization

## Simplified report generation

- Generate professional, customized reports fast
- One-click report generation for quick results
- Choice of features including before/after, IR plus digital images, annotations, supporting data and graphics
- Report wizard guides users through report generation—it couldn't be easier



## System requirements:

- Windows® 7/8
- Web browser for product registration and viewing FAQs—Internet Explorer 8.0 or newer
- Memory card reader
- 1 GB RAM for Windows™ 7/8 or later, not including space requirements for Web browser and Microsoft® Word. For better performance, add more RAM.
- 16-bit color, 1024 x 768 resolution or better color printer (for printing images and reports)
- Windows Media Player and video codec for video playing (optional)
- CR-ROM drive (for installing SmartView software—or visit the Fluke site for a convenient download link at [www.fluke.com/smartview](http://www.fluke.com/smartview))

**Fluke Corporation**  
PO Box 9090, Everett, WA 98206 U.S.A.

**Fluke Europe B.V.**  
PO Box 1186, 5602 BD  
Eindhoven, The Netherlands

**For more information call:**  
In the U.S.A. (800) 443-5853 or  
Fax (425) 446-5116  
In Europe/M-East/Africa +31 (0) 40 2675 200 or  
Fax +31 (0) 40 2675 222  
In Canada (800)-36-FLUKE or  
Fax (905) 890-6866  
From other countries +1 (425) 446-5500 or  
Fax +1 (425) 446-5116  
Web access: <http://www.fluke.com>

©2007–2013 Fluke Corporation.  
Specifications subject to change without notice.  
All trademarks are the property of their respective owners. Printed in U.S.A. 8/2013 2680044G\_EN

**Modification of this document is not permitted without written permission from Fluke Corporation.**