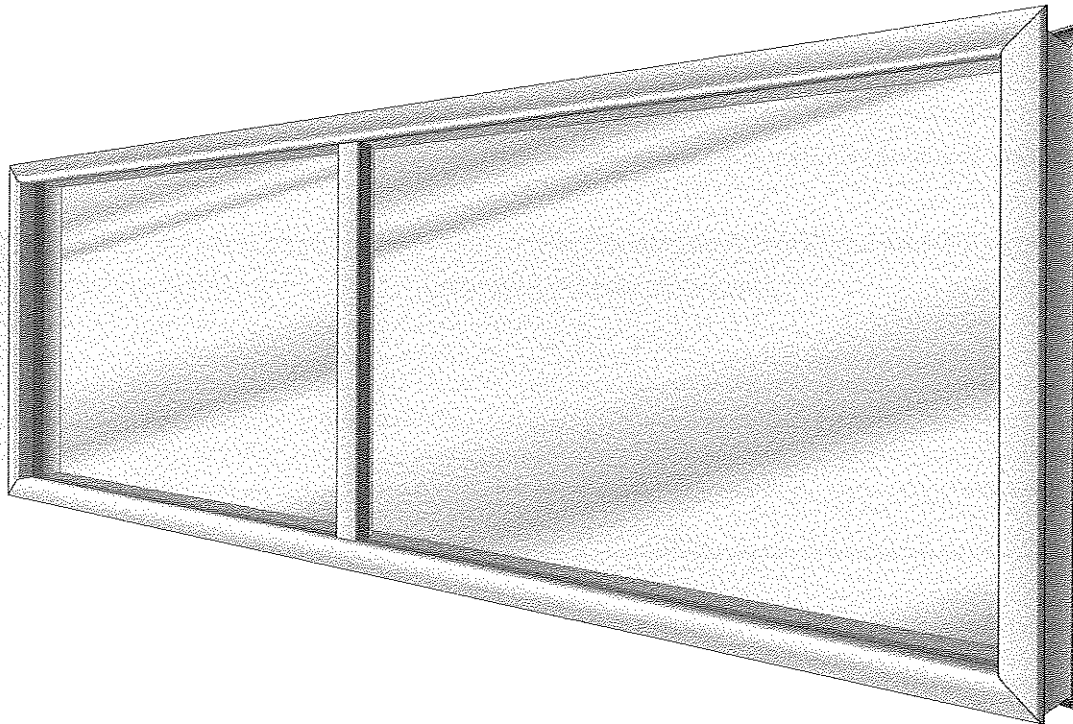


**BULLET RESISTANT
STANDARD VISION WINDOW**

SVL



APPLICATIONS-INTERIOR/EXTERIOR

CODE COMPLIANCE

-Assembly is listed and labeled by Underwriters Laboratories, Inc. (UL) under *Standard for Safety UL 752, Bullet Resisting Equipment* for:

★Level 1 ★Level 2 ★Level 3 ★Level 4 ★Level 5
★Level 6 ★Level 8

A label bearing certification is affixed to the frame on the protected side of the frame.

FRAMING

- Frame profile is 2" x 5-1/2".
- Single rabbet with an applied glazing stop on protected side.
- Formed from SHOT-TEX brand bullet-resistant steel.
- Corners are mitered and welded.
- 4-sided.

CHICAGO BULLET PROOF SYSTEMS
2595 BOND ST.
UNIVERSITY PARK, IL 60484

FRAME FINISH

Prime painted (-P) Satin stainless steel (-S)

TRANSPARENT ARMOR

- UL Listed bullet resistant transparent armor supplied with frame.
- Shipped in a separate crate.
- Field glazing is required.
- Laminated glass is standard.

Optional transparent armors: Glass clad polycarbonate, Glass clad polycarbonate with air gap, Laminated polycarbonate, Acrylic.

WWW.CHICAGOBULLETPROOF.COM

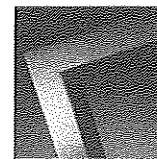
P. (708) 534-9102

F. (708) 534-9132

SVL



**BULLET RESISTANT
STANDARD VISION WINDOW**



INSTALLATION

SVL Vision Windows are designated to be built into coursed masonry wall construction. Each frame is supplied with 6 adjustable "T"-strap anchors that insert between the courses to block or brick.

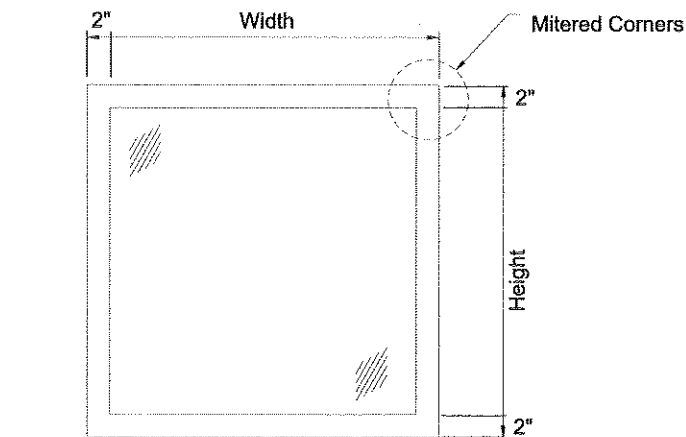
Special preparation for EMA anchors (9/32" holes) or dry wall installation must be requested at the time of ordering.

Standard Sizes

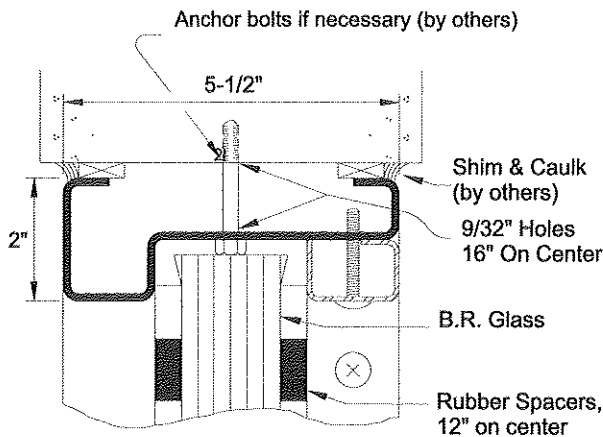
Model	O.A. Size	Recommended Wall Opening	Min. Shipping Weight
SVL24	24" x 36"	24-1/2" x 36-1/2"	175
SVL30	30" x 36"	30-1/2" x 36-1/2"	210
SVL36	36" x 36"	36-1/2" x 36-1/2"	240
SVL60	60" x 36"	60-1/2" x 36-1/2"	370
SVL96	96" x 36"	96-1/2" x 36-1/2"	560

NOTES

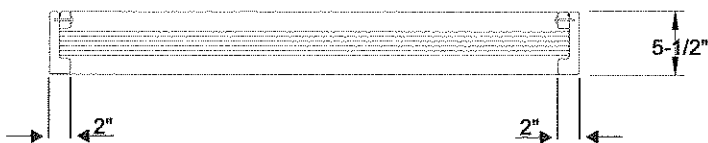
- Special frame, glass, and size conditions are available.** Please contact CBPS.
- Frames over 96" wide have one vertical division mullion dividing frame into two equal transparent panels.
- Frames over 180" wide are shipped in two sections for convenience in handling and must be reassembled by the installer.
A factory prepared spline joint secures the two sections together.



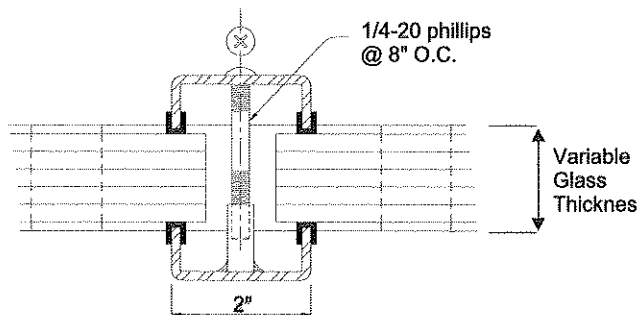
ELEVATION



HEAD/JAMB



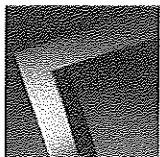
PLAN



DIVISION MULLION FOR UNITS 96" & OVER

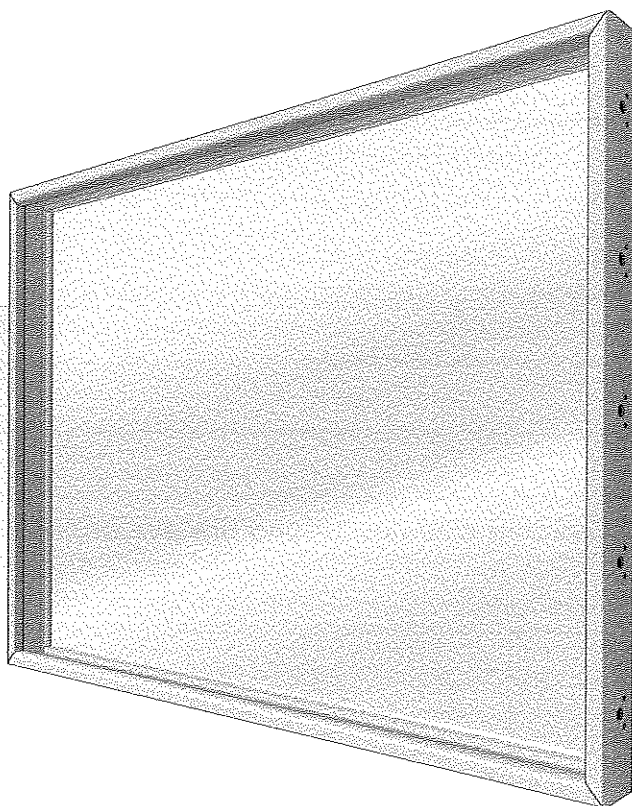
CHICAGO BULLET PROOF SYSTEMS
2595 BOND ST.
UNIVERSITY PARK, IL 60484

WWW.CHICAGOBULLETPROOF.COM
P. (708) 534-9102
F. (708) 534-9132



BULLET RESISTANT
NARROW PROFILE VISION WINDOW

NVL



APPLICATIONS-INTERIOR, MAXIMUM VISION,
MINIMAL FRAME

CODE COMPLIANCE

-Assembly is listed and labeled by Underwriters Laboratories, Inc. (UL) under *Standard for Safety UL 752, Bullet Resisting Equipment* for:

★Level 1 ★Level 2 ★Level 3 ★Level 4 ★Level 6

A label bearing certification is affixed to the protected side of frame.

FRAMING

- Frame profile is 1-1/4"x 3-1/4" for ballistic Levels 1 & 2.
- Frame profile is 1-1/4"x 3-3/4" for ballistic Levels 3 & 4.
- Formed from SHOT-TEX brand bullet-resistant steel.
- Mitered and welded corners.
- 4-sided.
- Applied glazing stop on protected side.

SHOT-TEX is a registered trademark of CBPS

FRAME FINISH

Prime painted (-P) Satin stainless steel (-S)

TRANSPARENT ARMOR

- UL listed bullet resistant transparent armor supplied with frame.
- Shipped in a separate crate.
- Includes acoustic rubber spacers for seating transparent armor into framing.
- Field glazing is required.
- Laminated glass is standard.

Optional transparent armors: Glass clad polycarbonate, Glass clad polycarbonate with air gap, Laminated polycarbonate, Acrylic.

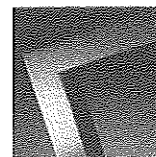
CHICAGO BULLET PROOF SYSTEMS
2595 BOND ST.
UNIVERSITY PARK, IL 60484

WWW.CHICAGOBULLETPROOF.COM
P. (708) 534-9102
F. (708) 534-9132

NVL



**BULLET RESISTANT
NARROW PROFILE VISION WINDOW**



INSTALLATION

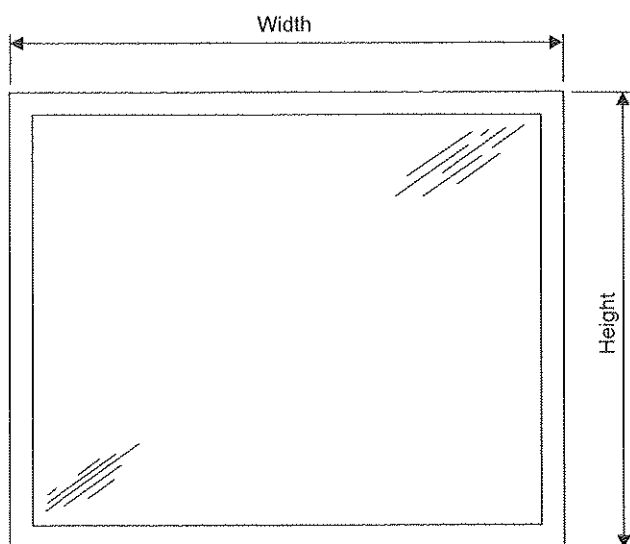
NVL Vision Windows are designed for installation into finished openings within wall construction types such as steel studs, poured concrete, structural steel, etc. through the use of bolt anchors in the frame. Anchor bolts are **not** supplied by Chicago Bullet Proof. The NVL frame is provided with 9/32" diameter holes for bolt anchors.

Standard Sizes

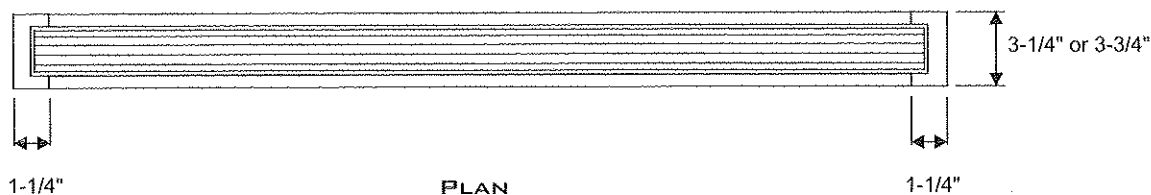
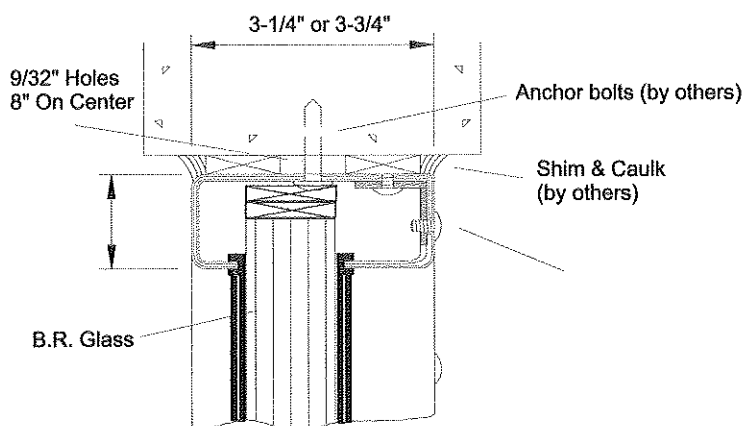
Model	O.A. Size	Recommended Wall Opening	Min. Shipping Weight
NVL24	24" x 36"	24-1/2" x 36-1/2"	113
NVL32	32" x 36"	32-1/2" x 36-1/2"	147
NVL48	48" x 36"	48-1/2" x 36-1/2"	216
NVL60	60" x 36"	60-1/2" x 36-1/2"	268
NVL72	72" x 36"	72-1/2" x 36-1/2"	319

NOTE:

1. **Special frame, glass, sill, ledge and size conditions are available.** Please contact CBPS.



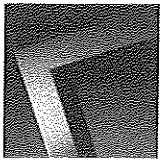
IMPACT SIDE ELEVATION



PLAN

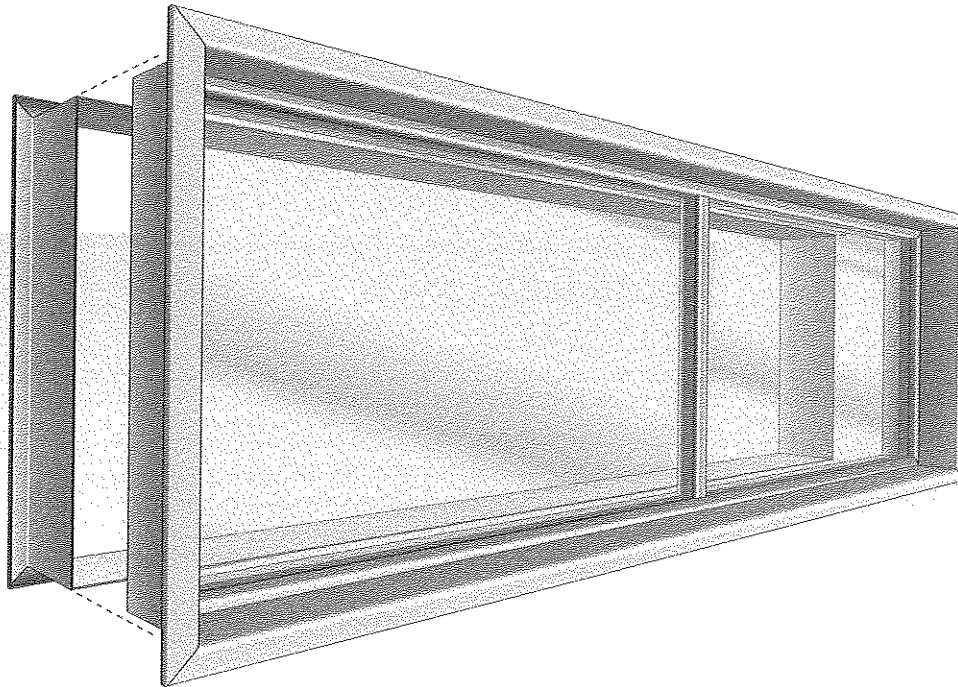
CHICAGO BULLET PROOF SYSTEMS
2595 BOND ST.
UNIVERSITY PARK, IL 60484

WWW.CHICAGOBULLETPROOF.COM
P. (708) 534-9102
F. (708) 534-9132



**BULLET RESISTANT
CLAMP-ON VISION WINDOW**

CVL



APPLICATIONS - INTERIOR/EXTERIOR

-Guardhouses, control rooms, entry control, cashier areas.

CODE COMPLIANCE

Assembly is listed and labeled by Underwriters Laboratories, Inc. (UL) under *Standard for Safety UL 752, Bullet Resisting Equipment* for:

★Level 1 ★Level 2 ★Level 3 ★Level 4 ★Level 6

A label bearing certification is affixed to the protected side of the frame.

FRAMING

- Telescopic to adjust to wall thicknesses varying from 4-1/2" to 8-1/2" by clamping the wall opening.
- Formed from SHOT-TEX® brand bullet resistant steel.
- Mitered and welded corners.
- Single rabbet with an applied glazing stop on the protected side.

SHOT-TEX® is the registered trademark of Chicago Bullet Proof Systems.

FRAME FINISH

Prime painted (-P) Satin stainless steel (-S)

TRANSPARENT ARMOR

- UL Listed bullet resistant transparent armor supplied with frame.
- Shipped in a separate crate.
- Field glazing is required.
- Laminated glass is standard.

Optional transparent armors: Glass clad polycarbonate, Glass clad polycarbonate with air gap, Laminated polycarbonate, Acrylic

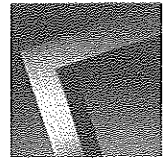
CHICAGO BULLET PROOF SYSTEMS
2595 BOND ST.
UNIVERSITY PARK, IL 60484

WWW.CHICAGOBULLETPROOF.COM
P. (708) 534-9102
F. (708) 534-9132

CVL



**BULLET RESISTANT
CLAMP-ON VISION WINDOW**



INSTALLATION

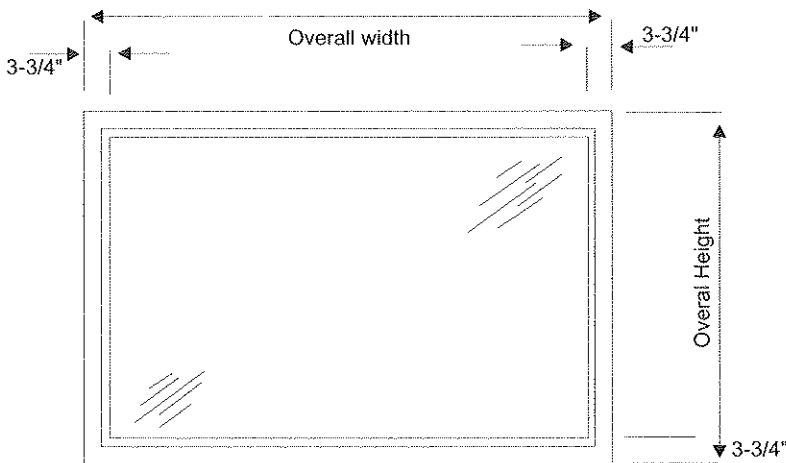
CVL Service Windows "wrap around" the finished wall thickness, concealing the prepared wall opening. Installation is accomplished by blocking the interior flange in place within the wall opening, inserting the exterior clamping flange into interior frame section, and drawing the clamping bolts tight to clamp the wall.

Standard Sizes

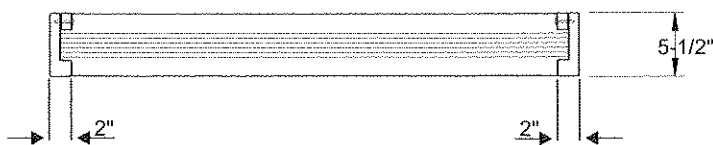
Model	O.A. Size	Recommended Wall Opening	Min. Shipping Weight
CVL24	26 1/4"x 37 3/4"	25"x 36 1/2"	200
CVL32	34 1/4"x 41 3/4"	33" x 40 1/2"	265
CVL48	50 1/4"x 41 3/4"	49"x 40 1/2"	370
CVL60	62 1/4"x 41 3/4"	61"x 40 1/2"	460
CVL72	74 1/4"x 41 3/4"	73"x 40 1/2"	550

NOTE:

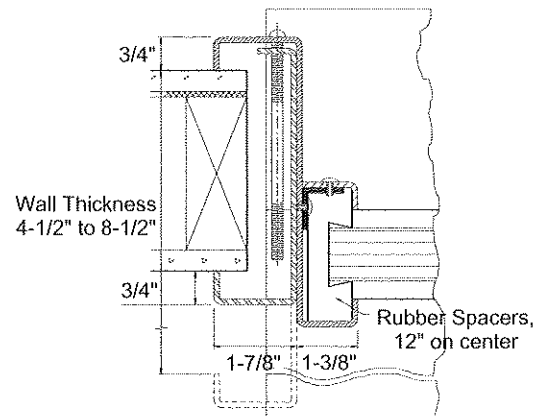
1. **Special frame, glass and size conditions are available.** Please contact the CBPS.
2. The CVL Vision Window can be custom ordered in widths up to 180". CVL Vision windows 120" and greater have one vertical division mullion dividing frame into two equal transparent panels.
3. CVL Vision Windows with widths 120" and greater are shipped in two sections for convenience in handling and shipping. The sections must be assembled in the field by the installer. Factory prepared spline joints secure the two sections together.



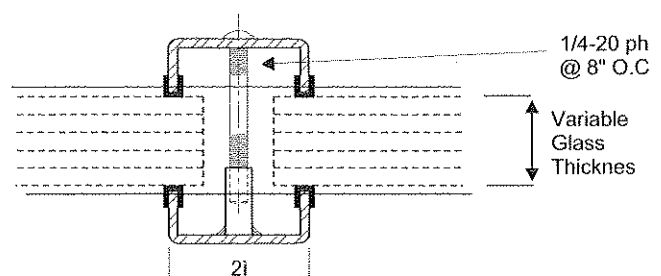
THREAT SIDE ELEVATION



PLAN



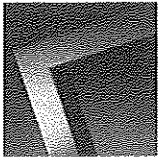
HEAD / JAMB



DIVISION MULLION FOR UNITS 96" & OVER

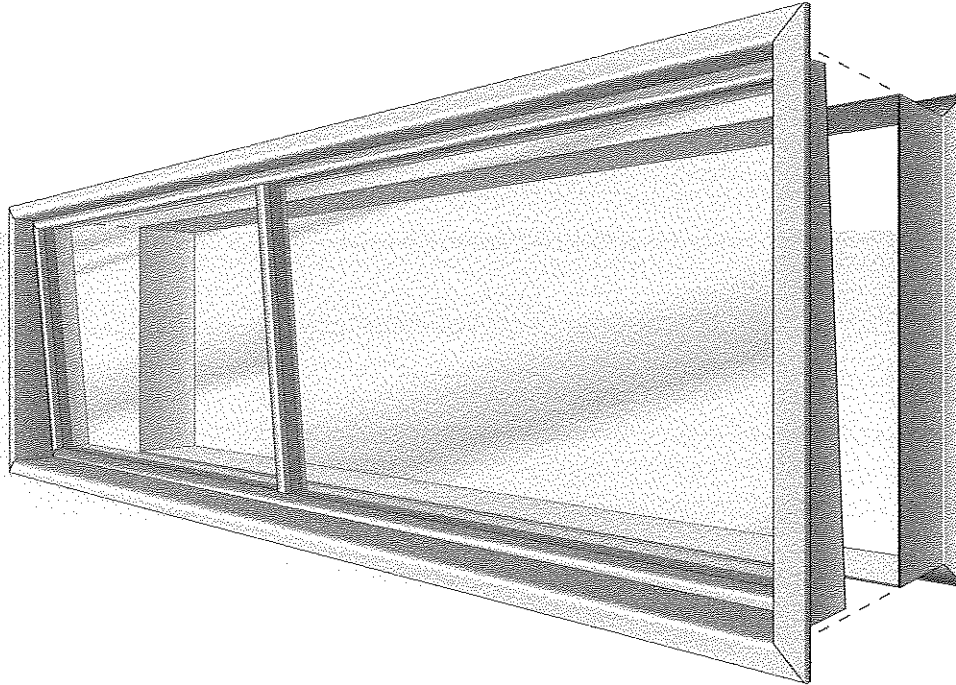
CHICAGO BULLET PROOF SYSTEMS
2595 BOND ST.
UNIVERSITY PARK, IL 60484

WWW.CHICAGOBULLETPROOF.COM
P. (708) 534-9102
F. (708) 534-9132



**BULLET RESISTANT
CLAMP-ON VISION WINDOW**

CV



APPLICATIONS - INTERIOR/EXTERIOR

-Guard turrets and towers, bank drive-up, checkpoints, observation towers.

CODE COMPLIANCE

Assembly is listed and labeled by Underwriters Laboratories, Inc. (UL) under *Standard for Safety UL 752, Bullet Resisting Equipment* for:

Level 1 ★Level 2 ★Level 3 ★Level 4 ★Level 6

A label bearing certification is affixed to the protected side of the frame.

FRAMING

- Telescopic to adjust to wall thicknesses varying from 8" to 12" by clamping the wall opening.
- Formed from SHOT-TEX brand bullet resistant steel
- Mitered and welded corners.
- Single rabbet with an applied glazing stop on the protected side.
- Subframe for glass is inclined five degrees to vertical, slanted away from the protected side of window to reduce glare.

SHOT-TEX is the registered trademark of Chicago Bullet Proof Systems.

FRAME FINISH

Prime painted (-P) Satin stainless steel (-S)

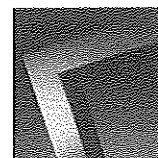
TRANSPARENT ARMOR

- UL listed bullet resistant transparent armor supplied with frame.
- Shipped in a separate crate.
- Field glazing is required.
- Laminated glass is standard.

Optional transparent armors: Glass clad polycarbonate, Glass clad polycarbonate with air gap, Laminated polycarbonate, Acrylic

CHICAGO BULLET PROOF SYSTEMS
2595 BOND ST.
UNIVERSITY PARK, IL 60484

WWW.CHICAGOBULLETPROOF.COM
P. (708) 534-9102
F. (708) 534-9132



INSTALLATION

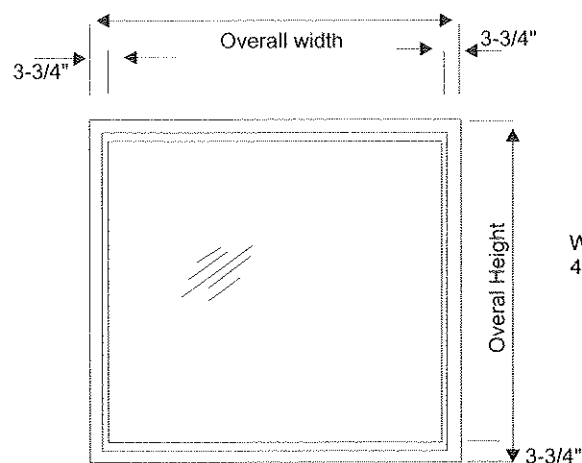
CV Service Windows "wrap around" the finished wall thickness, concealing the prepared wall opening. Installation is accomplished by blocking the interior flange in place within the wall opening, inserting the exterior clamping flange into interior frame section, and drawing the clamping bolts tight to clamp the wall.

Standard Sizes

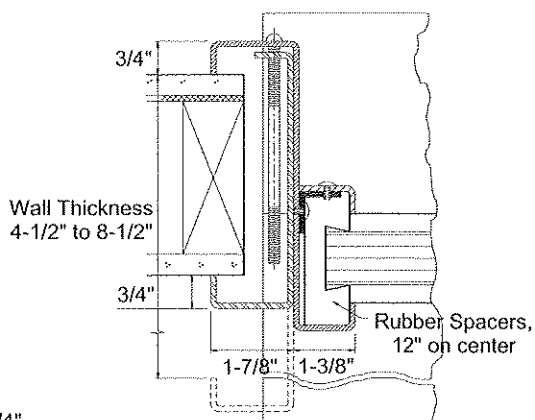
Model	O.A. Size	Recommended Wall Opening	Min. Shipping Weight
Cv 60	60" x 40"	58-1/2" x 38-1/2"	400
Cv 120	120" x 40"	118-1/2" x 38-1/2"	725
Cv 180	180" x 40"	178-1/2" x 38-1/2"	1100

NOTE:

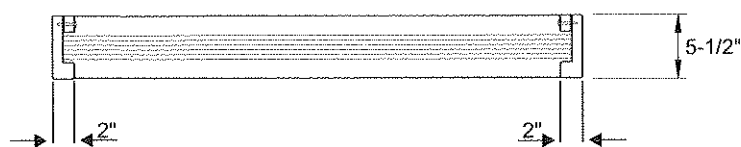
1. **Special frame, glass and size conditions are available.** Please contact CBPS.
2. CV Vision windows 120" and greater have one vertical division mullion dividing frame into two equal transparent panels.
3. CV Vision Windows with widths 120" and greater are shipped in two sections for convenience in handling and shipping. The sections must be assembled in the field by the installer. Factory prepared spline joints secure the two sections together.



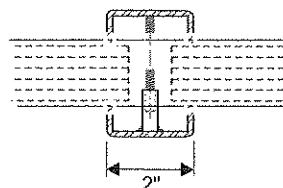
THREAT SIDE ELEVATION



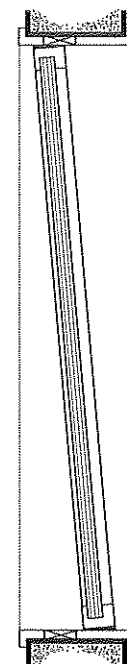
HEAD / JAMB



PLAN



DIVISION MULLION FOR UNITS 96" & OVER



VERTICAL
CROSS SECTION