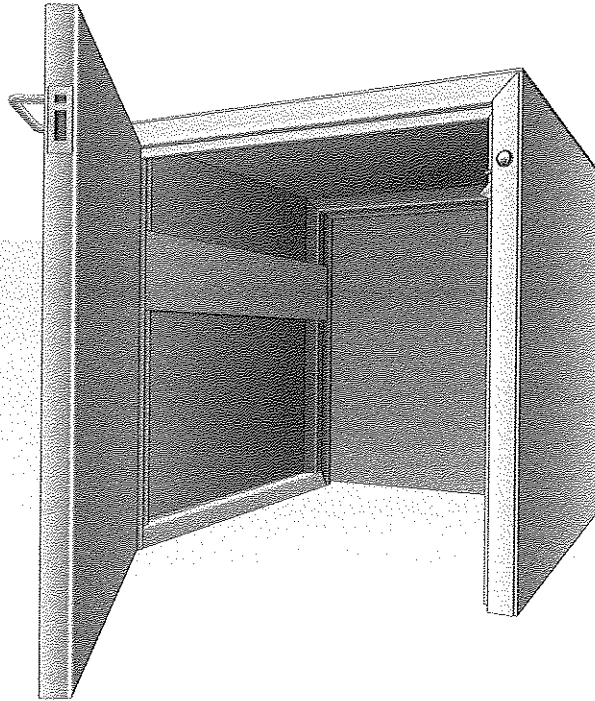


BULLET PROOF
BULLET RESISTANT
MONEY CART PASS THRU

MCPT



APPLICATIONS-INTERIOR/EXTERIOR

-The MCPT unit is a transfer device which allows for the passage of a wheeled cart or pallet carrying coin, currency, data processing materials, or other heavy, bulky items, through a wall or partition. Use of the MCPT alleviates the need to open personnel doors, thus avoiding a compromise in security. Typical uses include: Access control checkpoints, armories, bank operations areas, cash vaults, currency receiving rooms, material vaults and workrooms.

CODE COMPLIANCE

Assembly is listed and labeled by Underwriters Laboratories, Inc. (UL) under *Standard for Safety UL 752, Bullet Resisting Equipment* for:

★Level 3, ★Level 4

A label bearing certification is affixed to the protected side.

PASS-THRU

-Constructed from SHOT-TEX brand bullet resistant steel
-All welded construction.
-Welds are ground smooth before prime painting or brushing stainless steel.

DOORS

-Constructed from SHOT-TEX brand bullet resistant steel.
-3/4" cut at bottom of door for threshold is required.
-34-1/2" w X 39" h clear opening.
-1-3/4" thick.
-All welded construction.
-Interlock for one door to be open at one time.

HARDWARE

Standard package includes:

-CBP continuous hinges
-(2) Stainless steel pulls
-Silencers
-(2) Brink's 3020 x US32D mortise deadlocking latch x fail secure operation- 24 VDC- CBP provides key cylinder only on exterior side of both doors. **Actuators, transformers and electrical wiring is by others.**
-Raceway channel/bumper on each interior side for wiring trough.

★EXTRA COST OPTIONS:★

-Weatherstripping for exterior door

FINISH

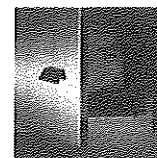
Prime painted (-P), Stainless steel (-S)

CHICAGO BULLET PROOF SYSTEMS
2595 BOND ST.
UNIVERSITY PARK, IL 60484

WWW.CHICAGOBULLETPROOF.COM

P. (708) 534-9102

F. (708) 534-9132



INSTALLATION

-The pass-thru unit shall arrive at the site assembled, including the electromechanical locks. The interconnecting electrical components (provided by others) shall be field wired.

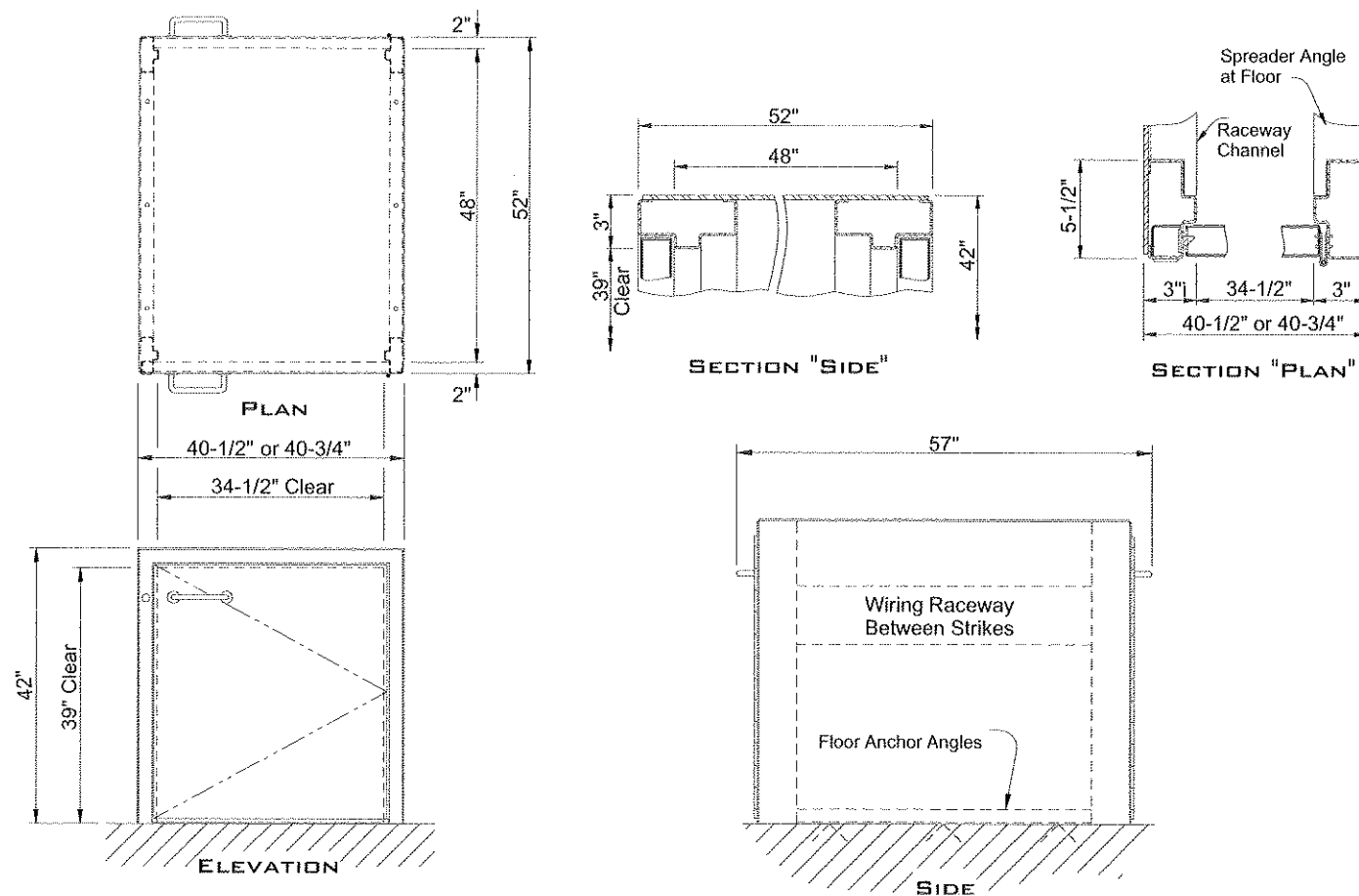
- 1) Prepare opening in wall. The standard size Level 3 unit requires a 41" wide x 42-1/2" high wall opening. The standard Level 4 unit requires a 41-1/4" wide by 42-3/8" high wall opening.
- 2) Using a carbide drill bit, the installer must drill a hole through the body of the unit to bring in power. The location and size of this hole is to be determined by the installer. CBPS recommends this hole to be located on the latch bolt side of the unit behind the 8" high raceway channel inside the unit.
- 3) Slide unit into place, adjusting projections beyond faces of wall as required. Make conduit connections, if necessary, then anchor unit in place with six (6) Hilti #12-234 "KWICKBOLTS" or equals (supplied by others). Bolts go through the floor angles on the units interior into the finished floor.
- 4) Remove 8" raceway channel inside the unit to expose wiring access from frame to frame. Install the electric deadbolts within the mortises, reinstall the raceway channel to cover wires and reverse pull handles on doors and finish joints between unit and wall.

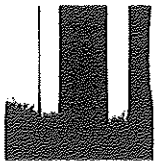
Standard Sizes

Model	O.A. Size	Wall Opening	Interior Clear Dimension	Weight
MCPT-Level 3	40-1/2"w x 42"h x 57"d	41"w x 42-1/2"h	34-1/2"w x 39"h x 48"d	900 lbs.
MCPT-Level 4	40-3/4"w x 42-1/8"h x 57"d	41-1/4"w x 42-1/2"h	34-1/2"w x 39"h x 48"d	1350 lbs.

NOTE:

Speical sizes and swings available: both hinges must be on the same side of the unit. Consult CBPS for assistance.

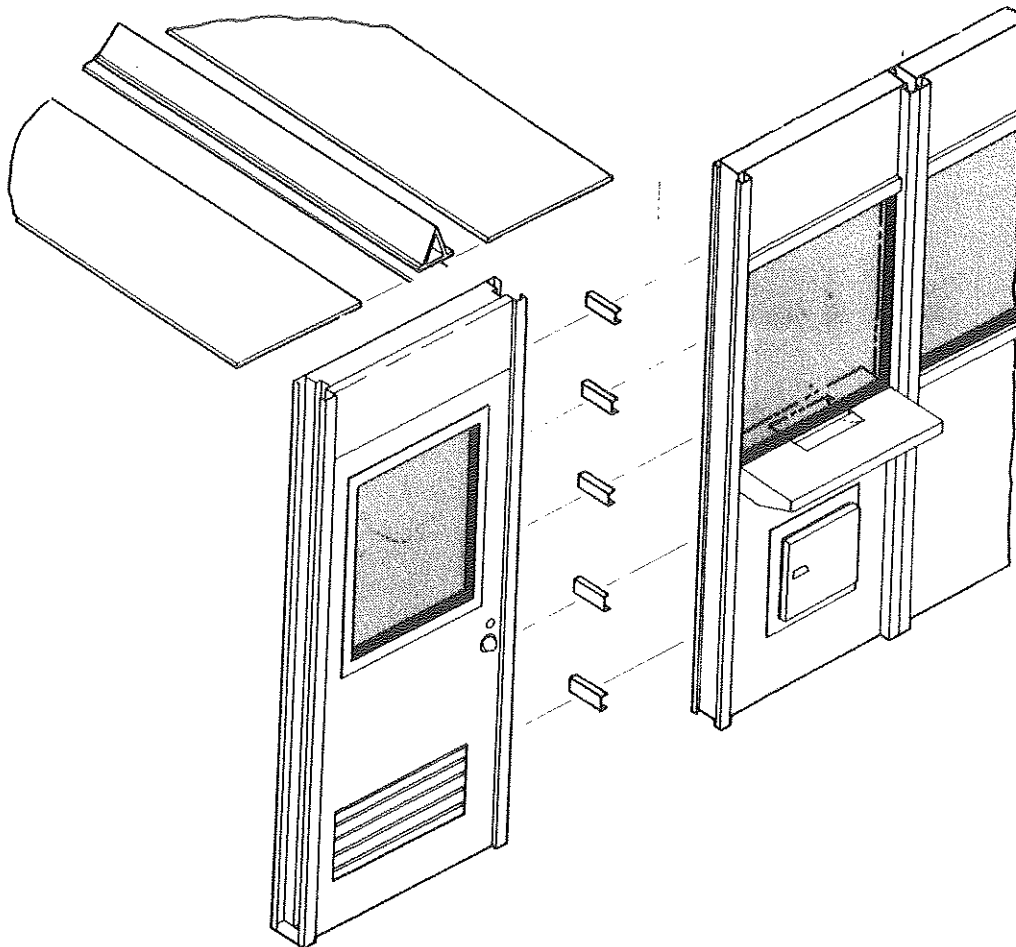




BULLET PROOF

**BULLET RESISTANT
MODULAR GUARD ENCLOSURES**

MGE



APPLICATIONS - INTERIOR/EXTERIOR USE
for fully enclosed or self-contained bullet resistant rooms or buildings, point of sale areas, parking lots, toll collection, guard stations, self-service gas stations.

CODE COMPLIANCE

Assemblies are listed and labeled by Underwriters Laboratories, Inc. (UL) under *Standard for Safety UL 752, Bullet-Resisting Equipment* for:

★Level 1, ★Level 2, ★Level 3, ★Level 4

Consult CBPS for higher levels.

A label bearing certification is affixed to the protected side of frame.

DESCRIPTION

MGE is a modular system of wall panels which can be connected to create continuous walls or enclosures. Panels are easier to carry into buildings and down narrow passage ways. They can be disassembled and rearranged if desired for relocation. MGEs can also be used to create large guard enclosures which could not be shipped prefabricated.

PANELS ARE AVAILABLE IN THE FOLLOWING UNITS:

-Flush panel, panel with vision window, panel with teller window, panel with door, ceiling panel, corner post.

OPTIONS:

-Gunport, package passer, and louvre.
-Connectors are provided for connecting panels together.

SIZES

-Suggested not to exceed 36" w x 120" h for handling purposes.

FINISH

-Prior to shipment, panels are degreased, all welds are ground smooth, and assemblies are spray-painted with rust-inhibiting primer.

CHICAGO BULLET PROOF SYSTEMS
2595 BOND ST.
UNIVERSITY PARK, IL 60484

WWW.CHICAGOBULLETPROOF.COM

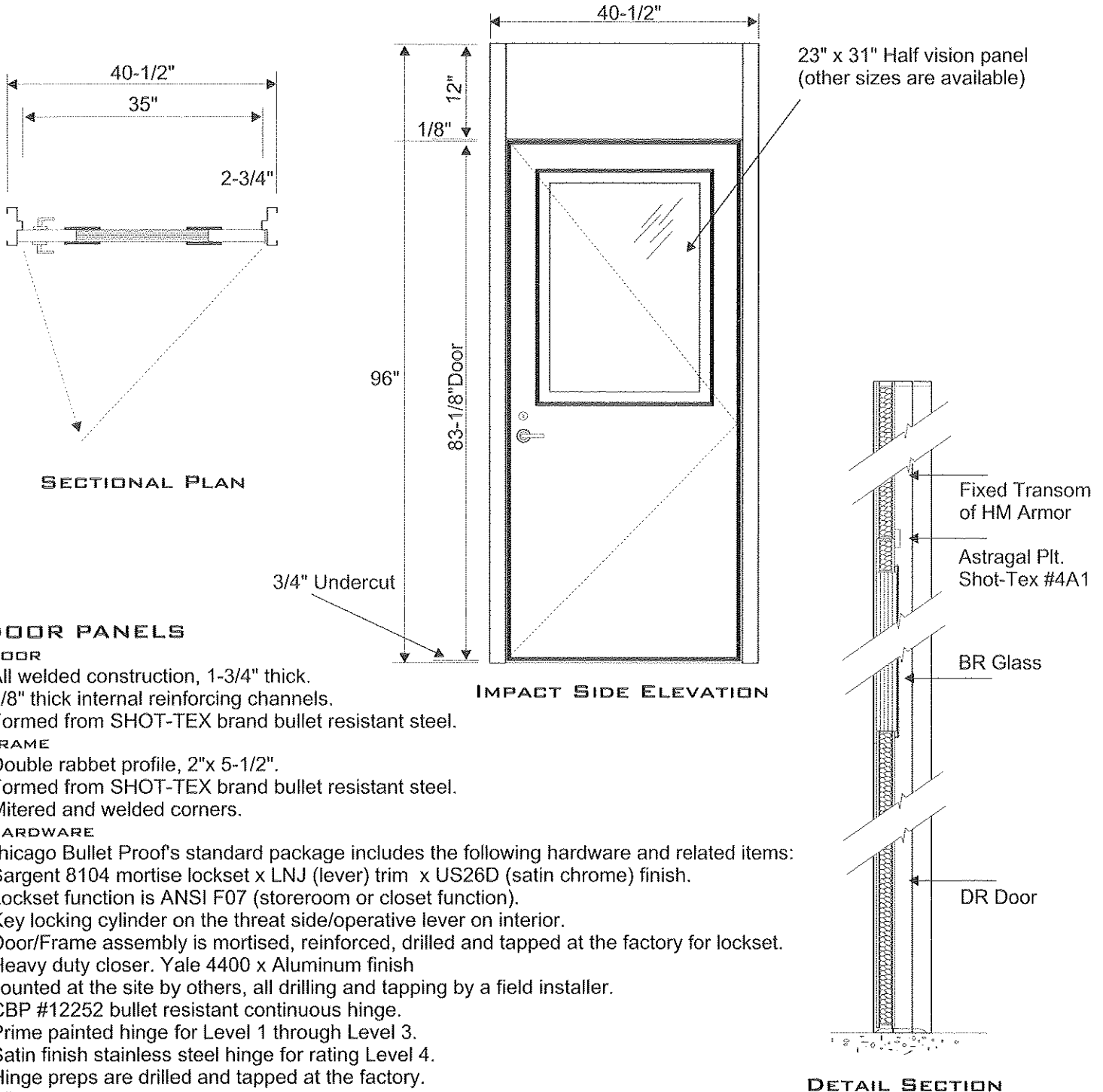
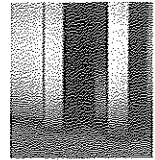
P. (708) 534-9102

F. (708) 534-9132

MGE

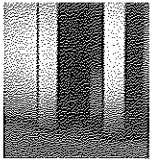


**BULLET RESISTANT
MODULAR GUARD ENCLOSURES**



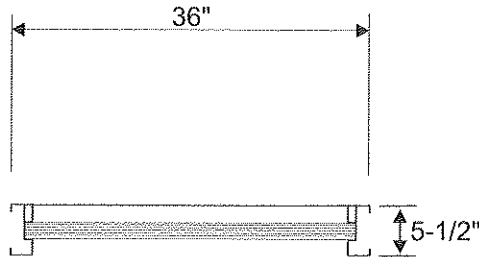
CHICAGO BULLET PROOF SYSTEMS
2595 BOND ST.
UNIVERSITY PARK, IL 60484

WWW.CHICAGOBULLETPROOF.COM
P. (708) 534-9102
F. (708) 534-9132



**BULLET RESISTANT
MODULAR GUARD ENCLOSURES**

MGE



SECTIONAL PLAN

WINDOW PANELS

TRANSPARENT ARMOR

- UL Listed bullet resistant transparent armor supplied with frame.
- Shipped in a separate crate.
- Includes acoustic rubber spacers for seating transparent armor into framing for transaction windows.
- Field glazing is required.
- Laminated glass is standard

Optional transparent armors: Glass clad polycarbonate, Glass clad polycarbonate with air gap, Laminated polycarbonate, Acrylic.

TRANSACTION WINDOW PANELS

DEAL TRAY & SILL

- For transacting items not to exceed 12-3/4" in width x 1-5/8" in height.
- Satin stainless steel finish.
- Sill runs width of window.

OPTIONAL LEDGE FEATURE

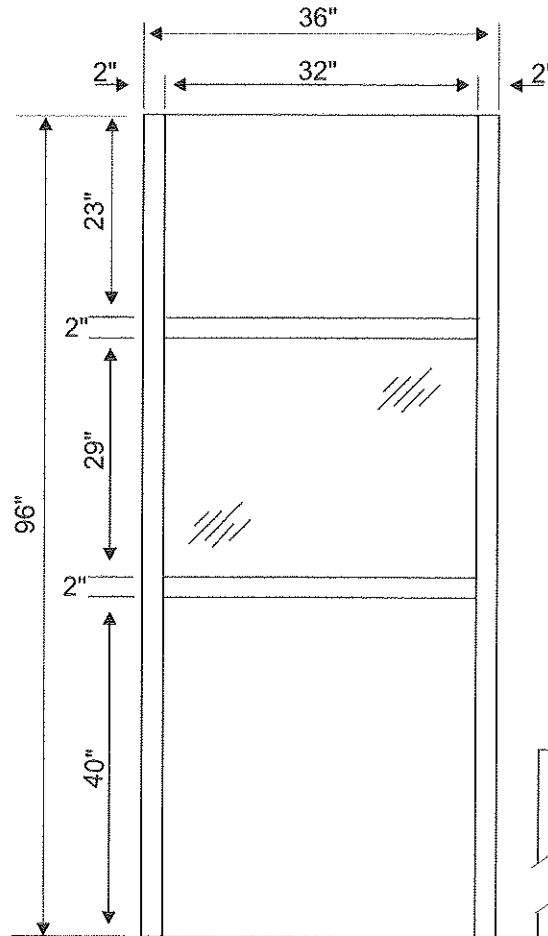
- 6 1/2" stainless steel writing ledge extending the full width of the sill.
- On either or both sides of window.

This option is an integral part of the sill and available only at the time of ordering.

OPTIONS

- PP PACKAGE PASSER - See standard data sheet.
- GP3 OR GP4 GUNPORT - See standard data sheet.
- LOUVRE - See standard data sheet.
- CUSTOM SHROUDS FOR HVAC AND AND ELECTRICAL OR PLUMBING PENETRATION.

CUSTOM-BUILT UNITS AVAILABLE.

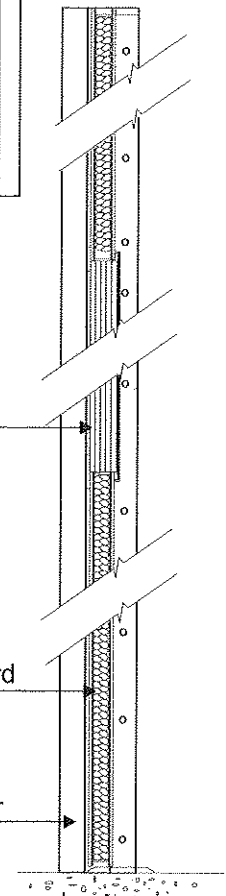


**IMPACT SIDE
ELEVATION**

BR Glass

Fiberglass Insulation
Semi-rigid Inorganic Glass Fiber Board

HM Armor



DETAIL SECTION

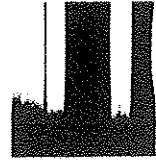
CHICAGO BULLET PROOF SYSTEMS
2595 BOND ST.
UNIVERSITY PARK, IL 60484

WWW.CHICAGOBULLETPROOF.COM
P. (708) 534-9102
F. (708) 534-9132

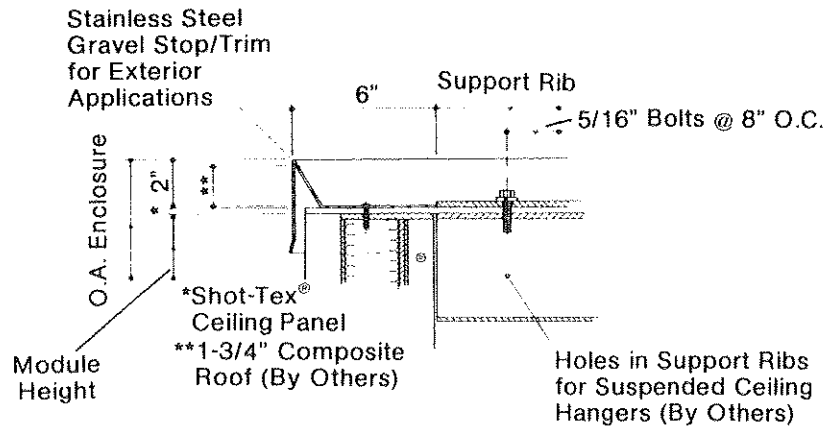
MGE



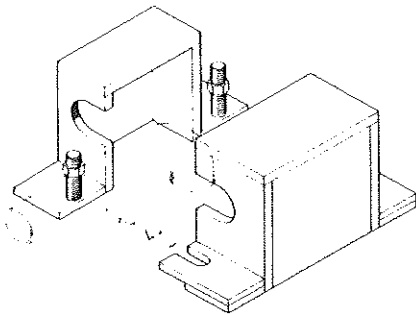
**BULLET RESISTANT
MODULAR GUARD ENCLOSURES**



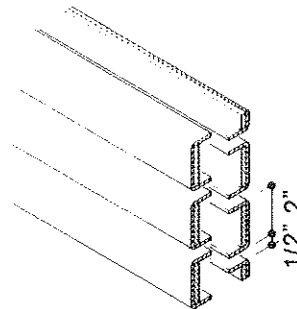
MISCELLANEOUS DETAILS



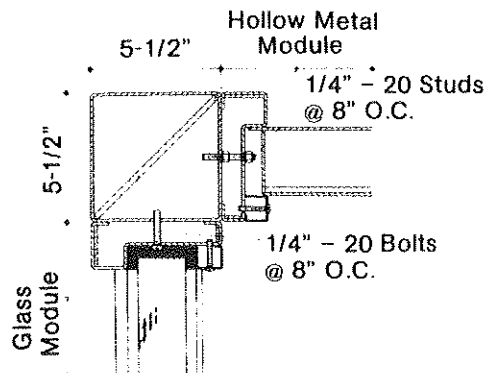
CEILING ARMOR
(Vertical Cross Section)



**PLUMBING/ELECTRICAL
PENETRATION SHROUDS**



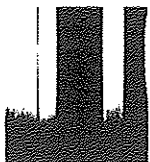
LOUVRE PANELS



CORNER POSTS
(Horizontal Cross Section)

CHICAGO BULLET PROOF SYSTEMS
2595 BOND ST.
UNIVERSITY PARK, IL 60484

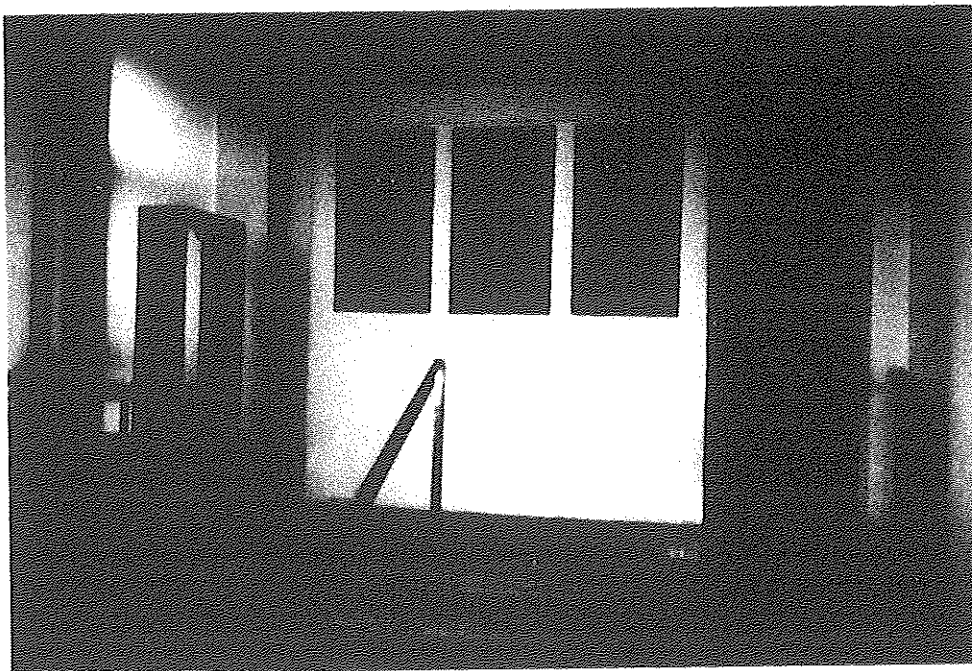
WWW.CHICAGOBULLETPROOF.COM
P. (708) 534-9102
F. (708) 534-9132



BULLET RESISTANT

TRANSPORTABLE GUARD ENCLOSERS

TGE



APPLICATIONS -

Fully enclosed bullet resistant shelters provide secure working environments for vital operational areas such as entry control checkpoints, central alarm stations, sensitive material storage, surveillance posts, field payroll offices.

CODE COMPLIANCE

Assembly is only manufactured from materials (steel and glass) which are UL listed and labeled by Underwriters' Laboratories, Inc. (UL), under Standard for Safety UL 752, Bullet Resisting Equipment for:

*Level 1, *Level 2, *Level 3, *Level 4,
*Level 5, *Level 6, *Level 8

NO UL LABEL IS AVAILABLE WITH THIS UNIT

DESCRIPTION

TGE are prefabricated and assembled enclosures with surround vision and door access. Typical units include interior and exterior finishes, and other options as required. At the site TGEs are offloaded and anchored to prepared pads or tower structures. The necessary services are then connected making the TGEs ready for staffing in a fraction of the time required to construct enclosures using conventional building materials.

FINISH

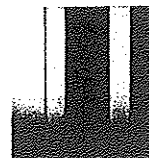
-Prior to shipment, panels are degreased, all welds are ground smooth, and assemblies are spray-painted with rust-inhibiting primer.

CHICAGO BULLET PROOF SYSTEMS
2595 BOND ST.
UNIVERSITY PARK, IL 60484

WWW.CHICAGOBULLETPROOF.COM

P. (708) 534-9102

F. (708) 534-9132



FEATURES

DOOR

- All welded construction, 1-3/4" thick.
- 1/8" thick internal reinforcing channels.
- Formed from SHOT-TEX brand bullet resistant steel.

HARDWARE

Chicago Bullet Proof's standard package includes the following hardware and related items:

- Sargent 8104 mortise lockset x LNJ (lever) trim x US26D (satin chrome) finish.
- Lockset function is ANSI F07 (storeroom or closet function).
- Key locking cylinder on the threat side/operative lever on interior.
- Door/Frame assembly is mortised, reinforced, drilled and tapped at the factory for lockset.
- Heavy duty closer. Yale 4400 x Aluminum finish
- Mounted at the site by others, all drilling and tapping by a field installer.
- CBP #12252 bullet resistant continuous hinge.
- Prime painted hinge for Level 1 through Level 3.
- Satin finish stainless steel hinge for rating Level 4.
- Hinge preps are drilled and tapped at the factory.
- Silencers.

STANDARD HARDWARE OPTIONS

Folger Adams 712 electric strike x 24VAC x LBM x US26D (satin chromium) finish.

(Access control and transformer for electric strike are by others)

- UL Listed bullet-resisting ventilatant louvre: LVU series louvre panel, 24" wide x 12" high.
- Batt fiberglass insulation, Threshold and Weatherstrip.

WINDOW PANELS

TRANSPARENT ARMOR

- UL Listed bullet resistant transparent armor supplied with frame.
- Shipped in a separate crate.
- Includes acoustic rubber spacers for seating transparent armor into framing for transaction windows.
- Field glazing is required.
- Laminated glass is standard

-Optional transparent armors: Glass clad polycarbonate, Glass clad polycarbonate with air gap, Laminated polycarbonate, Acrylic.

- HVAC with bullet resistant shroud fabricated of UL listed bullet resistant Shot-Tex steel
- Roof, walls and optional floor are fabricated from UL listed bullet resistant Shot-Tex steel
- Insulation fills the cavities of the wall, roof and floors.
- Removable lifting eyes for crane handling or underpinning for forklift handling
- Suspended ceiling grid with recessed lighting fixtures
- Electrical work conforms to the National Electrical Code. Floor or roof fed distribution panel with grounded surface mounted duplex receptacles, circuits as needed to supply interior and exterior power requirements.
- One continuous stainless steel counter

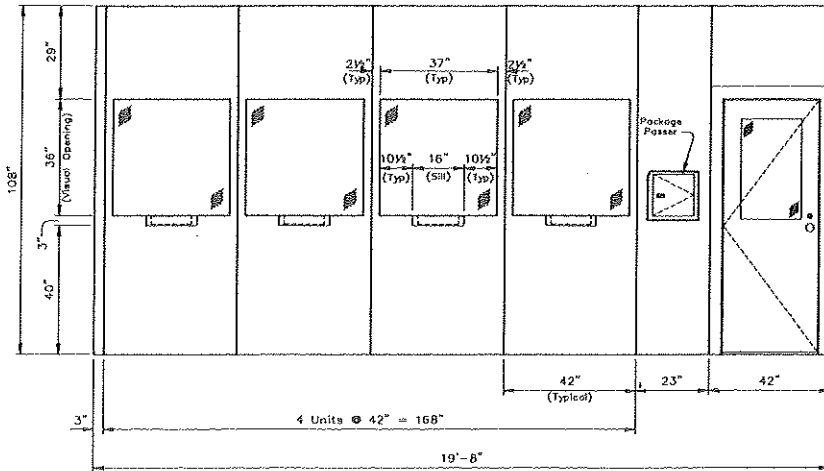
OPTIONS

- PP PACKAGE PASSER - See standard data sheet.
- GP3 OR GP4 GUNPORT - See standard data sheet.
- LOUVRE - See standard data sheet.
- CUSTOM SHROUDS FOR HVAC AND AND ELECTRICAL OR PLUMBING PENETRATION.

CUSTOM-BUILT UNITS AVAILABLE.

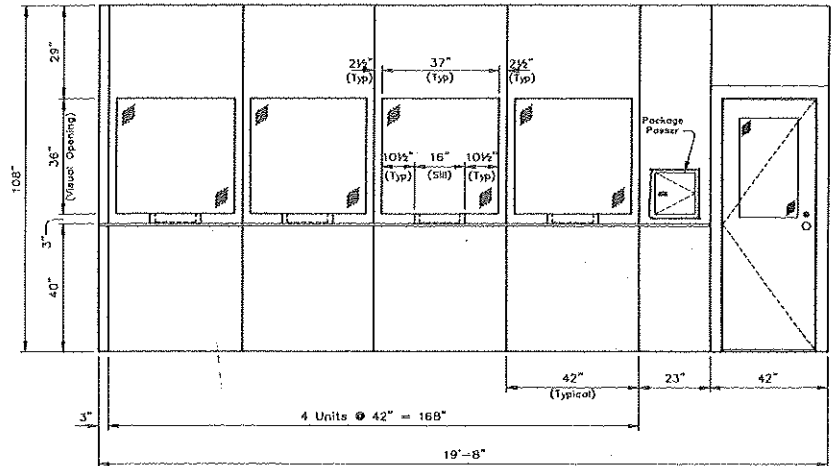
CX

BULLET-RESISTING PANELIZED CHECK CASHING SYSTEM



Customer Store Front
(20' - 0" Nominal Store Front)

Customer Store Front
Optional Counter Shown
(20' - 0" Nominal Store Front)



APPLICATIONS/BENEFITS

Chicago Bullet Proof's CX Check Cashing System is a fully enclosed modular bullet-resisting assembly that provides protection from armed robbery or intrusion. Installations of the modular system are found in check cashing facilities, currency exchanges, credit unions and financial institutions.

The design of the prefabricated panel system allows for several key features:

- Rapid, on-site installation.
- Interchangeable panels to suite any floor layout.
- Flexibility in panel arrangement.
- Clean, flush appearance.
- Safe and secure enclosure.
- High quality materials that resist abuse and allow low-cost maintenance.
- Quick ordering and implementation.
- Applicable for retrofit or new construction.

**Chicago
Bullet Proof**

METALTEK FABRICATING, INC.
d/b/a CHICAGO BULLET PROOF SYSTEMS
2595 BOND ST.
UNIVERSITY PARK, IL 60484

Four panel configurations are available: flush panel, vision panel, teller window panel, and door panel. Options such as counterwork extending the full width of the modular system (on one or both sides), cash drawers, and package passer units are available. Two examples of a typical straight wall layout of a hardened check cashing facility are shown above.

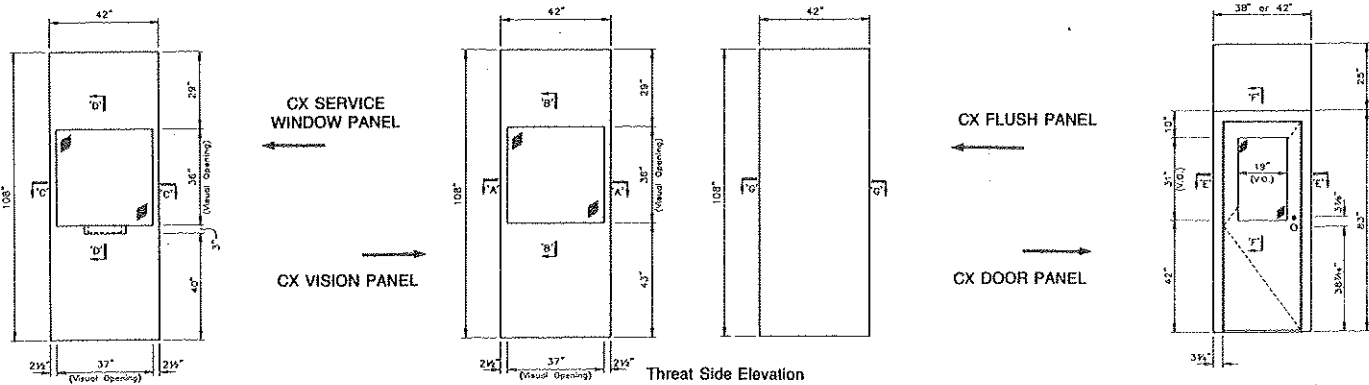
CODE COMPLIANCE

The materials used in the assembly of each CX panel are listed by Underwriters' Laboratories, Inc. as being bullet-resisting in accordance with *Standard for Safety UL 752* for the Super Power Small Arms (SPSA) ballistic level. This covers .44 Magnum Revolver handguns.

PANEL CONSTRUCTION

Each partition is constructed from Chicago Bullet Proof's brand of certified Shot-Tex® #11 bullet-resisting steel in an "all welded" assembly. This type of construction forms a double wall of steel, with a layer facing the threat side and another facing the inside of the enclosure. Each has a depth of 3".

CX BULLET-RESISTING PANELIZED CHECK CASHING SYSTEM



CX SERVICE AND VISION PANELS

■ TRANSPARENT ARMOR

The CX Teller and Vision Window Panels contain UL Listed bullet-resisting transparent armor, 1 $\frac{3}{4}$ " thick. (CBP does not factory glaze the CX panel; this is the responsibility of the installer.) The transparent armor is secured into each panel by a formed glazing stop bolted to the interior access cover with pan head screws at 8" O.C. Chicago Bullet Proof provides acoustic rubber spacers for seating transparent armor into panel.

■ DEAL TRAY

The CX Service Panels are used for transacting smaller items through the UL Listed top-of-counter deal tray, 12 $\frac{3}{4}$ " in width x 1 $\frac{1}{2}$ " in height. The CX Service Window panels feature an acoustically balanced voice transmission system that is enhanced by openings in the deal tray and between the rubber spacers. The deal tray is satin stainless steel #3 throughout.

CX FLUSH PANEL

CBP provides the Flush Panel for areas where more privacy is required or where conditions for a solid panel is best suited. It is an opaque panel constructed of Shot-Tex #11 bullet-resisting steels.

DOOR PANEL

The CX system comes equipped with an entrance door panel constructed from Shot-Tex #11 bullet-resisting steels. The door frame has a single rabbet profile 2 $\frac{1}{8}$ " x 3" and includes the following hardware components and related items:

- Sargent 7704 mortise lockset x OB trim x US26D (dull chrome) finish.
- Heavy duty closer in sprayed aluminum finish.
- CBP #12252 bullet-resisting continuous hinge.
- Glynn-Johnson #64 silencers.
- 19" x 31" vision panel of UL Listed bullet-resisting glass, SPSA ballistic level, 1 $\frac{3}{4}$ " thick, factory glazed.

PACKAGE PASSER

To accommodate commercial customers, the CX Package Passer (PP) is available for transferring currency bags and other items too large for passage through the deal tray. The PP units have vertically hinged, mechanically interlocking doors which are controlled by the teller. This means that only one door can be opened at a time, assuring a layer of armor is between the employee and the public at all times.

- UL certified to meet the SPSA threat level.
- Clear inside capacity of 14 $\frac{3}{8}$ " wide x 11 $\frac{1}{2}$ " high x 12 $\frac{5}{8}$ " deep.
- Constructed from Shot-Tex #11 bullet resisting steel.
- Standard flat black painted finish, optional stainless steel front door.
- Heavy duty continuous hinge on both doors.
- Exterior door utilizes a formed satin stainless steel pull, LHRB swing.
- Interior door uses a three position control handle, brushed finish, LH swing.

SYSTEM ASSEMBLY

The panels are connected by bolts at intervals of 16" O.C. A formed guard angle consisting of Shot-Tex #1 steel at each bolt connection is attached to maintain the ballistic resistance. A 3" wide removable steel access plate is applied by hook and loop ("Velcro") type fasteners on the interior of the adjoining panels to conceal the bolt connections. CBP will also provide corner posts for two or more sided conditions that bolt to adjacent panels.

Once assembled, the system is attached to the existing floor surface with the included floor anchors. The modular panels are attached to the ceiling structure for one or two sided applications (i.e. between two existing walls) through the use of a top support angle. For three-sided free-standing applications, CBP will supply a hardened ceiling mounted to a ceiling support angle attached to the interior panel structure.

FINISH

After Fabrication and prior to fitting door panel for lockset, each panel is degreased using a phosphate wash. All imperfections are filled, the welds are ground smooth and each CX component is spray painted with a rust-inhibiting semi-gloss light grey primer.

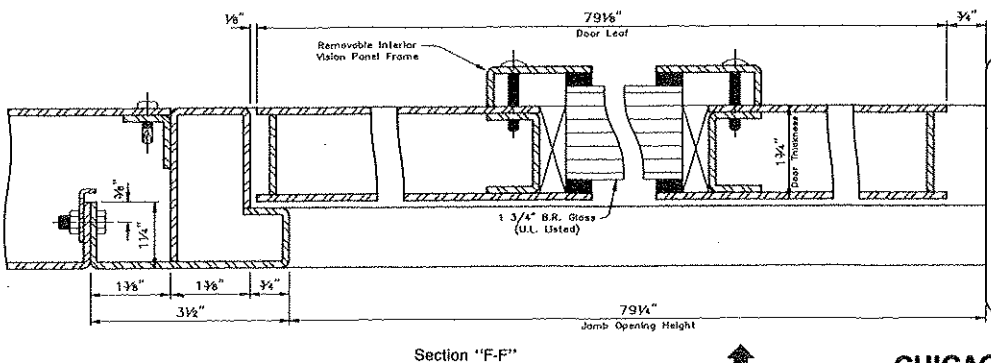
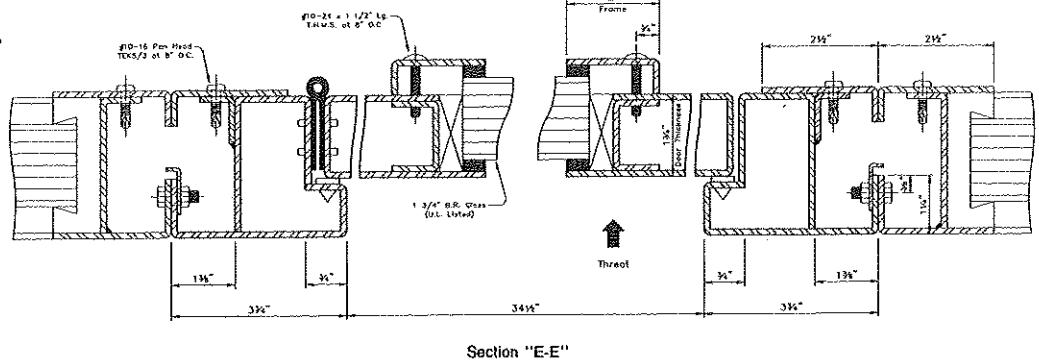
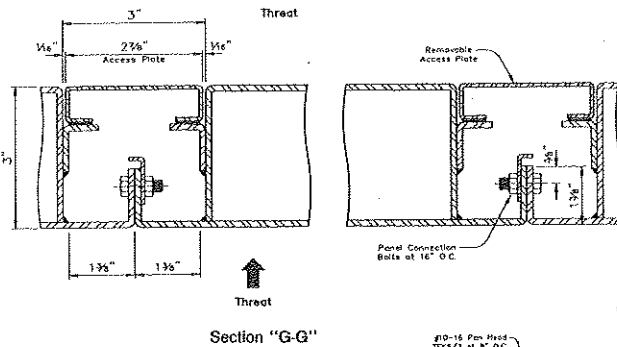
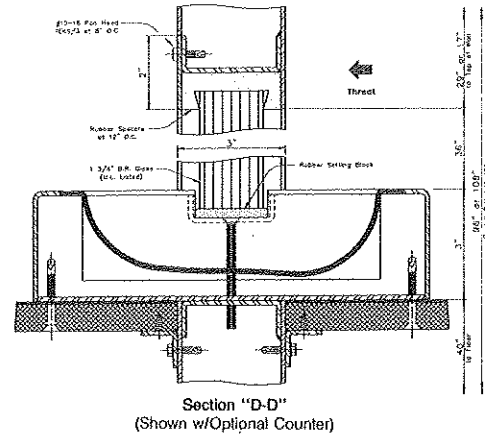
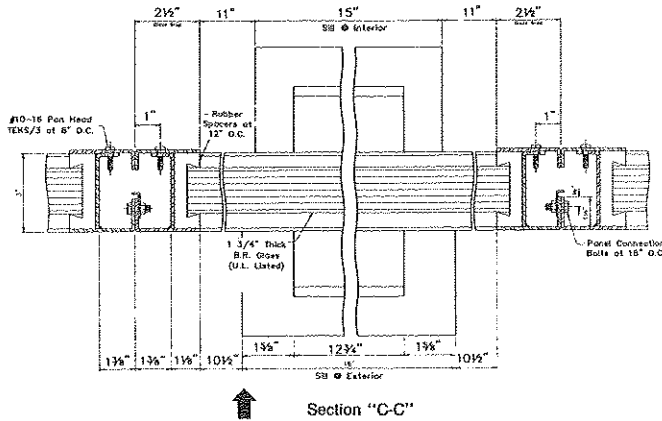
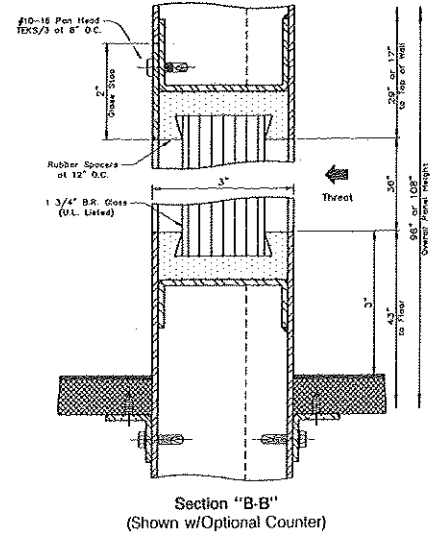
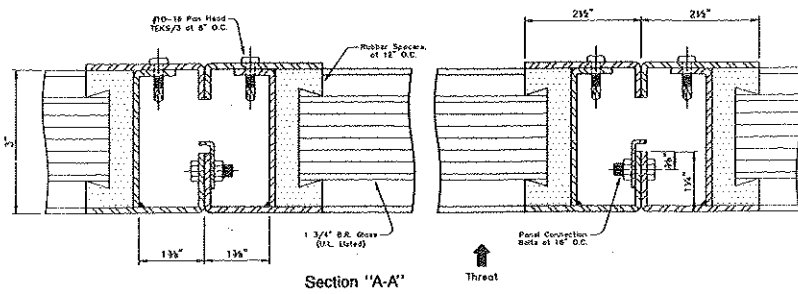
STANDARD SIZES

Panels are available in standard sizes of 42" wide x 96" or 108" high.

PANEL MODE	O.A. SIZE	PANEL WEIGHT (LBS.)
Vision Panel	42" x 96"	610
	42" x 108"	650
Service Panel	42" x 96"	640
	42" x 108"	680
Flush Panel	42" x 96"	460
	42" x 108"	500
Door Panel	38" x 96"	425
	42" x 96"	460
	38" x 108"	465
	42" x 108"	500
Corner Post	3" x 96"	60
	3" x 108"	65
Ceiling Support Angle	Varies	4 #/LF
Ceiling Panels	Varies	8 #/SF

**Chicago
 Bullet Proof
 Systems**

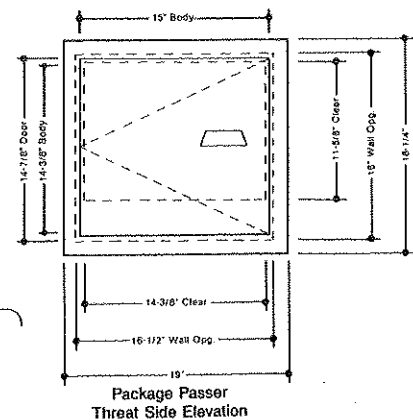
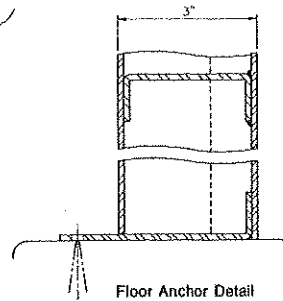
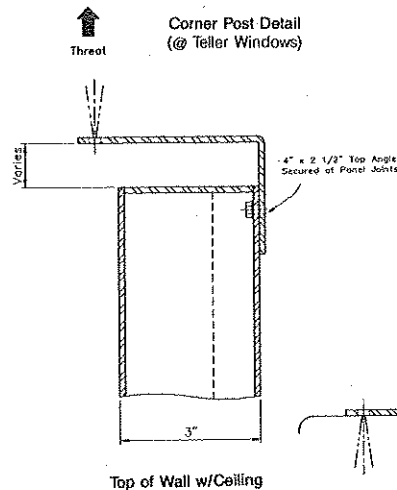
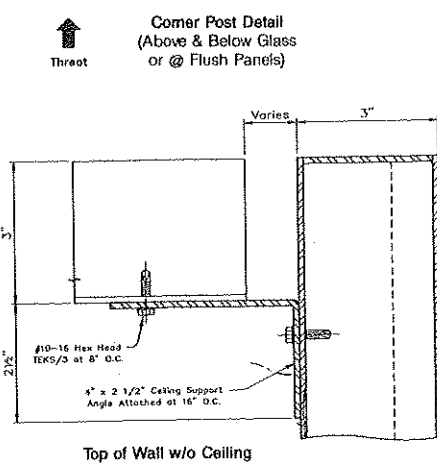
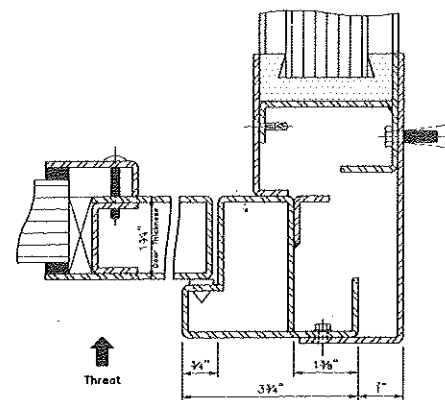
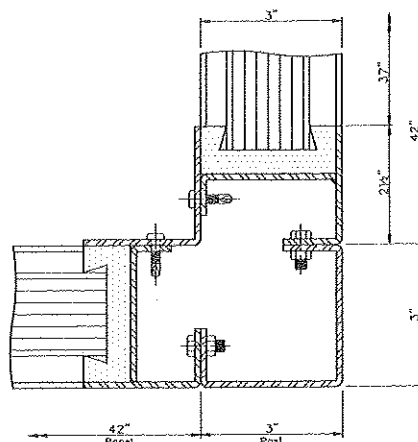
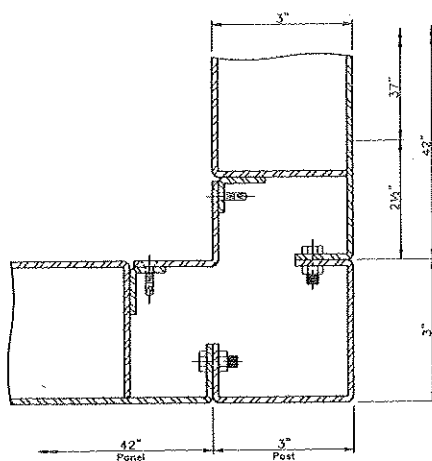
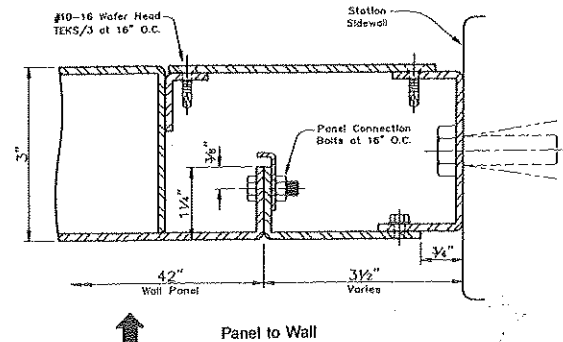
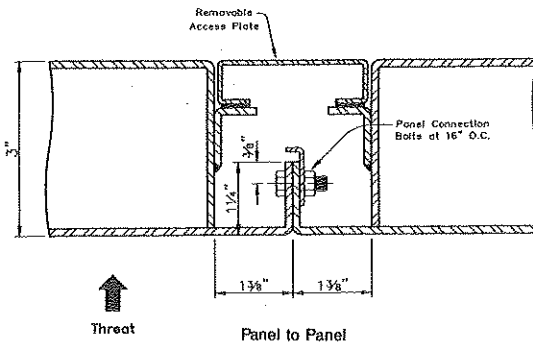
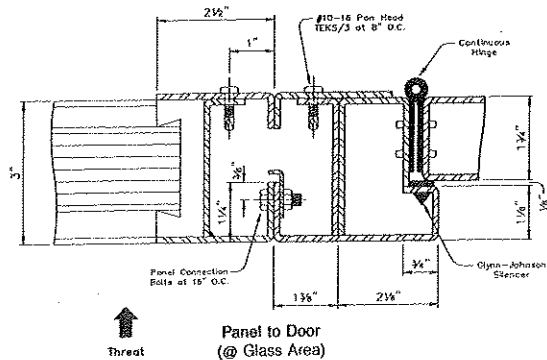
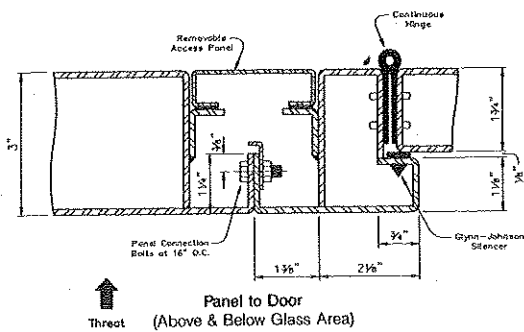
CX BULLET-RESISTING PANELIZED CHECK CASHING SYSTEM



**Chicago
Bullet Proof
Systems**

METALTEK FABRICATING, INC.
d/b/a CHICAGO BULLET PROOF SYS
2595 BOND ST.
UNIVERSITY PARK, IL 60484

CHICAGO



**Chicago
Bullet Proof
Systems**

METALTEK FABRICATING, INC.
d/b/a CHICAGO BULLET PROOF SYSTEMS
2595 BOND ST.
UNIVERSITY PARK, IL 60484