



High Quality Sliding Door Hardware

1. Product Name

■ CaviLock® CL100 Mortise Lock

- CL100™ ADA LaviLock
- CL100™ ADA Lever
- CL100™ Lever
- CL100™ Flush Turn

2. Manufacturer

Cavity Sliders USA Inc.
15537 S Broadway Center Street
Gardena, CA 90232

Phone: 888-466-0030

Fax: 310-769-5824

Email: info@cavilock.com

Web: www.cavitysliders.com

3. Product Description

Basic Use

CaviLock® CL100 Mortise Lock

The CaviLock CL100 Series is a versatile mortise lock for sliding doors and pocket doors in commercial applications. Designed for interior and exterior use, CaviLock CL100 Series Mortise Locks are used for both wood and aluminum doors and can be combined with a selection of CL100 Series levers and turns:

- CL100 ADA LaviLock
- CL100 ADA Lever
- CL100 Lever
- CL100 Flush Turn

CL100 ADA LaviLock

CL100 ADA LaviLock is an access lockset designed in accordance with ADA Accessibility Guidelines for Buildings and Facilities. A lever-operated mechanism and slide locking button allow easy access for those with limited mobility. Indication plates feature an easy-to-read Vacant/In Use indicator. The door is locked by pushing down the slide locking button and is unlocked and opened in a single action by pulling the lever handle.



CL100 ADA LaviLock



CL100 ADA Lever

CL100 ADA LaviLock is offered as a set that includes CL100 Mortise Lock case, two lever handles, two stainless steel indication plates (inside and outside) and a slide locking button with an emergency release.

CL100 ADA Lever

The CL100 ADA Lever combines a CL100 Mortise Case with a lever handle and ADA privacy turn for easy entry and exit. Specifically designed for sliding doors, the ADA turn can be operated without tight pinching, grasping or twisting of the wrist, and the vertical lever grip permits a positive pull action on heavy doors.

CL100 Lever

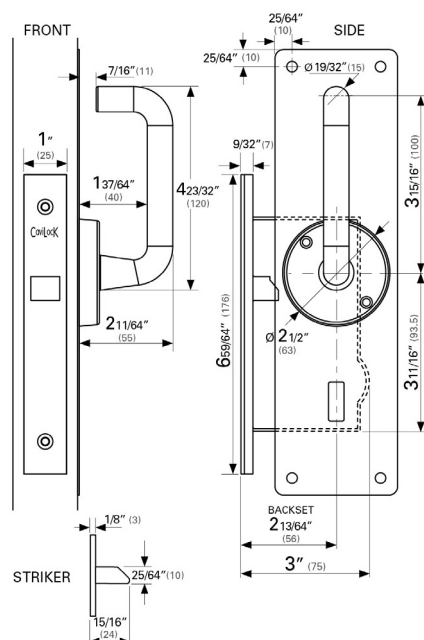
The CL100 Lever is a robust handle designed to blend easily with existing commercial handles and locks. Available with Euro Profile cylinder and Schlage® C commercial keying, the CL100 Lever is the most popular side handle for the CL100 Mortise Lock. The vertical lever grip allows a positive pull action on heavy doors.

CL100 Flush Turn

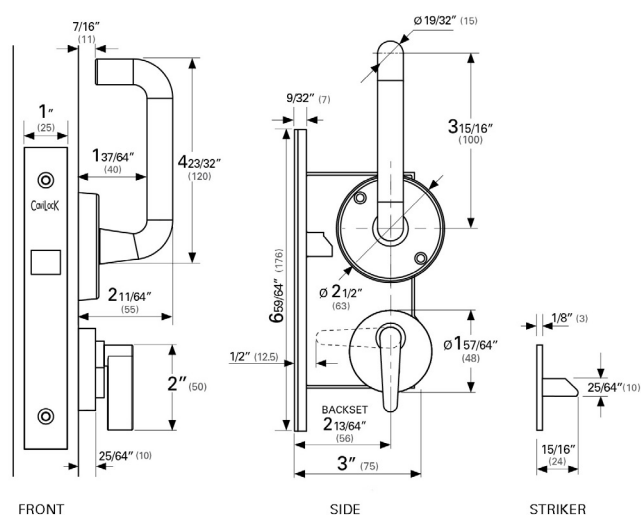
The CL100 Flush Turn is a flush, built-in edge pull for pocket doors. The CL100 Flush Turn allows the doors to slide fully into the pocket without interference from the door handle. A flush, built-in edge pull gives access to the door once inside the pocket. The shallow fitting depth and positive turn make this side handle suitable for locking and non-locking applications. Euro Profile cylinder with Schlage C keyway is available.

Table 1- Technical and Physical Properties

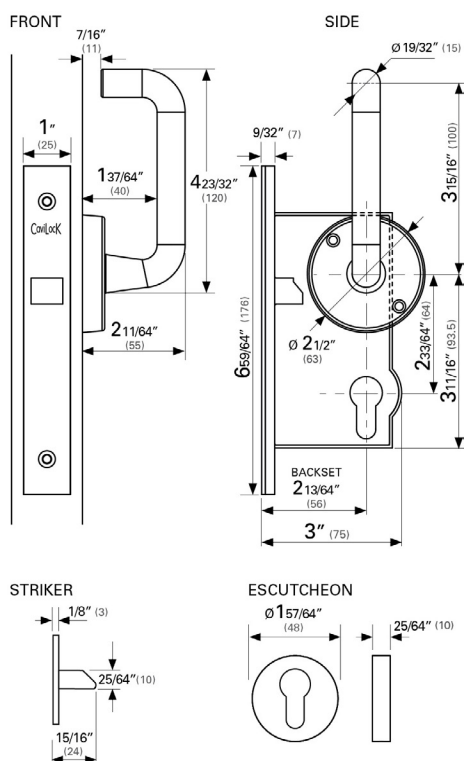
CL100 ADA Lavilock



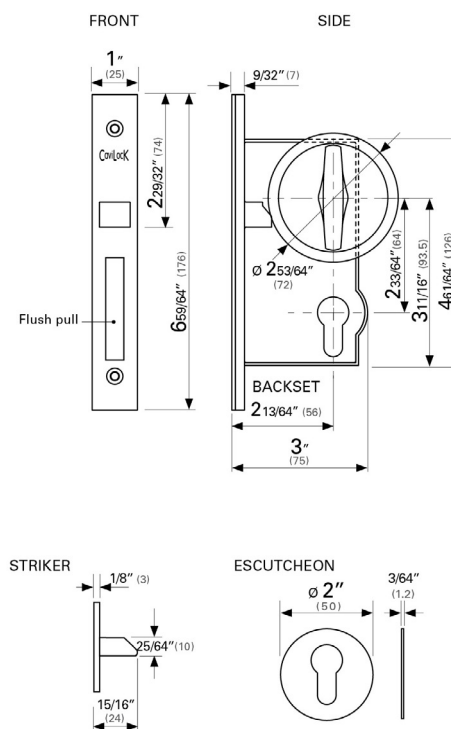
CL100 ADA Lever



CL100 Lever



CL100 Flush Turn





CL100 Lever (keyed)

CL100 Flush Turn

Benefits

- Easy to operate
- Robust hardware suited for commercial applications
- High quality components for product longevity
- Designed specifically for pocket and sliding doors
- Egress-free options available
- Vacant/In Use indication [Lavilock only]

Limitations, Restrictions

- Not suited for installation in areas with exposure to corrosive environments such as high chlorine or salt concentration
- Flush Turn requires a minimum 1 1/2" (37 mm) door thickness
- For ADA products, hardware must be mounted no higher than 48 inches (1220 mm) above the finished floor, and the clear width of the door opening must be a minimum of 32 inches (815 mm) for the accessible door passage to meet ADA guidelines.
- The door will protrude 4 inches (100 mm) from the pocket to allow clearance for hardware. Take this measurement into account when planning the 32 inch clear walk-through for the opening. The suggested minimum door width for a pocket door is 37 inches

Composition and Materials

- Case: Diecast zinc
- Faceplate and striker: Brushed stainless steel
- Internal parts: Bronze and brass
- Screws, springs, other fasteners: Stainless steel or steel
- Lavilock indication plates: Stainless steel
- Lever handle: Brass
- Cylinders: Euro profile cylinder with American Schlage C commercial keyway, keyed alike or keyed to differ

Sizes, Dimensions

- Mortise case: 3" x 6 59/64" x 1" (75 x 176 x 25 mm)
- Backset: 2 13/64" (56 mm)
- Face plate: 1" x 6 59/64" (25 x 176 mm)
- Lever rose Ø: 2 1/2" (63 mm)
- Flush turn Ø: 2 53/64" (72 mm)
- Escutcheon Ø: 2" (50 mm)
- See Table 1

Color, Finish

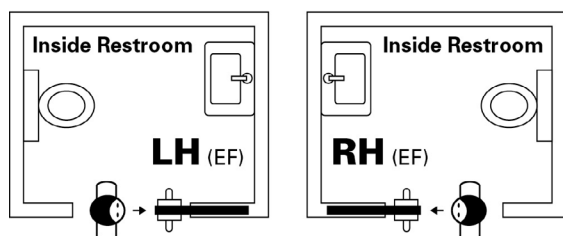
Satin chrome is standard.

Accessories, Options

- Keyed entry (CL100 Lever, CL100 ADA and CL100 Flush Turn only)
- CL100 Lever
 - Key/Key
 - Key/Turn
 - Key one side
 - Lever only
 - Turn/Emergency
 - Keyed alike or keyed to differ
 - Case is not handed (reversible cylinder)
- CL100 ADA
 - One side keyed plus ADA turn
 - Emergency release plus ADA turn
 - Keyed alike or keyed to differ
 - Case is not handed (reversible cylinder)
- CL100 Flush Turn
 - Both sides keyed
 - One side keyed
 - Flush turn only
 - Keyed alike or keyed to differ
 - Case is not handed (reversible cylinder)

- CL100 ADA LaviLock
 - Right/left handing

The CL100 LaviLock is handed and handing must be specified at time of order.



When standing looking into the pocket, if the locking snib is on your **left hand** side then the LaviLock is a Left Hand lock.

When standing looking into the pocket, if the locking snib is on your **right hand** side then the LaviLock is a Right Hand lock.

EF = Egress Free - Even when in locked position the handle on the **inside** remains unlocked.

4. Technical Data

Applicable Standards

Environmental Considerations

Steel, brass and zinc hardware products are renewable and recyclable resources and may contribute points toward LEED® project certification. Cavity Sliders USA uses environmentally friendly material in its packaging where available.

Physical Properties

See Table 1.

5. Installation

Installation instructions and cutting templates are included with products and are available online at www.cavitysliders.com. Installation videos are available at www.cavitysliders.com/videos.

6. Availability and Cost

For availability and pricing within a specific region, consult a local dealer or visit www.cavitysliders.com/resellers.

7. Warranty

Warranty statements are online at www.cavitysliders.com/downloads.

8. Maintenance

Follow the manufacturer maintenance instructions available online at www.cavitysliders.com/downloads.

9. Technical Services

Technical assistance, including detailed information, product literature, project lists, assistance in preparing project specifications and supervision is offered by the manufacturer. For questions about specifications, code regulations, product usage or product installation, visit www.cavitysliders.com.

10. Filing Systems

- CMD
- Additional product information is available from the manufacturer upon request ↗



High Quality Sliding Door Hardware

1. Product Name

■ Cavilock® CL400 Magnetic Pocket Door Hardware

2. Manufacturer

Cavity Sliders USA Inc.
15537 S Broadway Center Street
Gardena, CA 90232
Phone: 888-466-0030
Fax: 310-769-5824
Email: info@cavilock.com
Web: www.cavitysliders.com

3. Product Description

Basic Use

CL400 Magnetic Pocket Door Hardware is a line of modern, high quality hardware developed specifically for pocket and sliding doors. The CL400 offers a full range of functionality for new construction, retrofit and renovation projects. Its positive-hold close action ensures the door connects soundly to the closing jamb and prevents the door from rolling open — whether or not the snib privacy sliding button is engaged. The CL400 is available in passage, privacy, key locking and bi-parting (double door) versions for doors 1 3/8" to 2 1/4" thick.

Types

Passage Latching and Non-latching

The CL400 is a stylish architectural passage handle that features a positive-hold close action to ensure the door connects soundly to the closing jamb. Magnetic and non-magnetic versions are available.

Privacy

CL400 privacy hardware features a magnetic latching feature that holds the door in place until the snib is activated. It is available with the snib on both sides, on one side or with an emergency release.

Key Locking

CL400 Key Locking hardware is engineered for interior residential and light commercial applications requiring medium security. Available keyed on both sides, key on one side or with key/snib, the lock includes a single or double Euro Profile cylinder and Schlage® C keyway.



Bi-parting (Double Doors)

The CL400 Bi-parting set is designed for double doors that meet in the middle. A positive hold-close action brings the doors together and holds them in place. It is available as a passage latching set, privacy snib/snib or snib emergency, snib/key or keyed on both sides.

Composition and Materials

- Chassis: Machined aluminum
- Side handle and striker: Pressure diecast zinc
- Face plate, back plate: Electroplated solid brass
- Internal parts: Pressure diecast zinc, injection molded plastic, electroplated steel
- Snib button: Electroplated pressure diecast zinc
- Cylinder: 3–7 pin Euro Profile, depending upon door thickness
- Magnet: Neodymium rare earth magnet

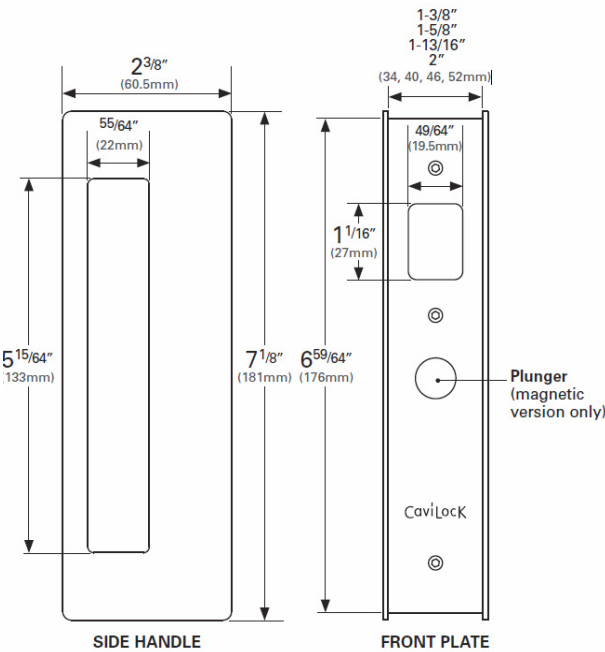
Sizes

- Side handle: 2 3/8" x 7 1/8" (60.5 x 181 mm)
- Face plate width: 1 3/8", 1 5/8", 1 13/16", 2" (34, 40, 46, 52 mm)
- Privacy striker: 1 17/64" x 3 5/32" x 15/32" (32 x 80 x 12 mm)
Passage striker: 1 17/64" x 3 5/32" x 23/64" (32 x 80 x 9 mm)
- Door thicknesses: Available with a choice of face plates for doors 1 3/8" to 2 1/4"

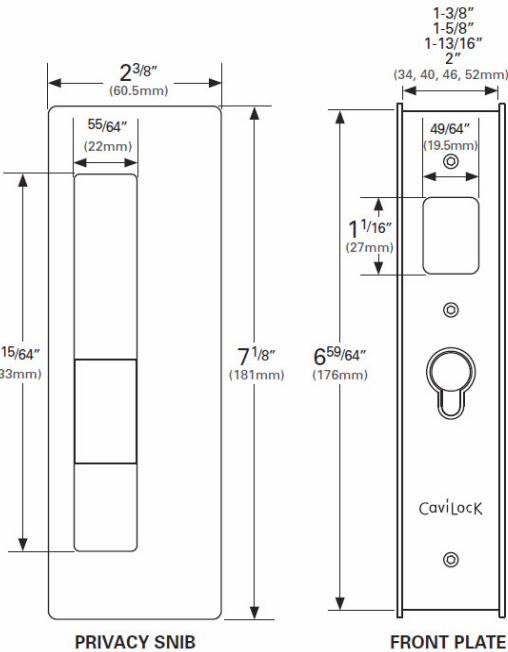
Colors, Finishes

- Satin Chrome (26D)
- Matte Chrome
- Bright Chrome (26)
- Satin Nickel (15)
- Oil Rubbed Bronze (10B)
- Special finishes are available upon request

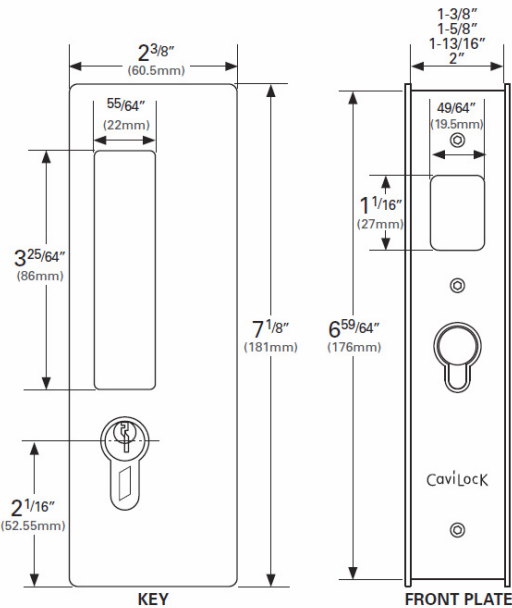
Table 1 – Physical Properties



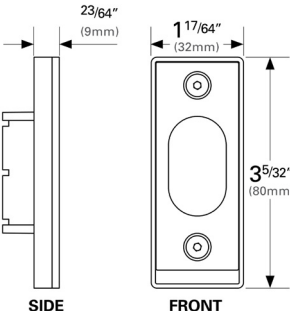
Passage



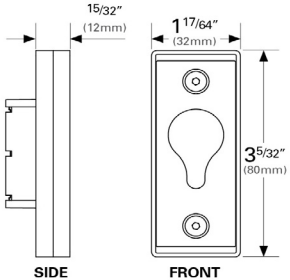
Privacy



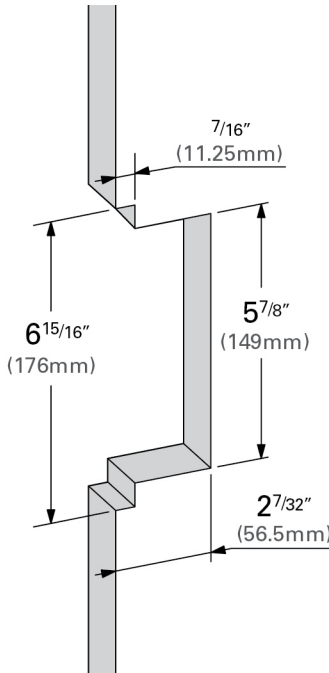
Key Locking



Flush Striker
(Passage handles)



Recessed Striker
(Privacy/key locking handles)



Door Cutout

Benefits

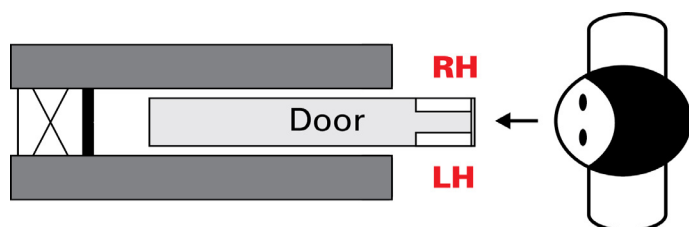
- Versatile selection for a variety of commercial and residential applications
- Patent-pending plunger action for positive-hold close
- Easy to fit and easy to install handles require no on-site alteration
- Quality engineered components
- Designed for pocket doors
- Finger hole for easy door retrieval from the pocket

Limitations, Restrictions

- The CL400 is not suitable for installation in areas exposed to corrosive environments such as high chlorine or salt concentration
- The CL400 is not suitable as a secure exterior lock
- Warning: The striker contains a strong magnet. Information for safe handling will be included in the manufacturer's installation instructions

Options

- Passage
 - Magnetic latching
 - Non-magnetic latching
- Privacy
 - Snib one side
 - Snib both sides
 - Snib/emergency release
- Key Locking
 - Key one side
 - Key both sides
 - Key/snib
 - Single or double Euro Profile cylinder with Schlage C keyway
- Bi-parting (double doors)
 - Passage latching set
 - Privacy snib/snib
 - Snib/emergency release
 - Snib/key
 - Key/key
- Left or right handing



Note: Handing is determined at the time of manufacture and cannot be altered on-site.

4. Technical Data

Environmental Considerations

Steel, brass and zinc hardware products are renewable and recyclable resources and may contribute points towards Leed® project certification. Cavity Sliders USA Inc. uses environmentally friendly material in its packaging where available.

Physical Properties

See Table 1.

5. Installation

Installation instructions and cutting templates are included with products and are available online at www.cavitysliders.com.

Installation videos are also available at www.cavitysliders.com/videos.

6. Availability and Cost

For availability and pricing within a specific region, visit www.cavitysliders.com/resellers.

7. Warranty

Warranty statements are online at www.cavitysliders.com/downloads.

8. Maintenance

Follow the manufacturer maintenance instructions available online at www.cavitysliders.com/downloads.

9. Technical Services

Technical assistance, including detailed information, product literature, project lists, assistance in preparing project specification and supervision is offered by the manufacturer. For questions about specifications, code regulations, product usage or product installation, visit www.cavitysliders.com.

10. Filing Systems

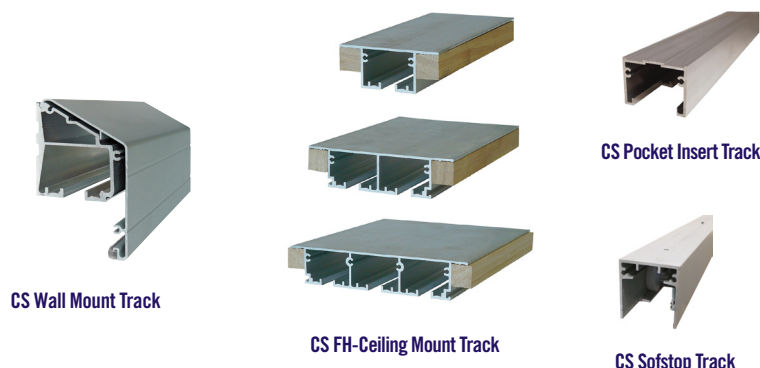
- CMD
- Additional product information is available from the manufacturer upon request ↗



High Quality Sliding Door Hardware

1. Product Name

- CS FH-Ceiling Mount Track™
- CS Pocket Insert Track™
- CS Wall Mount Track™
- CS Carriage Packs
- CS SofStop™ Pocket Insert Track



2. Manufacturer

Cavity Sliders USA Inc.
15537 S Broadway Center Street
Gardena, CA 90232
Phone: 888-466-0030
Fax: 310-769-5824
Email: info@cavilock.com
Web: www.cavitysliders.com

3. Product Description

Basic Use

CS Track Systems are a line of high quality track and carriage systems for sliding doors. Suitable for new construction and retrofit, the track systems are engineered for commercial and residential construction.

CS FH-Ceiling Mount Track

CS FH-Ceiling Mount Track is a flush track for full height, floor-to-ceiling doors. The track includes full length timber spacers that allow the underside of the track to sit flush with the ceiling. Available in single, double and triple configurations, CS FH-Ceiling Mount Track can be used for bi-parting (double) door set-ups, including corner meeting.

CS Pocket Insert Track

CS Pocket Insert Track is a high quality, heavy-duty aluminum track for top-mount pocket door frame assemblies. The smooth running, low profile track system is suited for most pocket door frame assemblies and is ideal for custom pocket doors and applications where longevity and smooth function are required.

CS Wall Mount Track

CS Wall Mount Track is a high quality, heavy-duty extruded aluminum track for barn door configurations. It is used for applications where the wall has sufficient strength to support a side track with a door. The track comes with a pre-finished clip-on aluminum fascia and end caps to conceal the top of the door, track and running gear.

CS SofStop Pocket Insert Track

CS SofStop Pocket Insert Track is a smooth running, soft closing system designed specifically for pocket doors. The track must be paired with a SofStop carriage pack containing soft close mechanism, carriages, T guide and track stop. It is available both for single and bi-parting (double) units.

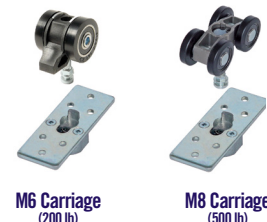
CS Carriage Packs

CS Carriage Packs are used with CS FH-Ceiling Mount, CS Pocket Insert and CS Wall Mount tracks. Available in M6 (200 lb) or M8 (500 lb) configurations, the carriage packs feature a self-centering, adjustable hanger bolt and a Carrisnap™ quick release mounting plate that allows the door to be removed for servicing without altering the door height adjustment. A plastic bumper and track stop combination smoothly bring the door to a halt. Nylon wheels and fully sealed precision bearings ensure smooth operation.

Composition, Materials

CS Track Systems are high quality, heavy-duty 5/64 inch (2 mm) thick extruded aluminum. They are supplied with pre-drilled fixing holes and notched to simplify carriage insertion.

- M6 carriage: steel axle with two 1 3/16 (30 mm) diameter ball-bearing wheels and nylon tires
- M8 carriage: stainless steel body with four 1 3/16 (30 mm) diameter ball-bearing wheels and nylon tires
- SofStop mechanism: Includes four-wheel front carriage with tow bar, SofStop cassette with dolly wheel and four-wheel rear carriage
- Track stop: steel body 1 19/32 × 13/16 × 9/16 inches (40 × 21 × 14 mm) with 13/32 inch diameter (10.5 mm) rubber stop
- Floor guide: 7/8 inch (23 mm) high, black plastic T guide
- Removable fascia (CS Wall Mount Track): 5/64 inch (2 mm) thick extruded aluminum



Sizes, Colors

See Table 1.

Benefits

- Allow doors to slide effortlessly and quietly
- Notched tracks for easy installation and removal of carriages
- High quality, heavy-duty extruded aluminum
- Carriages cannot jump off tracks
- No visible floor guides
- Designed for reliable long-run service

Limitations, Restrictions

- All CS Track Systems require the wall member above or beside to support the full weight of the door
- M6 2-wheel carriages are rated at 200 pounds (91 kg), each pair
- M8 4-wheel carriages are rated at 500 pounds (227 kg), each pair
- M10 carriages, rated at 1000 pounds (454 kg), are available on request and must be combined with extra heavy duty track. Contact Cavity Sliders USA Inc. for information and availability
- For commercial triple track options, CS Pocket Insert Track may be combined with the CS Door Collection System. Contact the manufacturer for information

Table 1 – Technical and Physical Properties

Component	CS Wall Mount Track	CS FH-Ceiling Mount Single Track	CS FH-Ceiling Mount Double Track	CS FH-Ceiling Mount Triple Track	CS Pocket Insert Track	CS SofStop Pocket Insert Track
Standard track finish	Mill	Mill	Mill	Mill	Mill	Clear anodized
Fascia, end cap finish*	Clear or bronze anodized; custom powder coated*	—	—	—	—	—
Door thickness*	1 3/8" to 1 3/4" (35 to 45 mm)	No limit	1 3/8" to 1 3/4" (35 to 45 mm)	1 3/8" to 1 1/2" (35 to 38 mm)	No limit	No limit
Maximum door weight	500 lb (240 kg) with M8	500 lb (240 kg) with M8	500 lb (240 kg) with M8	500 lb (240 kg) with M8	500 lb (240 kg) with M8	176 lb (80 kg)
Minimum door width	No minimum	No minimum	No minimum	No minimum	No minimum	28" (710 mm)
Track height	3 15/16" (100 mm) including fascia	1 27/64" (36 mm)	1 27/64" (36 mm)	1 27/64" (36 mm)	1 15/32" (37.5 mm)	1 13/16" (46 mm)
Track width	2 13/64" (56 mm) including fascia	3 35/64" (90 mm)	5 1/2" (140 mm)	7 1/2" (190 mm)	1 31/32" (50 mm)	1 31/32" (50 mm)
Track length*	Up to 16' (4877 mm)	Up to 16' (4877 mm)	Up to 16' (4877 mm)	Up to 16' (4877 mm)	Up to 24' (7315 mm)	Up to 8' (2438 mm)
Brush seals	Yes	No	No	No	No	No
Carriage type	M6, M8	M6, M8	M6, M8	M6, M8	M6, M8	SofStop
* Contact Cavity Sliders USA Inc. for custom options and colors						

Accessories, Options

- CS Door Collection System connects doors and eliminates the need for floor tracks or guides through the opening. It is available for double or triple door configurations

4. Technical Data

Applicable Standards

Deutsches Institut für Normung (DIN)

- DIN EN 15706 Hardware for furniture – Strength and durability of slide fittings for sliding doors and roll fronts; German version

Environmental Considerations

Aluminum track systems are renewable and recyclable resources and may contribute points towards LEED® project certification.

Physical Properties

- See Table 1.
- The CS SofStop mechanism has been tested in accordance with DIN EN 15706 to 100,000 cycles at 80 kg.

5. Installation

Installation instructions are included with products and are available online at www.cavitysliders.com/downloads.

Installation videos are available at www.cavitysliders.com/videos.

6. Availability and Cost

For availability and pricing within a specific region, please visit www.cavitysliders.com/resellers.

7. Warranty

Warranty statements are online at www.cavitysliders.com.

8. Maintenance

CS Track Systems require a clean track running surface free of any contamination or damage.

For smooth, reliable service, carriage tires should not be chipped, dented or have swarf embedded in the tire. Care must be taken to avoid any damage during the installation process.

9. Technical Services

Technical assistance, including detailed information, product literature, project lists, assistance in preparing project specification and supervision is offered by the manufacturer. For questions about specifications, code regulations, product usage or product installation, visit www.cavitysliders.com.

10. Filing Systems

- CMD
- Additional product information is available from the manufacturer upon request ↩

Preparing Track for Top Coat

When preparing track for top coat, CS recommends the use of Rust-Oleum® Self Etching Primer. This has been tested on our product in our warehouse and is readily available nationwide. Other self etching primers may be used but we recommended that you test first. Use the appropriate color primer for the top coat color you intend to use.

RUST-OLEUM®

Self Etching Primer - Technical Data Sheet

DESCRIPTION AND USES

Rust-Oleum® Self Etching Primer is designed to prepare bare metal, aluminum and fiberglass surfaces to promote maximum adhesion and smoothness of the topcoat finish. Self Etching Primer is a rust preventive coating that etches and primes in one coat. Self Etching Primer features an advanced spray system that allows you to spray at any angle, even upside down for those hard to reach areas. A comfort spray tip with a wider finger pad reduces fatigue caused by continuous spraying.

PRODUCT APPLICATION

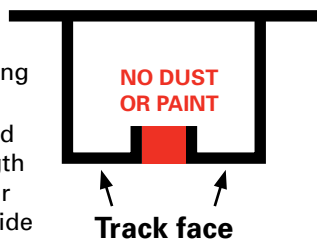
PAINTING CONDITIONS - Use outdoors or in a well ventilated area such as an open garage. Use when temperature is between 50-90°F (10- 32°C) and humidity is below 85% to ensure proper drying. Do not apply to surfaces that, when heated, exceed 200°F (93°C) or galvanized metal. Avoid spraying in very windy and dusty conditions. Cover surrounding area to protect from spray mist.

SURFACE PREPARATION - Thoroughly clean the area to be primed with mineral spirits to remove all oil, grease, wax and dirt. Allow the surface to dry thoroughly. Lightly sand the surface with #400 grit wet or dry sandpaper. Keep the sandpaper wet by soaking it in water while sanding. Wipe the sanded surface clean when finished.

IMPORTANT!

Extra care **must** be taken when sanding and painting the track face.

Cover the gap highlighted red along the whole length of the track so **NO** dust or paint overspray goes inside the track.



The technical data and suggestions for use contained herein are correct to the best of our knowledge, and offered in good faith. The statements of this literature do not constitute a warranty, express, or implied, as to the performance of these products. All technical information is subject to change without notice.

APPLICATION - Shake can vigorously for one minute after the mixing ball begins to rattle. If mixing ball fails to rattle DO NOT STRIKE CAN. Contact Rust-Oleum. Shake often during use. Hold can 12-16" from surface and spray in a steady back-and-forth motion, slightly overlapping each stroke. Keep the can the same distance from the surface and in motion while spraying. For best adhesion, apply 2 or 3 thin coats and allow each coat to dry for 2 minutes before applying the next coat. Allow the final coat of Self Etching Primer to dry for a minimum of 3-4 hours before dry sanding, or 15 minutes before wet sanding with #400 grit sandpaper. Do not use near open flame.

DRY & RECOAT - Dry and recoat times are based on 70°F (21°C) and 50% relative humidity. Allow more time at cooler temperatures. Dries to the touch in 10 minutes and to handle in 15-30 minutes. Apply a top coat after 30 minutes.

CLEAN-UP - Wipe off tip when finished. Clean up wet paint with xylene or mineral spirits. Properly discard empty container. Do not burn or place in home trash compactor.

CLOGGING - If the valve clogs, twist and pull off spray tip and rinse in a solvent such as mineral spirits. Do not insert any object into can valve opening.

PHYSICAL PROPERTIES

SELF ETCHING PRIMER		
Resin Type	Modified Alkyd	
Pigment Type	Titanium Dioxide and Inorganic Pigments	
Solvents	Acetone and Aromatic Hydrocarbons	
MIR	1.20 Max	
Fill Weight	12 ounces	
Recommended Dry Film Thickness (DFT) Per Coat	1.5-2.5 mils (37.5-62.5µ)	
Practical Coverage at Recommended DFT	10-12 sq. ft./can (0.90-1.09 m2/can)	
Dry Times at 70°F (21°C) and 50% Relative Humidity	Touch	10 minutes
	Handle	15-30 minutes
	Topcoat	After 30 minutes
Dry Heat Resistance	200°F (93°C)	
Shelf Life	5 years	
Flash Point	-156°F (-104°C)	
Safety Information	For additional information, see MSDS	