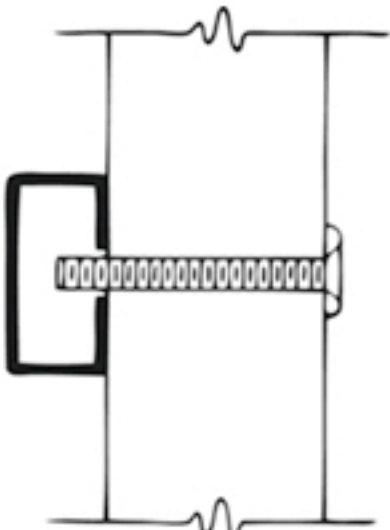


# Burns Mounting Options

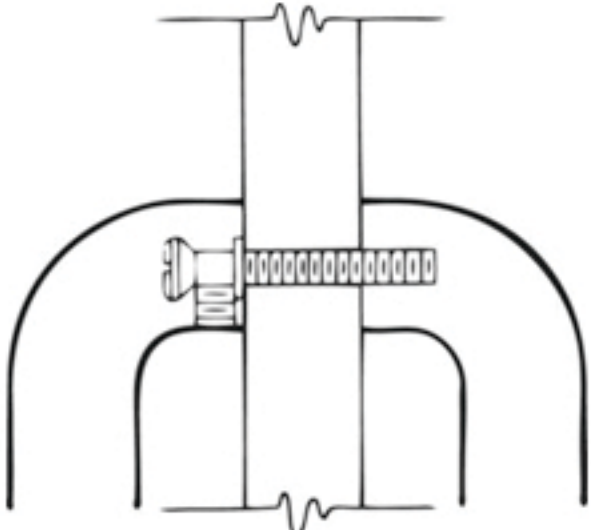
Type 1HD



**Heavy Duty Thru Bolt with Finish Washer**

Size: 3/8-24 × 2-1/2" TB w/ Finish Washer  
Use for Door Pulls and Push Bars

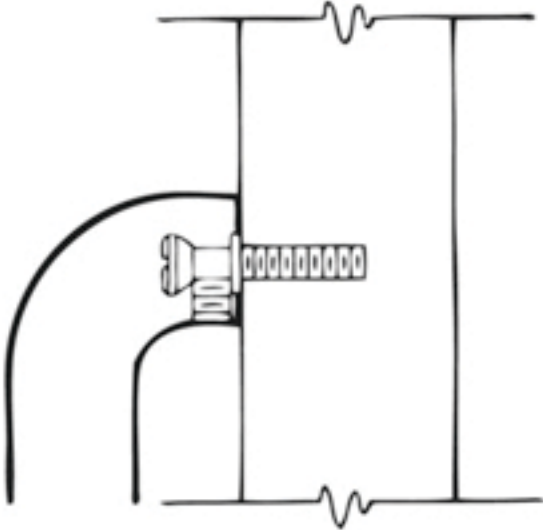
Type 5HD



**Heavy Duty Back to Back Mounting**

Size: 3/8-24 × 2-1/2" Conehead  
Use for Door Pulls and Push Bars

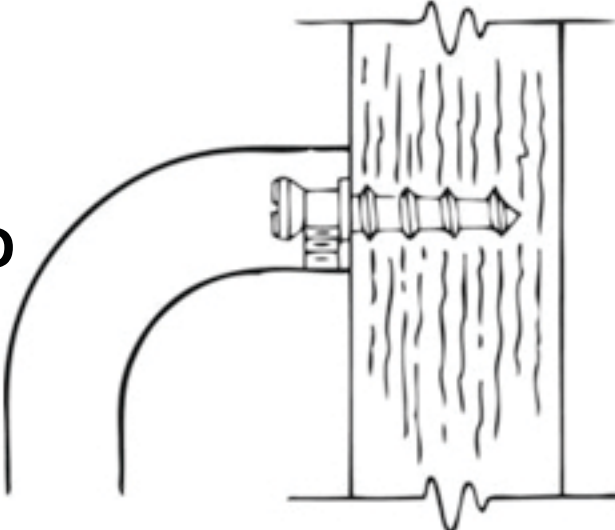
Type 6HD



**Heavy Duty Concealed Mounting on metal door**

Size: 3/8-24 × 1" Conehead  
Use for Metal Door Pulls and Push Bars - tap door for 3/8-24 thread

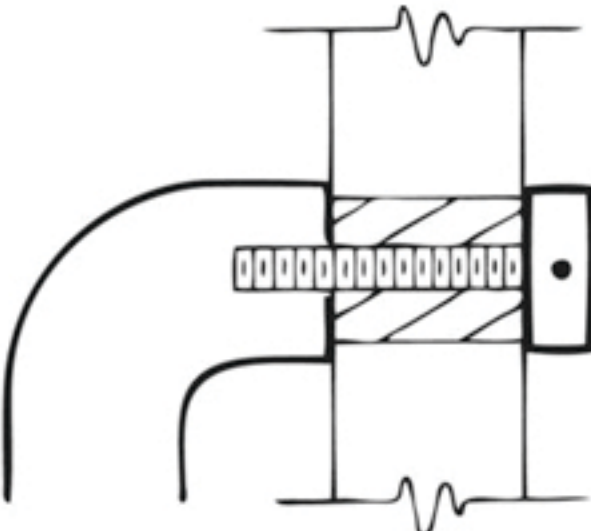
Type 7HD



**Heavy Duty Concealed Mounting on wood door**

Size: 3/8-24 Conehead w/ #14 × 1-1/2" Wood Screw  
Use for Wood Door Pulls and Push Bars

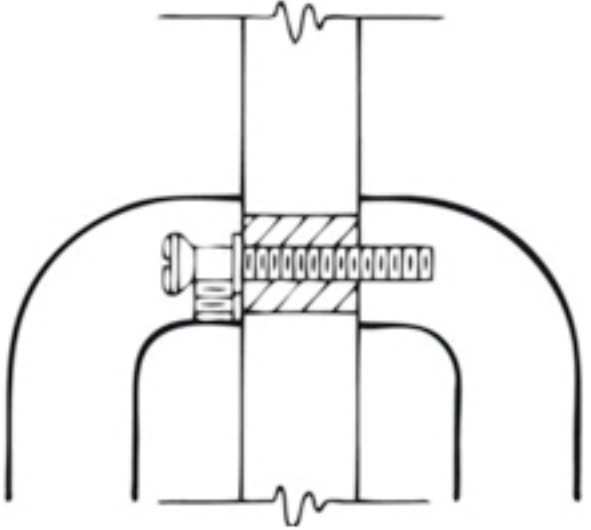
Type 9HD



**Heavy Duty Decorative Thru Bolt Mounting**

Size: Decorative Cap with 3/8-24 Threaded Stud 5/8" diameter Plexiglas Sleeve. Plastic Washers.  
Use for Metal or Wood Door Pulls and Push Bars

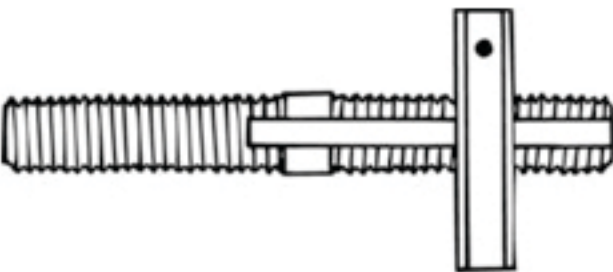
Type 10HD



**Heavy Duty Back to Back Mounting for glass door**

Size: 3/8-24 × 1-1/2" Conehead. 5/8" diameter Plexiglas Sleeve. Metal Washers. Plastic Washers.  
Use for Glass Door Pulls and Push Bars - Specify Glass Thickness

Type 11



**Heavy Duty Back to Back Mounting with Reverse Thread Stud and Spanner Collar**

Size: 3/8-24 × 3-1/2" LH/RH threaded stud. 1" or 1-1/4" diameter Spanner Collar  
Use for Heavy Duty Type of Back to Back Mounting with LH / RH Reverse Thread for Door Pulls and Push Bars