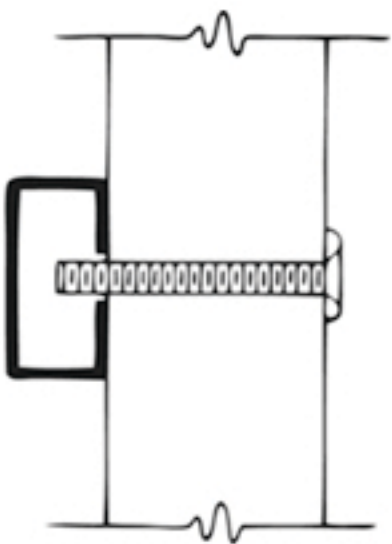


# Burns Mounting Options

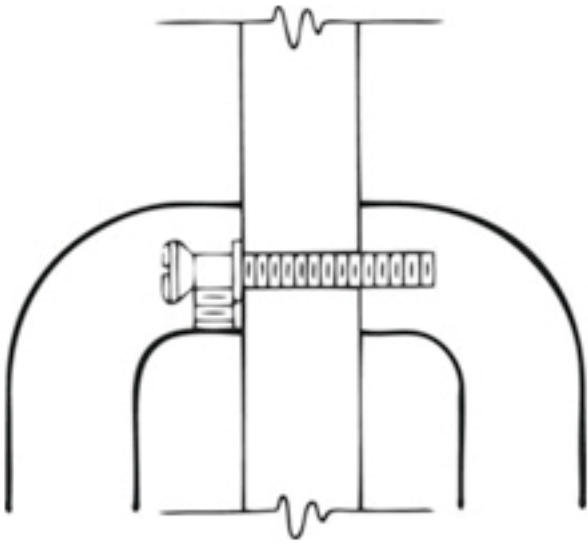
Type 1



**Standard Duty Thru Bolt with Finish Washer**

Size: 1/4-20 × 2-1/2" TB w/ Finish Washer  
Use for Door Pulls and Push Bars

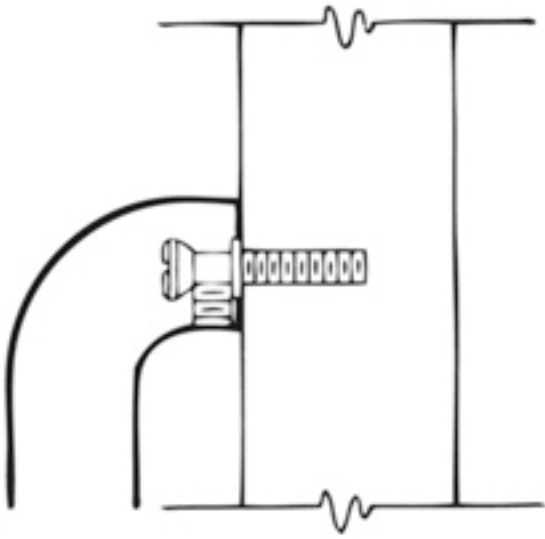
Type 5



**Standard Duty Back to Back Mounting**

Size: 1/4-20 × 2-1/2" Conehead  
Use for Door Pulls and Push Bars

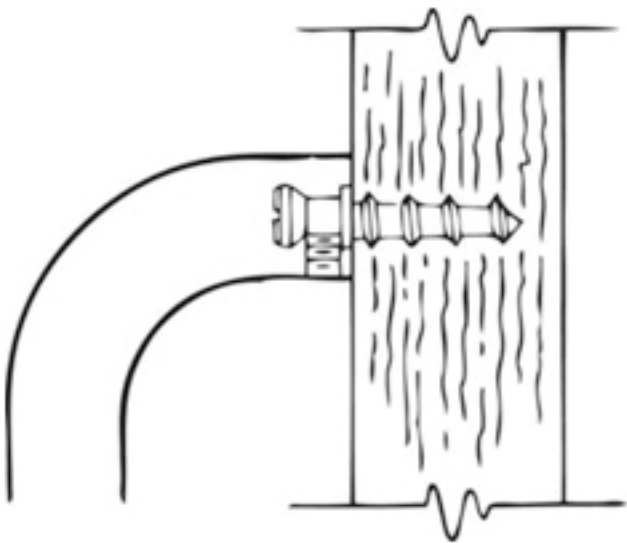
Type 6



**Standard Duty Concealed Mounting on metal doors**

Size: 1/4-20 × 1" Conehead  
Use for Metal Door Pulls and Push Bars - tap door for 1/4-20 thread

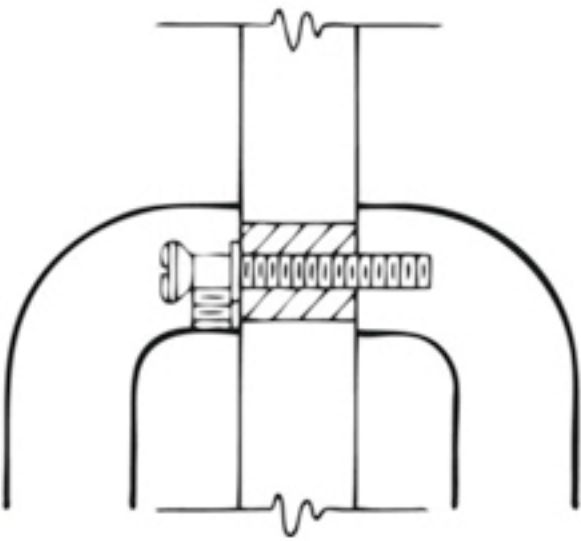
Type 7



**Concealed Mounting on wood door**

Size: 1/4-20 Conehead w/ #8 × 1-1/4" Wood Screw  
Use for Wood Door Pulls and Push Bars

Type 10



**Standard Duty Back to Back Mounting for glass door**

Size: 1/4-20 × 1-1/4" Conehead. 5/8" diameter Plexiglas Sleeve. Metal Washers. Plastic Washers  
Use for Glass Door Pulls and Push Bars - Specify Glass Thickness