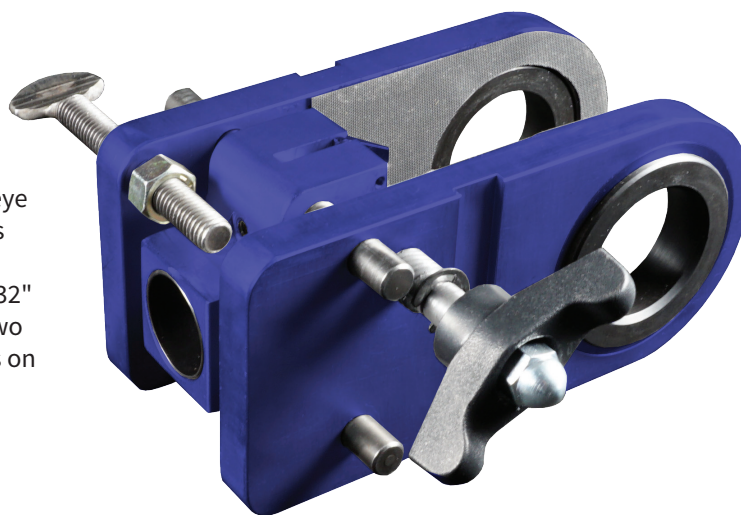




MORE GREAT TOOLS FROM FRAMON

BULLSEYE INSTALLATION JIG

Framon is proud to introduce our latest product, the Bullseye Installation Jig. The new installation jig will assist installers with drilling wood or metal doors, both 2-3/8" and 2-3/4" backset. The tool is completely self-contained besides a 3/32" allen wrench to change bore sizes. The tool also features two 1/8" locating holes at 12 & 6 o'clock to locate through bolts on popular lever locks. **PART # BULL**



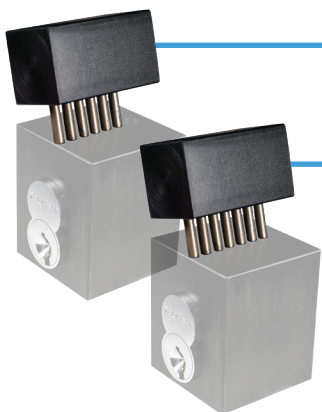
SFIC PINNING / CAPPING BLOCK (CPB1)

Another great tool from Framon Manufacturing for locksmiths who use interchangeable core. The CPB1 comes with a pinning / capping block, ejecting pin and capping tool. Insert the core into the tool and eject the old pins quickly and easily. Flip the block over to load the chambers and cap the core. Made in the USA. **PART # CPB1**



KABA PEAKS PINNING / CAPPING BLOCK (CPB140)

A great tool for locksmiths using Kaba Peaks .140 cylinders. The CPB140 comes with a pinning / capping block, ejecting pin and capping tool. Insert the core into the tool and eject the old pins quickly and easily. Flip the block over to load the chambers and cap the core. Made in the USA. **PART # CPB140**



6 PIN CAPPING TOOL (CBCAP6)

Add the CBCAP6 to your arsenal (works with the CPB140 Tool) and cap an entire Peaks core with one blow of the hammer. Load all your chambers, insert your caps and drive them in place with this handy addition.

PART # CBCAP6

7 PIN CAPPING TOOL (CBCAP7)

Add the CBCAP7 to your arsenal (works with the CPB1 Tool) and cap an entire core with one blow of the hammer. Load all of your chambers, insert your caps and drive them in place with this handy addition.

PART # CBCAP7