



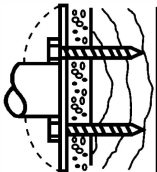
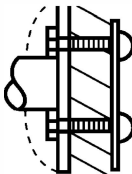
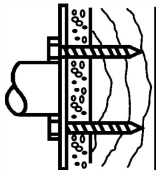
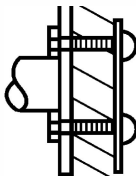
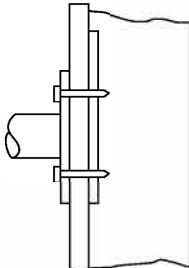
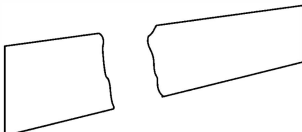
Washroom Accessories Division

TEL: 1-800-BRADLEY FAX: 262-251-5817

Web Site: www.bradleycorp.com

ve Date February 1, 2012

Series 800 - Mounting Kits and Anchoring Devices

CONCEALED MOUNTING KITS	Stud walls with wood supports 899-010 Material Included: (2) 1/4 x 2-1/2" plated steel hex head lag bolts	Partition walls 899-011 Material Included: A. (2) 1/4-20 x 1-3/8" plated steel hex head machine screws B. (2) cap nuts C. (1) backing plate
		
EXPOSED MOUNTING KITS	Stud walls with wood supports 899-020 Material Included: (2) #14 x 2-1/2" stainless steel Philips oval head sheet metal screws	Partition walls 899-021 Material Included: A. (2) 1/4-20 x 1-1/2" stainless steel Philips oval head machine screws B. (2) cap nuts C. (1) backing plate
		
METAL STUD WALL MOUNTING KITS	(Concealed or Exposed) 899-014 Material Required: A. In-wall anchor plate (not included). Specify and order B. #10 sheet metal screws (furnished by others). C. Metal stud. D. (2) 1/4-20 x 1-1/4" flat head machine screws. (included with Mounting Kit 899-014) E. Wall dimension (to be furnished if over 3/4 inch).	
		
IN-WALL ANCHOR PLATE	899-015 x Length (to 96") Must exceed length of Grab Bar by 12" Universal Anchor Plate Please contact customer service for a quotation. Material: 4" x 1/8" cold rolled steel - length as specified to 96". Note: Separately order 899-014 mounting kits as required. 899-015480 48" x 4" x 1/8" 899-015540 54" x 4" x 1/8"	
		



Washroom Accessories Division

TEL: 1-800-BRADLEY FAX: 262-251-5817

Web Site: www.bradleycorp.com

ve Date February 1, 2012

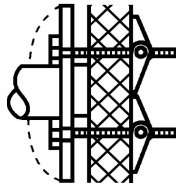
Series 800 - Mounting Kits and Anchoring Devices

Panel walls

899-012

Material Included:

- A. (2) 1/4-20 x 3" plated steel
hex head machine screws
- B. (2) toggle nuts

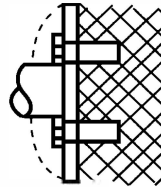


Masonry walls

899-013

Material Included:

- A. (2) 1/4-20 x 1" plated steel
hex head machine screws
- B. (2) 1/4-20 lead anchors

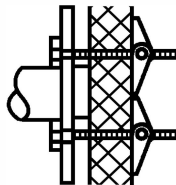


Panel walls

899-022

Material Included:

- A. (2) 1/4-20 x 3" stainless steel
Phillips oval head machine screws
- B. (2) toggle nuts

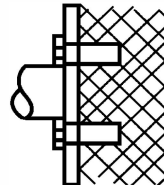


Masonry walls

899-023

Material Included:

- A. (2) 1/4-20 x 1" stainless steel
Phillips oval head machine screws
- B. (2) 1/4-20 lead anchors



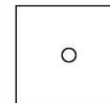
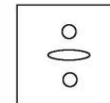
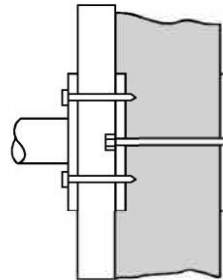
BLOCK WALL MOUNTING KITS

(Concealed or Exposed)

899-016

Material Required (items A-D included with 899-016 Kit):

- A. Front anchor plate 3" x 3" x 1/8" cold rolled steel-center
slot punched and 2 fastener holes pre-punched.
- B. (2) 1/4-20 x 1-1/4" umbar-plated
Phillips oval head rollock tapping screws.
- C. (1) 3/8-16 steel zinc-plated tie rod with nut.
- D. Back anchor plate 3" x 3" x .12" cold rolled steel -
tapped for and including 3/8-16 stud and nut.
- E. Finished wall thickness (to be furnished if over 3/4")
Additional Charge for thickness over 3/4".
- F. Masonry wall (thickness to be furnished).



Back Anchor Plate

Installation:

Fasten to studs before wall is applied. Recess as required for flush finish wall application.

To attach grab bar, drill #2 (.221 diameter) holes

Attach with 1/4-20 x 1-1/4" umbar-plated Phillips oval head rollock tapping screws.