

# BOMMER INSTALLATION INSTRUCTIONS

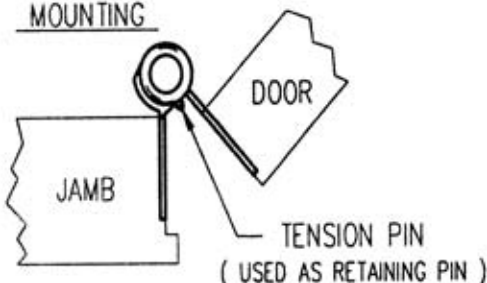
## ADJUSTABLE SPRING HINGE

No. 4030 - 6

No. 4040 - 6 & 7



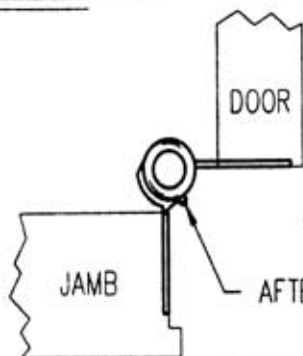
### MOUNTING



THIS HINGE CAN BE USED FOR RIGHT HAND, LEFT HAND, AND PAIRS OF DOORS WITHOUT CHANGING THE APPEARANCE. TO OBTAIN OPPOSITE HAND, TURN HINGE UPSIDE DOWN.

THE FIXED COLLAR CAN BE IDENTIFIED BY THE TENSION PIN PLACED IN THE COLLAR TO HOLD THE HINGE OPEN WHILE INSTALLING HINGE TO THE DOOR AND JAMB.

**CAUTION: DO NOT TRY TO CLOSE DOOR WHILE TENSION PIN IS PLACED IN FIXED COLLAR.**



THIS HINGE IS DESIGNED TO BE FASTENED TO THE DOOR AND JAMB UNDER PRE-SET TENSION. DO NOT REMOVE TENSION PIN

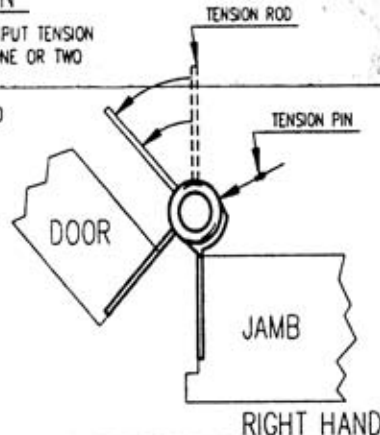
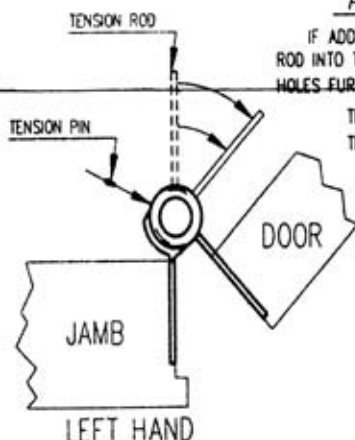
THE LEAVES ARE HELD APART LESS THAN 90° WHICH GIVES ROOM ENOUGH TO FASTEN THE HINGES IN POSITION.

AFTER INSTALLATION, OPEN DOOR TO 90° AND THEN REMOVE TENSION PIN. DOOR WILL CLOSE UNDER PRE-SET TENSION.

### ADDITIONAL TENSION

IF ADDITIONAL TENSION IS DESIRED, PUT TENSION ROD INTO TENSION COLLAR AND TURN ONE OR TWO HOLES FURTHER AS SHOWN.

THEN INSERT TENSION PIN INTO TENSION COLLAR.



NOTE - REF. NBFU PAMPHLET No.80: "DOORS UP TO 60 in IN HEIGHT SHALL BE PROVIDED WITH TWO HINGES AND AN ADDITIONAL HINGE FOR EACH 30 in OF HEIGHT OR FRACTION THEREOF."

BOMMER INDUSTRIES INC.  
LANDRUM, S.C.



86559

01 APRIL 97