
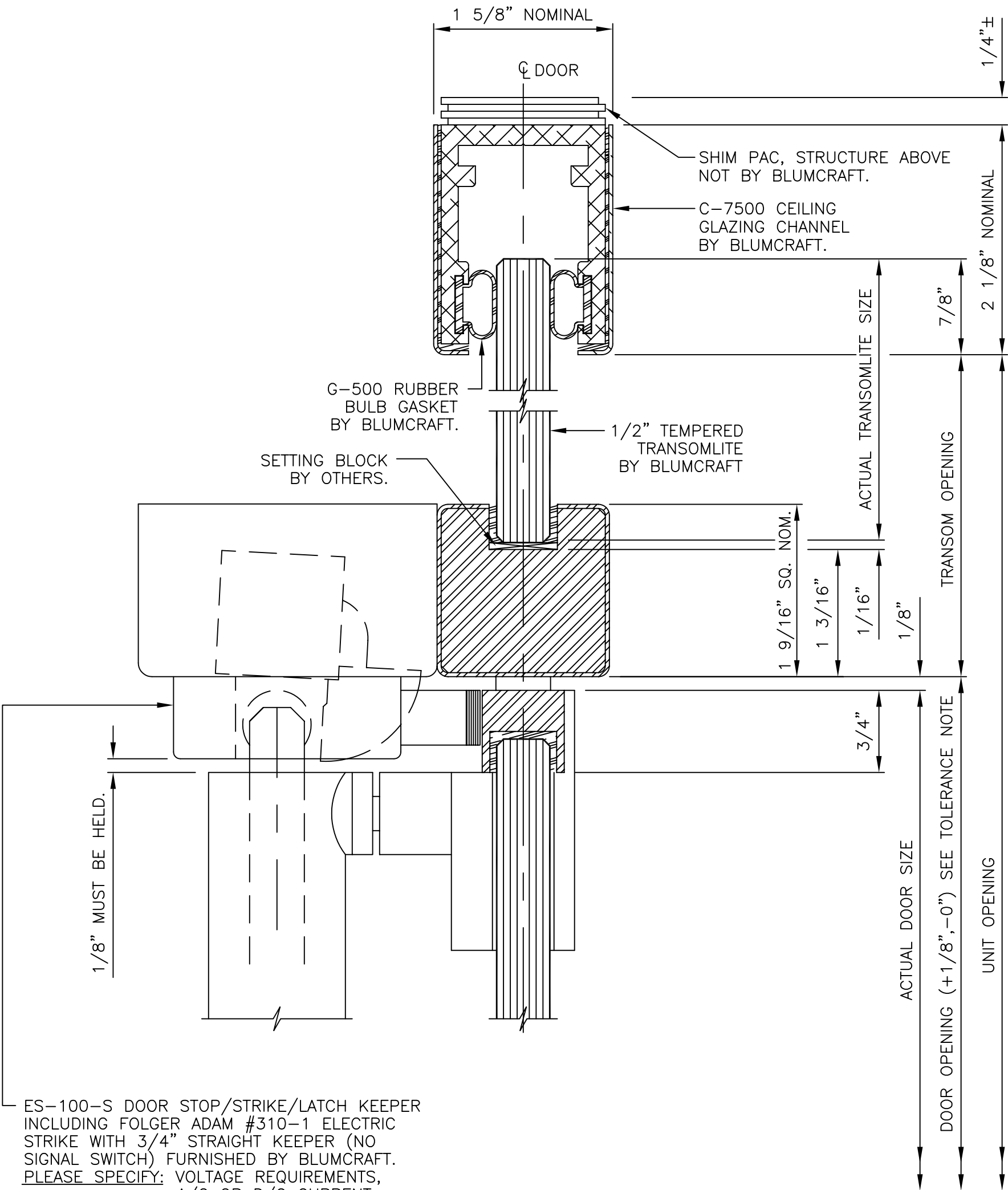


TOLERANCES: +.005 - .005 + 1/64 - 1/64
UNLESS OTHERWISE SPECIFIED DECIMALS FRACTIONS

	REVISIONS	DATE	DN CH

 OF PITTSBURGH		DRAWN BY	KC 7/13/05
		CHECKED BY	-
		SCALE	FULL
H-100 PANIC HARDWARE WITH ELECTRIC STRIKE		DWG. NO. CAD-1301FC-2	
		SHEET 1 OF 1	



ES-100-S DOOR STOP/STRIKE/LATCH KEEPER INCLUDING FOLGER ADAM #310-1 ELECTRIC STRIKE WITH 3/4" STRAIGHT KEEPER (NO SIGNAL SWITCH) FURNISHED BY BLUMCRAFT. PLEASE SPECIFY: VOLTAGE REQUIREMENTS, A/C OR D/C CURRENT, FAIL SAFE OR NON-FAIL SAFE (FAIL SECURE), SILENT OPERATION FEATURE.

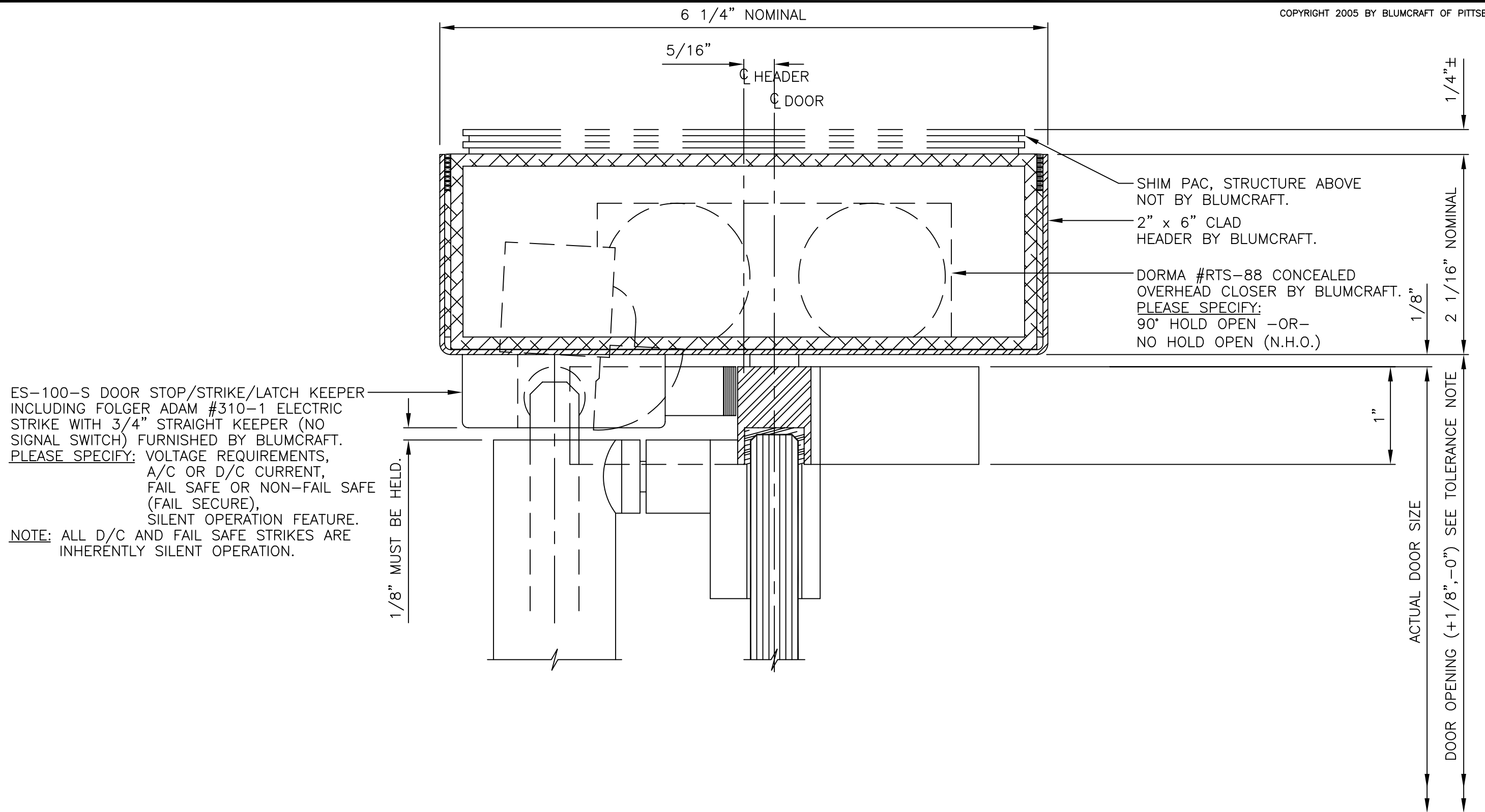
NOTE: ALL D/C AND FAIL SAFE STRIKES ARE INHERENTLY SILENT OPERATION.

TOLERANCES: + .005 - .005 + 1/64 - 1/64
UNLESS OTHERWISE SPECIFIED DECIMALS FRACTIONS

	REVISIONS	DATE	DN	CH
DRAWN BY		KC 7/13/05		
CHECKED BY		-		
SCALE		FULL		
B-1250 TRANSOM BAR WITH ELECTRIC STRIKE		DWG. NO. CAD-1301TB-2		
		SHEET 1 OF 1		

Blumcraft

O F P I T T S B U R G H



TOLERANCES: +.005 - .005 + 1/64 - 1/64
UNLESS OTHERWISE SPECIFIED DECIMALS FRACTIONS

	REVISIONS	DATE	DN	CH
DRAWN BY		KC 7/13/05		
CHECKED BY		-		
SCALE		FULL		
H-100 PANIC HARDWARE WITH ELECTRIC STRIKE		DWG. NO. CAD-1301COC-2		
		SHEET 1 OF 1		