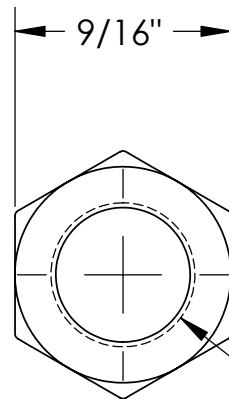
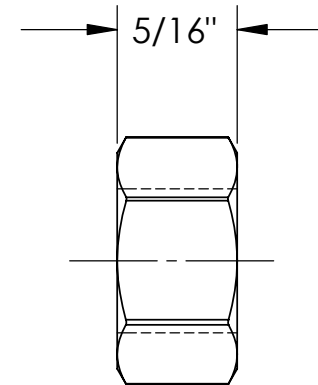


PART NUMBER	DESCRIPTION
SD185-Y	NUT-HEX LOCK 3/8"-16 YELLOW CHRMT
SD185/316	NUT-HEX LOCK 3/8"-16 316SS



3/8-16 UNC



RELEASED TO
MANUFACTURING

DATE: 06/23/2005

APPROVED BY: M.A.

B	RECREATED IN SOLIDWORKS	19.171	PRC	04-06-05
A	REDRAWN IN ME10	14514	JVO	04-04-03
REV.	DESCRIPTION	ECR	BY	DATE

REVISIONS

THIS DRAWING IS THE PROPERTY
OF THE BILCO COMPANY AND
INCORPORATES PROPRIETARY
INFORMATION. PUBLICATION
AND/OR PUBLIC DISTRIBUTION
IN WHOLE OR IN PART IS
EXPRESSLY PROHIBITED WITHOUT
THE PRIOR WRITTEN CONSENT
OF THE BILCO COMPANY.
THE INFORMATION CONTAINED
HEREIN REMAINS THE PROPERTY
OF THE BILCO COMPANY. ALL
RIGHTS RESERVED.

UNLESS OTHERWISE SPECIFIED: REMOVE ALL BURRS & SHARP CORNERS DIMENSION TOLERANCES x.xxx +/- .010 x.xx +/- .015 xx +/- .030 ANGLES +/- 2° FRACTIONS +/- 1/16	INTERPRET GEOMETRIC TOLERANCING PER: MATERIAL SEE TABLE FINISH SEE TABLE DO NOT SCALE DRAWING	NAME/# DATE DRAWN PRC 04-06-05 ORG. AUTHOR TFH ORG. ECR 0-22-90 Q.A. COMMENTS:	TITLE: NUT-HEX LOCK 3/8"-16_ SIZE DWG. NO. REV A SD185 B SCALE: 2:1 WEIGHT: SHEET 1 OF 1
---	---	--	--



Manufacturers of Doors for Special Services
THE BILCO COMPANY
New Haven, Connecticut 06505