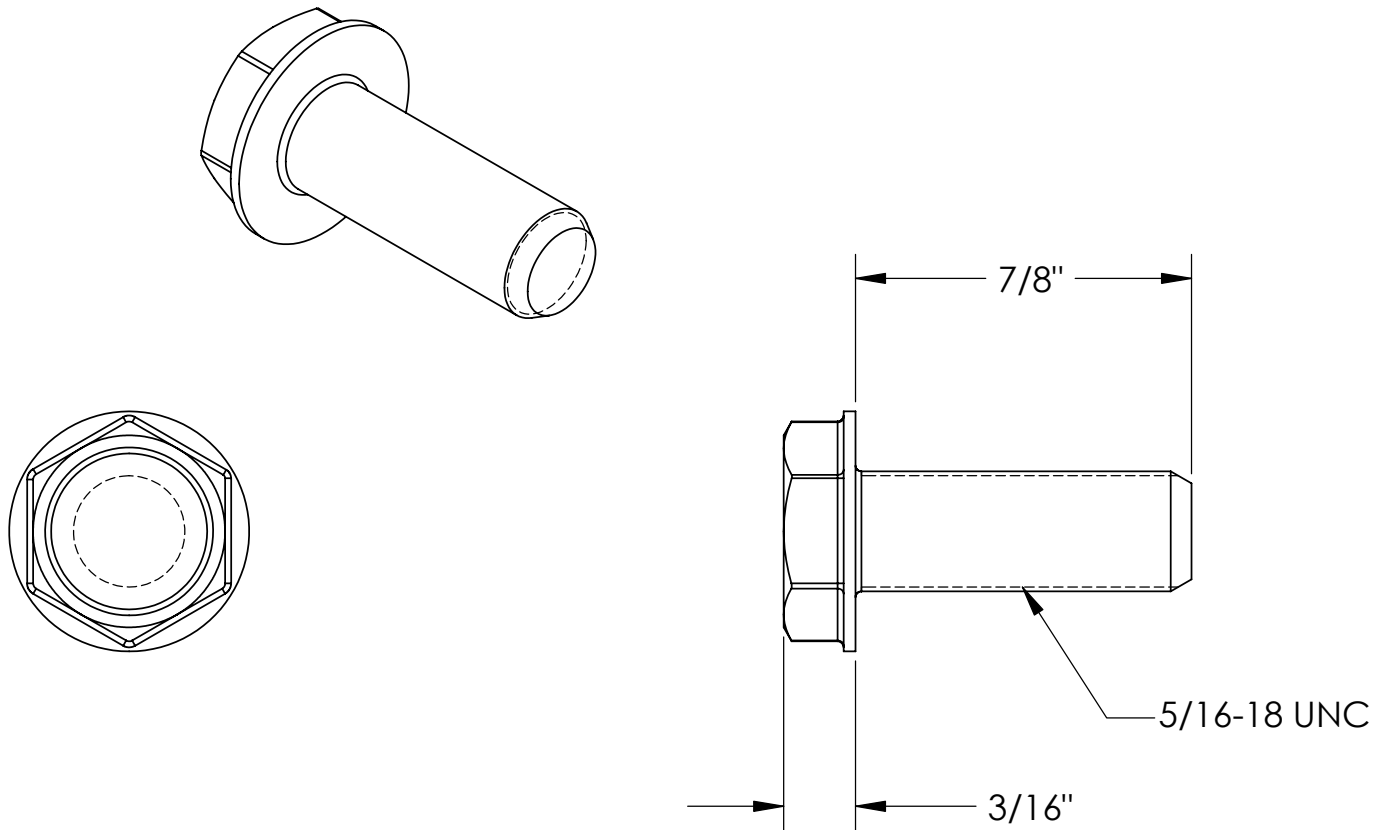


PART NUMBER	DESCRIPTION
SD3-1-Y	SCREW - TAPTITE LOW 5/16"-18 x 7/8" YELLOW CHRMT
SD3-1/316	SCREW - TAPTITE LOW 5/16"-18 x 7/8" 316SS




RELEASED TO
MANUFACTURING

DATE: 08/23/2005

APPROVED BY: M.A

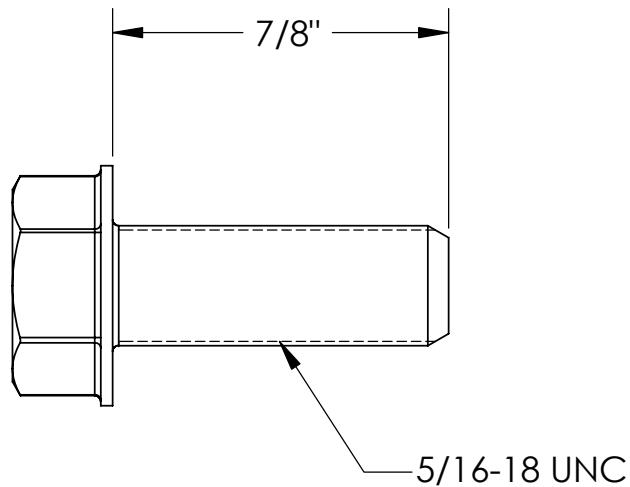
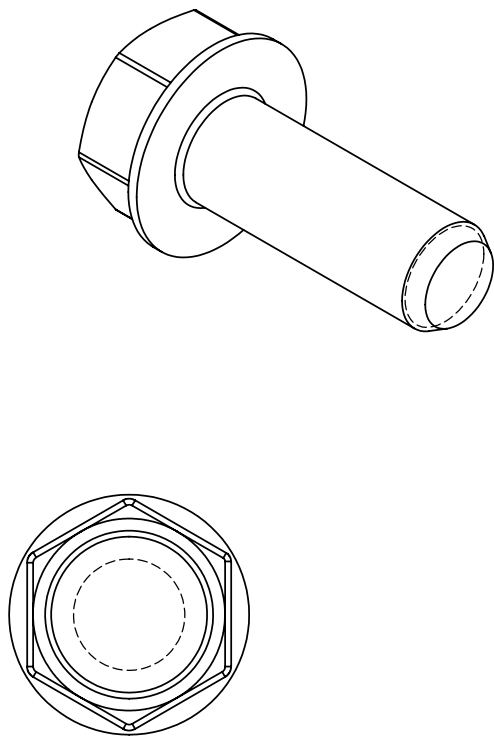
NOTE:
1. TAPTITE GRADE 5, 5/16 - 18 THD,
INDENTED UNSLOTTED HEX WASHER HEAD.

UNLESS OTHERWISE SPECIFIED:		NAME/#	DATE	 THE BILCO COMPANY <small>Manufacturers of Doors for Special Services New Haven, Connecticut 06505</small>
DRAWN		PRC	03-04-05	
ORG. AUTHOR		TFH		
ORG. ECR		01-12-90		
Q.A.				
COMMENTS:				TITLE:
INTERPRET GEOMETRIC TOLERANCING PER:				SD3-1
MATERIAL				REV B
FINISH				SCALE: 2:1
DO NOT SCALE DRAWING				WEIGHT:
				SHEET 1 OF 1

REV.	DESCRIPTION	ECR	BY	DATE
B	RECREATED IN SOLIDWORKS, COMBINED SD3-1-Y, SD3-1-316 INTO ONE TABULATED DWG	19.171	PRC	03-04-05
A	HEAD HEIGHT ".187" WAS "13/64"	14636	JVO	04-22-03

THIS DRAWING IS THE PROPERTY OF THE BILCO COMPANY AND INCORPORATES PROPRIETARY INFORMATION. PUBLICATION AND/OR PUBLIC DISTRIBUTION IN WHOLE OR IN PART IS EXPRESSLY PROHIBITED WITHOUT THE PRIOR WRITTEN CONSENT OF THE BILCO COMPANY. THE INFORMATION CONTAINED HEREIN REMAINS THE PROPERTY OF THE BILCO COMPANY. ALL RIGHTS RESERVED.

PART NUMBER	DESCRIPTION
SD3-Y	SCREW - TAPTITE 5/16"-18 x 7/8" YELLOW CHRMT
SD3/316	SCREW - TAPTITE 5/16"-18 x 7/8" 316SS




**RELEASED TO
MANUFACTURING**

DATE: **08/23/2005**

APPROVED BY: **M.A.**

REV.	DESCRIPTION	ECR	BY	DATE
B	RECREATED IN SOLIDWORKS, COMBINED SD3-Y, SD3-316 INTO ONE TABULATED DWG	19.171	PRC	03-04-05
A	REDRAWN IN ME10	14514	JVO	03-26-03

THIS DRAWING IS THE PROPERTY OF THE BILCO COMPANY AND INCORPORATES PROPRIETARY INFORMATION. PUBLICATION AND/OR PUBLIC DISTRIBUTION IN WHOLE OR IN PART IS EXPRESSLY PROHIBITED WITHOUT THE PRIOR WRITTEN CONSENT OF THE BILCO COMPANY. THE INFORMATION CONTAINED HEREIN REMAINS THE PROPERTY OF THE BILCO COMPANY. ALL RIGHTS RESERVED.

UNLESS OTHERWISE SPECIFIED:		NAME/#	DATE	 THE BILCO COMPANY Manufacturers of Doors for Special Services New Haven, Connecticut 06505		
UNLESS OTHERWISE SPECIFIED REMOVE ALL BURRS & SHARP CORNERS DIMENSION TOLERANCES XXXX +/- .010 XXXX +/- .015 XX +/- .030 ANGLES +/- 2° FRACTIONS +/- 1/16	DRAWN	PRC	03-04-05	TITLE: SCREW-TAPTITE LOW 5/16"-18x7/8"		
	ORG. AUTHOR	TFH				
	ORG. ECR		01-26-90	SIZE DWG. NO. REV A SD3 B		
	Q.A.					
INTERPRET GEOMETRIC TOLERANCING PER:	COMMENTS:					
MATERIAL	SEE TABLE					
FINISH	SEE TABLE					
DO NOT SCALE DRAWING						