

**The Bilco Company**  
P.O. Box 1203  
New Haven, CT. 06505  
(203) 934-6363, Fax (203) 535-1582



October 01 2025

2025087138

Attn: ABS

ARCHITECTURAL BUILDERS SUPPLY  
3435 ENTERPRISE AVE UNIT #1  
NAPLES FL 34104

Re: Your Order: 135645  
Job : DAVID SAGASTUME

Thank you for your above order. In accordance with your instructions we are pleased to enclose 1 copy(ies) of shop details to submit for architect's approval and will hold up fabrication until approval to proceed is received. The fabrication time will be determined AFTER Bilco receives signed approval. Please send to cs@quanex.com

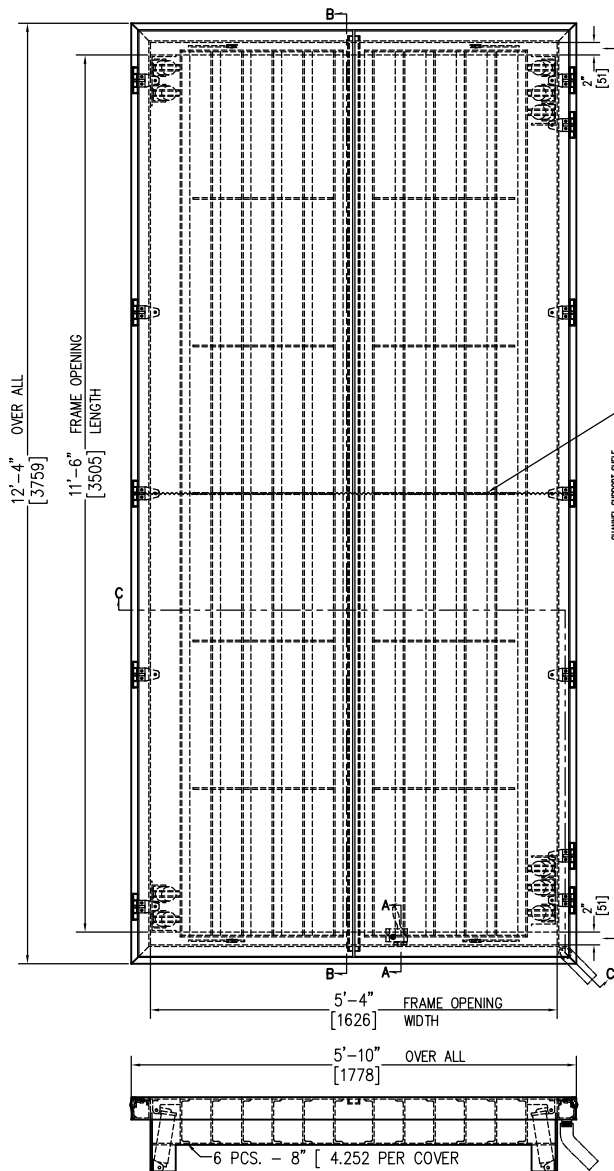
DRAWING NUMBER: JD-21299 REV A  
EMAIL: SALES@ABSUPPLY.NET; TRACKING@ABSUPPLY.NET

Cordially

The Bilco Company

cc FG BUILDING PRODUCTS  
13400 SUTTON PARK DR SOUTH  
STE 1602  
JACKSONVILLE FL 32224

**IMPORTANT NOTICE**  
**APPROVED DRAWINGS MUST BE RECEIVED AT BILCO BEFORE**  
**PRODUCTION CAN BEGIN. LEAD TIME AND SHIP DATES ARE BASED ON**  
**THE DATE THAT APPROVED DRAWINGS ARE RECEIVED AT BILCO.**  
**\*\*AS PER BILCO POLICY PURCHASE ORDERS WILL NOT BE SIGNED AND RETURNED**  
**UNTIL APPROVAL DRAWINGS ARE RECEIVED BY BILCO.\*\***



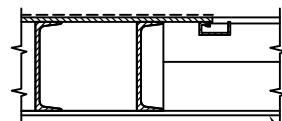
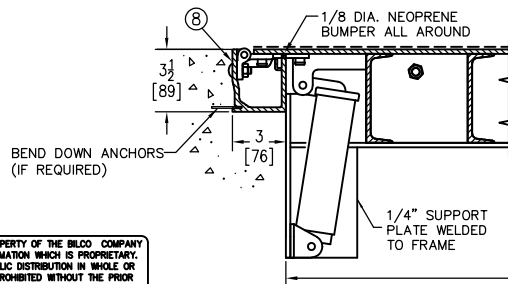
BUTTWELD IN CVR

CHANNEL SUPPORT SHELF

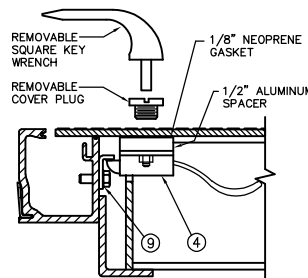
NOTE:  
DESIGNED TO WITHSTAND H-20 WHEEL  
LOADINGS SUITABLE FOR USE IN OFF-  
STREET LOCATIONS WHERE NOT SUBJECTED  
TO HIGH DENSITY TRAFFIC

4'-1\"/>

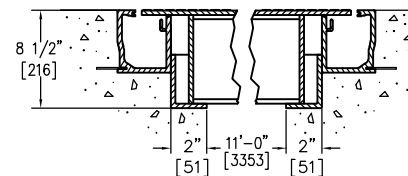
Frame areas that come  
in contact with concrete  
shall be coated with  
bituminous paint



SECTION C-C  
SHOWN WITH COVER OPEN  
ENLARGED FOR CLARITY

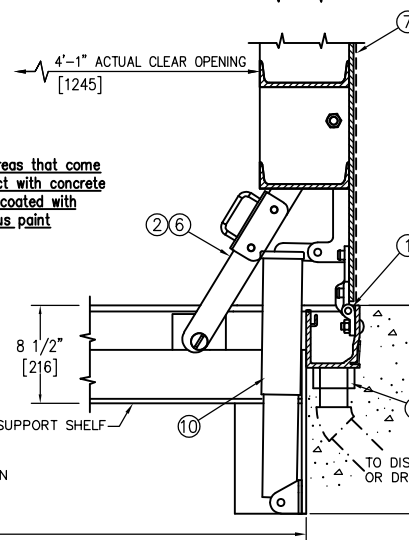
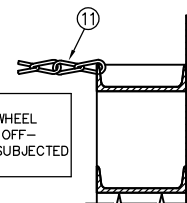


SECTION A-A  
STANDARD SLAM LOCK



CHANNEL SUPPORT SHELF MUST  
BE SUPPORTED BY CONCRETE OR  
STEEL TO CARRY H-20 LOADING

SECTION B-B



5'-0\"/>

THIS DRAWING IS THE PROPERTY OF THE BILCO COMPANY  
AND INCORPORATES INFORMATION WHICH IS PROPRIETARY.  
PUBLICATION AND/OR PUBLIC DISTRIBUTION IN WHOLE OR  
IN PART IS EXPRESSLY PROHIBITED WITHOUT THE PRIOR  
WRITTEN CONSENT OF THE BILCO COMPANY. THE  
INFORMATION CONTAINED HEREIN REMAINS THE PROPERTY  
OF THE BILCO COMPANY. ALL RIGHTS RESERVED.

JD-HN\_AL 2-28-14 PLOT2

Sym	Revision	Date	By
A	NEW RELEASE		

**SPECIFICATIONS:**

- Bilco heavy duty forged stainless steel hinges with stainless steel pins
- Guide arm
- 1-1/2" drain coupling
- Standard slam lock
- 
- Bilco automatic lock open arm
- 1/4" aluminum diamond pattern plate cover
- Bilco 1/4" aluminum channel frame with recessed anchors
- Stainless steel lock strike
- Stainless steel spring lifting mechanism
- Heavy duty check chain

**INSTALLER NOTES:**

A. Use caution. Cover is spring loaded. Do not remove safety shipping bolt until unit is to be installed and in normal horizontal operating position.

B. Be sure unit is set on slight pitch toward drain corner.

C. Before anchoring in place open and close door. Check to see that the door in the closed position rests on the frame all around. If not, shim under the frame at the proper corner.

D. Do not reduce 1 1/2" drain pipe to dry well or disposal system.

E. Bend down anchors if required

1 UNIT(S) REQUIRED AS SHOWN (Aluminum Weldment)  
COVER REINF. FOR H-20 LOADING

SHOP FINISH:  
COVER: MILL FINISH  
FRAME: MILL FINISH  
HARDWARE: STAINLESS STEEL TYPE 316  
(UNLESS OTHERWISE SPECIFIED)

Customer: ARCHITECTURAL BUILDERS SUPPLY  
3435 ENTERPRISE AVE UNIT #1  
NAPLES FL 34104

P.O. No: 135645

Job: DAVID SAGASTUME

Tag:

Sales Rep: FG BUILDING PRODUCTS  
13400 SUTTON PARK DR SOUTH  
JACKSONVILLE FL 32224

Approved By:

Date:

Manufacturers of Doors for Special Services  
**Bilco** THE BILCO COMPANY  
New Haven, Connecticut 06505

TYPE "JD" - (H20) ALUMINUM DOUBLE LEAF ACCESS  
DOOR - SIZE 5'-4" x 11'-6"  
[ 1626 mm x 3505 mm ]

Drawn By: BMJ	Date: 10-1-25	Drawing No.: JD-21299	Rev.: A
949435	Scale: DO NOT SCALE		

3 @ 400, 3 @ 480