

No Matter What Your Application...



Patent Pending

The VersaMount™ Has You Covered

Bilco's new VersaMount™ access hatch will expand your installation options while providing your customer with ease of operation, weather-tight performance, and years of maintenance-free service.

Whether your application

involves new construction, retrofit, or replacement, the VersaMount's innovative anchor clip system and versatile frame design will help complete the job efficiently, professionally, and permanently.



Bilco's VersaMount access hatch is available for immediate shipment in four industry-standard sizes.

Job-Built
Wood Curbs



Job-Built
Concrete Curbs



Existing Irregularly
Sized Curbs



Job-Built/
Prefab Metal Curbs



Over Existing
Scuttle Curbs



Bilco®

Call (203) 934-6363
or log on to www.bilco.com

Bilco's VersaMount™ Access Hatch

The Bilco VersaMount™ access hatch combines the ease of operation, weathertight performance, and the long service life of a quality Bilco roof hatch, with the added advantage of enhanced installation flexibility. The product features an innovative mounting system and complete installation instructions for fast, secure, professional installation in a variety of applications involving job-built and existing curbs, as well as curb-less openings. The VersaMount access hatch is available in steel, aluminum and stainless steel, in three industry-standard sizes plus a special metric size.

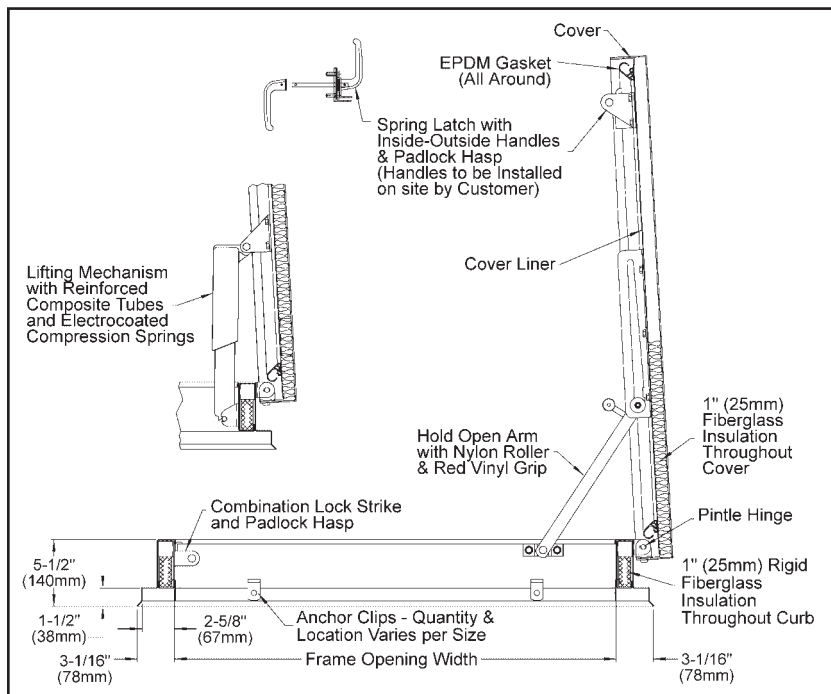
SPECIFICATIONS:

Access hatch shall be Bilco Model# _____ size _____ as manufactured by The Bilco Company in accordance with the following specifications:

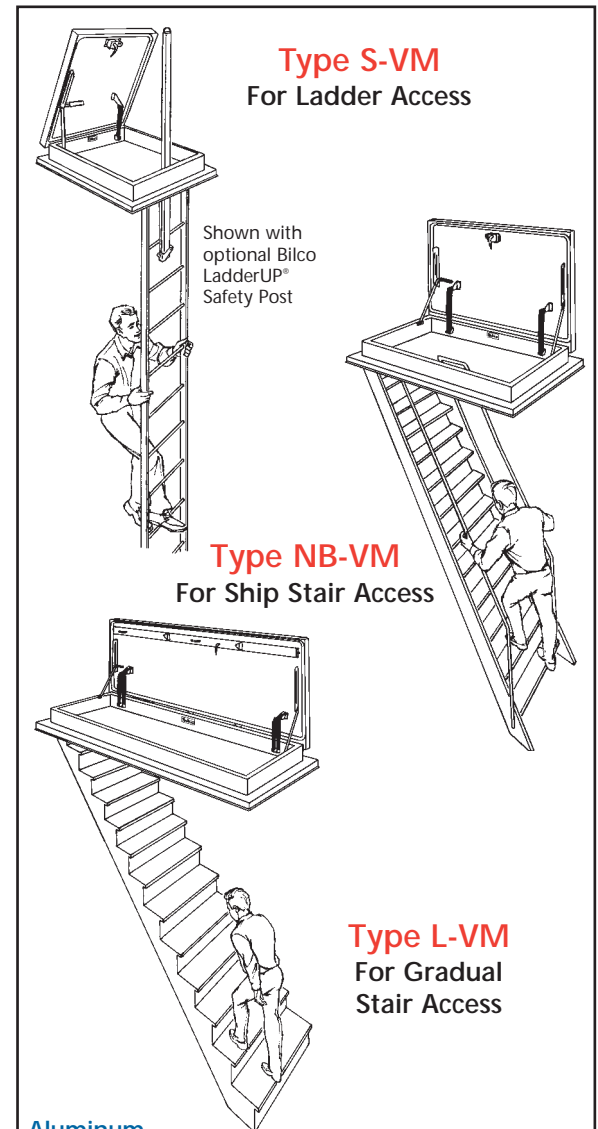
- Material & Finish:** Cover and frame are 14 ga. (1.9mm) paint bond galvanized steel / red oxide primer [or 11 ga. (2.3mm) aluminum / mill finish] [or 14ga. (1.9mm) Type 304 stainless steel / sand blast finish]. Hardware components are zinc-plated and chromate sealed, unless otherwise noted.
- Cover:** Breakformed, hollow-metal design with 1" (25mm) concealed insulation, 3" (76mm) beaded, overlapping flange, fully welded at corners, and internally reinforced for 40 psf (195 kg/m²) live load.
- Frame:** Breakformed, hollow-metal design with 1" (25mm) concealed insulation, 2-5/8" (67mm) mounting flange and 1-1/2" (38mm) apron, fully welded at corners. Stainless steel anchor clips are included.
- Gasket:** Specially designed, EPDM rubber gasket, permanently adhered to the cover.
- Hinges:** Heavy pintle hinges with 3/8" (10mm) solid stainless steel hinge pins.
- Latch:** Spring latch with inside and outside handles and padlock hasps.
- Lift Assistance:** Electrostatically coated compression springs enclosed in self-lubricating composite cylinders. Automatic hold-open arm with 1" (25mm) comfort grip handle.
- Warranty:** Five (5) years from date of purchase covering defects in material and workmanship.

Note: The VersaMount access hatch installs on conventional built-up and single-ply roofs when a job-built wood curb is provided by the installer in accordance with established roofing practice.

DETAILS:



STANDARD SIZES AND WEIGHTS:



Aluminum

Size	Model #	Shipping Weight
3'0" X 2'6" (914 x 762 mm)	S-50VM	86 lbs (39kg)
2'6" X 4'6" (762 x 1372 mm)	NB-50VM	100 lbs (46kg)
2'6" X 8'0" (762 x 2438 mm)	L-50VM	178 lbs (81kg)
1m X 1m	EW-50VM	90 lbs (41kg)

Steel

Size	Model #	Shipping Weight
3'0" X 2'6" (914 x 762 mm)	S-20VM	152 lbs (70kg)
2'6" X 4'6" (762 x 1372 mm)	NB-20VM	180 lbs (82kg)
2'6" X 8'0" (762 x 2438 mm)	L-20VM	320 lbs (145kg)
1m X 1m	EW-20VM	170 lbs (77kg)

Stainless Steel

Size	Model #	Shipping Weight
3'0" X 2'6" (914 x 762 mm)	S-90VM	180 lbs (82kg)
2'6" X 4'6" (762 x 1372 mm)	NB-90VM	195 lbs (89kg)
2'6" X 8'0" (762 x 2438 mm)	L-90VM	352 lbs (160kg)
1m X 1m	EW-90VM	187 lbs (85kg)



Since 1926

The Bilco Company
P.O. Box 1203
New Haven, CT 06505
(203) 934-6363
Fax: (203) 933-8478
www.bilco.com