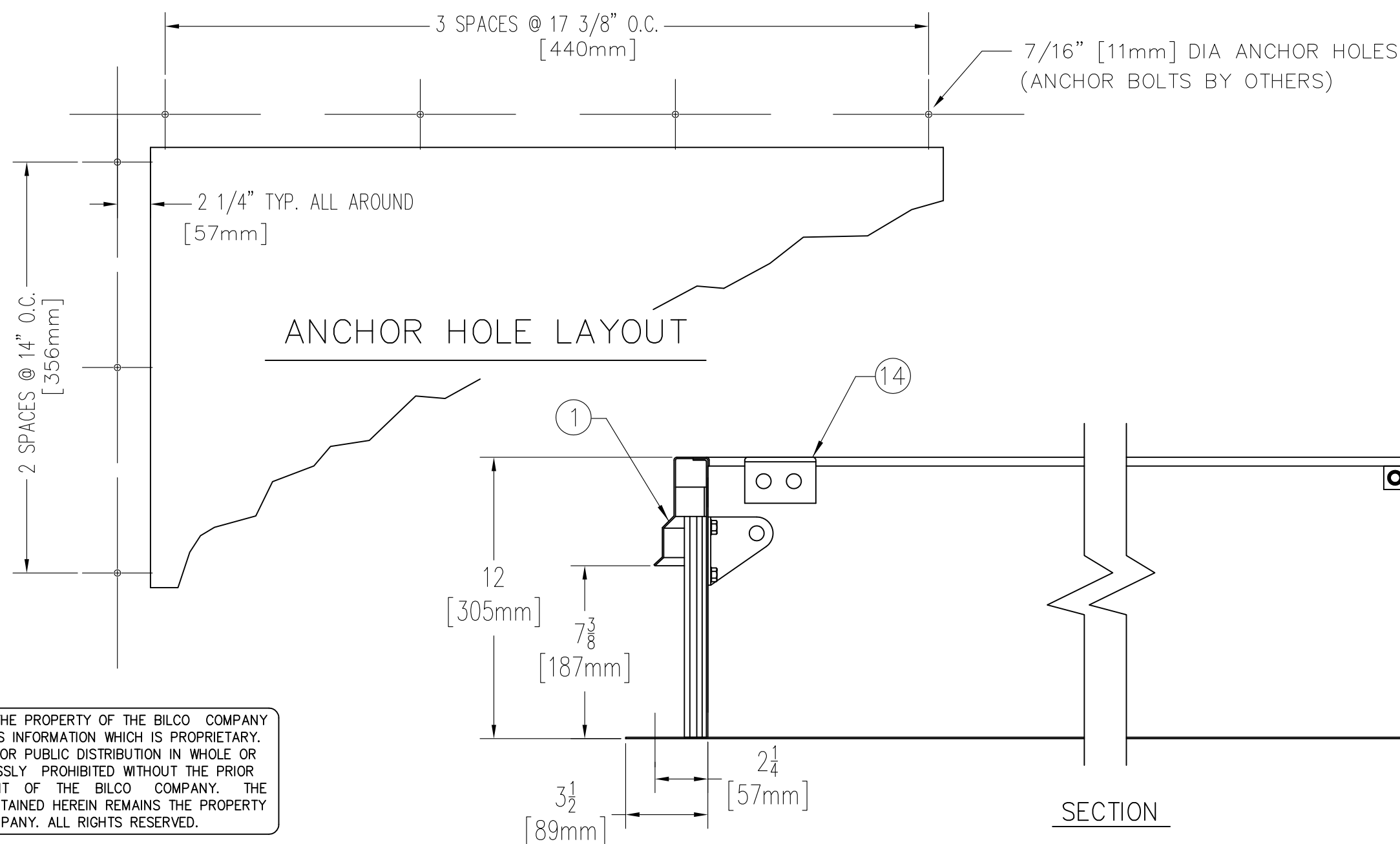


MIAMI-DADE COUNTY PRODUCT CONTROL APPROVED
 N.O.A. #11-0722.10 EXPIRES 12/02/14
 FILE CLASSIFICATION: HIGH VELOCITY HURRICANE ZONE
 IMPACT RATE: LARGE AND SMALL MISSILE IMPACT

FLORIDA PRODUCT APPROVAL # FL15110



SECTION

SPECIFICATIONS

- FRAME W/ CAPFLASHING (CORNERS FULL WELDED)
 NB-20 - 14 GAUGE P.B. GALV. STEEL
 NB-50 - 11 GAUGE ALUMINUM
- PINTLE HINGE
- GASKET (ALL AROUND COVER)
- COVER GAUGE
 NB-20 - 14 GAUGE P.B. GALV. STEEL
 NB-50 - 11 GAUGE ALUMINUM
- COVER LINER
 NB-20 - 22 GAUGE P.B. GALV. STEEL
 NB-50 - 18 GAUGE ALUMINUM
- LIFTING MECHANISM WITH REINFORCED COMPOSITE TUBES AND COMPRESSION SPRINGS
- 1" RIGID FIBERBOARD INSULATION
- SLAM LATCH (2 POINT)
- INSIDE AND OUTSIDE HANDLES W/ PADLOCK HASPS
- ARM GUIDE BRACKET
- 1" THICK FIBERGLASS COVER INSULATION
- HOLD OPEN ARM W/ RED VINYL GRIP
- NEOPRENE GASKET
- LOCK STRIKE & PADLOCK HASP
- BILCLIP® FLASHING SYSTEM
- GUIDE ARM

SHOP FINISH:

STEEL: RED OXIDE PRIMER
 ALUMINUM: MILL FINISH
 HARDWARE: ZINC PLATED & CHROMATE SEALED
 (UNLESS OTHERWISE SPECIFIED)

THIS PRODUCT MAY BE INSTALLED ON EITHER A FLAT OR SLOPING ROOF. WHEN INSTALLED ON A SLOPE, THE HINGE SIDE MUST RUN PARALLEL WITH THE SLOPE. IF SLOPE EXCEEDS 30°, ADVISE FACTORY FOR MODIFICATION.

CUSTOMER:

P.O. N°

JOB:

SALES REP:

Manufacturers of Doors for Special Services
Bilco® THE BILCO COMPANY
 New Haven, Connecticut 06505

SINGLE LEAF ROOF SCUTTLE TYPE NB-HZ SIZE 2'-6" x 4'-6"

QTY	TYPE	METAL
<input type="checkbox"/>	NB-20 HZ	STEEL COVER/STEEL FRAME
<input type="checkbox"/>	NB-50 HZ	ALUM. COVER/ALUM. FRAME

THIS DRAWING IS THE PROPERTY OF THE BILCO COMPANY AND INCORPORATES INFORMATION WHICH IS PROPRIETARY. PUBLICATION AND/OR PUBLIC DISTRIBUTION IN WHOLE OR IN PART IS EXPRESSLY PROHIBITED WITHOUT THE PRIOR WRITTEN CONSENT OF THE BILCO COMPANY. THE INFORMATION CONTAINED HEREIN REMAINS THE PROPERTY OF THE BILCO COMPANY. ALL RIGHTS RESERVED.