

Note: Pass-through window is not designed for instrument washer rack return.

**BeliMed**

Infection Control

2325 Charleston Regional Parkway, Charleston, SC 29492  
Tel: (800) 457-4117 Web: www.belimed.us

## PTW-WDF2

PASS-THROUGH WINDOW WITH TALL DOOR

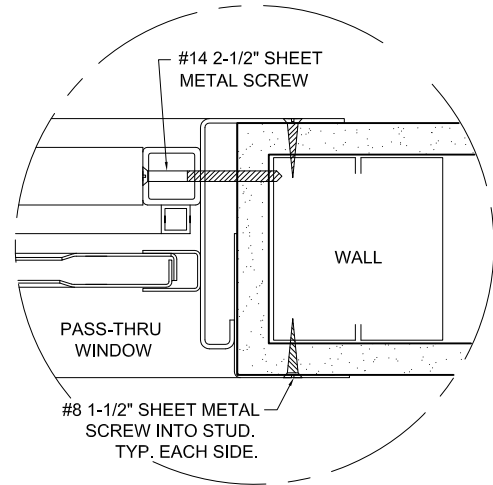
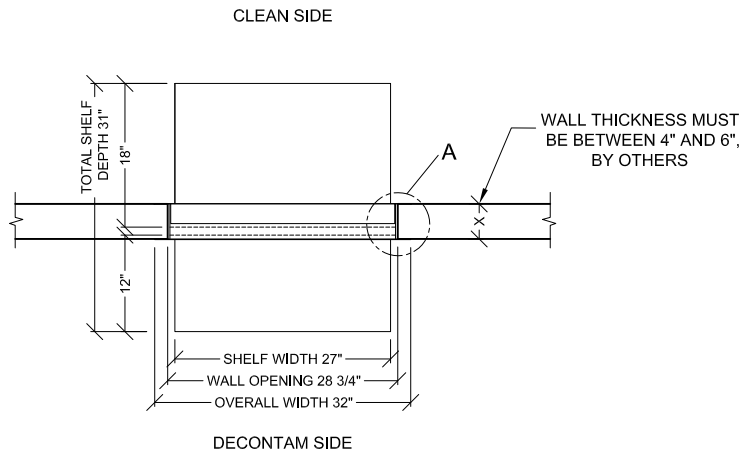
ISOMETRIC VIEW

Typical PTW-WDF2 Pass-Through Window  
with tall door.

Dwg. No. : CUT-PTW-WDF2 Rev. : D

Drawn By : J. PRICE Date : 8/14/13

Scale : NTS Page : 1 of 2

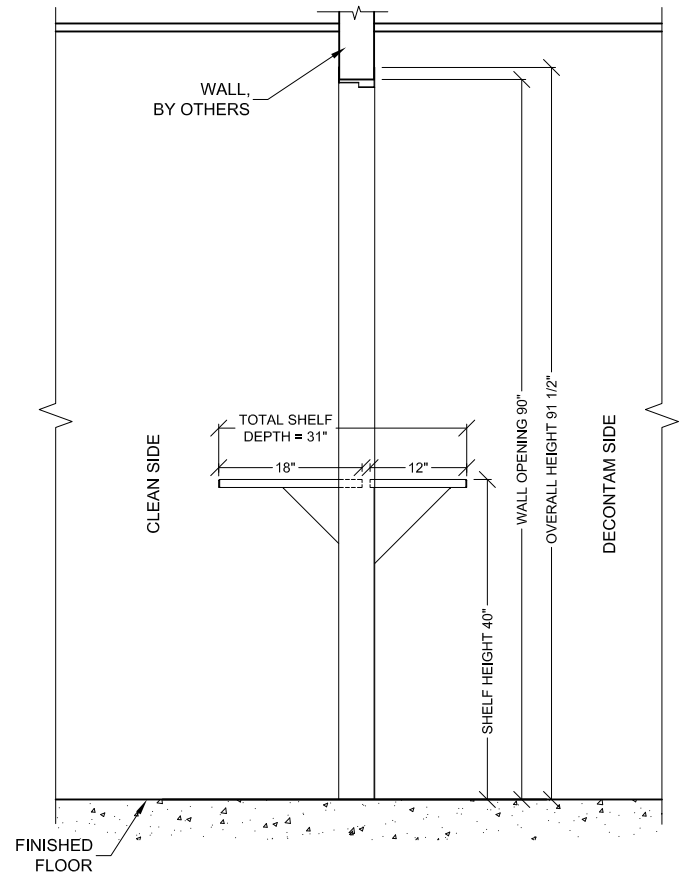
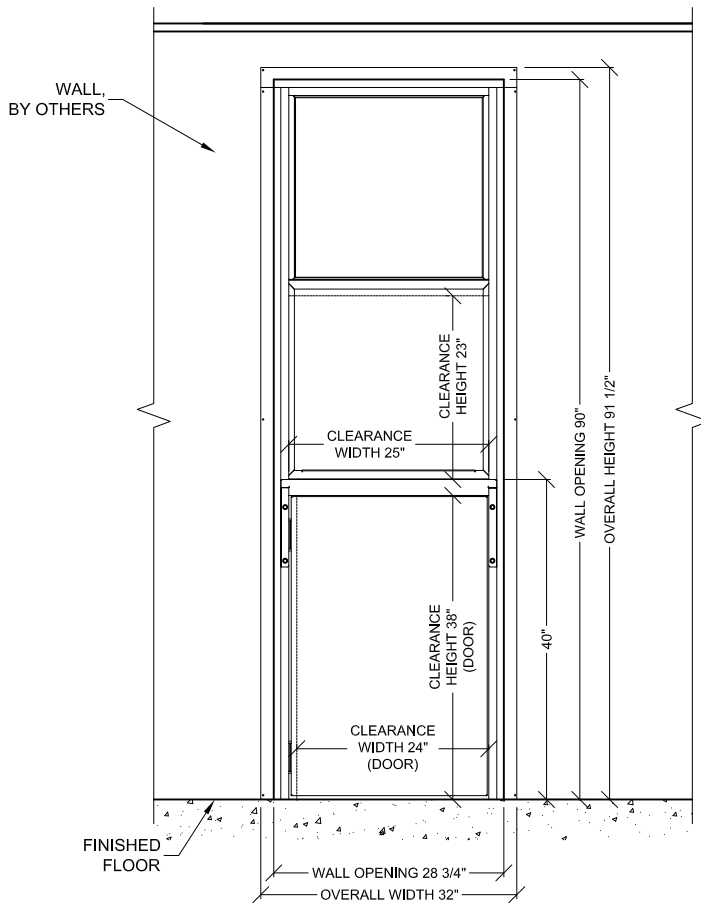


## PLAN VIEW

PTW-WDF2 PASS-THROUGH WINDOW WITH TALL DOOR

## ATTACHMENT DETAIL "A"

(NTS)



## FRONT ELEVATION

PTW-WDF2 PASS-THROUGH WINDOW WITH TALL DOOR

## SIDE ELEVATION

PTW-WDF2 PASS-THROUGH WINDOW WITH TALL DOOR

**BeliMed**

Infection Control

2325 Charleston Regional Parkway, Charleston, SC 29492  
Tel: (800) 457-4117 Web: [www.belimed.us](http://www.belimed.us)

## PTW-WDF2

PASS-THROUGH WINDOW WITH TALL DOOR

TECHNICAL DRAWING

Typical PTW-WDF2 Pass-Through Window  
with tall door.

Dwg. No. :	CUT-PTW-WDF2	Rev. :	D
Drawn By :	J. PRICE	Date :	8/14/13
Scale :	1/2" = 1'	Page :	2 of 2