

PBJMS SERIES WITH MICROSWITCH



EASY INSTALLATION
1¾" x 4½" JAMB STYLE
STAINLESS STEEL

Quality
Intelligence
Precision

The PBJMS Series is a practical solution to guide rail applications. The narrow body allows for a clean sleek look without the installation of a larger plate or bollard.

- Microswitch design allows for easy installation
- Beveled edges provide a tamper and vandal-proof solution
- Universal touch area at any "push" location
- Stainless steel finish is scratch/scuff resistant and will not deteriorate or rust
- Text and logo are baked onto the surface for maximum durability
- Available in two styles; with plain logo or logo and text

WWW.BEASENSORS.COM

TECHNICAL SPECS

- A. 16 gauge, 304 2B Stainless Steel Faceplate
- B. 1/8" thick, Aluminum Back Plate
- C. Stainless Steel 6-32 x 1: Allen head mounting screws
- D. C&K Switch: Single-pole, 1A

PBJMS SERIES FAMILY OF PRODUCTS

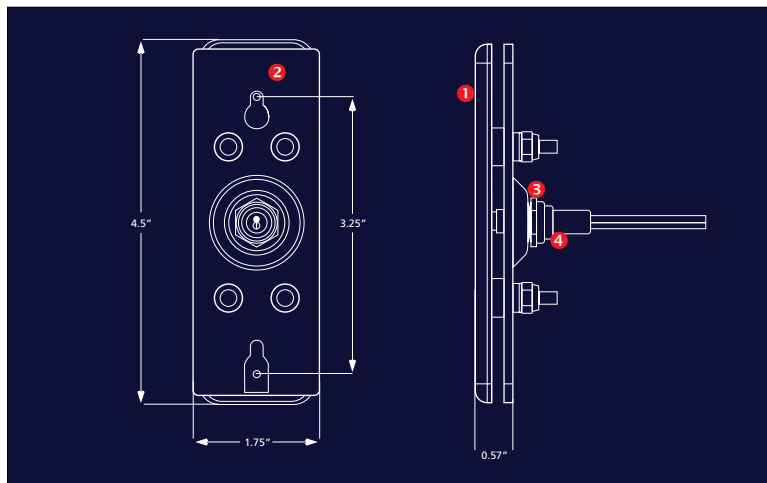


10PBJMS1 - Text and Logo



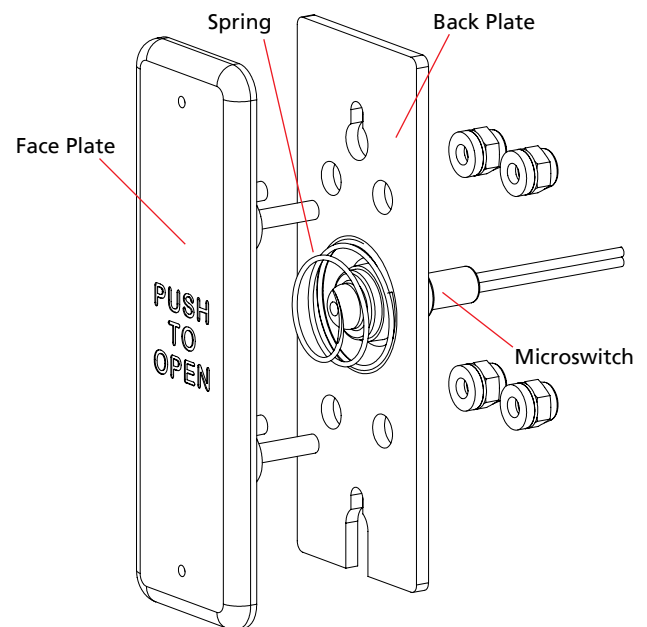
10PBJMSLL - Logo only

COMPONENTS



- 1 Front Plate
- 2 Back Plate
- 3 Weatherboot
- 4 Microswitch

PBJMS SERIES DETAILS

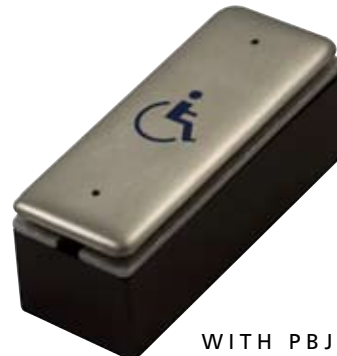


MOUNT BOX



NOTE: WIRELESS TRANSMITTERS FOR THE RF-433 WILL NOT FIT

SURFACE MOUNT BOX



WITH PBJMSLL PUSH PLATE
(Sold Separately)

RELATED PRODUCTS



10BOXJAMBST
Standard Jamb
Mount Box



BEA Guide Rails
Various Models,
Bronze, Black,
and Chrome