



NOVA PRO



G* GRASS®

NOVA PRO DRAWER SYSTEM

The premier double-wall drawer system that offers innovative functionality, timeless design and maximum efficiency.





The tried and tested Nova Pro Drawer System offers outstanding quality, maximum design freedom and innovative functional solutions for modern cabinet construction.

Expect Excellence

The double-walled steel drawer system is engineered to exceed industry standards for weight capacity and longevity.



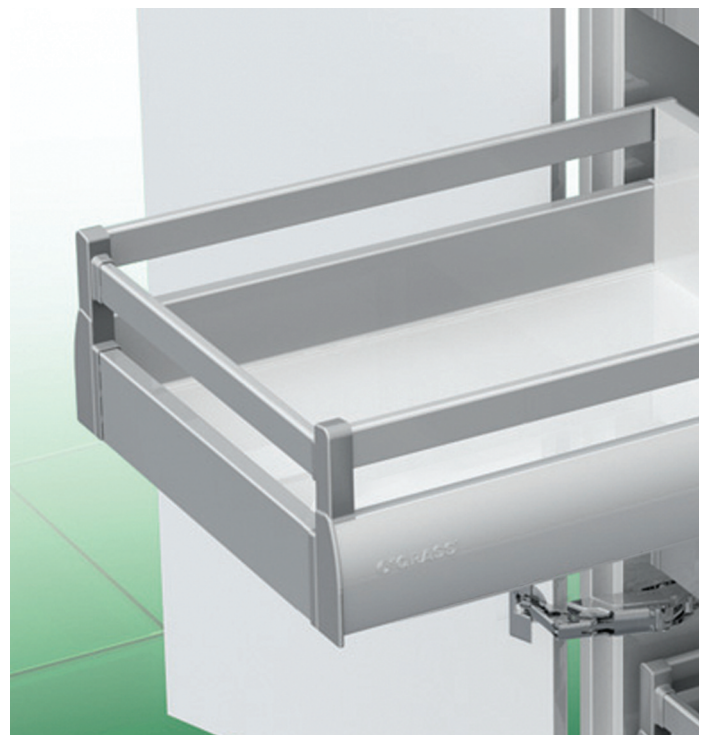
NOVA PRO DRAWER SYSTEM

Sophisticated. Intelligent. Advanced.
NOVA PRO. Engineered to the highest standards.



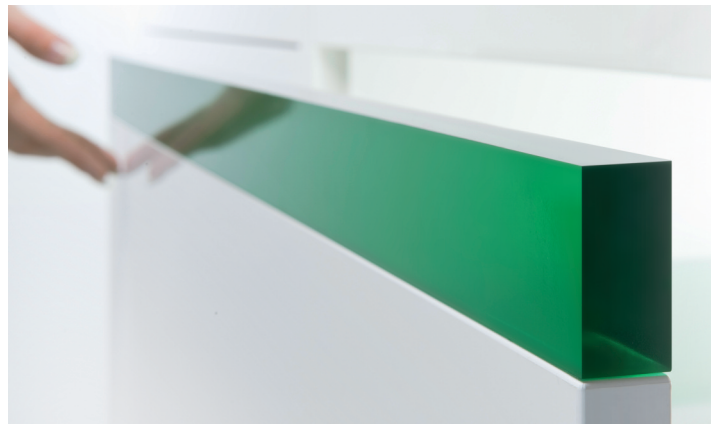
Stylish design with a variety of options

From traditional to modern to every where in between Nova Pro offers finishes that enhance all kitchen designs. Sleek contoured sides are offered in a champagne finish and a metallic finish. The interior vertical walls are designed to provide maximum storage and deep drawers can be created with side rails and divider rails.



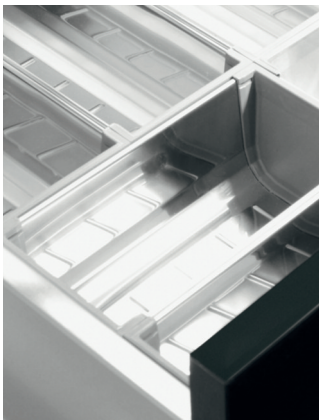
NOVA PRO DRAWER SYSTEM

Nova Pro offers maximum functionality, timeless design and outstanding aesthetic appeal. From the slide to the add-on rails to the electronic opening systems you can see why Nova Pro reigns supreme.



A place for everything and everything in its place.

Whether it's food items, beverages, or kitchen utensils, everything can be stored away and instantly retrieved. With Nova Pro's divider systems and drawer organizers this task is easier than ever. And all Nova Pro organization is designed to your specifications.



Synchronization achieves smooth operation without a sound.

Synchronized full-extension drawer slides give a superb gliding action for today's Nova Pro. This mechanical synchronization of each individual slide ensures enhanced comfort and movement without annoying sounds or resistance. And the integrated Soft-close technology gently slows the closing action of the drawer and silently pulls it to the fully closed position.



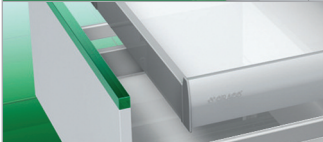
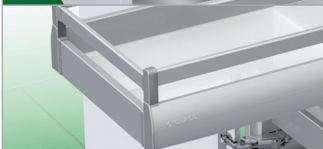


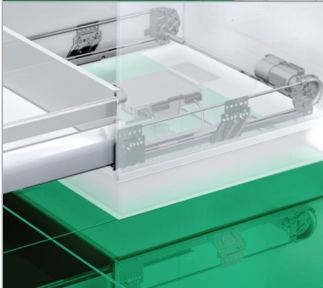
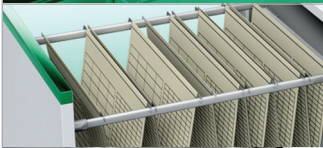
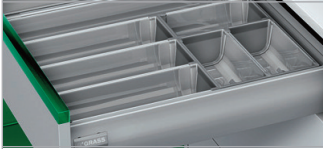
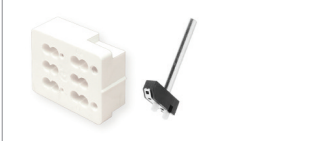
Opening Systems for cabinets without handles

Nova Pro offers three innovative opening systems for handle-free furniture.

With Tipmatic Plus, a mechanical opening system, it is possible to design large fronts that will open with a light touch.

Sensomatic, an electro-mechanical opening system, combines the advantages of handle-free opening with the supreme action of the soft-closing system.

Sensotronic is the world's first intelligent drawer that seems to read your mind. Drawer and pull-outs open and close electronically with the slightest touch.

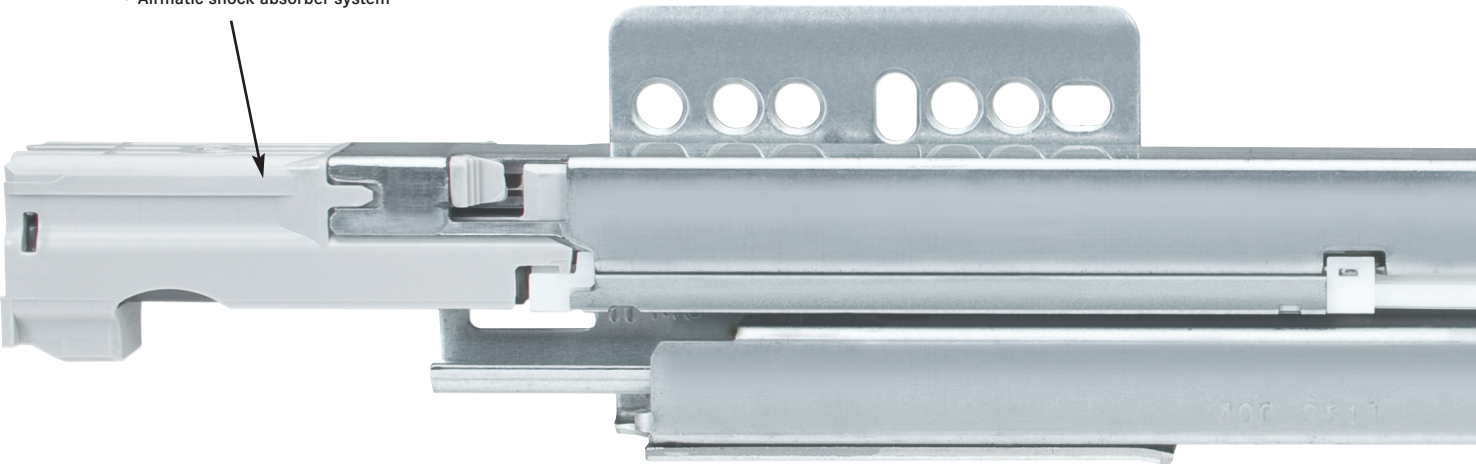
	Description	Page
	Technical Information	6
	Standard Drawer P920 Series <ul style="list-style-type: none"> • 90 mm (3 1/2") • Soft-close 	10
	Standard Drawer with Railings P920 Series <ul style="list-style-type: none"> • 90 mm (3 1/2") • Soft-close 	12
	Interior Drawer P920 Series <ul style="list-style-type: none"> • 90 mm (3 1/2") • Soft-close 	14
	Interior Drawer with Railings P920 Series <ul style="list-style-type: none"> • 90 mm (3 1/2") • Soft-close 	16
	Deep Drawer P930 Series <ul style="list-style-type: none"> • 122 mm (4 3/4") • Soft-close 	18
	Deep Drawer with Railings P930 Series <ul style="list-style-type: none"> • 122 mm (4 3/4") • Soft-close 	20
	Opening Systems for handle-free cabinets Sensotronic Sensomatic Tipmatic Plus	22 24 26 36
	File Railing <ul style="list-style-type: none"> • Complements Nova Pro Metallic finish • File railing system is independent from drawer system 	38
	Drawer Organization <ul style="list-style-type: none"> • Magic Sorto • Stainless steel trays • Modular expandable system 	39
	Accessories <ul style="list-style-type: none"> • Drawer stabilizer mechanism • Accessories • Tools 	40

Features

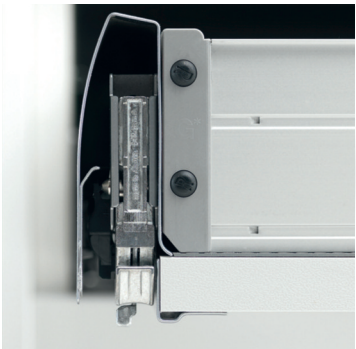


- Synchronized full-extension drawer slide
- Airmatic shock absorber system integrated into the cabinet member slows the momentum of the closing drawer
- 3-dimensional front adjustment for perfect alignment
- Telescoping cabinet profiles provide a smooth extension and reduced side play
- Drawer front can be installed or removed with out the use of tools
- Width of the bottom and back panel is the same

• Airmatic shock absorber system



Double wall sides guarantee optimum lateral stability, synchronized movement and a smooth quiet running action.

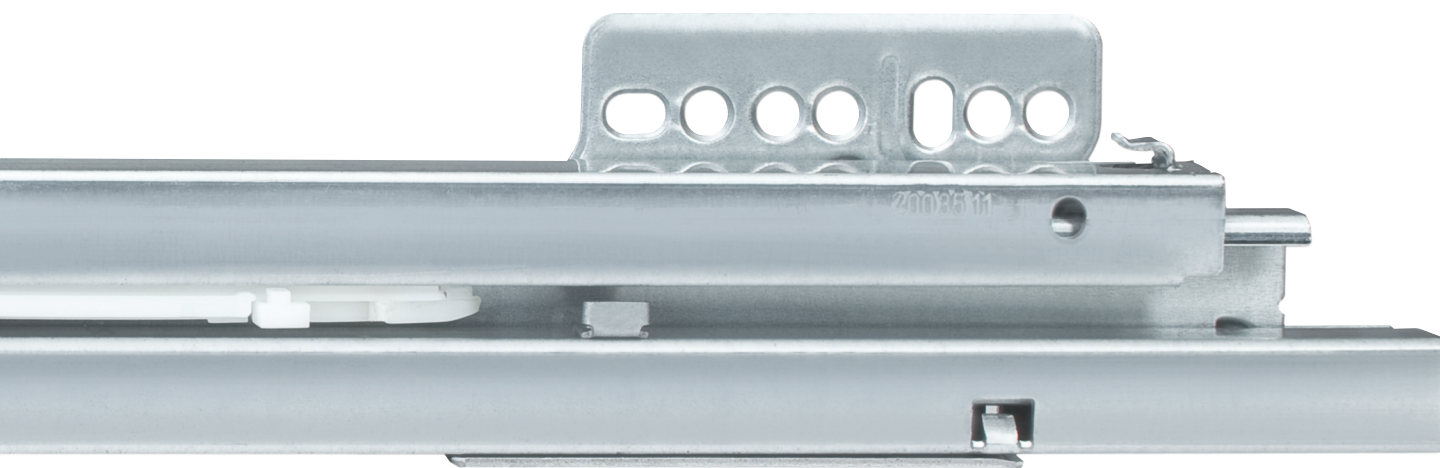


Flat interior side walls provide maximum storage.



Features

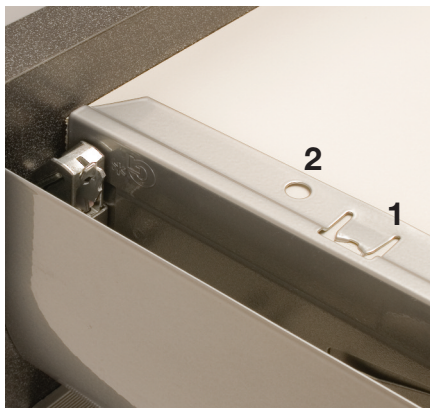
- Vertical interior walls designed for maximum storage
- Color choices of Champagne or Metallic
- Drawer side height of 90mm (3 1/2") and 122mm (4 3/4")
- High load carrying capacities of 84 lbs. and 154 lbs.
- Side and divider railings for personal organization
- Tilt angle adjustment integrated in drawer slide



Three innovative opening systems for handle free drawers, Sensotronic, Sensomatic and Tipmatic Plus



Installation & Removal



Drawer bottom can be secured in 2 ways:

- 1 By depressing barbed tabs with a manual punch.
- 2 With wood screws.

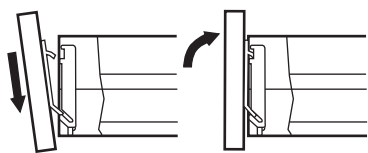


Front brackets are attached to the drawer front with screws or dowels. Position the drawer front in place, push down. Spring loaded catches secure the front to the drawer sides.



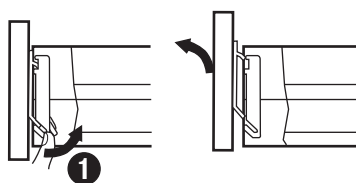
The Nova Pro drawers can be installed or removed with just one movement. No levers to press.

Drawer Front Assembly



Assembly

- 1 Angle the front panel with the installation hooks into the lower slanted slot. (0-positioning with the installation hooks).
- 2 Tilt the front in and...
- 3 ...Press down.



Removing

- 1 Press the catch 1 and ...
- 2 ...Remove front panel.

Side Railing and Divider Railing



1. Side railing and divider railing installation and removal are tool-free



2. Side railings provide tilt adjustment - tool-free or with screwdriver.



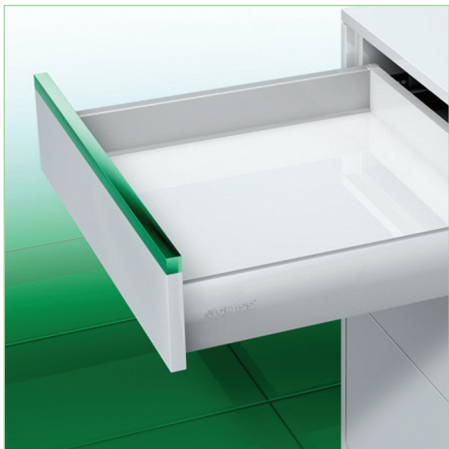
3. Dividers are moved by depressing the tabs on the end caps which index into holes underneath the side rails.

Adjustment

Height adjustment with eccentric screw	Side adjustment	Front tilt angle adjustment
<ul style="list-style-type: none"> Height adjustment: slightly release screw 2 and move front to the desired height position using eccentric screw 3. Adjustment range $\pm 2\text{mm}$ Tighten screw 2 	<ul style="list-style-type: none"> Side adjustment: slightly push clamping lever 1 towards the back, lift front slightly and move across serration, adjustment range $\pm 1.5\text{ mm}$ Release clamping lever 	<ul style="list-style-type: none"> New for drawer sides height 122 Tilt adjustment is easily accessible on the inside of the drawer. Tilt angle adjustment is achieved by changing the position of the drawer.

Nova Pro Standard Drawer

P920 series - 90mm [3 1/2"] side height



The foundation drawer of the Nova Pro system.

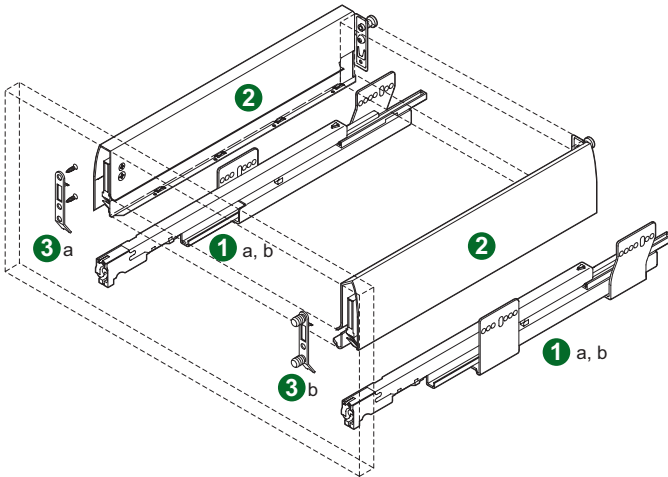
- Full extension for maximum access to drawer contents
- Available load capacities: 40kg [88 lbs.] and 70kg [154 lbs.] dynamic
- Exclusive Airmatic controlled closing
- Tool-free drawer front removal and installation
- Cam height adjustment and tool-free side adjustment of drawer front
- Available in high gloss Champagne or Metallic finish

How to specify hardware:

1. Select cabinet member set - options are length and load capacity
2. Select matching drawer member set - options are Champagne or Metallic finish
3. Select front brackets - options are screw-on or dowelled (for press-in installation)

Components

ID	Description	Length *	Reference No.	Item No.	PU
1a	Cabinet member set 40 kg. [88 lb.] dynamic capacity	270 [11"]	P904-270	63663-04	10
		350 [14"]	P904-350	63665-04	10
		400 [16"]	P904-400	63666-04	10
		450 [18"]	P904-450	63667-04	10
		500 [20"]	P904-500	63668-04	10
		550 [22"]	P904-550	63669-04	10
1b	Cabinet member set 70 kg. [154 lb.] dynamic capacity	450 [18"]	P907-450	63711-04	10
		500 [20"]	P907-500	63714-04	10
		550 [22"]	P907-550	63717-04	10
3a	Screw-on bracket	2 req'd. per drawer	7600-SCR-PB	21855-87	100
3b	Dowelled bracket		7600-DWL-PB	21854-87	100
			7600-DWL	21854-42	100



ID	Description	Length*	Metallic		PU
2	Drawer member set 90mm [3 1/2"]	270 [11"]	P920-270-R9006	65000-04	10
		350 [14"]	P920-350-R9006	65006-04	10
		400 [16"]	P920-400-R9006	65009-04	10
		450 [18"]	P920-450-R9006	65012-04	10
		500 [20"]	P920-500-R9006	65015-04	10
		550 [22"]	P920-550-R9006	65018-04	10
2a	U-cover cap (1)	All	7600-CAP-R9006	25821-41	50

Champagne		PU
P920-270-G0028	68549-04	10
P920-350-G0028	68552-04	10
P920-400-G0028	68555-04	10
P920-450-G0028	68558-04	10
P920-500-G0028	68561-04	10
P920-550-G0028	68564-04	10

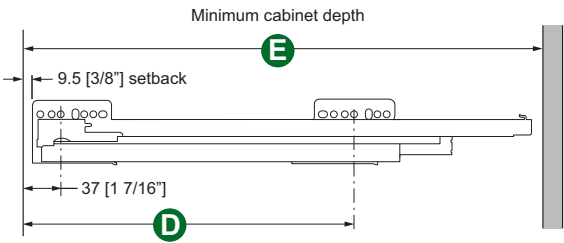
*Inch equivalent length is nominal

(1) Applicable to metallic drawer members only

PB = (20) Brackets per polybag

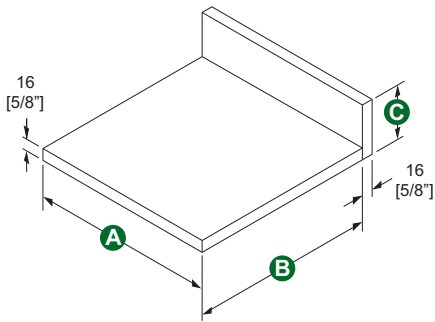
PU = Packing Unit

Drawer parts				
Qty.	Part	A - width	B - length	C - height
1	Bottom	Inside cabinet width - 58 [2 5/16"]	See chart	
1	Back	Inside cabinet width - 58 [2 5/16"]		84 [3 5/16"]



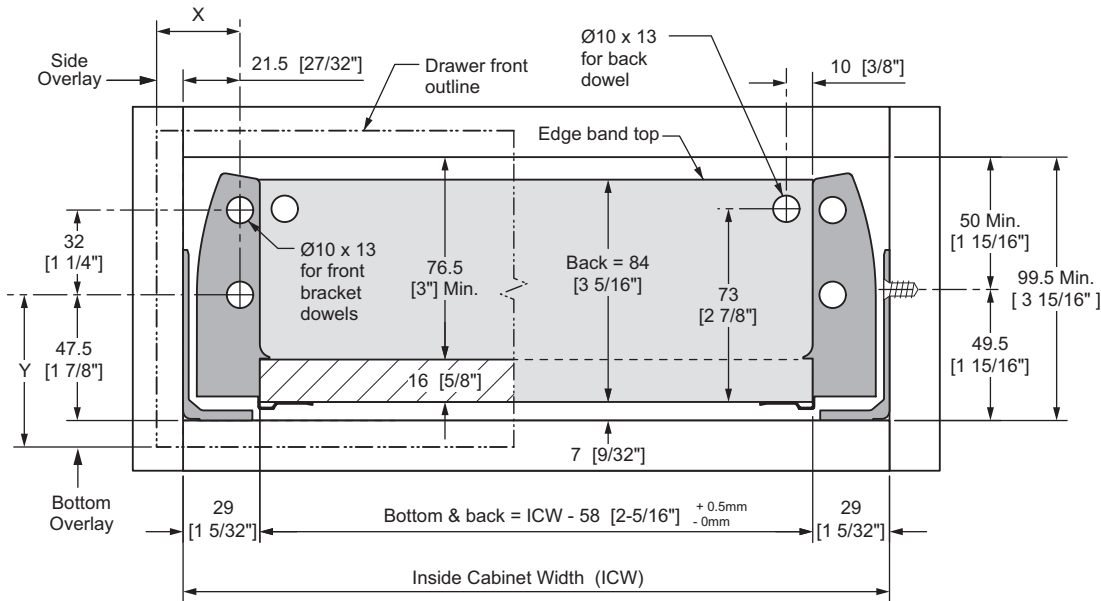
Attach with 13mm [1/2"] long Euro screws or #7 x 5/8" wood screw. Use 4 screws per side on 70kg [154 lb.] slides.

Drawer bottom length B	
Slide length	Bottom length
270 [11"]	251 [9 7/8"]
350 [14"]	331 [13 1/16"]
400 [16"]	381 [15"]
450 [18"]	431 [16 15/16"]
500 [20"]	481 [18 15/16"]
550 [22"]	531 [20 7/8"]



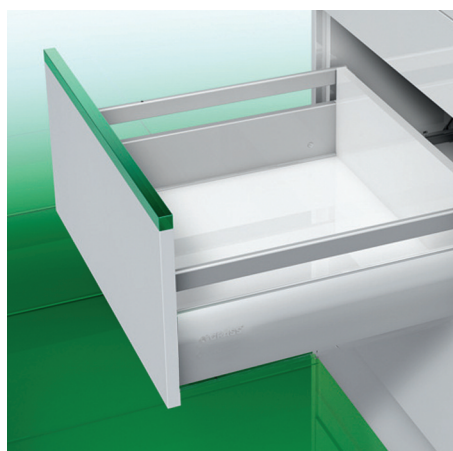
Slide Length	D	E
270 [11"]	197 [7 3/4"]	275 [10 13/16"]
350 [14"]	261 [10 1/4"]	355 [14"]
400 [16"]	261 [10 1/4"]	405 [15 15/16"]
450 [18"]	325 [12 13/16"]	455 [17 15/16"]
500 [20"]	325 [12 13/16"]	505 [19 7/8"]
550 [22"]	325 [12 13/16"]	555 [21 7/8"]

Assembly Details



Nova Pro Standard Drawer with Railings

P920 series - 90mm [3 1/2"] side height



Adding a railing kit to the Standard Drawer increases height and enables organization with Nova Pro divider railing kits.

- Full extension for maximum access to drawer contents
- Available load capacities: 40kg [88 lbs.] and 70kg [154 lbs.] dynamic
- Tool-free drawer front, rail and divider removal and installation
- Cam height adjustment and tool-free side adjustment of drawer front
- Railings provide tilt adjustment of the drawer front

How to specify hardware:

1. Select cabinet member set - options are length and load capacity
2. Select matching length drawer member set - options are Champagne or Metallic finish
3. Select front brackets - options are screw-on or dowelled (for press-in installation)
4. Select corresponding length railing set
5. Select divider set that is equal to or less than overall cabinet width

Components

ID	Description	Length*	Reference No.	Item No.	PU
1a	Cabinet member set 40 kg. [88 lb.] dynamic capacity	400 [16"]	P904-400	63666-04	10
		450 [18"]	P904-450	63667-04	10
		500 [20"]	P904-500	63668-04	10
		550 [22"]	P904-550	63669-04	10

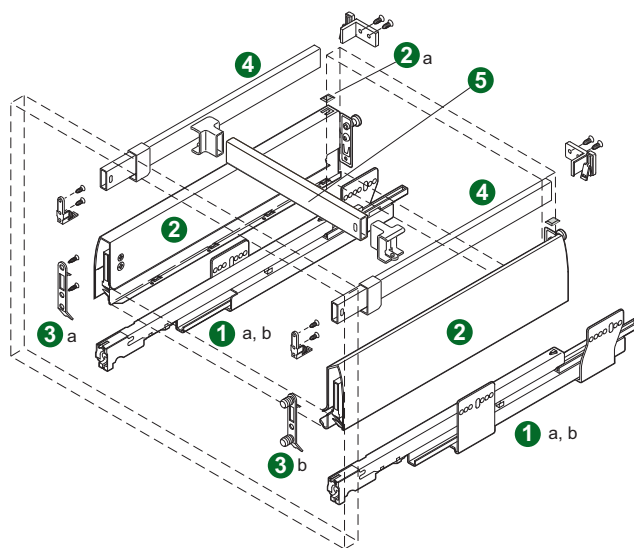
1b	Cabinet member set 70 kg. [154 lb.] dynamic capacity	450 [18"]	P907-450	63711-04	10
		500 [20"]	P907-500	63714-04	10
		550 [22"]	P907-550	63717-04	10

3a	Screw-on bracket	2 req'd. per drawer	7600-SCR-PB	21855-87	100
3b	Dowelled bracket		7600-DWL-PB	21854-87	100
			7600-DWL	21854-42	100

ID	Description	Length*	Metallic		PU
2	Drawer member set 90mm [3 1/2"]	400 [16"]	P920-400-R9006	65009-04	10
		450 [18"]	P920-450-R9006	65012-04	10
		500 [20"]	P920-500-R9006	65015-04	10
		550 [22"]	P920-550-R9006	65018-04	10
2a	U-cover cap (1)	All	7600-CAP-R9006	25821-41	50

4	Side railing set with tilt adjustment	400 [16"]	7607-400-R9006	45860-04	10
		450 [18"]	7607-450-R9006	45861-04	10
		500 [20"]	7607-500-R9006	45862-04	10
		550 [22"]	7607-550-R9006	45863-04	10

5	Divider railing set Select by overall cabinet width	610 [24"]	7602-610-R9006	68814-04	10
		914 [36"]	7602-914-R9006	69151-04	10
		1200 [47"]	7602-1200-R9006	51661-04	10



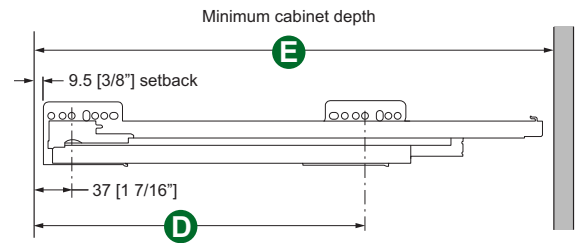
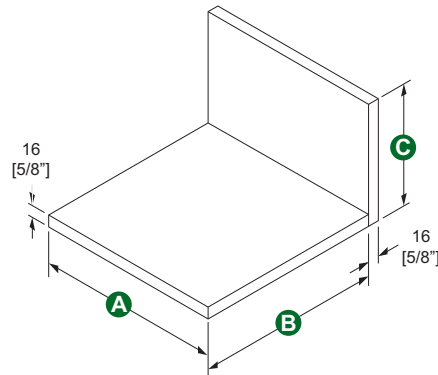
Champagne		PU
P920-400-G0028	68555-04	10
P920-450-G0028	68558-04	10
P920-500-G0028	68561-04	10
P920-550-G0028	68564-04	10

7607-400-G0028	68579-04	10
7607-450-G0028	68581-04	10
7607-500-G0028	68582-04	10
7607-550-G0028	68583-04	10

7602-610-G0028	68585-04	10
7602-914-G0028	68587-04	10
7602-1200-G0028	68590-04	10

Drawer parts				
Qty.	Part	A - width	B - length	C - height
1	Bottom	Inside cabinet width - 58 [2 5/16"]	See chart	
1	Back	Inside cabinet width - 58 [2 5/16"]		149 [5 7/8"]

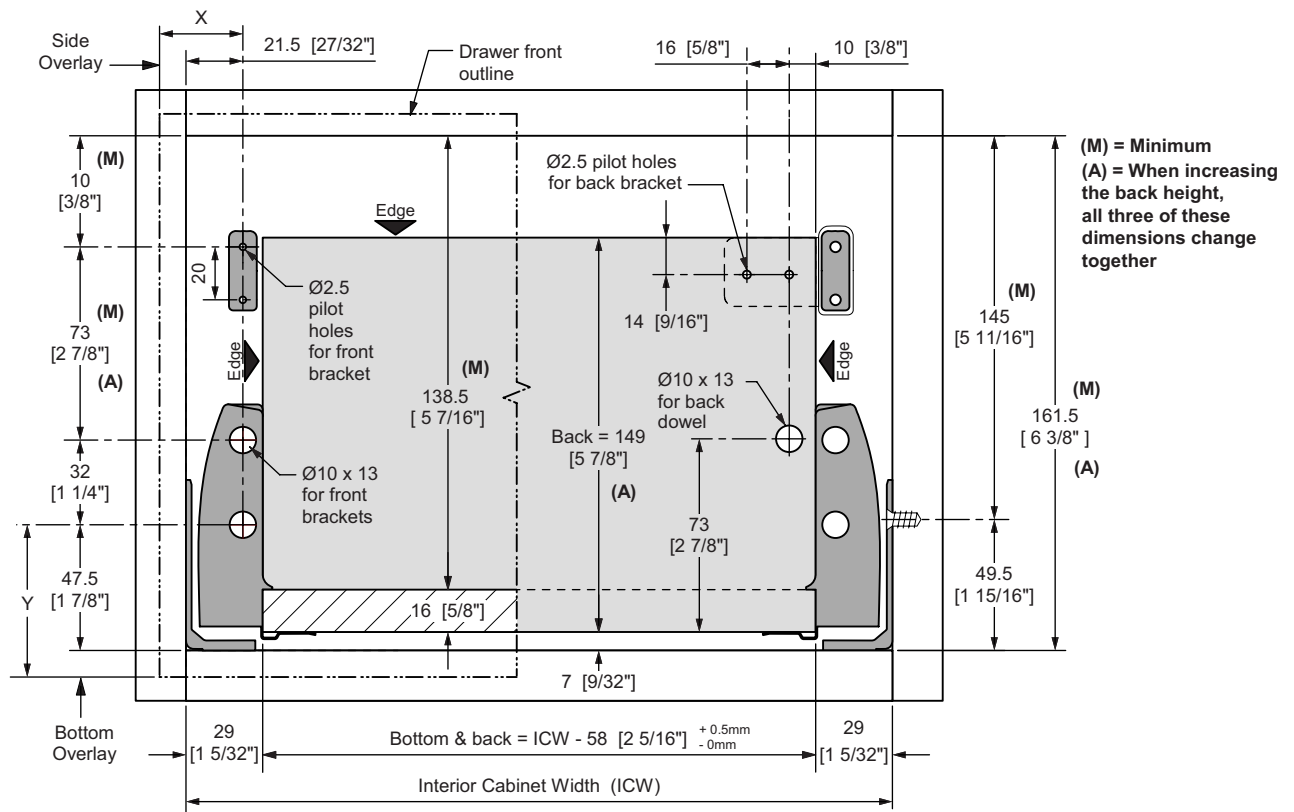
Drawer bottom length B	
Slide length	Bottom length
400 [16"]	381 [15"]
450 [18"]	431 [16 15/16"]
500 [20"]	481 [18 15/16"]
550 [22"]	531 [20 7/8"]



Attach with 13mm [1/2"] long Euro screws or #7 x 5/8" wood screw. Use 4 screws per side on 70kg [154 lb.] slides.

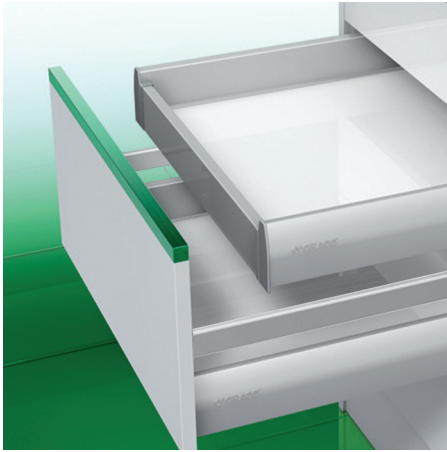
Slide Length	D	E
400 [16"]	261 [10-1/4"]	405 [15 15/16"]
450 [18"]	325 [12 13/16"]	455 [17 15/16"]
500 [20"]	325 [12 13/16"]	505 [19 7/8"]
550 [22"]	325 [12 13/16"]	555 [21 7/8"]

Assembly Details



Nova Pro Interior Drawer

P920 series - 90mm [3 1/2"] side height



Adding an aluminum front panel and coordinated brackets converts a Standard Drawer into an Interior Roll Out Drawer.

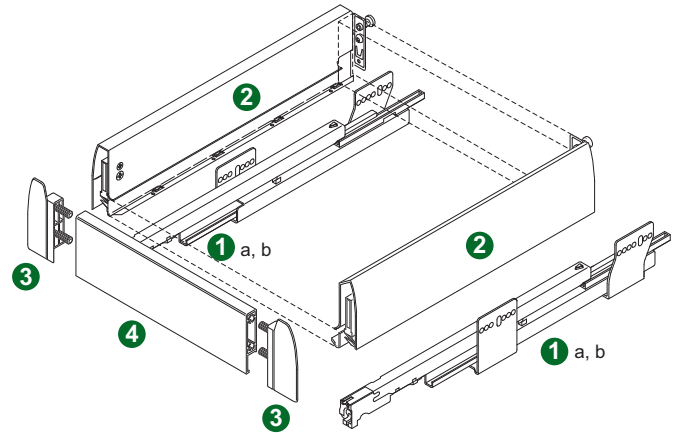
- Full extension for maximum access to drawer contents
- Available load capacities: 40kg [88 lbs.] and 70kg [154 lbs.] dynamic
- Exclusive Airmatic controlled closing
- Tool-free front removal and installation
- Available in high gloss Champagne or Metallic finish

How to specify hardware:

1. Select cabinet member set - options are length and load capacity
2. Select matching drawer member set - options are Champagne or Metallic finish
3. Select panel holder set
4. Select front panel that is equal to or less than overall cabinet width

Components

ID	Description	Length*	Reference No.	Item No.	PU
1a	Cabinet member set 40 kg. [88 lb.] dynamic capacity	270 [11"]	P904-270	63663-04	10
		350 [14"]	P904-350	63665-04	10
		400 [16"]	P904-400	63666-04	10
		450 [18"]	P904-450	63667-04	10
		500 [20"]	P904-500	63668-04	10
		550 [22"]	P904-550	63669-04	10
1b	Cabinet member set 70 kg. [154 lb.] dynamic capacity	450 [18"]	P907-450	63711-04	10
		500 [20"]	P907-500	63714-04	10
		550 [22"]	P907-550	63717-04	10



ID	Description	Length*	Metallic	PU
2	Drawer member set 90mm [3 1/2"]	270 [11"]	P920-270-R9006	65000-04
		350 [14"]	P920-350-R9006	65006-04
		400 [16"]	P920-400-R9006	65009-04
		450 [18"]	P920-450-R9006	65012-04
		500 [20"]	P920-500-R9006	65015-04
		550 [22"]	P920-550-R9006	65018-04
2a	U-cover cap (1)	All	7600-CAP-R9006	25821-41

3	Panel holder set	All	P620-R7016	66500-03	5
---	------------------	-----	------------	----------	---

7	Front panel Select by overall cabinet width	610 [24"]	7620-610-R9006	68813-03	5
		914 [36"]	7620-914-R9006	69153-03	5
		1200 [47"]	7620-1200-R9006	51147-03	5

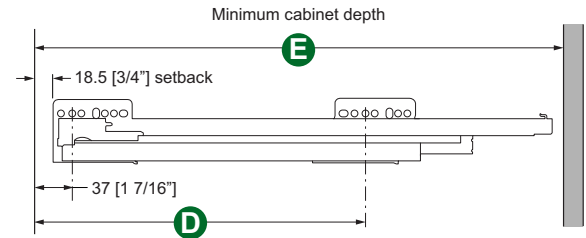
Champagne	PU
P920-270-G0028	68549-04
P920-350-G0028	68552-04
P920-400-G0028	68555-04
P920-450-G0028	68558-04
P920-500-G0028	68561-04
P920-550-G0028	68564-04

P620-R7006	68591-03	5
------------	----------	---

7620-610-G0028	68614-03	5
7620-914-G0028	68616-03	5
7620-1200-G0028	68618-03	5

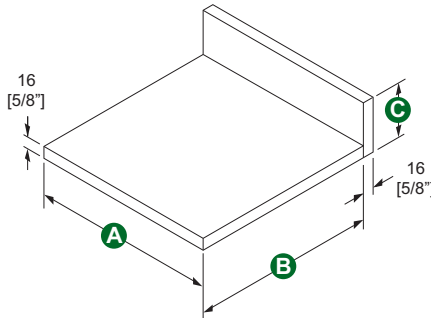
Drawer parts				
Qty.	Part	A - width(*)	B - length	C - height
1	Bottom	Inside cabinet width - 58 [2 5/16"]	See chart	
1	Back	Inside cabinet width - 58 [2 5/16"]		84 [3 5/16"]
1	Front	Inside cabinet width - 85 [3 3/8"]		Fixed

(*) If drawer member spacers are used, deduct their thickness from the inside cabinet width.



Attach with 13mm [1/2"] long Euro screws or #7 x 5/8" wood screw. Use 4 screws per side on 70kg [154 lb.] slides.

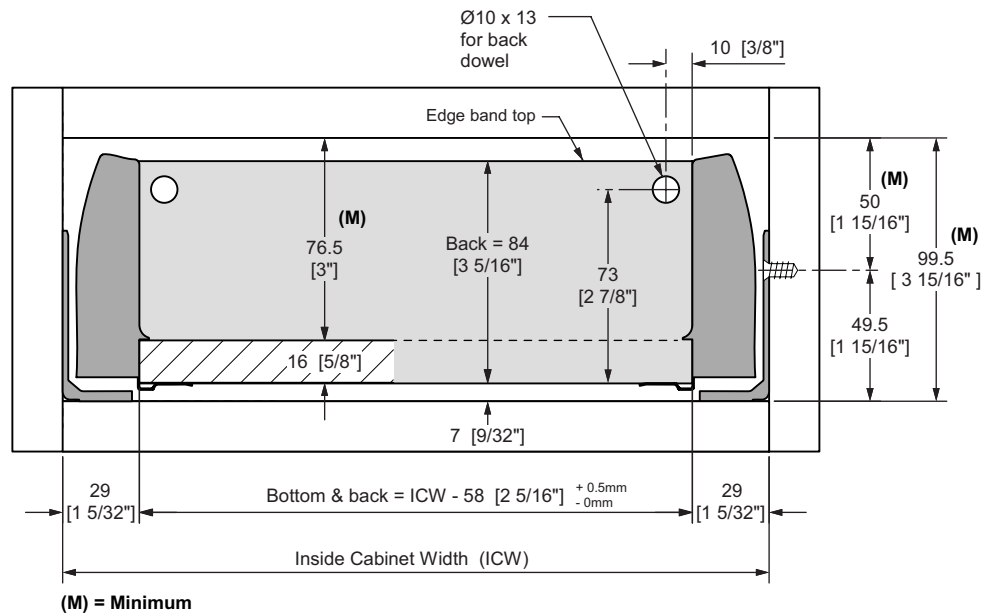
Drawer bottom length B	
Slide length	Bottom length
270 [11"]	251 [9 7/8"]
350 [14"]	331 [13 1/16"]
400 [16"]	381 [15"]
450 [18"]	431 [16 15/16"]
500 [20"]	481 [18 15/16"]
550 [22"]	531 [20 7/8"]



(1) If drawer member spacers are used, deduct their thickness from the inside cabinet width

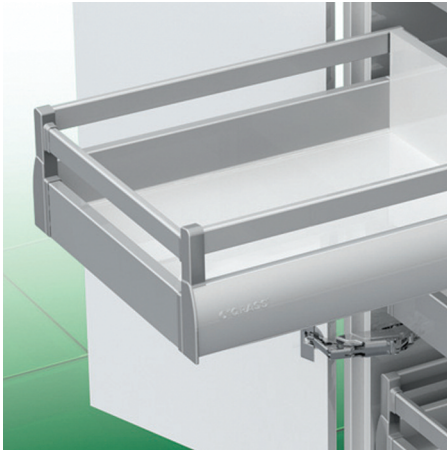
Slide Length	D	E
270 [11"]	197 [7 3/4"]	284 [11 3/16"]
350 [14"]	261 [10 1/4"]	364 [14 5/16"]
400 [16"]	261 [10 1/4"]	414 [16 5/16"]
450 [18"]	325 [12 13/16"]	464 [18 1/4"]
500 [20"]	325 [12 13/16"]	514 [20 1/4"]
550 [22"]	325 [12 13/16"]	564 [22 3/16"]

Assembly Details



Nova Pro Interior Drawer with Railings

P920 series - 90mm [3 1/2"] side height



Adding an aluminum front panel and coordinated brackets with a railing kit converts a Standard Drawer into an Interior Roll Out Drawer with increased height.

- Full extension for maximum access to drawer contents
- Available load capacities: 40kg [88 lbs.] and 70kg [154 lbs.] dynamic
- Tool-free railing and front removal and divider installation
- Available in high gloss Champagne or Metallic finish

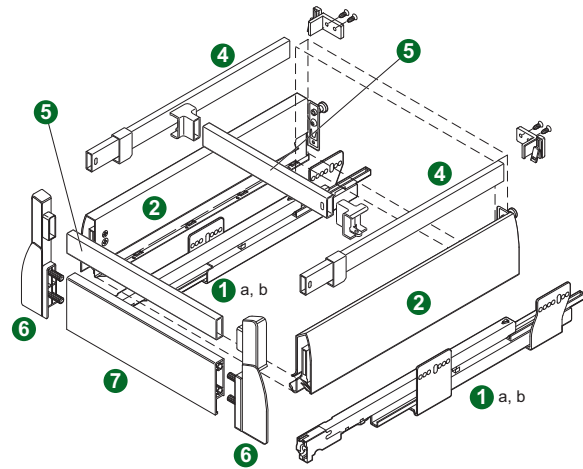
How to specify hardware:

1. Select cabinet member set - options are length and load capacity
2. Select matching drawer member set - options are Champagne or Metallic finish
3. Select corresponding length railing set
4. Select panel holder set
5. Select front panel that is equal to or less than overall cabinet width
6. Select divider set that is equal to or less than overall cabinet width

Components

ID	Description	Length*	Reference No.	Item No.	PU
1a	Cabinet member set 40 kg. [88 lb.] dynamic capacity	400 [16"]	P904-400	63666-04	10
		450 [18"]	P904-450	63667-04	10
		500 [20"]	P904-500	63668-04	10
		550 [22"]	P904-550	63669-04	10
	Cabinet member set 70 kg. [154 lb.] dynamic capacity	450 [18"]	P907-450	63711-04	10
		500 [20"]	P907-500	63714-04	10
		550 [22"]	P907-550	63717-04	10

ID	Description	Length*	Metallic	PU
2	Drawer member set 90mm [3 1/2"]	400 [16"]	P920-400-R9006	65009-04
		450 [18"]	P920-450-R9006	65012-04
		500 [20"]	P920-500-R9006	65015-04
		550 [22"]	P920-550-R9006	65018-04
2a	U-cover cap (1)	All	7600-CAP-R9006	25821-41
4	Side railing set with tilt adjustment	400 [16"]	7607-400-R9006	45860-04
		450 [18"]	7607-450-R9006	45861-04
		500 [20"]	7607-500-R9006	45862-04
		550 [22"]	7607-550-R9006	45863-04
5	Divider railing set Select by overall cabinet width	610 [24"]	7602-610-R9006	68814-04
		914 [36"]	7602-914-R9006	69151-04
		1200 [47"]	7602-1200-R9006	51661-04
6	Panel holder set	All	P620+rail-R7016	66501-03
7	Front panel Select by overall cabinet width	610 [24"]	7620-610-R9006	68813-03
		914 [36"]	7620-914-R9006	69153-03
		1200 [47"]	7620-1200-R9006	51147-03

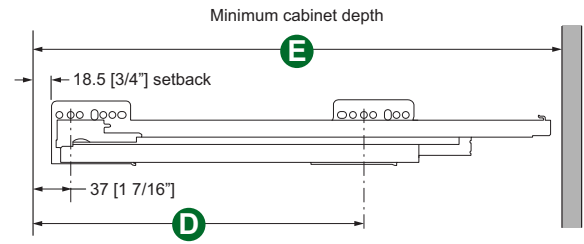
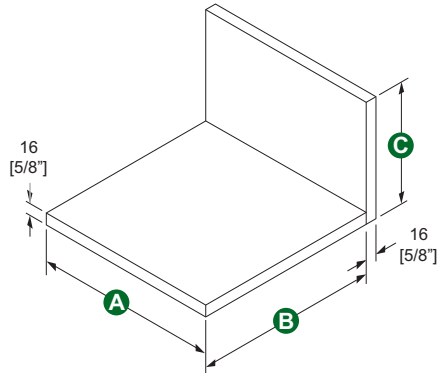


Champagne	PU
P920-400-G0028	68555-04
P920-450-G0028	68558-04
P920-500-G0028	68561-04
P920-550-G0028	68564-04
7607-400-G0028	68579-04
7607-450-G0028	68581-04
7607-500-G0028	68582-04
7607-550-G0028	68583-04
7620-610-G0028	68585-04
7620-914-G0028	68587-04
7620-1200-G0028	68590-04
P620+rail-R7006	68594-03
7620-610-G0028	68614-03
7620-914-G0028	68616-03
7620-1200-G0028	68618-03

Drawer parts				
Qty.	Part	A - width*	B - length	C - height
1	Bottom	Inside cabinet width - 58 [2 5/16"]	See chart	
1	Back	Inside cabinet width - 58 [2 5/16"]		149 [5 7/8"]
1	Front	Inside cabinet width - 85 [3 3/8"]		Fixed
1	Rail	Inside cabinet width - 55 [2 3/16"]		Fixed
1	Divider	Inside cabinet width - 55 [2 3/16"]		Fixed

*If drawer member spacers are used, deduct their thickness from the inside cabinet width.

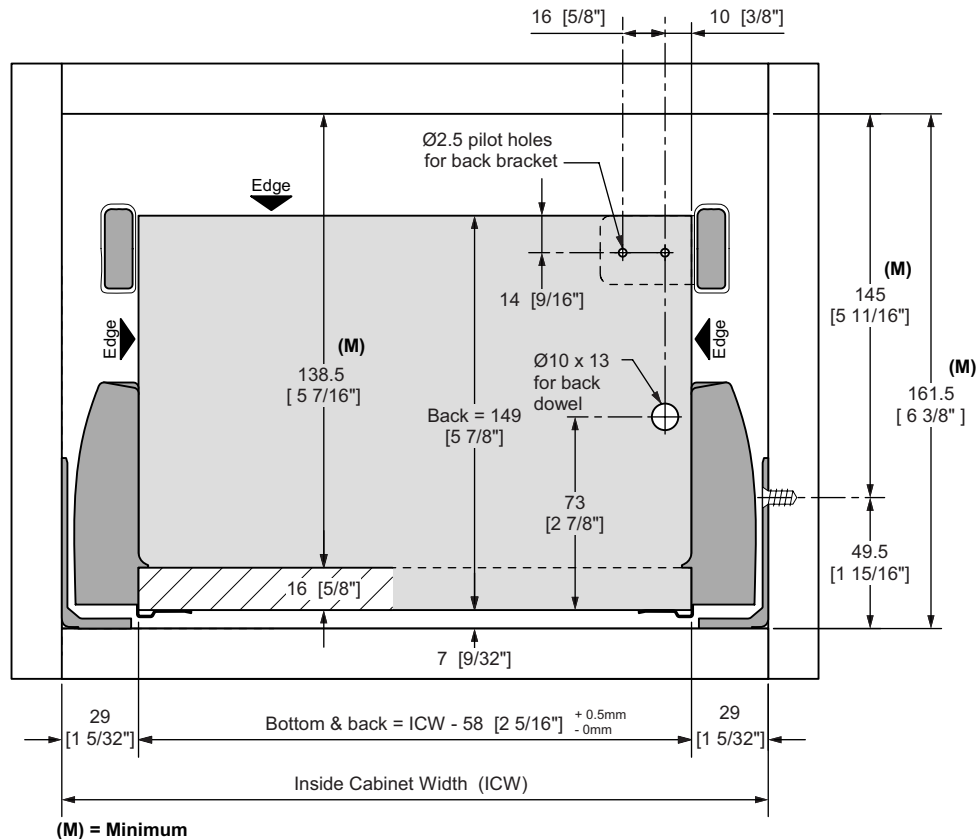
Drawer bottom length B	
Slide length	Bottom length
400 [16"]	381 [15"]
450 [18"]	431 [16 15/16"]
500 [20"]	481 [18 15/16"]
550 [22"]	531 [20 7/8"]



Attach with 13mm [½"] long Euro screws or #7 x 5/8" wood screw.
Use 4 screws per side on 70kg [154 lb.] slides.

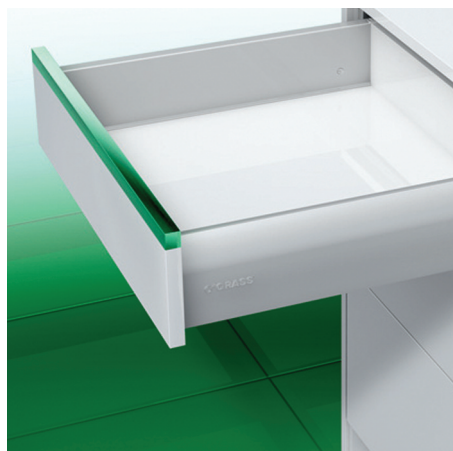
Slide Length	D	E
400 [16"]	261 [10 1/4"]	414 [16 5/16"]
450 [18"]	325 [12 13/16"]	464 [18 1/4"]
500 [20"]	325 [12 13/16"]	514 [20 1/4"]
550 [22"]	325 [12 13/16"]	564 [22 3/16"]

Assembly Details



Nova Pro Deep Drawer

P930 series - 122mm [4 ¾"] side height



The Deep Drawer is 32mm [1 1/4"] taller than the Standard Drawer adding more storage capacity.

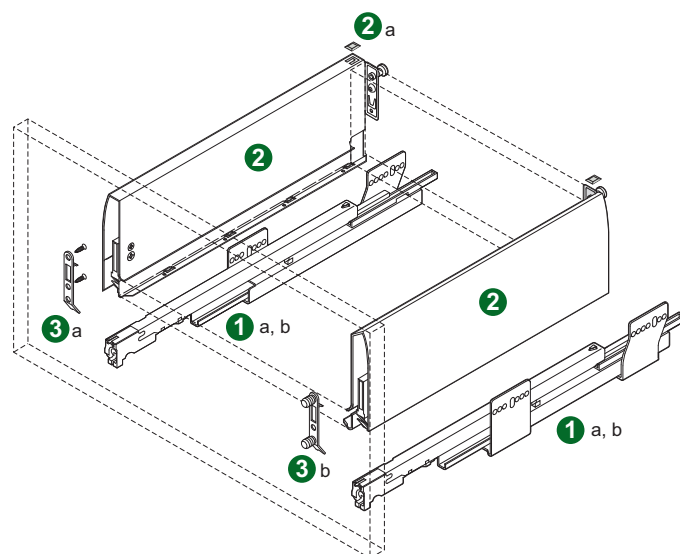
- Full extension for maximum access to drawer contents
- Available load capacities: 40kg [88 lbs.] and 70kg [154 lbs.] dynamic
- Exclusive Airmatic controlled closing
- Tool-free drawer front removal and installation
- Cam height adjustment and tool-free side adjustment of drawer front
- Exclusive cam tilt adjustment for drawer front
- Available in high gloss Champagne or Metallic finish

How to specify hardware:

1. Select cabinet member set - options are length and load capacity
2. Select matching drawer member set - options are Champagne or Metallic finish
3. Select front brackets - options are screw-on or dowelled (for press-in installation)

Components

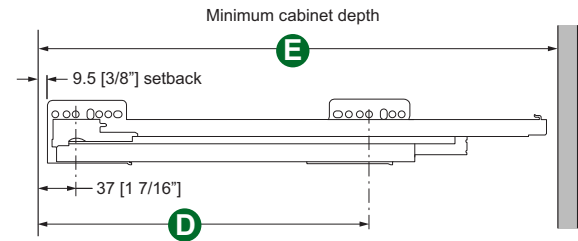
ID	Description	Length*	Reference No.	Item No.	PU
1a	Cabinet member set 40 kg. [88 lb.] dynamic capacity	400 [16"]	P904-400	63666-04	10
		450 [18"]	P904-450	63667-04	10
		500 [20"]	P904-500	63668-04	10
		550 [22"]	P904-550	63669-04	10
1b	Cabinet member set 70 kg. [154 lb.] dynamic capacity	450 [18"]	P907-450	63711-04	10
		500 [20"]	P907-500	63714-04	10
		550 [22"]	P907-550	63717-04	10
3a	Screw-on bracket	2 req'd. per drawer	7600-SCR-PB	21855-87	100
3b	Dowelled bracket		7600-DWL-PB	21854-87	100
			7600-DWL	21854-42	100



ID	Description	Length*	Metallic	PU
2	Drawer member set 122mm [4 ¾"]	400 [16"]	P930-400-R9006	65156-04
		450 [18"]	P930-450-R9006	65159-04
		500 [20"]	P930-500-R9006	65162-04
		550 [22"]	P930-550-R9006	65165-04
2a	U-cover cap (1)	All	7600-CAP-R9006	25821-41

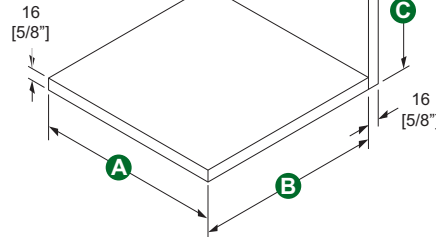
Champagne	PU
P930-400-G0028	68567-04
P930-450-G0028	68570-04
P930-500-G0028	68573-04
P930-550-G0028	68576-04

Drawer parts				
Qty.	Part	A - width	B - length	C - height
1	Bottom	Inside cabinet width - 58 [2 5/16"]	See chart	
1	Back	Inside cabinet width - 58 [2 5/16"]		116 [4 9/16"]



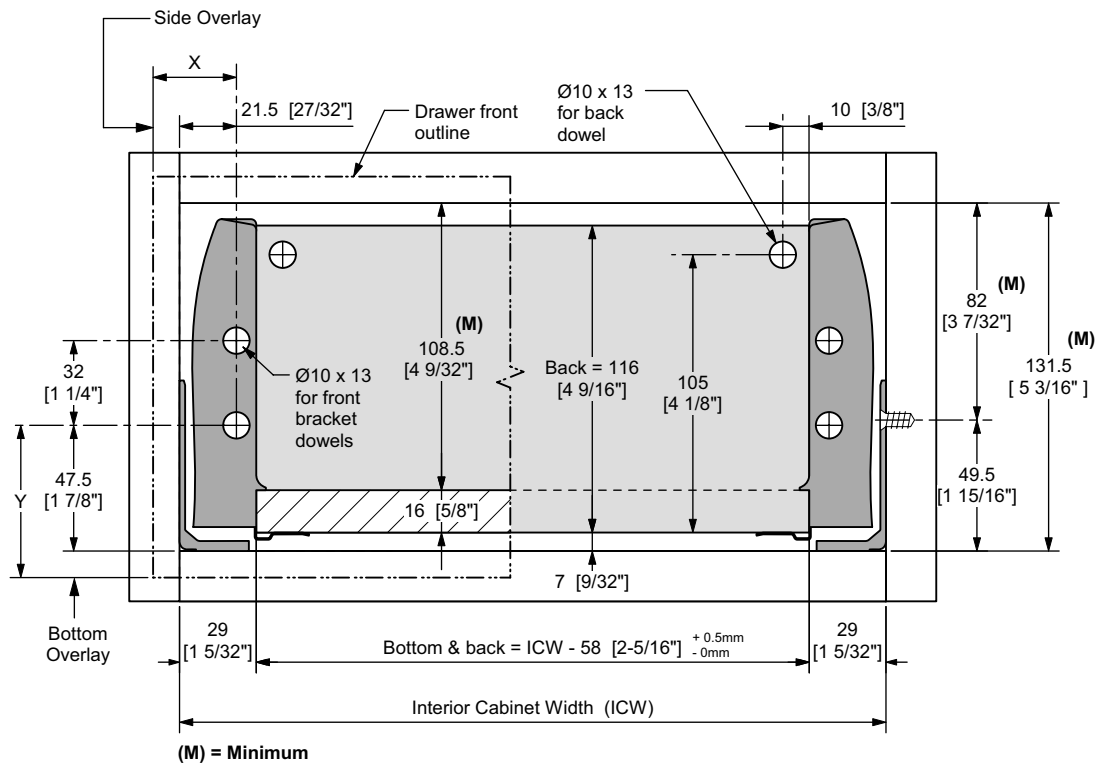
Attach with 13mm [½"] long Euro screws or #7 x ¾" wood screw. Use 4 screws per side on 70kg [154 lb.] slides.

Drawer bottom length B	
Slide length	Bottom length
400 [16"]	381 [15"]
450 [18"]	431 [16 15/16"]
500 [20"]	481 [18 15/16"]
550 [22"]	531 [20 7/8"]



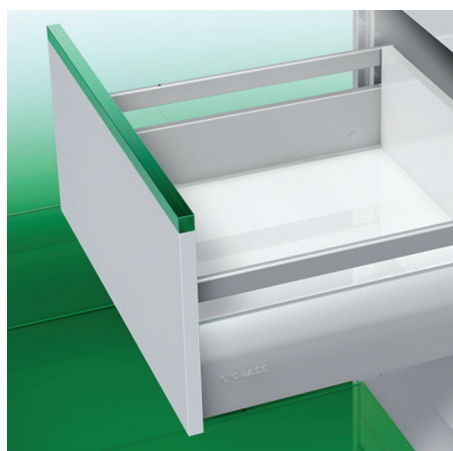
Slide Length	D	E
400 [16"]	261 [10 1/4"]	405 [15 15/16"]
450 [18"]	325 [12 13/16"]	455 [17 15/16"]
500 [20"]	325 [12 13/16"]	505 [19 7/8"]
550 [22"]	325 [12 13/16"]	555 [21 7/8"]

Assembly Details



Nova Pro Deep Drawer with Railings

P930 series - 122mm [4 3/4"] side height



Adding a railing kit to the Deep Drawer provides more storage area and enables organization with Nova Pro divider railing kits.

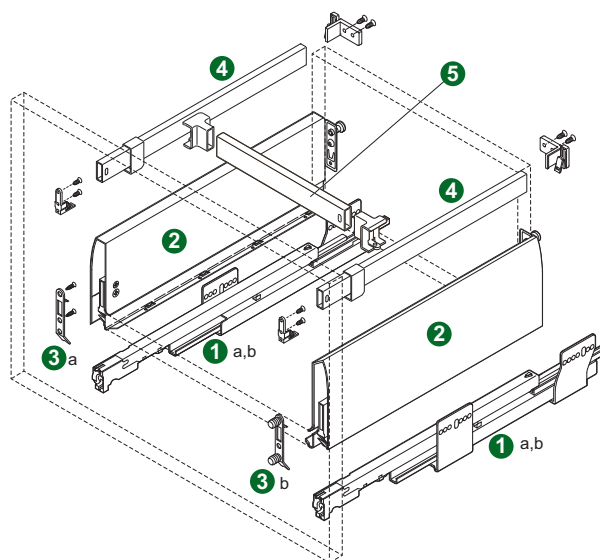
- Full extension for maximum access to drawer contents
- Available load capacities: 40kg [88 lbs.] and 70kg [154 lbs.] dynamic
- Tool-free railing, divider and drawer front removal and installation
- Cam height adjustment and tool-free side adjustment of drawer front
- Exclusive cam tilt adjustment for drawer front
- Railings provide drawer front tilt adjustment as well

How to specify hardware:

1. Select cabinet member set - options are length and load capacity
2. Select matching drawer member set - options are Champagne or Metallic finish
3. Select front brackets - options are screw-on or dowelled (for press-in installation)
4. Select corresponding length railing set
5. Select divider set that is equal to or less than overall cabinet width

Components

ID	Description	Length*	Reference No.	Item No.	PU
1a	Cabinet member set 40 kg. [88 lb.] dynamic capacity	400 [16"]	P904-400	63666-04	10
		450 [18"]	P904-450	63667-04	10
		500 [20"]	P904-500	63668-04	10
		550 [22"]	P904-550	63669-04	10
1b	Cabinet member set 70 kg. [154 lb.] dynamic capacity	450 [18"]	P907-450	63711-04	10
		500 [20"]	P907-500	63714-04	10
		550 [22"]	P907-550	63717-04	10
3a	Screw-on bracket	2 req'd. per drawer	7600-SCR-PB	21855-87	100
3b	Dowelled bracket		7600-DWL-PB	21854-87	100
			7600-DWL	21854-42	100



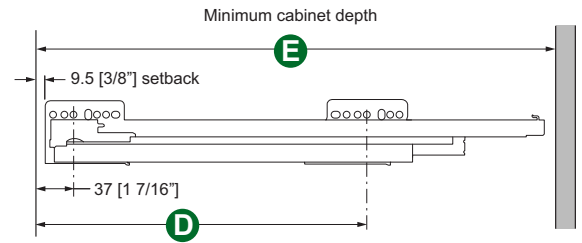
ID	Description	Length*	Metallic	PU
2	Drawer member set 122mm [4 3/4"]	400 [16"]	P930-400-R9006	65156-04
		450 [18"]	P930-450-R9006	65159-04
		500 [20"]	P930-500-R9006	65162-04
		550 [22"]	P930-550-R9006	65165-04
2a	U-cover cap (1)	All	7600-CAP-R9006	25821-41
4	Side railing set with tilt adjustment	400 [16"]	7607-400-R9006	45860-04
		450 [18"]	7607-450-R9006	45861-04
		500 [20"]	7607-500-R9006	45862-04
		550 [22"]	7607-550-R9006	45863-04
5	Divider railing set Select by overall cabinet width	610 [24"]	7602-610-R9006	68814-04
		914 [36"]	7602-914-R9006	69151-04
		1200 [47"]	7602-1200-R9006	51661-04

Champagne	PU
P930-400-G0028	68567-04
P930-450-G0028	68570-04
P930-500-G0028	68573-04
P930-550-G0028	68576-04
7607-400-G0028	68579-04
7607-450-G0028	68581-04
7607-500-G0028	68582-04
7607-550-G0028	68583-04
7602-610-G0028	68585-04
7602-914-G0028	68587-04
7602-1200-G0028	68590-04

*Inch equivalent length is nominal (1) Applicable to metallic drawer members only PB = (20) Brackets per polybag

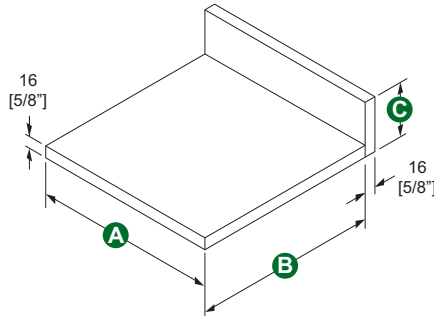
PU = Packing Unit

Drawer parts				
Qty.	Part	A - width	B - length	C - height
1	Bottom	Inside cabinet width - 58 [2 5/16"]	See chart	
1	Back	Inside cabinet width - 58 [2 5/16"]		181 [7 1/8"]



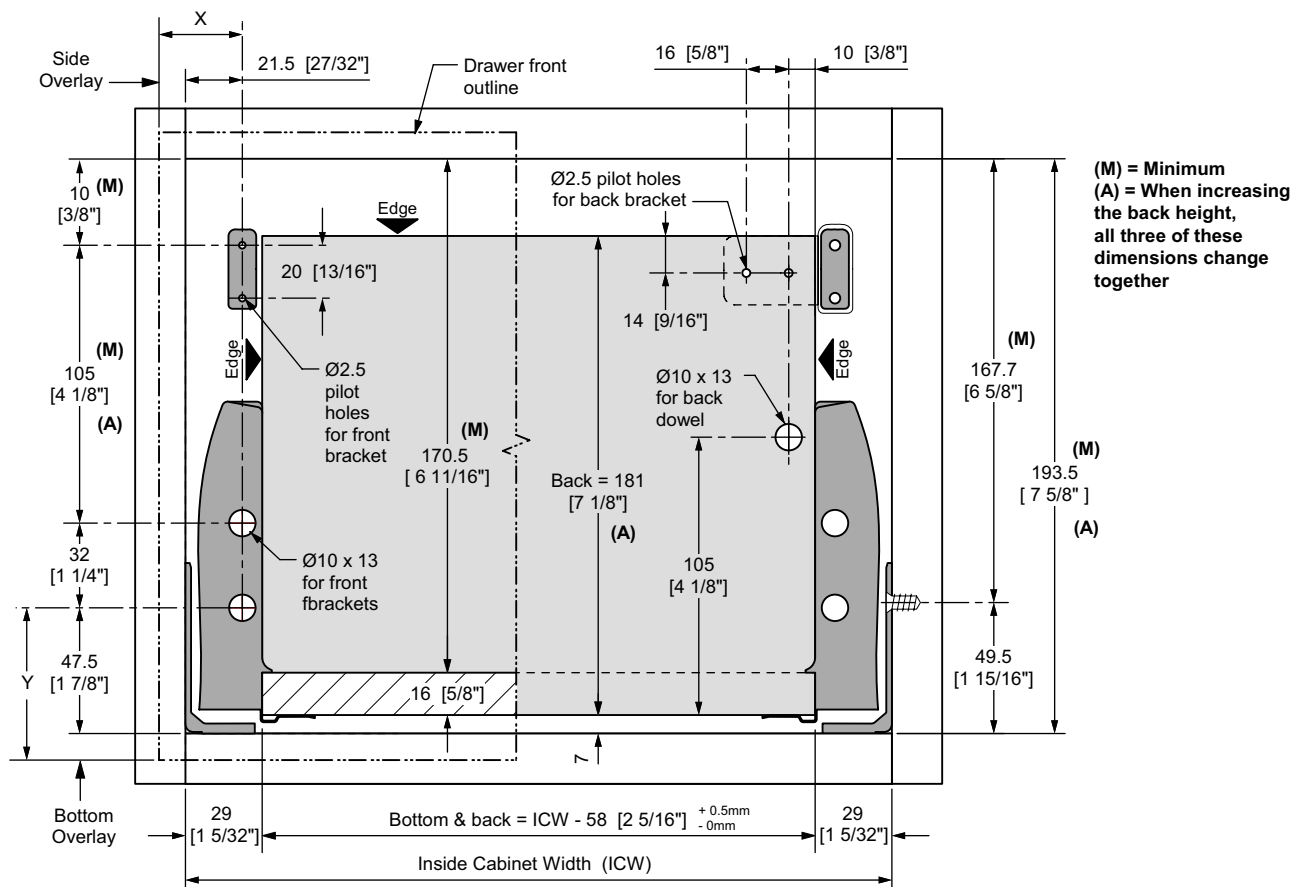
Attach with 13mm [½"] long Euro screws or #7 x ⅝" wood screw. Use 4 screws per side on 70kg [154 lb.] slides.

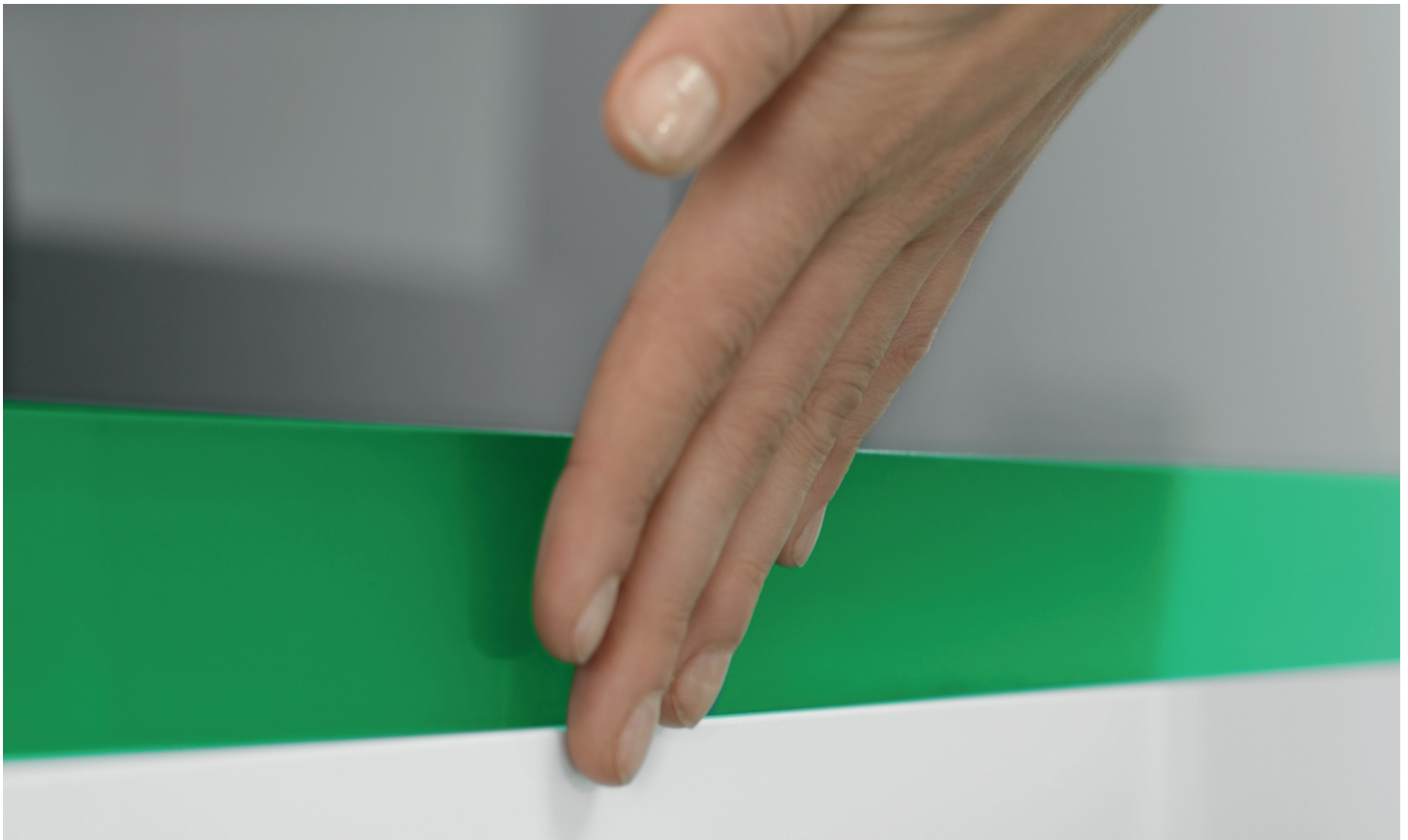
Drawer bottom length B	
Slide length	Bottom length
400 [16"]	381 [15"]
450 [18"]	431 [16 15/16"]
500 [20"]	481 [18 15/16"]
550 [22"]	531 [20 7/8"]



Slide Length	D	E
400 [16"]	261 [10 1/4"]	405 [15 15/16"]
450 [18"]	325 [12 13/16"]	455 [17 15/16"]
500 [20"]	325 [12 13/16"]	505 [19 7/8"]
550 [22"]	325 [12 13/16"]	555 [21 7/8"]

Assembly Details





Three different closing options make Nova Pro the perfect drawer system of choice

Sensotronic - Sensomatic - Tipmatic Plus

Just tap anywhere on the drawer front and the drawer opens automatically.

From electrical drawers to push to open drawers the Nova Pro offers options for handle-free opening.



Comfort with a fascinating twist:
lightly touch the front panel and the
drawers will open as if by magic.
Fully automatic, electrically powered



Modern appealing cabinet design paired with state-of-the-art hardware that offers functionality and convenience is the answer for today's cabinetry. Grass offers three options for handle-free drawers while using the Nova Pro.

Sensotronic is an electro-mechanically con-



trolled motion that works exclusively with the Nova Pro. Drawers and pull outs open automatically in response to a gentle tap on the drawer front, always at the same speed and always to the same degree regardless of the load they are carrying. Sensotronic offers intelligent drawer movement for your fine cabinetry.

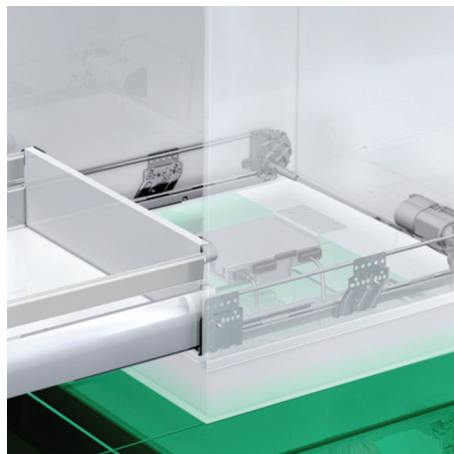
Sensomatic is also an electro-mechanical opening system that can be activated by a light touch anywhere on the surface of the drawer front. It has never been easier to open a drawer and never easier to close a drawer. Sensomatic together with Nova Pro's Soft-close action offers all the advantages of handle-free opening with elegance and functionality. Tipmatic Plus is a mechanical opening for standard Nova drawers. Thanks to the touch activa-



ted mechanism, it is possible to operate large handle-free fronts that will open with a gentle touch. Tipmatic offers optimum design options for stylish cabinetry.

Sensotronic for Nova Pro

The world’s first intelligent drawer system

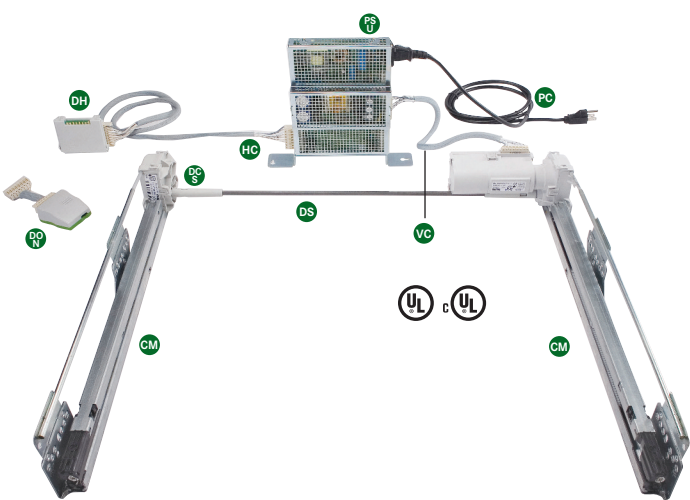


Sensotronic works with the Nova Pro P920 series of drawer sides.

- Electronically controlled slide system
- Opens and closes for the full drawer extension
- Simple plug and play installation
- Ideal for pot/pan drawer, waste Bin and pull out shelving
- For Noa Pro P920 - 90 mm (3 1/2”) high drawer only

Components

ID	Description	Length*	Reference #	Item #	PU
CM	Cabinet member set 40 kg [88 lb.] dynamic capacity	270 [11"]	P904T-270	69700-94	4
		350 [14"]	P904T-350	69706-94	4
	Cabinet member set 70 kg [154 lb.] dynamic capacity	400 [16"]	P907T-400	69709-94	4
		450 [18"]	P907T-450	69712-94	4
		500 [20"]	P907T-500	69718-94	4
		550 [22"]	P907T-550	69721-94	4
DS	Drive Shaft	415 [16"]	P600T-600-DS	70051-04	10
		615 [24"]	P600T-800-DS	70052-04	10
		715 [28"]	P600T-900-DS	70053-04	10
		815 [32"]	P600T-1000-DS	70054-04	10
		1015 [40"]	P600T-1200-DS	70055-04	10
DS	Drive Shaft Connector	N/A	P600T-DSC	68528-39	20
HC	Horizontal Cable	900 [35"]	P600T-900-HC	70061-04	10
		1200 [47"]	P600T-1200-HC	70062-04	10
		1500 [59"]	P600T-1500-HC	70063-04	10
		3000 [118"]	P600T-3000-HC	70065-04	10
VC	Vertical Cable	200 [8"]	P600T-200-VC	70071-04	10
		250 [9"]	P600T-250-VC	70072-04	10
		350 [13"]	P600T-350-VC	70073-04	10
		450 [17"]	P600T-450-VC	70074-04	10
		650 [25"]	P600T-650-VC	70076-04	10
PSU	Power Supply Unit	N/A	P600T-PSU	68518-04	10
PC	Power Cord**	2000 [78"]	P600T-PC	69760-04	10
DH	Distributor Hub	N/A	P600T-DH	68519-04	10
DON	Dongle	N/A	P600T-DON	70000-04	10



The components shown are required to make the drawers move electronically. For a complete drawer, the following additional components are required:

- Nova Pro drawer member set
- Front brackets
- Accessories as desired

The operating manual is included in each purchased Sensotronic set. Installation is quick and easy – plug & play. Not suitable for Nova Pro P930 - 122 mm (4 3/4”) drawer slide.

*Inch equivalent is nominal. Length = Nominal Length (NL). **Works with US outlets only.

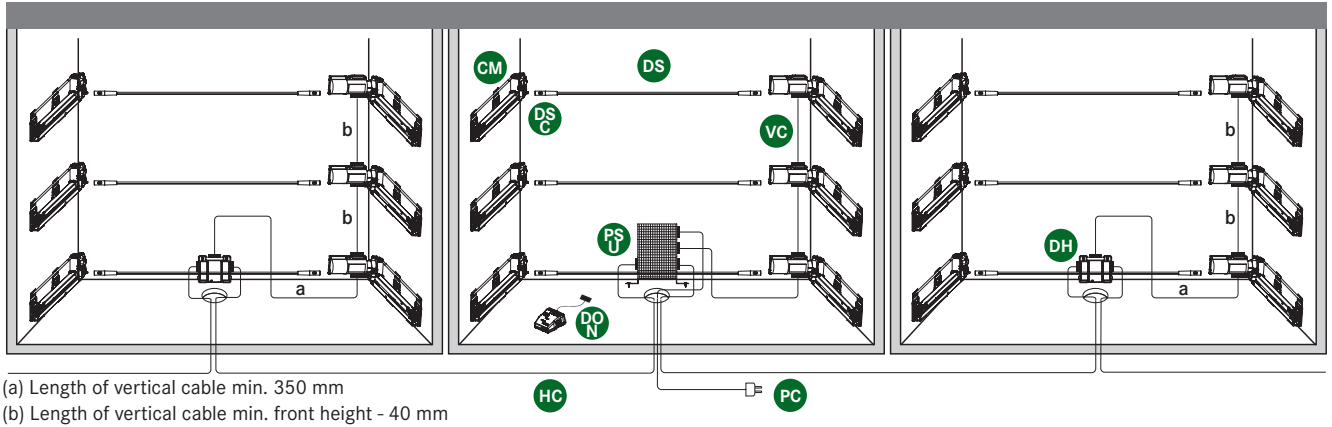
PU = Packing Unit

Sensotronic Example

Components for an example installation

The example below illustrates three base cabinets with three drawers each for a total of nine drawers. The list below shows the components required to make the drawers move. Nova Pro drawer member sets, front brackets and other accessories would be added to complete the installation.

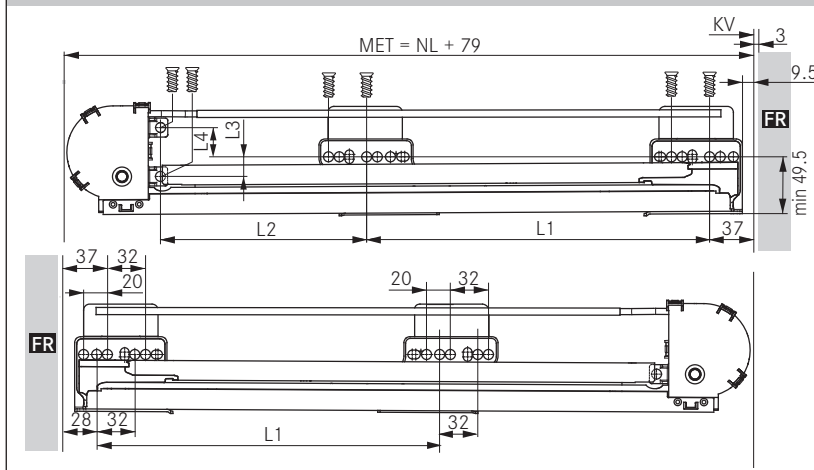
Qty.	Component	1	PC - Power Cord
9	CM - Cabinet Member sets Available for assorted drawer lengths	9	VC - Vertical Cables Available in assorted lengths
9	DS - Drive Shafts Available in assorted lengths	2	DH - Distributor Hub
18	DSC - Drive Shaft Connectors	2	HC - Horizontal Cables Available in assorted lengths
1	PSU - Power Supply Unit	1	DON - Programming Dongle Required by the cabinet installer



Planning and Pre-emptive Measures

Cabinet Layout	Cabinet Layout
<ul style="list-style-type: none"> Provide switchable outlets in order to turn off PSU when cleaning or during vacation. Locate PSU near outlet. Allow 79 mm [3 1/8"] clearance in the back. Cabinet depth = Nominal length (NL) + 79 mm. Calculation for drive shaft: Length = ICW-150mm [5 29/32"] ICW - Inside Cabinet Width Installation height of PSU is 230 mm [9"]. Install with cordless screwdriver. Activation zone is entire drawer front with activation gap of 3 mm [1/8"], adjust up to 6 mm [1/4"]. 5 m [16'] maximum distance from PSU to last electrical recipient (cabinet member). 	<ul style="list-style-type: none"> PSU can be used worldwide. Power cord is country specific. (UL and cUL listed) Connect up to 22 drawers on 1 PSU. If kitchen layout includes an island use an additional PSU. PSU must not be located in a sink cabinet and must be installed in upright position. In the event of a power outage, operate drawers conventionally. All stored system data is retained during a power outage. No need to reprogram with the dongle.

Installation dimensions - cabinet slide



NOTES

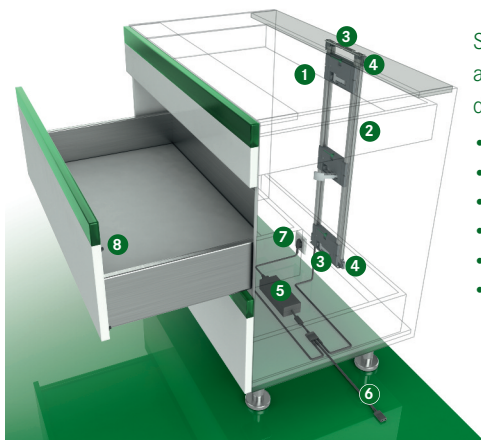
- 1 power supply unit - max. 22 drawers
- Cabinet rail max. 5 m (16 foot) distance from power supply unit
- Front gap = 3 mm (1/8")
- Attach with Euro screws
- The system **must be disconnected** for installation and dismantling

① Not suitable for Nova Pro Deluxe drawer side 122 mm

NL	400	450	500
L1	224	288	288
L2	137	123	173
L3	16.5	16.5	16.5
L4	26.5	26.5	26.5

Sensomatic for Nova Pro

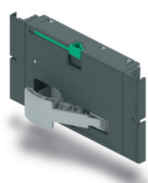
Standard cabinet with horizontal wooden stretcher



Sensomatic is an electro-mechanical opening system that can be activated by a light touch. Works with Nova Pro P920 and P930 drawer sides.

- Sensotronic works with any Nova Pro drawer design
- Activated by a light touch anywhere on the drawer front
- One drive unit for cabinets widths up to 47" (1200mm)
- Soft-closing action pulls the drawer closed
- Ideal for accessories such as wire baskets, wash bins or roll-out trays
- Full extension for maximum access to drawer contents

1 Opening unit



for Nova Pro	F121100268607
PU 10 = 10 pieces, individually packaged	PU 10

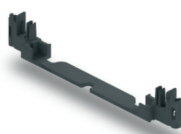
2 Frame sides, including frame side cable



Length	Item No.
750 mm	F121100285207
1170 mm	F121100286207
	PU 10

PU 10 = 10 pairs

3 Frame connector



	Item No.
Frame connector	F121100282211
	PU 20

PU 20 = 20 pieces

4 Fixing bracket



	Item No.
Fixing bracket	F121100270211
	PU 20

PU 20 = 20 pieces

5 Power supply unit



	Item No.
Power supply unit	F121100269607
	PU 10

PU 10 = 10 pieces, individually packaged

6 Connection cable with 2-way-adapter



Length	Item No.
1000 mm	F121100289207
1600 mm	F121100290207
2000 mm	F121100291207
	PU 10

PU 10 = 10 pieces

7 Power cord, 1.8 m [6']



Type of plug	Item No.
Power cord (USA, CA)	69760-04
without plug	69767-04
	PU 10

PU 10 = 10 pieces

8 Spring-loaded front bumper



Ø 5 mm	Item No.	Ø 8 mm	Item No.
Front gap 2.2 mm	F121100294223	Front gap 2.2 mm	F121100297223
Front gap 3 mm	F121100295223	Front gap 3 mm	F121100298223
Front gap 4 mm	F121100296223	Front gap 4 mm	F121100299223
	PU 100		PU 100

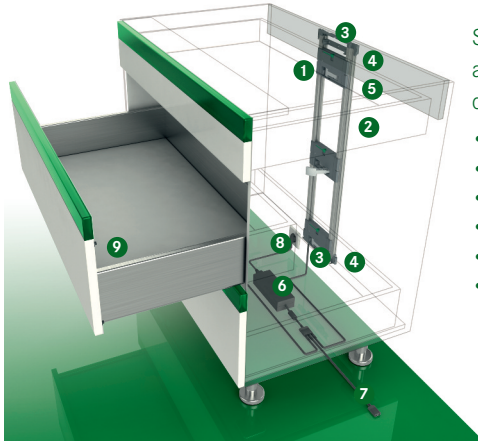
PU 100 = 100 pieces

PU 100 = 100 pieces

PU = Packing Unit

Sensomatic for Nova Pro

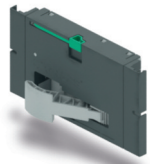
Standard cabinet with vertical wooden stretcher



Sensomatic is an electro-mechanical opening system that can be activated by a light touch. Works with Nova Pro P920 and P930 drawer sides.

- Sensotronic works with any Nova Pro drawer design
- Activated by a light touch anywhere on the drawer front
- One drive unit for cabinets widths up to 47" (1200mm)
- Full-extension for maximum access to drawer contents
- Soft-closing action pulls the drawer closed
- Ideal for accessories such as wire baskets, wash bins or roll-out trays

1 Opening unit



	Item No.
for Nova Pro	F121100268607
	PU 10
PU 10 = 10 pieces, individually packaged	

2 Frame sides, including frame side cable



Length	Item No.
750 mm	F121100285207
1170 mm	F121100286207
	PU 10
PU 10 = 10 pairs	

3 Frame connector



	Item No.
Frame connector	F121100282211
	PU 20
PU 20 = 20 pieces	

4 Fixing bracket



	Item No.
Fixing bracket	F121100270211
	PU 20
PU 20 = 20 pieces	

5 Rear-mount fixing brackets



Frame set	Item No.
flush mount	F121100275207
	PU 10
back mount	F121100276207
	PU 10
PU 10 = 10 pieces	

6 Power supply unit



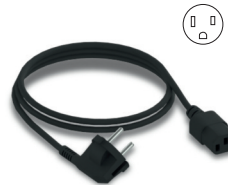
	Item No.
Power supply unit	F121100269607
	PU 10
PU 10 = 10 pieces, individually packaged	

7 Connection cable with 2-way-adapter



Length	Item No.
1000 mm	F121100289207
1600 mm	F121100290207
2000 mm	F121100291207
	PU 10
PU 10 = 10 pieces	

8 Power cord, 1.8 m [6']



	Item No.
Power cord (USA, CA)	69760-04
without plug	69767-04
	PU 10
PU 10 = 10 pieces	

9 Spring-loaded front bumper



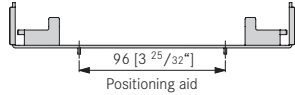
Ø 5 mm	Item No.
Front gap 2.2 mm	F121100294223
Front gap 3 mm	F121100295223
Front gap 4 mm	F121100296223
	PU 100
PU 100 = 100 pieces	

Ø 8 mm	Item No.
Front gap 2.2 mm	F121100297223
Front gap 3 mm	F121100298223
Front gap 4 mm	F121100299223
	PU 100
PU 100 = 100 pieces	

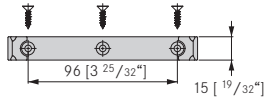
PU = Packing Unit

Mounting dimensions

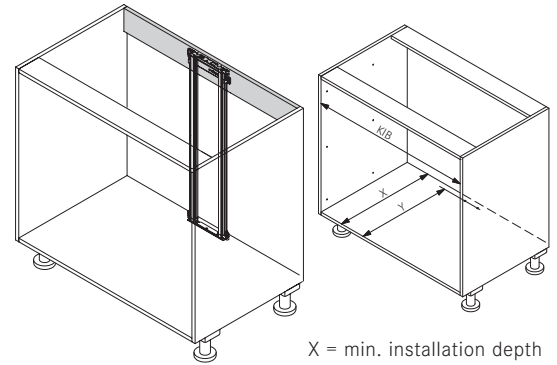
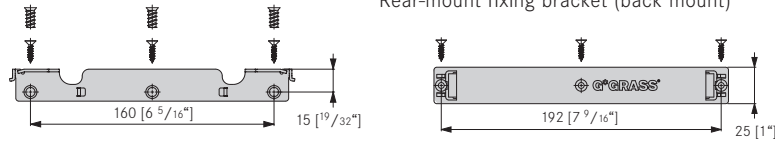
Fixing bracket positioned at bottom



Rear-mount fixing bracket (flush mount)



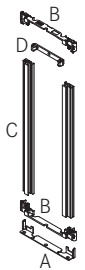
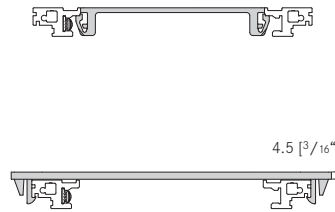
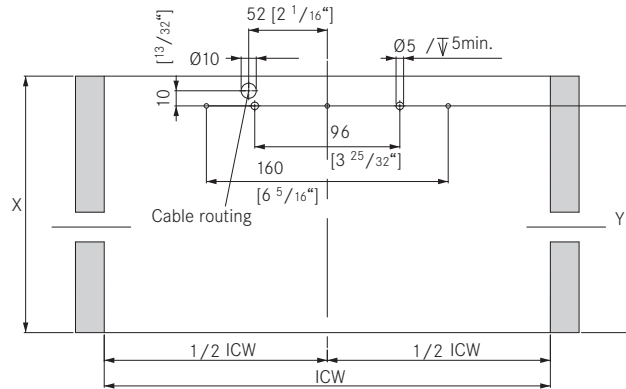
Rear-mount fixing bracket (back mount)



X = min. installation depth

Y = depth of hole pattern

ICW = inside cabinet width



A = Fixing bracket used at bottom

B = Frame connector

C = Frame sides

D = Rear mount fixing bracket
flush mount or back mount

Mounting dimensions Nova Pro

	X	Y
Steel back panel	NL + 18 [$\frac{23}{32}$ "]	NL + 3 [$\frac{1}{8}$ "]
Wood back panel	NL + 20 (+1) [$\frac{25}{32}$ "] (+ $\frac{1}{32}$ "]	NL + 5 (+1) [$\frac{3}{16}$ "] (+ $\frac{1}{32}$ "]

NL = nominal length of cabinet slide

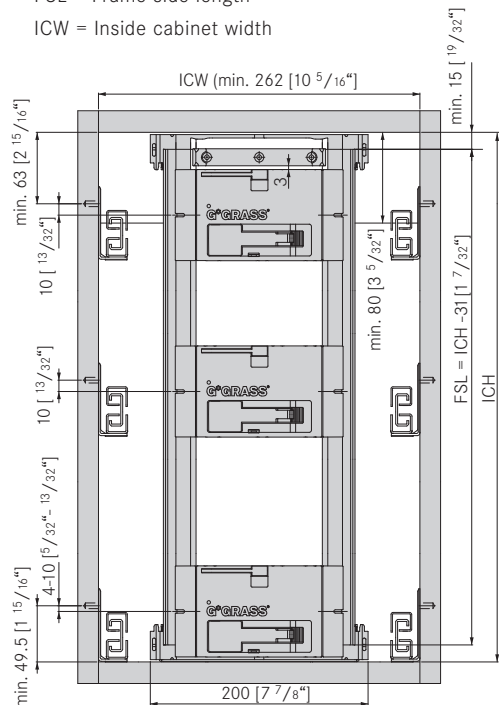
Position of opening unit for Nova Pro

ICH = Inside cabinet height

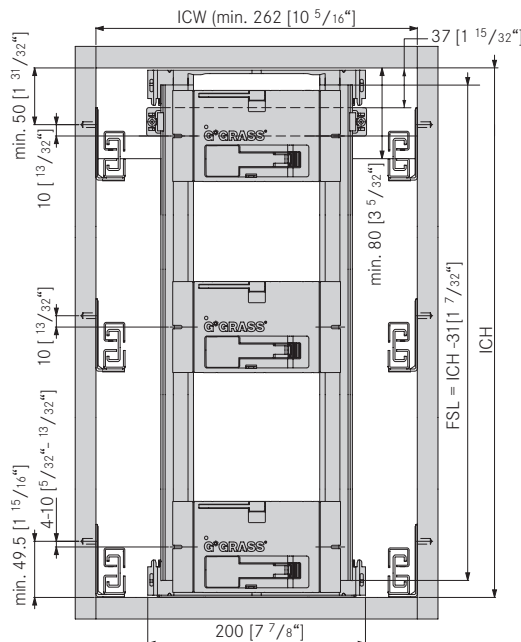
FSL = Frame side length

ICW = Inside cabinet width

inside mounted



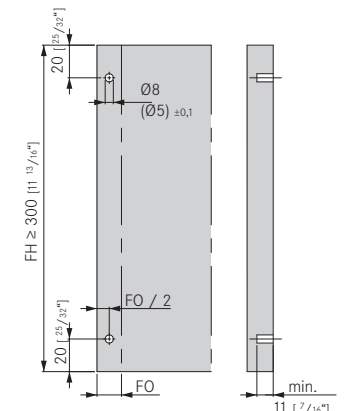
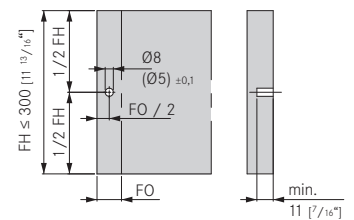
back mounted



Position of front bumper

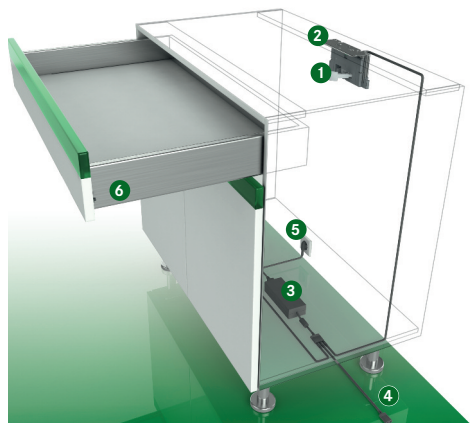
FH = front height

FO = front overlay



Sensomatic for Nova Pro

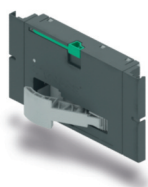
Single drawer with top mounting



Sensomatic is an electro-mechanical opening system that can be activated by a light touch. Works with Nova Pro P920 and P930 drawer sides.

- Sensotronic works with any Nova Pro drawer design
- Activated by a light touch anywhere on the drawer front
- One drive unit for cabinets widths up to 47" (1200mm)
- Full-extension for maximum access to drawer contents
- Soft-closing action pulls the drawer closed
- Ideal for accessories such as wire baskets, wash bins or roll-out trays

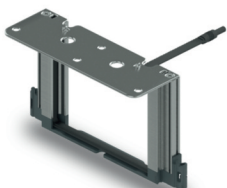
1 Opening unit



	Item No.
for Nova Pro	F121100268607
	PU 10

PU 10 = 10 pieces, individually packaged

2 Frame for top assembly



	Item No.
Height 120 mm [4 23/32"]	F121100272207
Height 170 mm [6 11/16"]	F121100273207
	PU 10

PU 10 = 10 pieces

3 Power supply unit



	Item No.
Power supply unit	F121100269607
	PU 10

PU 10 = 10 pieces, individually packaged

4 Connection cable with 2-way-adapter



Length	Item No.
600 mm	F121100288207
1000 mm	F121100289207
1600 mm	F121100290207
2000 mm	F121100291207
	PU 10

PU 10 = 10 pieces

5 Power cord, 1.8 m [6']



	Item No.
Power cord (USA, CA)	69760-04
without plug	69767-04
	PU 10

PU 10 = 10 pieces

6 Spring-loaded front bumper



Ø 5 mm	Item No.
Front gap 2.2 mm	F121100294223
Front gap 3 mm	F121100295223
Front gap 4 mm	F121100296223
	PU 100

PU 100 = 100 pieces

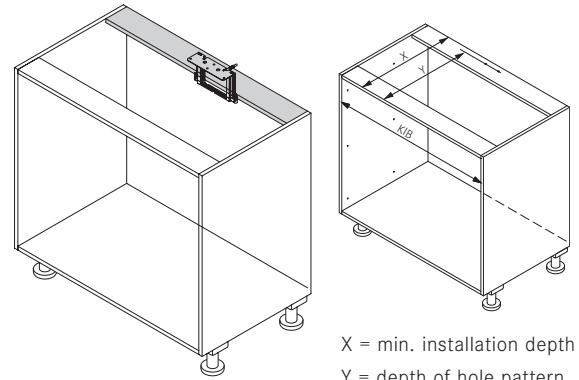
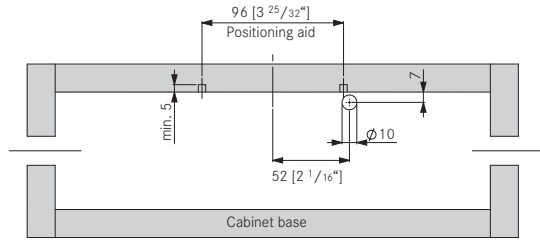
Ø 8 mm	Item No.
Front gap 2.2 mm	F121100297223
Front gap 3 mm	F121100298223
Front gap 4 mm	F121100299223
	PU 100

PU 100 = 100 pieces

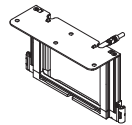
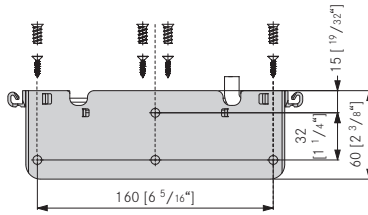
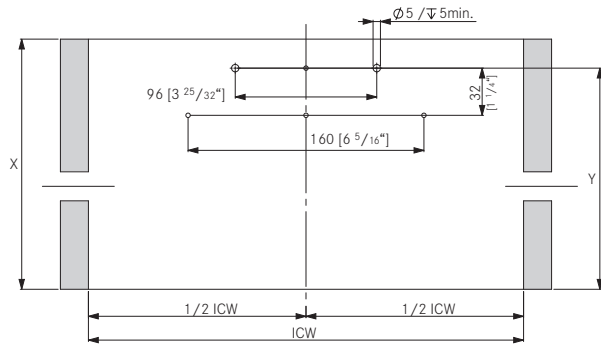
PU = Packing Unit

Mounting dimensions

Back wall cabling



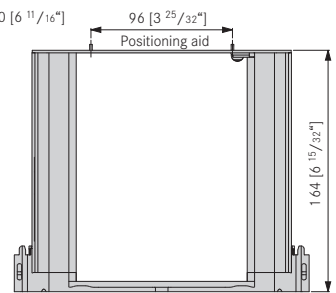
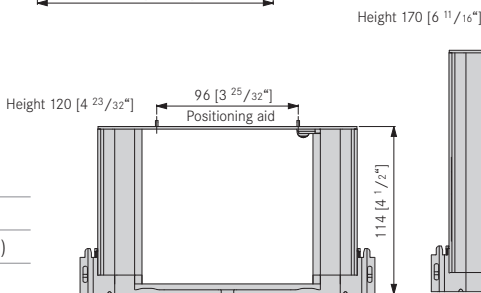
X = min. installation depth
Y = depth of hole pattern
ICW = inside cabinet width



Frame for top mounting

Mounting dimensions for Nova Pro	X	Y
Steel back panel	NL + 18 [29/32"]	NL + 3 [1/8"]
Wood back panel	NL + 20 [25/32"](+1)	NL + 5 [3/16"](+1)

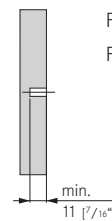
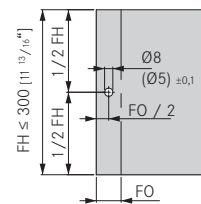
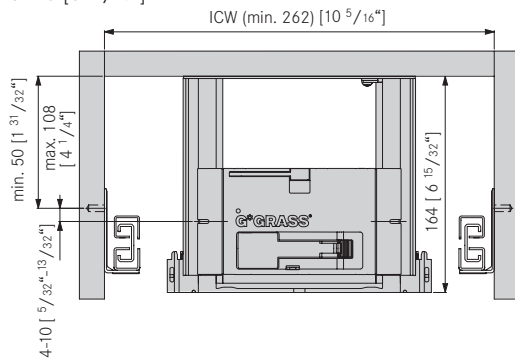
NL = nominal length of cabinet slide



Position of opening unit for Nova Pro

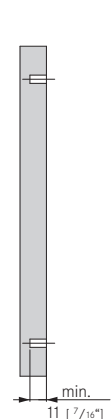
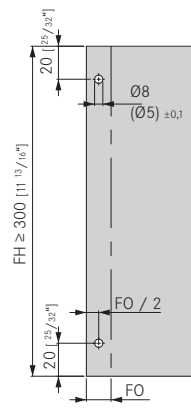
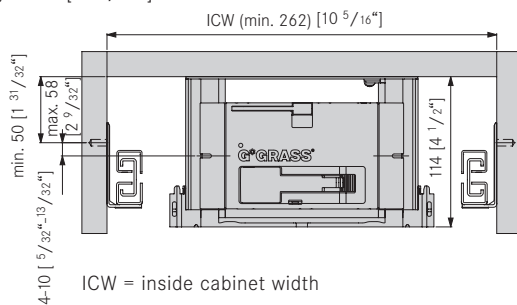
Position of front bumper

Height 170 [6 11/16"]



FH = front height
FO = front overlay

Height 120 [4 23/32"]

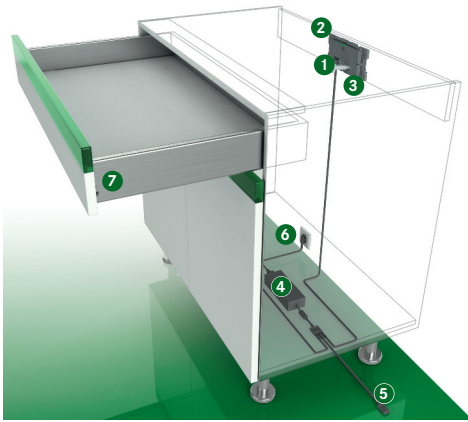


ICW = inside cabinet width

When mounting the heavy-duty slide (154 lbs.), it is necessary to insert 4 front bumpers into the drawer front. Do not drive in or glue front bumpers.

Sensomatic for Nova Pro

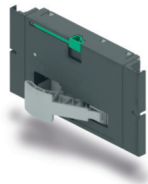
Single drawer with back panel mounting



Sensomatic is an electro-mechanical opening system that can be activated by a light touch. Works with Nova Pro P920 and P930 drawer sides.

- Sensotronic works with any Nova Pro drawer design
- Activated by a light touch anywhere on the drawer front
- One drive unit for cabinets widths up to 47" (1200mm)
- Full-extension for maximum access to drawer contents
- Soft-closing action pulls the drawer closed
- Ideal for accessories such as wire baskets, wash bins or roll-out trays

1 Opening unit



	Item No.
for Nova Pro	F121100268607
	PU 10

PU 10 = 10 pieces, individually packaged

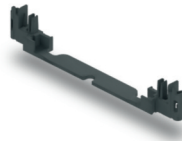
2 Frame sides, including frame side cable



Frame side, pair	Item No.
for 1 Opening unit including hole drilling	F121100283207
	PU 10

PU 10 = 10 pairs

3 Frame connector



	Item No.
Frame connector	F121100282211
	PU 20

PU 20 = 20 pieces

4 Power supply unit



	Item No.
Power supply unit	F121100269607
	PU 10

PU 10 = 10 pieces, individually packaged

5 Connection cable with 2-way-adapter



Length	Item No.
600 mm	F121100288207
1000 mm	F121100289207
1600 mm	F121100290207
2000 mm	F121100291207
	PU 10

PU 10 = 10 pieces

6 Power cord, 1.8 m [6']



	Item No.
Power cord (USA, CA)	69760-04
without plug	69767-04
	PU 10

PU 10 = 10 pieces

7 Spring-loaded front bumper

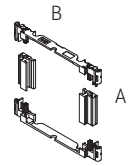
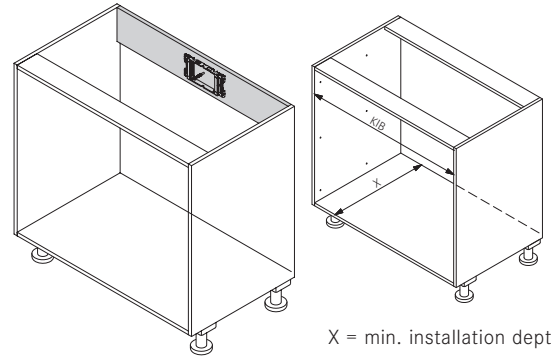
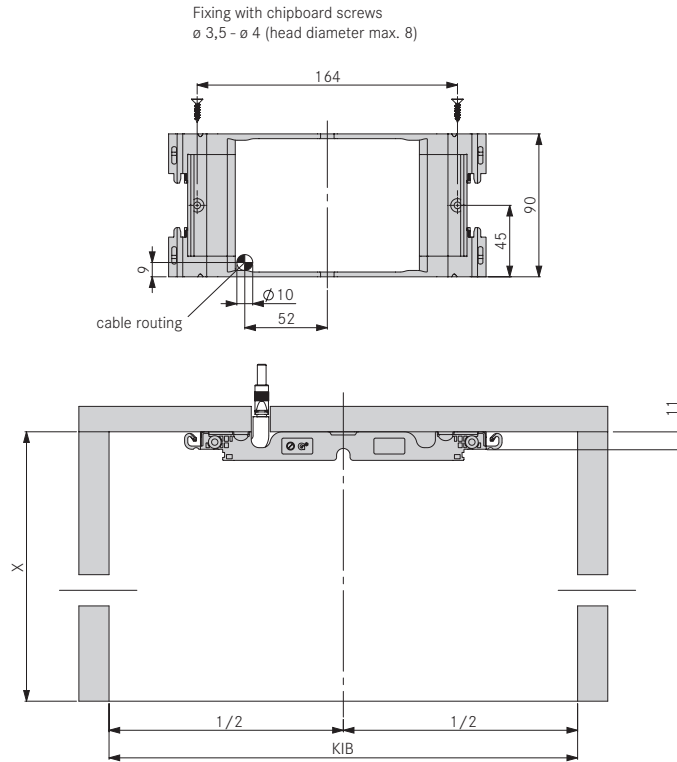


Ø 5 mm	Item No.
Front gap 2.2 mm	F121100294223
Front gap 3 mm	F121100295223
Front gap 4 mm	F121100296223
Ø 8 mm	Item No.
Front gap 2.2 mm	F121100297223
Front gap 3 mm	F121100298223
Front gap 4 mm	F121100299223
	PU 100

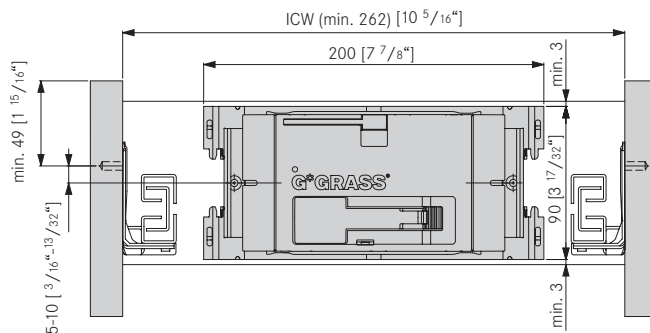
PU 100 = 100 pieces

PU = Packing Unit

Mounting dimensions

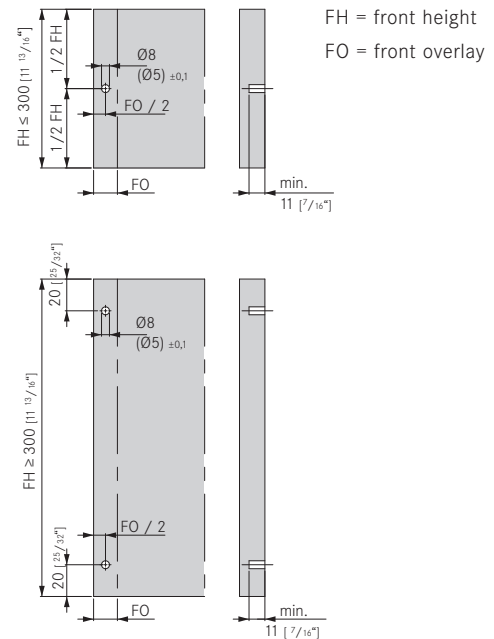


Position of opening unit for Nova Pro



ICW = inside cabinet width

Position of front bumpers

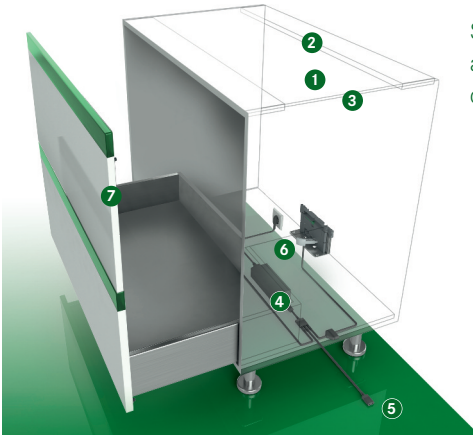


When mounting the heavy-duty slide (154 lbs.), it is necessary to insert 4 front bumpers into the drawer front.

Do not drive in or glue front bumpers.

Sensomatic for Nova Pro

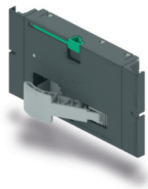
Waste bin cabinet with bottom panel frame mounting



Sensomatic is an electro-mechanical opening system that can be activated by a light touch. Works with Nova Pro P920 and P930 drawer sides.

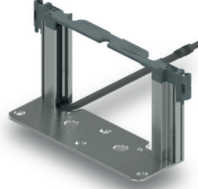
- Sensotronic works with any Nova Pro drawer design
- Activated by a light touch anywhere on the drawer front
- One drive unit for cabinets widths up to 47" (1200mm)
- Full-extension for maximum access to drawer contents
- Soft-closing action pulls the drawer closed
- Ideal for accessories such as wire baskets, wash bins or roll-out trays

1 Opening unit



Item No.
for Nova Pro F121100268607
PU 10
PU 10 = 10 pieces, individually packaged

2 Base frame



Item No.
F121100271207
PU 10
PU 10 = 10 pieces

3 Power supply unit



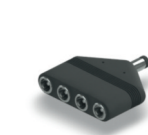
Item No.
Power supply unit F121100269607
PU 10
PU 10 = 10 pieces, individually packaged

4 Connection cable with 2-way-adapter



Length	Item No.
1000 mm	F121100289207
1600 mm	F121100290207
2000 mm	F121100291207
PU 10	
PU 10 = 10 pieces	

5 4-way-adapter



Item No.
4-way-adapter F121100293207
PU 10
PU 10 = 10 pieces

6 Power cord, 1.8 m [6']



Item No.
Power cord (USA, CA) 69760-04
without plug 69767-04
PU 10
PU 10 = 10 pieces

6 Spring-loaded front bumper



Ø 5 mm	Item No.
Front gap 2.2 mm	F121100294223
Front gap 3 mm	F121100295223
Front gap 4 mm	F121100296223
PU 100	
PU 100 = 100 pieces	

Ø 8 mm	Item No.
Front gap 2.2 mm	F121100297223
Front gap 3 mm	F121100298223
Front gap 4 mm	F121100299223
PU 100	
PU 100 = 100 pieces	

Sensomatic Kit

Set includes:

Opening unit: 1
Base frame: 1
Power supply unit : 1

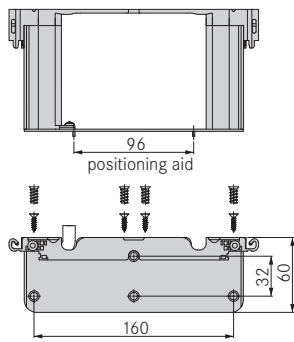


Power cord: 1
Front bumpers (F121100296223): 4

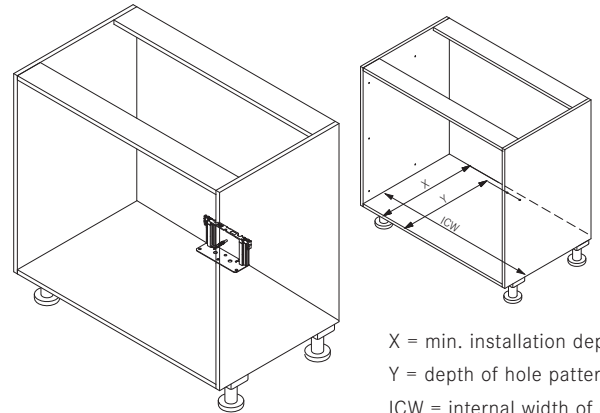
Item No.
For Nova Pro F121100697201
PU 1
PU 1 = 1 set

PU = Packing Unit

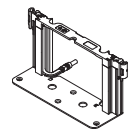
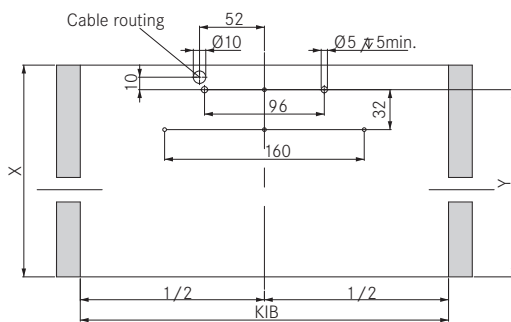
Mounting dimensions



Base mounting



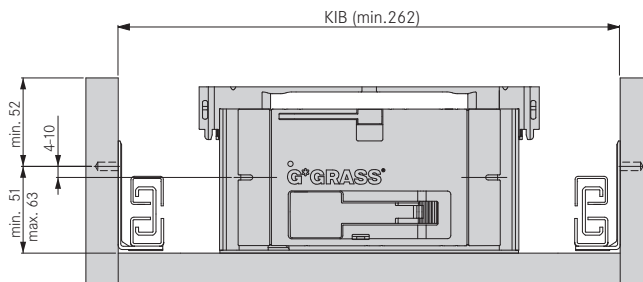
X = min. installation depth
Y = depth of hole pattern
ICW = internal width of cabinet



Base frame

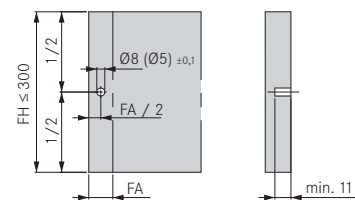
Mounting dimensions Nova Pro	X	Y
Steel back panel	NL + 18 [$\frac{29}{32}$ "]	NL + 3 [$\frac{1}{4}$ "]
Wood back panel	NL + 20 (+1) [$\frac{25}{32}$ "(+ $\frac{1}{32}$ ")]	NL + 5 (+1) [$\frac{3}{16}$ "(+ $\frac{1}{32}$ ")]

Position of opening unit for Nova Pro

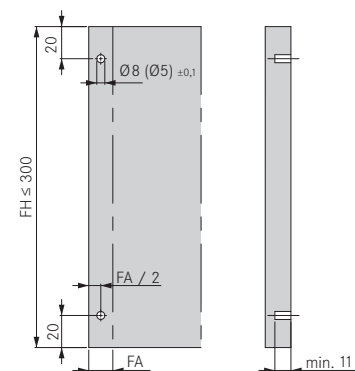


ICW = inside cabinet width

Position of front bumpers



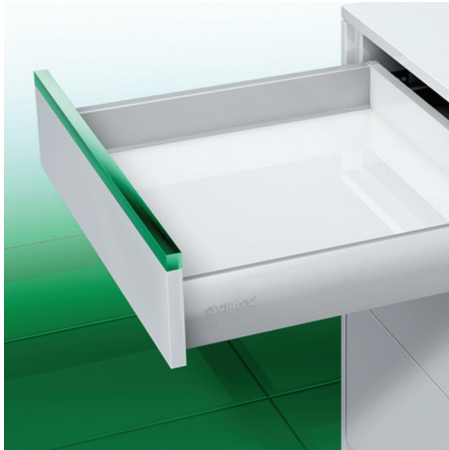
FH = front height
FO = front overlay



When mounting the heavy-duty slide (154 lbs.), it is necessary to insert 4 front bumpers into the drawer front. Do not drive in or glue front bumpers.

Tipmatic Plus for Nova Pro

Open drawers with a slight touch - For handle-free cabinets



Tipmatic Plus is based on the Nova Pro Drawer System.

- Tipmatic works with any Nova Pro drawer design
- Activation zone is entire drawer front - push-to-open
- Excellent use for handle-free drawers in any cabinet design
- Full extension for maximum access to drawer contents
- Cam height adjustment and tool-free side adjustment and removal of drawer front
- Disengage locking unit when transporting cabinets (set front gap to <3mm)

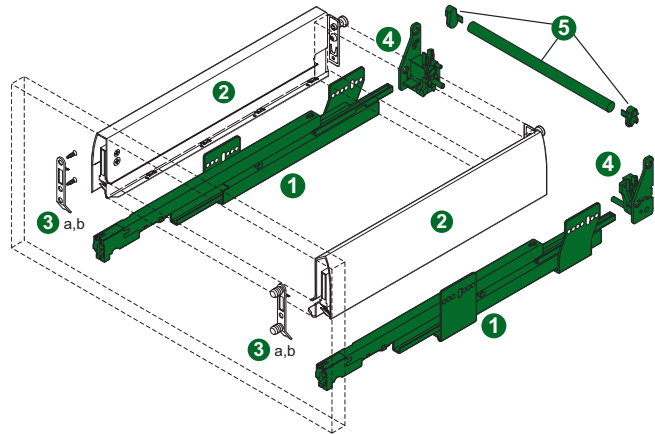
How to specify hardware:

1. Select Tipmatic Plus cabinet member set - option is length
2. Select matching drawer member set - options are Champagne or Metallic finish
3. Select front brackets - options are screw-on or dowelled (for press-in installation)
4. Select locking unit set
5. Select synchronization unit set (to be cut to size)

Components

Tipmatic Plus Components:

ID	Description	Length*	Reference No.	Item No.	PU
1a	Tipmatic Plus Cabinet member set 40 kg. [88 lb.] dynamic capacity	270 [11"]	P904S-270	68290-04	10
		350 [14"]	P904S-350	68292-04	10
		400 [16"]	P904S-400	68293-04	10
		450 [18"]	P904S-450	68294-04	10
		500 [20"]	P904S-500	68295-04	10
		550 [22"]	P904S-550	68296-04	10
4	Locking unit set	-	-	68270-04	10
5	Synchronization unit set	1200 [47 1/2"]	-	68257-04	10



*Example shown is Tipmatic Plus for Standard Drawers.

Tipmatic Plus works with any drawer configuration shown on the previous pages.

Remaining Components for Standard Drawer (Example*):

ID	Description	Length*	Metallic		PU
2	Drawer member set 90mm [3 1/2"]	270 [11"]	P920-270-R9006	65000-04	10
		350 [14"]	P920-350-R9006	65006-04	10
		400 [16"]	P920-400-R9006	65009-04	10
		450 [18"]	P920-450-R9006	65012-04	10
		500 [20"]	P920-500-R9006	65015-04	10
		550 [22"]	P920-550-R9006	65018-04	10
	U-cover cap (1)	All	7600-CAP-R9006	25821-41	50
3a	Screw-on bracket	2 req'd. per drawer	7600-SCR-PB	21855-87	100
3b	Dowelled bracket		7600-DWL-PB	21854-87	100
			7600-DWL	21854-42	100

Champagne		PU
P920-270-G0028	68549-04	10
P920-350-G0028	68552-04	10
P920-400-G0028	68555-04	10
P920-450-G0028	68558-04	10
P920-500-G0028	68561-04	10
P920-550-G0028	68564-04	10

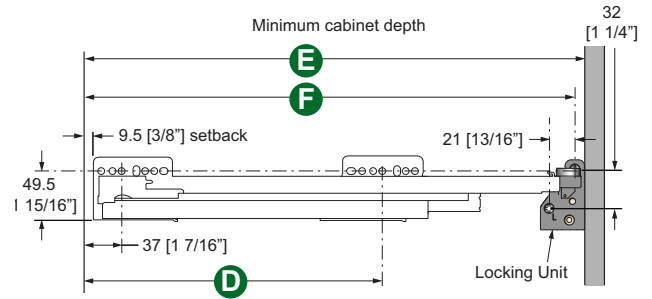
*Inch equivalent length is nominal (1) Applicable to metallic drawer members only PB = (20) Brackets per polybag

PU = Packing Unit

Technical Specifications

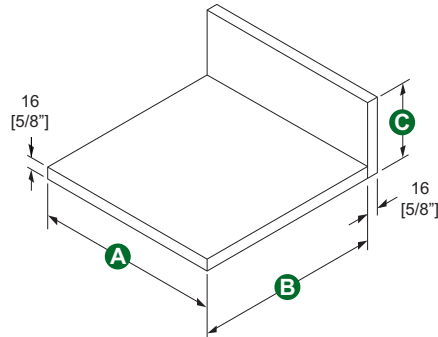
Drawer parts				
Qty.	Part	A - width	B - length	C* - height
1	Bottom	Inside cabinet width - 58 [2 5/16"]	See chart	
1	Back	Inside cabinet width - 58 [2 5/16"]		84 [3 5/16"]

*Depending on which drawer configuration you choose "C" changes. Refer to Technical Specifications on previous pages.



Attach with 13mm [½"] long Euro screws or #7 x ⅝" wood screw.

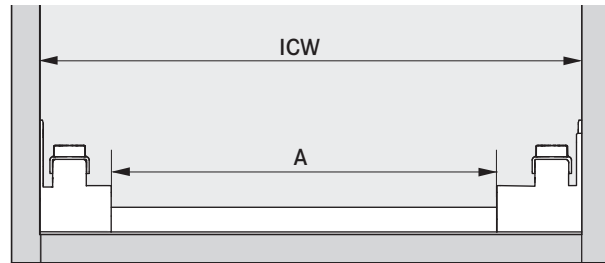
Drawer bottom length B	
Slide length	Bottom length
270 [11"]	251 [9 7/8"]
350 [14"]	331 [13 1/16"]
400 [16"]	381 [15"]
450 [18"]	431 [16 15/16"]
500 [20"]	481 [18 15/16"]
550 [22"]	531 [20 7/8"]



Slide Length	D	E	F
270 [11"]	197 [7 3/4"]	289 [11 3/8"]	280 [11 1/32"]
350 [14"]	261 [10 1/4"]	369 [14 17/32"]	360 [14 3/16"]
400 [16"]	261 [10 1/4"]	419 [16 1/2"]	410 [16 5/32"]
450 [18"]	325 [12 13/16"]	469 [18 15/32"]	460 [18 1/8"]
500 [20"]	325 [12 13/16"]	519 [20 7/16"]	510 [20 3/32"]
550 [22"]	325 [12 13/16"]	569 [22 13/32"]	560 [22 1/16"]

Assembly Details

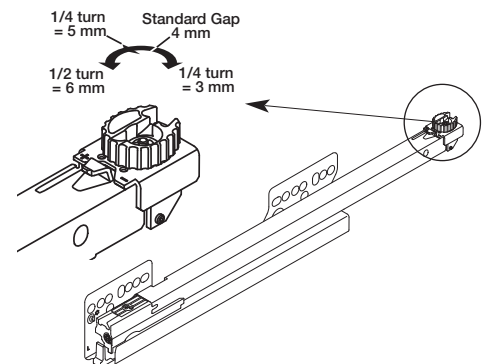
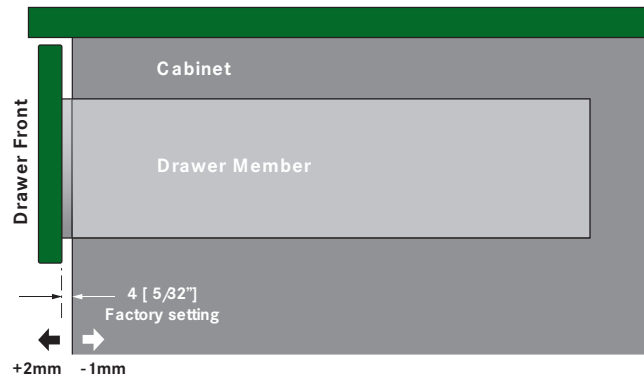
Synchronization bar length A



$$A = ICW - 97 [3 13/16"]$$

(±0.5mm Tolerance)

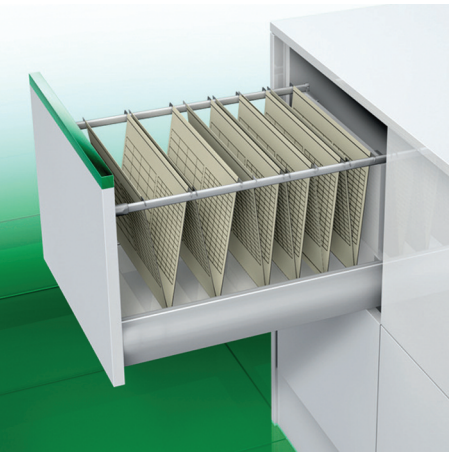
Front depth adjustment



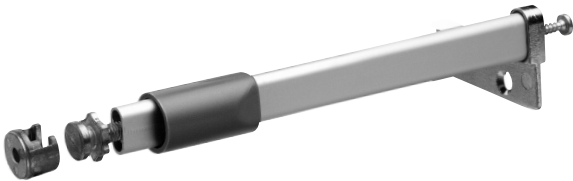
For additional assembly information refer to Assembly Details on previous pages for applicable drawer configuration.

File Railing System

Drawer Organization for Nova Pro



- Keep hanging files organized in file drawers
- File railing system is independent from drawer system
- Complements Nova Pro Metallic finish
- Efficient and economical solution

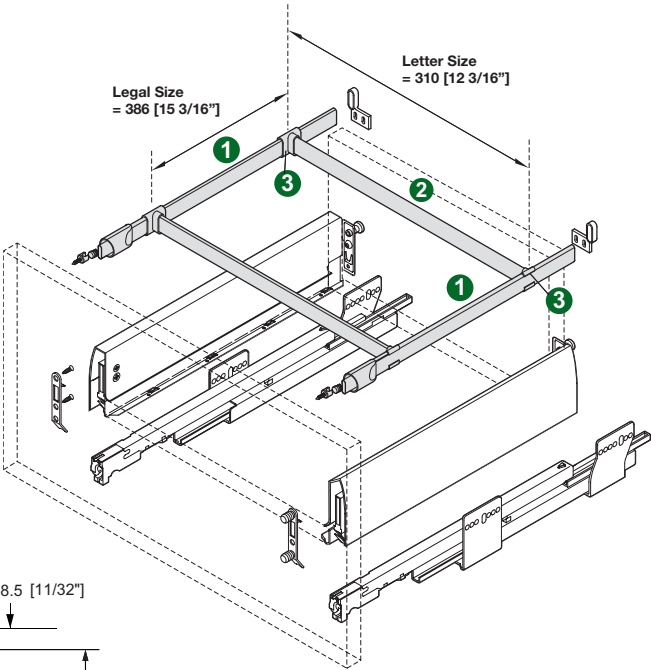


File rail system consists of:
 2 Side rails, 2 front fixing parts, 2 back fixing parts and 2 cover caps

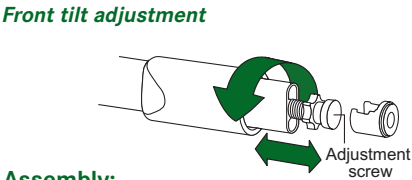
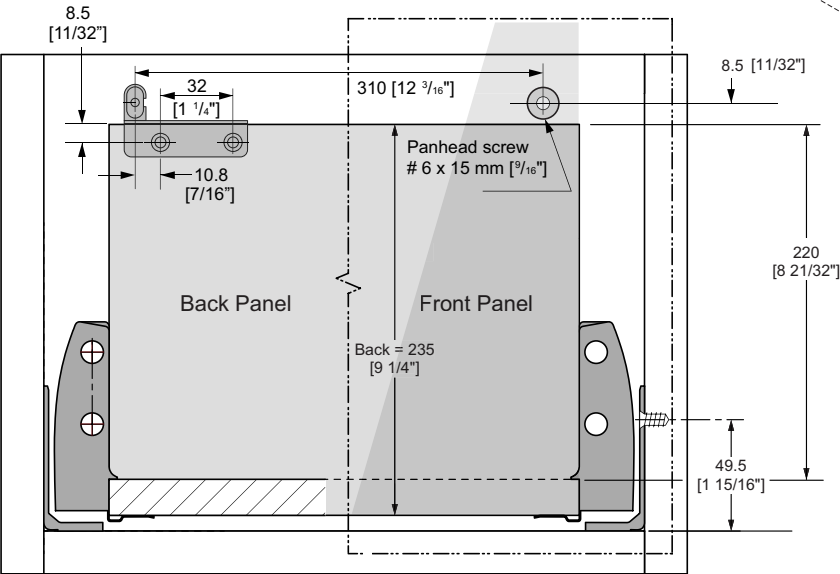
Components

ID	Description	Length*	Item No.	PU
1	File railing set	500 [20"]	3595.500.22	20
		550 [22"]	3595.550.22	
2	Divider Rail	1200 [47 1/2"]	3597.1200.22	20
3	Divider Clip		3599	20

*Inch equivalent length is nominal.



Assembly Details

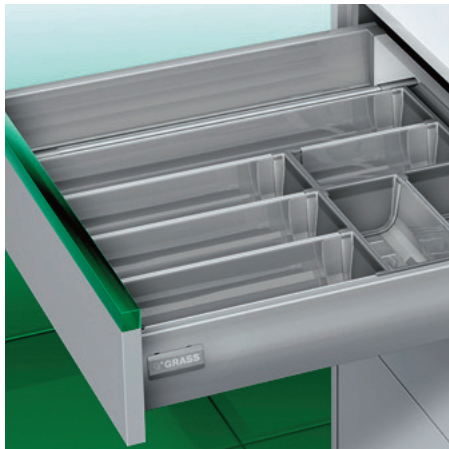


- Assembly:**
1. Prepare back, bottom and front.
 2. Mark position of side rail.
 3. Screw-on back and front fixing parts.
 4. Attach side rail to back bracket, then insert into front bracket.
 5. Adjust if necessary and slide cover cap forward.

PU = Packing Unit

Magic Sorto

Drawer Organization for Nova Pro

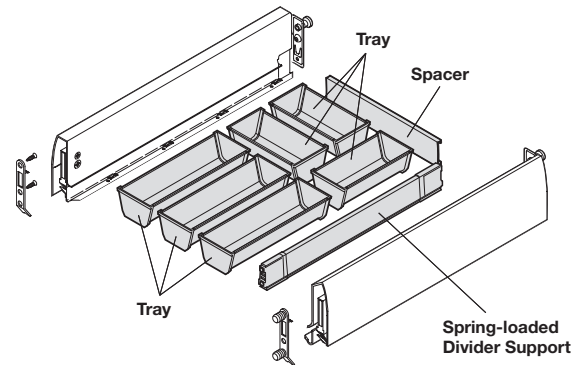


Drawer Organization that puts everything in its place

- Modular expandable system
- Individual components, dishwasher safe
- Safe for foods, hygienically approved
- Trays made of stainless steel

Components

ID	Description	Length *	Item No.	PU
1	Magic Sorto Set NL 500 B3	500 [20"]	66516-01	1 set



*Length is nominal
NL - Nominal length

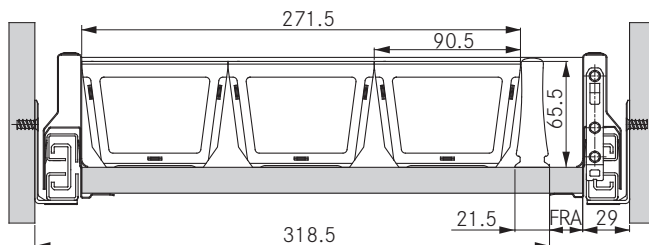
1 Magic Sorto Set NL 500 B3



NL 500 and cabinet widths
from 450 mm or more.

Consisting of:

- 3 Sorto trays 270 x 90 mm
- 3 Sorto trays 180 x 90 mm
- 1 Spacer 270 mm
- 1 Divider Support



Nova Pro

Drawer Stabilizer Mechanism



- For use on drawers that are wider than 36” and require extra stabilization due to heavy loading.
- Tracks locate on the cabinet sides 32 mm above the cabinet members
 - Aluminum stabilizer bar is cut to length to fit the cabinet
 - Brackets register on the back of the drawer sides and are attached with screws to the drawer back panel
 - Gears and stabilizer bar snap into place
- Extra depth clearance required**
- Minimum interior clearance = drawer slide length + 19 mm (3/4”)

- How to specify hardware:**
1. Select the stabilizer bar kit. Fits cabinets with outside cabinet width of 1200mm [47 1/4”] or less.
 2. Select a track set to match the drawer slide length set. Options are 500 or 550mm.

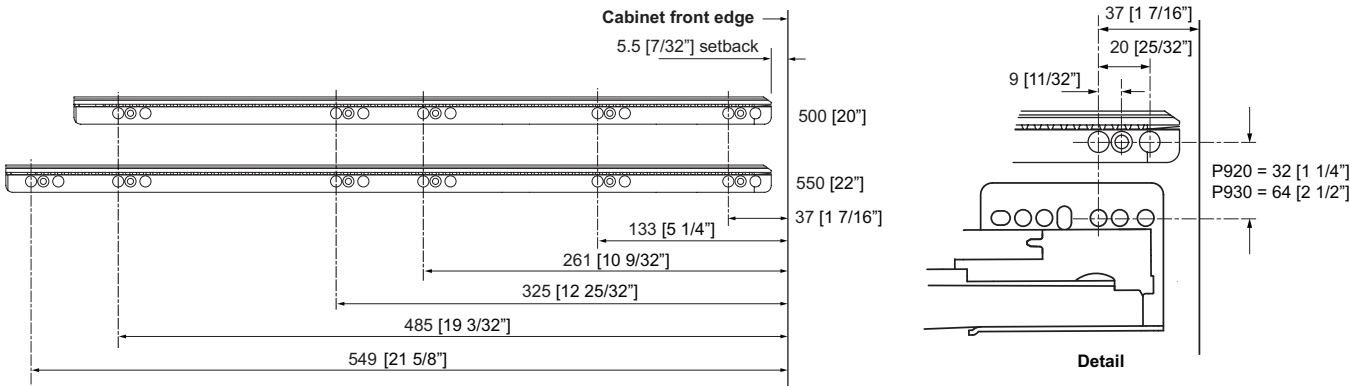
Components

ID	Description	Length	Reference No.	Item No.	PU
1	Stabilizer bar kit	For outside cabinet width 1200 [47 1/4"] or less	7600-1200-STAB	66388-04	10
2					
3					
4	Track set	500 [20"]	7600-500-TRAK	50865-04	10
		550 [22"]	7600-550-TRAK	50866-04	10

Minimum interior cabinet depth	
Slide length	Min. depth
500 [20"]	519 [20 7/16"]
550 [22"]	569 [22 3/8"]



Assembly Details



PU = Packing Unit

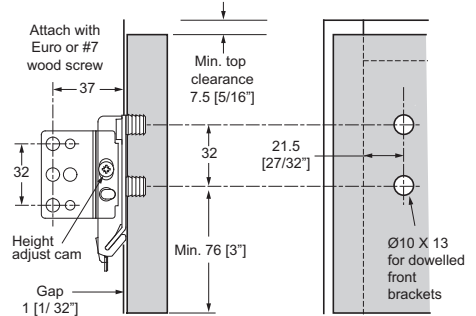
Nova Pro

Accessories

Blind panel bracket set

Hardware to mount panels to the cabinet sides, such as sink-base false fronts.

- Quick attachment and removal like Nova Pro drawer fronts
- Provides $\pm 2\text{mm}$ [$3/32"$] height adjustment and $\pm 1\text{mm}$ [$1/32"$] side adjustment
- Uses Nova Pro front brackets, screw-on or dowelled (order separately)



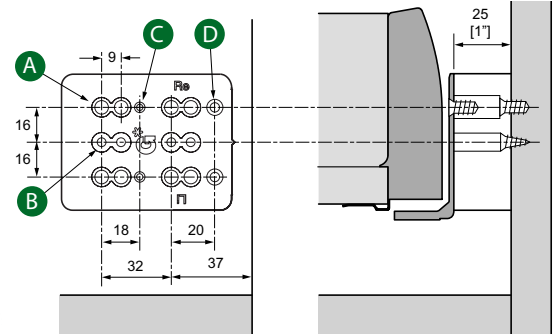
Description	Item No.	PU
760 Blind panel bracket	27739-04	10

Note: If a cross rail beneath the false front is used, clearance for release triggers must be provided.

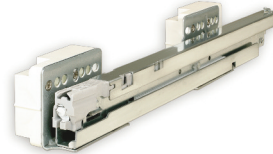
Cabinet member spacer

Used to space slides away from the cabinet sides on interior drawer applications.

- 25 mm [$1"$] thick, white molded plastic
- Universal, non-handed
- Can be mounted with Euro or wood screws
- Use (2) per side



- A** Euro screw spacer attachment
- B** Wood screw spacer attachment
- C** Wood screw slide attachment
- D** Euro screw slide attachment

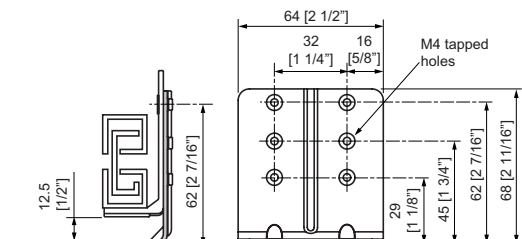
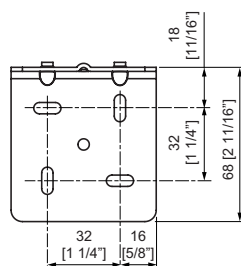


Interior drawer bracket kit

Used to mount slides to a cabinet bottom or shelf for interior roll out trays.

Kit includes:

- (4) non-handed zinc plated steel brackets
- (8) M4 screws to attach slides to brackets and (8) $\#8 \times 5/8"$ truss head screws to mount brackets to cabinet



Description	Item No.	PU
Interior drawer bracket	00443-06	25



Grass America Inc.
1202 NC Highway 66 South
Kernersville, NC 27284

Phone 1-800-334-3512
Fax 1-800-525-8406

Internet: www.grassusa.com
E-Mail: info@grassusa.com

GRASS Canada Inc.
10 Newgale Gate, Unit 7
Toronto, ON M1X 1C5

Phone: 1-800-461-4975
Fax: 1-416-335-5907

Internet: www.grasscanada.com
E-Mail: info@grasscanada.com

www.grassusa.com