

11 BADGER - FIRE EXTINGUISHER PARTS

DRY CHEMICAL

ADV-250, ADV-550, ADV-10, ADV-20

FIG. P/N SERVICE & MAINTENANCE PART DESCRIPTION

1	21008376B	Valve Assembly 2½ lb Model
1	21008377B	Valve Assembly 5½, 10, 20 lb Model
1B	8516B	Hanger Loop
1C	19622B	Hanger Loop Screw
2		Pull Pin
N/S	23535B	Chain (Nylon) for Pull Pin
3		Tamper Seal
4	21007875B	Lever
5	320751B	Lever Rivet
6	G100	Gauge - 100 psi 2½ lb Model
6	G195	Gauge - 195 psi 5½, 10, 20 lb Model
7	21007873B	Handle 2½, 5½ lb Model
7	21007874B	Handle 10, 20 lb Model
8	320750B	Handle Rivet
9	340036K	Neck Seal
10	440068K	Valve Stem
12	322063B	Spring
13	21007861B	Siphon Tube Assembly 2½ lb Model
13	21007862B	Siphon Tube Assembly 5½ lb Model
13	21007863B	Siphon Tube Assembly 10 lb Model
13	21007864B	Siphon Tube Assembly 20 lb Model
N/S	320167K	Siphon Tube O-Ring
14	21005805B	Nozzle 2½ lb Model
14	21006335B	Hose & Nozzle Assembly 5½ lb Model
14	21007908B	Hose & Nozzle Assembly 10 lb Model
14	21006338B	Hose & Nozzle Assembly 20 lb Model

FIG.	P/N	ACCESSORY PART DESCRIPTION
21		Universal Hose Strap/Clip
22	466401K	Heavy-Duty Vehicle Bracket 2½ lb Model
22	5DC	Heavy-Duty Vehicle Bracket 5½ lb Model
22	5HB	Heavy-Duty Vehicle Bracket 10 lb Model
22	15HB	Heavy-Duty Vehicle Bracket 20 lb Model
N/S	1141K	Wall Hook 2½ lb model
N/S	WH5	Wall Hook 5½ & 10 lb Model
N/S	14260K	Wall Hook 20 lb Model
N/S	AD23	Recharge Adapter
N/S	HTA18	Hydrostatic Test Adapter



DRY CHEMICAL

275RB-1, 250MB-1, 5RB-4H, 5MB-4H, 5MB-5H, 5MB-6H, 5MB-7H, 5MB-8H, 6MB-4H, 10MB-3H, 10MB-4H, 10MB-8H

HALON

2.5-1211B, 5-1211B, 9-1211B-S, 9-1211B-T

HALOTRON I

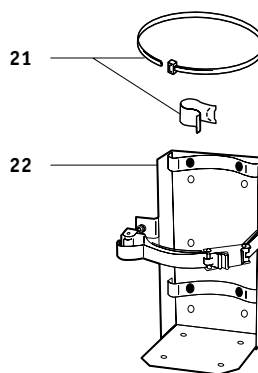
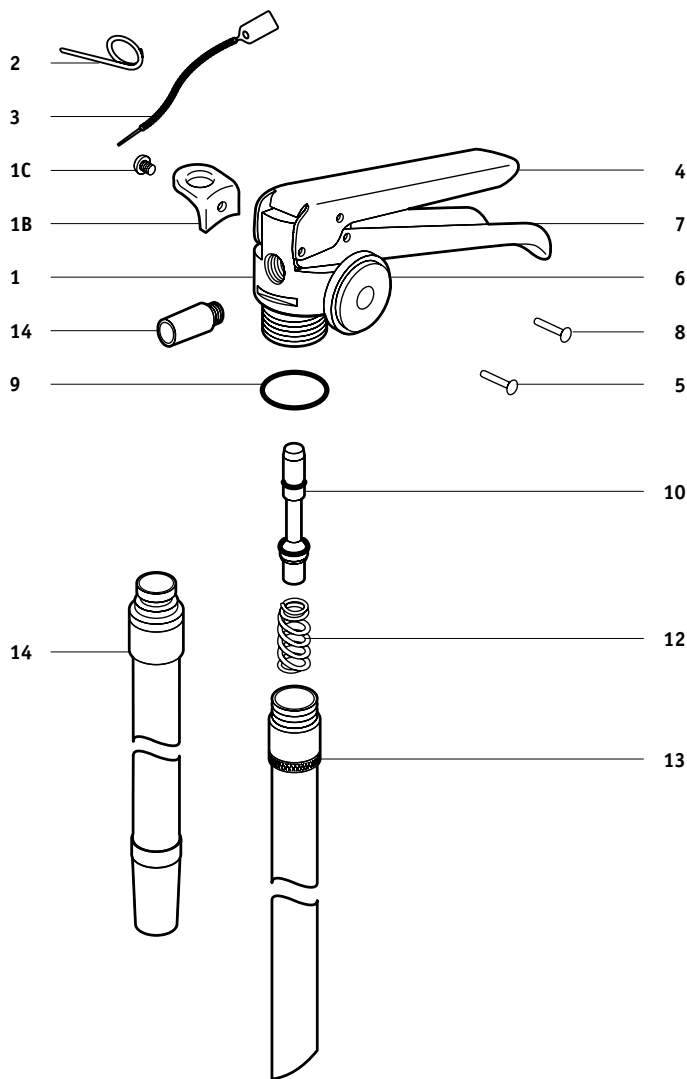
2.5HB, 5HB

FIG. P/N SERVICE & MAINTENANCE PART DESCRIPTION

1	19824B	Valve Assembly 5MB-5H, 5MB-6H, 5MB-7H, 5MB-8H
1	19520B	Valve Body
1B	8516B	Hanger Loop
1C	19622B	Hanger Loop Screw All, Except 275RB-1, 250MB-1, 2.5-1211B
		Pull Pin
2		Tamper Seal
4	18363B	Lever
5	18404B	Lever Rivet
6	G195	Gauge - 195 All Dry Chemical
6	G125H	Gauge - 125 (Halon) 2.5 1211B, 5-1211B
6	G195H	Gauge - 195 (Halon) 9-1211B-S, 9-1211B-T
6	G100T	Gauge - 100 (Halotron I) All Halotron I
7	18361B	Handle
8	16517B	Handle Rivet
9	20745B	Collar O-Ring All Dry Chemical, Halon
9	23074B	Collar O-Ring All Halotron I
10	18672B	Valve Stem All Halon
10	19010B	Valve Stem All Dry Chemical
10	23068B	Valve Stem All Halotron I
12	19393B	Spring 5MB-5H, 5MB-6H, 5MB-7H, 5MB-8H, 6MB-4H, 10MB-3H
13	19825B	Siphon Tube 5MB-5H, 5MB-6H, 5MB-7H, 5MB-8H
14	14816B	Nozzle 250MB-1
14	22363B	Hose & Nozzle Assembly 10MB-4H, 10MB-8H
14	19548B	Hose & Nozzle Assembly 5MB-4H, 5MB-5H
14	21028B	Hose & Nozzle Assembly 5MB-6H, 5MB-8H

FIG. P/N ACCESSORY PART DESCRIPTION

21		Universal Hose Strap/Clip All, Except 250MB-1, 275RB-1, 2.5-1211B
N/S	WH5	Wall Hanger All 5 - 10 lb, Except 10MB-3H, 9-1211B-S
N/S	WH15	Wall Hanger 10MB-3H, 9-1211B-S
N/S	MB250	Vehicle Bracket 250MB-1, 275RB-1, 2.5-1211B
N/S	MB5	Vehicle Bracket 5-6 lb
22	5DC	Heavy-Duty Vehicle Bracket 5-6 lb
22	5HB	Heavy-Duty Vehicle Bracket 10MB-4H, 10MB-8H, 10RB-7H, 9-1211B-T
22	10HB	Heavy-Duty Vehicle Bracket 10MB-3H, 9-1211B-S
N/S	AD21	Recharge Adapter
N/S	HTA45	Hydrostatic Test Adapter



11 BADGER - FIRE EXTINGUISHER PARTS

DRY CHEMICAL

B250M, B275BC, B250P, B5M, B5M1, B5BC, B5P, B10M, B10BC1, B10P1

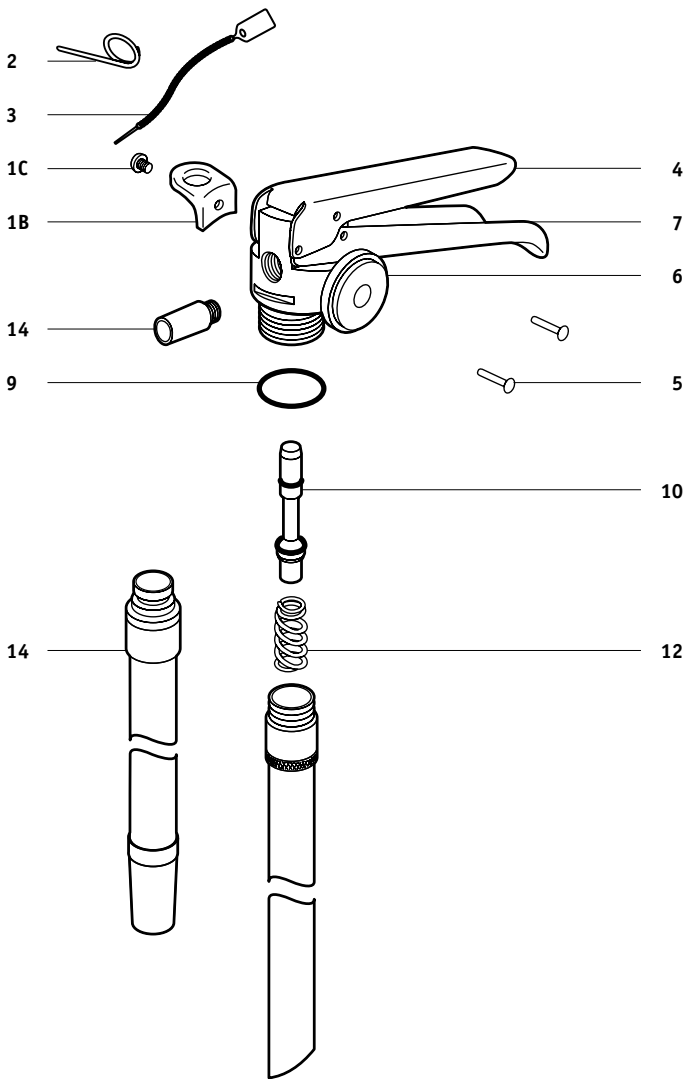
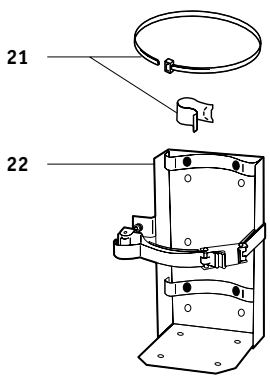


FIG.	P/N	SERVICE & MAINTENANCE PART DESCRIPTION
1B	23358B	Hanger Loop
1C	21390B	Hanger Loop Screw
2		Pull Pin
3		Tamper Seal
4	23351B	Lever
5	23352B	Lever Rivet
6	G195	Gauge - 195
7	23353B	Handle
9	20745B	Collar O-Ring
10	23389B	Valve Stem
12	19393B	Spring
14	23393B	Hose & Nozzle Assembly B5M, B5M1
14	23399B	Hose & Nozzle Assembly B10M

FIG.	P/N	ACCESSORY PART DESCRIPTION
21		Universal Hose Strap All 5, 10 lb
N/S	WH5	Wall Hanger All 5, 10 lb
N/S	MB250	Vehicle Bracket All 2½ lb
N/S	MB5	Vehicle Bracket All 5 lb
22	5DC	Heavy-Duty Vehicle Bracket All 5 lb
22	5HB	Heavy-Duty Vehicle Bracket All 10 lb
N/S	AD21	Recharge Adapter
N/S	HTA45	Hydrostatic Test Adapter



DRY CHEMICAL

5RB-2, 6MB-1, 10MB-1H, 10MB-2H, 10RB-2H, 10PB-2H, 20MB-1H, 20RB-1H, 20PB-1H, 20MB-2H, 20PB-2H, 20MB-6H, 20RB-7H

HALON 1211

13-1211B-S, 13-1211B-T, 17-1211B, 20-1211B

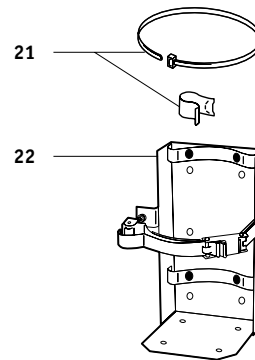
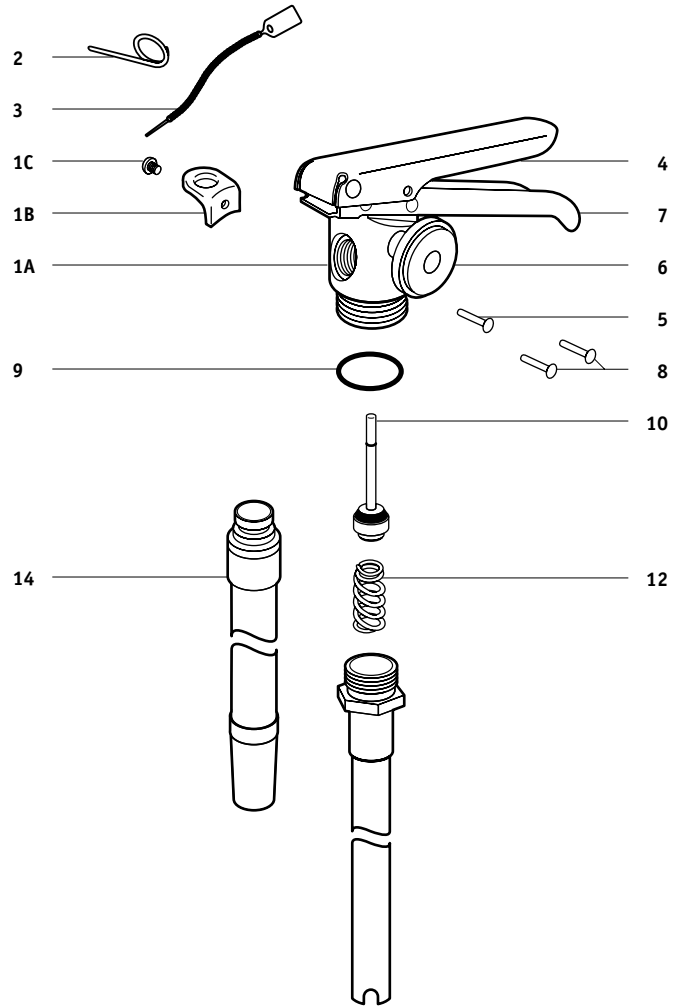
FIG. P/N SERVICE & MAINTENANCE PART DESCRIPTION

1A	16459B	Valve Body
1B	8516B	Hanger Loop
1C	19622B	Hanger Loop Screw
2		Pull Pin
3		Tamper Seal
4	16515B*	Lever
5	16518B	Lever Rivet
6	G195	Gauge - 195 Dry Chemical
6	G195H	Gauge - 195 (Halon) Halon
7	16513B	Handle
8	16517B	Handle Rivet
9	20746B	Collar O-Ring
10	12426B	Valve Stem Assembly Dry Chemical
12	7630B	Spring
14	20580B	Hose & Nozzle Assembly 20MB-2H, 20MB-6H

FIG. P/N ACCESSORY PART DESCRIPTION

21		Universal Hose Strap/Clip
N/S	WH5	Wall Hanger 10 lb Dry Chemical, 13-1211B-T
N/S	WH15	Wall Hanger 13-1211B-S
N/S	WH20	Wall Hanger 20 lb Dry Chemical, 17-1211B, 20-1211B
N/S	MB5	Vehicle Bracket 5 lb
22	5DC	Heavy-Duty Vehicle Bracket 5-6 lb
22	5HB	Heavy-Duty Vehicle Bracket 10 lb Dry Chemical, 13-1211B-T
22	10HB	Heavy-Duty Vehicle Bracket 13-1211B-S
22	15HB	Heavy-Duty Vehicle Bracket 20 lb Dry Chemical, 17-1211B, 20-1211B
N/S	AD24	Recharge Adapter
N/S	HTA44	Hydrostatic Test Adapter

*WHILE QUANTITIES LAST!



11 BADGER - FIRE EXTINGUISHER PARTS

DRY CHEMICAL

10MB-5H, 10MB-9H, 10RB-3H, 10PB-9H, 10RB-6H, 20MB-3H, 20RB-2H, 20PB-3H, 20MB-5H, 20RB-4H, B10M1, B20M, B20BC, B20P, B10M1-HF, B10P1-HF, B20M-HF, B20P-HF

HALOTRON I

11HB, 15.5HB

FIG. P/N SERVICE & MAINTENANCE PART DESCRIPTION

1B	23358B	Hanger Loop
1C	21390B	Hanger Loop Screw
2		Pull Pin, Stainless Steel
3		Tamper Seal
4	16438B	Lever
5	16633B	Lever Rivet
6	G195	Gauge - 195 All Dry Chemical
6	G125T	Gauge - 125 (Halotron I) All Halotron I
7	16437B	Handle
8	4095B	Handle Rivet
9	20746B	Collar O-Ring All Dry Chemical
9	23089B	Collar O-Ring All Halotron I
10	12426B	Valve Stem Assembly All Dry Chemical
10	23086B	Valve Stem Assembly All Halotron I
12	7630B	Spring
14	21407B	Hose & Nozzle Assembly 20MB-3H, 20MB-5H
14	22601B	Hose & Nozzle Assembly 10MB-9H, B10M1
14	21006168B	Hose & Nozzle Assembly All High Flow (HF) Models

FIG. P/N ACCESSORY PART DESCRIPTION

21		Universal Hose Strap/Clip
N/S	WH5	Wall Hanger 10 lb
N/S	WH20	Wall Hanger 20 lb
22	5HB	Heavy-Duty Vehicle Bracket 10 lb
22	15HB	Heavy-Duty Vehicle Bracket 20 lb
N/S	AD24	Recharge Adapter
N/S	HTA44	Hydrostatic Test Adapter

DRY CHEMICAL

P200RA, P275RA, P250MA

HALON

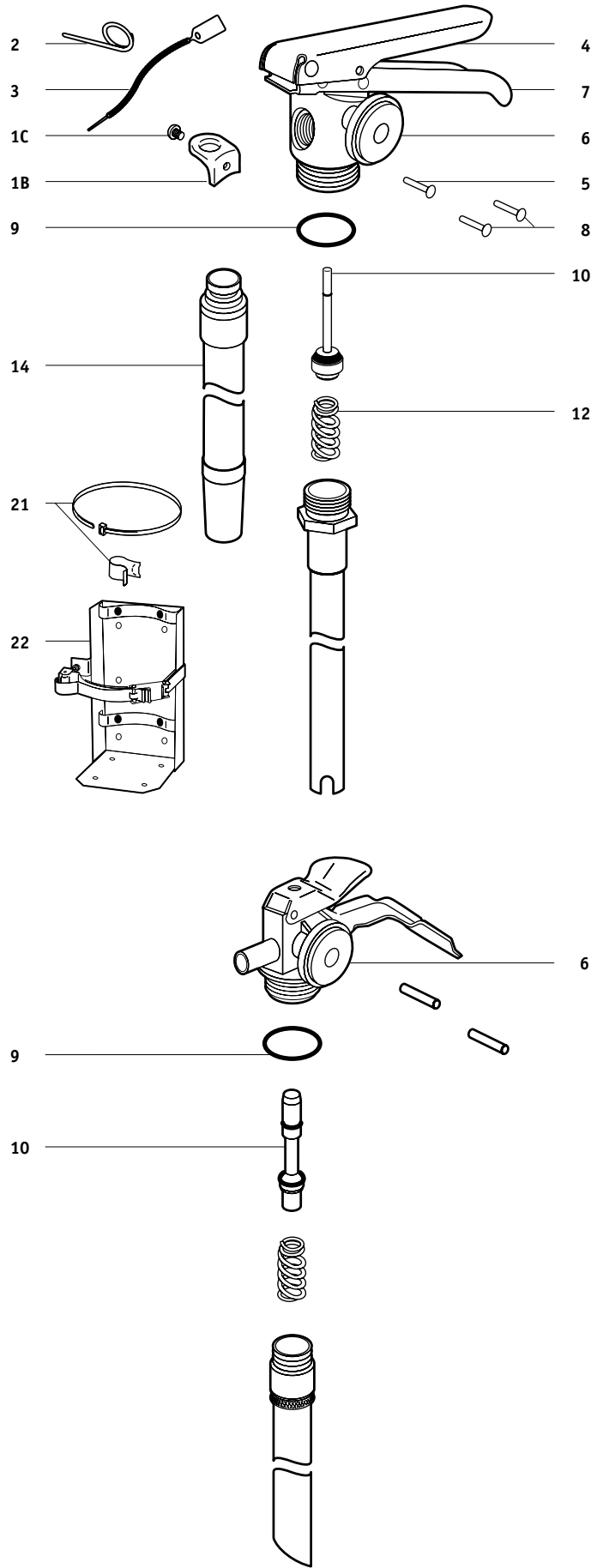
P1.25-1211A, P2.5-1211A

FIG. P/N SERVICE & MAINTENANCE PART DESCRIPTION

6	G100	Gauge - 100 P200RA
6	G195	Gauge - 195 P275RA, P250MA
6	G100H	Gauge - 100 (Halon) P1.25-1211A
6	G125H	Gauge - 125 (Halon) P2.5-1211A
9	20745B	Collar O-Ring
10	19010B	Valve Stem Assembly All Dry Chemical
10	18672B	Valve Stem Assembly All Halon

FIG. P/N ACCESSORY PART DESCRIPTION

N/S	AD21	Recharge Adapter P275RA, P250MA, P2.5-1211A
N/S	HTA45	Hydrostatic Test Adapter



DRY CHEMICAL

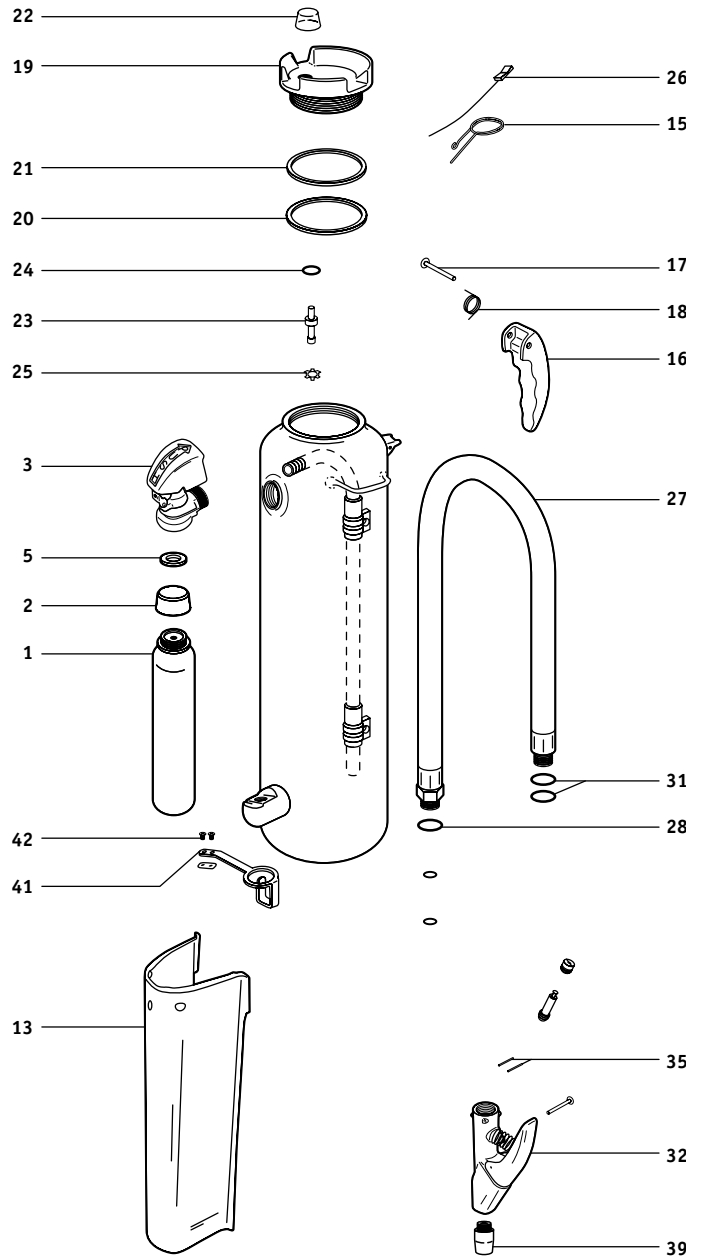
B-10-RG, B-10-RG-LT, B-10-PK, B-10-PK-LT, B-10-PK-HF, B-10-A, B-10-A-LT, B-10-A-HF, B-20-RG, B-20-RG-LT, B-20-PK, B-20-PK-LT, B-20-PK-HF, B-20-PK-HF-LT, B-20-A, B-20-A-LT, B-20-A-HF, B-20-A-HF-LT, B-30-RG, B-30-RG-LT, B-30-PK, B-30-PK-LT, B-30-PK-HF, B-30-PK-HF-LT, B-30-A, B-30-A-LT, B-30-A-HF, B-30-A-HF-LT

FIG P/N SERVICE & MAINTENANCE PART DESCRIPTION

1	440347BC	Cartridge All 10 lb, Except LT
1	440348BC	Cartridge All 20 lb, Except LT
1	440349BC	Cartridge All 30 lb, Except LT
3	440384BC	Cartridge Receiver Assembly
5	320934BC	Gasket, Cartridge Receiver
13	440325BC	Cartridge Guard Assembly All 10 lb
13	440324BC	Cartridge Guard Assembly All 20, 30 lb
15	320911BC	Ring Pin
16	23678BC	Carrying Handle
17	320837BC	Carrying Handle Rivet
18	320838BC	Carrying Handle Spring
19	440314BC	Fill Cap Assembly w/ Indicator
20	320779BC	Gasket, Fill Cap
21	320780BC	Quad Ring, Fill Cap
22	340744BC	Cap, Plastic
23	320768BC	Stem, Indicator
24	320769BC	Quad Ring
25	320778BC	Retaining Ring
27	440332BC	10 lb Hose Assembly
27	440333BC	20 lb Hose Assembly
27	440334BC	30 lb Hose Assembly
28	320914K	Hose O-Ring
31	320905BC	Nozzle O-Ring
32	440360BC	Nozzle Assembly (Less Tip)
35	320958BC	Pin, Nozzle
39	341010BC	Nozzle Tip 20 lb ABC
39	341016BC	Nozzle Tip 30 lb ABC
39	341017BC	Nozzle Tip 30 lb Regular Dry Chemical
41	320928BC	Nozzle Holster All 20, 30 lb
42	320929BC	Nozzle Holster Screw

FIG P/N ACCESSORY PART DESCRIPTION

26	VIS10	Visual Inspection Seal
2	LHSC	Cartridge Shipping Cap
N/S	ACWH1	Hanger Hook
N/S	DCA	Discharge Adapter



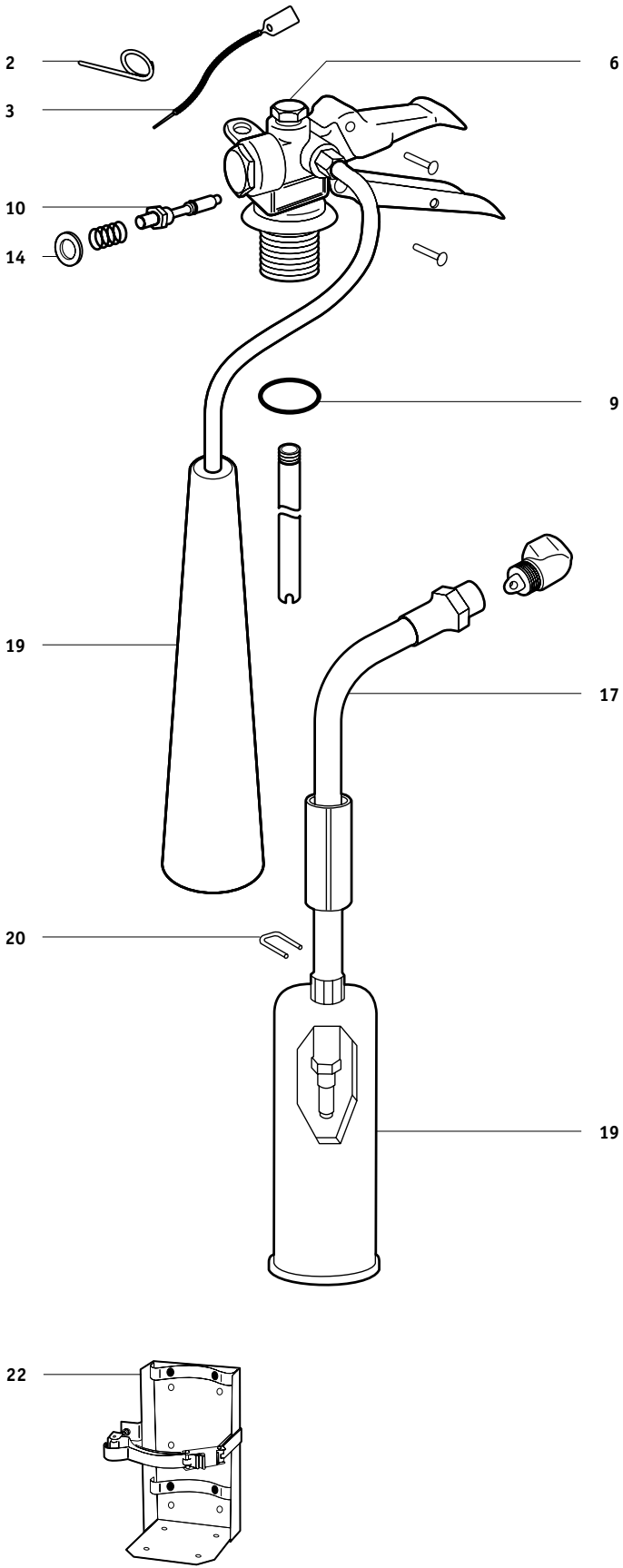
11 BADGER - FIRE EXTINGUISHER PARTS

CARBON DIOXIDE

B5H-1, B5H-1A, B10H-2, B10HA, B15H-2, B15HA, B20H-2, B20HA

FIG.	P/N	SERVICE & MAINTENANCE PART DESCRIPTION
2		Pull Pin, Stainless Steel
3		Tamper Seal
6	24643B	Safety Disc, Gasket, & Nut Assembly
9	16464B	Collar O-Ring B5H-1A, B10HA, B15HA, B20HA
10	5558B	Valve Stem Assembly
14	3524B	Retainer Washer
17	23005B	Hose & Nozzle Assembly (.110) 10 lb
17	23010B	Hose & Nozzle Assembly (.099) 15-20 lb
19	1840B	Horn w/ Handle All 10 lb
19	1841B	Horn w/ Handle All 15-20 lb
20	1838B	U-Pin All 10, 15, 20 lb

FIG.	P/N	ACCESSORY PART DESCRIPTION
N/S	RDBACLIP	Horn Clip All 10, 15, 20 lb
N/S	RDS15	Strap B10HA, B15HA
N/S	RDS20	Strap B20HA
N/S	SET6	Hardware Set 10-20 lb Aluminum Cylinder
N/S	BL209	Replacement Nameplate (Non-UL) All 5 lb
N/S	BL210	Replacement Nameplate (Non-UL) All 10, 15, 20 lb
N/S	WH5	Wall Hanger All 5 lb
N/S	WH15	Wall Hanger All 10, 15 lb
N/S	WH20	Wall Hanger All 20 lb
22	5HB	Heavy-Duty Vehicle Bracket All 5 lb
22	15HB	Heavy-Duty Vehicle Bracket All 10, 15 lb
22	20HB	Heavy-Duty Vehicle Bracket All 20 lb

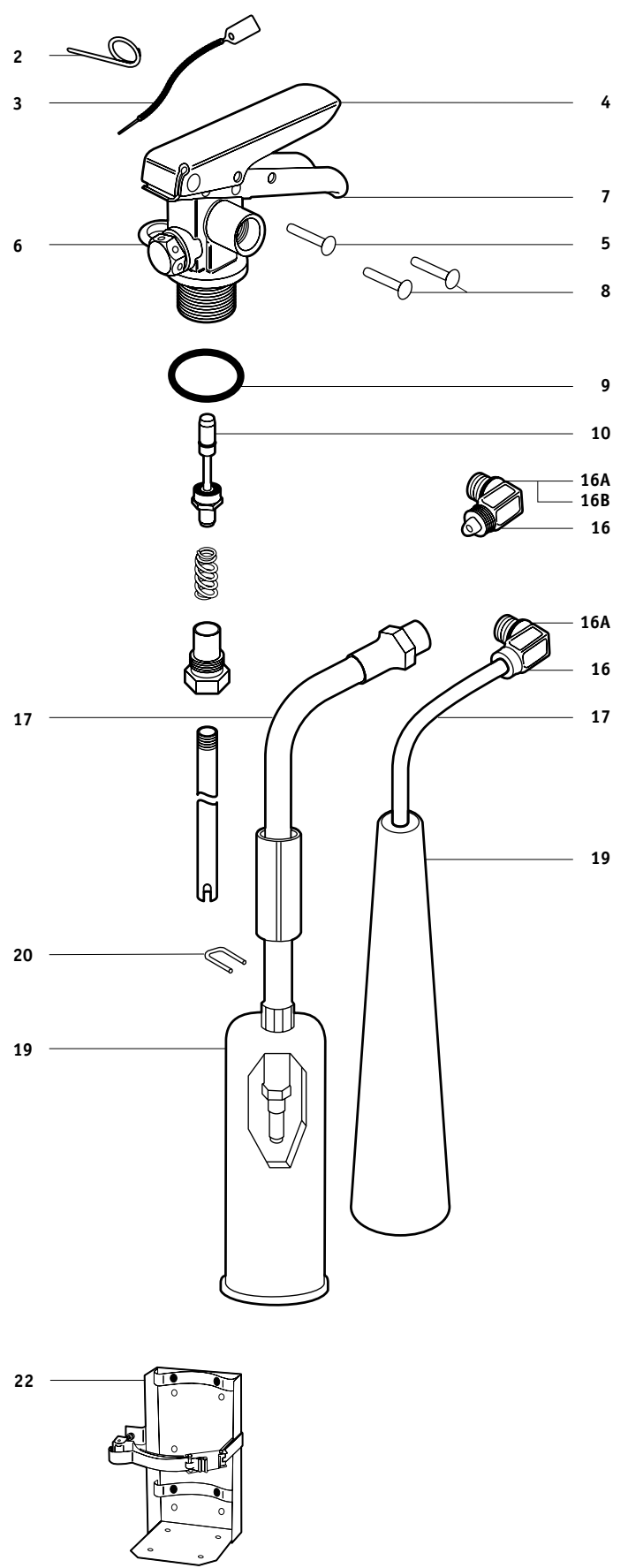


CARBON DIOXIDE

B5V, B10V, B15V, B20V

FIG.	P/N	SERVICE & MAINTENANCE PART DESCRIPTION
2		Pull Pin, Stainless Steel
3		Tamper Seal
4	16438B	Lever
5	16633B	Lever Rivet
6	24643B	Safety Disc, Gasket, & Nut Assembly
7	16437B	Handle
8	4095B	Handle Rivet
9	16464B	Collar O-Ring
10	20981B	Valve Stem Assembly
16	20991B	Elbow B10V, B15V, B20V
16A	21101B	O-Ring for Elbow
16B	3524B	Washer for Elbow
17	21116B	Discharge Tube B5V
17	23005B	Hose & Nozzle Assembly (.110) B10V
17	23010B	Hose & Nozzle Assembly (.099) B15V, B20V
19	8886B	Horn B5V
19	1840B	Horn w/ Handle B10V
19	1841B	Horn w/ Handle B15V, B20V
20	1838B	U-Pin B10V, B15V, B20V

FIG.	P/N	ACCESSORY PART DESCRIPTION
N/S	RDS15	Strap B10V, B15V
N/S	RDS20	Strap B20V
N/S	RDBACLIP	Horn Clip B10V, B15V, B20V
N/S	SET6	Hardware Set B10V, B15V, B20V
N/S	BL209	Replacement Nameplate (Non-UL) B5V
N/S	BL210	Replacement Nameplate (Non-UL) B10V, B15V, B20V
N/S	WH5	Wall Hanger B5V
N/S	WH15	Wall Hanger B10V, B15V
N/S	WH20	Wall Hanger B20V
22	5HB	Heavy-Duty Vehicle Bracket B5V
22	15HB	Heavy-Duty Vehicle Bracket B10V, B15V
22	20HB	Heavy-Duty Vehicle Bracket B20V



11 BADGER - FIRE EXTINGUISHER PARTS

WATER/LOADED STREAM

WP61, PWA-61

WET CHEMICAL

WC-10, WC-25, WC-100, WC-250

AR-AFFF FOAM

F-100, F-250

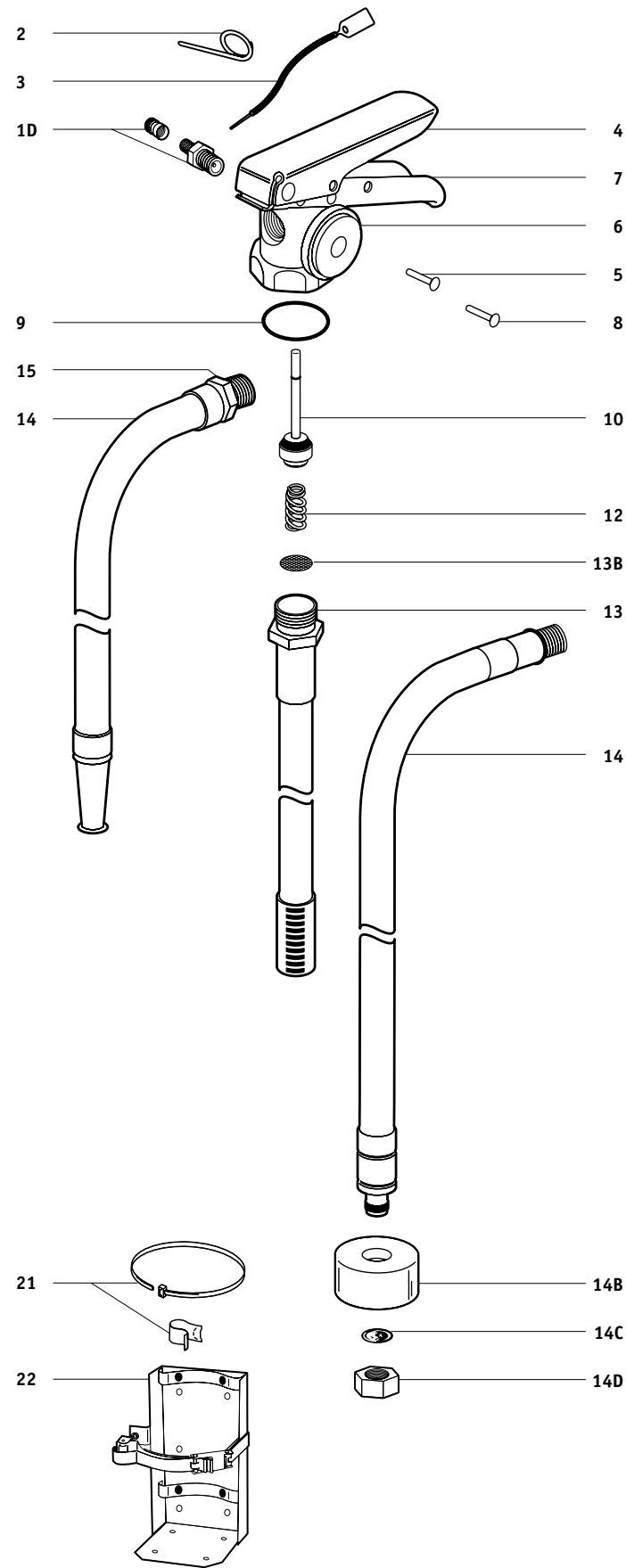
FIG. P/N SERVICE & MAINTENANCE PART DESCRIPTION

2		Pull Pin, Stainless Steel
3		Tamper Seal
4	16438B	Lever
5	16633B	Lever Rivet
6	G100WS	Gauge - 100
7	16437B	Handle
8	4095B	Handle Rivet
9	20746B	Collar O-Ring
10	12426B	Valve Stem Assembly
12	7630B	Spring
13	14992B	Siphon Tube Assembly
		WP61, PWA-61, WC-25, WC-250
13	21539B	Siphon Tube Assembly
		WC-10, WC-100
13B	22445B	Screen Disk for Siphon Tube
		WC-10, WC-25, WC-100, WC-250
14	8844B	Hose & Nozzle Assembly
		WP61, PWA-61
14	23161B	Hose Assembly w/ Tip (Replaces 22338)
		WC-10, WC-25, WC-100, WC-250
14B	23162B	Finger Guard
		WC-10, WC-25, WC-100, WC-250
14C	KR97054	Foil Inspection Disc, Pkg/10
		WC-10, WC-25, WC-100, WC-250
14D	KR97290	Nozzle Tip Cap, Pkg/10
		WC-10, WC-25, WC-100, WC-250
N/S	AC100	Wet Chemical Recharge, 6lit
		WC-100
N/S	AC250	Wet Chemical Recharge, 2 1/2 gal
		WC-250

FIG. P/N ACCESSORY PART DESCRIPTION

1D	AV1*	Pressure Valve & Cap Assembly
N/S	CORE*	Pressure Valve Core, Pkg/50
N/S	AVC*	Pressure Cap, Pkg/50
21		Universal Hose Strap/Clip
		WC-10, WC-25, WC-100, WC-250, F-100, F-250
N/S	792B	Loaded Stream Anti-Freeze Charge
		PWA-61
N/S	WH2	Wall Hanger
22	15HB	Heavy-Duty Vehicle Bracket
N/S	AD24	Recharge Adapter
		WP61, PWA-61, WC-100, WC-250, F-100, F-250
N/S	HTA10	Hydrostatic Test Adapter

*WP61 AND PWA-61 UP TO 2002.



STORED PRESSURE DRY CHEMICAL WHEELED

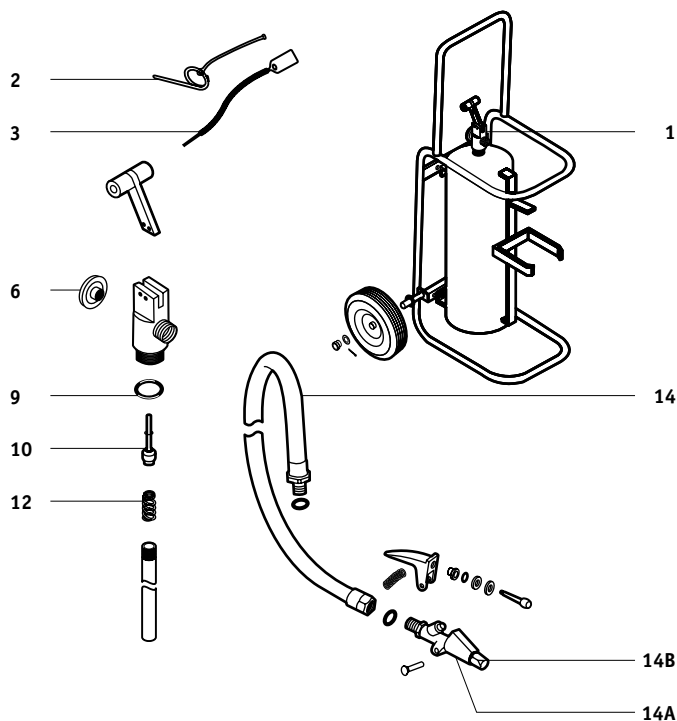
50RB, 50MB, 50PB

HALON WHEELED

50-1211B

FIG.	P/N	SERVICE & MAINTENANCE PART DESCRIPTION
1	Z20135BD	Valve Assembly (Special Order) Dry Chemical
2		Pull Pin, Stainless Steel
3		Tamper Seal
6	G240	Gauge - 240 Dry Chemical
9	20746B	Collar O-Ring
10	12426B	Valve Stem Assembly Dry Chemical
12	7630B	Spring
14	Z20131BD	Hose, 1/2" x 25' (Special Order)
14A	Z440360BD	Nozzle Assembly (Less Tip) (Special Order)
14B	Z20133BD	Nozzle Tip (Special Order) 50MB

FIG.	P/N	ACCESSORY PART DESCRIPTION
N/S	6160A	Recharge Adapter
N/S	HTA44	Hydrostatic Test Adapter



STORED PRESSURE DRY CHEMICAL WHEELED

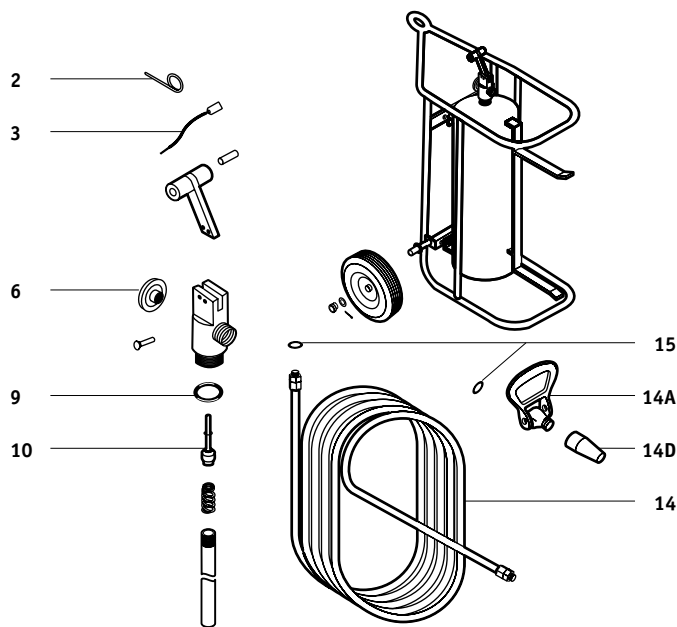
150RB, 150MB, 150PB

HALON WHEELED

150-1211B

FIG.	P/N	SERVICE & MAINTENANCE PART DESCRIPTION
2		Pull Pin, Stainless Steel
3		Tamper Seal
6	G240	Gauge - 240 Dry Chemical
9	20510B	Collar O-Ring
10	23658BD	Valve Stem Assembly (Special Order)
14	Z20079BD	Hose, 3/4" x 50' (Special Order)
14A	Z23123BD	Nozzle Assembly (Less Orifice) (Special Order) Dry Chemical
14D	Z23446BD	Nozzle Orifice (Special Order) 150RB
14D	Z23447BD	Nozzle Orifice (Special Order) 150MB
N/S	Z20556BD	Swivel (Special Order)
15	4045B	Washer

FIG.	P/N	ACCESSORY PART DESCRIPTION
N/S	5720A	Recharge/Hose Hydrotest Adapter
N/S	HTA24	Hydrostatic Test Adapter



CYLINDER OPERATED DRY CHEMICAL WHEELED

B150A, B150AL, B125K, B125KL, B150R, B150RL, B150-A1, B150AL-1, B125K-1, B125KL-1, B150R-1, B150RL-1

FIG.	P/N	SERVICE & MAINTENANCE PART DESCRIPTION
3	3031BD	Pressure Regulator
8	3034B	Nitrogen Hose
10	4045B	Chemical Hose & Nozzle Gasket
11	Z20079BD	Chemical Hose Assembly (Special Order)

FIG.	P/N	ACCESSORY PART DESCRIPTION
N/S	CS10	Nitrogen Valve Lock Wire

