

ROSETTE CUTTER SYSTEM

Carbide Tipped



- The only Rosette Cutter featuring replaceable carbide tipped insert knives
- Fifteen different standard knife profiles are available along with three sizes of blank knives for custom grinding
- Optional shaper cutter head available to make matching moldings
- Precision balanced for high speed operation on a heavy-duty drill press, milling machine, lathe or shaper. All cutter bodies are manufactured using the highest quality tool steel
- The Rosette Cutter works well in softwoods, hardwoods, MDF and solid surface materials such as Corian®, Gibraltar®, Surell®, etc

NOTE: You must order two of each of the selected knife for proper operation.

Packing & Sold In: Each

Item#	Description
AA59004	Rosette Set Includes: 3-1/8" diameter Rosette Cutter, (1/2" shank) hex key & custom wood box. Knives sold separately
AA59010	Knife profile
AA59020	Knife profile
AA59050	Knife profile

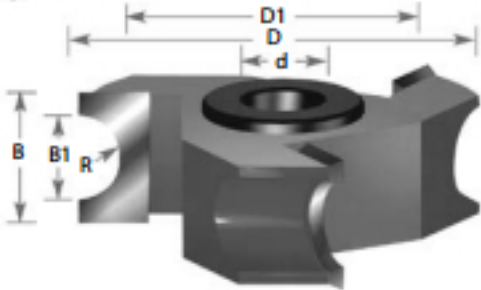
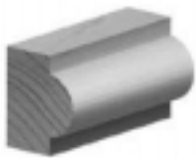
**NEW
ITEM!**



BULL NOSE CUTTER

Packing & Sold In: Each

Item#	Description	DIMENSIONS					
		D	D1	B	B1	R	d
AA929	1" Bead	2-5/8"	1-5/8"	1-1/2"	1"	1/2"	1/2" & 3/4"



STRAIGHT EDGE CUTTER

Packing & Sold In: Each

Item#	DIMENSIONS		
	D	B	d
AA912	2-5/8"	3/4"	1/2" & 3/4"

