

# Product Catalog



Experience a safer  
and more open world



# Product Catalog

# About Alarm Controls

Alarm Controls maintains our commitment to supplying quality access control equipment, just as we have since we were founded in 1971.

For over 50 years, we have excelled at meeting our customers' requirements with a broad line of standard products at an exceptional value.

Alarm Controls is proud to be part of ASSA ABLOY, more specifically part of the group based out of Phoenix, AZ, offering premium customer care, ease of ordering and short lead times that our customers have grown accustomed to over the years.

We remain committed to delivering custom solutions, too! As always,

"YOU DREAM IT. WE BUILD IT."



**ASSA ABLOY**

Experience a safer  
and more open world

## Magnetic Locks & Accessories

320S	3
600 Series	4-6
1200 Series	7-9
Delayed Egress	10
Lock N' A Box	11
Magnetic Lock Comparison Chart	12-13

## Magnetic Lock Accessories

Drop Plates, Dress Covers	15
GDH Glass Door Holder, Filler Plates, Installation Tools	16
L Brackets, Z Brackets	17-18
Armature & Mounting Plates	18
Cross Reference Guide	19-20

## Request to Exit Stations & Egress Devices

KR Series - Latching	22
TS-32 - Latching	23
PBL Series - Latching	24
PBM Series - Momentary	25
EB Series - Request to Exit Egress Stations	26
Request to Exit Stations	27-41
Request to Exit Stations with Pneumatic Push Button Timers	42-45
Vandal Resistant Push Buttons	46-48
Under Desk Door Release	49
Emergency Door Releases	50-52
No Touch Sensors	53-54
Hazardous Environment Request to Exit	55
Push Plates	56-57
Motion Sensor	58
Egress Devices - Push Bars	59
Switch Information Guide	60

## Remote Plates

Remote Plates - Mini	62-63
Remote Plates - Remote Key Switch Plates	64-65
Remote Plates - Narrow, Single	66-78

## Key Switches

KA Series - Ace Terminal	80
KA Series - Flat Key	81
Mortise Cylinder Stations	82
Mortise Cylinder Accessories	83
Mounting Plates	84

## Digital Keypads

KP-100A	86
KP-200	87
KP-300	88
KP-400	89

## Electric Strikes

AES-100	91
AES-200	92
AES-300	93
AES Series Comparison Chart	94

## Monitoring & Control Stations

Monitoring & Control Stations - Momentary & Latching	96-99
Desktop Consoles	100
Control Panels	101

## Power

Power Supplies	103
Distribution Boards	104-105
Door Loops	106

## Power Accessories

Accessories	108
Armored Cables	108

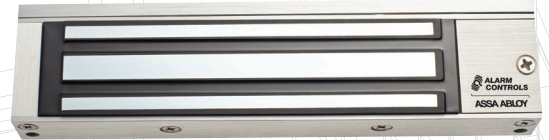
## System Accessories

Wireless Transmitters	110
Mounted Buzzers	111-112
Buzzers	112-115
Timers	115
Switches	116-117
LEDs	118

Warranty	119-120
----------	---------

Index	123-124
-------	---------

# MagneticLocks



# 320S

## Magnetic Cabinet Lock



Bracket mounted, single magnetic lock with 300 lbs holding force. This versatile maglock is easy to install, operates at 12 or 24 VDC and is ideal for cabinets and showcases.

### Features

#### Standard Features

- Built-in arc suppression
- Instant release, no hysteresis
- Self-drilling TEC screws
- Non-aluminum parts are plated to resist corrosion
- E-Z mount header bracket and template provided for easy installation, no special tools required
- Can be used with any access control system
- Ideal for cabinets and showcases
- Clear anodized, (US28) finish standard
- Limited lifetime warranty

#### Options

- **DURO** Duranodic finish (US 40) available, add DURO to end of standard part number when ordering.

### Specifications

#### Holding Force

- 300 lbs

#### Dimensions

- Magnet size: 6-11/16" L x 1-1/2" H x 1-3/16" W
- Armature size: 5-1/2" L x 1-1/4" H x 7/16" W

#### Electrical

- Operates on 12 or 24 VDC, field selectable
- Low current draw: 250 mA at 12 VDC, 130 mA at 24 VDC

#### Operating Temperature

- +14 to +131F [-10 to +55C]

# 600S, 600LB

## Single Magnetic Lock



Bracket mounted, single magnetic lock with 600 lbs holding force, that can be easily installed without special tools and used with any access control system. Ideal for high-use areas for traffic control in interior applications. Available with LED, bond sensor and door status signalling options.

## Features

### Standard Features

- **600S** Standard model
- **600LB** Magnetic lock with indicating LED, bond sensor, and door status sensor.
- Built-in arc suppression
- Instant release, no hysteresis
- Self-drilling TEC screws
- Non-aluminum parts are plated to resist corrosion
- E-Z mount header bracket and template provided for easy installation, no special tools required
- Can be used with any access control system
- Clear anodized (US28) finish standard
- Limited lifetime warranty

### Options

- **DURO** Duranodic finish (US 40) available, add DURO to end of standard part number when ordering.
- Dress covers in polished chrome and brass available. See "Magnetic Lock Accessories" for options.

### Electrical

- 12 or 24 VDC, field selectable
- Current draw: 505 mA at 12 VDC, 260 mA at 24 VDC
- 600LB bond sensor has SPDT 3A relay contacts

### Operating Temperature

- +14 to +131F [-10 to +55C]

## Specifications

### Certifications & Listings

- UL 294 recognized component
- UL 10C fire rated
- CAN/ULC-S104 fire door conformant
- UL 864 listed
- CAN/ULC-S527 listed

### Holding Force

- 600 lbs

### Dimensions

- Magnet size: 9-7/8" L x 1-11/16" H x 1" W
- Armature size: 7-1/4" L x 1-1/2" H x 1/2" W

# 600D, 600DLB

## Double Magnetic Lock



Double magnetic lock with 600 lbs of force, per door, allows control of both doors within a double door configuration. Bracket mounted and easy to install double magnetic locks can be used with any access control system and are available with LED, bond sensor and door status signalling to ensure a securely powered and sealed double door.

### Features

#### Standard Features

- **600D** Standard double magnetic lock
- **600DLB** Magnetic lock with indicating LED, bond sensor and door status sensor
- Built-in arc suppression
- Instant release, no hysteresis
- Self-drilling TEC screws
- Non-aluminum parts are plated to resist corrosion
- E-Z mount header bracket and template provided for easy installation, no special tools required
- Can be used with any access control system
- Clear anodized (US28) finish standard
- Limited lifetime warranty

### Options

- **DURO** Duranodic finish (US 40) available, add DURO to end of standard part number when ordering.
- Dress covers in polished chrome and brass available. See "Magnetic Lock Accessories" for options.

### Specifications

#### Certifications & Listings

- UL 294 recognized component
- UL 10C fire rated
- CAN/ULC-S104 fire door conformant
- ULC-S527 listed
- UL-864 listed

#### Holding Force

- 600 lbs, per magnet

#### Dimensions

- Magnet size: 19-3/4" L x 1-7/8" H x 1" W
- Armature size: 7-1/4" L x 1-1/2" H x 5/8" W

### Electrical

- 12 or 24 VDC, field selectable
- Current draw, per magnet: 505, mA at 12 VDC, 260 mA at 24 VDC
- 600DLB bond sensor has SPDT 3A relay contacts, per magnet

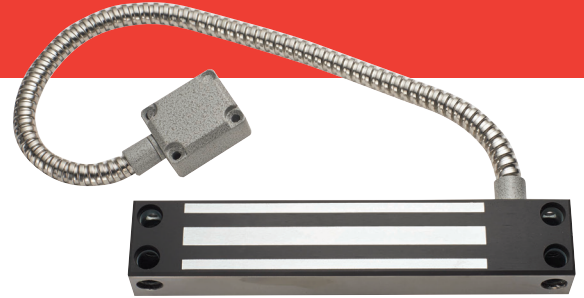
### Operating Temperature

- +14 to +131F [-10 to +55C]

# 600WP

## Weather Resistant Magnetic Gate Lock

Magnetic gate lock with 600 lbs of holding force provides weather resistant access control for perimeter applications. Ideal for sliding or swinging gates.



### Features

#### Standard Features

- 12" color coded leads in armored cable with metal end cap
- Use 23/64" diameter drill for blind nuts provided with lock
- Self-drilling TEC screws
- Non-aluminum parts are plated to resist corrosion
- Top mount or side mount with brackets (order separately)
- Completely sealed in stainless steel case
- Ideal for sliding or swinging gates
- Clear anodized (US28) finish standard
- Limited lifetime warranty

### Specifications

#### Holding Force

- 600 lbs

#### Dimensions

- Magnet size: 8-21/32" L x 1-9/32" H x 1-1/8" W
- Armature size: 7-9/32" L x 1-21/32" H x 1/2" W

#### Electrical

- Operates on 12 or 24 VDC, field configurable
- Current draw: 500 mA at 12 VDC, 250 mA at 24 VDC

#### Operating Temperature

- +14 to +131F [-10 to +55C]

# 1200S, 1200LB

## Single Magnetic Lock



Bracket mounted magnetic lock with 1200 lbs of holding force that can be easily installed without special tools and used with any access control system. Ideal for high-use areas for traffic control in interior or exterior applications. Available with LED, bond sensor and door status signalling options.

### Features

#### Standard Features

- **1200S** Standard magnetic lock
- **1200LB** Magnetic lock with indicating LED, bond sensor and door status sensor
- Built-in arc suppression
- Instant release, no hysteresis
- Self-drilling TEC screws
- Non-aluminum parts are plated to resist corrosion
- E-Z mount header bracket and template provided for easy installation, no special tools required
- Can be used with any access control system
- Clear anodized (US28) finish standard
- Limited lifetime warranty

### Options

- **DURO** Duranodic finish (US 40) available, add DURO to end of standard part number when ordering.
- Dress covers in polished chrome and brass available. See "Magnetic Lock Accessories" for options.

### Specifications

#### Certifications & Listings

- UL 294 listed
- UL 10C fire rated
- CAN/ULC-S104 fire door conformant
- ULC-S527 listed
- UL 864 listed

#### Holding Force

- 1200 lbs

#### Dimensions

- Magnet size: 10-1/2" L x 2-7/8" H x 1-1/2" W
- Armature size: 7-1/4" L x 2-3/8" H x 5/8" W

### Electrical

- 12 or 24 VDC, field selectable
- Current draw: 505 mA at 12 VDC, 260 mA at 24 VDC
- 1200LB bond sensor has SPDT 3A relay contacts

### Operating Temperature

- +14 to +131F [-10 to +55C]

# 1200D

## Double Magnetic Lock



Built to provide 1200 lbs of holding force, per door, for double door configurations, this easy to install magnetic lock includes LED status indicator, bond sensor and door status sensor to signal a powered and securely locked door. Ideal for interior or exterior applications.

## Features

### Standard Features

- Built-in arc suppression
- Instant release, no hysteresis
- Self-drilling TEC screws
- Non-aluminum parts are plated to resist corrosion
- E-Z mount header bracket and template provided for easy installation, no special tools required
- Can be used with any access control system
- Bond sensor and door status sensors plus bi-color LEDs signal a powered and securely locked door
- Clear anodized (US28) finish standard
- Limited lifetime warranty

### Options

- **DURO** Duranodic finish (US 40) available, add DURO to end of standard part number when ordering.
- Dress covers in polished chrome and brass are available. See "Magnetic Lock Accessories" for options.

## Specifications

### Certifications & Listings

- UL 294 listed
- UL 10C fire rated
- CAN/ULC-S104 fire door conformant
- ULC-S527 listed
- UL 864 listed

### Holding Force

- 1200 lbs, per magnet

### Dimensions

- Magnet size: 21" L x 2-7/8" H x 1-1/2" W
- Armature size: 7-1/2" L x 2-3/8" H x 5/8" W

### Electrical

- 12 or 24 VDC, field selectable
- Current draw, per magnet: 505 mA at 12 VDC, 260 mA at 24 VDC
- Bond sensor has SPDT 3A relay contacts, per magnet

### Operating Temperature

- +14 to +131F [-10 to +55C]

# 1200WP

## Weather Resistant Magnetic Gate Lock



Magnetic gate lock with 1200 lbs of holding force provides weather resistant access control for perimeter applications. Ideal for sliding or swinging gates.

### Features

#### Standard Features

- 0.5" ID / 0.75" OD conduit fitting pipe thread
- 10" color coded wire leads in plastic jacket
- Blind nuts provided
- Self-drilling TEC screws
- Non-aluminum parts are plated to resist corrosion
- Top mount or side mount with L brackets (order separately)
- Completely sealed in stainless steel case
- Ideal for sliding or swinging gates
- Clear anodized (US28) finish standard
- Limited lifetime warranty

### Specifications

#### Holding Force

- Up to 1200 lbs

#### Dimensions

- Magnet size: 9-1/16" L x 2-5/8" H x 1-1/16" W
- Armature size: 7-9/32" L x 2-5/8" H x 5/8" W

#### Electrical

- 12 or 24 VDC, field configurable
- Current draw: 500 mA at 12 VDC, 250 mA at 24 VDC

#### Operating Temperature

- +14 to +131F [-10 to +55C]

#### Accessories

- **AM6320** Angle Bracket for 600 and 1200 Series Magnetic Locks, 1-1/2" x 1"
- **AM6370** Three Piece Z Bracket for 1200 Series Single Magnetic Locks

# 1200DE

## Delayed Egress Magnetic Lock



Bracket mounted, single magnetic lock with 1200 lbs of holding force that can be easily installed without special tools. Designed for applications that require a locking feature that delays the opening of a door. Includes integrated key reset, digital display, and field configurable settings. Code specific models also available. For use on interior and perimeter exit, single, out-swinging doors.

## Features

### Standard Features

- Choice of English, French/English or Spanish/English voice message
- Digital countdown LED display
- Door prop alarm
- Energy savings mode
- Field configurable settings include:
  - Voice message language
  - Choice of voice and alarm tone or alarm tone only
  - Nuisance delay times 0, 1, 2, 3 seconds
  - Bypass delay times 0, 10, 15, 30 seconds
  - Door movement activation
  - Auto or manual relock
- Integrated two function keyswitch
  - Bypass (REX) and alarm reset
- Required sign included
- Clear anodized (US28) finish standard
- Limited lifetime warranty

### Options

- **1200DE-CA15S** California-required 15s exit delay
- **1200DE-CA30S** California-required 30s exit delay
- **1200DE-CH** Chicago-required 15s exit delay, 1s nuisance delay, and 0s bypass time

## Specifications

### Certifications & Listings

- UL294
- UL10C
- ULC S533

### Holding Force

- 1200 lbs

### Dimensions

- Magnet size: 10-1/2" L x 2-7/8" H x 2-3/4" W
- Armature housing size: 9-3/4" L x 3" H x 1" W

### Electrical

- Input voltage: dual voltage auto sensing 12/24 VDC
- All relay outputs: 1A @ 30 VDC
- Tamper switch rating: 5A @ 125/250 VAC
- Maximum current draw:
  - 825mA @ 12 VDC
  - 490mA @ 24 VDC
- Energy savings mode current draw:
  - 262mA @ 12VDC
  - 165mA @ 24VDC

### Operating Temperature

- +32 to +122F [0 to +50C]

# Lock N' A Box



A complete access control system in a convenient package.

## LNB-6

### Includes:

- One Model 600S UL listed magnetic lock
- One Model TS-2 UL listed request to exit station
- One Model KP-100A backlit keypad
- One 12 VDC, 700 mA UL listed plug-in power supply with leads
- Ideal for interior doors
- Limited lifetime warranty
- Available with **SREX-100** active request to exit motion sensor. Specify when ordering

Model	Description
LNB-6	600 lb Lock N' A Box
LNB-6-SREX	600 lb Lock N' A Box, includes SREX-100

## LNB-12

### Includes:

- One Model 1200S UL listed magnetic lock
- One Model TS-2 UL listed request to exit station
- One Model KP-400 weatherproof, vandal resistant backlit keypad
- One 12 VDC, 700 mA UL listed plug-in power supply with leads
- Ideal for interior or exterior doors
- Limited lifetime warranty
- Available with **SREX-100** active request to exit motion sensor. Specify when ordering.

Model	Description
LNB-12	1200 lb Lock N' A Box
LNB-12-SREX	1200 lb Lock N' A Box, includes SREX-100

# Magnetic Lock

## Comparison Chart

	320S	600S	600L	600LB	600D	600DLB	600WP
<b>Holding Force</b>	300 lbs	600 lbs	600 lbs	600 lbs	600 lbs per magnet	600 lbs per magnet	600 lbs
<b>Electrical</b>							
12 VDC Current Draw	250 mA	505 mA	505 mA	505 mA	505 mA, per magnet	505 mA, per magnet	505 mA
24 VDC Current Draw	130 mA	260 mA	260 mA	260 mA	260 mA, per magnet	260 mA, per magnet	260 mA
Selectable/Configurable 12 or 24 VDC ♦	●	●	●	●	●	●	●
♦ Refer to catalog page for additional information.							
<b>Specification</b>							
UL 10C Listed		●	●	●	●	●	
UL 294 Listed		●	●	●	●	●	
CAN4-S104 / CAN-ULC-S533 Listed		●	●	●	●	●	
ULC-S527 Listed		●	●	●	●	●	
UL 864 Listed		●	●	●			
<b>Features</b>							
Bond Sensor				●		●	
Door Status Signal				●		●	
Status LED			●	●		●	
<b>Door Application</b>							
Glass Door w/ Aluminum Frame (Light Security)	●	●	●	●	●	●	●
Wood Door (Light Security)	●	●	●	●	●	●	●
Wood Door (High Security)							
Metal Door (Light Security)	●	●	●	●	●	●	●
Metal Door (High Security)							
Herculite Door (w/out Top or Bottom Rail*)		●	●	●	●	●	
Herculite Door (w/Top or Bottom Rail*)		●	●	●	●	●	
Cabinets	●						●

● = Preferred application

\* With correct mounting accessories

# Magnetic Lock

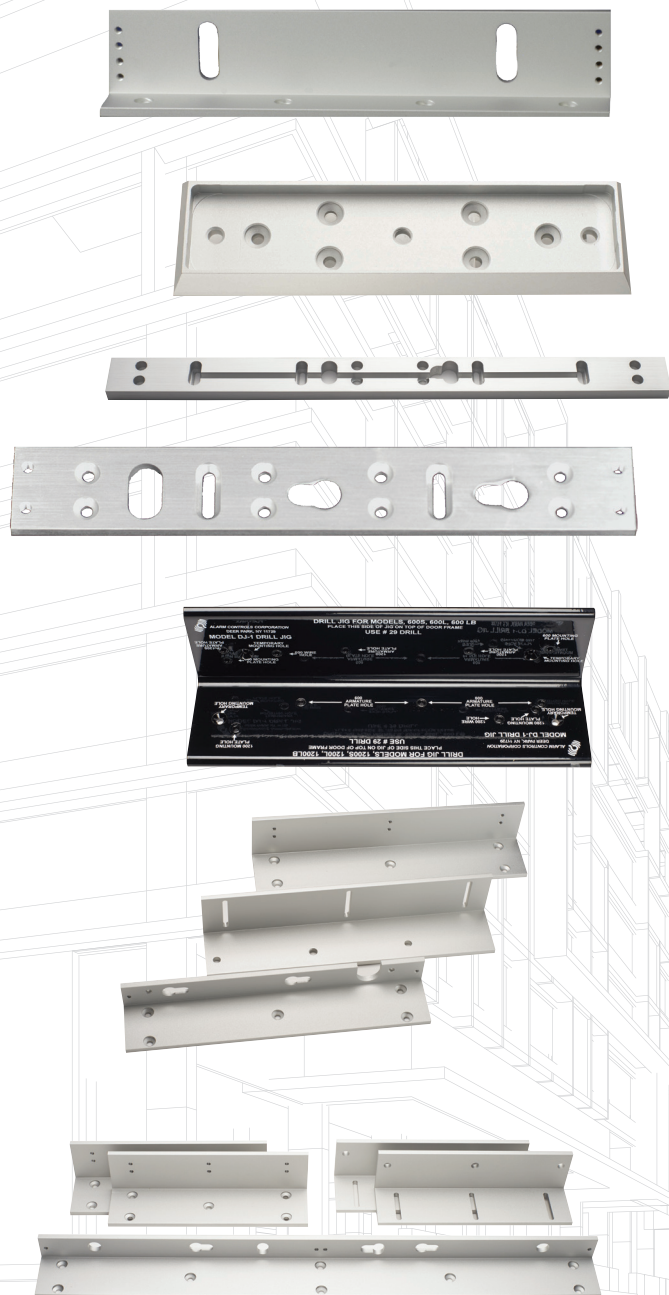
## Comparison Chart (cont.)

	1200S	1200L	1200LB	1200D	1200WP	1200DE
<b>Holding Force</b>	1200 lbs	1200 lbs	1200 lbs	1200 lbs per magnet	1200 lbs	
<b>Electrical</b>						
12 VDC Current Draw	505 mA	505 mA	505 mA	505 mA, per magnet	505 mA	825 mA
24 VDC Current Draw	260 mA	260 mA	260 mA	260 mA, per magnet	260 mA	490 mA
Selectable/Configurable 12 or 24 VDC ♦	●	●	●	●	●	●
♦ Refer to catalog page for additional information.						
<b>Specification</b>						
UL 10C Listed	●	●	●	●		●
UL 294 Listed	●	●	●	●		●
CAN4-S104 / CAN-ULC-S533 Listed	●	●	●	●		
ULC-S527 Listed	●	●	●	●		
UL 864 Listed	●	●	●	●		
<b>Features</b>						
Bond Sensor			●	●		●
Door Status Signal			●	●		●
Status LED		●	●	●		
<b>Door Application</b>						
Glass Door (w/ Aluminum Frame)						●
Wood Door (Light Security)						
Wood Door (High Security)	●	●	●	●	●	●
Metal Door (Light Security)						
Metal Door (High Security)	●	●	●	●	●	●
Herculite Door (w/out Top or Bottom Rail*)	●	●	●	●		
Herculite Door (w/Top or Bottom Rail*)	●	●	●	●		
Cabinets						

● = Preferred application

\* With correct mounting accessories

# Magnetic Lock Accessories

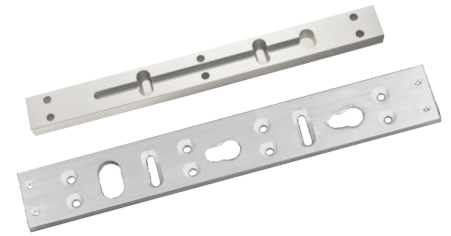


# Magnetic Lock Accessories

## Drop Down Plates for Single Locks

Spacer plates for single magnetic locks

PART NUMBER	DESCRIPTION	DIMENSIONS	FINISH
AM3300	1/2" spacer for 600 lb. lock	9-7/8"L x 1"W x 1/2"D	Clear anodized (US28)
AM3305	5/8" spacer for 600 lb. lock	9-7/8"L x 1"W x 5/8"D	Clear anodized (US28)
AM3330	1/4" spacer for 600 lb. lock	9-7/8"L x 1"W x 1/4"D	Clear anodized (US28)
AM6300	1/2" spacer for 1200 lb. lock	10-1/2"L x 1-1/2"W x 1/2"D	Clear anodized (US28)
AM6305	5/8" spacer for 1200 lb. lock	10-1/2"L x 1-1/2"W x 5/8"D	Clear anodized (US28)
AM6330	1/4" spacer for 1200 lb. lock	10-1/2"L x 1-1/2"W x 1/4"D	Clear anodized (US28)



## Drop Down Plates for Double Locks

Spacer plates for double magnetic locks

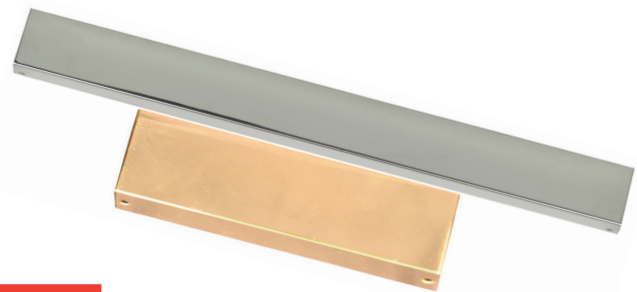
PART NUMBER	DESCRIPTION	DIMENSIONS	FINISH
AM3331	1/4" spacer for 600 lb. lock	19-3/4"L x 1"W x 1/4"D	Clear anodized (US28)
AM3332	1/2" spacer for 600 lb. lock	19-3/4"L x 1"W x 1/2"D	Clear anodized (US28)
AM6331	1/4" spacer for 1200 lb. lock	21"L x 1-1/2"W x 1/4"D	Clear anodized (US 28)
AM6332	1/2" spacer for 1200 lb. lock	21"L x 1-1/2"W x 1/2"D	Clear anodized (US 28)



## DUC Dress Covers

For 600 and 1200 lbs Magnetic Locks

- For both single and double magnetic locks
- Easy to install and retrofit existing installations
- Available with Polished Brass and Polished Chrome finishes
- Painted finishes available for all dress covers



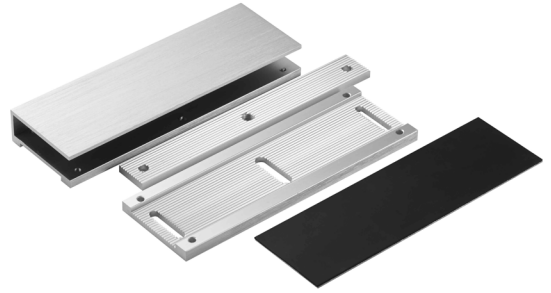
PART NUMBER	DESCRIPTION
DUC-1B/DUC-1C	600S Magnetic Lock Dress Cover, Polished Brass (B) or Chrome (C)
DUC-2B/DUC-2C	600L Magnetic Lock Dress Cover, Polished Brass (B) or Chrome (C)
DUC-3B/DUC-3C	600LB Magnetic Lock Dress Cover, Polished Brass (B) or Chrome (C)
DUC-4B/DUC-4C	600D Magnetic Lock Dress Cover, Polished Brass (B) or Chrome (C)
DUC-5B/DUC-5C	600DLB Magnetic Lock Dress Cover, Polished Brass (B) or Chrome (C)
DUC-6B/DUC-6C	1200S Magnetic Lock Dress Cover, Polished Brass (B) or Chrome (C)
DUC-7B/DUC-7C	1200L Magnetic Lock Dress Cover, Polished Brass (B) or Chrome (C)
DUC-8B/DUC-8C	1200LB Magnetic Lock Dress Cover, Polished Brass (B) or Chrome (C)
DUC-9B/DUC-9C	1200D Magnetic Lock Dress Cover, Polished Brass (B) or Chrome (C)

# Magnetic Lock Accessories

## GDH Glass Door Holder

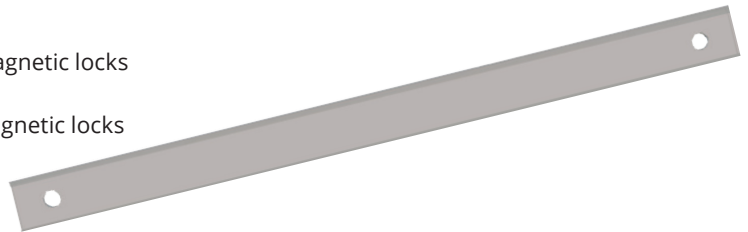
### For 600 and 1200 lbs Magnetic Locks

- Size: 7-5/16" L x 1-3/8" W x 2-1/2" H
- Glass thickness: 1/2" – 5/8"
- Minimum clearance between top of door and door header: 13/64"
- Armature adjustment range: 1"
- Compression mounts armature on frameless glass doors
- Clear anodized (US28) standard finish



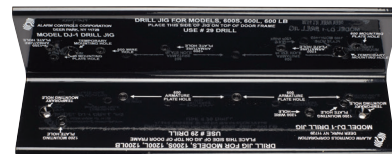
## Filler Plates

- AM6360: 5/8" filler plate for all 600 and 1200 series magnetic locks
  - Size: AM6360: 10-1/2" L x 3/4" W x 5/8" Thick
- AM6361: 1/2" filler plate for all 600 and 1200 series magnetic locks
  - Size: AM6361: 10-1/2" L x 3/4" W x 1/2" Thick
- Clear Anodized (US28) standard finish



## Installation Tools

- **DJ-1** Magnetic Lock Installation Drill Jig
  - Designed for accurate and fast installation of magnetic locks
  - Compatible with: 600S, 600LB, 1200S, 1200LB



DJ-1

## Jack Nuts

Provide a reliable and secure method for mounting magnetic locks in metal door frames that are 3/16" thick or less. During installation the body of the jack nut collapses on the back side to form legs which grip the inside of the mounting surface.

- **JN-1 Jack Nut Tool Kit**
  - Jack nut tool kit includes the following: Jack nut installation tool, 25/64" drill bit, 5M mandrel installed in installation tool, 50-5M jack nuts, 50-5M x .75" flat head Phillips machine screws, 1 each of 3M, 4M and 6M mandrel, Metal tool box (holds all items)
  - **JN-50 Pack of 50 (also available separately)**

(Grey metal box shown; actual metal box is white)



JN-1

# Magnetic Lock Accessories

## L Brackets

### Fixed Single and Double Lock Brackets; Adjustable Single Lock Mounting Brackets

- Fixed single lock L brackets for 600 or 1200 lbs magnetic locks;  
Option to include cover.
- Adjustable single lock L bracket for 600 or 1200 lbs magnetic locks
- Fixed double lock L bracket for 600 and 1200 double magnetic locks
- For Duranodic finish US40 (Dark Bronze), please contact the factory



PART NUMBER	DESCRIPTION	DIMENSIONS	FINISH
<b>Fixed Single Lock Brackets:</b>			
AM3320	1/4" L bracket for 600 Series locks	9-7/8"L x 1" x 1-1/2"	Clear anodized (US28)
AM3320C	L bracket for 600 Series single magnetic locks with cover		Clear anodized (US28)
AM6320	5/16" L bracket for 1200 Series locks with cover	10-1/2"L x 1-1/2" x 1"	Clear anodized (US28)
AM6320C	L bracket for 1200 Series single magnetic locks with cover		Clear anodized (US28)
<b>Adjustable Single Lock Brackets:</b>			
AM3325	3/16" adjustable L bracket for 600 Series locks	9-7/8"L x 1-7/8" x 1-3/16"	Clear anodized (US28)
AM6325	1/4" adjustable L bracket for 1200 Series locks	10-1/2"L x 2-5/16" x 2-5/16"	Clear anodized (US28)
<b>Fixed Double Lock Brackets:</b>			
AM3326	5/16" L bracket for 600D and 600DLB Series double locks	19-3/4"L x 1-1/2" x 1"	Clear anodized (US28)
AM6326	1/4 L bracket for 1200D Series double locks	21"L x 1" x 1-1/2"	Clear anodized (US28)



## Z Brackets

### Decorative Z Bracket with Integrated Dress Cover

- Adjustable mounting bracket for 600 or 1200 lbs Series Single Magnetic Locks
- For use on in-swinging doors
- **AM3370C** for magnetic lock models: 600S, and 600LB
  - Adjustment range: 2" - 2.75"
  - Bracket dimensions: 10"L x 3.5"H
- **AM6370C** for magnetic lock models: 1200S and 1200LB
  - Adjustment range: 2.375" - 3.5"
  - Bracket dimensions: 10.625"L x 4.25"H
- For Duranodic finish US40 (Dark Bronze), please contact the factory



PART NUMBER	DESCRIPTION	FINISH
<b>Z Bracket for 600 Series Single Magnetic Locks</b>		
AM3370	Z bracket for 600 Series single magnetic locks	Clear anodized (US28)

# Magnetic Lock Accessories

## Z Brackets

### Decorative Z Bracket with Integrated Dress Cover

PART NUMBER	DESCRIPTION	FINISH
<b>Z Bracket for 600 Series Single Magnetic Locks</b>		
AM3370C	Z bracket with integrated dress cover for 600 Series single magnetic locks	Clear anodized (US28)
<b>Z Brackets for 600 Series Double Magnetic Locks</b>		
AM3375	Z bracket for 600 Series double magnetic locks	Clear anodized (US28)
<b>Z Brackets for 1200 Series Single Magnetic Locks</b>		
AM6370	Z bracket for 1200 Series single magnetic locks	Clear anodized (US28)
AM6370C	Z bracket with integrated dress cover for 1200 Series single magnetic locks	Clear anodized (US28)
<b>Z Brackets for 1200 Series Double Magnetic Locks</b>		
AM6375	Z bracket for 1200 Series double magnetic locks	Clear anodized (US28)



## Armature and Mounting Plates

PART NUMBER	DESCRIPTION	DIMENSIONS	FINISH
<b>Armature housing for use on freezer and extra thick doors:</b>			
AM3310	Armature housing for 600 Series	7-7/8"L x 2-1/8"W x 5/8"D	Clear anodized (US28)
AM6310	Armature housing for 1200 Series	8-1/4"L x 3"W x 5/8"D	Clear anodized (US28)
<b>Armature plate for 600 and 1200 Series Magnetic Plates:</b>			
AM3335	Armature plate for 600 Series	7-1/4"L x 1-7/16"W x 9/16"D	Clear anodized (US28)
AM6335A	Armature plate for 1200LB, 1200D	7-1/2"L x 2-5/16"W x 5/8"D	Clear anodized (US28)
<b>Offset armature plate for 600 and 1200 Series Magnetic Plates:</b>			
AM6338	Offset armature for 1200 Series	7-1/2"L x 2-5/16"W x 5/8"D	Clear anodized (US28)
<b>Armature Spacer for 600 and 1200 Series:</b>			
AM3315	1/4" armature spacer for 600 and 1200 Series magnetic locks. Supplied with armature plate mounting hardware. Can be used to mount plate on thick doors	19-3/4"L x 1-1/2" x 1"	Clear anodized (US28)



# Cross Reference Guide



**MODEL 320S**  
300 lbs Single Lock  
Ideal for cabinets  
and showcases



**MODEL 600S**  
600 lbs Single Lock  
Recommended for  
interior doors



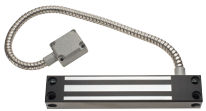
**MODEL 600LB**  
600 lbs Single Lock with  
Bond Sensor, Door Status  
Sensor and LED  
Recommended for  
interior doors



**MODEL 600D**  
600 lbs Double Lock  
Recommended for  
interior doors

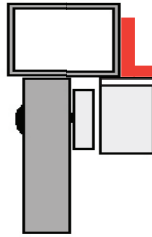


**MODEL 600DLB**  
600 lbs Double Lock  
with Bond Sensor,  
Door Status Sensor  
and LED  
Recommended for  
interior doors



**MODEL 600WP**  
600 lbs Weatherproof  
Gate Lock  
Recommended for  
exterior gates

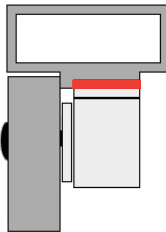
## 300 and 600 Series Maglocks



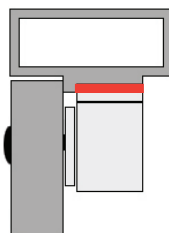
L-Brackets				
	AM3320	AM3320C	AM3325	AM3326
320S				
600S	●	●	●	
600D				●
600DLB				●
600L	●	●	●	
600WP				



Z-Brackets			
	AM3370	AM3370C	AM3375
320S			
600S	●	●	
600D			●
600DLB			●
600L	●	●	
600WP	●		



Drop Down Plates for Single Locks			
	AM3300	AM3305	AM3330
	1/2"	5/8"	1/4"
320S			
600S	●	●	●
600L	●	●	●
600LB	●	●	●
600WP			



Drop Down Plates for Double Locks		
	AM3331	AM3332
	1/4"	1/2"
600D	●	●
600DLB	●	●

# Cross Reference Guide (cont.)



## MODEL 1200S

1200 lbs Single Lock  
Recommended for  
exterior doors



## MODEL 1200LB

1200 lbs Single Lock with  
Bond Sensor, Door Status  
Sensor and LED  
Recommended for  
exterior doors



## MODEL 1200D

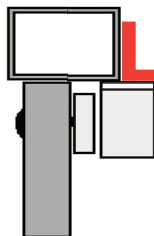
1200 lbs Double Lock with  
Bond Sensor, Door Status  
Sensor and LED  
Recommended for  
exterior doors



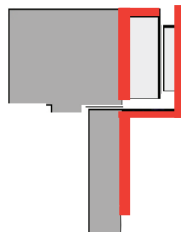
## MODEL 1200WP

1200 lbs Weatherproof  
Gate Lock  
Recommended for  
exterior gates

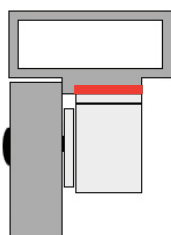
## 1200 Series Maglocks



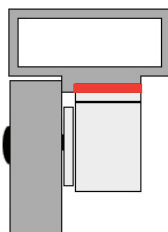
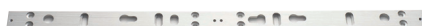
L-Brackets				
	AM6320	AM6320C	AM6325	AM3326
1200S	●	●	●	
1200D				
1200DLB	●	●	●	●
1200L	●	●	●	●
1200WP	●			



Z-Brackets			
	AM6370	AM6370C	AM6375
1200S	●	●	
1200D			●
1200DLB			●
1200L	●	●	
1200WP	●		



Drop Down Plates for Single Locks			
	AM6300	AM6305	AM6330
	1/2"	5/8"	1/4"
1200S	●	●	●
1200L	●	●	●
1200LB	●	●	●
1200WP			



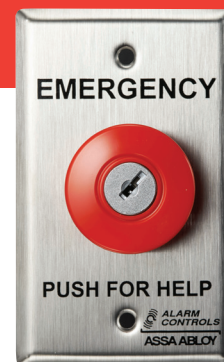
Drop Down Plates for Double Locks		
	AM6331	AM6332
	1/2"	5/8"
1200D	●	●

# Push Buttons & Egress Devices



# KR Series

## Latching Panic Stations with Key Reset



Single gang panic station with latching key reset. Once activated the push button automatically latches, requiring the use of a key to reset. Ideal for applications requiring a personal response to an alarm condition. Choice of contact configurations ensures compatibility with most systems.

### Features

#### Standard Features

- Single gang stainless steel wall plate, weather resistant to IP40 standards
- 1-1/2" red mushroom button
- Plate screened "EMERGENCY PUSH FOR HELP" to quickly call for assistance
- Alternate action switch

#### Options

- Plates: multiple finishes and widths available, specify when ordering
- **KR-1KEY** Replacement key

### Specifications

#### Certifications & Listings

- Conforms to IP40

#### Electrical

- Available in any combination of N/O and/or N/C contact pairs. See table below.
- Contacts rated 10A at 35 VDC or 120 VAC
- Switch connection via screw terminals
- Switch depth behind plate: 2"

#### Operating Temperature

- -13F to +158 F (-25 to 70 C)

### How To Order

MODEL	CONTACTS	PLATE	GUARD RING
<b>KR</b>	<b>1</b>	<b>4</b>	<b>GR</b>
KR Latching Key Reset	1 - One N/O pair and one N/C pair	1 - 302 Stainless Steel	GR Guard Ring
	2 - 2 N/O pairs	2 - White	LUC Lift Up Cover
	3 - 2 N/C pairs	3 - Ivory	(blank) NONE
	4 - 1 N/C pair	4 - Red	
	5 - 1 N/O pair	5 - 1-3/4" Stainless	
		6 - 1-3/4" Red	

# TS-32

## Latching Panic Stations

Single gang panic station with latching push button switch that remains active or inactive until actuated again.



TS-32

### Features

#### Standard Features

- Single gang stainless steel wall plate, weather resistant to IP65 standards
- 1-1/2" red mushroom button
- Plate screened "PUSH FOR EMERGENCY DOOR RELEASE"
- Alternate action switch

#### Options

- **TS-32B** Black mushroom button
- **TS-32G** Green mushroom button

### Specifications

#### Certifications & Listings

- UL and CSA certified components
- Conforms to IP65

#### Electrical

- One N/O and one N/C latching contacts
- Contacts rated 10A at 35 VDC or 120 VAC
- Switch connection via screw terminals
- Switch depth behind plate: 2"

#### Operating Temperature

- -13F to +158 F (-25 to 70 C)

# PBL Series

## Latching Panic Stations



Single gang panic station with latching push button switch that remains active or inactive until actuated again. Choice of contact configurations ensures compatibility with most systems.

### Features

#### Standard Features

- Single gang stainless steel wall plate, weather resistant to IP65 standards
- 1-1/2" red mushroom button
- Plate screened "EMERGENCY PUSH FOR HELP" to quickly call for assistance
- Alternate action switch

#### Options

- Plate: multiple finishes and widths available, specify when ordering
- Illumination: long life LED in 6V, 12V, 24V, 120V, specify when ordering
- **GR** Guard Ring
- **LUC** Lift up cover

### Specifications

#### Certifications & Listings

- Conforms to IP65

#### Electrical

- Available in any combination of N/O and/or N/C contact pairs. See table below.
- Contacts rated 10A at 5 VDC or 120 VAC
- Switch connection via screw terminals
- Switch depth behind plate: 2-1/2"

#### Operating Temperature

- -13F to +158F (-25 to 70 C)

### How To Order

MODEL	CONTACTS	PLATE	ILLUMINATION	GUARD RING
<b>PBL</b>	<b>1</b>	<b>4</b>	<b>L2</b>	<b>GR</b>
<b>PBL</b> Latching Operator	<b>1</b> - One N/O pair and one N/C pair	<b>1</b> - 302 Stainless Steel	<b>L1</b> - 6VDC	<b>GR</b> Guard Ring
	<b>2</b> - 2 N/O pairs	<b>2</b> - White	<b>L2</b> - 12VDC	<b>LUC</b> Lift Up Cover
	<b>3</b> - 2 N/C pairs	<b>3</b> - Ivory	<b>L3</b> - 24VDC	<b>(blank)</b> NONE
	<b>4</b> - 1 N/C pair	<b>4</b> - Red	<b>L4</b> - 120VAC	
	<b>5</b> - 1 N/O pair	<b>5</b> - 1-3/4" Stainless		
		<b>6</b> - 1-3/4" Red		

# PBM Series

## Momentary Panic Stations

Single gang panic station with momentary push button switch that remains active as long as it's depressed. Choice of contact configurations ensures compatibility with most systems



### Features

#### Standard Features

- Single gang stainless steel wall plate, weather resistant to IP65 standards
- 1-1/2" red mushroom button
- Plate screened "EMERGENCY PUSH FOR HELP" to quickly call for assistance
- Momentary action switch

### Options

- Plate: multiple plate finishes and widths available, specify when ordering
- Illumination: long life LED in 6V, 12V, 24V, 120V, specify when ordering
- **GR** Guard Ring
- **LUC** Lift up cover

### Specifications

#### Certifications & Listings

- Conforms to IP65

#### Electrical

- Available in any combination of N/O and/or N/C contact pairs. See table below.
- Contacts rated 10A at 35 VDC or 120 VAC
- Switch connection via screw terminals
- Switch depth behind plate: 2-1/2"

#### Operating Temperature

- -13F to +158 F (-25 to 70 C)

### How To Order

MODEL	CONTACTS	PLATE	ILLUMINATION	GUARD RING
<b>PBM</b>	<b>1</b>	<b>4</b>	<b>L2</b>	<b>GR</b>
<b>PBM</b> Momentary Operator	1 - One N/O pair and one N/C pair	1 - 302 Stainless Steel	L1 - 6VDC	GR Guard Ring
	2 - 2 N/O pairs	2 - White	L2 - 12VDC	LUC Lift Up Cover
	3 - 2 N/C pairs	3 - Ivory	L3 - 24VDC	(blank) NONE
	4 - 1 N/C pair	4 - Red	L4 - 120VAC	
	5 - 1 N/O pair	5 - 1-3/4" Stainless		
		6 - 1-3/4" Red		

# EB Series

## Request to Exit Egress Stations



Single gang request to exit egress station with momentary push button switch that remains active as long as button is depressed. Choice of contact configurations ensures compatibility with most systems.

### Features

#### Standard Features

- Single gang stainless steel wall plate
- 1-1/2" red mushroom button
- Plate screened "EXIT"
- Momentary action switch

#### Options

- Plate: multiple finishes and widths available, specify when ordering
- Illumination: long life LED in 6V, 12V, 24V, 120V, specify when ordering
- **GR** Guard Ring
- **LUC** Lift up cover

### Specifications

#### Certifications & Listings

- UL and CSA certified components

#### Electrical

- Available in any combination of N/O and/or N/C contact pairs. See table below.
- Contacts rated 10A at 35 VDC or 120 VAC
- Switch connection via screw terminals
- Switch depth behind plate: 2-1/2"

#### Operating Temperature

- -13F to +158F

### How To Order

MODEL	CONTACTS	PLATE	ILLUMINATION	GUARD RING
<b>EB</b>	<b>1</b>	<b>4</b>	<b>L2</b>	<b>GR</b>
<b>EB</b> Momentary Operator	<b>1</b> - One N/O pair and one N/C pair	<b>1</b> - 302 Stainless Steel	<b>L1</b> - 6VDC	<b>GR</b> Guard Ring
	<b>2</b> - 2 N/O pairs	<b>2</b> - White	<b>L2</b> - 12VDC	<b>LUC</b> Lift Up Cover
	<b>3</b> - 2 N/C pairs	<b>3</b> - Ivory	<b>L3</b> - 24VDC	<b>(blank)</b> NONE
	<b>4</b> - 1 N/C pair	<b>4</b> - Red	<b>L4</b> - 120VAC	
	<b>5</b> - 1 N/O pair	<b>5</b> - 1-3/4" Stainless		
		<b>6</b> - 1-3/4" Red		

# TS-1

## Request to Exit Station

The TS-1 single gang request to exit station with push button and LEDs provides a convenient way to monitor the lock station. LED status indicators provide an at-a-glance visual of system status.



TS-1

### Features

#### Standard Features

- Switch mounted on single gang wall plate with 430 stainless steel finish
- Large 1-1/2" green mushroom button
- Plate labeled "PUSH TO EXIT" for easy to follow egress instructions
- 1/4" red and green LED status indicators; illuminated with hi-brightness LED
- Momentary action switch

### Options

- **TS-1L** with alternate action switch
- **TS-1R** with red mushroom push button
- Finishes: multiple plate finishes available
- Other contact combinations available as custom part

### Specifications

#### Certifications & Listings

- UL 294 listed
- CSA Certified components

#### Electrical

- One N/O and N/C contact
- Contacts rated 10A at 35 VDC or 120 VAC
- Switch connection via screw terminals
- Switch depth behind plate: 2-1/2"
- LEDs operates on 12 or 24 VAC/VDC, independently wired

#### Operating Temperature

- -13F to +158 F (-25 to 70 C)

# TS-2

## Request to Exit Station

The TS-2 request to exit station, with square push button, provides a convenient way to add authorized access control to a variety of applications.



TS-2

## Features

### Standard Features

- Switch mounted on single gang wall plate with 430 stainless steel finish
- 2" green square push button; Illuminated with hi-brightness LED
- Button labeled "PUSH TO EXIT" for easy to follow egress instructions
- Momentary SPDT action switch

## Options

- **TS-2-2** with momentary DPDT output
- **TS-2R** with red push button
- **TS-2ENTER** button labeled "PUSH TO ENTER"
- **TS-2BLANK** button left blank
- **856LEDSM** Replacement LED (5 pack)
- Finishes: multiple plate options available
- Custom legends available as custom part

## Specifications

### Certifications & Listings

- UL 294 listed

### Electrical

- SPDT contacts, rated 10A at 35 VDC or 120 VAC
- Switch depth behind plate: 1-1/2"
- Switch terminated with 10" colored leads
- LED operates on 12 or 24 VAC/VDC

# TS-2T

## Request to Exit Station with Electronic Timer

The TS-2T request to exit station with electronic timer and square push button, provides convenient way to keep the door unlocked for a specified amount of time, allowing for easy entry or egress. The door will relock when the relay time has expired.



TS-2T

### Features

#### Standard Features

- Switch mounted on single gang wall plate with 430 stainless steel finish
- 2" green square push button; illuminated with hi-brightness LED
- Button labeled: "PUSH TO EXIT" for easy to follow egress instructions
- Momentary SPDT timed output
- Timer delay is adjustable 2 to 45 seconds

### Options

- **TS-2TD** with DPDT dual timed output
- **TS-2-2T** with two SPDT outputs (one set of momentary, one set of timed contacts)
- **TS-2TRED** with red push button
- **TS-2TENTER** button labeled "PUSH TO ENTER"
- **TS-2TBLANK** button left blank
- **856LEDSM** Replacement LED (5 pack)
- Custom legends available as custom part
- Finishes: multiple plate options available

### Specifications

#### Certifications & Listings

- UL 294 listed

#### Electrical

- SPDT timed contacts, rated 2A at 35 VDC
- Switch depth behind plate: 2-1/2"
- LED operates on 12 or 24 VAC/VDC

# TS-3

## Request to Exit Station

The TS-3 request to exit station with push button and single LED, provides a convenient way to add authorized access control for a variety of applications. LED status indicator offers an at-a-glance visual of system status.



TS-3

### Features

#### Standard Features

- Switch mounted on single gang wall plate with 430 stainless steel finish
- 2" green square push button; illuminated with hi-brightness LED
- Button labeled: "PUSH TO EXIT" for easy to follow egress instructions
- 1/2" bright red LED status indicator
- Momentary SPDT action switch

#### Options

- **TS-3-2** with momentary DPDT output
- **TS-3ENTER** button labeled "PUSH TO ENTER"
- **TS-3BLANK** button left blank
- Finishes: multiple plate options available
- Custom legends available as custom part

### Specifications

#### Certifications & Listings

- UL 294 listed

#### Electrical

- SPDT contacts, rated 10A at 35 VDC or 120 VAC
- Switch depth behind plate: 1-1/2"
- Switch terminated with 10" colored leads
- LED operates on 12 or 24 VAC/VDC

# TS-3T

## Request to Exit Station with Electronic Timer

The TS-3T request to exit station with electronic timer and square push button, provides a convenient way to keep the door unlocked for a specified amount of time, allowing for easy entry or egress. The door will relock when the relay time has expired. LED status indicator offers an at-a-glance visual of system status.



TS-3T

### Features

#### Standard Features

- Switch mounted on single gang wall plate with 430 stainless steel finish
- 2" green square push button; illuminated with hi-brightness LED
- Button labeled: "PUSH TO EXIT" for easy to follow egress instructions
- 1/2" illuminated red LED status indicator
- Momentary SPDT timed output
- Electronic timer is adjustable 2 to 45 seconds

#### Options

- **TS-3TD** with DPDT dual timed output
- **TS-3-2T** with two SPDT outputs (one set of momentary, one set of timed contacts)
- Finishes: multiple plate options available
- Custom legends available as custom part

### Specifications

#### Certifications & Listings

- UL 294 listed

#### Electrical

- SPDT timed contacts, rated 2A at 35 VDC
- Switch depth behind plate: 2-1/2"
- Switch terminated with 10" colored leads
- LED operates on 12 or 24 VAC/VDC

# TS-4

## Request to Exit Station

The TS-4 request to exit station, with square push button, provides a convenient way to add authorized access control to a variety of applications. Blue push button is labeled with ADA symbol to indicate accessibility compliance.



TS-4

### Features

#### Standard Features

- Switch mounted on single gang wall plate with 430 stainless steel finish
- 2" blue square push button; Illuminated with hi-brightness LED
- Button labeled with ADA symbol
- Momentary SPDT action switch

### Options

- **TS-4-2** with momentary DPDT output
- Finishes: multiple plate options available

### Specifications

#### Certifications & Listings

- UL 294 listed

#### Electrical

- SPDT contacts, rated 10A at 35 VDC or 120 VAC
- Switch depth behind plate: 1-1/2"
- Switch terminated with 10" colored leads
- LED operates on 12 or 24 VAC/VDC

# TS-4T

## Request to Exit Station with Electronic Timer

The TS-4T request to exit station with electronic timer and square push button, provides a convenient way to keep the door unlocked for a specified amount of time, allowing for easy entry or egress. The door will relock when the relay time has expired. Blue push button is labeled with ADA symbol to indicate accessibility compliance.



TS-4T

## Features

### Standard Features

- Switch mounted on single gang wall plate with 430 stainless steel finish
- 2" blue square push button; illuminated with hi-brightness LED
- Button labeled with ADA symbol
- Momentary SPDT timed output
- Electronic timer is adjustable 2 to 44 seconds

### Options

- **TS-4TD** with DPDT with dual timed output
- **TS-4-2T** with two SPDT outputs (one set of momentary, one set of timed contacts)
- Custom plate finishes available as custom part

## Specifications

### Certifications & Listings

- UL 294 listed

### Electrical

- SPDT timed contacts, rated 2A at 35 VDC
- Switch depth behind plate: 2-1/2"
- Switch terminated with 10" colored leads
- LED operates on 12 or 24 VAC/VDC

# TS-5

## Request to Exit Station

The TS-5 request to exit station, with push button and single LED, provides a convenient way to add authorized access control for a variety of applications. Blue push button is labeled with ADA symbol to indicate accessibility compliance. LED status indicator offers an at-a-glance visual of system status.



TS-5

### Features

#### Standard Features

- Switch mounted on single gang wall plate with 430 stainless steel finish
- 2" blue square push button; illuminated with hi-brightness LED
- Button labeled with ADA symbol
- 1/2" bright red LED status indicator
- Momentary SPDT action switch

#### Options

- **TS-5-2** with momentary DPDT output
- Finishes: multiple plate options available

### Specifications

#### Certifications & Listings

- UL 294 listed

#### Electrical

- SPDT timed contacts, rated 10A at 35 VDC or 120 VAC
- Switch depth behind plate: 1-1/2"
- Switch terminated with 10" colored leads
- LED operates on 12 or 24 VAC/VDC

# TS-5T Series

## Request to Exit Station with Electronic Timer

The TS-5T request to exit station with electronic timer, square push button and single LED, provides a convenient way to keep the door unlocked for a specified amount of time, allowing easy entry or egress. The door will relock when the relay time has expired. Blue push button is labeled with ADA symbol to indicate accessibility compliance. LED status indicator offers an at-a-glance visual of system status.



TS-5T

## Features

### Standard Features

- Switch mounted on single gang wall plate with 430 stainless steel finish
- 2" blue square push button; illuminated with hi-brightness LED
- Button labeled with ADA symbol
- 1/2" red LED status indicator
- Momentary SPDT timed output
- Electronic timer is adjustable 2 to 44 seconds

## Options

- **TS-5TD** with DPDT dual timed output
- **TS-5-2T** two SPDT outputs (one set of momentary, one set of timed contacts)
- Custom plate finishes available as custom part

## Specifications

### Certifications & Listings

- UL 294 listed

### Electrical

- SPDT timed contacts, rated 2A at 35 VDC
- Switch depth behind plate: 2-1/2"
- Switch terminated with 10" colored leads
- LED operates on 12 or 24 VAC/VDC

# TS-6, TS-8

## Request to Exit Stations with LEDs

The single gang TS-6 and narrow stile TS-8 request to exit stations, with rectangular push button and LED status indicators, provide a convenient way to add authorized access control for a variety of applications. Red and green LED offer an at-a-glance visual indication of system status. TS-6 and TS-8 are available with timer relay for applications that require door to remain unlocked for a specified time.



TS-6

TS-8

## Features

### Standard Features

- **TS-6** switch mounted on single gang wall plate with 430 stainless steel finish
- **TS-8** switch mounted on narrow 1-3/4" wall plate with 302 stainless steel finish
- 5/8" x 7/8" green rectangular push button; illuminated with hi-brightness LED
- Button labeled "PUSH TO EXIT" for easy to follow egress instructions
- 1/4" red and green LED status indicators
- Momentary DPDT action switch

### Options

- **TS-6L, TS-8L** with latching DPDT action switch
- **TS-6T, TS-8T** with timed output
  - Timer is adjustable 2 to 45 seconds
- Finishes: multiple plate options available
- Custom legends available as custom part
- Field selectable fail safe or fail secure

## Specifications

### Certifications & Listings

- UL 294 listed

### Electrical

- DPDT contacts, rated 3A at 35 VDC or 120 VAC
- Timed output is SPDT contacts, rated 2A at 35 VDC
- Switch depth behind plate: 1-1/4"
- Switch terminated with 12" colored leads
- Plate LEDs operate on 12 or 24 VDC
- Button LED is 12 VDC; use included resistor for 24 VDC

### Operating Temperature

- -13F to +158 F (-25 to 70 C)

# TS-7, TS-9

## Request to Exit Station

The single gang TS-7 and narrow stile TS-9 request to exit stations with rectangular push button, provide a convenient way to add authorized access control for a variety of applications. TS-7 and TS-9 are available with timer relay for applications that require door to remain unlocked for a specified time.



TS-7

TS-9

## Features

### Standard Features

- **TS-7** switch mounted on single gang wall plate with 430 stainless steel finish
- **TS-9** switch mounted on narrow 1-3/4" wall plate with 302 stainless steel finish
- 5/8" x 7/8" green rectangular push button; illuminated with hi-brightness LED
- Button labeled "PUSH TO EXIT" for easy to follow egress instructions
- Momentary DPDT action switch

### Options

- **TS-7L, TS-9L** with latching DPDT action switch
- **TS-7T, TS-9T** with timed output
  - Timer is adjustable 2 to 45 seconds
- Finishes: multiple plate options available
- Custom legends available as custom part
- Field selectable fail safe or fail secure

## Specifications

### Certifications & Listings

- UL 294 listed

### Electrical

- DPDT contacts, rated 3A at 35 VDC or 120 VAC
- Timed output is SPDT contacts rated 2A at 35VDC
- Switch depth behind plate: 1-1/4"
- Switch terminated with 12" colored leads
- Button LED is 12 VDC; use included resistor for 24 VDC

### Operating Temperature

- -13F to +158 F (-25 to 70 C)

# TS-21

## Request to Exit Station

The TS-21 request to exit station with push button, provides a convenient way to add authorized access control for a variety of applications. Extra-large 2-1/2" mushroom push button offers a large target for easy entry or egress and is available in multiple colors.



TS-21R

TS-21G

TS-21B

### Features

#### Standard Features

- Switch mounted on single gang wall plate with 430 stainless steel finish
- Extra large 2-1/2" mushroom push button
- Plate labeled "PUSH TO EXIT" for easy to follow egress instructions
- Momentary action switch

#### Options

- **TS-21B** with black mushroom button
- **TS-21G** with green mushroom button
- **TS-21R** with red mushroom button
- Finishes: multiple plate finishes available
- Custom screening available

### Specifications

#### Electrical

- One N/O and N/C contact, rated 10A at 35 VDC or 120 VAC
- Switch depth behind plate: 2"
- Switch connection via screw terminals

#### Operating Temperature

- -13F to +158 F (-25 to 70 C)

# TS-27

## Request to Exit Station

The narrow stile TS-27 request to exit station with push button, provides a convenient way to add authorized access control for a variety of applications. TS-27 is available with timer relay option for applications that require door to remain unlocked for a specified time.



TS-27

### Features

#### Standard Features

- Large 1-1/2" mushroom button
- Switch mounted on narrow stile wall plate with 302 stainless steel finish
- Plate screened "PUSH TO EXIT" for easy to follow egress instructions
- Momentary action switch

#### Options

- **TS-27B** with black mushroom push button
- **TS-27R** with red mushroom push button
- **TS-27T** with timed output
  - Timer is adjustable 2 to 45 seconds
- Finishes: multiple plate finishes available
- Custom screening available

### Specifications

#### Certifications & Listings

- UL 294 listed
- CSA Certified

#### Electrical

- One N/O and N/C contact, rated 10A at 35 VDC or 120 VAC
- Switch connection via screw terminals
- Switch depth behind plate: 2-1/2"

#### Operating Temperature

- -13F to +158 F (-25 to 70 C)

# TS-36

## Request to Exit Station

The TS-36 request to exit station, with push button, provides a convenient way to add authorized access control for a variety of applications. Momentary push button switch remains active as long as it's depressed.



### Features

#### Standard Features

- Switch mounted on single gang wall plate with 430 stainless steel finish
- Large 1-1/2" red mushroom button
- Button engraved "EXIT" with white fill
- Momentary action switch

### Options

- **TS-36302** mounted on weather resistant plate with 302 stainless steel finish

### Specifications

#### Certifications & Listings

- UL 294 listed components

#### Electrical

- One N/O and N/C contact
- Contacts rated 10A at 35 VDC or 120 VAC

# TS-50

## Request to Exit Station



TS-50

The TS-50 request to exit station with push button, provides a convenient way to add authorized access control for a variety of applications. Extra large 2-1/2" mushroom push button offers a large target for easy entry or egress and is available in multiple colors.

### Features

#### Standard Features

- Switch mounted on double gang wall plate with 402 stainless steel finish
- Extra large 2-1/2" red mushroom button
- Plate labeled "PUSH TO EXIT" for easy to follow egress instructions
- Momentary action switch

#### Options

- **TS-50B** with black mushroom button
- **TS-50G** with green mushroom button
- Finishes: multiple plate finishes available
- Custom screening available

### Specifications

#### Electrical

- One N/O and N/C contact, rated 10A at 35 VDC or 120 VAC
- Switch connection via screw terminals
- Switch depth behind plate: 2"

#### Operating Temperature

- -13F to +158 F (-25 to 70 C)

# TS-14

## Request to Exit Station with Pneumatic Timer

The TS-14 request to exit station with pneumatic timer and push button, provides a convenient way to keep the door unlocked for a specified amount of time, allowing for easy entry or egress. The door will relock when the relay time has expired.



TS-14

TS-14NR

### Features

#### Standard Features

- Switch mounted on single gang wall plate with 430 stainless steel finish
- 1-1/2" green mushroom push button
- Plate screened "PUSH TO EXIT" for easy to follow egress instructions
- Pneumatic timer is adjustable 2 to 60 seconds
- Does not require external power for operation

#### Options

- **TS-14R** with red mushroom push button
- **TS-14N** with switch mounted on narrow 1-3/4" wall plate with 302 stainless steel finish
- **TS-14NR** mounted on narrow wall plate with red push button
- **TS-14302** mounted on weather resistant plate with 302 stainless steel finish
- Finishes: multiple plate finishes available
- Custom screening available

### Specifications

#### Electrical

- One N/O and one N/C contact pair
- Contacts rated 10A at 125/250 VAC
- Switch depth behind plate: 2-1/4"
- Switch time repeatable +/- 10%
- Switch terminated with 10" colored leads

#### Operating Temperature

- +15 to 120F (-9 to 49C)

# TS-15, TS-16

## Request to Exit Station with Pneumatic Timer

The narrow stile TS-15 and single gang TS-16 request to exit stations with pneumatic push button timer, provide a convenient way to keep the door unlocked for a specified amount of time, allowing easy entry or egress. The door will relock when the relay time has expired.



TS-15

TS-16

## Features

### Standard Features

- **TS-15** switch mounted on narrow 1-3/4" wall plate with 302 stainless steel finish
- **TS-16** switch mounted on single gang wall plate with 430 stainless steel finish
- 1/4" push button with guard ring
- Plate screened "PUSH TO EXIT" for easy to follow egress instructions
- Pneumatic timer is adjustable 2 to 60 seconds
- Does not require external power for operation
- Timer life: up to 1 million operations

### Options

- **TS-16302** mounted on weather resistant plate with 302 stainless steel finish
- Custom screening available

## Specifications

### Certifications & Listings

- UL 294 listed

### Electrical

- Two sets of contacts, one N/O and one N/C, isolated
- Contacts rated 10A at 125/250 VAC
- Switch depth behind plate: 1-1/4"
- Switch time repeatable +/- 10%
- Switch terminated with 10" colored leads

### Operating Temperature

- +15 to 120 F (-9 to 49C)

# TS-21RPN

## Request to Exit Station with Pneumatic Timer

The TS-21RPN request to exit station with pneumatic timer and push button, provides a convenient way to keep the door unlocked for a specified amount of time, allowing easy entry or egress. The door will relock when the relay time has expired. Extra large 2-1/2" button offers a large target for easy entry or egress and is available in multiple colors.



TS-21RPN



TS-21GPN

## Features

### Standard Features

- Switch mounted on single gang wall plate with 430 stainless steel finish
- 2-1/2" extra large red mushroom push button
- Plate screened "PUSH TO EXIT" for easy to follow egress instructions
- Pneumatic timer is adjustable 2 to 60 seconds

### Options

- **TS-21GPN** with extra large green mushroom push button
- Finishes: multiple plate finishes available
- Custom screening available

## Specifications

### Electrical

- One N/O and one N/C contact
- Contacts rated 10A at 120 VDC
- Switch depth behind plate: 2-1/4"
- Switch time repeatable +/- 10%
- Switch terminated with 10" colored leads

### Operating Temperature

- +15 to 120F (-9 to 49C)

# TS-60

## Request to Exit Station with Pneumatic Timer



The TS-60 request to exit station with pneumatic timer and push button, provides a convenient way to keep the door unlocked for a specified amount of time, the door will relock when the relay time has expired. Extra large 2-1/2" red mushroom push button offers a large target for easy entry or egress.

### Features

#### Standard Features

- Switch mounted on single gang wall plate with 430 stainless steel finish
- 2-1/2" extra large red mushroom push button
- Button engraved "PUSH TO EXIT" in white for easy to follow egress instructions
- Pneumatic timer is adjustable 2 to 60 seconds

#### Options

- **TS-60302** mounted on weather resistant plate with 302 stainless steel finish

### Specifications

#### Electrical

- One N/O contact and one N/C contact
- Contacts rated 10A at 120 VDC
- Switch depth behind plate: 2-1/4"
- Switch time repeatable +/- 10%

#### Operating Temperature

- +15 to 120F (-9 to 49C)

# TS-10, TS-11

## Vandal Resistant Request to Exit Station

The single gang TS-10 and narrow stile TS-11 request to exit stations, with vandal resistant push button and LED status indicators, provide an effective means of locking an exit door while still providing egress during an emergency. Red and green LEDs offer an at-a-glance visual indication of system status. Vandal resistant push buttons are designed for indoor, outdoor, commercial and industrial applications. Both models are available with timer relay for applications that require door to remain unlocked for a specified time.



TS-10

TS-11

### Features

#### Standard Features

- **TS-10** switch mounted on single gang wall plate with 430 stainless steel finish
- **TS-11** switch mounted on narrow 1-3/4" wall plate with 302 stainless steel finish
- Vandal resistant 3/4" push button
- Plate is screened "PUSH TO EXIT" for easy to follow access instructions
- Red and green LED status indicators
- Momentary action switch

### Options

- **TS-10T, TS-11T** with timer for timed access
- **TS-10302** with weatherproof plate to meet IP65 standards
- Custom screening available

### Specifications

#### Certifications & Listings

- UL 294 listed
- CSA certified components
- IP65 *TS-10302 model only*

#### Electrical

- DPDT contacts rated 10A at 35 VDC
- Switch depth behind plate: 1-1/2"
- Switch terminated with 12" leads
- Red & green LEDs operate on 12 or 24 VDC

# TS-12, TS-13

## Vandal Resistant Request to Exit Station

The single gang TS-12 and narrow stile TS-13 request to exit stations, with vandal resistant push button, provide an effective means of locking an exit door while still providing egress during an emergency. Vandal resistant push buttons are designed for indoor, outdoor, commercial and industrial applications. Both models are available with timer relay for applications that require door to remain unlocked for a specified time.



TS-12

TS-13

### Features

#### Standard Features

- **TS-12** switch mounted on single gang wall plate with 430 stainless steel finish
- **TS-13** switch mounted on narrow 1-3/4" wall plate with 302 stainless steel finish
- Vandal resistant 3/4" push button
- Plate is screened "PUSH TO EXIT" for easy to follow access instructions
- Momentary action switch

### Options

- **TS-12T, TS-13T** with timer for timed access
- **TS-12302** with weatherproof plate to meet IP65 standards
- **TS-12T302** mounted on weather resistant plate with 302 stainless steel finish and timer for timed access
- Custom screening available

### Specifications

#### Certifications & Listings

- UL 294 listed
- CSA certified components
- IP65 *TS-12302 model only*

#### Electrical

- DPDT contacts rated 10A at 35 VDC
- Switch depth behind plate: 1-1/2"
- Switch terminated with 12" leads

# TS-23

## Vandal Resistant Request to Exit Station

The TS-23 request to exit station, with vandal resistant push button, provides an effective means of locking an exit door while still providing egress during an emergency. Vandal resistant push buttons are designed for indoor, outdoor, commercial and industrial applications.



TS-23

### Features

#### Standard Features

- Switch mounted on single gang wall plate with 430 stainless steel finish
- Vandal resistant 3/4" push button
- Plate screened: "EXIT"
- Momentary action switch

#### Options

- Finishes: multiple plate finishes available
- Custom screening available

### Specifications

#### Certifications & Listings

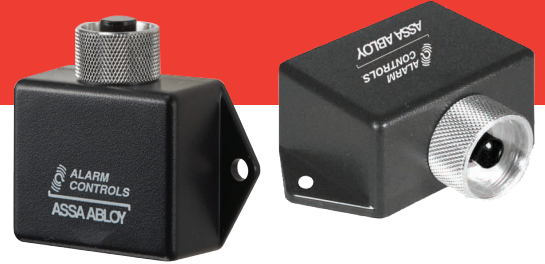
- UL 294 listed
- CSA approved components

#### Electrical

- DPDT contacts rated 10A at 35 VDC
- Switch depth behind plate: 1-1/2"
- Switch terminated with 12" leads

# TS-18, TS-19, TS-20

## Under Desk Door Release



The TS-18, TS-19, and TS-20 are push button controlled under desk/counter door releases for remote control of doors and access controls. Ideal for front desk and reception or hard to wire areas that require discreet control of locking devices.

## Features

### Standard Features

- **TS-18** with momentary action switch
- **TS-19** with one N/O and one N/C momentary action switch, can be used with either provided switch
- **TS-20** with alternate action switch ; can be used with either provided switch
- Black ABS plastic box with two mounting ears
- Surface mounted push button protected with 1" guard ring
  - Depressing push button operates switch contacts

### Options

- **TS-18D** with DPDT switch
- **TS-20D** with DPDT switch

## Specifications

### Certifications & Listings

- UL 636 listed
- CSA certified components

### Electrical

- **TS-18, TS-20** SPDT contacts rated 4A at 28 VDC
- **TS-18, TS-20** Switch terminated with 12" leads
- **TS-19** momentary contacts rated .75A at 125 VDC

# DE-1

## Delayed Exit Timer

The DE-1 provides an effective means of securing an exit door while still providing egress during an emergency. Alarm will sound with unauthorized door entry. Key switch reset is required to re-lock the door unless field wired for auto re-lock.



DE-1

## Features

### Standard Features

- Mounted on double gang stainless steel wall plate
- Key switch reset and re-lock
- Countdown buzzer and flashing lamp during timing mode
- 2" square push button; illuminated with hi-brightness LED
- Plate screened: "ALARM WILL SOUND"
- Button labeled: "PUSH AND HOLD FOR EMERGENCY DOOR RELEASE"
- Nuisance time delay: 0, 1, 2, or 3 seconds (field selectable)

- Max current draw is 60 mA
- 12 to 24 VDC
- Adjustable time delay from 2 to 30 seconds
- 85 dB at 3 feet

### Options

- **DE-1RED** with red push button

## Specifications

### Dimensions

- Enclosure: 1-1/2"H x 3"W x 3"L

### Electrical

- One N/O and one N/C contacts
- Contacts rated 3A at 30 VDC

# TS-25, TS-26

## Emergency Door Release

The single gang TS-25 and narrow stile TS-26 Emergency Door Release provide effective means of securing an exit door while still providing egress during an emergency.



TS-25

TS-26

## Features

### Standard Features

- **TS-25** switch mounted on single gang wall plate with 430 stainless steel finish
- **TS-26** switch mounted on narrow 1-3/4" wall plate with 302 stainless steel finish
- Plate screened "EMERGENCY DOOR RELEASE ALARM WILL SOUND"
- Switch illuminated with hi-brightness LED; button illuminated when in alarm state
- 85 dB Piezo buzzer
- Alternating DPDT action switch

### Options

- Finishes: multiple plate finishes available

## Specifications

### Electrical

- 12 or 24 VAC/VDC
- Contacts rated 3A at 35 VDC or 120 VAC
- Switch terminated with colored leads

# GBS-1

## Glass Break Emergency Door Release

The GBS-1 provides immediate unlocking of perimeter and interior doors providing egress during an emergency.

### Features

#### Standard Features

- ABS 757 plastic construction
- **GBS-1GLASS** Replacement glass available

### Specifications

#### Certifications & Listings

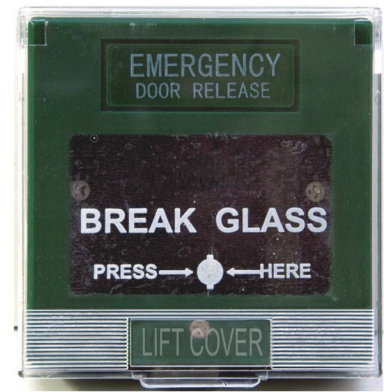
- UL 294 listed
- CUL approved components

#### Dimensions

- 3-1/2"H x 3-1/2"W x 2-1/2"D

#### Electrical

- SPDT switch rated  
10A at 24 VDC



# NTS

## No Touch Request to Exit Station

The NTS No Touch Request to Exit Station uses wireless sensors to reliably allow safe egress or to activate a device with the simple wave of a hand. Designed to reduce the risk of contamination for sensitive applications including: bathrooms, hospitals, labs, schools and offices.



NTS-1

NTS-2

NTS-3

### Features

#### Standard Features

- Stainless steel with vandal resistant face plate
- Sensor detection range up to 4"
- Bi-color Halo LED status indicators
- Plate screened "Wave To Open"
- Time delay settable for 1 to 35 seconds

#### Options

- **NTS-1** with single gang wall plate (4.5"H x 2.75"W)
- **NTS-2** with double gang wall plate (4.5"H x 4.5"W)
- **NTS-3** with narrow stile wall plate (4.5"H x 1.75"W)

#### Accessories

(available separately):

- **SMB-01, SMB-01A** Single gang surface mounting box
- **SMB-3, SMB-3D** Narrow stile surface mounting box
- **30203** Single gang, weather resistant surface mount back box

### Specifications

#### Certifications & Listings

- CE Certified

#### Electrical

- SPDT relay rated 2A at 30 VDC/VAC
- Operates on 12 VDC or 24 VDC

#### Operating Temperature

- -13 to + 131 F (-25 to 55 C)

# NTB Series

## Battery Powered No Touch Request to Exit Stations

The battery powered No Touch Request to Exit Activation Switches use infrared sensors to reliably allow safe egress or activation of a device with a simple hand presentation.

These request to exit solutions provide greater flexibility and control for sensitive applications, without the need to make costly modifications, extending touch-free access and egress in an easy and affordable way. The NTB Series is a direct replacement for traditional “request to exit” push buttons and can be used to quickly upgrade existing applications to code compliant no touch solutions using existing wiring.



NTB-1

NTB-1A

NTB-2

NTB-3



Plug-In DC Line Powered Cable Adapter Harness (Optional)

## Features

### Standard Features

- Battery or DC powered (optional)
- Low battery LED status indicator
- Wired communication
- Stainless steel with vandal resistant faceplate
- Sensor detection range up 4" for applications that require precise activation
- Built in obstruction detection
- Field-configurable bi-color (red/green) LED status indicators
- Selectable time delay 1 to 10 seconds
- Field-configurable on/off audible tones configurable via jumper
- Plate screened WAVE TO OPEN
- For use with swinging and sliding door applications

### Options

- **NTB-1** with single gang wall plate
- **NTB-1A** single gang with ADA symbol
- **NTB-2** with double gang wall plate
- **NTB-2A** double gang with ADA symbol
- **NTB-3** with narrow stile wall plate
- **NTB-3A** narrow stile with ADA symbol
- Available in stainless steel (standard), and black (BK)

### Accessories

(available separately):

- **SMB-01, SMB-01A** Single gang surface mounting box
- **SMB-3, SMB-3D** Narrow stile surface mounting box
- **30203** Single gang, weather resistant surface mount back box

## Specifications

### Certifications & Listings

- UL294 Listed
- CE Certified

### Electrical

- DPDT relay rated 2A at 30 VDC/VAC
- 2 AA alkaline batteries (included)
- Optional 12 or 24 VDC hard-powered

### Operating Temperature

- -13 to +131F [-25 to +55C]

# EXP

## Hazardous Environment Request to Exit Stations

Explosion Resistant Request to Exit Stations specifically designed for hazardous environments where flammable vapors and gases (Class I) and combustible dust (Class II) may be present or handled.



EXP-1

EXP-15

### Features

#### Standard Features

- Heavy cast NEMA type 7 enclosure
- 2" diameter push button silkscreened with black epoxy ink

#### Options

- **EXP-1** momentary action switch, button labeled "PUSH TO EXIT"
- **EXP-15** Momentary action switch, button labeled "PANIC"
- Custom screening available

### Specifications

#### Certifications & Listings

- Conforms to Class I, Division I and II, Group B, C, D, E, F, G
- UL and ULC approved for hazardous locations

#### Dimensions

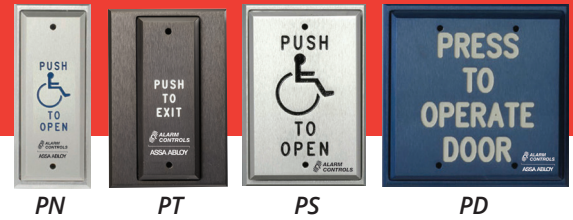
- 6-1/2"H x 4"W x 4-1/2"D

#### Electrical

- Contacts rated 5A at 35 VDC or 120 VAC
- One N/O and N/C contact
- Pipe thread 1/2-14 NPT

# PN, PT, PS, PD Series

## Vandal Resistant Push Plates



Vandal resistant push plates with hardwired switches are designed for automatic door activation and request to exit applications. Push plates are available in narrow, T-style, single and double gang options.

### Features

#### Standard Features

- **PN** 1-7/8" narrow stile plate is suitable for mullion mounting
- **PT/PS** T-Style and Single Gang plates mount on standard single gang electrical box
- **PD** Mounts on standard double gang electrical box
- Machined from solid aluminum with engraved text and anodized finish
- Tamper resistant mounting
- Vandal resistant; Designed for use in high traffic areas
- Pneumatic time delay 2 to 60 seconds

#### Options

- Finish: multiple plate finish options available
- Plate engraving, available with: "Push to Exit", "Push to Operate", "Push to Open", ADA Symbol, "Emergency Door Release"
- Engraving Fill: multiple options available

### Specifications

#### Certifications & Listings

- UL 294 (6th edition) listed
- NFPA-101

#### Dimensions

- **PN:**
  - Plate: 4-1/2"H x 1-7/8"W
  - Button: 4"H x 1-1/2"W
- **PT:**
  - Plate: 4-1/2"H x 3"W
  - Button: 4"H x 1-1/2"W
- **PS:**
  - Plate: 4-1/2"H x 3"W
  - Button: 4"H x 2-5/8"W
- **PD:**
  - Plate: 4-1/2"H x 4-1/2"W
  - Button: 4"H x 4-1/8"W

### Electrical

- Pneumatic Switch Specifications:
  - Contact Rating: 2A @ 28VDC
  - Switch depth behind plate: 1.50"
  - Switches terminated in 22AWG colored leads:
    - Normally-Closed Pair- Red
    - Normally-Open Pair- Blue

### How To Order

PLATE	SWITCH TYPE	FINISH	ENGRAVING*	PUSH PLATES - PN, PT, PS, PD
<b>PS</b>	<b>5</b>	<b>1</b>	<b>1</b>	<b>1</b>
<b>PN</b> - Narrow	<b>5</b> - Pneumatic Time Delay (2 to 60 seconds)	<b>1</b> - Clear	<b>1</b> - Push to Exit	<b>1</b> - Black
<b>PT</b> - T-Style		<b>2</b> - Bronze	<b>2</b> - Push to Operate	<b>2</b> - Red
<b>PS</b> - Single Gang		<b>3</b> - Brass	<b>4</b> - ADA Symbol Push to Open	<b>3</b> - White
<b>PD</b> - Double Gang		<b>4</b> - Blue	<b>5</b> - Emergency Door Release	<b>4</b> - Blue
		<b>5</b> - Black		
		<b>6</b> - Red		

\* Push to Operate engraving option not available on PN Narrow or PT T-Style Plates. Emergency Door Release engraving option not available on PD Double Gang Plates.

#### Part Number Example: PS5-111

For Single Gang Plate with SPDT Momentary Action Switch, Clear Finish, Engraved "Push To Exit" and filled in black in.

# JP Series

## Jumbo Push Plates



Jumbo push plates with hardwired switches are designed for automatic door activation and request to exit applications.

### Features

#### Standard Features

- Machined from steel with screened text
- Designed for use in high traffic areas
- 5-1/2" square steel push plate
- Mounts on a standard double gang electrical box
- Pneumatic time delay 2 to 60 seconds

#### Options

- Plate screened: available with: "Press to Exit", "Press to Open", or "Press to Operate"
- Plate finish: 302 Satin Stainless Steel or Blue wall plate

### Specifications

#### Plate Dimension

- 5-1/2"H x 5-1/2"W

#### Electrical

- Pneumatic:
  - One N/O and One N/C contact, rated 2A at 12-28 VDC
  - Switch depth behind plate: 2-1/4"
  - Switch time is repeatable +/- 10%
  - Time delay operator does not require power for timing function

#### Operating Temperature

- Pneumatic: -15F to +120F

JUMBO MODEL	SCREENING	PLATE FINISH	PNEUMATIC TIMER
JP	1 "Press to Exit" in blue	302 Stainless Steel	JP1-5
JP	2 "Press to Open" with ADA symbol in white	Blue	JP2-5
JP	3 "Press to Operate" in blue	302 Stainless Steel	JP3-5

# SREX-100

## Motion Sensor



Active focused infrared motion sensor is specifically designed for request to exit applications. SREX-100 has an adjustable narrow activation zone and cannot be deceived by objects placed under the door.

## Features

### Standard Features

- Narrow activation zone is limited to door handle area (range 28" to 48")
- Designed to eliminate cross-traffic activation
- Cannot be deceived by placing objects under door
- Adjustable time delay from 1 to 60 seconds
- Built-in buzzer, can be silenced if required
- Request to exit, keypad or card reader, and door position switch input
- 3 year warranty

## Specifications

### Certifications & Listings

- UL 294 listed
- CAN/ULC-S319 listed as an access control device

### Electrical

- Operates on 12 or 24 VAC or VDC; current draw 155 mA, auto sensing
- DPDT relay with 2A contacts; rated at 1.3A at 30 VDC or 24 VAC
- 14 pin connector with 4 ft of cable

### Operating Temperature

- +32F to +120 F (0 to 49C)

# REB-1A

## Request to Exit Push Bar



REB-1A provides mechanical activation for electronic release in a reliable, durable exit bar. Designed for use on electronically locked, non-fire-rated doors or as an initiate device for a delayed egress timer. Pressing the bar activates internal mechanical switches to release the lock.

### Features

#### Standard Features

- Low profile design requires only 1/4" movement for activation
- Mechanical action activates DPDT relay
- 5A rated output to allow free egress or initiate an exit delay timer
- Redundant switches ensure reliable, fault-tolerant operation
- All metal construction
- Includes 16ft 22 AWG 6 conductor cable and armored door cord
- Indoor operation

### Options

- Contact the factory for cover plates for retrofit applications. Covers unwanted holes, strengthen mounting area and provides clean aesthetic.
- **REB-1ADURO** with Duranodic (US 40) finish

### Specifications

#### Dimensions

- Length: 36"
- Custom lengths available, please contact factory

#### Electrical

- Max current 1.5A at 30 VDC

#### Operating Temperature

- -4 to +185F [-20 to +85C]

# Switch Information Guide

## Single Pole – Single Throw (SPST)

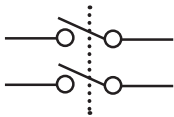
Switches that have one input and one output (NO or NC) and turn on or off in response to the switch action

## Single Pole – Double Throw (SPDT)

Switches with one input and two outputs. When the switch operation occurs, the connection shifts from output A to output B

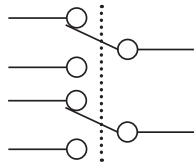
## Double Pole – Single Throw (DPST)

Two SPST switches that operate in tandem using one switch operation so that two outputs turn on or off simultaneously in reaction to the switch operation



## Double Pole – Double Throw (DPDT)

Two SPDT switches that operate in tandem using one switch operation so that each connection shifts simultaneously from its primary output to its secondary output



## Momentary Switch

A momentary switch changes state during activation and reverts to its original state upon deactivation. A doorbell is a common example of a momentary switch. A timer can be used to extend the effect of the switch operation for a specific amount of time.

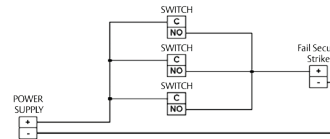
## Alternate Switch

An alternate switch changes state upon activation and does not change back until reactivated. A light switch is a common example of an alternate switch. Alternate switches are also called maintained or latching switches

## Normally Open Contacts (NO)

A normally open contact provides an open circuit where no current is flowing in its usual state.

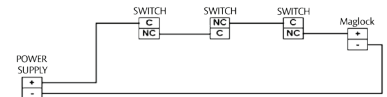
Wired in parallel for fail secure type electric locks (i.e. electric strike). Activating any switch will apply power, releasing the lock.



## Normally Closed Contacts (NC)

A normally closed contact provides a closed circuit where current is flowing in its usual state.

Wired in Series for fail safe type electric locks (i.e. Securitron Maglocks). Activating any switch will break power, releasing the lock.



# RemotePlates



# MP-20, MP-21

## Mini Remote Keyswitch Plates



MP-20

MP-21

Miniature sized remote key switch plates for single or double “D” holes. Provides an enhanced installation appearance for commercial and industrial applications.

## Features

### Standard Features

- **MP-20** 3/4" “D” hole for Key Switch/Ace lock
- **MP-21** 3/4" Double “D” hole for Medeco lock
- Miniature polished chrome plated brass plates
- Mounting screws included
- Easy to clean, smooth finish

### Options

- Contact factory for customized options

## Specifications

### Dimensions

- 1-1/4"W x 2-1/4"L

# MP-26

## Mini Remote Wall Plates



MP-26

MP-26A

Miniature sized remote wall plate with red N/O push button and guard ring. Option for black N/C push button.

## Features

### Standard Features

- Miniature polished chrome plated brass plates
- 1/4" N/O red push button with guard ring
- Mounting screws included
- Guard ring

### Options

- **MP-26A** for N/C black push button
- **K-05** Replacement N/C push button
- **K-13** Replacement N/O push button

## Specifications

### Dimensions

- 1-1/4"W x 2-1/4"L

### Electrical

- N/O contacts rated .75A at 125 VDC

# MP-28, MP-29, MP-30, MP-31

Mini Remote Wall Plates



MP-28

MP-29

MP-30

MP-31

Miniature sized remote wall plate with red, green, bi-colored, or blue LED.

## Features

### Standard Features

- **MP-28** with 1/4" red LED
- **MP-29** with 1/4" green LED
- **MP-30** with 1/4" bi-colored LED
- **MP-31** with 1/4" blue LED
- Miniature polished chrome plated brass plates
- Mounting screws included

### Options

- Add **L** for 1/2" LED (except on MP-30 - no 1/2" bi-color)

## Specifications

### Dimensions

- 1-1/4"W x 2-1/4"L

### Electrical

- Operates on 12 or 24 VDC
- LED current draw 8mA at 12 VDC, 12mA at 24 VDC
- LEDs include flying leads
- L option 1/2" LED current draw 9mA at 12 VDC, 19mA at 24 VDC

# MP-44

Mini Remote Wall Plate



Miniature sized remote wall plate with indicating push button.

## Features

### Standard Features

- Miniature polished chrome plated brass plates
- 2/5" push button changes from black to orange when depressed
- Mounting screws included
- Ideal for zone shunting

### Options

- **FA-200** Replacement push button

## Specifications

### Dimensions

- 1-1/4"W x 2-1/4"L

### Electrical

- DPDT alternate action indicating button
- Rated 2A at 28 VDC

# RP-01

## Remote Key Switch Plates

Slimline remote key switch plate with options available for single "D" hole, red LED status indicator and N/C tamper switch.

See Options for hole size and LED selections.

### Features

#### Standard Features

- Slimline 1-1/2" front plate with stainless steel finish
- Aluminum back plate with 3/4" "D" hole for Ace lock
- 1/4" red LED status indicator

#### Options

- **RP-01M** 3/4" Double "D" hole for Medeco lock, N/C tamper switch
- **RP-01A** N/O tamper switch
- **RP-01MA** 3/4" Double "D" hole for Medeco lock, N/O tamper switch
- **RP-01SG** with single gang plate
- **KA-105, KA-108** Key switch for RP-01
- **KA-109, KA-110** Key switch for M version
- Custom screening available
- **426** back box

### Specifications

#### Dimensions

- 1-1/2"W x 4-1/2"H

#### Electrical

- N/C tamper switch
- LEDs current draw: 8mA at 12 VDC, 12mA at 24 VDC
- 6" red and black leads



RP-01

# RP-02

## Remote Key Switch Plate

Slimline remote ivory key switch plate with white push button and LED status indicator.

### Features

#### Standard Features

- Slimline 1-1/2" front plate with ivory finish
- White flush push button
- Aluminum back plate
- 1/4" red LED status indicator

#### Options

- **RP-02SS** Front plate in stainless steel finish available
- **426** back box
- **450** Replacement button
- Custom screening available

### Specifications

#### Dimensions

- 1-1/2"W x 4-1/2"H

#### Electrical

- N/O push button
- LED current draw 8mA at 12 VDC, 12mA at 24 VDC
- 6" red and black leads



# RP-03

## Remote Key Switch Plate

Slimline remote key switch plate for single "D" hole. Includes red and green LED status indicators and N/C tamper switch.

See Options for hole size and selections.



RP-03

### Features

#### Standard Features

- Slimline 1-1/2" front plate with stainless steel finish
- Aluminum back plate with 3/4" "D" hole for Ace lock
- 1/4" red and green LED

#### Options

- **RP-03M** 3/4" Double "D" hole for Medeco lock, N/C tamper switch
- **RP-03A** N/O tamper switch
- **RP-03MA** 3/4" Double "D" hole for Medeco lock, N/O tamper switch
- **KA-105, KA-108** Key switch for use with RP-03
- **KA-109, KA-110** Key switch for M version
- **RP-03SG** single gang
- **426** back box
- Custom screening available

### Specifications

#### Dimensions

- 1-1/2"W x 4-1/2"

#### Electrical

- N/C tamper switch
- LED current draw: 8mA at 12 VDC, 12mA at 24 VDC
- 6" red and black lead

# RP-04

## Remote Wall Plate

Single gang remote wall plate with "D" hole for Ace lock. Includes red and green LED status indicators.



RP-04

### Features

#### Standard Features

- Single gang wall plate with stainless steel finish
- 3/4" "D" hole for Ace lock
- 1/4" red and green LEDs

#### Options

- **RP-04L** for 1/2" LED
- **KA-105, KA-108** Key switch for use with RP-04
- Finishes: multiple plate finishes available

### Specifications

#### Dimensions

- 2-3/4"W x 4 1/2"

#### Electrical

- N/C tamper switch
- LED current draw: 8mA at 12 VDC, 12mA at 24 VDC
- LEDs have flying leads
- L option 1/2" LED current draw 9mA at 12 VDC, 19mA at 24 VDC

# RP-05

## Remote Wall Plate



RP-05

Single gang remote wall plate with white push button and red and green LED status indicators.

### Features

#### Standard Features

- Single gang wall plate with stainless steel finish
- White flush push button
- 1/4" red and green LEDs

#### Options

- **RP-05SLIM** with slim plate
- **450** replacement push button
- Finishes: multiple plate finishes available

### Specifications

#### Dimensions

- 2-3/4"W x 4 1/2"H

#### Electrical

- N/O push button rated .5A
- LED current draw 8mA at 12 VDC, 12mA at 24 VDC
- 6" red and black leads

# RP-06

## Remote Wall Plate



Single gang remote wall plate with double "D" hole for Medeco lock and red and green LED status indicators.

### Features

#### Standard Features

- Single gang wall plate with stainless steel finish
- Double "D" hole for Medeco lock
- 1/4" red and green LEDs

#### Options

- **KA-109, KA-110** Key switch for use with RP-06
- Finishes: multiple plate finishes available

### Specifications

#### Dimensions

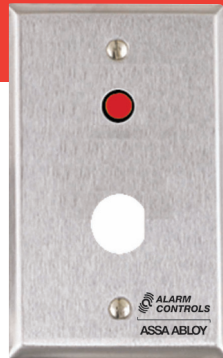
- 2-3/4"W x 4 1/2"H

#### Electrical

- LED current draw 8mA at 12 VDC, 12mA at 24 VDC
- 6" red and black leads

# RP-07

## Remote Wall Plate



Single gang remote wall plate with "D" hole for Ace lock and red LED status indicator.

### Features

#### Standard Features

- Single gang wall plate with stainless steel finish
- 3/4" "D" hole for Ace lock
- 1/4" red LED

#### Options

- **KA-105, KA-108** Key switch for use with RP-07
- Finishes: multiple plate finishes available

### Specifications

#### Dimensions

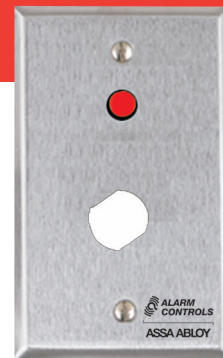
- 2-3/4"W x 4 1/2"H

#### Electrical

- LED current draw 8mA at 12 VDC, 12mA at 24 VDC
- 6" red and black leads

# RP-08

## Remote Wall Plate



Single gang remote wall plate with double "D" hole for Medeco lock and red LED status indicator.

### Features

#### Standard Features

- Single gang wall plate with stainless steel finish
- Double "D" hole for Medeco lock
- 1/4" red LED

#### Options

- **KA-109, KA-110** Key switch for use with RP-08
- Finishes: multiple plate finishes available

### Specifications

#### Dimensions

- 2-3/4"W x 4 1/2"H

#### Electrical

- LED current draw 8mA at 12 VDC, 12mA at 24 VDC
- 6" red and black leads

# RP-09

## Remote Wall Plate



RP-09

RP-09L

Single gang remote wall plate with LED status indicators. See Options for plate size and LED selections.

## Features

### Standard Features

- 1/4" red and green LEDs, mounted horizontally
- Single gang wall plate with stainless steel finish

### Options

- **RP-09L** with 1/2" red and green LEDs, mounted vertically
- **RP-09SLIMLINE** with 1/4" red and green LEDs on 1-1/2" wall plate
- **RP-09LSLIMLINE** with 1/2" LEDs on 1-1/2" plate
- Finishes: multiple plate finishes available

## Specifications

### Dimensions

- **RP-09, RP-09L:** 2-3/4"W x 4-1/2"H
- **RP-09SL:** 1-1/2"W x 4-1/2"H

### Electrical

- 1/4" LED current draw 8mA at 12 VDC, 12mA at 24 VDC
- 1/2" LED current draw 9mA at 12 VDC, 19mA at 24 VDC
- LEDs include flying leads

# RP-20

## Remote Wall Plate



Single gang remote wall plate with "D" hole for Ace lock

## Features

### Standard Features

- Single gang wall plate with stainless steel finish
- 3/4" "D" hole for Ace lock

### Options

- **KA-105, KA-108** Key switch for use with RP-20
- Finishes: multiple plate finishes available
- Custom screening available

## Specifications

### Dimensions

- 2-3/4"W x 4-1/2"H

# RP-21

## Remote Wall Plate



Single gang remote wall plate with double "D" hole for Medeco lock

### Features

#### Standard Features

- Single gang wall plate with stainless steel finish
- Double "D" hole for Medeco lock

#### Options

- **KA-109, KA-110** Key switch for use with RP-21
- Finishes: multiple plate finishes available
- Custom screening available

### Specifications

#### Dimensions

- 2-3/4"W x 4-1/2"H

# RP-22

## Remote Wall Plate



Single gang remote wall plate with 1-1/8" hole for Sonalert audible indicators.

### Features

#### Standard Features

- Single gang wall plate with satin stainless steel finish
- 1-1/8" hole for SC628 Sonalert audible indicators, or equivalent

#### Options

- **SC628** sounder
- Finishes: multiple plate finishes available
- Custom screening available

### Specifications

#### Dimensions

- 2-3/4"W x 4-1/2"H

# RP-23

## Remote Wall Plate

Single gang remote wall plate with hole for Piezo sounders and buzzers. See Options for size selections.

### Features

#### Standard Features

- 3/4" hole for PA-100 or PA-300 Piezo sounders
- Single gang wall plate with satin stainless steel finish

#### Options

- **RP-23A** with 5/8" hole for LA32 Buzzer
- **RP-23ASLIMLINE** with 1-1/2" plate
- Finishes: multiple plate finishes available
- Custom screening available

### Specifications

#### Dimensions

- 2-3/4"W x 4-1/2"H



RP-23

# RP-24, RP-25

## Remote Key Switch Plates

Slimline remote key switch plate.

### Features

#### Standard Features

- **RP-24** back plate has "D" hole for Ace lock
- **RP-25** back plate has double "D" hole for Medeco lock
- Slimline 1-1/2" plate with stainless steel finish
- Aluminum back plate with N/O tamper switch

#### Options

- **RP-24SG** with single gang stainless steel plate
- **KA-105, KA-108** Key switch for use with RP-24
- **KA-109, KA-110** Key switch for use with RP-25
- **426** back box
- Finishes: multiple plate finishes available
- Custom screening available

### Specifications

#### Dimensions

- 1-1/2"W x 4-1/2"

#### Electrical

- N/O tamper switch
- Contacts rated .75A at 125 VDC



RP-24

RP-25

# RP-26

## Remote Wall Plate

Remote wall plate with red N/O push button and guard ring. See Options for size and push button selections.



RP-26

### Features

#### Standard Features

- **RP-26** N/O red push button with guard ring
- Switch mounted on wall plate with stainless steel finish

#### Options

- **RP-26A** single gang wall plate with N/C black push button with guard ring
- **RP-26SLIM** 1-1/2" slimline wall plate with N/O red push button with guard ring
- **RP-26ASLIM** 1-1/2" slimline wall plate with N/C black push button with guard ring
- **KA-05, KA-13** replacement buttons
- Finishes: multiple plate finishes available
- Custom screening available

### Specifications

#### Dimensions

- 2-3/4"W x 4-1/2"H

# RP-27

## Remote Wall Plate

Single gang remote wall plate with two N/O red push buttons. See Options for size and push button selections.



RP-27

### Features

#### Standard Features

- **RP-27** with two N/O red push buttons, each with guard ring
- Switch mounted on wall plate with stainless steel finish

#### Options

- **RP-27A** single gang wall plate with two N/C black push buttons, each with guard ring
- **RP-27SLIM** 1-1/2" plate with two N/C red push buttons, each with guard ring
- **RP-27ASLIM** 1-1/2" plate with black push buttons
- **KA-05, KA-13** replacement buttons
- Finishes: multiple plate finishes available

### Specifications

#### Dimensions

- 2-3/4"W x 4-1/2"H

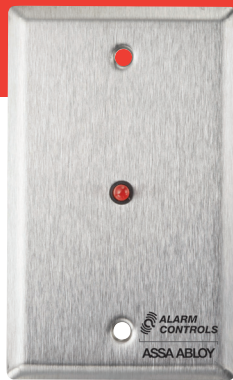
#### Electrical

- Momentary contacts rated .75A at 125 VDC
- N/O or N/C push buttons

# RP-28

## Remote Wall Plate

Remote wall plate with red LED. See Options for plate size and LED selections.



RP-28

### Features

#### Standard Features

- **RP-28** 1/4" red LED
- Switch mounted on single gang wall plate with stainless steel finish

#### Options

- **RP-28L** with 1/2" red LED
- **RP-28BI** with 1/4" bi-colored LED
- **RP-28FLASHING** 1/4" flashing LED
- **RP-28SL** 1-1/2" plate
- **RP-28302** with waterproof 302 plate
- **RP-28L302** with waterproof 302 plate and 1/2" LEDs
- Finishes: multiple plate finishes available

### Specifications

#### Dimensions

- 2-3/4"W x 4-1/2"H

#### Electrical

- 1/4" LED operates on 12 or 24 VDC, current draw 8mA at 12 VDC, 12mA at 24VDC
- 1/2" LED operates on 12 or 24 VDC, current draw 9mA at 12 VDC, 19mA at 24VDC
- LEDs have flying leads

# RP-29

## Remote Wall Plate

Single gang remote wall plate with green LED. See Options for plate size and LED selections.



RP-29L

### Features

#### Standard Features

- **RP-29** 1/4" green LED
- Switch mounted on single gang wall plate with stainless steel finish

#### Options

- **RP-29L** with 1/2" green LED
- **RP-29SLIMLINE** 1-1/2" plate
- **RP-29L302** 1/2" LEDs and weatherproof 302 plate
- **RP-29LSLIMLINE** 1/2" LED and 1-1/2" plate
- Finishes: multiple finishes available

### Specifications

#### Dimensions

- 2-3/4"W x 4-1/2"H

#### Electrical

- 1/4" LED operates on 12 or 24 VDC, current draw 8mA at 12 VDC, 12mA at 24VDC
- 1/2" LED operates on 12 or 24 VDC, current draw 9mA at 12 VDC, 19mA at 24VDC
- LEDs have flying leads

# RP-30

## Remote Wall Plate

Single gang remote wall plate with red LED. Includes hole for switch mounting.



RP-30

RP-30L

## Features

### Standard Features

- **RP-30** 1/4" red LED
- Single gang wall plate with stainless steel finish
- 1/2" hole for switch mounting

### Options

- **RP-30L** with 1/2" red LED
- Finishes: multiple platefinishes available

## Specifications

### Dimensions

- 2-3/4"W x 4-1/2"H

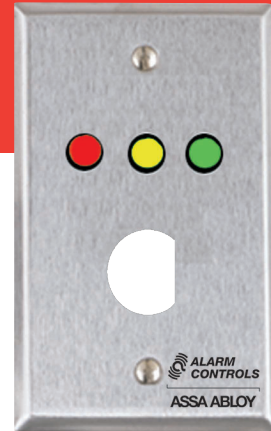
### Electrical

- 1/4" LED operates on 12 or 24 VDC, current draw 8mA at 12 VDC, 12mA at 24VDC
- 1/2" LED operates on 12 or 24 VDC, current draw 9mA at 12 VDC, 19mA at 24VDC
- LEDs have flying leads

# RP-33

## Remote Wall Plate

Single gang remote wall plate with multiple LED indicators and “D” hole for Ace lock. RP-33 is designed to function as an arming station for a simple burglar alarm panel. With added key switch, sold separately, the LEDs indicate if the panel is armed (red), if the opening is closed/secured (green), and if the alarm has been triggered (yellow).



## Features

### Standard Features

- Single gang wall plate with stainless steel finish
- 1/4" red, yellow, and green LEDs; hi-brightness illumination
- 3/4" "D" hole for Ace lock

### Options

- **RP-33SLIM** 1-1/2" plate
- **KA-105, KA-108** Key switch for use with RP-33
- Finishes: multiple plate finishes available
- Custom screening available

## Specifications

### Dimensions

- 2-3/4"W x 4-1/2"H

### Electrical

- LED operates on 12 or 24 VDC, current draw 8mA at 12 VDC, 12mA at 24VDC
- 6" red and black leads

# RP-35

## Remote Wall Plate



Single gang remote wall plate with multiple LED indicators and white arming push button. Designed to function as an arming station for a simple burglar alarm panel. LEDs indicate if the panel is armed (red), if the opening is closed/secured (green), and if the alarm has been triggered (yellow).

## Features

### Standard Features

- Single gang wall plate with stainless steel finish
- 1/4" red, yellow, and green LEDs; hi-brightness illumination
- N/O flush white push button

### Options

- **450** replacement push button
- Finishes: multiple plate finishes available

## Specifications

### Dimensions

- 2-3/4"W x 4-1/2"H

### Electrical

- LED operates on 12 or 24 VDC, current draw 8mA at 12 VDC, 12mA at 24VDC
- N/O push button, rated .5A
- 6" red and black leads

# RP-44, RP-45, RP-46, RP-47, RP-48

## Remote Wall Plates



RP-44

RP-45

RP-46

RP-47

RP-48

RP-46P/F/M3C

Remote wall plates with single or multiple indicating push buttons that change from black to orange when depressed. Ideal for applications where zone shunting is required. See Options for size and label selections.

## Features

### Standard Features

- **RP-44** single switch
- **RP-45** two switches
- **RP-46** three switches
- **RP-47** four switches
- **RP-48** six switches
- Switch(es) mounted on single gang wall plate with stainless steel finish
- Alternate action push buttons change from black to orange when depressed
- Ideal for zone shunting
- Can be converted to momentary operation

## Options

- **RP-44SLIM, RP-45SLIMLINE** switch mounted on 1-1/2" wall plate (RP-44 and RP-45 models only)
- **RP-46P/F/M** with Police, Fire, Medical Station labels in black (RP-46 model only)
- **RP-46P/F/M3C** with Police, Fire, Medical Station colored labels (RP-46 model only)
- **FA-200** Replacement button
- Finishes: multiple plate finishes available
- Custom screening available

## Specifications

### Dimensions

- Varies by plate size

### Electrical

- DPDT indicating shunt switches, each contact rated at 2A

# RP-49

## Remote Wall Plate

Single gang remote key switch plate with indicating push button and "D" hole for Ace lock.



RP-49

### Features

#### Standard Features

- Single gang wall plate with stainless steel finish
- Red indicating push button
- 3/4" "D" hole for Ace lock

#### Options

- **RP-49MOM** with momentary switch
- **KA-105, KA-108** Key switch for use with RP-49
- Finishes: multiple plate finishes available
- Custom screening available

### Specifications

#### Dimensions

- 2-3/4"W x 4-1/2"H

#### Electrical

- DPDT contact rated 2A at 28 VDC

# RP-50

## Remote Wall Plate

Single gang remote key switch plate with 3/4" "D" hole for lock on backplate and red and green status indicators.



RP-50

### Features

#### Standard Features

- Single gang wall plate with stainless steel finish
- 1/4" red and green LEDs; hi-brightness illumination
- 3/4" "D" hole on back plate for Ace lock

#### Options

- **RP-50M** with double "D" hole for Medeco lock
- **KA-105, KA-108** Key switch for use with RP-50
- **KA-109, KA-110** Key switch for M version
- Finishes: multiple plate finishes available

### Specifications

#### Dimensions

- 2-3/4"W x 4-1/2"H

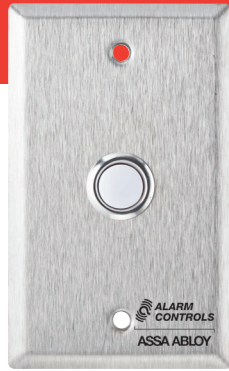
#### Electrical

- LEDs operate on 12 or 24 VDC, current draw 8mA at 12 VDC, 12mA at 24VDC
- N/C tamper switch, contacts rated .75A at 125 VDC
- 6" red and black leads

# RP-100

## Remote Wall Plate

Single gang remote wall plate with white push button.



RP-100

## Features

### Standard Features

- Single gang wall plate with stainless steel finish
- White flush push button

### Options

- **RP-100302** with weather resistant 302 stainless steel plate
- **RP-100SLIM** 1-1/2" plate
- **450** replacement push button
- Finishes: multiple plate finishes available
- Custom screening available

## Specifications

### Dimensions

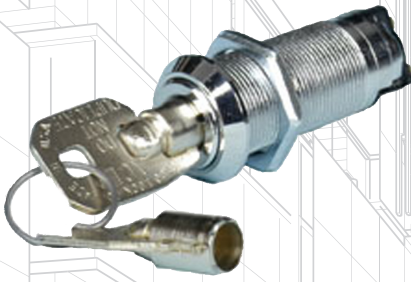
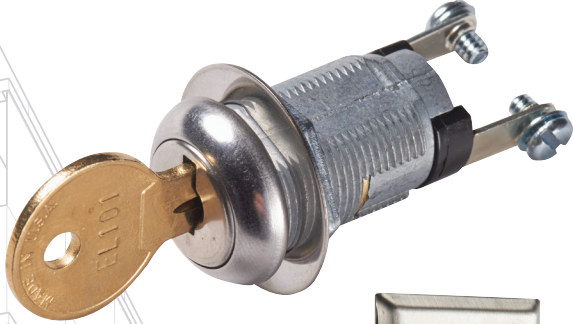
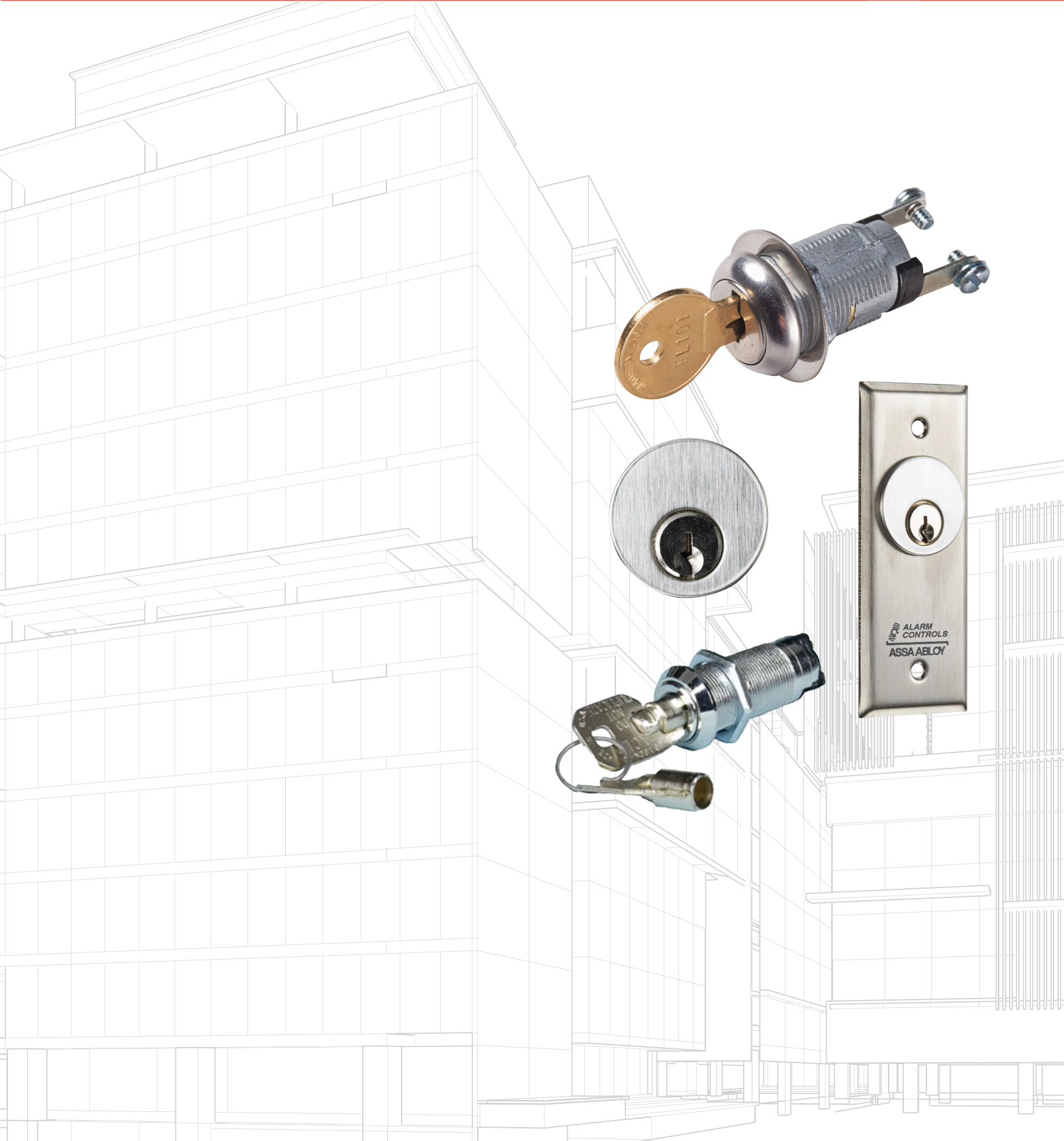
- 2-3/4"W x 4-1/2"H

### Electrical

- N/O push button, rated .5A at 35 VDC

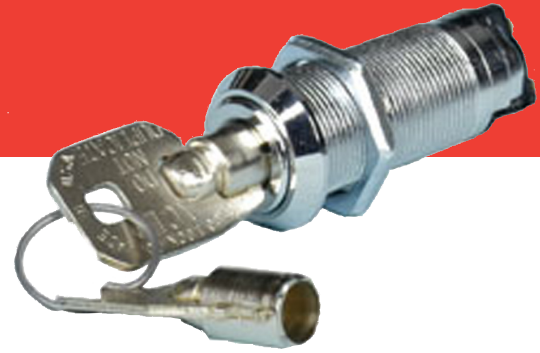
See System Accessories  
for replacement  
components, buttons,  
and LEDs.

# KeySwitches



# KA Series

## Ace Terminal Key Switches



KA-105

Ace round on-off key switch lock supplied with two keys. Key is removable in ON or OFF position, depending on model.

### Features

#### Standard Features

- Ace round switch key
- Supplied with two keys

#### Options

- Key removable in multiple positions depending on model, see chart below
- Add **A** for keyed alike

### Specifications

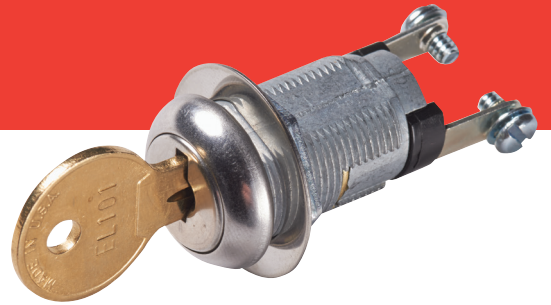
#### Electrical

- Contact rated 7A (restive) at 28 VDC or 7A at 125 VAC
- Screw terminals

Model	Description
KA-105	ON/OFF switch key removable in ON position, keyed different
KA-105A	Same as KA-105 except keyed alike
KA-106	ON/OFF switch key removable OFF position, keyed different
KA-106A	Same as KA-106 except keyed alike
KA-107	Momentary switch key removable in OFF position, keyed different
KA-107A	Same as KA-107 except keyed alike
KA-107ANC	Same as KA-107A except key removable in ON position
KA-108	ON/OFF switch key removable both positions, keyed different
KA-108A	Same as KA-108 except keyed alike
PL910	Replacement key for KA-105A & KA-108A
PL927	Replacement key for KA-106A & KA-107A

# KA Series

## Flat Key Switches



KA-109A

Single or double bitted flat on-off key switch lock supplied with key. Key is removable in ON or OFF position, depending on model.

### Features

#### Standard Features

- Bitted flat switch key
- Supplied with two keys

#### Options

- Key removable in multiple positions depending on model, see chart below
- Available in single or double bitted key, see model chart
- Add **A** for keyed alike

### Specifications

#### Electrical

- Contact rated 2A at 46 VDC or 2.5A at 120 VAC
- Screw terminals (except KA-111 and KA-111A which have 8" color coded wire leads)

Model	Description
KA-109	Single bitted flat key, ON/OFF keyswitch, key removable in ON or OFF position, keyed different
KA-109A	Same as KA-109 except keyed alike
KA-110	Single bitted flat key, momentary switch, key removable in OFF position, keyed different
KA-110A	Same as KA-110 except keyed alike
KA-111	Double bitted flat key, removable in ON or OFF position SPDT switch, eight inch colored, keyed different
KA-111A	Same as KA-111 except keyed alike
EL101	Replacement key for KA-109A, KA-110A
2405	Replacement key for KA-111A

# MCK Series

## Mortise Cylinder Stations



MCK-1



MCK-4

Slimline or single gang mortise cylinder key switch stations. Choose between momentary action switch that remains active as long as it's depressed, or alternate action switch that alternates between open (disconnected) and closed (connected) each time it's pressed. Available with LED options.

### Features

#### Standard Features

- Stainless steel wall plate accepts standard 1-1/8" mortise cylinder
- Tamper-proof and slotted-head screws included
- Mortise Cylinders not included, available separately (CY-1, CY-1A)

#### Options

- Momentary or alternate switch, see model chart
- SPDT or DPDT, see model chart
- No LED, green LED, green and red LEDs, see model chart
- Pneumatic timer: 2 to 45 seconds, see model chart
- Add **WP** for weather resistant cover and surface mount box. Available for single gang models only.

### Specifications

#### Electrical

- Contacts rated 4A at 28 VDC
- LEDs operate on 12 or 24 VDC/VAC
- 6" red and black leads
- Switch depth behind plate: 1-1/4"
- Switches terminated in colored leads

#### Operating Temperature

- +15 to +120F [-9 to +49C]

Switch Type	1.75" Wide	1.75" Wide Green LED	1.75" Wide Green LED Red LED	Single Gang	Single Gang Green LED	Single Gang Green LED Red LED
SPDT Momentary Action	MCK-1	MCK-2	MCK-3	MCK-4*	MCK-5*	MCK-6*
SPDT Alternate Action	MCK-1-2	MCK-2-2	MCK-3-2	MCK-4-2*	MCK-5-2*	MCK-6-2*
DPDT Momentary Action	MCK-1-3	MCK-2-3	MCK-3-3	MCK-4-3*	MCK-5-3*	MCK-6-3*
DPDT Alternate Action	MCK-1-4	MCK-2-4	MCK-3-4	MCK-4-4*	MCK-5-4*	MCK-6-4*
Pneumatic Timer (2 to 45 seconds)	N/A	N/A	N/A	MCK-4-5*	MCK-5-5*	MCK-6-5*

\*Weather resistant cover and surface mount back box available for single gang option only. Add "-WP" to model number for the weather resistant option.

# CY-1 Series

## Mortise Cylinders



Mortise cylinder with two keys. Available keyed different or keyed alike.

## Features

### Standard Features

- 1-1/8" standard mortise cylinder
- Straight cam
- Supplied with two keys

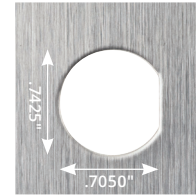
### Options

- **CY-1** keyed different
- **CY-1A** keyed alike

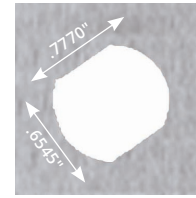
# Mounting Plates

## for ACE & Flat Key Switches

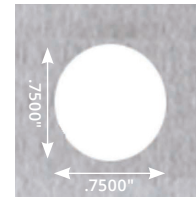
The Ace Key switches (KA-105 and KA-108 Series) use a single "D" hole while the Flat Key Switches (KA-109 and KA-110 Series) use a Medeco double "D" hole. KA-111 Series uses a 3/4" round hole.



*Single D  
(RP-20)*



*Double D  
(RP-21)*



*3/4" Round  
(RP-23)*

Model	NARROW STILE PLATES			SINGLE GANG PLATES			
	Slim SS No LED	Slim SS 1 GRN LED	Slim SS 1 RED LED	Single Gang SS No LED	Single Gang SS 1 GRN LED	Single Gang SS 1 RED LED	Single Gang Weather Cover Plate 1 RED & 1 Green 1/4" LED
All Ace Key Switches Models <b>KA105-KA108A</b> Inclusive	<b>RP-24</b>			<b>RP-20</b> * see below		<b>RP-07</b> <b>RP-50</b> has 1 red & 1 green LED	<b>WP-4</b>
Flat Key Switches Models <b>KA-109</b> to <b>KA110A</b> Only	<b>RP-25</b>		<b>CP1-1630</b>	<b>RP-21</b>		<b>RP-08</b>	<b>WP-6</b>
Flat Key Switches Models <b>KA-111</b> to <b>KA111A</b> Only	<b>RP-23SLIMLINE</b>			<b>RP-23</b>			

Legend:  
GRN = Green  
SS = Stainless Steel

# Digital Keypads



# KP-100A

## Digital Keypad



Self-contained digital keypad suitable for residential and commercial installations.

## Features

### Standard Features

- Single gang flush mount stainless steel plate with surface mount back box
- True 10-digit operation (10 digits plus \* and # keys)
- Capacity up to 1000 user codes, length from 4 to 8 digits
- 50 visitor codes, programmable for one time use or with time limit
- Fully programmable from the keypad
- Programmable passage and false code lockout mode capabilities
- Built-in tamper switch
- Red, green, and yellow LEDs for status and programming feedback
- Fail safe or fail secure capable
- Request to Exit (REX) input

- Audible and visible key press; keys are backlit for visibility
- For indoor applications only
- 3 year warranty

## Specifications

### Dimensions

- Keypad: 2-3/4" W x 4-1/2" H x 5/32" D
- Surface Mount Back Box: 2-13/16" W x 4-5/8" H x 1-7/16" D

### Electrical

- Operating Voltage: 12-24 VAC/VDC [+/- 10%]
- Operating Current:
  - 12 VDC: 40mA at rest, 100mA active
  - 24 VDC: 70mA at rest; 50mA active
- Output Relay: 1 SPDT dry contacts; 5A/30 VDC Max
- REX Input: N/O dry contact; 1mA/5VDC Max

- Tamper Switch: N/C dry contact; 50mA/24 VDC Max

### Operating Temperature

- -4 to +158F [-20 to +70C]
- Humidity: 5-95% relative humidity non-condensing

### Shipping Weight

- 0.5lb [0.23kg]

# KP-200

## Digital Keypad



Self-contained digital keypad. KP-200 is vandal-resistant and designed for indoor applications.

## Features

### Standard Features

- Surface mounted
- True 10-digit operation (10 digits plus \* and # keys)
- Capacity up to 100 user codes, length from 4 to 8 digits
- Fully programmable from the keypad
- Programmable passage and false code lockout mode capabilities
- Built-in tamper switch
- Red, green, and yellow LEDs for status and programming feedback
- Request to Exit (REX) input
- Die-cast metal keys with audible and visible key press; Keys are backlit for visibility in dark areas
- For indoor applications
- 3 year warranty

## Specifications

### Dimensions

- 3-1/5"W x 4-3/4" L x 3/5"D

### Electrical

- Operating voltage: 12 or 24 VAC or VDC, auto sensing
- Operating Current: 78 mA relay opening; 16 mA at rest
- Output 1 relay: SPDT contact rating: 1A at 24 VDC
- Output 2 relay: SPDT contact rating 1A at 24 VDC; Jumper selectable. N/O or N/C Dry contacts.

### Operating Temperature

- -4 to +158F [-20 to +70C]

### Shipping Weight

- 1 lb [0.45 kg]

# KP-300

## Digital Keypad

Self-contained, narrow stile digital keypad designed for pedestal/mullion mounting. Vandal resistant and weather resistant with durable metal keys and housing, suitable for indoor and outdoor applications.



## Features

### Standard Features

- Narrow stile mullion mount with die cast zinc alloy housing
- Narrow stile 10-digit operation (10 digits plus \* and # keys)
- Operates with card only, user code and card, or user code only
- Multiple outputs allow control of up to two devices (1000 users on output 1, 100 on output 2)
- All users can be programmed for card and/or codes at the device
- 50 Visitor cards and/or codes can be programmed for one time use or with time limit at the device
- Programmable passage and false-code lockout mode capabilities
- Built-in tamper switch
- Green and yellow LEDs for status and programming feedback
- Fail safe or fail secure capable

- Die-cast metal keys with audible and visible key press; Keys are backlit for visibility in dark areas
- For indoor or outdoor applications
- 3 year warranty

### Options

- Supplied with 2 EM cards. **EM-10** additional pack of 10 cards
- **EM-04** key fobs

## Specifications

### Certifications & Listings

- Conforms to IP65

### Dimensions

- 7-5/64" H x 1-13/16" W x 1" D

### Electrical

- Operating voltage: 12 VDC nominal, 11-15 VDC
- Operating Current: 60mA at rest; 95 mA active
- Output Relay 1: SPDT rated 2A at 24 VDC max; N/O and N/C dry contacts

- Output Relay 2: SPDT rated 1A at 24 VDC max; N/O and N/C dry contacts

### Operating Temperature

- -4°F to +158°F [-20°C to +70°C]
- Humidity: 5-95% relative humidity non-condensing

### Shipping Weight

- 1 lb [0.45 kg]

# KP-400

## Digital Keypad



Self-contained digital keypad. Vandal resistant and weather resistant with durable backlit metal keys, housing, and back box; designed for indoor and outdoor applications.

## Features

### Standard Features

- Surface mount with black back box and 302 stainless steel faceplate with tamper-proof screws
- True 10-digit operation (10 digits plus \* and # keys)
- Multiple outputs allow control of up to two devices (100 users on output 1, 10 on output 2)
- Fully programmable from the keypad
- Programmable passage and false-code lockout mode capabilities
- Built-in tamper switch
- Red, green and yellow LEDs for status and programming feedback
- Request to Exit (REX) input
- Duress output and door prop open alarm
- Black powder coated die cast aluminum back box

- Die-cast metal keys with audible and visible key press; Keys are backlit for visibility in dark areas
- For indoor or outdoor applications
- 3 year warranty

## Specifications

### Certifications & Listings

- Conforms to IP66

### Dimensions

- Keypad with Back Box:  
3-1/8" W x 4-1/2" L x  
1-3/4" to 2-1/2" D

### Electrical

- Operating voltage:  
12 or 24 VAC or VDC,  
auto sensing
- Operating Current:  
12VDC: 10 mA at rest, 100  
mA active;  
24VDC: 22 mA at  
rest, 120 mA active
- Output 1: SPDT rated  
5A at 24VDC
- Output 2: SPDT rated  
1A at 24 VDC

### Operating Temperature

- -4 to +158F [-20 to +70C]
- Humidity: 5-95% relative  
humidity non-condensing

### Shipping Weight

- 1 lb [0.45 kg]

# Electric Strikes



# AES-100

## Electric Strike



Grade 1 dual-voltage electric strike for heavy-duty applications. For use with cylindrical locksets, mortise latch or mortise exit devices.

## Features

### Standard Features

- For use with 5/8" and 3/4" throw cylindrical locksets
- Strike depth: 1-1/2"
- Field selectable, Fail Secure/Fail Safe
- Non-handed for easy installation
- Mounting kit includes two 4-7/8" stainless steel faceplates (one round corner and one square corner)

### Options

- **STR00004** 7-15/16" round corner faceplate, available separately

## Specifications

### Certifications & Listings

- BHMA Grade 1

### Holding Force

- Static Strength: 1500 lbs
- Dynamic Strength: 70 ft lbs

### Electrical

- Current draw: 130mA at 12 VAC, 70mA at 24 VAC; 210mA at 24 VDC
- Dual-voltage 12/24 VAC/VDC; continuous duty operation on DC

# AES-200

## Electric Strike

Grade 2 electric strike for medium-duty applications. For use with cylindrical locksets with latchbolt monitor and buzzer.



## Features

### Standard Features

- For use with 5/8" and 3/4" throw cylindrical locksets
- With Latch Bolt Monitor and Buzzer
- Strike depth: 1-1/2"
- Field selectable, Fail Secure/Fail Safe
- Non-handed for easy installation
- Adjustable keeper
- Mounting kit includes two 4-7/8" stainless steel faceplates (one round corner and one square corner)
- Preload capable up to 70 lbs
- Built-in buzzer, sounds when voltage is applied

### Options

- **STR00004** 7-15/16" round corner faceplate, available separately

## Specifications

### Certifications & Listings

- BHMA Grade 2

### Holding Force

- Static Strength: 1000 lbs
- Dynamic Strength: 70 ft lbs

### Electrical

- Dual voltage 12/24 VAC/VDC, continuous duty operation on DC
- Current draw 1 mA at 12 VDC/VAC, 70 mA at 24 VDC/VAC
- Strike monitored with SPDT dry contact

# AES-300

## Electric Strike



Flexible electric strike offers value and innovation in one compact product. Horizontal adjustability and small body design eliminates need to cut out the dust box making this a great option for retrofit applications.

### Features

#### Standard Features

- For use with 5/8" cylindrical locksets
- Strike depth: 1-3/16"
- Available in fail secure only
- Non-handed for easy installation
- Small body design eliminates the need to cut out the dust box

#### Options

- **AES-30012SB**, **AES-30024SB** strike body available separately

- Spacer and keeper shims for horizontal adjustment available in KIT option
- Mounting Kit with multiple faceplates available in KIT options only

### Specifications

#### Certifications & Listings

- BHMA Grade 2

#### Holding Force

- Static Strength: 1000 lbs
- Dynamic Strength: 50 ft lbs

#### Endurance

- UL tested to 250,000 cycles

#### Electrical

- Available in either 12 or 24 VAC or VDC
- Current draw: 200mA at 12 VAC/VDC, 100 mA at 24 VAC/VDC

Series	Model	Description
AES-300	AES-30012M1	12V strike body & ANSI metal jamb faceplate with rounded corners, for use with cylindrical locksets
	AES-30012M2	12V strike body & ANSI metal jamb faceplate with square corners, for use with cylindrical locksets
	AES-30012W1	12V strike body & ANSI wood jamb faceplate with rounded corners, for use with cylindrical locksets
	AES-30012KIT	12V strike body & all faceplates, for use with cylindrical locksets
AES-30024	AES-30024M1	24V strike body & ANSI metal jamb faceplate with rounded corners, for use with cylindrical locksets
	AES-30024M2	24V strike body & ANSI metal jamb faceplate with square corners, for use with cylindrical locksets
	AES-30024W1	24V strike body & ANSI wood jamb faceplate with rounded corners, for use with cylindrical locksets
	AES-30024KIT	24V strike body & all faceplates, for use with cylindrical locksets

# AES Series Electric Strikes

## Comparison Chart



### AES Strike Family

	AES-100	AES-200	AES-300
<b>Features</b>			
<b>Lockset Compatability</b>	Cylindrical Lockset, Mortise Latch or Mortise Exit Device without Deadbolt	Cylindrical Locksets	Cylindrical Locksets
<b>Handing</b>	Non-Handed	Non-Handed	Non-Handed
<b>Horizontally Adjustable</b>	No	Yes	Yes*
<b>Field Selectable</b>	Yes - Fail Safe / Fail Secure	Yes - Fail Safe / Fail Secure	No - Fail Secure Only
<b>Factory Tested</b>	1,500,000 Cycles	500,000 Cycles	500,000 Cycles
<b>Latch Throw</b>	Up to 3/4" Throw	Up to 5/8" Throw	Up to 5/8" Throw
<b>Applications</b>			
<b>Frame Material</b>	Hollow Metal or Aluminum	Hollow Metal or Aluminum	Hollow Metal, Aluminum or Wood
<b>Specifications</b>			
<b>ANSI/BHMA Grade</b>	Grade 1	Grade 2	Grade 2
<b>UL 1034 Burglary-Resistant</b>	Yes	Yes	Yes*
<b>Strike Body Depth</b>	1-1/2"	1-1/2"	15/16"
<b>Holding Force</b>			
<b>Static Strength</b>	1,500 lbs	1,000 lbs	1,000 lbs
<b>Dynamic Strength</b>	70 ft lbs	70 ft lbs	50 ft. lbs
<b>Electrical</b>			
<b>Dual Voltage</b>	Yes	Yes	No - Available in 12V or 24 models
<b>Current Draw</b>	210mA @ 12 VDC 105mA @ 24 VDC 130mA @ 12 VAC 70mA @ 24 VAC	200mA @ 12 VDC 70mA @ 24 VDC 130mA @ 12 VAC 70mA @ 24 VAC	200mA @ 12 VAC/VDC 100mA @ 24 VAC/VDC
<b>Options</b>			
<b>Faceplates</b>	Rounded and Square included standard	Rounded and Square included standard	<b>M1</b> ANSI 4-7/8" prep, hollow metal and aluminum, rounded corners <b>M2</b> hollow metal, wood and aluminum, square corners <b>W1</b> wood, rounded corners

\* Depending on faceplate used

# Monitoring & Control Stations



# SLP-XM Series

## Momentary Monitor & Control Stations

Monitor and control stations with rectangular illuminated DPDT momentary switches that remain active as long as they're depressed. Stations include LED status indicators and are designed to release or secure and monitor one or more electrified lock.



SLP-1M



SLP-5M



SLP-8M

## Features

### Standard Features

- Release or secure and monitor one or more electrified lock
- Switches mounted on wall plate with stainless steel finish. 1,2,3,4 gang options available.
- 1/2" red LED status indicator
- Green momentary push button; hi-brightness LED illumination

### Options

- **XM** with X designating the number of LEDs and illuminated momentary buttons. Specify 1 - 8 for that many LEDs/buttons.
- Custom legends, green and yellow LEDs, available as custom parts

## Specifications

### Dimensions

- Varies based on finished good

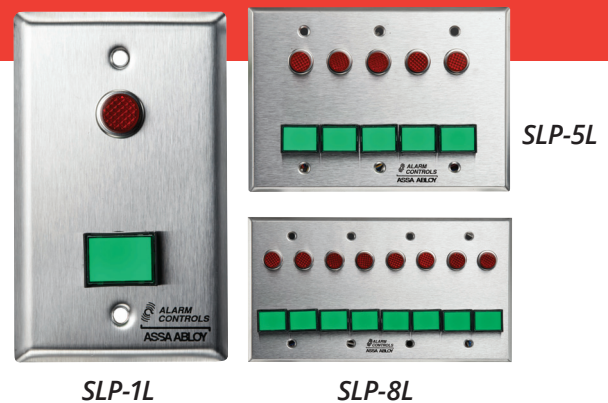
### Electrical

- DPDT switch contacts rated 3A at 35 VDC or 120 VAC
- Switch depth behind plate: 1-1/2"
- LED operates on 12 or 24 VDC/VAC
- Switch terminated with 12" colored leads

# SLP-XL Series

## Latching Monitor & Control Stations

Monitor and control stations with rectangular illuminated DPDT latching switches that alternate between open (disconnected) and closed (connected) each time they're pressed. Stations include LED status indicators and are designed to release or secure and monitor one or more electrified lock.



## Features

### Standard Features

- Release or secure and monitor one or more electrified lock
- Switches mounted on wall plate with stainless steel finish. 1,2,3,4 gang options available.
- 1/2" red LED status indicator
- Green alternating push button; hi-brightness LED illumination

### Options

- **XL** with X designating the number of LEDs and illuminated alternating buttons. Specify 1 - 8 for that many LEDs/buttons.
- Custom legends, green and yellow LEDs, available as custom parts

## Specifications

### Dimensions

- Varies based on finished good

### Electrical

- DPDT switch contacts rated 3A at 35 VDC or 120 VAC
- Switch depth behind plate: 1-1/2"
- LED operates on 12 or 24 VDC/VAC
- Switch terminated with 12" colored leads

# TS-55G

## Momentary Monitor & Control Station

Monitor and control station with round illuminated DPDT momentary push button that remains active as long as it's depressed. Station includes LED status indicator and is designed to release or secure and monitor one electrified lock.



TS-55G

TS-55R

### Features

#### Standard Features

- Release or secure and monitor one electrified lock
- Switches mounted on single gang wall plate with stainless steel finish
- 1-1/2" momentary green push button; hi-brightness LED illumination
- 1/2" red LED status indicator
- Button labeled "EXIT"

#### Options

- **TS-55R** with red push button
- **GR** guard ring
- **LUC** lift up cover

### Specifications

#### Certifications & Listings

- IP65 standard

#### Dimensions

- 2-3/4" x 4-1/2"

#### Electrical

- One N/O and one N/C contact rated 10A at 35 VDC or 120 VAC
- LED operates on 12 or 24 VDC/VAC
- LEDs include flying leads
- 1/2" LED operates on 12 or 24 VDC, current draw 9mA at 12 VDC, 19mA at 24 VDC

# TS-56G

## Latching Monitor and Control Station

Monitor and control station with round illuminated DPDT latching push button that alternates between open (disconnected) and closed (connected) each time it's pressed. Station includes LED status indicator and is designed to release or secure and monitor one electrified lock.



TS-56G

TS-56R

### Features

#### Standard Features

- Release or secure and monitor one electrified lock
- Switches mounted on single gang wall plate with stainless steel finish
- 1/2" red LED status indicator
- 1-1/2" alternating green push button; hi-brightness LED illumination
- Button labeled "EXIT"

#### Options

- **TS-56R** with red push button
- **GR** guard ring
- **LUC** lift up cover

### Specifications

#### Certifications & Listings

- IP65 standard

#### Dimensions

- 2-3/4" x 4-1/2"

#### Electrical

- One N/O and one N/C contact rated 10A at 35 VDC or 120 VAC
- LED operates on 12 or 24 VDC/VAC
- LEDs include flying leads
- 1/2" LED operates on 12 or 24 VDC, current draw 9mA at 12 VDC, 19mA at 24 VDC

# DTC

## Desktop Console



Desktop Console with single or multiple switch configurations. Choose between momentary action switches that remain active as long as they're depressed or alternate action switches that alternate between open (disconnected) and closed (connected) each time they're pressed. Designed to work with door status or lock status sensors in order to supervise and control several entry points from one main location.

### Configurable Options

- **M1** with 1-2 switches, specify number of switches when ordering
- **M2** with 3-12 switches, specify number of switches when ordering
- **M3** with 13-40 switches, specify number of switches when ordering
- Console: specify **G** (beige) or **K** (black)
- Switch type, specify: SPDT/DPDT, momentary/alternate
- Lens color: green, red, yellow, blue, white

- Illumination: None, 12 VDC, 24 VDC
- Button labels available as a custom part

### Specifications

#### Console Dimensions

- M1: 3-3/10"W x 5-7/10"L x 1-1/2"H
- M2: 6-9/10"W x 9-2/5"L x 2-1/2"H
- M3: 14"W x 8-3/10" x 3" (rear)/1-1/2" (front)

#### Switch Dimensions

- 5/8" x 7/8"

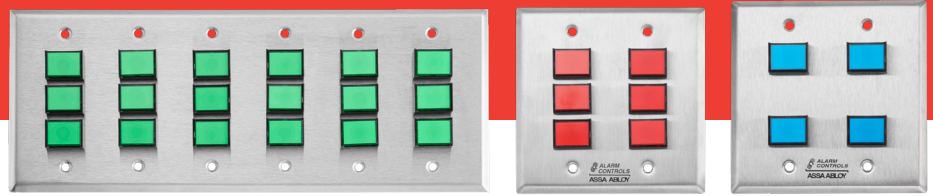
### Electrical

- LED current draw: 9mA nominal
- Contact rated 3A at 24 VDC
- Switches terminated in 22AWG colored 12" leads
  - Common: white
  - N/C: red
  - N/O: blue
  - LED+: Yellow
  - LED-: Black

### How To Order

CONSOLE	CONSOLE COLOR	SWITCH QUANTITY	SWITCH TYPE	LENS COLOR	ILLUMINATION
<b>M2</b>	<b>K</b>	<b>6</b>	<b>A</b>	<b>G</b>	<b>V1</b>
<b>M1</b> 1-2 switches	<b>G</b> - Beige	Number of switches required	<b>A</b> - SPDT Momentary Action	<b>G</b> - Green	<b>N</b> - None
<b>M2</b> 3-12 switches	<b>K</b> - Black		<b>B</b> - SPDT Alternate Action	<b>R</b> - Red	<b>V1</b> - 12VDC
<b>M3</b> 13-40 switches			<b>C</b> - DPDT Momentary Action	<b>Y</b> - Yellow	<b>V2</b> - 24VDC
			<b>D</b> - DPDT Alternate Action	<b>B</b> - Blue	
				<b>W</b> - White	

For pricing on custom Desktop Consoles, please contact the factory at 800.645.5538



CP Control Panel are available in sizes from one to six gangs with single or multiple switch configurations. Choose between momentary action switches that remains active as long as they're depressed or alternate action switches that alternate between open (disconnected) and closed (connected) each time they're pressed. Designed to work with door status or lock status sensors in order to supervise and control several entry points from one main location.

### Features

#### Standard Features

- Switches mounted on wall plates with 430 stainless steel finish

#### Options

- Number of switches (1-24 total): Each gang accepts up to four switches, specify number of switches when ordering
- Switch type, specify: SPDT/DPDT, momentary/alternate
- Lens color: green, red, yellow, blue, white

- Illumination: None, 12 VDC, 24 VDC
- For a control panel that requires multiple switch colors, multiple switch types, or custom labelling, please contact factory for custom part numbers.

### Specifications

#### Dimensions

- Switch: 5/8" x 7/8"
- Plate: varies based on finished good

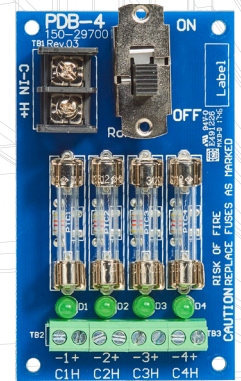
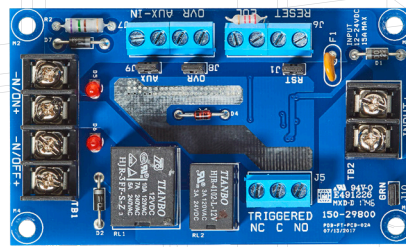
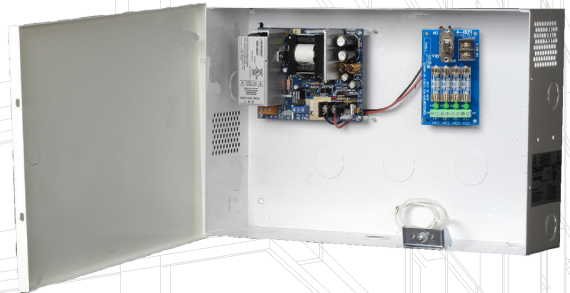
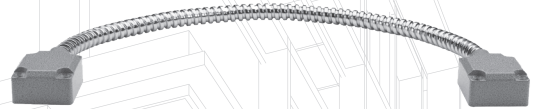
### Electrical

- N/O and N/C contacts rated 10A at 35 VDC or 120 VAC
- Switches terminated in 22AWG colored 12" leads
  - Common: white
  - N/C: red
  - N/O: blue
  - LED+: Yellow
  - LED-: Black

### How To Order

MODEL	PLATE SIZE (GANGS)	SWITCH QUANTITY	SWITCH TYPE	LENS COLOR	ILLUMINATION
<b>CP</b>	<b>2</b>	<b>8</b>	<b>A</b>	<b>R</b>	<b>V1</b>
<b>CP</b>	<b>1 - Gang</b>	Up to <b>4 (max)</b>	<b>A</b> - SPDT Momentary Action	<b>G</b> - Green	<b>N</b> - None
	<b>2 - Gang</b>	Up to <b>8 (max)</b>	<b>B</b> - SPDT Alternate Action	<b>R</b> - Red	<b>V1</b> - 12VDC
	<b>3 - Gang</b>	Up to <b>12 (max)</b>	<b>C</b> - DPDT Momentary Action	<b>Y</b> - Yellow	<b>V2</b> - 24VDC
	<b>4 - Gang</b>	Up to <b>16 (max)</b>	<b>D</b> - DPDT Alternate Action	<b>B</b> - Blue	
	<b>5 - Gang</b>	Up to <b>20 (max)</b>		<b>W</b> - White	
	<b>6 - Gang</b>	Up to <b>24 (max)</b>			

# Power



# APS-200 Series

## Power Supplies



Dual voltage switching power supply with battery charger designed to provide power for magnetic locks, electric strikes, card readers, sensors, access control boards and other components of access control systems.

## Features

### Standard Features

- 2 Amp Power Supply mounted in UL listed enclosure
- Tolerates brownout or overvoltage input +/- 15% of nominal voltage
- Thermal shutdown protection with auto restart
- Circuit breaker protects against overcurrent and reverse battery faults (batteries sold separately)
- Dedicated battery charging circuit prevents overvoltage on locking devices
- Low noise design provides better than linear performance
- Limited lifetime warranty

### Options

- **APS-2004C** 2 Amp Power Supply with one PD4C, four output PTC protected distribution boards
- **APS-200FT** 2 Amp Power Supply with one PDFT fire relay module

## Specifications

### Certifications & Listings

- UL 294 listed
- UL 603 listed
- ULC-S318 Listed
- ULC-S533 Listed
- RoHS Compliant
- REACH Compliant

### Dimensions

- Cabinet Size: 14" L x 14" W x 4-3/4" D

### Electrical

- Dual voltage 12 or 24 VDC field selectable output
- 115 or 230 VAC input
- Supports up to two sealed gel, AGM or wet lead acid batteries
- Up to 90% efficiency
- Low voltage ripple design as low as 240mV p-p

### Operating Temperature

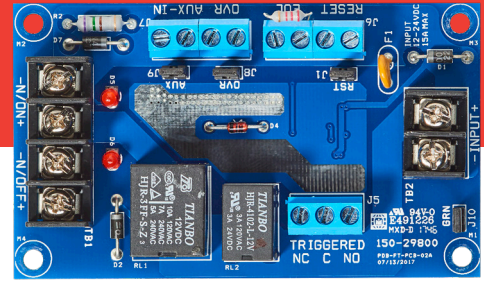
- -4 to +122F [-20 to +50C]

### Shipping Weight

- 12.7 lbs [5.76kg]

# PDFT

## Fire Relay Module



The PDFT Fire Relay Module is triggered in response to a fire system alarm condition. Transferred power can be used to unlock doors to allow free egress in case of emergency.

## Features

### Standard Features

- Individual LED indicators show which output is powered
- Form C contact indicates trigger status
- Latching or non-latching mode
- Can provide ground supervision via jumper configuration
- Output triggers include:
  - N/O or N/C with supervised end-of-line resistor
  - N/C override switch trigger input
  - N/C Auxiliary switch trigger input
  - Ground fault detection
  - Trigger status reporting
- Limited lifetime warranty

## Specifications

### Certifications & Listings

- UL 294 listed
- UL 603 listed
- ULC-S318 Listed
- ULC-S533 Listed

### Dimensions

- Board: 3-3/4" H x 2-1/4" W x 13/16" D
- Mounting: 3-7/16" H x 1-7/8" W

### Electrical

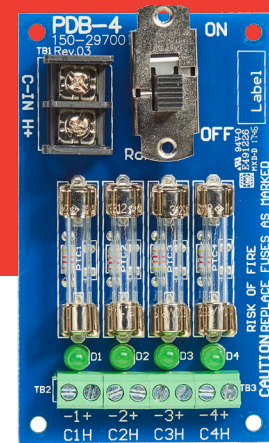
- 70 mA used for relay control
- Universal 12-24 VDC input
- 1A or 2A outputs
- 4A rate of relay

### Shipping Weight

- .75 lbs [0.45 kg]

# PD4C

## Power Distribution Module



Splits the primary AC or DC output from a power supply into multiple outputs of the same voltage type to separate equipment onto individual circuits.

## Features

### Standard Features

- 1A glass fuse
- Splits main board output into multiple outputs
- Each output has a status LED indicator
- Main input has a status LED indicator
- Accepts AC or DC input/ provides same output
- Has on/off power switch
- Separate fuse for main input surge protection-standard automotive ATO sizes
- Limited lifetime warranty

## Specifications

### Certifications & Listings

- UL 294 listed
- UL 603 listed
- ULC-S318 Listed
- ULC-S533 Listed

### Dimensions

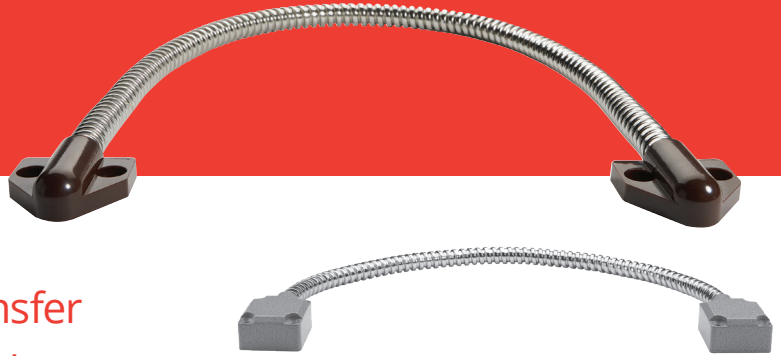
- Board: 3-3/4" H x 2-1/4" W x 1" D
- Mounting: 3-7/16" H x 1-7/8" W

### Electrical

- 12 V or 24 V output (based on power supply output)
- Fuses for individual outputs are standard 3AGC

# DL-1, DL-2

## Armored Door Loops



18" armored door loop used to transfer low-voltage electrical current from the door frame to the door. Available with either plastic (DL-1) or aluminum alloy (DL-2) end caps. Mounting hardware included.

## Features

### Standard Features

- 18" long armored door loop
- Mounting hardware included
- End Caps:
  - **DL-1:** white and brown plastic
  - **DL-2:** aluminum alloy
- Steel jacket resists abrasion and damage
  - **DL-1:** .250 I.D. steel
  - **DL-2:** rugged .375 I.D steel

### Options

- Custom lengths available
- **DL-2ELECTRO** DL-2 with ElectroLynx connector
- **DL-24** DL-2 w/ 24" armored door loop
- **DL-30** DL-2 w/ 30" armored door loop
- **DL-36** DL-2 w/ 36" armored door loop
- **DL-48** DL-2 w/ 48" armored door loop
- **DL-60** DL-2 w/ 60" armored door loop

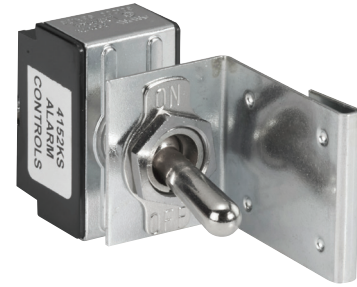
# PowerAccessories



## 4152

### Kill Switch

- Provides a safe and convenient way to disconnect panel power by removing power from back-up battery and AC source
- DPST toggle switch with 10 Amp contacts
- Unique clip allows quick and easy installation



## CL-3

### Camlock

- Used to secure control panel from tampering
- 1" cam
- Supplied with two single bitted flat keys, keyed alike
- Steel chrome plated lock
- Speed clip secures cam lock to panel cover
- Optional **CL-3 (50)** multi pack of 50



## DL2EC

### Door Loop Accessory

- DL-2 End Cap only



## AC25

### Armored Cables

- 25' long
- 0.1875 I.D. Armored Cable



## AC30

### Armored Cables

- 30' long
- .375 I.D Armored Cable



# System Accessories



# RT Series

## Wireless Transmitters



Wireless remote transmitters allow access control for up to three doors from one device. Ideal for front desk/reception applications or hard-to-wire locations. Designed to work with magnetic locks, electric strikes, keypads, gate operators and door operators. Kits include channel receiver and transmitter with mount and keychain.

## Features

### Standard Features

- Transmitter can be mounted under a desk or on a wall
- 12" antenna with up to 300' range
- Rolling code with over 1 billion code combinations
- Latching option keeps doors unlocked until button is pressed again
- Receiver can be controlled by up to 30 transmitters
- Receiver has a 5 second momentary output

### Options

- **RT-1** one receiver, two transmitters
- **RT-1T** additional transmitter
- **RT-1TW** additional transmitter with wire lead
- **RT-3** three receivers, one transmitter
- **RT-3R** additional receiver

## Specifications

### Certifications & Listings

- CE Certified
- RoHS compliant

### Dimensions

- 2-1/2"L x 1-1/4"W x 3/4"D

### Electrical

- Receiver operates on 12 or 24 VDC/VAC
- Max current draw 50mA
- Relay SPDT contact rated 1A at 30 VDC or 120 VAC
- Working frequency: 433.92 MHz

### Operating Temperature

- -4 to +140F [-20 to +60C]

# TS-34 Series

## Mounted Wall Buzzers



Audible buzzer station for mounting on single gang or narrow wall plate

### Features

#### Standard Features

- Buzzer mounted on wall plate with stainless steel finish
- Sound level 85db at 3ft

#### Options

- **TS-34** mounted on single gang wall plate with 430 stainless steel finish
- **TS-34N** mounted on narrow wall plate with 302 stainless steel
- Finishes: multiple plate options available
- Custom screening available

### Specifications

#### Certifications & Listings

- RoHS compliant

#### Electrical

- Operates on 3 to 28 VDC
- 12" red and black leads

# TS-41

## Mounted Wall Buzzer



Sonalert buzzer mounted on single gang wall plate

### Features

#### Standard Features

- Buzzer mounted on single gang wall plate with stainless steel finish
- Sound level 85db at 3ft

#### Options

- Finishes: multiple plate options available
- Custom screening available
- **SCVC** volume control

### Specifications

#### Electrical

- Current draw 3mA at 6VDC, 18mA at 28 VDC
- Screw terminals

# TS-42

## Mounted Wall Buzzer



LA32 buzzer mounted on single gang wall plate

### Features

#### Standard Features

- Buzzer mounted on single gang wall plate with stainless steel finish
- Sound level 80db at 3ft

#### Options

- Finishes: multiple plate options available
- Custom screening available

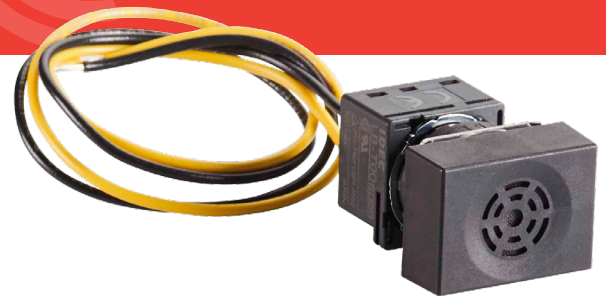
### Specifications

#### Electrical

- Current draw 25mA at 12VDC
- Terminated with 12" wire leads

# LA32

## Buzzer



LA32 buzzer can be mounted in 5/8" hole on a single gang wall plate

### Features

#### Standard Features

- Sound level 80 dB
- Buzzer mounts in 5/8" hole on single gang wall plate
- Removable contact blocks
- Bezel shaped head made of plastic

#### Options

- Available pre-mounted on a single gang wall plate (**TS-42**)
- Single gang wall plate available for self-mounting (**RP-23A**)

### Specifications

#### Dimensions

- Required mounting hole: 5/8"

#### Electrical

- Operates on 12 VDC
- Supplied with 12" wire leads

# SC628

Sonalert Buzzer



# PA100

Piezo Buzzer



Sonalert buzzer can be mounted in 1-1/8" hole on a single gang wall plate

Piezo buzzer can be mounted in 3/4" hole on a single gang wall plate

## Features

### Standard Features

- Sound level 68 to 80dB
- Medium sound level; Continuous tone
- Buzzer mounts in 1-1/8" hole on single gang wall plate

### Options

- Available pre-mounted on a single gang wall plate (**TS-41**)
- Single gang wall plate available for self-mounting (**RP-22**)
- **SCVC** Sonalert volume control

## Specifications

### Dimensions

- Required mounting hole: 1-1/8"

### Electrical

- Operates on 6 to 28 VDC
- Screw terminals

## Features

### Standard Features

- Sound level 90 dB
- Continuous tone
- Buzzer flange mounts in 3/4" hole on single gang wall plate

### Options

- Available pre-mounted on a narrow stile (**TS-34N**) or standard single gang wall plate (**TS-34**)
- Wall plates available for self-mounting: slimline (**RP-23SLIMLINE**), narrow stile (**TS-34NPO**), or standard single gang (**RP-23**)

## Specifications

### Dimensions

- Required mounting hole: 3/4"

### Electrical

- Operates on 3 - 24 VDC
- 12" red and black leads

# PA-200

Piezo Chime



Piezo chime can be mounted in 1-1/4" hole on a single gang wall plate

## Features

### Standard Features

- Sound level 80 to 85 dB
- Chime mounts in 1-1/4" hole on single gang wall plate
- Chime can be flange mounted

### Options

- Available pre-mounted on a single gang wall plate (**TS-43**)
- Single gang wall plate available for self-mounting (**RP-22E**)

## Specifications

### Dimensions

- Required mounting hole: 1-1/4"

### Electrical

- Operates on 12 -24 VDC
- Current draw 95mA at 12 VDC, 140mA at 24 VDC
- 6" red, blue, and black leads

# PA-300

Dual Tone Piezo Buzzer



Piezo buzzer with adjustable tone can be mounted in 3/4" hole on a single gang wall plate

## Features

### Standard Features

- Buzzer mounts
- Sound level 85db
- Continuous and slow pulse tone
- Buzzer mounts in 3/4" hole
- Bezel shaped case made of plastic

### Options

- Wall plates available for self-mounting: slimline (**RP-23SLIMLINE**), narrow stile (**TS-34NPO**), or standard single gang (**RP-23**)

## Specifications

### Dimensions

- Required mounting hole: 3/4"

### Electrical

- Operates on 3 to 24 VDC
- 6" red, yellow, and black leads

# AI-624

Audio Alert Indicator



Mechanical buzzer

## Features

### Standard Features

- Sound level 92dB
- Continuous tone
- Mounts in 1-1/4" hole on single gang wall plate
- Can be flange mounted

## Specifications

### Dimensions

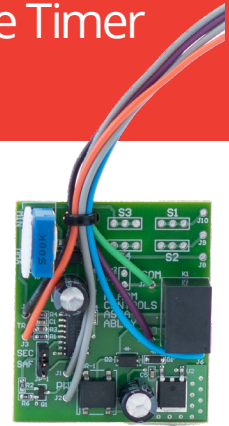
- Required mounting hole: 1-1/4"

### Electrical

- Operates on 20 - 28 VDC
- Supplied with wire leads

# MT-1

Mini Adjustable Timer



Indicating shunt switch with alternate action push button

## Features

### Standard Features

- Encapsulated for moisture protection
- Time setting adjustable from 2 to 45 seconds
- Mounts with adhesive foam tape
- Field selectable fail safe or fail secure

## Specifications

### Dimensions

- 2"H x 2"W x .5"D

### Electrical

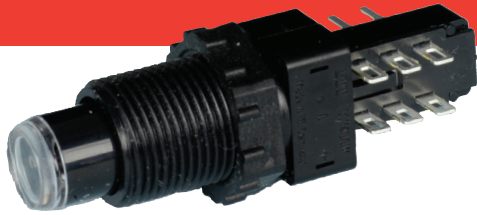
- N/O trigger 12 or 24 VDC
- SPDT contact rated 2A at 35 VDC or 125 VAC
- Current draw: 37mA max
- Relay operating mode: one shot

### Operating Temperature

- -13 to +158F [-25 to +70C]

# FA-200

Push Button Switch



Indicating shunt switch with alternate action push button

## Features

### Standard Features

- Alternate action push button can be field converted to momentary action
- Indicator changes to orange when depressed
- Provided with solder terminals; wired versions available
- Black plastic dress nut and lock nut
- Mounts in 9/16" hole

### Options

- **F-200(50)** additional pack of 50 switches
- Single gang wall plate available for self-mounting (**RP-44**)

## Specifications

### Electrical

- DPDT contacts rated 2A at 28 VDC

# 450

Push Button Switch



Flush ivory momentary action push button switch

## Features

### Standard Features

- Momentary push button switch
- Ivory flush mount
- Mounts in 5/8" hole

### Options

- **450(25)** additional pack of 25 push button switches
- Single gang wall plate available for self-mounting (**RP-100**)

## Specifications

### Electrical

- Contacts rated .5A at 35 VDC

# K-05

## Push Button Switch



Black momentary action push button switch

### Features

#### Standard Features

- N/C momentary black push button switch
- Mounts in 1/2" hole
- Provided with two nuts; additional dress nut available separately

#### Options

- **K-05(25)** additional pack of 25 switches
- 10C guard ring available separately
- Single gang wall plate available for self-mounting (**RP-100**)

### Specifications

#### Electrical

- N/C contacts rated .75A at 125 VDC
- 1/4" faston/solder terminals; 12" leads with faston terminals available

# K-13

## Push Button Switch



Red momentary action push button switch

### Features

#### Standard Features

- N/O momentary red push button switch
- Mounts in 1/2" hole
- Provided with two nuts; additional dress nut available separately

#### Options

- **K-13(25)** additional pack of 25 switches
- 10C guard ring available separately
- Single gang wall plate with available for self-mounting (**RP-100**)

### Specifications

#### Electrical

- N/O contacts rated .75A at 125 VDC
- 1/4" faston/solder terminals; 12" leads with faston terminals available

# LEDs



## 1/4" LEDs

- 1/4" lens with domed top and .280 black bezel
- LEDs mount in 1/4" hole
- Color options: green, yellow, bi-color, red flashing, blue, red
- LEDs have built-in resistor and operate on 12 or 24 VDC or VAC
- LEDs terminated with 6" x 20 gauge red and black leads
- Available individually or in packages of 10

MODEL	DESCRIPTION
LDG	Green
LDY	Yellow
LDR-B	Bi-color (red & green)
LDRF	Red flashing
LDB	Blue
LDR120	Red operated on 120VAC
LDG120	Green operated on 120VAC



## 1/2" LEDs

- 1/2" lens with raised cylinder and chrome bezel
- LEDs mount in 1/2" hole
- Color options: red, green, yellow, blue
- LEDs have built-in resistor and operate on 12 or 24 VDC or VAC
- LEDs terminated with 6" x 18 gauge red, white, and black leads
- Available individually (blue only) or in packages of 10

MODEL	DESCRIPTION
LDR-L	Red
LDG-L	Green
LDY-L	Yellow
LDB-L	Blue



ASSA ABLOY

## WARRANTY

Alarm Controls (“seller”) warrants its security equipment (“the product”) to be free from defects in materials and workmanship for the life of the product, unless expressly stated otherwise, under normal use and service. Digital Keypads and Passive Infrared Detectors have a three year warranty. Seller’s obligation is limited to repairing or replacing, at its option, free of charge for parts, labor, or transportation, any part proven to be defective in material or workmanship under normal use and service. Seller shall have no obligation under this warranty or otherwise if the product is altered or improperly repaired or serviced by anyone other than the Seller.

This limited warranty is in lieu of all other express warranties, obligations, or liabilities. There are no express warranties which extend beyond the face hereof. All implied warranties, obligations or liabilities made by Seller in connection with this product, including any implied warranty of merchantability, or fitness for a particular purpose or otherwise are limited to the stated warranty period. In no case shall the Seller be liable to anyone for any consequential or incidental damages for breach of this or any other warranty, express or implied, or upon any other basis of liability whatsoever, even if the loss or damage is caused by the Seller’s own negligence or fault.

Seller does not represent that the product may not be compromised or circumvented; that the product will prevent any personal injury or property loss by burglary, robbery, fire or otherwise; or that the product will in all cases provide adequate warning or protection. Buyer understands that a properly installed and maintained security system may only reduce the risk of burglary, robbery or fire occurring without providing an alarm, but it is not insurance or a guarantee that such will not occur or that there will be no personal injury or property loss as a result. Consequently, Seller shall have no liability for any personal injury, property damage or other loss based on a claim the product failed to give warning. However, if Seller is held liable, whether directly or indirectly, for any loss or damage arising under this limited warranty or otherwise, regardless of cause or origin, Seller’s maximum liability shall be the complete and exclusive remedy against Seller.

## TERMS & CONDITIONS

**PRICES:** All prices are subject to change without notice. Prices listed on the Alarm Controls website will serve as the most current list price. All shipments will be made at prices in effect at the time of order. The customer shall be responsible for payment of all applicable sales and/or use taxes and freight costs.

**MINIMUM ORDER:** Minimum product charge per invoice is \$150.00 USD.

**PAYMENT TERMS:** Net thirty (30) days from date of invoice. Interest at the rate of up to 1-1/2% per month may be charged on all past due accounts. An order received on an account which has not been paid within 45 days of the date of invoice may not be processed until the account is current. Custom orders may require a deposit.

**DELIVERY TERMS:** All prices are Ex-works factory. Purchaser assumes the risk of loss or damage to the goods while in transit from the point of shipment. Alarm Controls reserves the right to make delivery in installments. Installments shall be separately invoiced and paid for when due. Delay in delivery of an installment shall not relieve the purchaser of its obligation to accept remaining deliveries.

**FREIGHT POLICY:** All Purchase Orders received with a minimum net value of \$3,500 will qualify automatically for free standard freight within the continental United States. This minimum amount applies per Purchase Order to qualify and does not include free expedited freight. Qualified orders may ship partial or ship complete at your preference. Qualified orders that ship partial will not incur freight charges. All shipments that do not qualify for free freight will be charged for freight based upon our terms in effect at the time of shipment. Customers may provide their own carrier account number for expedited freight methods or for any Purchase Order to be used to cover freight costs. Minimum amounts are subject to change without notice.

**SHORTAGE:** Any claim for shortages must be made to Alarm Controls in writing within one (1) week of receipt of merchandise.

**WARRANTY RETURNS:** A Customer Care Form (CCF) for defective product must be obtained from Alarm Controls before any merchandise can be returned. CCF’s are valid for sixty (60) days from date of issuance. Goods returned under the terms of Alarm Controls Warranties may require a copy of the original invoice.

**RETURNS:** A Customer Care Form (CCF) must be obtained from Alarm Controls before any merchandise can be returned. CCF’s are valid for sixty (60) days from date of issuance. Items returned are subject to restocking fees.

**CANCELLATIONS:** Any order may be subject to a 5% cancellation charge for catalog items. Cancellation of non-catalog or custom items will be subject to a 20% cancellation charge plus all costs (both direct and indirect) incurred by manufacturing at the point of cancellation that are properly allocated to the cancelled item(s).

**LIMITATION OF LIABILITY:** Neither party will be liable to the other for any delay or failure in performance arising directly out of war, sabotage, insurrection, riot, and any other act of civil disobedience, act of public enemy, fire, explosion, flood, storm, or other act of God or nature, or similar cause beyond its reasonable control, including shortage or unavailability of labor or materials. If, notwithstanding the foregoing limitations, Alarm Controls has any liability to the purchaser, the purchaser agrees that the total liability to the purchaser for all losses, damages, and causes of action, whether in contract, equity, tort (including without limitation, negligence and gross negligence), or otherwise, will not exceed the amount the purchaser paid to Alarm Controls for the products (including, without limitation, incidental or consequential damages, damages for lost profits or business interruption, and punitive damages).

**NO THIRD PARTY LIABILITY:** If the purchaser uses the Alarm Controls Products on behalf of others or provides to others any products referenced herein, the Alarm Controls Parties shall have no liability to such persons whatsoever, and the purchaser agrees to defend and indemnify the Alarm Controls Parties from any and all claims and demands asserted against them, and from any legal fees, costs and other expenses that the Alarm Controls Parties incur therewith.

## TERMS & CONDITIONS *continued*

### EXPORT CONTROL AND SANCTIONS:

**1.1** The Customer represents and warrants to ASSA ABLOY ALARM CONTROLS that it will always act in compliance with Economic Sanctions and Export Control Laws, and that:

- a) neither the Customer, its affiliates, or any of their respective directors, officers, employees nor, so far as the Customer is aware, any agents or other persons acting on behalf of any of the foregoing:
  - I. is, or has been, a Listed Person;
  - II. has engaged in any business dealings or activities that would reasonably be expected to result in it becoming a Listed Person;
  - III. directly or indirectly, has conducted or is conducting any business dealings or activities with or for the benefit of, or is otherwise involved in any business with a Listed Person, or otherwise acting in violation of Economic Sanctions and Export Control Laws;
  - IV. has engaged or is engaging in any transaction that circumvents, evades or avoids, or has the purpose or effect of circumventing, evading or avoiding, or attempts to violate, any Economic Sanctions and Export Control Laws; or
  - V. is, or has been, in violation of, or subject to, any investigation or enquiry by, or on behalf of, any governmental or other regulatory body relating to Economic Sanctions and Export Control Laws.
- b) the Customer shall act in compliance with Economic Sanctions and Export Control Laws, and shall not sell nor re-export the Product without all requisite licenses and approvals under Economic Sanctions and Export Control Laws;
- c) the Customer shall not sell, export or re-export, the Product, directly or indirectly, to the Russian Federation or Belarus or for use in the Russian Federation or Belarus (whether or not permitted under Economic Sanctions and Export Control Laws applicable to the Customer);
- d) the Customer shall undertake its best efforts to ensure that the purpose of this Clause is not frustrated by any third parties further down the commercial chain, including by possible resellers;
- e) the Customer agrees to (i) cascade the contractual obligations set forth in this Section 1.1. in contracts with third parties, including possible resellers, further down the commercial chain.; and (ii) set up and maintain an adequate monitoring mechanism to detect conduct by any third parties further down the commercial chain, including by possible resellers, that would frustrate the purpose of this Section 1.1;
- f) the representations and warranties set forth in this Section 1.1 above shall always remain true and correct;
- g) the Customer will provide written notice to ASSA ABLOY ALARM CONTROLS as promptly as possible and in any event within five business days, if (i) any representation or warranty should cease to be true at any time., or (ii) the Customer should encounter any problems in applying paragraphs b)- e) in this Section 1.1 above, including any relevant activities by third parties that could frustrate the purpose of said paragraphs b)- e); and
- h) the Customer will not engage in any transaction for

Military End-Use unless explicitly approved in writing by ASSA ABLOY ALARM CONTROLS.

- i) The Customer will provide all information relating to requests for Products that the Customer suspects could violate or circumvent Economic Sanctions and Export Control Laws, including requests from or on behalf of a Listed Person, and other attempts to acquire ASSA ABLOY ALARM CONTROLS products in violation of Economic Sanctions and Export Control Laws. The Customer will, to the best of its abilities, cooperate with ASSA ABLOY ALARM CONTROLS to facilitate compliance with Economic Sanctions and Export Control Laws and will upon ASSA ABLOY ALARM CONTROL's request provide ASSA ABLOY ALARM CONTROLS with true, complete and correct copies of all documentation relating to any business dealings involving the Product, including but not limited to, end-user certifications, information concerning compliance with the obligations under above paragraphs b)- e) in this Section 1.1, and other information as may be required by ASSA ABLOY ALARM CONTROLS within two weeks of the simple request of such information.

**1.2** ASSA ABLOY ALARM CONTROLS shall not be obliged to make any payment or take any other action if ASSA ABLOY ALARM CONTROLS believes in good faith that such action may constitute a violation, contribute to a violation, or constitute a circumvention of any Economic Sanctions and Export Control Laws.

**1.3** This agreement may be terminated immediately by ASSA ABLOY ALARM CONTROLS by written notice to the Customer if:

- a) the Customer fails to provide any notice required under this Section 1.1 above, or should ASSA ABLOY ALARM CONTROLS determine, in its sole discretion, that any representation or warranty set forth in Section 1.1 above has failed to be true and correct at any time;
- b) the Customer has misrepresented or failed to properly disclose any material fact, or to provide any documentation, certifications or information requested by ASSA ABLOY ALARM CONTROLS; or,
- c) either party's ability to fulfil an obligation under this agreement is materially affected by the imposition of restrictions in Economic Sanctions and Export Control Laws.

**1.4** Upon any such termination, this agreement and all rights and obligations hereunder shall immediately terminate, provided that the Customer shall remain liable to ASSA ABLOY ALARM CONTROLS for any breach of its obligations hereunder.

**1.5** The Customer shall indemnify ASSA ABLOY ALARM CONTROLS and its affiliates, directors, officers, employees, advisors, agents and

## TERMS & CONDITIONS *continued*

---

holders of its equity interests (collectively, "Indemnitees") against, and shall hold each Indemnitee harmless from, any and all third party claims, damages and liabilities, including the reasonable fees, charges and disbursements of counsel, incurred by or asserted against any Indemnitee arising out of, in connection with, or as a result of (a) any representation or warranty set forth in Section 1.1 above not being true and correct when made, (b) any breach by the Supplier of any obligation under Section 1.1 or 1.2 above, or (c) any claim, litigation, investigation or proceeding relating to any of the foregoing, whether based on contract, tort or any other theory. This indemnity shall survive the termination of this agreement indefinitely.

For the purposes of this part of the agreement under the heading "Export Control and Sanctions",

**"Economic Sanctions and Export Control Laws"** means all economic sanctions and export control laws, regulations, rules or restrictive measures, including but not limited to import and export restrictions on materials, intellectual property, other intangible personal property, services, items and transactions, adopted and enforced by governmental authorities of Canada, the EU, UK, UN, USA or any other relevant governmental or regulatory authority, applicable to the ASSA ABLOY ALARM CONTROLS or the Customer.

**"Listed Person"** means individuals and entities listed, or parties that are determined to be owned or controlled by one or more individuals or entities listed, in Economic Sanctions and Export Control Laws.

### **Compliance with Anti-Trust, Anti-Corruption and Data Privacy Laws:**

The Customer, its directors, officers, and employees shall perform their obligations under these Terms and Conditions in full compliance with the ASSA ABLOY Code of Conduct which is accessible online at:

[Our Code of Conduct for business partners | ASSA ABLOY](#)

[Click this Link to Export Control and Sanctions for Canada](#)



Experience a safer  
and more open world





# ProductIndex

PRODUCT	PAGE #	PRODUCT	PAGE #	PRODUCT	PAGE #	PRODUCT	PAGE #
10C	N/S	AM6332	15	EB Series	26	LDR120	118
320S	3	AM6338	18	EL101	81	LDY	118
426	N/S	AM6360	16	EXP-1	55	LDYL	118
450	116	AM6361	16	EXP-2	55	LNB-6	11
450(25)	116	AM6370	18	EXP-15	55	LNB-6-SREX	11
600D	5	AM6370C	18	EXP-25	55	LNB-12	11
600DLB	5	AM6375	18	FA-200	116	LNB-12-SREX	11
600LB	4	APS-200	103	FA-200(50)	116	LUC	N/S
600S	4	APS-200FT	103	FT-1	N/S	LUCS	N/S
600WP	6	APS-2004C	103	FT-2	N/S	MCK Series	82
856LEDSM	28	CL-3	108	GBS-1	52	MP-20	62
1200D	8	CP Series	101	GDH	16	MP-21	62
1200DE	10	CP1 Series	*	GR	N/S	MP-26	62
1200LB	7	CP 1-MREX	*	JN-1	16	MP-26A	62
1200S	7	CP2 Series	*	JN-50	16	MP-28	63
1200WP	9	CP 3 Series	*	JP Series	58	MP-29	63
2405	81	CP4 Series	*	K-05	117	MP-30	63
30538	N/S	CY-1	83	K-05(25)	117	MP-31	63
30583	N/S	CY-1A	83	K-13	117	MP-44	63
AC25	108	DE-1	50	K-13(25)	117	MT-1	115
AC30	108	DE-1RED	50	KA-105	80	MTK-1	16
AES-100	91	DJ-1	15	KA-105A	117	NTB-1	54
AES-200	92	DL-1	106	KA-106	80	NTB-2	54
AES-300	93	DL-2	106	KA-106A	80	NTB-3	54
AI-624	115	DL-24	N/S	KA-107	80	NTS-1	53
AM3300	15	DL-30	N/S	KA-107A	80	NTS-2	53
AM3305	15	DL-36	N/S	KA-107ANC	80	NTS-3	53
AM3310	18	DL-48	N/S	KA-108	80	PA100	113
AM3315	18	DL-60	N/S	KA-108A	80	PA-200	113
AM3320	17	DL2EC	108	KA-109	81	PA-300	113
AM3320C	17	DL-2ELECTRO	106	KA-109A	81	PBL Series	24
AM3325	17	DTC Series	100	KA-110	81	PBM Series	25
AM3326	17	DUC-1B	15	KA-110A	81	PD Series	56
AM3330	15	DUC-1C	15	KA-111	81	PD4C	105
AM3331	15	DUC-2B	15	KA-111A	81	PDFT	104
AM3332	15	DUC-2C	15	KA-100A	86	PL910	80
AM3335	18	DUC-3B	15	KP-200	87	PL927	80
AM3335A	18	DUC-3C	15	KP-300	87	PN Series	56
AM3370	17	DUC-4B	15	KP-400	88	PS Series	56
AM3370C	18	DUC-4C	15	KR Series	22	PT Series	56
AM3375	18	DUC-5B	15	KR-1KEY	49	REB-1A	59
AM6300	15	DUC-5C	15	LA32	112	REB-1ADURO	59
AM6305	15	DUC-6B	15	LDB	118	RP-01	64
AM6310	18	DUC-6C	15	LDB-1	118	RP-01A	64
AM6320	17	DUC-7B	15	LDG	118	RP-01M	64
AM6320C	17	DUC-7C	15	LDG-L	118	RP-01MA	64
AM6325	17	DUC-8B	15	LDG120	118	RP-01SG	64
AM6326	17	DUC-8C	15	LDR-B	118	RP-02	64
AM6330	15	DUC-9B	15	LDRF	118	RP-02SS	64
AM6331	15	DUC-9C	15	LDR-L	118	RP-03	65

NOTES: \* = Custom Part N/S = Not Shown [Check Price List for full listing of available part numbers.](#)

PRODUCT	PAGE #	PRODUCT	PAGE #	PRODUCT	PAGE #	PRODUCT	PAGE #
RP-03A	65	RP-45	76	TS-3TD	31	TS-21R	38
RP-03M	65	RP-45SLIMLINE	76	TS-4	32	TS-25	51
RP-03MA	65	RP-46	76	TS-4-2	31	TS-26	51
RP-03SG	65	RP-46P/F/M	76	TS-4-2T	33	TS-27B	38
RP-04	65	RP-46P/F/MC	76	TS-4TD	33	TS-27R	38
RP-04L	65	RP-47	76	TS-5	34	TS-27T	38
RP-05	66	RP-48	76	TS-5-2	34	TS-32	23
RP-05SLIM	66	RP-49	77	TS-5-2T	35	TS-32B	23
RP-07	67	RP-49MOM	77	TS-5T	35	TS-32G	23
RP-08	67	RP-50	77	TS-5TD	35	TS-33	N/S
RP-09	68	RP-50M	77	TS-6	36	TS-34	112
RP-09L	68	RP-100	78	TS-6L	36	TS-36	40
RP-09LSLIMLINE	68	RP-100302	78	TS-6T	36	TS-36302	40
RP-09SLIMLINE	68	RP-100SLIM	78	TS-7	37	TS-41	111
RP-20	68	RPX Series	*	TS-7L	37	TS-42	112
RP-21	69	RT-1	110	TS-7T	37	TS-50	41
RP-22	69	RT-1T	110	TS-8	36	TS-50B	41
RP-23	70	RT-1TW	110	TS-8L	36	TS-50G	41
RP-23A	70	RT-3	110	TS-8T	36	TS-55G	94
RP-23SLIMLINE	70	RT-3R	110	TS-9	37	TS-55R	98
RP-24	70	SC628	113	TS-9L	37	TS-56G	99
RP-24SG	70	SF-117	N/S	TS-10	46	TS-56R	99
RP-25	70	SLP- _L Series	97	TS-10	46	TS-60	45
RP-26	71	SLP- _M Series	96	TS-10302	46	WP-4	N/S
RP-26A	71	SMB-01	N/S	TS-10T	46	WP-6	N/S
RP-26ASLIM	71	SMB-01A	N/S	TS-11	46	WPC	N/S
RP-26SLIM	71	SMB-3	N/S	TS-11T	46	ZP-4	N/S
RP-27	71	SMB-3D	N/S	TS-12	47	ZP-8	N/S
RP-27A	71	SPN Series	*	TS-12302	47		
RP-27ASLIM	71	SPX Series	*	TS-12T	47		
RP-27SLIM	71	SREX-100	58	TS-13	47		
RP-28	72	TS-1	27	TS-13T	47		
RP-28302	72	TS-1L	27	TS-14	42		
RP-28BI	72	TS-1R	27	TS-14302	42		
RP-28FLASHING	72	TS-2	28	TS-14N	42		
RP-28L	72	TS-2-2	28	TS-14NR	42		
RP-28L302	72	TS-2-2T	29	TS-14R	42		
RP-28SL	72	TS-2BLANK	28	TS-15	43		
RP-29	72	TS-2ENTER	28	TS-16	43		
RP-29L	72	TS-2R	28	TS-16302	43		
RP-29L302	72	TS-2T	29	TS-18	49		
RP-29LSLIMLINE	72	TS-2TBLANK	29	TS-18D	49		
RP-29SLIMLINE	72	TS-2TENTER	29	TS-19	49		
RP-30	73	TS-2TRED	29	TS-20	49		
RP-30L	73	TS-3	30	TS-20D	49		
RP-33	74	TS-3-2	30	TS-21B	38		
RP-33SLIM	74	TS-3-2T	31	TS-21G	38		
RP-35	75	TS-3BLANK	30	TS-21GPN	44		
RP-44	76	TS-3ENTER	30	TS-21RPN	44		
RP-44SLIM	76	TS-3T	31	TS-23	48		

NOTES: \* = Custom Part N/S = Not Shown Check Price List for full listing of available part numbers.



[alarmcontrols.com](http://alarmcontrols.com)



**ASSA ABLOY**

The ASSA ABLOY Group is the global leader in access solutions. Every day we help people feel safe, secure and experience a more open world.

[alarmcontrols.com](https://alarmcontrols.com)

## USA

(p) 800.645.5538 | (f) 631.586.6500 | [alarmcontrols.com](https://alarmcontrols.com)

[customerservice.alarmcontrols@assaabloy.com](mailto:customerservice.alarmcontrols@assaabloy.com)

[techsupport.alarmcontrols@assaabloy.com](mailto:techsupport.alarmcontrols@assaabloy.com)

### Custom Product Inquiries

[custom.alarmcontrols@assaabloy.com](mailto:custom.alarmcontrols@assaabloy.com)

## CANADA

(p) 800.461.3007 | (f) 800.461.8989 | [assaabloydss.ca](https://assaabloydss.ca)

### Customer Support in Canada

[sales.dss.ca@assaabloy.com](mailto:sales.dss.ca@assaabloy.com)

Printed in the U.S. A.

Patent pending and/or patent [www.assaabloydss.com/patents](https://www.assaabloydss.com/patents)

Copyright © 2025, Hanchett Entry Systems, Inc., an ASSA ABLOY Group company. All rights reserved. Reproduction in whole or in part without the express written permission of Hanchett Entry Systems, Inc. is prohibited. AC-044-0725