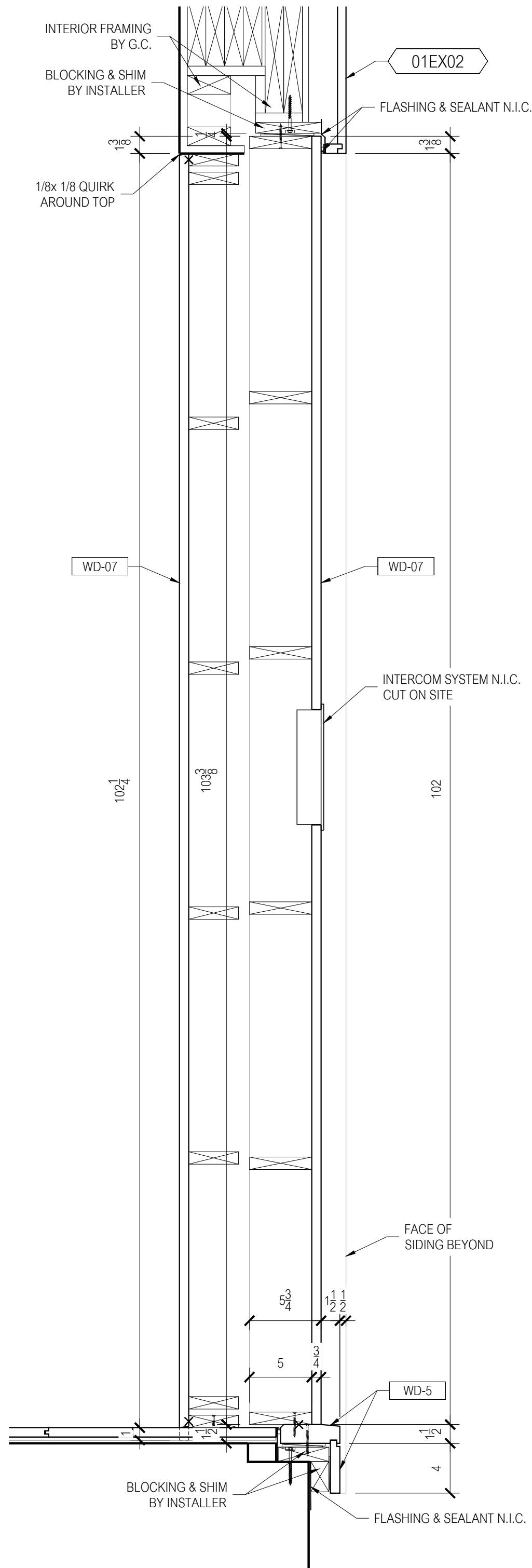
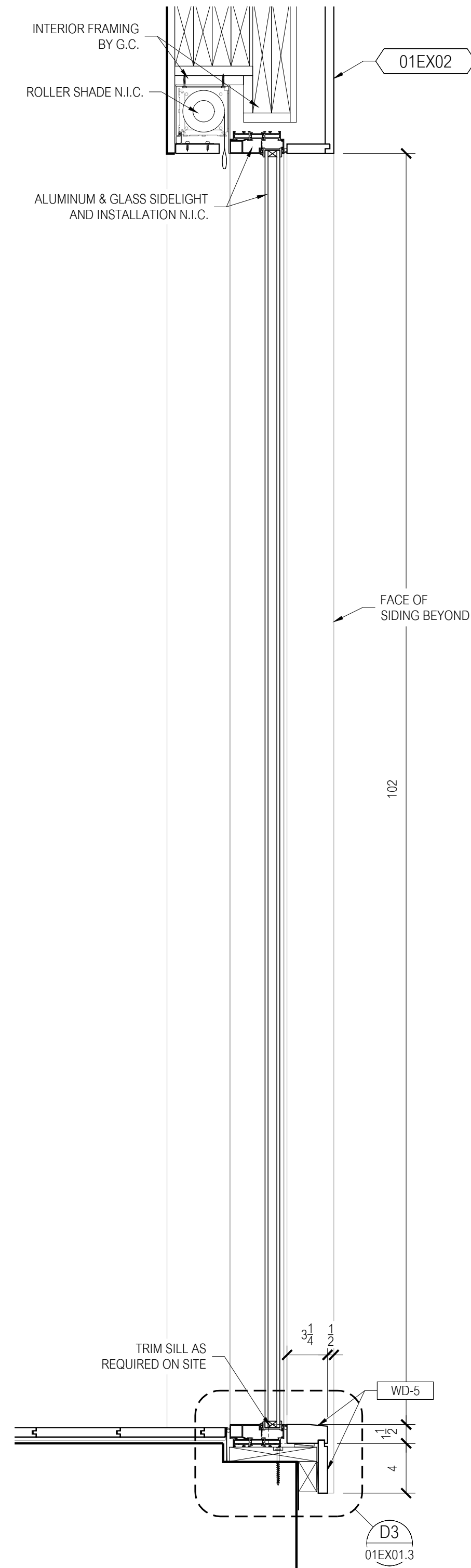


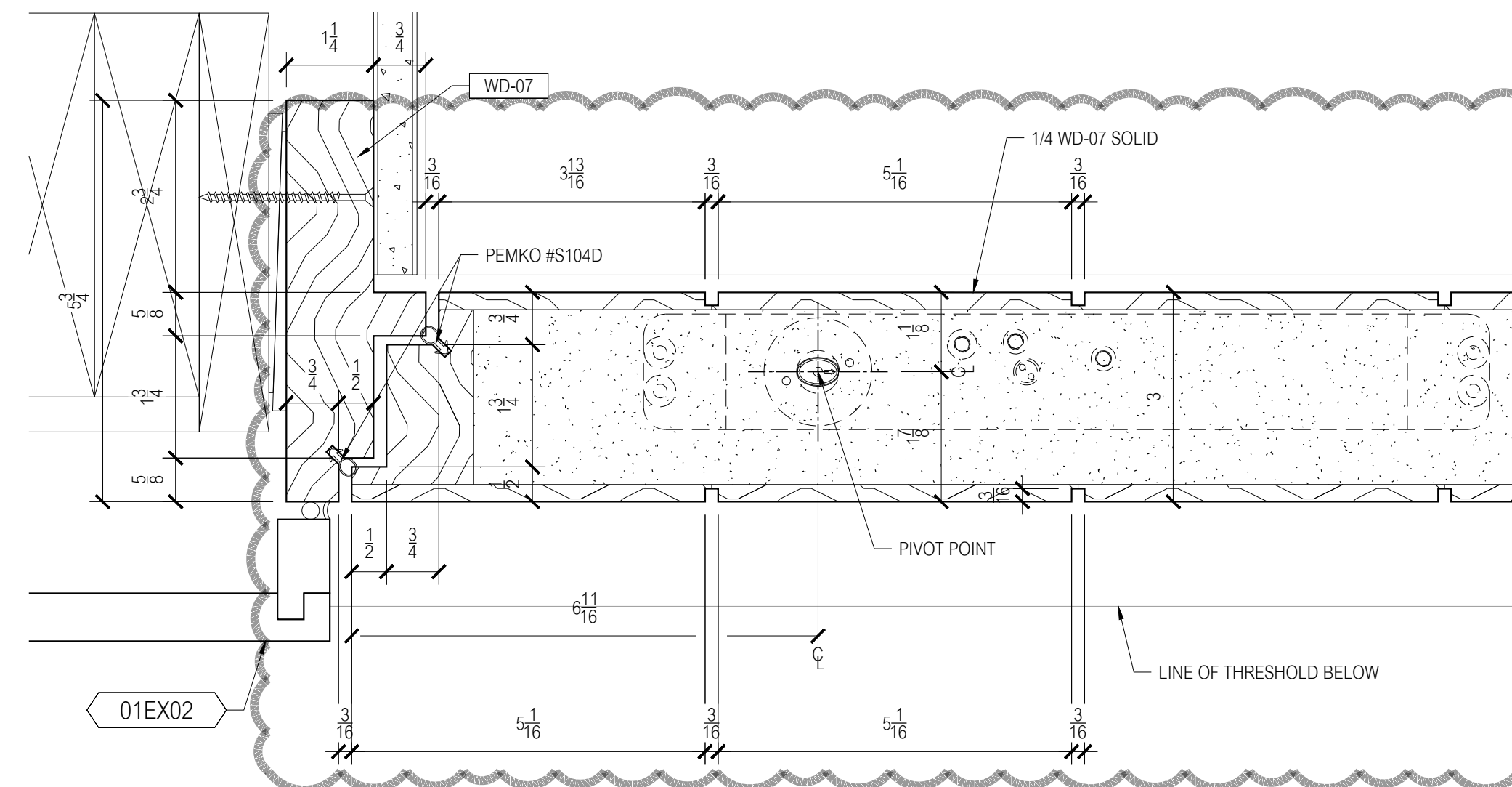
**A DOOR SECTION**  
1-1/2" = 1'-0"



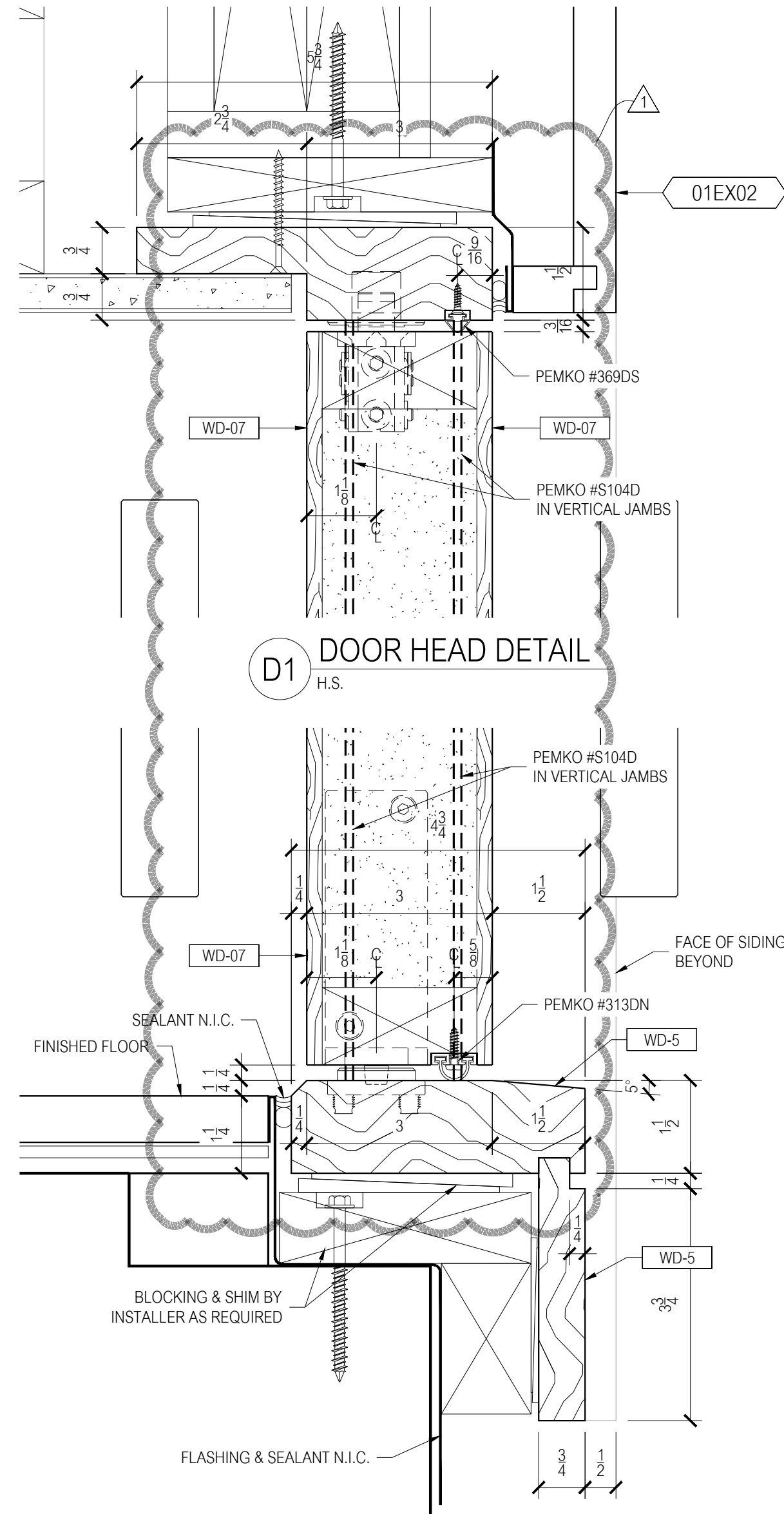
**B PANEL SECTION**  
1-1/2" = 1'-0"



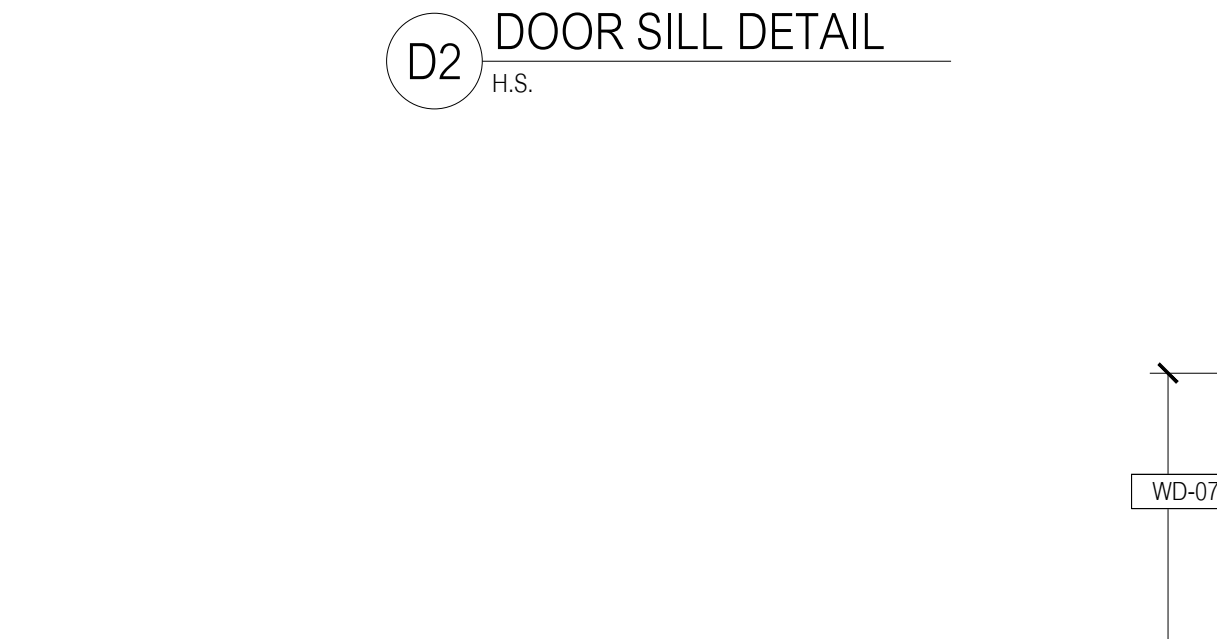
**C SIDELITE SECTION**  
1-1/2" = 1'-0"



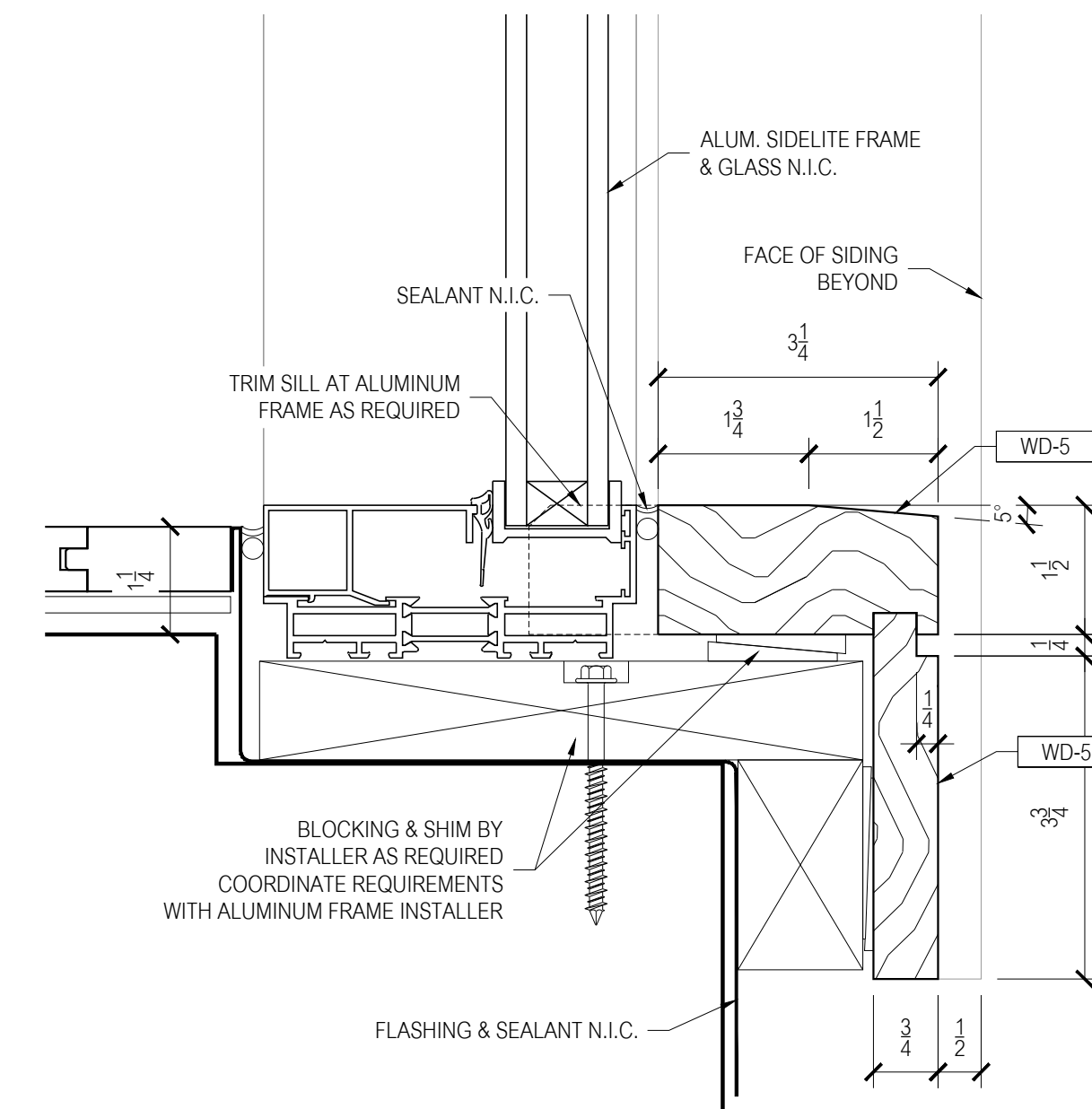
**D4 HINGE EDGE DETAIL**  
H.S.



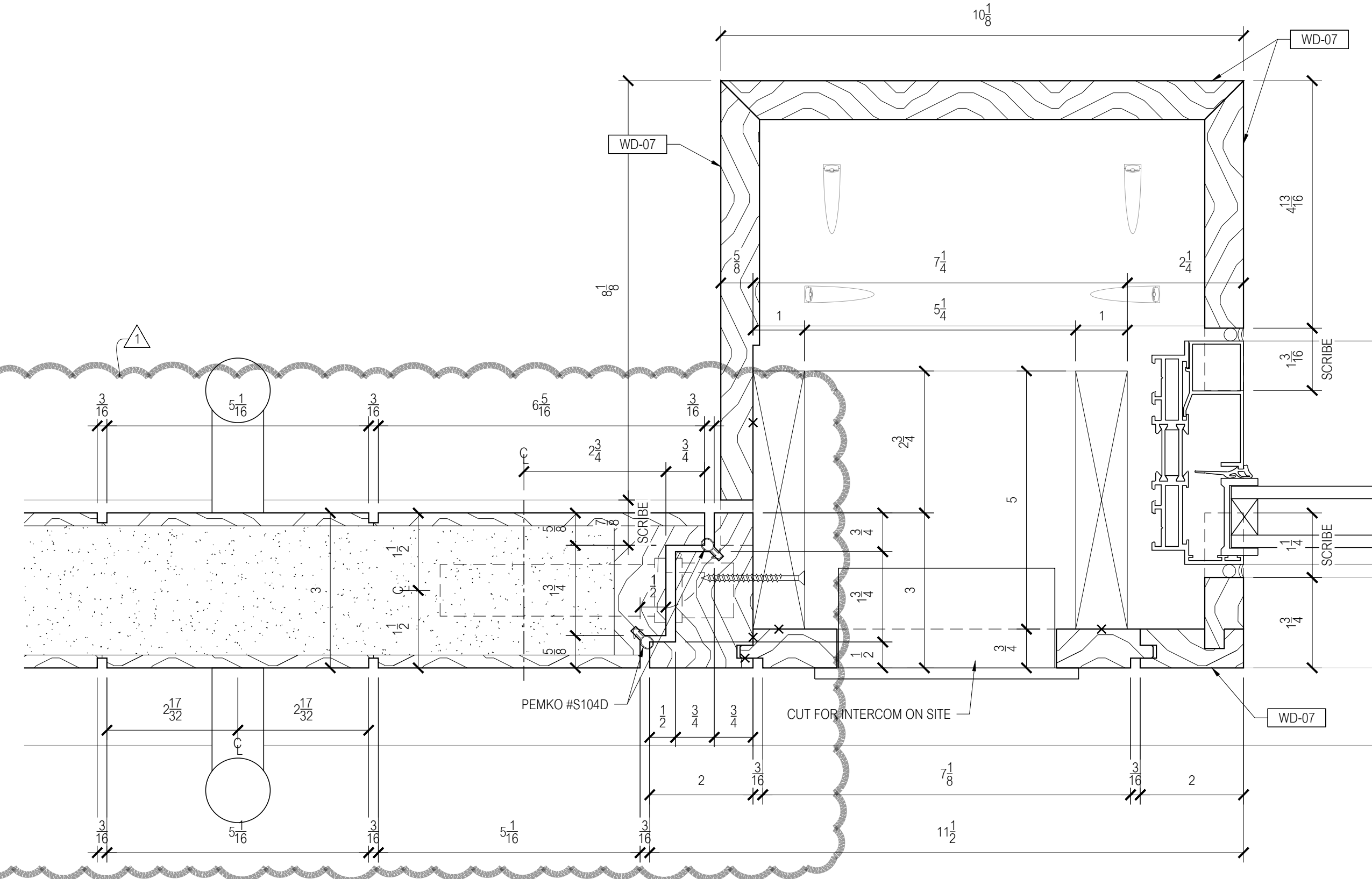
**D1 DOOR HEAD DETAIL**  
H.S.



**D2 DOOR SILL DETAIL**  
H.S.



**D3 SIDELITE SILL DETAIL**  
H.S.



**D5 LOCK EDGE DETAIL**  
H.S.

MILL NOTE:  
DOORS AND FRAMES ARE FOR EXTERIOR USE.  
ALL WOOD, ADHESIVES AND FASTENERS ARE  
TO BE WEATHER RESISTANT.

RELEASED~ REVISED TO CUTLIST: 31 JAN 2024

GlennRieder

Architectural Millwork & Custom Interior Finishes

6520 West Becher Place  
West Allis, WI 53219  
Phone 414.449.2888

glennrieder.com

AWI

© 2021 GLENN RIEDER, L.L.C. ALL RIGHTS RESERVED

UPON REVIEW OF THIS DRAWING, THE ARCHITECT/DESIGNER/OWNER OR THEIR AUTHORIZED REPRESENTATIVE (THE SENDER) HEREBY ACKNOWLEDGES, APPROVES AND ACCEPTS ITS CONTENT AS FULFILLING THE DESIGN INTENT OF THE PROJECT. ANY CHANGES OR MODIFICATIONS TO THE DESIGN/CONSTRUCTION PROCESS, MATERIALS, OR METHODS OF CONSTRUCTION MUST BE IN WRITING AND APPROVED BY THE SENDER. ANY CHANGES TO THE DESIGN/CONSTRUCTION PROCESS, MATERIALS, OR METHODS OF CONSTRUCTION MUST BE IN WRITING AND APPROVED BY THE SENDER. ANY CHANGES TO THE DESIGN/CONSTRUCTION PROCESS, MATERIALS, OR METHODS OF CONSTRUCTION MUST BE IN WRITING AND APPROVED BY THE SENDER.

OPEN ISSUES LIST (AT THE TIME OF SUBMITTAL)

INT	NAUF	REVISIONS	FSC	DATE
-	-	-	-	-
-	-	-	-	-
-	-	-	-	-
-	-	-	-	-
-	-	-	-	-
-	-	-	-	-
JRM	CHANGED FACES TO 1/4 WD-07 SOLID			01/31/24

FINISHES & MATERIALS	
WD-5	: P.S. TEAK TO MATCH INTERIOR FLOORING
WD-7	: MATCH APPROVED SAMPLE
WD-7	: P.S. TEAK VENEER & SOLID
WD-7	: MATCH APPROVED SAMPLE

INT	DRAWING STATUS	DATE
JRM	SUBMITTED FOR APPROVAL	07/12/23
JRM	UPDATED PER APPROVAL	08/14/23
JRM	UPDATED PER FM	08/14/23
BWB	RELEASED TO FIRST MTO	07/19/23
JRM	UPDATED PER MTO	08/14/23
JRM	RELEASED TO PIECE-BILLING	09/07/23
JRM	RELEASED FOR FABRICATION	

OPEN ISSUES:

Carmelina Apartments  
Los Angeles, CA

DRAWN BY  
JRM

DATE  
07/10/23

ARCH. REF.  
A5.21

JOB NUMBER  
22201

BUILD : GRI

PL : BEJ

AREA  
DWELLING 1 & 2

SHEET #  
01EX01.3