



ACCURATE

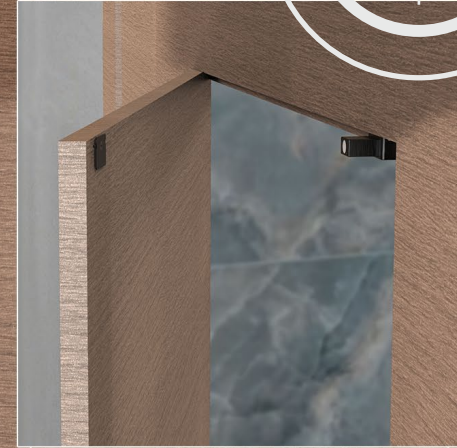
LOCK & HARDWARE

AMERICAN CRAFTED SINCE 1972

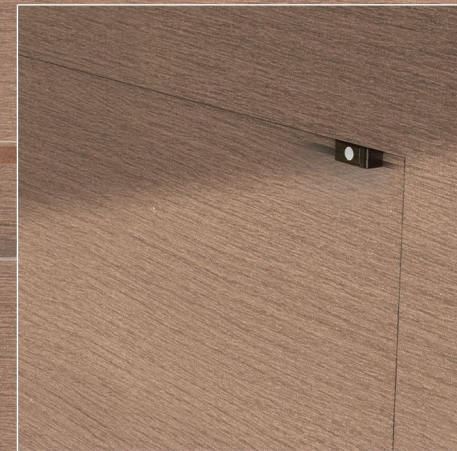
MAGNETIC TOUCH LATCH

MAGNETIC TOUCH LATCH

The **MTL23 Magnetic Touch Latch** is designed for spaces where clean lines and intentional design take priority. Offering smooth push-to-open functionality, it allows doors to open effortlessly without the need for visible hardware—perfect for modern interiors, concealed doors, and minimalist cabinetry. A strong magnetic hold keeps doors securely closed, even in environments where movement is a factor, such as boats or RVs. When opened, the latch responds with ease and confidence, making it well-suited for larger or heavier doors where standard touch latches may fall short.



DOOR OPEN



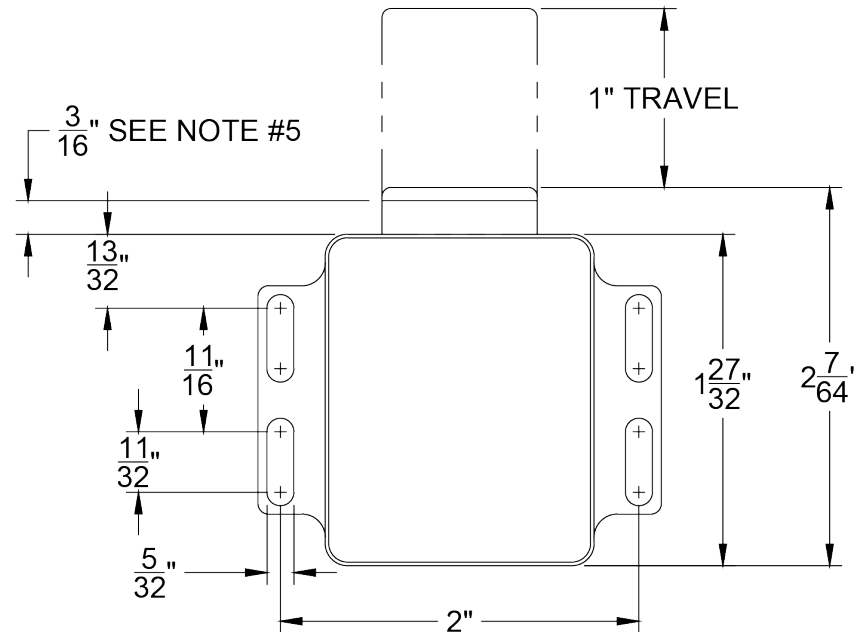
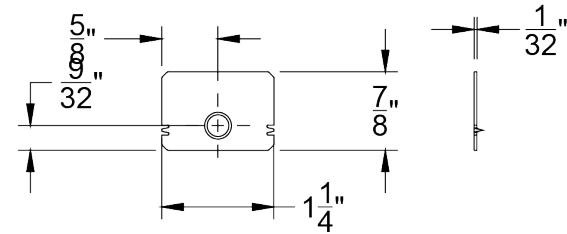
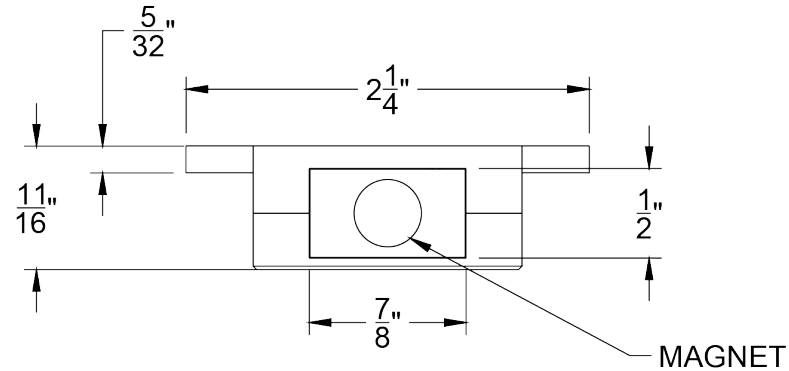
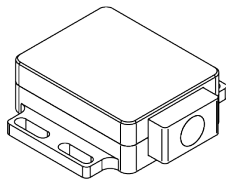
DOOR CLOSED

Magnetic Touch Latch

- Strong magnetic holding force for a secure, positive door closure
- Large 1" travel allows smooth engagement and reliable release
- High spring force delivers greater ease when opening
- Engineered to perform on larger or heavier doors than standard touch latch mechanisms



Magnetic Touch Latch Specifications



NOTES:

1. SPRING FORCE: 10 Lbs
2. MAGNETIC PULL: 6 Lbs
3. TRAVEL REQUIRED TO UNLOCK: .08"
4. INSTALL STRIKE PLATE WITH #6 FLAT HEAD SCREW, USE 4X #6 PAN HEAD SCREWS TO SECURE LATCH
5. A STOP BLOCK OR DOOR STOP MUST BE USED. LOCATE ³/₁₆" FORWARD OF LATCH, ADJUST LATCH LOCATION USING PROVIDED SLOTS.

HOW TO SPECIFY

MTL23.**FINISH**

FINISHES

US19 (standard)

US28

ESN

CVB

Other finishes may be available upon request.

To view example of finishes visit: [Accurate Finishes](#).

Note: Bolt will always be black plastic regardless of housing finish.

EXAMPLES

Magnetic Touch Latch | Satin Aluminum

E.g.: MTL23.**US28**

Magnetic Touch Latch | Electroless Nickel

E.g.: MTL23.**ESN**

Magnetic Touch Latch | Cerakote Vortex Bronze

E.g.: MTL23.**CVB**