

Baron Service Center (BSC) Program

Your one stop for service and value



Door Series

Baron Service Center's (BSC) complete line of steel doors for commercial, institutional and industrial applications satisfies your requirements durability, security, aesthetics or fire protection. Most popular sizes and configurations are stocked at your local ASSA ABLOY Service Center with many others available at factory lead-times.

Available Features:

- Gauge: 18 gauge cold rolled steel or galvalume
- Core: Honeycomb / Polystyrene
- Listing: 3 Hour fire rating (ITS/WHI) Mylar label
- Sizes: From 2'0" x 6'8" to 4'0" x 8'0"
- Options: Flush and 6-Panel designs
- Handed & Non-Handed available in many hardware locations with a wide range of service center installed options including glass lights, louvers, and hardware preps

Door Construction:

- Inverted Top and Bottom Channels for additional stability with flush top cap for added security and protection
- Interlocking Seam enhances structural rigidity and durability
- Beveled Lock Edge – the contractor's preference for easy field installation (handed doors)
- Non-handed - square hinge and lock edge
- Heavy Gauge Closer Reinforcement is standard in all doors
- Hinge reinforcements construction provides easy conversion from standard weight to heavy weight hinges

Code Compliance and Physical Performance:

- Level 'A' grade in tested in accordance with ANSI A250.4 test procedures
- Meets or exceeds ANSI/SDI A250.6

Listed for fire door installations requiring positive or negative pressure testing (UBC-7-2-97, UL10B, and UL 10C) in sizes to 4080 singles and 8080 pairs



Frame Series

Baron Service Center's (BSC) steel frames are manufactured to provide value to any job regardless of size. Our drywall frames are cold rolled steel. Standard for masonry frames are galvalume. Both are prime painted at the price you demand.

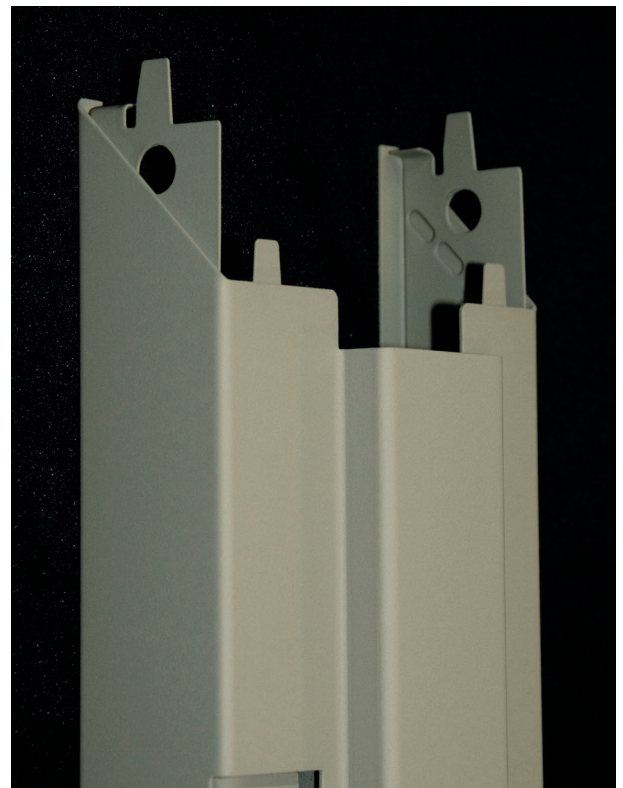
Available Features:

Gauge: 16 gauge
Profiles: Masonry-Standard Profile (galvalume)
Drywall - Cold Rolled Steel
Listing: 1-1/2 Hour rating - drywall (ITS/WHI)
3-Hour fire rating - masonry (ITS/WHI)

Frame Construction:

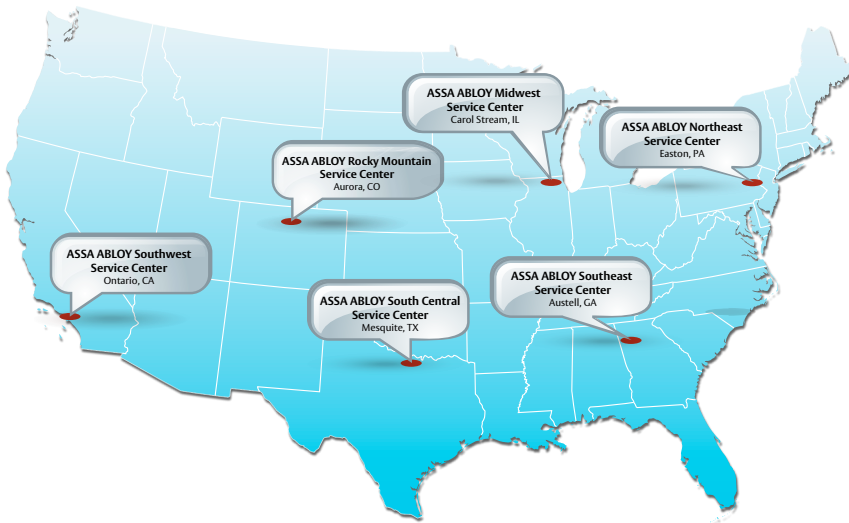
Depth: 4-1/2" to 9-1/2"
Sizes: 2'0" x 6'8" to 4'0" x 8'10"
Hardware Steelcraft
locations: Pioneer
others

- Refer to service center stock books for availability
- Knock Down for easy installation
- Service Center welding available if needed
- Available sizes vary by market and service center



The ASSA ABLOY Group is the global leader in access solutions. Every day, we help billions of people experience a more open world.

ASSA ABLOY Opening Solutions leads the development within door openings and products for access solutions in homes, businesses and institutions. Our offering includes doors, frames, door and window hardware, mechanical and smart locks, access control and service.



www.assaabloyservicecenters.us

ASSA ABLOY Service Centers with BSC Program

Midwest

235 East Lies Road
Carol Stream, IL 60188
Phone: 630-682-8800 Fax: 630-682-8803

Northeast

1000 Conroy Place
Easton, PA 18040
Phone: 610-559-2180 Fax: 610-559-2190

Rocky Mountain

3650 Fraser Street, Unit D
Aurora, CO 80011
Phone: 303-371-0847 Fax: 303-371-3023

South Central

1451 I-30 Frontage Rd.
Mesquite, TX 75150
Phone: 972-272-0271 Fax: 972-272-7829

Southeast

825 Riverside Parkway, Suite 100
Austell, GA 30168
Phone: 770-941-9012 Fax: 770-941-9123

Southwest

5678 Concoors Street
Ontario, CA 91764
Phone: (909) 593-2100 Fax: (909) 593-2500

