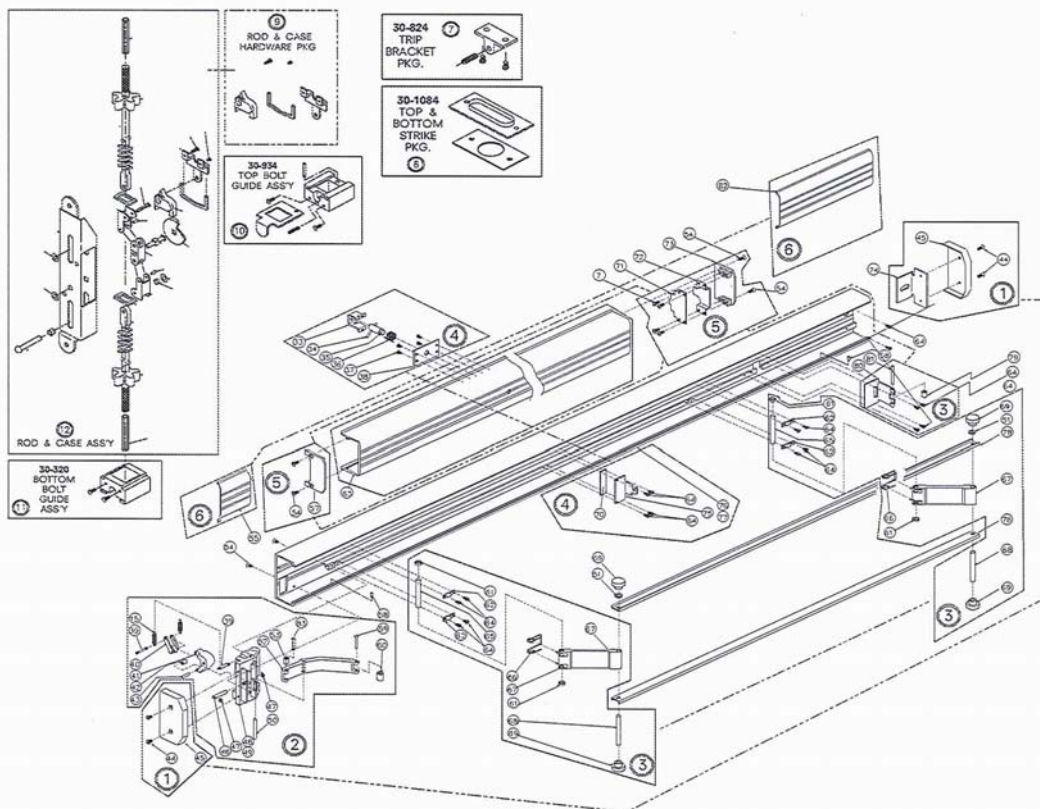


Instructions for Removing the Dogging Assembly From a Jackson 1285

Reference Drawing	Instructions
1	Remove each base cover
6	Remove each extruded cover On active side, remove (1) 8/32 x 1 cap screw (1) 12/24x1 1/4 phillister screw On the inactive side, remove a single 1/4 20 round head screw Panic is now free
2	Remove active lift assembly with single 6-32 screw
5	Remove each plastic cap from push bar, Slide push bar towards inactive side until 2 rollers are exposed.
3	Remove each roller Remove push bar by sliding it toward active side
4	Remove 4ea. 4-40 screws Replace dogging assembly

Page 9

CLICK HERE TO RETURN TO TABLE OF CONTENTS



1285 CONCEALED VERTICAL ROD

jackson

***Instructions for Removing the Dogging Assembly
From a Jackson 1285***

