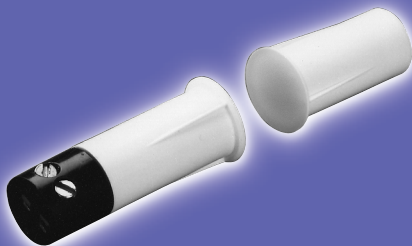




## GE Magnetic Contacts

### 1125T Series

*3/8" Diameter Stubby Recessed*



<b>Gap Distance</b>	<b>Closed Loop</b>
<i>Regular 3/8"</i>	<i>1125T</i>
<i>Wide 3/4"</i>	<i>1125TW</i>

<b>Color</b>	<i>White, Mahogany</i>
<b>Quantity</b>	<i>10</i>

100% **TESTED**



604S  
Connectors and Switches

**1125TW-N**



0 46188 07013 8

# 1125T Series

## 3/8" Diameter Stubby Recessed with Terminals

### Installation Instructions

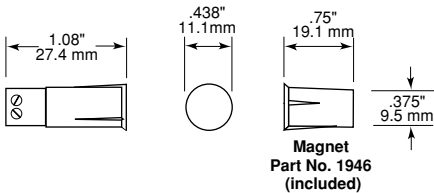
#### Drill Mounting in Wood

Drill 3/8" diameter holes 1" deep for the contact and 3/4" deep for the magnet (1 1/4" deep for the 1125TW magnets). Strip wire from security system loop, insert into terminal block and tighten. Test for continuity. Press them into their respective holes.

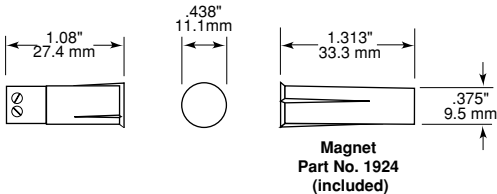
#### Mounting in Aluminum Sliding Windows and Doors

Do not overdrill. Attach contact and magnet with RTV mounting compound or epoxy.

1125T



1125TW



### UL Specifications

Part Number	Loop Type	Electrical Configuration	Gap Distance (Nominal/Min. make/Max. break)*
1125T	Closed	N.O.	3/8" / 1/4" / 1"
1125TW	Closed	N.O.	3/4" / 1/2" / 2"

\*\* European Union Specifications: 48 V AC/DC max, 0.5 Amp

#### \*\* FORM A (1125T, 1125TW)

Voltage: 100 V AC/DC max

Current: 0.5 A max

Power: 7.5 W max

WARNING: Each electrical rating is an individual maximum and cannot be exceeded!

### C-UL Specifications

All Contacts: 30 VDC, 50 mA max

Gap Specifications:\*  
See UL Gap Specifications



GE Interlogix

www.GE-Interlogix.com

12345 SW Leveton Drive  
Tualatin, OR 97062  
Phone: 503-692-4052  
USA & Canada: 800-547-2556  
Technical Service: 800-648-7424  
Faxback: 800-483-2495

2266 Second Street North  
North St. Paul, MN 55109  
Phone: 651-777-2690  
USA & Canada: 800-777-5484  
Technical Service: 800-777-2624