

MAKE OF CYLINDER	RECOMMENDED
YALE	YALE # 1161-L
CORBIN	MS-4800
RUSSWIN	MS-4800
SCHLAGE	SCHLAGE 8-502-292
ILCO	4002-2R (LOCKWOOD)
ADAMS RITE	MS-1850
SARGENT	47-40-101

NOTE: WHEN NOT USING MORTISE CYLINDER, PROCEED WITH THE FOLLOWING:

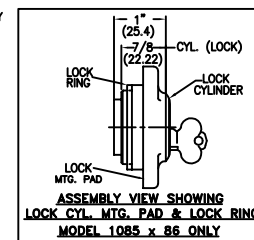
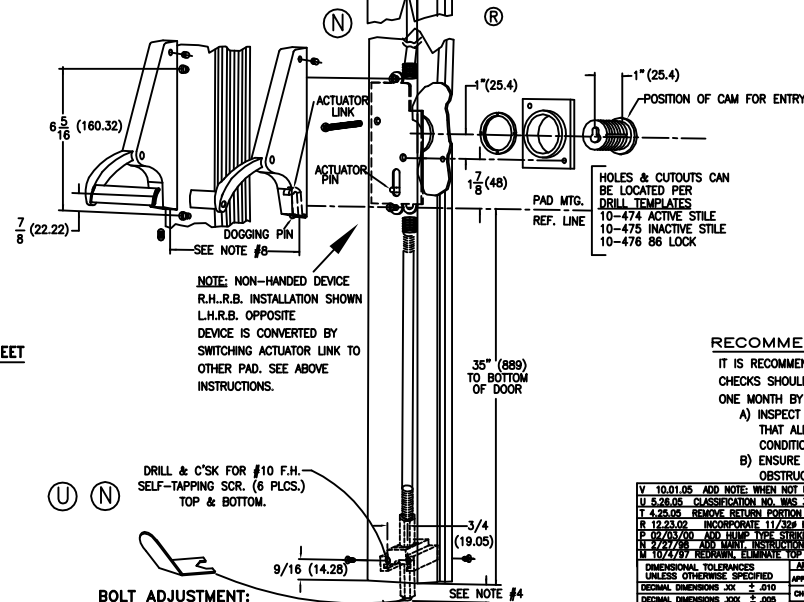
1. START BY REMOVING BRACKET (A),
2. NEXT REMOVE DOGGING PAWL (B)
3. FINALIZE BY RE-ATTACHING BRACKET (A)

MOUNTING INSTRUCTIONS

1. DETERMINE HAND OF DOOR, THEN PREPARE STILES PER TEMPLATES:
10-474 DRILL TEMPLATE FOR ACTIVE STILE.
10-475 DRILL TEMPLATE FOR INACTIVE STILE.
2. IF LOCK IS TO BE USED, PREPARE ACTIVE STILE PER TEMPLATE 10-476.
3. INSTALL ROD & CASE ASSY INTO ACTIVE STILE AND SECURE WITH TWO 1/4-20 (M6-1.0) SHOULDER STUDS. (IF USING LOCK, PERFORM INST. 5 & 6 NEXT.)
4. PLACE ACTIVE PAD OF STILE MAKING CERTAIN THAT ACTUATOR LINK IS PROPERLY ENGAGED (UNDERSIDE OF PIN) TO MECHANISM AND SECURE PAD. ADJUST BOLTS BY SCREWING IN OR OUT TILL TOP OF BOLT IS FLUSH WITH EDGE OF DOOR, WHEN THE PUSH BAR IS FULLY DEPRESSSED. THEN INSTALL BOLT GUIDES WITH SIX #10 x 1/2 F.H. SELF TAPPING SCREWS.
5. INSERT LOCK CYLINDER INTO LOCK MOUNTING PAD AND SECURE WITH LOCK RING PROVIDED. MAKE SURE CYLINDER AND LOCK MOUNTING PAD ARE INSTALLED AS SHOWN.
SECURE WITH 2 EA. 8-32 x 1-15/16 FHMS.

THE SAFETY FEATURES OF THIS PRODUCT ARE ESSENTIAL TO IT'S COMPLIANCE WITH EN 1125. NO MODIFICATION OF ANY KIND, OTHER THAN THOSE DESCRIBED IN THESE INSTRUCTIONS, ARE PERMITTED.

NOTE:
THIS PRODUCT IS DESIGNED AND MFRG. TO MEET
CLASSIFICATION NO. 37601321A,
EN1125 STANDARD.



RECOMMENDATIONS FOR MAINTENANCE:

IT IS RECOMMENDED THAT THE FOLLOWING ROUTINE MAINTENANCE CHECKS SHOULD BE TAKEN AT INTERVALS OF NOT MORE THAN ONE MONTH BY THE OCCUPIER OR HIS APPROVED REPRESENTATIVE:

- A) INSPECT AND OPERATE THE PANIC DEVICE TO ENSURE THAT ALL COMPONENTS ARE IN A SATISFACTORY WORKING CONDITION.
- B) ENSURE THAT THE KEEPER(S) IS (ARE) FREE FROM OBSTRUCTION.

V 10.01.05 ADD NOTE: WHEN NOT USING MORTISE CYLINDER: ECH1863 RM	U 5.26.05 CLASSIFICATION NO. MS 36501321A ECH1841 RM
T 4.23.05 REMOVE RETURN PORTION SHOWN ON TOP STRIKE ECH1834 RM	R 12.23.02 INCORPORATE 11/32" HOLE FOR LOCK PAD ECH1844 RM
P 02/15/00 ADD HUMP TYPE STRIKE ECH1838 RM	N 2/27/98 AND MOUNT INSTRUCTIONS ECH1143 RM
10/24/97 REPAIRING ELIMINATE TOP & BOLT HOLE FOR ADJUSTMENT (BOLT GUIDE) ECH1108 RM	
DIMENSIONAL TOLERANCES UNLESS OTHERWISE SPECIFIED APPROVED DATE	CHECKED DATE
DECIMAL DIMENSIONS JOK ± .010	APPROVED DATE
ANGULAR DIMENSIONS JOK ± .005	APPROVED DATE
ANGULAR ± .01 FRACTIONAL ± 1/64	APPROVED DATE
FILE NO. MATERIAL SCALE	SCALE NONE
NEXT ASSY. FINISH	INSTALLATION GUIDE
QTY. USED 1 HEAT TREAT	1085 & 1085x86 PANIC DEVICES
	3447 UNION PACIFIC AVE. LOS ANGELES, CALIF. 90003
	DWG. NO. 10-473

PATENT NO 3.993.335

FLAT "BOTTOM STRIKE" USED ON THRESHOLD ONLY.