

SD-9 2010

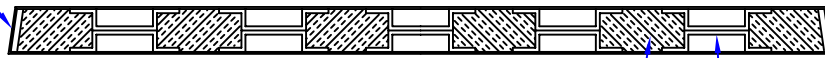


07WE Series

WELDED EDGE STEEL STIFFENED DOORS

1 3/4" Doors

SEAM IS CONTINUOUSLY WELDED
EDGES BEVELED 1/8" IN 2"



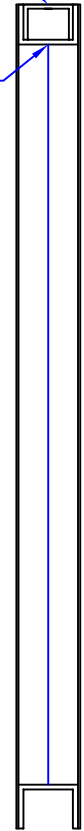
TOP VIEW (SECTION B-B)

0.6# DENSITY INSULATION BETWEEN STIFFENERS

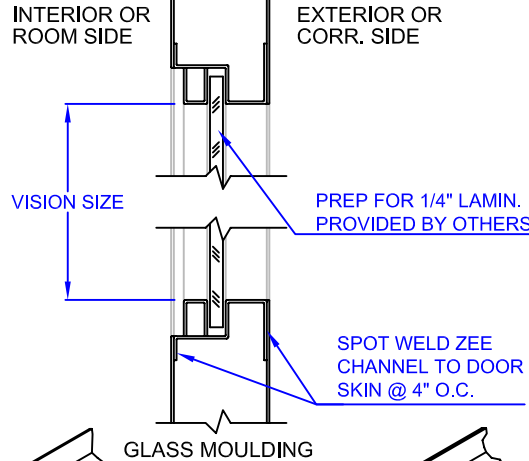
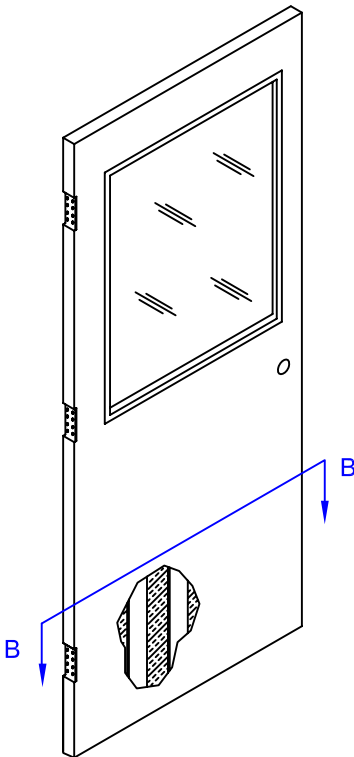
22 GA. STIFFENERS
6" MAX APART

OPTIONAL TOP CAP

16 GA. CHANNEL



VERTICAL SECTION



INTERIOR OR ROOM SIDE

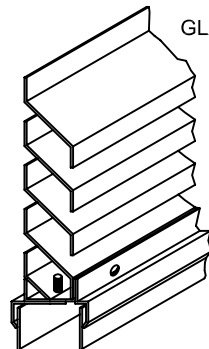
EXTERIOR OR CORR. SIDE

VISION SIZE

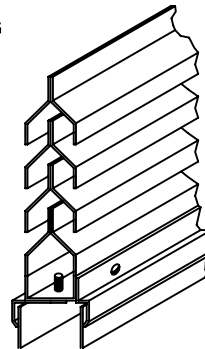
PREP FOR 1/4" LAMIN.
PROVIDED BY OTHERS

SPOT WELD ZEE
CHANNEL TO DOOR
SKIN @ 4" O.C.

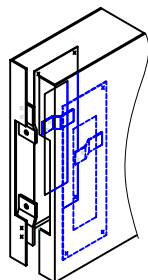
GLASS MOULDING



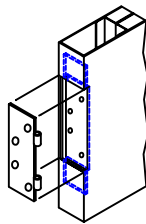
"Z" BLADE LOUVER



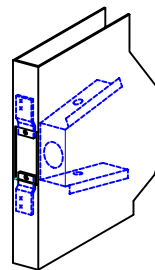
"Y" BLADE LOUVER



ANSI/BHMA A156.115
"Y" (MORTISE)



HANDED HINGE
PREPARATION



ANSI/BHMA A156.115
"D" (CYLINDRICAL)

TYPICAL HARDWARE PREPARATIONS

