

# 2018 Asian Games Sailing Competition

## 20-31 August 2018

### Jakarta, Indonesia

The Organising Authority (OA) is the Indonesia 18<sup>th</sup> Asian Games Organising Committee (INASGOC) with the support of the Olympic Council of Asia (OCA) and the Asian Sailing Federation (ASAF).

## SAILING INSTRUCTIONS

### 1 RULES

- 1.1 The competition will be governed by the rules as defined in *The Racing Rules of Sailing (RRS)*. Other documents under RRS Definition, Rule (g) include:
  - 1.1.1 [DP] The 2018 Asian Games Equipment Regulations (ER).
  - 1.1.2 [DP] The Olympic Council of Asia (OCA) constitution, rules and its by-laws will apply.
  - 1.1.3 The RS:One Mixed Team Relay Racing Experimental Sailing Instructions (ESI) will apply.
- 1.2 No national prescriptions will apply.
- 1.3 In all rules governing this competition;
  - 1.3.1 Both “athlete” and “competitor” mean a person competing or intending to compete in the competition.
  - 1.3.2 [DP] denotes a rule for which the penalty is applied according to the RRS Introduction – Notation.
  - 1.3.3 [SP] denotes a rule for which a standard penalty may be applied by the Race Committee without a hearing or a discretionary penalty applied by the Jury with a hearing. This changes RRS 63.1 and A5.
  - 1.3.4 [NP] denotes a rule that shall not be grounds for protests by a boat. This changes RRS 60.1(a).
- 1.4 Class rules regarding class association membership and its championship rules will not apply.
- 1.5 If there is a conflict between languages the English text will take precedence.

### 2 NOTICES TO COMPETITORS

- 2.1 Notices to competitors will be posted on the Official Notice Board located at the ground floor of the main administrative building.
- 2.2 Notices will also be posted on the online notice board that may be found via the competition microsite at <https://www.indonesiansailing.org/asian-games-2018>. Failure to access a notice on the competition website will not be grounds for redress. This changes RRS 62.1(a).

### 3 CHANGES TO SAILING INSTRUCTIONS

Any change to the Sailing Instructions will be posted no later than two hours before the scheduled time of the first race affected, except that any change to the schedule of races will be posted no later than 30 minutes after the end of the latest protest time limit on the day before it will take effect.

### 4 SIGNALS MADE ASHORE

- 4.1 Signals made ashore will be displayed on the official flagstaff located adjacent to the launching ramp.

- 4.2 Add to the Race Signals preamble the following, “When a visual signal is displayed over a racing area or event flag, the signal applies to that racing area or event only.” Racing area flags will be a black letter A, B, C or D on a yellow background as shown in SI 21.
- 4.3 When flag AP is displayed ashore, “1 minute” in RRS Race Signals AP is replaced with the time in minutes shown below:

<i>Racing Area</i>	<i>Not less than</i>
Alpha (A) and Delta (D)	60 minutes
Bravo (B) and Charlie (C)	45 minutes

- 4.4 [SP][NP] A boat shall not leave its designated place in the boat park until flag D is displayed ashore. The warning signal will be made not less than the time in minutes shown below after flag D is displayed or not before the scheduled time, whichever is later.

<i>Racing Area</i>	<i>Warning signal not less than</i>
Alpha (A) and Delta (D)	60 minutes
Bravo (B) and Charlie (C)	45 minutes

## 5 FORMAT AND SCHEDULE OF RACES

- 5.1 12 races are scheduled for all events except for the skiff and board events in which 15 races are scheduled.
- 5.2 The competition will consist of a single series of fleet races for all sailing events except for the RS:One (Mixed Team) event, which will comprise of 11 fleet races and 4 relay races.
- 5.3 The provisional race schedule, including the time of the first warning signals is shown in SI Addendum C. Coaches and Team Leaders meeting will be held at the ground floor of the main administrative building beginning at the times stated in Addendum C. An update to Addendum C will be made in accordance with SI 3.
- 5.4 The schedule for the RS:One (Mixed Team) relay races will be posted in accordance with SI 5.3.
- 5.5 To alert boats that a race or sequence of races will begin soon, the orange starting line flag will be displayed with one sound at least five minutes before a warning signal is made.
- 5.6 On the last scheduled day of racing, no warning signal will be made after **1400h.**

## 6 EVENT FLAGS

The event flags will be as follows:

<i>Event</i>	<i>Description</i>	<i>Background Colour</i>
Laser 4.7 (Open)	Laser class insignia (Red)	Yellow
Laser Radial	Laser class insignia (Red)	Green
Laser Standard	Laser class insignia (Red)	White
49er	49er class insignia (Red)	White
49erFX	49erFX class insignia	Light Blue
470 (Male)	470 class insignia (Blue)	White
470 (Female)	470 class insignia (Blue)	Light Blue
RS:X (Male)	RS:X class insignia (Black)	White
RS:X (Female)	RS:X class insignia (Black)	Light Blue

RS:One (Mixed Team)	RS:One (Male)	RS:One class insignia	White
	RS:One (Female)	RS:One class insignia	Light Blue

## 7 RACING AREAS

7.1 The racing area will be on the waters outside of Ancol Seafront. SI Addendum A shows the location of the racing areas.

7.2 Racing areas for events are as follows:

<i>Area A</i>	<i>Area B</i>	<i>Area C</i>	<i>Area D</i>
49er	Laser Standard	RS:X (Male)	470 (Male)
49erFX	Laser Radial	RS:X (Female)	470 (Female)
	Laser 4.7 (Open)	RS:One (Mixed Team)	

7.3 Changes to racing area assignments will be posted;

7.3.1 No later than two hours before the scheduled time of the first race affected, or

7.3.2 When flag AP is displayed ashore, 30 minutes before flag AP for that event is removed, or

7.3.3 When flag AP is displayed afloat, the racing area may be changed. A Race Committee vessel will display flag L over the event(s) flag and move to the new racing area.

7.4 The racing area for the RS:One (Mixed Team) relay races will be near the northern side of the floating breakwaters or pontoons.

## 8 THE COURSES

8.1 The diagrams in SI Addendum B show the courses, including the approximate angles between legs, the order in which marks are to be passed, and the side on which each mark is to be left.

8.2 No later than the warning signal, the Race Committee starting vessel will display a board designating the course to be sailed and, except for the windsurfing events, the approximate compass bearing of the first leg.

8.3 Courses will not be shortened. This changes RRS 32.

## 9 MARKS

9.1 Mark 1 for the 49erFX will be an orange cylindrical buoy. The new mark 1 for the 49erFX will be an orange cylindrical buoy with a black band.

9.2 Marks will be as follows:

<i>Area</i>	<i>Marks 1, 2, 3S/3P, 4S/4P</i>	<i>New Mark (for Mark 1 and/or 2 only)</i>
<b>A</b>	Yellow truncated conical buoy	Yellow truncated conical buoy with black band
<b>B</b>	Red truncated conical buoy	Orange cylindrical buoy
<b>C</b>	Light-Green truncated conical buoy	Blue cylindrical buoy
<b>D</b>	Orange truncated conical buoy	Red cylindrical buoy

9.3 The starting marks will be Race Committee vessels.

9.4 The finishing marks will be Race Committee vessels or blue teardrop buoys.

9.5 A gate may be replaced by a single mark to be left to port.

## 10 THE START

10.1 The starting line will be between staffs displaying orange flags on the starting marks.

- 10.2 [DP][NP] Boats whose warning signal has not been made shall avoid the starting area during the starting sequence for other races and shall stay 100 metres away from boats that are starting or manoeuvring around the starting area to prepare for the start.
- 10.3 A boat that does not start within 4 minutes after her starting signal will be scored Did Not Start (DNS) without a hearing. This changes RRS A4 and A5.
- 10.4 For the RS:One (Mixed Team) fleet races, the RS:One (Male) and RS:One (Female) will start separately.

**11 CHANGE OF THE NEXT LEG OF THE COURSE**

To change the next leg of the course, the Race Committee will (a) lay a new mark and remove the original mark as soon as practicable, or (b) move the finishing line to a new position, or (c) move the leeward gate marks. When in a subsequent change a new mark is replaced, it will be replaced by an original mark.

**12 THE FINISH**

- 12.1 The finishing line will be between a staff displaying an orange flag on the Race Committee vessel and either;
  - 12.1.1 the course side of the nearby finishing line mark, or
  - 12.1.2 a staff displaying an orange flag on the nearby Race Committee vessel.
- 12.2 [DP] When boats are finishing, boats who have finished shall avoid the finishing area, keeping well clear of all boats racing, and shall not act to interfere with a boat that has not finished.

**13 PENALTY SYSTEM**

- 13.1 RRS Appendix P will apply as changed by SIs 13.2.
- 13.2 For the skiff classes, RRS 44.1 and RRS P2.1 are changed so that the Two-Turns Penalty is replaced by the One-Turn Penalty.
- 13.3 Penalties for breaches of rules marked [SP] will be 1 point for each infringement. The Race Committee may protest a boat when they consider the standard penalty to be inappropriate. A boat that has been penalised with a standard penalty can neither be protested for the same incident by another boat nor can another boat request redress for this Race Committee action. This changes RRS 60.1, 63.1 and Appendix A5. See SI 16.4 for the scoring procedures of the [SP].

**14 TIME LIMITS AND TARGET TIMES**

- 14.1 The time limits and target times in minutes are as follows:

<i>Event</i>	<i>Time limit</i>	<i>Mark 1 time limit</i>	<i>Finishing window</i>	<i>Target time</i>
Laser Standard, Laser Radial, Laser 4.7 (Open)	75	25	15	50
470(M), 470 (W)	75	25	15	45
49ER, 49FX	50	20	15	30
RS:X(M), RS:X(W), RS1(Mixed Team) fleet racing	45	20	10	20-25

- 14.2 If no boat has passed Mark 1 within the Mark 1 time limit the race will be abandoned.
- 14.3 Failure to meet the target time will not be grounds for redress. This changes RRS 62.1(a).

- 14.4 Boats failing to finish within the time stated in the finishing window after the first boat sails the course and finishes will be scored Did Not Finish (DNF) without a hearing. This changes RRS 35, A4 and A5.

## 15 PROTESTS AND REQUESTS FOR REDRESS

- 15.1 Protest forms are available from the Race Office located on the ground floor of the main administrative building or the Jury Secretary's office located on the 3<sup>rd</sup> floor of the main administrative building. Protests and requests for redress or reopening shall be delivered to the Jury Secretary's office in written hardcopy format only, within the appropriate time limit.
- 15.2 For each racing area, the protest time limit is 75 minutes after the last boat has finished the last race of the day, or the Race Committee signals no more racing today, whichever is later.
- 15.3 Notices will be posted no later than 30 minutes after the protest time limit to inform competitors of hearings in which they are parties or named as witnesses. Hearings will be held in either Hearing Rooms 1 or 2, on the 3<sup>rd</sup> floor of the main administrative building, beginning at the time posted.
- 15.4 Notices of protests by the Race Committee, Technical Committee or Protest Committee will be posted to inform boats under RRS 61.1(b).
- 15.5 A list of boats that under SI 13.1 have been penalised for breaking RRS 42 and under SI 13.3, will be posted.
- 15.6 On the last scheduled day of racing, a request for redress based on a Protest Committee decision shall be delivered no later than 30 minutes after the decision was posted. This changes RRS 62.2.
- 15.7 Decisions of the International Jury will be final as provided in RRS 70.5.
- 15.8 If RRS Appendix N1.4(b) applies, the time limit for requesting a hearing under that rule is 30 minutes after the party was informed of the panel's decision.
- 15.9 [DP] The penalty for a breach of the class rules may, at the discretion of the International Jury, be less than a disqualification.
- 15.10 [NP] The infringement of RRS Appendix G, IDENTIFICATION ON SAILS, shall not be grounds for protests by a boat.

## 16 SCORING

- 16.1 RRS B8 is deleted.
- 16.2 1 race for each event is required to be completed to constitute the competition.
- 16.3 When fewer than five races have been completed, a boat's series score will be the total of her race scores. When five or more races have been completed, a boat's score will be the total of her race scores excluding her worst score. However, the score from any relay races will not be excluded.
- 16.4 Standard penalties [SP] cannot be discarded and will be added to a boat's series score as the regatta progresses. A separate column titled "SP" on the results sheet will display the total standard penalty count for each boat.
- 16.5 To request correction of an alleged error in posted race or series results, a boat may complete a scoring enquiry form available from the Race Office.
- 16.6 For the RS:One (Mixed Team) event, the scores of one male and one female from each National Authority will be combined together to give the score for each pair (team) for each race. Ties will be broken in accordance with Appendix A8.

## **17 [DP][NP] SAFETY REGULATIONS**

- 17.1 All competitors shall wear personal floatation devices at all times while afloat, except briefly while changing or adjusting clothing, or personal equipment. Wet suits, dry suits and trapeze harnesses are not personal floatation devices. This changes RRS 40.
- 17.2 Personal floatation devices shall comply with appropriate international standards. The Organising Authority reserves the right to reject any personal floatation devices which it considers unsuitable.
- 17.3 [SP] Check-Out and Check-In Procedures:
- 17.3.1 Before launching on each scheduled racing day, a competitor from each boat shall individually Check-Out, by personally hanging his/her accreditation card on the tally boards located near the launching ramps.
- 17.3.2 Upon returning to shore after racing, a competitor from each boat shall individually Check-In, by personally removing his/her accreditation card from the tally boards, as soon as possible but no later than the protest time limit.
- 17.4 Boats not leaving the harbour or shore for a scheduled race shall promptly notify the Race Office.
- 17.5 A boat that retires from a race shall notify the Race Committee as soon as possible before leaving the racing area, or if that is not possible, shall complete a retirement declaration form at the Race Office as soon as possible after returning ashore but no later than the protest time limit.
- 17.6 When flags AP over H or N over H are displayed from a Race Committee vessel, all boats shall immediately return ashore and will wait there for further information. This changes race signals AP over H and N over H.
- 17.7 Competitors shall include their country code and sail numbers at the forward or front section of their boat trolleys to facilitate the launching and recovery process.

## **18 [DP][NP] REPLACEMENT OF CREW OR EQUIPMENT**

- 18.1 Substitution of competitors will not be allowed.
- 18.2 Substitution of damaged or lost equipment will not be allowed unless approved in writing by the Technical Committee. Requests for substitution shall be made to the Technical Committee at the first reasonable opportunity by filling in an Equipment Replacement Request Form at the Race Office. The substitution may only be permitted after the Technical Committee has checked and scrutinised both the damaged and the substituted equipment.
- 18.3 If the substitution is required to be made while afloat before or between races, permission may be sought verbally from the Technical Committee afloat or from the Race Committee and such replacement shall be regularised ashore by presenting both the damaged and the substituted equipment, along with the Equipment Replacement Request Form to the Technical Committee after the end of the day's racing.

## **19 [DP][NP] EQUIPMENT AND MEASUREMENT CHECKS**

- 19.1 On the water, a boat can be instructed by a member of the Technical Committee to proceed immediately to a designated area for inspection. Ashore, equipment may be inspected or measured at any time.
- 19.2 Once a boat has completed measurements or equipment inspections, the hull may not be removed from the boat park without written permission of the Technical Committee.

**20 [DP][NP] EVENT ADVERTISING**

- 20.1 Competitor advertising will be restricted to World Sailing Regulation 20, Advertising Code.
- 20.2 Boats may be required to display advertising chosen and supplied by the Organising Authority. If this rule is broken, World Sailing Regulation 20.9.2 applies.

**21 OFFICIAL VESSELS**

Official vessels will be marked as follows:

Race Committee starting vessel only (corresponding racing area flag)	<b>A</b> <b>B</b> <b>C</b> <b>D</b>
Jury	<b>JURY</b>
Technical Committee	<b>M</b>
Rescue/Safety	<b>SAFETY</b>
Media/Press	<b>MEDIA</b>
Principal Race Officer/Technical Delegate	<b>PRO/TD</b>
VIP	<b>VIP</b>

**22 [DP][NP] SUPPORT VESSELS**

Rules regarding Support Team Regulations shall apply to support vessels and are described in SI Addendum D.

**23 TRASH DISPOSAL**

In addition to RRS 55, trash may be placed aboard support or official vessels. Ashore, competitors shall dispose of trash in appropriate disposal bins provided at the competition venue.

**24 [DP][NP] RADIO COMMUNICATION**

Except in an emergency, a boat that is racing shall not make voice or data transmissions and shall not receive voice or data communication that is not available to all boats.

**25 DISCLAIMER OF LIABILITY**

Competitors participate in the competition entirely at their own risk. See RRS 4, Decision to Race. The Organising Authority, or any other race officials and volunteers, will not accept any liability for material damage or personal injury or death sustained in conjunction with or prior to, during, or after the competition.

**26 [DP][NP] INSURANCE**

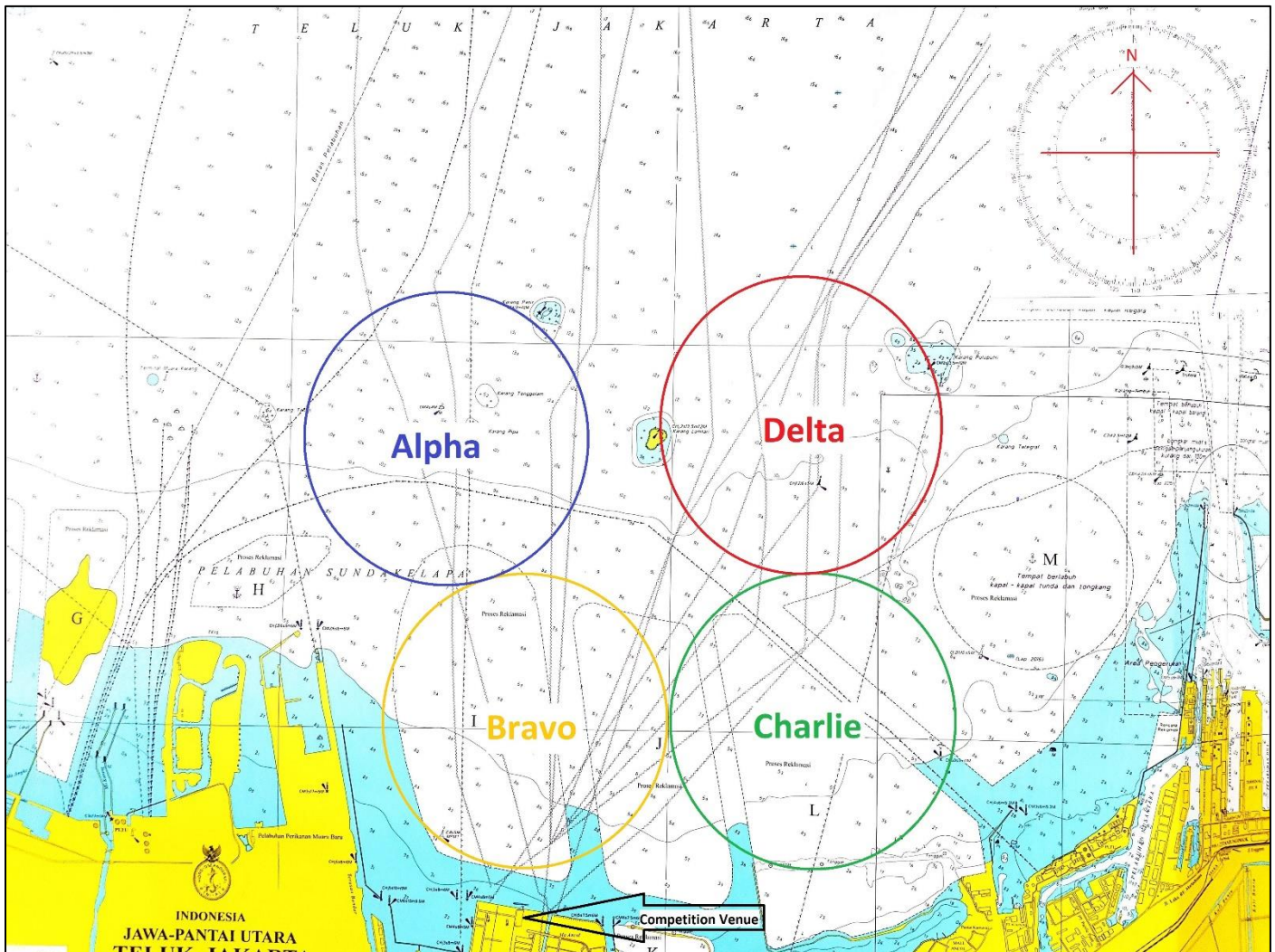
- 26.1 Each participating boat shall be insured with an adequate and valid third-party liability coverage, with a minimum coverage of USD 1,000,000 (or equivalent). A photocopy of the insurance certificate shall be submitted to the Organising Authority at the on-site registration.
- 26.2 The Organising Authority is not responsible for verifying the status or validity of certificates.

## **27 [DP][NP] MEDIA RIGHTS, CAMERAS AND ELECTRONIC EQUIPMENT**

- 27.1 By participating in this competition, competitors and their support team automatically grant to the Organising Authority and any event sponsors, the right in perpetuity to make, use, and show at their discretion, any photographs, audio and video recordings, and other reproductions of them made at the venue, or on the water from the time of their arrival at the venue, until their final departure, without compensation.
- 27.2 Boats may be required to carry cameras, sound equipment or positioning equipment as specified by the Organising Authority. Information from such equipment shall not be used by a boat as evidence in a hearing. This changes RRS 63.6.
- 27.3 The equipment provided, once placed on the boat as instructed by the Organising Authority, shall not be manipulated by the competitor or the support person in any way, except when so required by the Organising Authority.
- 27.4 Competitors may be required for media interviews during the period of the competition.



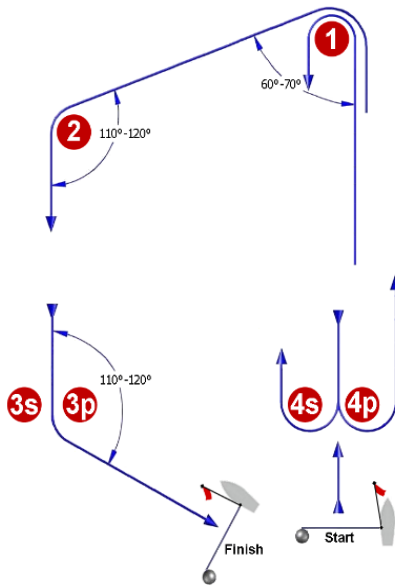
## ADDENDUM A – Racing Areas



<b>Racing Area</b>	<b>Approximate Area Centre</b>	<b>Area Diameter</b>	<b>VHF Channel</b>
Alpha (A)	S 06°04.380' E 106°48.600'	1.4 NM	71
Bravo (B)	S 06°05.690' E 106°49.070'	1.4 NM	72
Charlie (C)	S 06°05.825' E 106°50.470'	1.4 NM	73
Delta (D)	S 06°04.495' E 106°50.655'	1.4 NM	74

## ADDENDUM B – The Courses

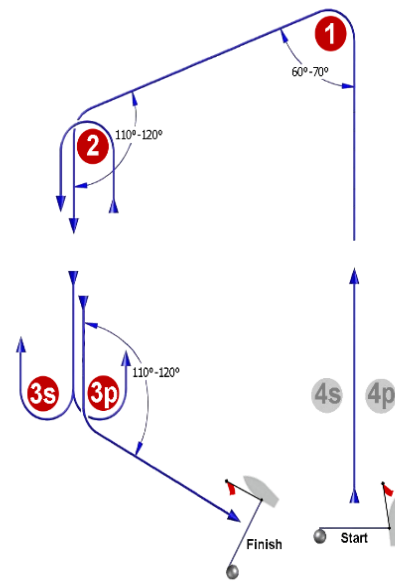
**I**



Course: Inner Trapezoid

Signal	Marking Rounding Order
I2	Start - 1 - 4s/4p - 1 - 2 - 3p - Finish
I3	Start - 1 - 4s/4p - 1 - 4s/4p - 1 - 2 - 3p - Finish
I4	Start - 1 - 4s/4p - 1 - 4s/4p - 1 - 4s/4p - 1 - 2 - 3p - Finish

**O**



Course: Outer Trapezoid

Signal	Marking Rounding Order
O2	Start - 1 - 2 - 3s/3p - 2 - 3p - Finish
O3	Start - 1 - 2 - 3s/3p - 2 - 3s/3p - 2 - 3p - Finish
O4	Start - 1 - 2 - 3s/3p - 2 - 3s/3p - 2 - 3s/3p - 2 - 3p - Finish

**L**



Course: Windward/Leeward

Signal	Marking Rounding Order
L2	Start - 1 - 4s/4p - 1 - Finish
L3	Start - 1 - 4s/4p - 1 - 4s/4p - 1 - Finish
L4	Start - 1 - 4s/4p - 1 - 4s/4p - 1 - 4s/4p - 1 - Finish

## ADDENDUM C – Schedule of Races

<i>Date</i>	<i>Events</i>	<i>No. of races</i>	<i>First warning signal</i>	<i>Coaches &amp; Team leaders Meeting</i>	<i>Remarks</i>
23 Aug 2018, Thurs	Lasers, 470	Practice race	1300h	1000h	*RS:One Note:  RS:One will either race mixed-team fleet races or relay races on a single day. Relay races will be scheduled on days forecasted for planning conditions to exist or prevailing weather conditions on-site. Should relay races be conducted, they will be scheduled after RS:X events have finished racing for the day. The Race Committee will attempt to have at least 2 relay races sailed on the day scheduled to have relay racing.
	Skiffs	Practice race	1300h		
	RS:X	Practice race	1300h		
	RS:One	Practice race	1300h		
24 Aug 2018, Fri	Lasers, 470	2	1200h	0900h	
	Skiffs	2	1200h		
	RS:X	2	1200h		
	RS:One	2	1200h		
25 Aug 2018, Sat	Lasers, 470	3	1200h	0900h	
	Skiffs	3	1200h		
	RS:X	3	1200h		
	RS:One	<b>TBC</b>	<b>TBC</b>		
26 Aug 2018, Sun	Lasers, 470	2	1200h	0900h	
	Skiffs	3	1200h		
	RS:X	3	1200h		
	RS:One	<b>TBC</b>	<b>TBC</b>		
27 Aug 2018, Mon	Lasers, 470	-	Reserve day	Reserve day	
	Skiffs	-			
	RS:X	-			
	RS:One	-			
28 Aug 2018, Tues	Lasers, 470	2	1200h	0900h	
	Skiffs	3	1200h		
	RS:X	3	1200h		
	RS:One	<b>TBC</b>	<b>TBC</b>		
29 Aug 2018, Wed	Lasers, 470	2	1200h	0900h	
	Skiffs	3	1200h		
	RS:X	3	1200h		
	RS:One	<b>TBC</b>	<b>TBC</b>		
30 Aug 2018, Thurs	Lasers, 470	-	Reserve day	Reserve day	
	Skiffs	-			
	RS:X	-			
	RS:One	-			
31 Aug 2018, Fri	Lasers, 470	1	1200h	0900h	
	Skiffs	1	1200h		
	RS:X	1	1200h		
	RS:One	<b>TBC</b>	<b>TBC</b>		

## **ADDENDUM D – Support Team Regulations**

### **1 GENERAL**

- 1.1 These Support Team Regulations will apply at all times while support persons are at the venue or on the field of play.
- 1.2 For the purposes of these regulations, a support vessel includes any vessel that is under the control or direction of a person who is or may provide physical or advisory support to an athlete/competitor, including the gathering of data that may be used at a later time.
- 1.3 The Organising Authority, Race Committee, Technical Committee or International Jury, may inspect support vessels at any time to ensure that they comply with these regulations and the person responsible for the vessel shall facilitate such an inspection.
- 1.4 The Organising Authority may refuse to register support vessels not deemed to be suitable. Generally, open vessels more than 4.0m and less than 7.5m in length and having minimal or no superstructure (cabin, coach house, bridge, etc.) are considered suitable.

### **2 IDENTIFICATION**

- 2.1 Support vessels shall clearly display a flag with their 3 letter National Authority code (see RRS G1.1) or shall be permanently marked with a sticker displaying their 3 letter National Authority code, clearly visible from both sides of the vessel or engine. The minimum height for the letters shall be 200mm. The letters will not be provided by the Organising Authority.
- 2.2 No other flags or identification shall be displayed by support vessels.

### **3 SAILING VENUE**

- 3.1 Support vessels shall use the designated slipway/area for launching. Once launched, trailers shall be moved as soon as possible to the trailer park or as otherwise directed by the Organising Authority.
- 3.2 When not in use, support vessels shall be appropriately berthed at the sailing venue in the allocated areas for support vessels for the entire duration that these Support Team Regulations apply.
- 3.3 Support vessels shall not use the dinghy/board launching slipways or keelboat pontoons for any purpose whatsoever, including mooring, launching and retrieval, loading and unloading of equipment, etc.

### **4 SAFETY**

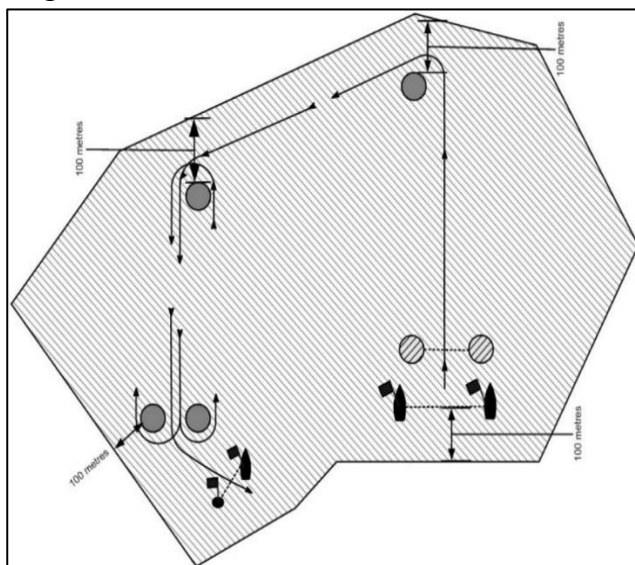
- 4.1 It is strongly recommended that life jackets be worn at all times when afloat. It is also strongly recommended that the kill cord is used at all times when the engine is running.
- 4.2 When the Race Committee displays flag V with repetitive sounds, all support vessels shall monitor the Race Committee radio channel for that racing area for search and rescue instructions. This may be to collaborate with rescue tasks and shall stay in the racing area until flag V is removed, or the “All-Clear” has been confirmed by the Course Representative (CR) or the Principal Race Officer (PRO).
- 4.3 For safety reasons, coaches are encouraged to use a VHF radio that should be capable of transmitting and receiving all international ship-to-ship channels. Radios will not be provided and coaches should bring their own. VHF channels are stated in SI Addendum A.

## 5 RESTRICTIONS

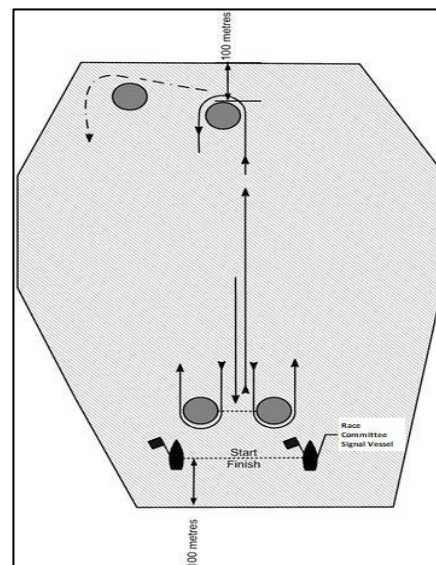
- 5.1 Support vessels shall not leave any device, piece of equipment, buoy, marker or similar item permanently in the water. Temporary use of floating objects is allowed for current measurement. These objects shall be removed as soon as the measurement has been taken.
- 5.2 Support vessels shall take particular care to minimise the effect their wash will have on boats racing when driving around the field of play.
- 5.3 The use of drones is prohibited.

## 6 SUPPORT VESSEL EXCLUSION ZONE BOUNDARIES

- 6.1 Except when participating in rescue operations, coaches and other support persons shall stay outside areas where boats are racing from the time of the preparatory signal for the first fleet to start until all boats have finished or retired or the Race Committee signals a postponement, general recall or abandonment of **all fleets**.
- 6.2 Between sequences of races when all racing has finished or when all racing for that racing area has been postponed or abandoned, support vessels may enter the racing area to service their athletes/competitors but shall restrict their speed to five (5) knots. If further racing is to take place, support vessels shall then comply with the applicable Support Team Regulation.
- 6.3 The areas the boats are racing can be defined as the area inside the course and within 100m of any mark, lay-line, starting or finishing lines, or any area where any boat that is racing, is sailing or may sail. Likewise, support vessels shall not sit on the extensions of the starting line and shall stay at least 100m below the starting line. In addition, support vessels shall not be between the inner and outer trapezoid courses when boats are racing on both courses. These areas are also demarcated in Figures 1 and 2 below.



**Figure 1. Trapezoid Course**



**Figure 2. Windward-Leeward**

- 6.4 When a Race Committee or Jury vessel indicates to a support vessel to move further from the racing area, the mentioned support vessel shall do so immediately.