

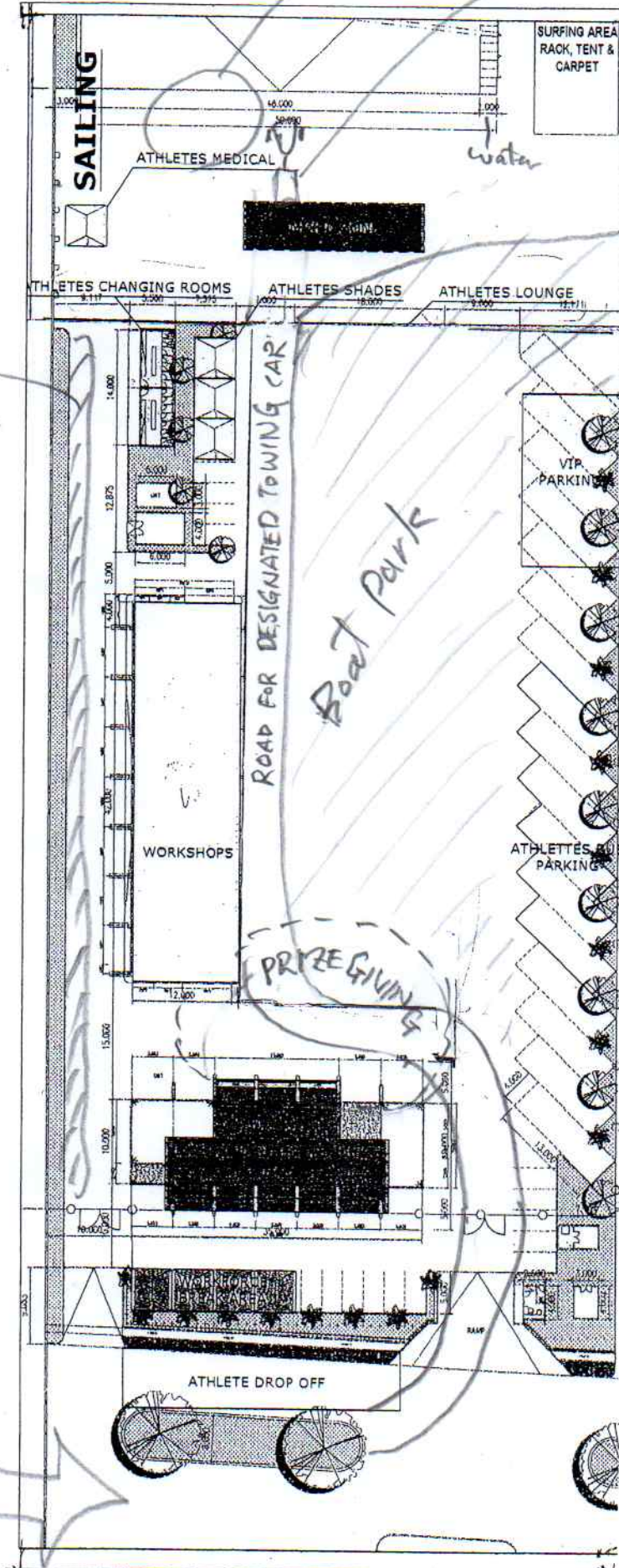
Lay-out

25th June  
After Races

TEAMS ARE REQUESTED TO  
LOAD ONTO TRAILER WITHOUT TOWING CAR  
SOME THICK ROPE WILL BE AVAILABLE  
FOR PULLING UP.

TOWING CAR IS USED ONLY  
FOR TOWING LOADED  
TRAILERS TO PARK AREA

Empty Trailer  
waiting  
ARE



No

Boat Park

ROAD FOR DESIGNATED TOWING CAR

PRIZE GIVING

Trailer  
Park