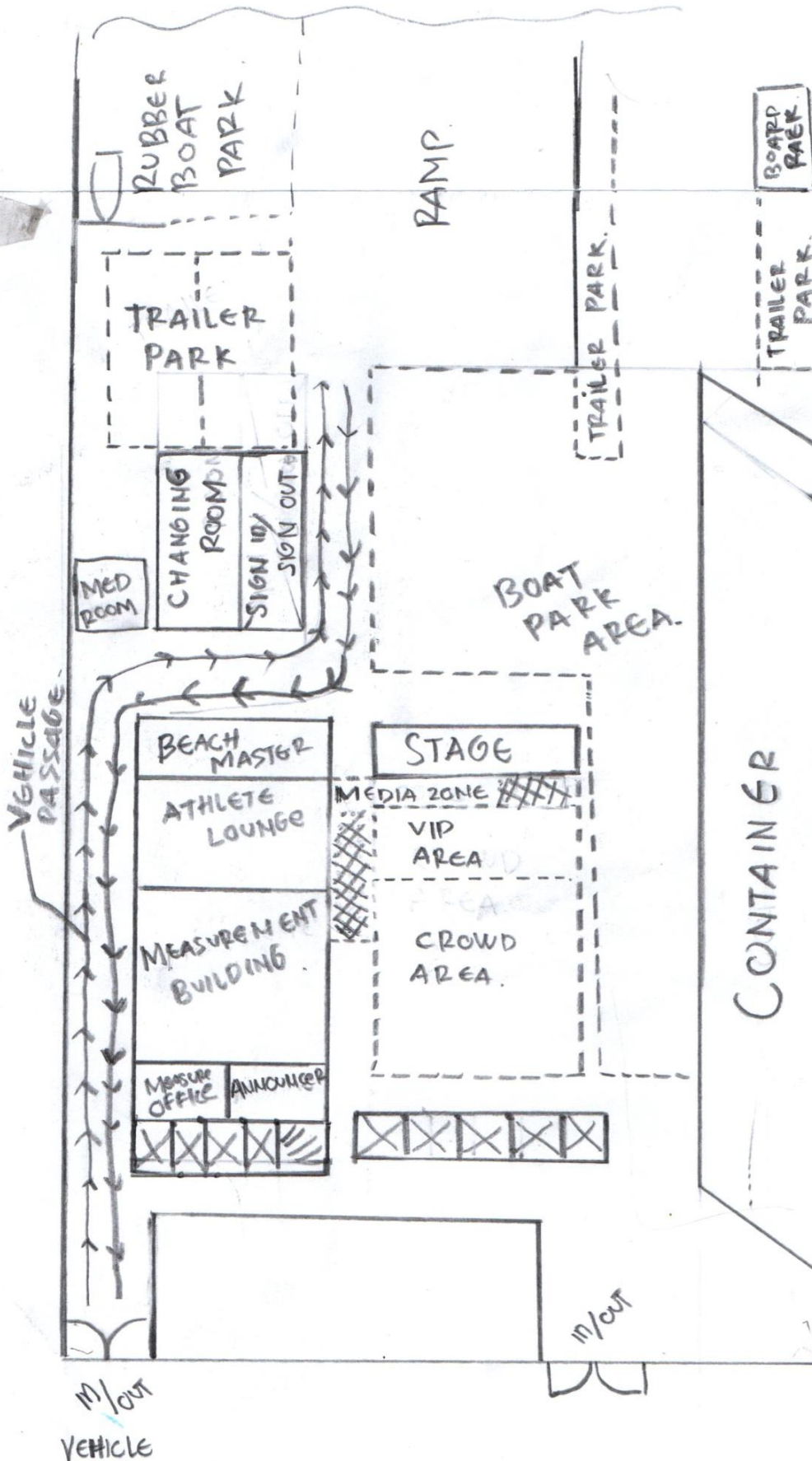


VENUE LAY-OUT ON THE 31ST OF AUGUST 2018

After the race



1. No container loading from 17:50 until the end of Prize Giving
2. No cars on the ramp, only human powered tractor is allowed
3. Trailers with boat shall be kept in the allocated area until you load the trailer into your container

Venue Manager
 Johnny E. Awuy

T. to F. Otani
 Technical Delegate
 Takao Otani