

2020 FORMULA KITE MIXED TEAM RELAY PANAMERICAN CHAMPIONSHIPS

LOCAL SAILING INSTRUCTIONS

These LSIs complement the NoR/SI and takes precedence over any conflicting NoR/SI rules.

Issued 07 December 2020

1 RULES

2.9 RRS Appendix FR applies. See Addendum 2.

5 SCHEDULE

5.1.1 The technical meeting on 07 December 2020 will be held at 1200 local time next to the registration desk.

5.1.2 There are 10 races scheduled.

5.1.3 The team member A shall be male in races with an odd number and female in races with an even number.

6 FORMAT AND SCORING

6.2 The format will be a single series.

7 STARTING AND FINISHING

7.2 The starting line for team member A will be between a staff displaying an orange/white chequered flag on the Race Committee vessel and the course side of the port-end inflatable mark.

7.4 The changeover finishing line for team member A and starting line for team member B will be between a staff displaying the R flag on the race committee vessel and the course side of the nearby changeover mark.

- 7.5 The finishing line for team member B will be between a staff displaying a blue/white checker flag and the course side of the nearby finishing mark.
- 7.9 There is no changeover area for the purpose of rule RRS FR.24.3

8 TIME LIMITS AND TARGET TIMES

- 8.1 Time limits and target times, in minutes, are as follows:

Target Time	Time Limit	Mark 1 Time Limit	Finish Time Window
6	12	3	6

9 COURSES AND RACING AREAS

- 9.4 Course Marks are:

Marks 1, 2, 3, 4, 5

Yellow pyramid buoys

Mark P

Red small pyramid buoy

Finishing marks

RC vessel and red small pyramid buoy

Starting marks

RC vessel and orange pyramid buoy

Changeover mark

Orange cylindrical buoy

11 COMMUNICATION WITH COMPETITORS

- 11.1.2 The Official Flag Pole is located next to the launching area.

- 11.6 The class flag is: WHITE FLAG WITH FORMULA KITE LOGO

15 [SP] [DP] [NP] EQUIPMENT INSPECTION

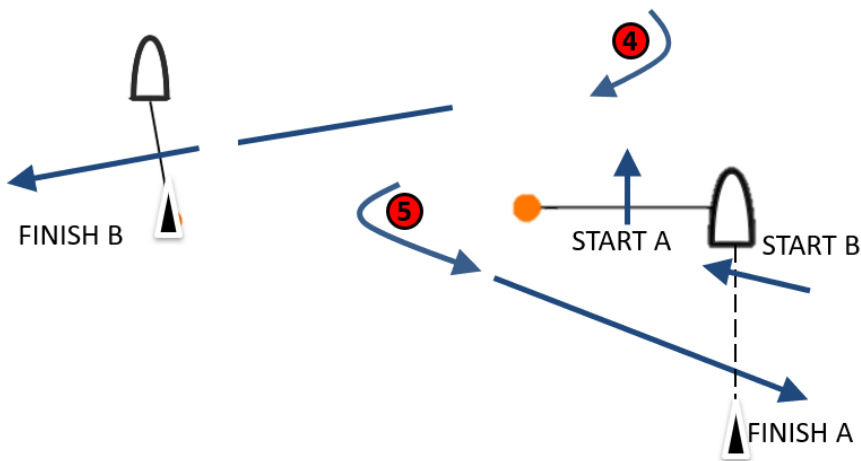
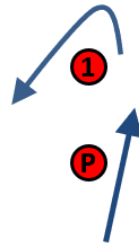
NoR/SI 15.5 is deleted.

17 PROTESTS, PENALTIES AND REQUESTS FOR REDRESS

17.1.1 The protest time limit is 30 minutes after the last kiteboard has finished the last race of the day for that Class, or when AP over A, or N over A is displayed.

ADDENDUM 1

COURSE DIAGRAMS



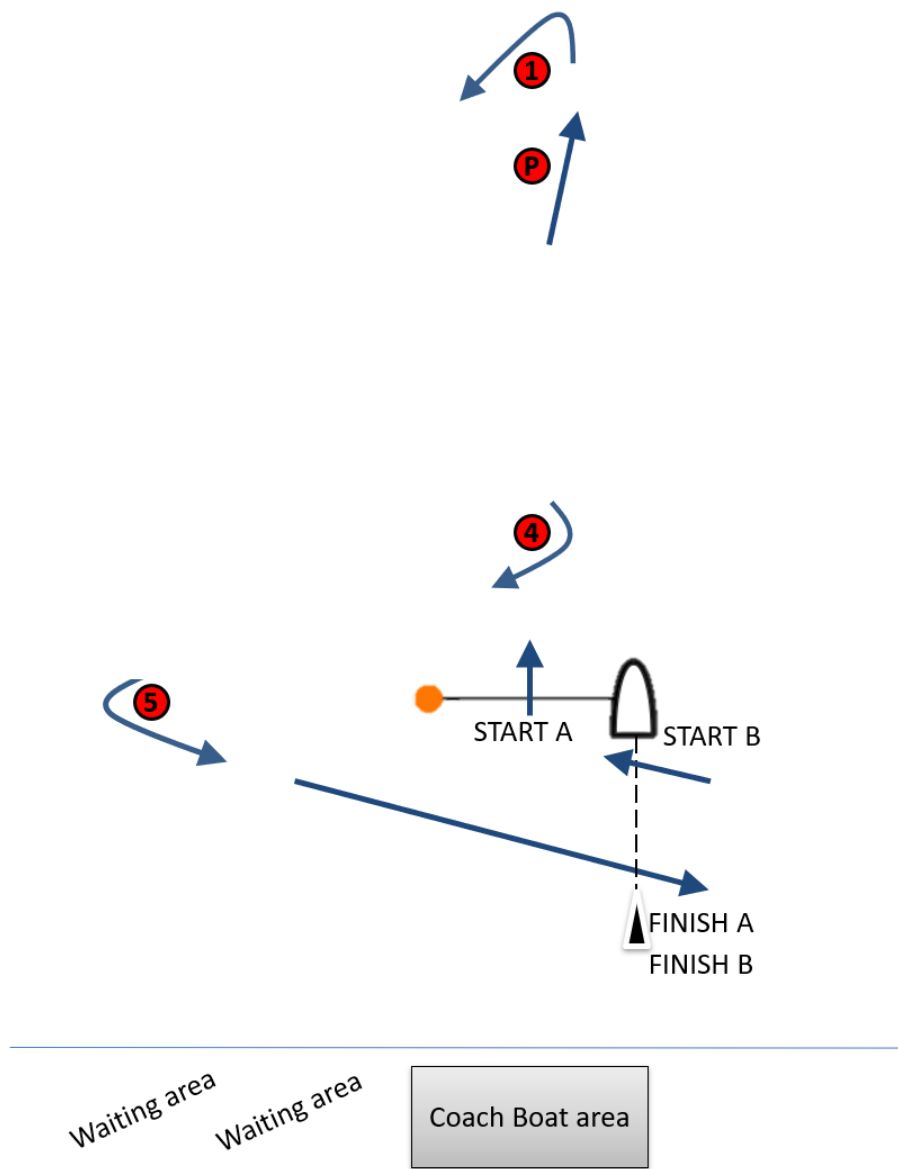
Waiting area

Waiting area

Coach Boat area

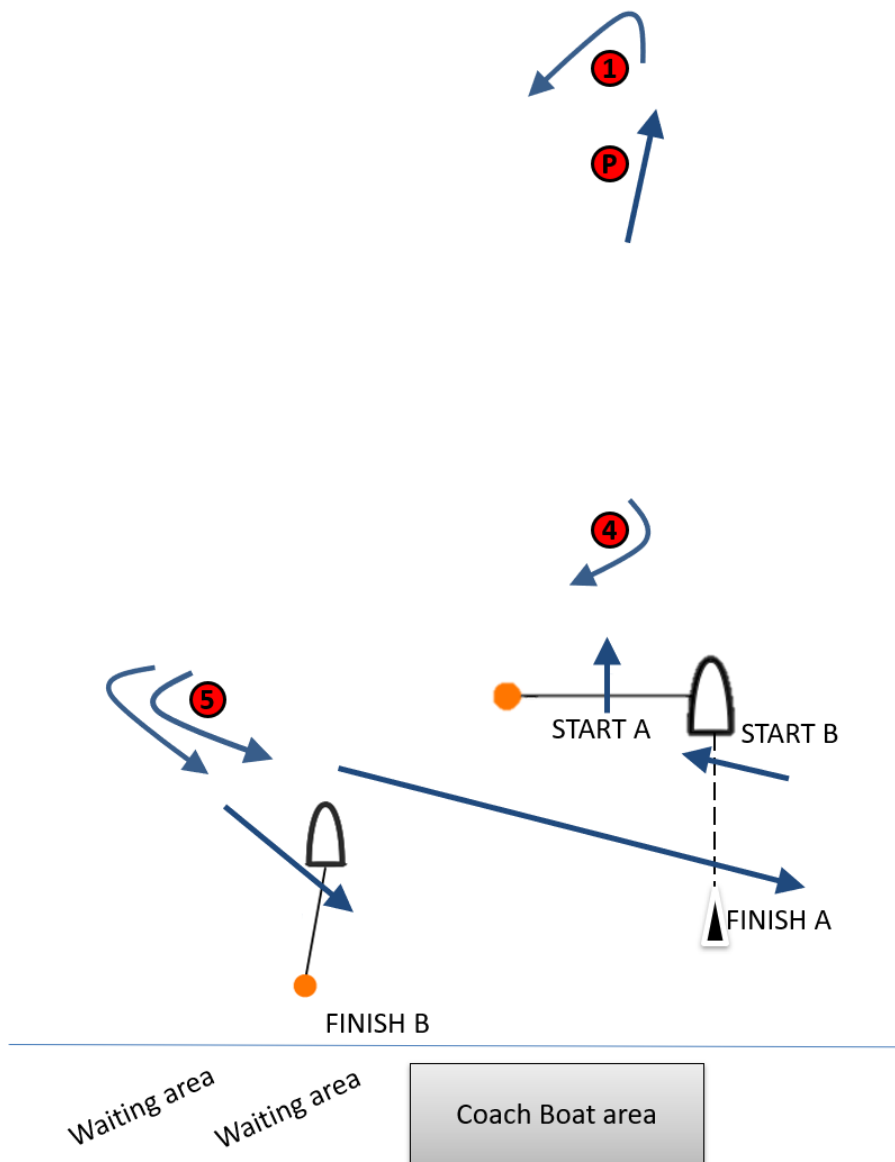
XR: Start A – Pp – 1p – Pp – 4s – 5p – Finish A – Start B – Pp – 1p – Pp – 4s – Finish B

All distances and course angles are approximate.



XRS: Start A – Pp – 1p – Pp – 4s – 5p – Finish A – Start B – Pp – 1p – Pp – 4s – 5p – Finish B

All distances and course angles are approximate.



XRT: Start A – Pp – 1p – Pp – 4s – 5p – Finish A – Start B – Pp – 1p – Pp – 4s – 5p – Finish B

All distances and course angles are approximate.

Addendum 2, schedule of races is deleted and replaced with:

ADDENDUM 2

TEST RULES FOR

MIXED KITEBOARD RELAY EVENT

Appendix FR

KITEBOARD RELAY TEST RULES

Version 16 April 2019

WORLD SAILING TEST RULES

KITEBOARDING MIXED RELAY

Under Regulation 28.1.5(b), World Sailing has approved the use of these Test Rules as set out in this approval document. These rules only apply if the relevant version of the test rule is referred to in the Notice of Race and if a copy of the test rule, or a specific link to the test rule, is provided to competitors.

WHO MAY USE THESE TEST RULES:

Any Organising Authority running Kiteboarding Mixed Relay Events.

CHANGES TO THE RACING RULES:

See attached document Kiteboard Relay Test Rules, 16 April 2019.

EXPIRY DATE:

This test rule expires when an Organising Authority no longer conducts racing under the 2017-2020 edition of the Racing Rules of Sailing. In addition to the date detailed above, World Sailing may amend the Test Rule and issue a new version of this document that shall to be used in events not yet started and may be used in events that are running if suitable notification of the change is issue to competitors.

DESIRED OUTCOME:

Kiteboard Mixed Relay is an event in the Paris 2024 Olympic Games. These test rules are created to provide rules for Kiteboard mixed relay events with the aim of formalizing such rules into the RRS.

POSSIBLE CONSEQUENCES:

None known. Relay format is run as a distinct series of races, not run concurrently with any other format.

FEEDBACK:

A race official or a representative of the Organising Authority shall send a report to World Sailing as soon as possible after the event, describing the successes and failures of the test rule. If possible, please include views of the competitors. The report shall be emailed to: rules@sailing.org, referencing the applicable Test Rule code that appears on the top left of this document.

APPENDIX FR

KITEBOARD RELAY TEST RULES

Kiteboard Relay races shall be sailed under The Racing Rules of Sailing as changed by this appendix. The term 'boat' elsewhere in the racing rules means 'kiteboard', 'boat' or 'team' as appropriate.

CHANGES TO THE DEFINITIONS

The definitions *Clear Astern* and *Clear Ahead*; *Overlap*, *Finish*, *Keep Clear*, *Leeward* and *Windward*, *Mark-Room*, *Obstruction*, *Racing*, *Start*, *Tack*, *Starboard* or *Port* and *Zone* are deleted and replaced by:

Clear Astern and Clear Ahead; Overlap When neither kiteboard is in the zone, one kiteboard is *clear astern* of another when her hull is behind a line abeam from the aftermost point of the other kiteboard's hull. The other kiteboard is *clear ahead*. They *overlap* when neither is *clear astern*. However, they also *overlap* when a kiteboard between them *overlaps* both. These terms always apply to kiteboards on the same *tack*.

Finish

- (a) Team member A *finishes* when, while the competitor is in contact with the hull, any part of her hull, or the competitor, crosses the changeover finish line from the course side.
- (b) Team member B *finishes* when, while the competitor is in contact with the hull, any part of her hull, or the competitor, crosses the finishing line from the course side.

However, she has not *finished* if after crossing that line she

- (a) takes a penalty under rule 44.2,
- (b) corrects an error under rule 28.2 made at the line, or
- (c) continues to sail the course.

Keep Clear A kiteboard *keeps clear* of a right-of-way kiteboard

- (a) if the right-of-way kiteboard can sail her course with no need to take avoiding action and,
- (b) when the kiteboards are *overlapped*, if the right-of-way kiteboard can also change course in both directions or move her kite in any direction without immediately making contact.

Leeward and Windward A kiteboard's *leeward* side is the side that is or, when she is head to wind, was away from the wind. However, when sailing directly downwind, her *leeward* side is the side on which her kite lies. The other side is her *windward* side. When two kiteboards on the same *tack*

overlap, the one whose hull is on the *leeward* side of the other's hull is the *leeward* kiteboard. The other is the *windward* kiteboard.

Mark-Room Room for a kiteboard to sail her *proper course* to round or pass the *mark*.

Obstruction An object that a kiteboard could not pass without changing course substantially, if she were sailing directly towards it and 10 meters from it. An object that can be safely passed on only one side and an area so designated by the sailing instructions are also *obstructions*. However, a kiteboard *racing* is not an *obstruction* to other kiteboards unless they are required to *keep clear* of her or, if rule 23 applies, avoid her. A vessel under way, including a kiteboard *racing*, is never a continuing *obstruction*.

Racing A kiteboard is racing from her team's preparatory signal until she *finishes* and clears the changeover finishing line or the finishing line and *marks* or retires, or until the race committee signals a general recall, *postponement* or *abandonment*.

Start

- (a) Team member A *starts* when, having complied with rule 30.1 or 30.2 as applicable, any part of her hull, or the competitor, crosses the starting line in the direction of the first *mark*.
- (b) Team member B *starts* when, having complied with rule 30.3, any part of her hull, or the competitor, crosses the changeover starting line in the direction of the first *mark*.

Tack, Starboard or Port A kiteboard is on the *tack*, *starboard* or *port*, corresponding to the competitor's hand that would be forward if the competitor were in normal riding position (riding heel side with both hands on the control bar and arms not crossed). A kiteboard is on *starboard tack* when the competitor's right hand would be forward and is on the *port tack* when the competitor's left hand would be forward.

Zone The area around a *mark* within a distance of 30 meters. A kiteboard is in the *zone* when any part of her hull is in the *zone*.

Add the following definitions:

Capsized A kiteboard is *capsized* if

- (a) her kite is in the water, or
- (b) her lines are tangled with another kiteboard's lines.

Recovering A kiteboard is *recovering* from the time her kite is out of the water until she has steerage way.

Team A *team* consists of team member A and team member B, each of the opposite gender. Team member A sails the course before team member B.

FR1 CHANGES TO THE RULES OF PART 1

[No changes]

FR2 CHANGES TO THE RULES OF PART 2

In the second sentence of the preamble, '*injury or serious damage*' is changed to '*injury, serious damage or a tangle*'

SECTION A

RIGHT OF WAY

13 WHILE TACKING

Rule 13 is deleted.

SECTION B

GENERAL LIMITATIONS

14 AVOIDING CONTACT

Rule 14(b) is changed to:

(b) shall be exonerated if she breaks this rule and the contact does not cause damage, injury or a tangle.

Rule 15 is changed to:

15 ACQUIRING RIGHT OF WAY

When a kiteboard acquires right of way, she shall initially give the other kiteboard *room to keep clear*, unless she acquires right of way because of the other kiteboard's actions. However, a kiteboard shall be exonerated if she breaks this rule and there is no contact.

Rule 16 is changed to:

16 CHANGING COURSE OR KITE POSITION

16.1 When a right-of-way kiteboard changes course or the position of her kite, she shall give the other kiteboard *room to continue to keep clear*.

16.2 In addition, when after the starting signal a *port-tack* kiteboard is *keeping clear* by sailing to pass astern of a *starboard-tack* kiteboard, the *starboard-tack* kiteboard shall not change course or the position of her kite if as a result the *port-tack* kiteboard would immediately need to change course or the position of her kite to continue *keeping clear*.

SECTION C

AT MARKS AND OBSTRUCTIONS

Rule 18 is changed to:

18 MARK-ROOM

18.1 When Rule 18 Applies

Rule 18 applies between kiteboards when they are required to leave a *mark* on the same side and at least one of them is in the *zone*. However, it does not apply

- (a) between a kiteboard approaching a *mark* and one leaving it, or
- (b) between kiteboards on opposite tacks.

18.2 Giving Mark-Room

(a) When the first kiteboard reaches the *zone*,

(1) if kiteboards are *overlapped*, the outside kiteboard at that moment shall thereafter give the inside kiteboard *mark-room*.

(2) if kiteboards are not *overlapped*, the kiteboard that has not reached the *zone* shall thereafter give *mark-room*.

(b) If the kiteboard entitled to *mark-room* leaves the *zone*, the entitlement to *mark-room* ceases and rule 18.2(a) is applied again if required based on the relationship of the kiteboards at the time rule 18.2(a) is re-applied.

(c) If a kiteboard obtained an inside *overlap* and, from the time the *overlap* began, the outside kiteboard is unable to give *mark-room*, she is not required to give it.

(d) If there is reasonable doubt that a kiteboard obtained or broke an overlap in time, it shall be presumed that she did not.

18.3 Tacking or Gybing

When an inside *overlapped* right-of-way kiteboard must tack or gybe at a *mark* to sail her *proper course*, until she tacks or gybes she shall sail no farther from the *mark* than needed to sail that course. Rule 18.3 does not apply at a gate *mark* and a kiteboard shall not be penalized for breaking this rule unless the course of another kiteboard was affected by the breach of this rule.

20 ROOM TO TACK AT AN OBSTRUCTION

Add new rule 20.4:

20.4 Arm Signals

The following arm signals are required in addition to the hails

- (a) for 'Room to tack', repeatedly and clearly circling one hand over the head; and
- (b) for 'You tack', repeatedly and clearly pointing at the other kiteboard and waving the arm to windward.

SECTION D

OTHER RULES

Rule 21 is changed to:

21 EXONERATION

When a kiteboard is sailing within the *room* or *mark-room* to which she is entitled, she shall be exonerated if, in an incident with a kiteboard required to give her that *room* or *mark-room*, she breaks a rule of Section A, rule 15 or rule 16. In addition, at a rounding *mark* at which a kiteboard was entitled to *mark-room*, she shall continue to be exonerated for breaking rule 10, 15, or 16 until she leaves the *zone*.

22 STARTING ERRORS; TAKING PENALTIES

Rule 22.3 is changed to:

22.3 During the last minute before her starting signal, a kiteboard that stops, slows down significantly, or one that is not making significant forward progress shall *keep clear* of all others unless she is *capsized*.

Rule 23 is changed to:

23 CAPSIZED, RECOVERING OR AGROUND; RESCUING

23.1 If possible, a kiteboard shall avoid a kiteboard that is *capsized*, is aground, or is trying to help a person or vessel in danger.

23.2 A kiteboard that is *recovering* shall *keep clear* of a kiteboard that is not.

24 INTERFERING WITH ANOTHER KITEBOARD

Rule 24.1 is changed, and add new rule 24.3:

24.1 If reasonably possible, a kiteboard not *racing* shall not interfere with a kiteboard that is *racing* and a kiteboard that has *finished* shall not act to interfere with a kiteboard that has not *finished*.

24.3 From her preparatory signal until team member A has rounded the last mark of the course, no part of team member B's hull or crew shall be in the changeover area, defined in the sailing instructions.

FR3 CHANGES TO THE RULES OF PART 3

Rule 26 is changed to:

26 STARTING RACES

26.1 Races shall be started by using the following signals. Times shall be taken from the visual signals; the absence of a sound signal shall be disregarded

<i>Minutes before starting signal</i>	<i>Visual signal</i>	<i>Sound signal</i>	<i>Means</i>
3	Class flag	One	Warning signal
2	U or black flag	One	Preparatory signal
1	U or black flag removed	One long	One minute
0	Class flag removed	One	Starting signal

28 SAILING THE COURSE

Rule 28.1 is changed to:

28.1 Team member A shall *start*, sail the course described in the sailing instructions and *finish*. Team member B shall thereafter *start*, sail the course described in the sailing instructions and *finish*. While doing so, each team member may leave on either side a *mark* that does not begin, bound or end the leg she is sailing. After *finishing* she need not cross the finishing line completely.

29 RECALLS

Rule 29.1 is deleted

Rule 30 is changed to:

30 STARTING PENALTIES

30.1 U Flag Rule

If flag U has been displayed, no part of team member A's hull or crew shall be in the triangle formed by the ends of the starting line and the first *mark* during the last minute before her starting signal. If team member A breaks this rule and is identified, her *team* shall be disqualified without a hearing, but not if the race is restarted or resailed.

30.2 Black Flag Rule

If a black flag has been displayed, no part of team member A's hull or crew shall be in the triangle formed by the ends of the starting line and the

first *mark* during the last minute before her starting signal. If team member A breaks this rule and is identified, her *team* shall be disqualified without a hearing, even if the race is restarted or resailed, but not if the race is *postponed* or *abandoned* before the starting signal. If a general recall is signaled or the race is *abandoned* after the starting signal, the race committee shall display her competition number before the next warning signal for that race, and if the race is restarted or resailed, her *team* shall not sail in it. If it does so, the disqualification shall not be excluded in calculating the *team's* series score.

30.3 Changeover

Before team member A finishes, no part of team member B's hull or crew shall be on the course side of the changeover starting line or one of its extensions. If team member B breaks this rule and is identified, her *team* shall be disqualified without a hearing, but not if the race is resailed.

Rule 31 is changed to:

31 TOUCHING A MARK

While racing, a kiteboard shall not touch a windward *mark*.

Rule 36 is changed to:

36 RACES RESTARTED OR RESAILED

If a race is restarted or resailed, a breach of a *rule* in the original race, or in any previous restart or resail of that race, shall not

- (a) prohibit a *team* from competing unless she has broken rule 30.2; or
- (b) cause a *team* to be penalized except under rule 2, 30.2, 69 or under rule 14 when she has caused injury, tangle or serious damage.

FR4 CHANGES TO THE RULES OF PART 4

41 OUTSIDE HELP

Add new rules 41(e) and 41(f):

- (e) help from another competitor in the same race to assist a relaunch;
- (f) help from the other kiteboard in her *team* provided electronic communication is not used.

Rule 42 is changed to:

42 PROPULSION

42.1 Basic Rule

Except when permitted in rule 42.2, a kiteboard shall compete by using only the wind and water to increase, maintain or decrease her speed.

42.2 Exceptions

- (a) A kiteboard may be propelled by unassisted actions of the competitor on the kiteboard.
- (b) A competitor may swim, walk or paddle while *capsized* or *recovering*, provided the kiteboard does not gain a significant advantage in the race.
- (c) Any means of propulsion may be used to help a person or another vessel in danger.

43 COMPETITOR CLOTHING AND EQUIPMENT

Rule 43.1(a) is changed to:

- (a) Competitors shall not wear or carry clothing or equipment for the purpose of increasing their weight. However, a competitor may wear a drinking container that shall have a capacity of at least one liter and weigh no more than 1.5 kilograms when full.

Rule 43.2 is deleted.

44 PENALTIES AT THE TIME OF AN INCIDENT

Rules 44.1 and 44.2 are changed to:

44.1 A kiteboard may take a One-Turn Penalty when she may have broken one or more rules of Part 2 or rule 31 in an incident while *racing*. Alternatively, the notice of race or sailing instructions may specify the use of the Scoring Penalty or some other penalty, in which case the specified penalty shall replace the One-Turn Penalty. However,

- (a) when a kiteboard may have broken a rule of Part 2 and rule 31 in the same incident, she need not take the penalty for breaking rule 31; and
- (b) if the kiteboard caused injury, serious damage or a tangle or gained a significant advantage in the race or series by her breach, her penalty shall be to retire.

44.2 One Turn Penalty

After getting well clear of other kiteboards as soon after the incident as possible, a kiteboard takes a One-Turn Penalty by promptly making one turn with her hull appendage in the water. The turn shall include one completed tack and one completed gybe. Forward motion shall be established between the tack and the gybe (or vice versa) with the competitor on the correct side of the hull in normal sailing position. When a kiteboard

takes the penalty at or near the finishing line, she shall sail completely to the course side of the line before *finishing*.

48 FOG SIGNALS AND LIGHTS; TRAFFIC SEPARATION SCHEMES

Rule 48.1 is deleted.

PART 4 RULES DELETED

Rules 45, 47, 49, 50, 51, 52 and 54 are deleted.

FR5 CHANGES TO THE RULES OF PART 5

SECTION A

PROTESTS; REDRESS; RULE 69 ACTION

[No changes]

SECTION B

HEARINGS AND DECISIONS

64 DECISIONS

Add new rule 64.1(d):

(d) when as a consequence of breaking a rule a kiteboard has caused a tangle, her *team* shall be scored RCT if she retired or DCT if she was disqualified. When a member of her *team* does this a second or subsequent time in the series, her *team's* penalty shall be DNE.

Rules 64.3(a) and 64.3(b) are changed to:

- (a) When the protest committee finds that deviations in excess of acceptable manufacturing tolerances were caused by damage or normal wear and do not improve the performance of the kiteboard, it shall not penalize her. However, the kiteboard shall not *race* again until the deviations have been corrected, except when the protest committee decides there is or has been no reasonable opportunity to do so.
- (b) When the protest committee is in doubt about any matter concerning the measurement of a kiteboard, the interpretation of a class rule, or a matter involving damage to a kiteboard, it shall refer its questions, together with the relevant facts, to an authority responsible for interpreting the rule. In making its

decision, the committee shall be bound by the reply of the authority.

SECTION D

APPEALS

[No changes]

FR6 CHANGES TO THE RULES OF PART 6

[No changes.]

FR7 CHANGES TO THE RULES OF PART 7

90 RACE COMMITTEE; SAILING INSTRUCTIONS; SCORING

The last sentence of rule 90.2(c) is changed to: Oral instructions may be given if the procedure is stated in the sailing instructions.

The last sentence of rule 90.3(a) is changed to: A race shall be scored if it is not abandoned and if one *team* sails the course in compliance with rule 28 and finishes within the time limit, if any, even if she retires after finishing or is disqualified.

FRA CHANGES TO APPENDIX A

The preamble to appendix A is changed to:

Teams shall be scored in races, in the order that their team member B crosses the finishing line. See rule 90.3.

Rule A11 is changed to:

A11 SCORING ABBREVIATIONS

These scoring abbreviations shall be used for recording the circumstances described:

DNC Did not *start*; did not come to the starting area

DNS Did not *start* (other than DNC)

UFD Disqualification under rule 30.1

BFD Disqualification under rule 30.2

OCS Disqualification under rule 30.3

SCP Scoring penalty applied

DNF Did not *finish*

RET Retired

RCT Retired after causing a tangle

DSQ Disqualification

DCT Disqualification after causing a tangle

DNE Disqualification that is not excludable

RDG Redress given

DPI Discretionary penalty imposed

FRG CHANGES TO APPENDIX G

Appendix G is changed to:

G1 IDENTIFICATION

Every kiteboard shall be identified as follows:

- (a) Each competitor shall be provided with a bib with a personal competition number of no more than three digits. The bib shall be worn as intended with the competition number clearly displayed.
- (b) The numbers shall be displayed as high as possible on the front, back and sleeves of the bib. They should be at least 25 cm tall on the front and the back and at least 10 cm tall on the sleeves.
- (c) The numbers shall be Arabic numerals, all of the same solid colour, clearly legible and in a commercially available typeface giving the same or better legibility as Helvetica. The colour of the numbers shall contrast with the colour of the bib.