

'HYDERABAD SAILING WEEK'
YAI SENIOR MULTI CLASS(RANKING) SAILING CHAMPIONSHIP - 2019
01 JUL TO 07 JUL 2019 AT HUSSAIN SAGAR LAKE, HYDERABAD

Organizing Authority: - EME Sailing Association, Secunderabad Sailing Club & Laser Class Association of India in association with Yachting Association of India (YAI).

SAILING INSTRUCTIONS

1 RULES

- 1.1 The regatta will be governed by the rules as defined in *The Racing Rules of Sailing (RRS)*.
1.2 No national prescriptions will apply.
1.3 In this sailing instructions, the notations;
1.3.1 **[SP]** denotes a rule for which a standard penalty may be applied by the race committee without a hearing or a discretionary penalty applied by the protest committee with a hearing. This changes rule 63.1 and A5.
1.3.2 **[NP]** denotes a rule that shall not be grounds for protest by a boat. This changes rule 60.1(a).
1.4 RRS Appendix B: Windsurfing Competition Rules will apply except B8.
1.5 The Equipment Rules of Sailing (ERS) will apply.
1.6 Decisions of the protest committee will be final as provided in rule 70.5.
1.7 If there is a conflict between a rule in the notice of race and a rule in the sailing instructions, the rule in the sailing instructions will take precedence. This changes rule 63.7.
1.8 If there is a conflict between languages the English text will take precedence.
1.9 **[DP] [NP]** From the second day of racing, the top 3 competitors in each class (based on their ranking after the first racing day), shall wear bibs as follows: 1st - Yellow, 2nd – Blue and 3rd - Red. These bibs will be provided by the Organizing Committee.

2 NOTICES TO COMPETITORS

Notices to competitors will be posted on the official notice board located near the race office at the EME Sailing Annexe. Documents governing the 2019 Hyderabad Sailing Week will be available at the website which is at <https://www.racingrulesofsailing.org/events/612>.

3 CHANGES TO SAILING INSTRUCTIONS

Any change to the Sailing Instructions will be posted on the notice board before 0800h on the day it will take effect, except that any change to the schedule of races will be posted by 1900h on the day before it will take effect.

4 SIGNALS MADE ASHORE

- 4.1 Signals made ashore will be displayed on the 'Flag Mast' in front of the race office, at the EME Sailing Association, EME Sailing Annexe.
4.2 When Flag AP is displayed ashore, '1 Minute' is replaced with 'not less than 15 minutes' in the race signal AP.
4.3 Rule 40 applies at all time while afloat except RS:X class.

5 SCHEDULE

- 5.1 The Schedule will be as follows:

Date	Event	Timing		Venue
		F/N	A/N	
01 to 02 Jul 19	Measurement & Registration	01 Jul 19 (0900h -1700h) 02 Jul 19 (0900h – 1400h)		EME Sailing Club
02 Jul 2019	Opening Ceremony	1400h onwards (Given timings to be followed strictly)		
02 Jul 2019	Practice Race	1600 hrs		Hussain Sagar Lake

Date	Event	Timings				Venue
		F/N		A/N		
		Race Area 1	Race Area 2	Race Area 1	Race Area 2	
03 Jul 2019	Racing Day -1	0830hrs Laser STD & Laser 4.7	0830hrs 470, 49er &49er FX	1400hrs Laser Radial	1400hrs Finn & RS:X	Hussain Sagar Lake
04 Jul 2019	Racing Day -2	0830hrs Laser Radial	0830hrs Finn & RS:X	1400hrs Laser STD & Laser 4.7	1400hrs 470, 49er &49er FX	
05 Jul 2019	Racing Day -3	0830hrs Laser STD & Laser 4.7	0830hrs 470, 49er &49er FX	1400hrs Laser Radial	1400hrs Finn & RS:X	
06 Jul 2019	Racing Day -4	0830hrs Laser Radial	0830hrs Finn & RS:X	1400hrs Laser STD & Laser 4.7	1400hrs 470, 49er &49er FX	
07 Jul 2019	Racing Day – 5	Reserve Racing Day for All Classes, if necessary			Prize distribution & Closing Ceremony	

- 5.2 Three races per class variant, per day will be sailed. One extra race per day may be sailed complying with instruction 3. Maximum number of races for each event will be 12.
- 5.3 The scheduled time of the first warning signal for the first race each day is 0825 hrs.
- 5.4 When more than one race is held on the same day, the warning signal for each succeeding race will be made as soon as practically possible. To alert boats that a race or sequence of races will begin soon, the orange starting line flag will be displayed for at least five minutes before a warning signal is displayed.
- 5.5 On the last scheduled day of racing, no warning signal will be made after 1200 hrs.
- 5.6 Daily coaches meeting will be held at 0730 hrs.

6 CLASS FLAGS

Class flags will be;

Class	Flag
Laser Standard	White flag with class insignia
Laser Radial	Green flag with class insignia
Laser 4.7	Yellow flag with class insignia
470	White flag with class insignia
49er	White flag with class insignia
49er FX	White flag with class insignia
RS:X	White flag with class insignia
FINN	White flag with class insignia

7 RACING AREAS

There will be two racing areas, Race Area I and Race Area II. Suggested location of racing areas are shown in Attachment-A.

8 THE COURSES

- 8.1 The diagrams in Attachment-B show the courses, including the approximate angles between legs, the order in which marks are to be passed, and the side on which each mark is to be left.
- 8.2 The course may be shortened to finish at a rounding mark as per rule 32.2(a) provided 3 or more legs have been sailed.
- 8.3 If there is only one mark in the gate position, this mark will be left to port.

9 MARKS

- 9.1 **Race Area I** Marks 1 & 2 will be orange colored marks and 3 will be red cylindrical mark; 4S/4P (Gate) will be pale orange cylindrical marks.
- 9.2 **Race Area-II**, Mark 1 will be pale orange cylindrical mark & 2S/2P (Gate) will be cylindrical yellow colored marks.
- 9.3 New mark will be a red colored pillar mark with black band.
- 9.4 Starting marks will be race committee vessel and a port end red mark.
- 9.5 Finishing marks will be a race committee vessel and pale orange dumpy mark.
- 9.6 A race committee vessel signaling a change of a leg of the course is a mark as provided in instruction 12.

10 AREAS THAT ARE OBSTRUCTIONS

- 10.1 Obstruction is marked with the help of blue colored drum and a small red flag. Budha Statue & its platform shall be considered as obstruction.
- 10.2 **[DP] [NP]** Competitors of Race Area II (RS:X, 49er, 49er FX & Finn) shall not interfere with Race Area I competitors on returning to shore after finishing their races. They will leave the Mark No 3 of Race Area I at adequate distance to port while returning to shore.

11 THE START

- 11.1 The race shall be started using rule 26 with the warning signal made 5 minutes before the starting signal.
- 11.2 The starting line will be between a staff displaying an orange flag on the race committee signal vessel at the starboard end and the course side of a cylindrical red mark or a staff displaying an orange flag on another race committee vessel at the port end.
- 11.3 **[DP] [NP]** Boats whose warning signal has not been made shall avoid the starting area during the starting sequence for other races.
- 11.4 A boat that does not start within 4 min after her starting signal will be scored DNS without hearing. This changes RRS A4 & A5.

12. CHANGE OF THE NEXT LEG OF THE COURSE

To change the next leg of the course, the race committee will lay a new mark (or move the finishing line) and remove the original mark as soon as practicable. When in a subsequent change a new mark is replaced, it will be replaced by an original mark.

13 THE FINISH

- 13.1 The finishing line will be between a staff displaying an orange flag on the race committee finish vessel and the course side of a pale orange dumpy mark.

14 PENALTY SYSTEM

- 14.1 Appendix P will apply.
- 14.2 **[DP] [NP]** A boat that has taken a penalty or retired under rule 31 or 44.1 shall complete an exoneration form at the race office within the protest time limit.
- 14.3 For the 49er & 49er Fx classes, RRS 44.1 and Appendix P2.1 penalties are changed so that the Two-Turns Penalty is replaced by One-Turn Penalty.

15 TIME LIMITS AND TARGET TIME

- 15.1 Time limits and target times (in minutes) are as follows;

Class	Time limit	Mk 1 time limit	Target time
Laser Std. & Radial	70	20	40
Laser 4.7	70	20	30
RS:X	50	20	30
470 & FINN	70	20	40
49er & 49er FX	60	20	30

- 15.2 Boats failing to finish within 10 minutes after the first boat of that class sails the course and finishes, shall be scored Did Not Finish (DNF). This changes Rule 35 and A4 & A5.

16 PROTESTS AND REQUESTS FOR REDRESS

- 16.1 A boat intending to protest, must inform the race committee finishing vessel immediately after finish or if this is not possible, the nearest Race Committee vessel.
- 16.2 Protest forms will be available at the race office. Protests shall be delivered there within the protest time limit.
- 16.3 Protest time limit is 45 minutes after the last boat has finished in the morning or evening session for the classes racing in that session, or RC signals no more racing for that session, whichever is later.

- 16.4 This time limit also applies to all protests by the race committee, protest committee and technical committee.
- 16.5 Notices will be posted no later than 30 minutes of the protest time limit to inform competitors of hearings in which they are party or named as witnesses. Hearings will be held at the EME SA Club lounge.
- 16.6 On the last day of racing, a request for redress based on a protest committee decision shall be delivered no later than 30 minutes after the decision was posted. This changes rule 62.2.
- 16.7 The Chairman of the Jury may appoint one or more panels in accordance with Appendix N1.4(a) and if a party or more is dissatisfied, they may call for a hearing under N1.1, N1.2, and N1.3 under N1.4(b). The request shall be delivered no later than 30 minutes after the party was informed of the decision that day.

17 SCORING

- 17.1 Six races will be required to be completed to constitute a championship.
- 17.2 (a) When 6 or fewer than 6 races have been completed, a boat's series score will be the total of her race scores.
 (b) When from 7 to 11 races have been completed, a boat's series score will be the total of her race scores excluding her worst score. This changes NOR12.1(b).
 (c) When 12 races have been completed, a boat's series score will be the total of her race scores excluding her two worst scores. This changes NOR12.1(c).
- 17.3 (a) The Laser Standard Rigs will race and be scored as one fleet. The relative placing in the total fleet will determine the placing in the specific category.
 (b) The Laser Radial Rigs will race and be scored as one fleet. The relative placing in the total fleet will determine the placing in the specific category.
 (c) The Laser 4.7 Rigs will race and be scored as one fleet. The relative placing in the total fleet will determine the placing in the specific category.
 (d) 470, RS:X, FINN, 49er & 49er FX classes will be scored separately.
- 17.4 The results of the Women Radial Rig category shall be determined by removing all non - female competitors' scores from race result. Similar method applies for Grand Masters, Masters, Apprentice, Youth (boys) and Youth (girls) category in all Laser rigs.

18 SAFETY REGULATIONS

18.1 [NP] [SP] Check-Out and Check-In Procedures:

- (a) Each boat shall personally Check-Out on the forms provided at the Beach Desk prior to launching but not later than the first scheduled warning signal of her race of that day.
- (b) After arriving ashore (even after the display of AP/H, AP/A, N/H, or N/A when no race has been completed after launching), each boat shall personally Check-In on the forms provided before the end of the protest time limit or within 30 minutes of the display of AP/H, N/H.
- (c) One penalty point will be added to the finishing position; in the first race of the day for failure to Check-Out and last race of the day for failure to Check-In.
- (d) Penalty points will be implemented by the race committee without a hearing. This changes rules 63.1 and A5.
- (e) Beach Desk will be located at Beach Master post HUT duly marked.
- 18.2 [DP] [NP] All competitors, except windsurfers, shall wear personal flotation devices at all times whilst afloat. This changes rule 40 and the preamble of Part 4.
 Windsurfers shall wear personal flotation devices when Flag Y is displayed on shore and on the race committee signal vessel.
- 18.3 Competitors who require assistance should so signify by blowing a whistle or waving their arms. The race committee reserves the right to assist competitors who, in the opinion of the race committee, require assistance regardless of the wishes of the competitor. This will not be subject to giving redress. This changes rule 62.1(a).
- 18.4 [NP] [DP] A boat that retires from a race shall notify the race committee as soon as possible. On return to shore, boats that have retired from any race shall also complete retirement declaration at the race office before the protest time limit.
- 18.5 Wet suits and dry suits are not personal floatation devices.

19. [NP] [DP] REPLACEMENT OF CREW OR EQUIPMENT

- 19.1 Substitution of competitors will not be allowed without prior written approval of the race committee.
- 19.2 Substitution of damaged or lost equipment will not be allowed unless authorized by technical committee. Requests for substitution shall be made to the technical committee at the first reasonable opportunity.

20 [NP] [DP] EQUIPMENT AND MEASUREMENT CHECKS

- 20.1 All competitors shall present their boats for scrutiny by the technical committee before the start of the event. Boats shall be presented fully rigged.
- 20.2 Measurements will take place at the boat park of EME Sailing Club.
- 20.3 Measurements outside these times may be allowed at the discretion of the technical committee.
- 20.4 A boat or equipment may be inspected at any time for compliance with class rules and sailing instructions. On the water, a boat can be instructed by technical committee to proceed immediately to a designated area for inspection.

21. [NP] [DP] EVENT ADVERTISING

Boats shall display event advertising as supplied by Organising Authority.

22. OFFICIAL VESSELS

- 22.1 Official vessels will be marked as follows:

Official vessel	Designation
Race committee vessels	Orange flag
Jury vessels	White flag with in black J
Technical committee vessel	White flag with TO in black.
PRO	White flag with PRO in black
Rescue vessels	White flag with R1, R2, R3, R4 in black.

23 SUPPORT VESSELS

- 23.1 [DP] Team leaders, coaches and support personnel shall stay minimum 50 meters away from the areas where boats are racing at all time, when racing of any class is under progress. Support vessels to be registered (without charges) and shall be marked with white flags at all time when afloat.
- 23.2 [DP] Support/Coach vessel shall be registered at race office/beach master. These vessels shall not launch until opening ceremony on 02nd Jul 2019. Non registered support vessels will not be allowed to launch from the event venue.
- 23.3 The Organizing Authority may, at its discretion refuse coach/support vessels' entry to the venue if they are deemed unsuitable.

24 [DP] [NP] TRASH DISPOSAL

See rule 55. Boats shall not intentionally put trash on the water. Trash may be placed aboard support and official vessels.

25 [DP] [NP] RADIO COMMUNICATION

Except in an emergency, a boat that is racing shall not make or receive radio/data transmission including text messages.

26 PRIZES

Prizes will be given as stated in the Notice of Race. Organizing Authority may carry out any addition or deletion as deemed appropriate.

27 DISCLAIMER OF LIABILITY

Competitors participate in the regatta entirely at their own risk. See rule 4, Decision to Race. The organising authority or any of its office bearers will not accept any liability for material damage or personal injury or death sustained in conjunction with or prior to, during, or after the regatta on water or on shore.

28 [DP] [NP]INSURANCE

Personal accident and death insurance is the sole responsibility of each competitor. Also, each participating boat is wholly and exclusively responsible for third party liability insurance on the boat he or she is sailing.

29 [DP] [NP]MEDIA INTERACTION

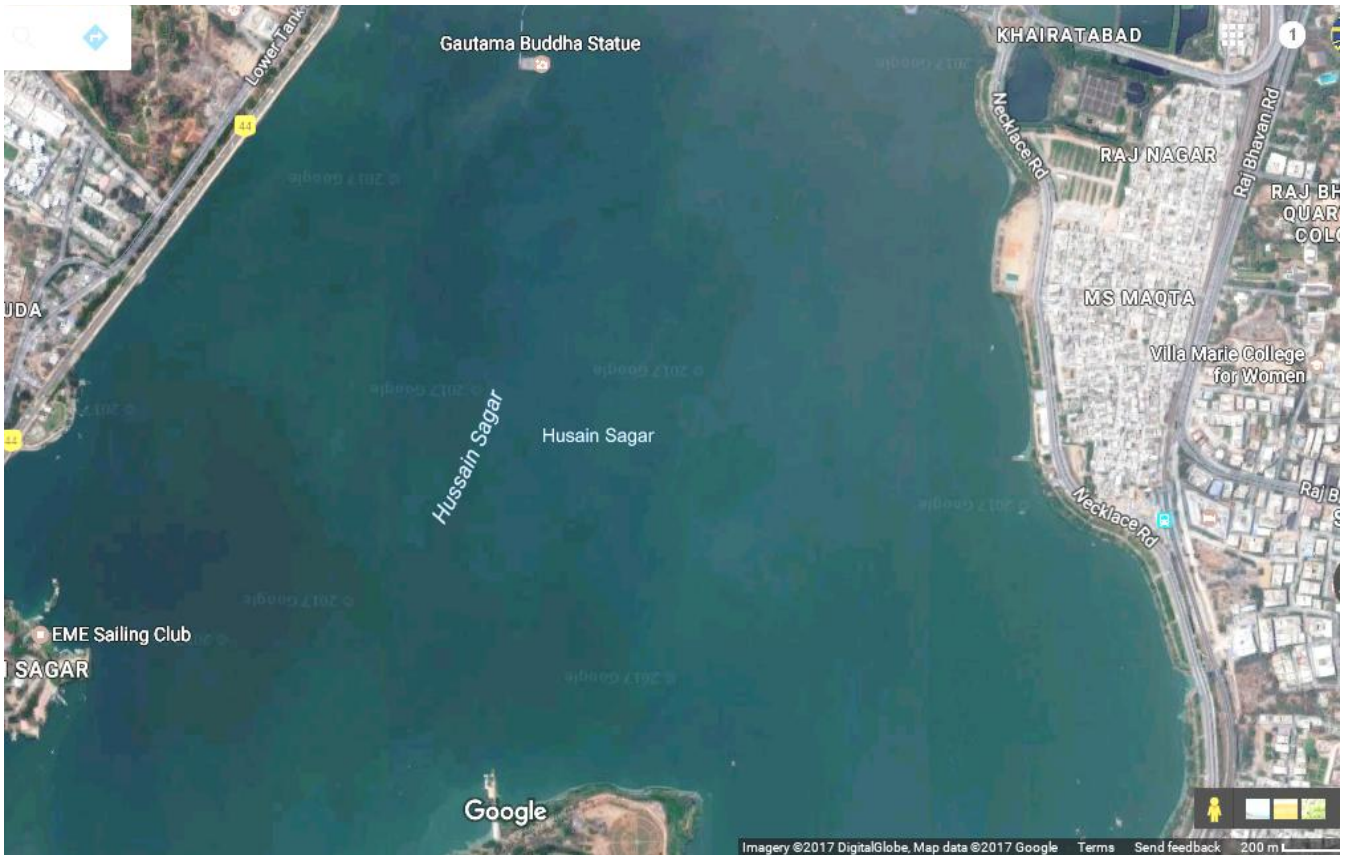
29.1 Attendance for media interaction at EME Sailing Club House at the conclusion of racing on each day is compulsory for all boats finishing in the top three/five positions.

29.2 Presence of all competitors and registered coaches is compulsory for daily prize distribution at end of each day, for Opening/Closing and during photographs of competitors & officials with guest & dignitaries. Official event T-shirt to be worn for photograph during Opening Ceremony.

30 [DP] [NP]BOATS AND EQUIPMENTS

All competitors shall use only one hull, sail, mast and boom, centerboard and rudder, which shall be identified during measurement.

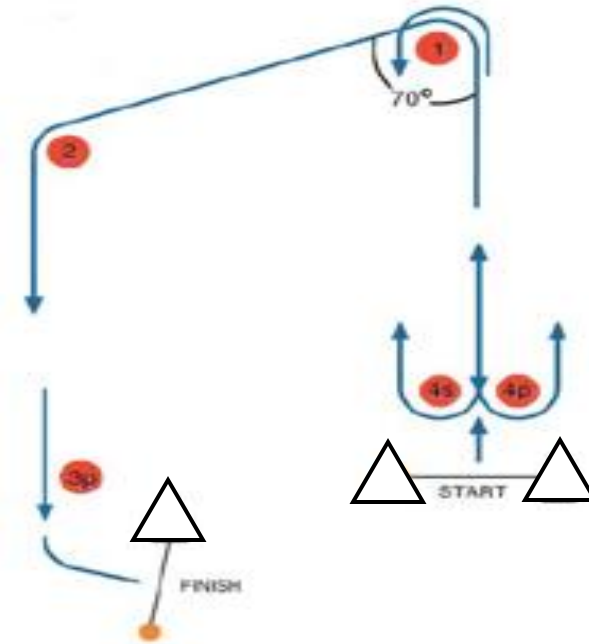
Attachment - A



RACE COURSE AREA - I

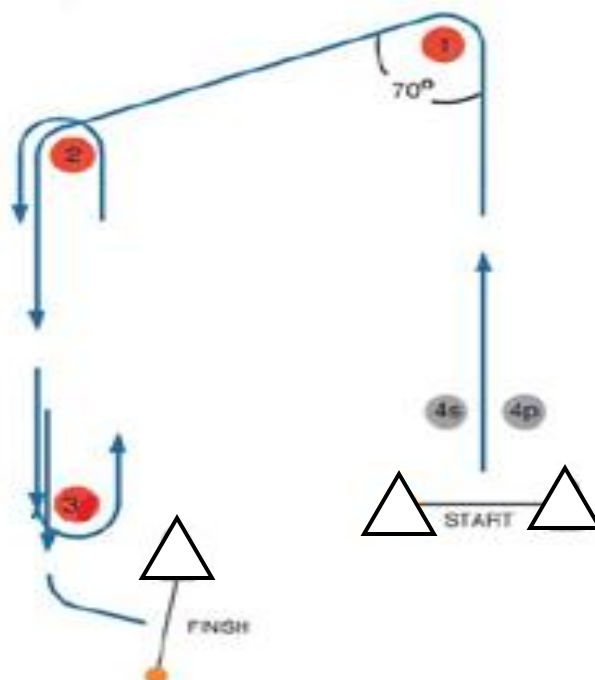
Laser STD & Radial Class

Mark Rounding Order: Start - 1 - 4S/4P - 1 - 4S/4P - 1 - 2 - 3 - Finish



Laser 4.7

Mark Rounding Order : Start - 1 - 2 - 3 - 2 - 3 - Finish



RACE COURSE AREA - II

470, 49er, 49er FX & Finn Class

Mark Rounding Order: Start – 1 – 2S/2P – 1 – 2S/2P – 1 – 2S/2P – Finish

RS:X Class

Mark Rounding Order: Start – 1 – 2S/2P – 1 – 2S/2P – Finish

