

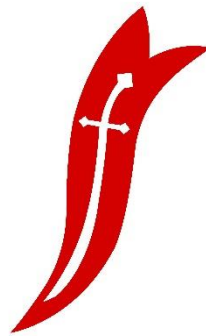


2019 AUSTRALIAN SABRE CHAMPIONSHIP

5 - 11 JANUARY 2019

SAILING INSTRUCTIONS

Inclusive of Amendment No. 1 (05/01/2019)



ORGANISING AUTHORITY
ROYAL QUEENSLAND YACHT SQUADRON (RQYS)
SABRE SAILING ASSOCIATION OF QLD INC. (SSAQ)



WATERLOO BAY
HOTEL



QUANTUMSAILS™
TO THE NEXT CHALLENGE.



DINGHY SHOP.COM.AU



The Notation '[DP]' in a Rule in the Sailing Instructions means that the penalty for a breach of that rule may, at the discretion of the Protest Committee, be less than disqualification.
The notation '[SP]' in a Rule in the Sailing Instructions means that a Standard Penalty applies for a breach of that Rule.

1. RULES

- 1.1. The regatta will be governed by the rules as defined in The Racing Rules of Sailing.
- 1.2. The Special Regulations of Australian Sailing Inc. (AS) Addendum A - Part 2 shall apply.
- 1.3. Sabre class rule shall apply.
- 1.4. The racing rules of sailing (RRS) will be modified in accordance with RRS 86 as follows: RRS 41, Outside Help, will be replaced by: A boat may receive outside help as provided for in RRS 1.1 and, in addition, where the Organising Authority (OA) deems that the vessel and its crew require assistance in order to right a capsized vessel and/or return its crew to the vessel in order to continue racing.
- 1.5. These Sailing Instructions shall supersede the Notice of Race at any conflict between them.
- 1.6. Appendix T shall apply.

2. NOTICES TO COMPETITORS

- 2.1. Notices to competitors shall be posted on the Official Notice Board which is online, available at: <https://www.rqys.com.au/sailingnoticeboard/>

3. CHANGES TO THE SAILING INSTRUCTIONS

- 3.1. Any change to the Sailing Instructions shall be posted before 0900hrs on the day it will take effect, except any change to the Schedule of Races which shall be posted by 1900hrs on the day before it will take effect.

4. SIGNALS MADE ASHORE

- 4.1. Signals made ashore will be displayed on an official flag pole located on the Bill Kirby Wharf near the VIP docks.
- 4.2. When Flag 'AP' is displayed ashore, '1 minute' is replaced with 'not less than 45 minutes' in the race signal 'AP'.

5. SCHEDULE OF RACES

- 5.1. The schedule of racing and events shall be as per below:

DATE	EVENT	TIME
Saturday 5 January 2019	Registration	1200 to 1600 hours
Sunday 6 January 2019	Registration Briefing Session Invitation Race Welcome Night BBQ in BBQ area	0930 to 1045 hours 1100 hours 1300 hours 1730 hours
Monday 7 January 2019	Racing (2 – 3 races)	1330 hours
Tuesday 8 January 2019	Racing (2 – 3 races)	1305 hours
Wednesday 9 January 2019	No Racing	
Thursday 10 January 2019	Racing (2 – 3 races)	1305 hours
Friday 11 January 2019	Racing (2 races)	1305 hours
	Presentation Function on Ceremony Lawn and Boardwalk Cafe	1700 Hours

- 5.2. The maximum number of races in this regatta shall be nine (9).
- 5.3. Races are scheduled for each day except for the 9 January when there shall be no racing.





- 5.4. Extra races may be sailed if races are behind schedule.
- 5.5. No more than three (3) races will be conducted on any race day, except for the last scheduled race day when a maximum of two (2) races may be sailed. Any change is to be made in accordance with the Sailing Instructions.
- 5.6. There shall be no warning signal made after 1500 hours on the last scheduled day of racing.
- 6. CLASS FLAGS**
- 6.1. The class flag shall be a white flag with a red Sabre insignia.
- 7. COURSE AREA**
- 7.1. The course will be located in the vicinity of the Manly Harbour, on the Northern Course area, as shown in **Attachment 1**.
- 8. COURSES**
- 8.1. The courses to be sailed, the order in which marks are to be passed and the side to which each mark is to be left, are shown in **Attachment 2**.
- 8.2. No later than the warning signal, the Race Committee signal boat will display the approximate compass bearing of the first leg and the course to be sailed.
- 8.3. Boat shall not cross through the start or finish lines unless they are starting a race (start line) or finishing a race (finish line).
- 9. MARKS**
- 9.1. Refer to **Attachment 2**.
- 10. THE START**
- 10.1. The start line shall be between a staff displaying an orange flag displayed on the port side of the Race Committee Start Boat and the Start Pin mark on the port side of the Race Committee Start Boat, as shown in **Attachment 2**.
- 10.2. Races will be started by using rule 26 with the warning signal made 5 minutes before the starting signal.
- 10.3. A boat starting later than 4 minutes after her starting signal will be scored Did Not Start without a hearing. This changes rule A4.
- 11. CHANGE TO THE NEXT LEG OF THE COURSE**
- 11.1. To change the next leg of the course, the Race Committee shall insert an additional mark to the course, which shall be the Change Mark (refer to **Attachment 2**).
- 11.2. To make another change the Change Mark shall be replaced by the original mark.
- 12. THE FINISH**
- 12.1. The finish line shall be between a staff displaying a blue flag on the starboard side of the Race Committee Start Boat and the Finish Pin mark on the starboard side of the Race Committee Start Boat, as shown in **Attachment 2**.
- 13. TIME LIMITS AND TARGET TIMES**
- 13.1. The Time Limit for the first boat shall be 70 minutes.
- 13.2. The Target Time shall be 50 minutes.
- 13.3. Boats failing to cross the finish line within 20 minutes after the first boat sails the course and finishes, shall be scored Did Not Finish (DNF) without a hearing. This changes rules 35, A4 and A5.
- 14. PROTESTS AND REQUESTS FOR REDRESS**
- 14.1. Protest forms shall be available from the Regatta Office.
- 14.2. Protests and requests for redress or reopening shall be delivered there within the appropriate time limit.
- 14.3. The protest limit shall be sixty (60) minutes after the last boat has finished the last race of the day, which shall be posted as soon as possible after racing on the Official Notice Board.
- 14.4. Notices will be posted no later than thirty (30) minutes after the protest time limit to inform competitors of hearings in which they are parties or named as witnesses. Hearings shall be held in a location and a time to be advised on the notice.



WATERLOO BAY
HOTEL



DINGHY SHOP.COM.AU



- 14.5. Notices of protests by the Race Committee shall be posted to inform boats under rule 61.1(b).
- 14.6. Breaches of instructions 10.3, 16, 19, 21 and 22 shall not be grounds for a protest by a boat. This changes rule 60.1(a). Penalties for these breaches may be less than disqualification if the protest committee decides so. The scoring abbreviation for a discretionary penalty imposed under this instruction shall be DPI.
- 14.7. Breaches of Sailing Instructions marked [DP] and [SP] will not be grounds for protest by a boat. This changes RRS 60.1(a).
- 14.8. On the last scheduled day of racing a request for reopening a hearing shall be delivered;
- (a) within the protest time limit if the requesting party was informed of the decision on the previous day;
- (b) no later than thirty (30) minutes after the requesting party was informed of the decision on that day. This changes rule 66.
- 14.9. On the last scheduled day of racing a request for redress based on a protest committee decision shall be delivered no later than 30 minutes after the decision was posted. This changes rule 62.2.

15. SCORING

- 15.1. Scoring shall be as per RRS Appendix A – Low Scoring System.
- 15.2. Five (5) races shall constitute a series.
- 15.3. There shall be a maximum of nine (9) races in this Championships.
- 15.4. (a) When ~~(DELETE) fewer than~~ five (5) ~~(INSERT) or less~~ races have been completed, a boat's series score shall be the total of her race scores.
- (b) When from six (6) to ~~(DELETE) eight (8)~~ ~~(INSERT) seven (7)~~ races have been completed, a boat's series score shall be the total of her race scores excluding her worst score.
- (c) When ~~(DELETE) nine (9)~~ ~~(INSERT) eight (8)~~ or more races have been completed, a boat's series score shall be the total of her race scores excluding her two (2) worst scores.

16. SAFETY REGULATIONS

- 16.1. The sign-on / sign-off desk shall be located at the Regatta Office and shall be available two (2) hours prior to the first scheduled warning signal of the day, each day.
- 16.2. Before leaving the beach, each sailor shall be signed-on prior to the first warning signal of the first race they shall compete in. [DP]
- 16.3. Sailors shall sign-off within the protest time limit. [DP]
- 16.4. A boat that retires from a race shall advise the Race Committee as soon as possible. [DP]
- Competitors shall comply with the following harbour bylaws, particularly;
- a) All sailing vessels shall give way to powered vessels at all times whilst inside the Manly Boat Harbour. Once outside the Manly Boat Harbour, competitors are to as soon as possible stay outside of the main channel, keeping clear of powered vessels. [DP]

17. REPLACEMENT OF CREW OR EQUIPMENT

- 17.1. Substitution of competitors shall not be allowed.
- 17.2. Substitution of damaged or lost equipment shall not be allowed unless authorised by the Race Committee. The request for substitution shall be lodged by filling out the Request for Equipment Substitution form, available from the Regatta Office, and lodging it with the Race Committee.

18. EQUIPMENT AND MEASUREMENT CHECKS [DP]

- 18.1. A boat or equipment may be inspected at any time for compliance with the class rules and sailing instructions.

19. ADVERTISING [DP]

- 19.1. Competitors may be required to display bow numbers or the event sponsors logo. These shall be provided by the organising authority at the scheduled Registration with any instructions for their fitting. Advertising shall be in accordance with World Sailing Regulation 20.

20. OFFICIAL BOATS

- 20.1. Official boats shall display a white flag marked with black letters 'RC'.
- 20.2. Media boats shall display a white flag marked with black letters spelling 'MEDIA'.



WATERLOO BAY
HOTEL



DINGHY SHOP .COM.AU



21. COACH AND SUPPORT BOATS [DP]

- 21.1. Coach and Support boats shall stay outside areas where boats are racing from the time of the preparatory signal for the first fleet to start, until all boats have finished or retired or the Race Committee signals a postponement, general recall or abandonment. Such restricted areas are defined as follows: not closer than 50 meters to any boat racing (except a boat in distress requiring assistance) or to a mark, layline or rhumbline, and inside the course. Until the starting signal, coach boats shall be at least 100 meters to leeward of the starting line or its extensions. See diagrams in **Attachment 2**. They shall not communicate with boats while racing, except in case of emergency. If a support boat, when it is inside the restricted area, fails to keep clear and to leeward of all boats while racing, she may be excluded from the restricted area by the Race Committee without prior warning and without a hearing for the remaining part of the race in progress and/or for the subsequent race(s). The Race Committee may request the protest committee to conduct a hearing to investigate any alleged breach of SI 21 and the protest committee may apply a penalty to any competing boat associated with the offending support boat.
- 21.2. Should there be a long postponement the Race Committee will lower the orange flag, support boats may re-enter the restricted area and resume communication with the boats. Support boats shall stay outside the restricted area at all times when boats are racing.
- 21.3. Coach and Support boats shall register online and see the registration desk to collect their numbered sticker, prior to the first scheduled race of the series, providing details of their boats. Coach and Support boats while afloat must display numbered identification supplied by the Organising Authority. This identification is obtained upon registration. [DP]
- 21.4. Coach and Support boats shall not enter the restricted area during the racing unless given prior approval by the Race Committee in charge of the respective race area. Such approval will be for one day at a time and may be cancelled by the Race Committee at its discretion at any time.
- 21.5. If flag V is displayed by the Race Committee, and accompanied by a VHF broadcast, all Coach and Support boats must become rescue boats and may enter the course area. No coach boat is to leave the water until all sailors are accounted for and directed by the Race Committee.
- 21.6. All Coach and Support boats must have capability to communicate on VHF Channel 72 and must maintain a listening watch at all times on race days when going to, returning from, or on the race course.

22. RUBBISH DISPOSAL [DP]

- 22.1. Boats shall not put rubbish in the water. Rubbish may be placed aboard support and race committee boats.

23. RADIO COMMUNICATION

- 23.1. Except in an emergency, a boat shall neither make radio transmissions while racing nor receive radio communications not available to all boats. This restriction also applies to mobile telephones.

24. PRIZES

- 24.1. Prizes shall be awarded as follow:

- | | |
|--|------------|
| • Open | 1st to 5th |
| • Ladies Champion | 1st to 3rd |
| • Youth Champion (Under 18 years) | 1st to 3rd |
| • Seniors Champion (18 – 39 years) | 1st to 3rd |
| • Masters Champion (40 - 49 years) | 1st to 3rd |
| • Grand Masters Champion (50 - 59 years) | 1st to 3rd |
| • Veterans Champion (60 - 69 years) | 1st to 3rd |
| • Grand Veterans Champion (70+ years) | 1st to 3rd |
- Where only four (4) boats have sailed in an above category, 1st and 2nd prize will be awarded
 - Where only three (3) boats have sailed in an above category, 1st prize will be awarded
 - Over 90 kg's 1st
 - Under 60 kg's 1st
 - Other prizes may be awarded at the discretion of the Organising Authority.



WATERLOO BAY
HOTEL



DINGHY SHOP .COM.AU



25. DISCLAIMER OF LIABILITY

25.1. Competitors participate in the regatta entirely at their own risk. See rule 4, Decision to Race. The organizing authority will not accept any liability for material damage or personal injury or death sustained in conjunction with or prior to, during, or after the regatta.

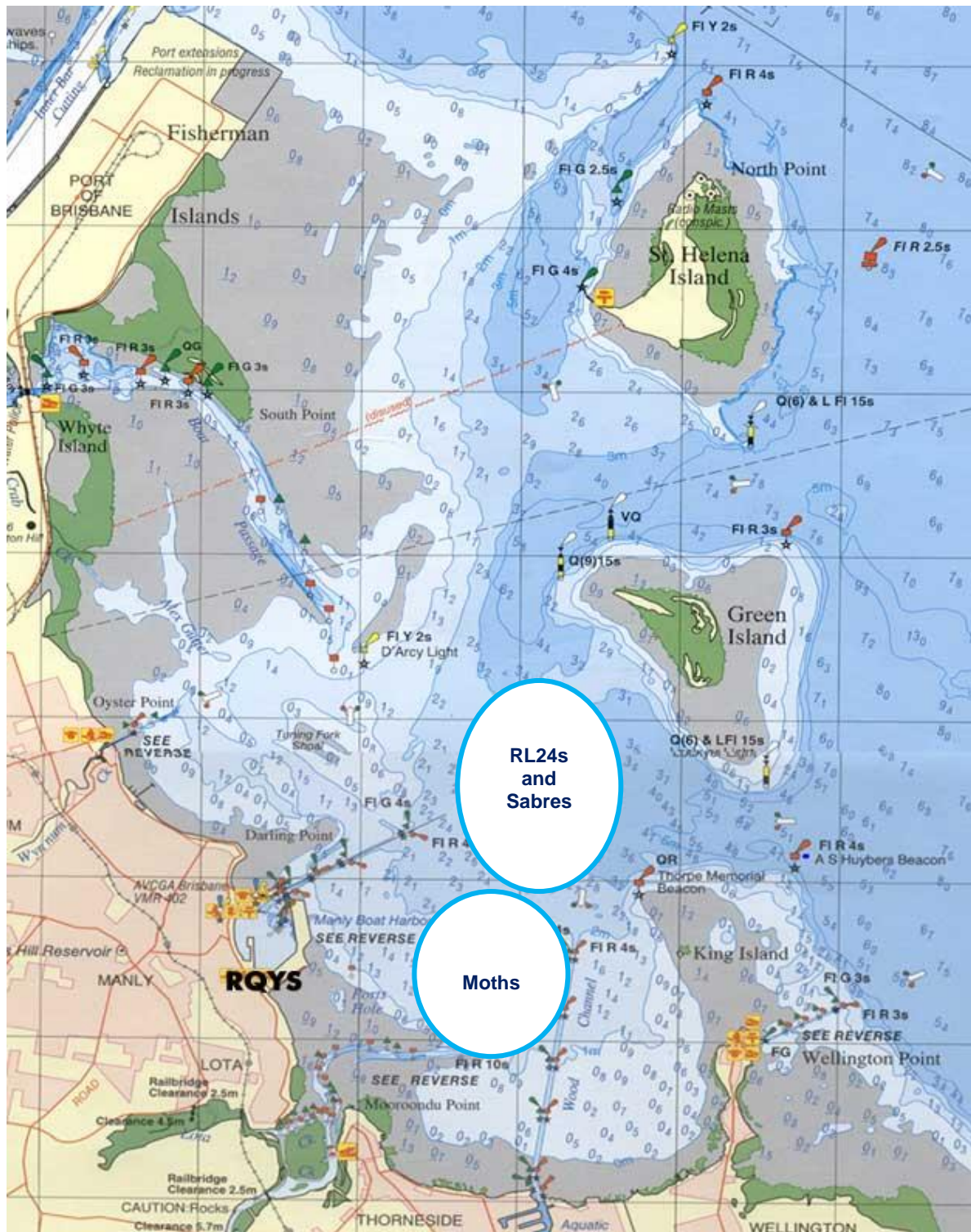
26. INSURANCE

26.1. Each participating boat shall be insured with valid third-party liability insurance with a minimum cover of \$10,000,000 AUD per event or the equivalent.





ATTACHMENT 1 – RACING AREAS



WATERLOO BAY HOTEL



DINGHY SHOP .COM.AU



ATTACHMENT 2 – COURSES

Note: The RL24 Australian Championship will be using the same course area as the Sabre Australian Championship. Sabre Mark 1/Top Mark will be the INNER and PURPLE inflatable mark, whereas the RL24 Mark 1/Top Mark will be the further-Windward inflatable mark.

CODE	COURSE	MARK DESCRIPTIONS
T2	Start - 1 - 2 - 3 - 1 - 3 - Finish	Start and Finish Pins: Orange Teardrops Marks 1 and 2: Purple Inflatables
T3	Start - 1 - 2 - 3 - 1 - 3 - 1 - 2 - 3 - Finish	Mark 3: Orange Inflatable Change Mark: Yellow Mark with Black Band (Sabres) Yellow Mark (RL24s)

