



2019 AUSTRALIAN MOTH CHAMPIONSHIP
7 – 11 JANUARY 2019
SAILING INSTRUCTIONS



ORGANISING AUTHORITY
ROYAL QUEENSLAND YACHT SQUADRON (RQYS)
INTERNATIONAL MOTH CLASS ASSOCIATION OF AUSTRALIA (IMCA Australia)



The Notation '[DP]' in a Rule in the Sailing Instructions means that the penalty for a breach of that rule may, at the discretion of the Protest Committee, be less than disqualification.
 The notation '[SP]' in a Rule in the Sailing Instructions means that a Standard Penalty applies for a breach of that Rule.

1. RULES

- 1.1. The regatta will be governed by the rules as defined in The Racing Rules of Sailing.
- 1.2. The [International Moth Class Association \(IMCA\) class rules](#) shall apply.
- 1.3. These Sailing Instructions shall supersede the Notice of Race at any conflict between them.
- 1.4. Appendix T shall apply.

2. NOTICES TO COMPETITORS

- 2.1. Notices to competitors shall be posted on the Official Notice Board which is online, available at: <https://www.rqys.com.au/sailingnoticeboard/>

3. CHANGES TO THE SAILING INSTRUCTIONS

- 3.1. Any change to the Sailing Instructions shall be posted before 0900hrs on the day it will take effect, except any change to the Schedule of Races which shall be posted by 1900hrs on the day before it will take effect.

4. SIGNALS MADE ASHORE

- 4.1. Signals made ashore will be displayed on an official flag pole located on the Bill Kirby Wharf near the VIP docks.
- 4.2. When Flag 'AP' is displayed ashore, '1 minute' is replaced with 'not less than 30 minutes' in the race signal 'AP'.

5. SCHEDULE OF RACES

- 5.1. The schedule of racing and events shall be as per below:

Date	Event	Time
Sunday 6 January 2019	Early Registration	1100 – 1300 hours
Monday 7 January 2019	Registration at Regatta Office	0900 hours – 1100 hours
	Competitor briefing in RQYS Auditorium	1100 hours
	Championship Races	1300 hours First Warning
Tuesday 8 January 2019	Championship Races	1300 hours First Warning
Wednesday 9 January 2019	Championship Races	1300 hours First Warning
Thursday 10 January 2019	Championship Races	1300 hours First Warning
Friday 11 January 2019	Championship Races	1300 hours First Warning
	Presentation on Ceremony Lawn	After Racing

Fifteen (15) races are scheduled for this regatta.

- 5.2. Three (3) races are scheduled for each day. One (1) extra race each day may be sailed if races are behind schedule.
- 5.3. There shall be no warning signal made after 1500 hours on the last scheduled day of racing.

6. CLASS FLAGS

- 6.1. The class flag shall be a white flag with a black moth insignia.

7. COURSE AREA

- 7.1. The course will be located in the vicinity of the Manly Harbour, on the Southern Course area, as shown in **Attachment 1**.

8. COURSES

- 8.1. The courses to be sailed, the order in which marks are to be passed and the side to which each mark is to be left, are shown in **Attachment 2**.
- 8.2. No later than the warning signal, the Race Committee signal boat will display the approximate compass bearing of the first leg and the course to be sailed.

9. MARKS

- 9.1. Refer to **Attachment 2**.



9.2. If there is a mark missing, boats shall assume to round to Port.

10. THE START

- 10.1. The start line shall be between a staff displaying an orange flag displayed on the port side of the Race Committee Start Boat and the Start Pin mark on the port side of the Race Committee Start Boat, as shown in **Attachment 2**.
- 10.2. Races will be started by using rule 26 with the warning signal made 5 minutes before the starting signal.
- 10.3. A boat starting later than 4 minutes after her starting signal will be scored Did Not Start without a hearing. This changes rule A4.

11. CHANGE TO THE NEXT LEG OF THE COURSE

- 11.1. There shall be no change of course during a race. This changes rule 33.

12. THE FINISH

- 12.1. The finish line shall be between a staff displaying a blue flag on the Race Committee Start Boat and the Finish Pin mark as shown in **Attachment 2**.
- 12.2. When the leader crosses the finish line the Race Committee shall make a sound signal and fly a conspicuous Pink flag at which point all boats may finish their current lap and be scored accordingly i.e. in a 3-lap race, all boats that have completed three (3) laps shall be scored ahead of boats that have finished only two (2) laps. See SI 16.

13. PENALTY SYSTEM

- 13.1. Rule 44.1 is changed so that the Two-Turns Penalty is replaced by the One-Turn Penalty.

14. TIME LIMITS AND TARGET TIMES

- 14.1. The Time Limit for the first boat shall be 30 minutes.
- 14.2. The Finish Window for all other boats shall be 15 minutes after the first boat.
- 14.3. The Target Time shall be 20 minutes.
- 14.4. Boats failing to cross the finish line within 15 minutes after the first boat sails the course and finishes, shall be scored behind the last boat that finished within finish window, according to their relative positions at the previous bottom gate mark. Boats having completed three (3) laps shall be scored ahead of those who have only completed two (2) laps who shall be scored ahead of those who have only completed one (1) lap, otherwise they shall be scored Did Not Finish (DNF) without a hearing. This changes rules 35, A4 and A5.

15. PROTESTS AND REQUESTS FOR REDRESS

- 15.1. Protest forms shall be available from the Regatta Office.
- 15.2. Protests and requests for redress or reopening shall be delivered there within the appropriate time limit.
- 15.3. The protest limit shall be sixty (60) minutes after the last boat has finished the last race of the day, which shall be posted as soon as possible after racing on the Official Notice Board.
- 15.4. Notices will be posted no later than thirty (30) minutes after the protest time limit to inform competitors of hearings in which they are parties or named as witnesses. Hearings shall be held in a location and a time to be advised on the notice.
- 15.5. Notices of protests by the Race Committee shall be posted to inform boats under rule 61.1(b).
- 15.6. Breaches of instructions 10.3, 17, 20, 22, and 23 shall not be grounds for a protest by a boat. This changes rule 60.1(a). Penalties for these breaches may be less than disqualification if the protest committee decides so. The scoring abbreviation for a discretionary penalty imposed under this instruction shall be DPI.
- 15.7. Breaches of Sailing Instructions marked [DP] and [SP] will not be grounds for protest by a boat. This changes RRS 60.1(a)
- 15.8. On the last scheduled day of racing a request for reopening a hearing shall be delivered
- (a) within the protest time limit if the requesting party was informed of the decision on the previous day;
- (b) no later than thirty (30) minutes after the requesting party was informed of the decision on that day. This changes rule 66.
- 15.9. On the last scheduled day of racing a request for redress based on a protest committee decision shall be delivered no later than 30 minutes after the decision was posted. This changes rule 62.2.

16. SCORING

- 16.1. Three (3) races shall constitute a series.
- 16.2. The Grand Prix (Lapped Finish) procedure shall be used. Boats that fail to cross the finish line within/during the Finishing Time Window, will get a score based on their position the last time they rounded the leeward gate/mark provided that they'd completed one (1) Lap. If a boat after the Finishing



Time Window has opened sails one (1) more lap, this will not count as a completed lap in the scoring. This changes RRS 28.1 and A4. Refer to SI 14.4.

16.3. There shall be a maximum of fifteen (15) races in this Championships.

16.4. (a) When fewer than six (6) races have been completed, a boat's series score shall be the total of her race scores.

(b) When from seven (7) to ten (10) races have been completed, a boat's series score shall be the total of her race scores excluding her worst score.

(c) When eleven (11) or more races have been completed, a boat's series score shall be the total of her race scores excluding her two (2) worst scores.

17. SAFETY REGULATIONS

17.1. The sign-on / sign-off desk shall be located at the Regatta Office and shall be available two (2) hours prior to the first scheduled warning signal of the day, each day.

17.2. Before leaving the beach, each sailor shall be signed-on prior to the first warning signal of the first race they shall compete in. [DP]

17.3. Sailors shall sign-off within the protest time limit. [DP]

17.4. Boats failing to comply with SI 17.1 and 17.2 shall be penalised without a hearing by the addition of three (3) places, but not worse than a DNF score, to their score for the first race of the day which they did not sign-on for or the last race of the day which they did not sign-off for. This changes RRS 63.1 and A5. [SP]

17.5. A boat that retires from a race shall advise the Race Committee as soon as possible. [DP]

Competitors shall comply with the following harbour bylaws, particularly:

(a) All sailing vessels shall give way to powered vessels at all times whilst inside the Manly Boat Harbour. Once outside the Manly Boat Harbour, competitors are to as soon as possible stay outside of the main channel, keeping clear of powered vessels. [DP]

18. REPLACEMENT OF CREW OR EQUIPMENT

18.1. Substitution of competitors shall not be allowed.

18.2. Substitution of damaged or lost equipment shall not be allowed unless authorised by the Race Committee. The request for substitution shall be lodged by filling out the Request for Equipment Substitution form, available from the Regatta Office, and lodging it with the Race Committee.

19. EQUIPMENT AND MEASUREMENT CHECKS [DP]

19.1. A boat or equipment may be inspected at any time for compliance with the class rules and sailing instructions.

20. ADVERTISING [DP]

20.1. Competitors may be required to display bow numbers or the event sponsors logo. These shall be provided by the organising authority at the scheduled Registration with any instructions for their fitting. Advertising shall be in accordance with World Sailing Regulation 20.

21. OFFICIAL BOATS

21.1. Official boats shall display a white flag marked with black letters 'RC'.

21.2. Media boats shall display a white flag marked with black letters spelling 'MEDIA'.

22. COACH AND SUPPORT BOATS [DP]

22.1. Coach and Support boats shall stay outside areas where boats are racing from the time of the preparatory signal for the first fleet to start, until all boats have finished or retired or the Race Committee signals a postponement, general recall or abandonment. Such restricted areas are defined as follows: not closer than 50 meters to any boat racing (except a boat in distress requiring assistance) or to a mark, layline or rhumbline, and inside the course. Until the starting signal, coach boats shall be at least 100 meters to leeward of the starting line or its extensions. See diagrams in **Attachment 2**. They shall not communicate with boats while racing, except in case of emergency. If a support boat, when it is inside the restricted area, fails to keep clear and to leeward of all boats while racing, she may be excluded from the restricted area by the Race Committee without prior warning and without a hearing for the remaining part of the race in progress and/or for the subsequent race(s). The Race Committee may request the protest committee to conduct a hearing to investigate any alleged breach of SI 24 and the protest committee may apply a penalty to any competing boat associated with the offending support boat.

22.2. Should there be a long postponement the Race Committee will lower the orange flag, support boats may re-enter the restricted area and resume communication with the boats. Support boats shall stay outside the restricted area at all times when boats are racing.



- 22.3. Coach and Support boats shall register online and see the registration desk to collect their numbered sticker, prior to the first scheduled race of the series, providing details of their boats. Coach and Support boats while afloat must display numbered identification supplied by the Organising Authority. This identification is obtained upon registration. [DP]
- 22.4. Coach and Support boats shall not enter the restricted area during the racing unless given prior approval by the Race Committee in charge of the respective race area. Such approval will be for one day at a time and may be cancelled by the Race Committee at its discretion at any time.
- 22.5. If flag V is displayed by the Race Committee, and accompanied by a VHF broadcast, all Coach and Support boats must become rescue boats and may enter the course area. No coach boat is to leave the water until all sailors are accounted for and directed by the Race Committee.
- 22.6. All Coach and Support boats must have capability to communicate on VHF Channel 72 and must maintain a listening watch at all times on race days when going to, returning from, or on the race course.

23. RUBBISH DISPOSAL [DP]

- 23.1. Boats shall not put rubbish in the water. Rubbish may be placed aboard support and race committee boats.

24. RADIO COMMUNICATION

- 24.1. Except in an emergency, a boat shall neither make radio transmissions while racing nor receive radio communications not available to all boats. This restriction also applies to mobile telephones.

25. PRIZES

- 25.1. Prizes shall be awarded as follow:
- 1st placed Australian – 2019 Australian Champion
 - 1st to 3rd places – Open Championship
 - 1st Australian Female
 - First Corinthian – Helm must meet criteria for ISAF Group 1 Classification (Amateur) and boat must register to use just 1 mast, sail and foil set for the entire event.
 - First sailor with boat older than 5 years (on first day of the event)
 - 1st Australian Junior Master (aged 40-45 years of age, based on your age at the end of the calendar year (31 Dec) in which the event starts).
 - 1st Australian Master (aged 45-54 years of age, based on your age at the end of the calendar year (31 Dec) in which the event starts)
 - 1st Australian Grand Master (aged 55 years of age or older, based on your age at the end of the calendar year (31 Dec) in which the event starts)
 - 1st Australian Junior (aged 18 years of age or younger, based on your age at the end of the calendar year (31 Dec) in which the event starts)
 - 1st Australian Non-Foiler
 - Other prizes may be awarded at the discretion of the Organising Authority.

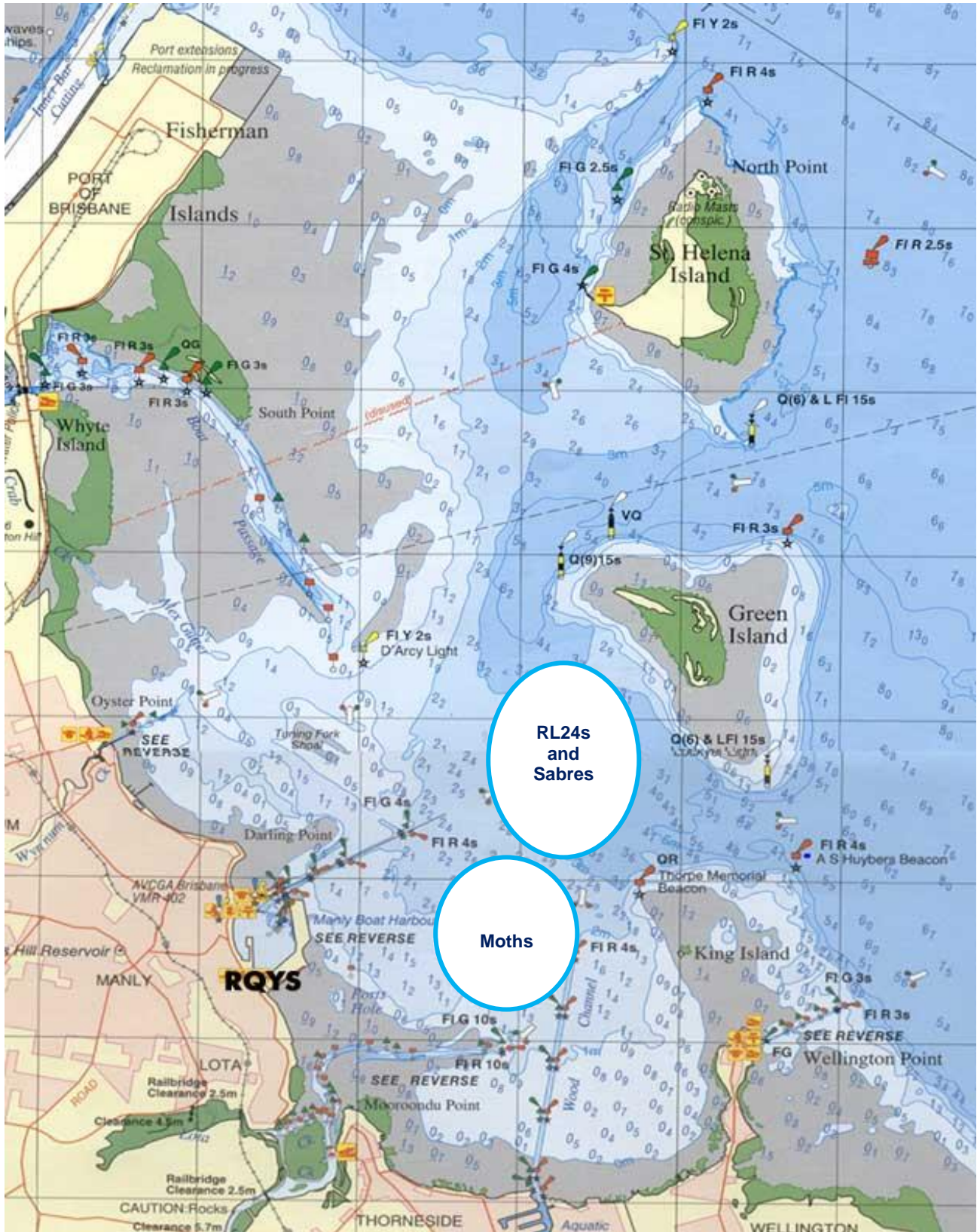
26. DISCLAIMER OF LIABILITY

- 26.1. Competitors participate in the regatta entirely at their own risk. See rule 4, Decision to Race. The organizing authority will not accept any liability for material damage or personal injury or death sustained in conjunction with or prior to, during, or after the regatta.

27. INSURANCE

- 27.1. Each participating boat shall be insured with valid third-party liability insurance with a minimum cover of \$10,000,000 AUD per event or the equivalent.

ATTACHMENT 1 – RACING AREAS



ATTACHMENT 2 – COURSES

CODE	COURSE	MARK DESCRIPTIONS
W1	Start – 1s/1p – 2s/2p – Finish	Start and Finish Pins Orange Teardrops Marks 1s, 1p, 2s and 2p Orange Inflatables
W2	Start – 1s/1p – 2s/2p – 1s/1p – 2s/2p – Finish	
W3	Start – 1s/1p – 2s/2p – 1s/1p – 2s/2p – 1s/1p – 2s/2p – Finish	

