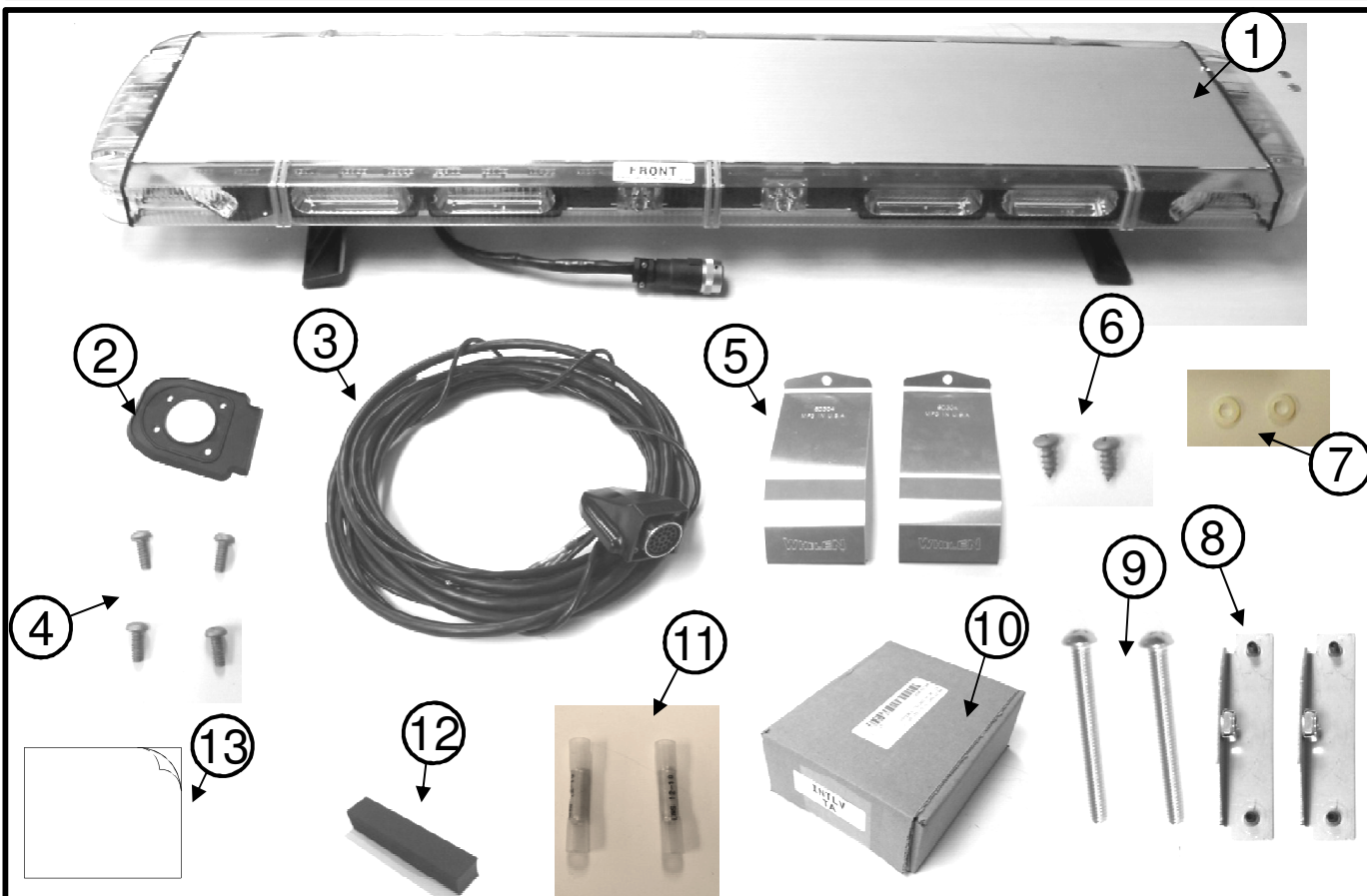




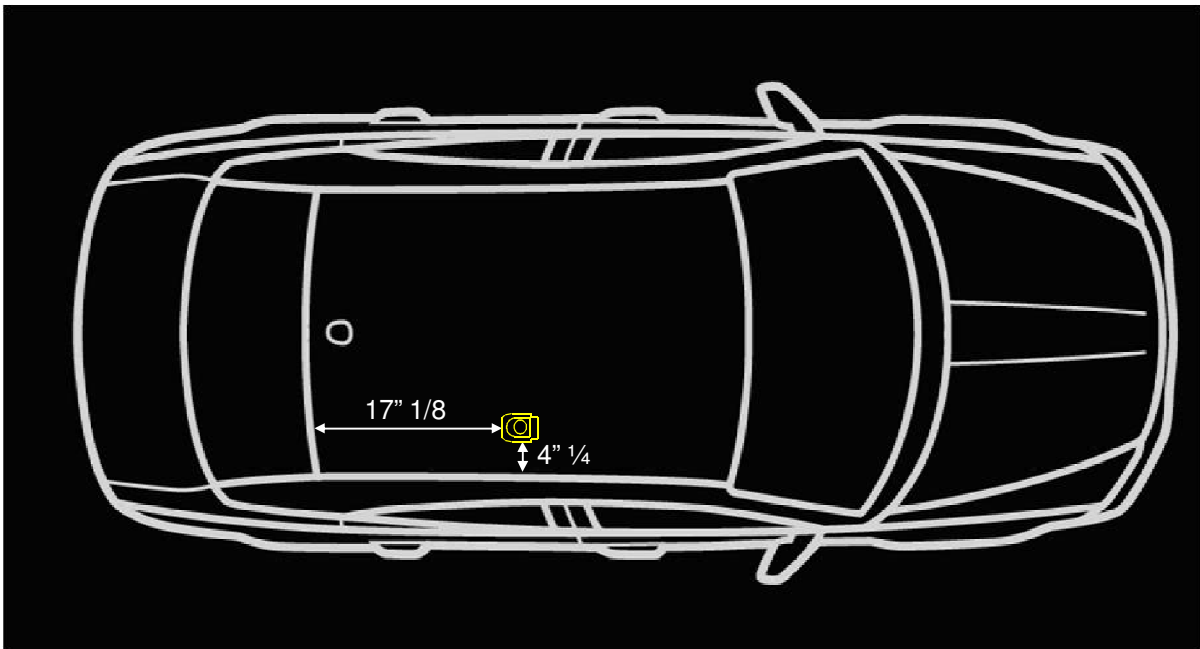
Light Bar Full Width Lights

DODGE CHARGER



Item	Qty	Description
1	1	Light bar
2	1	Socket grommet
3	1	Light bar wiring with connector
4	4	Screw M2.9 X 10 S437
5	2	Mounting bracket
6	2	Screw #10 X 1/2 MAGNI 565
7	2	#10 6/6 Nylon flat washer
8	2	Light bar bracket
9	2	3" Phillips bolt
10	1	WE CAN controller module box
11	2	Butt connector 10/12 AWG yellow
12	2	Foam pad
13	2	Anti-abrasion tape

1. Refer to official Chrysler procedure to remove and install OEM parts listed in this procedure.
2. Disconnect and isolate the negative battery terminal
3. Remove primary weather stripping from front and rear passenger side door frames.
4. Remove the seat back from the rear seat.
5. Remove the rear passenger side kick plate.
6. Remove upper and lower c-pillars on passenger side.
7. Remove rear passenger side grab handle.
8. Disengage the head liner at the rear passenger side corner.

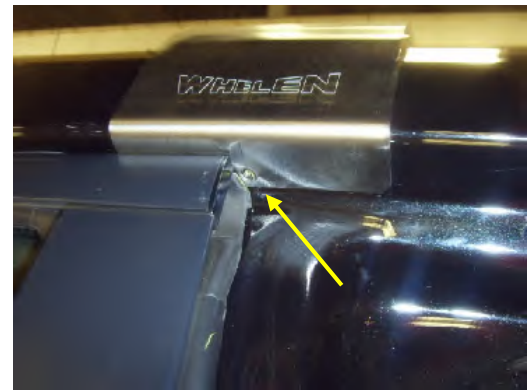


9. Place grommet (item 2) on roof according to the schematic.
10. Mark five hole locations on the roof.
11. Drill four holes 5/32" diameter
12. Drill center hole 1/4" diameter, then expand hole to 1" diameter.
Caution: Use drill stop to avoid headliner damage.
13. Apply Mopar® anticorrosion to drilled holes and let dry for 10 min.

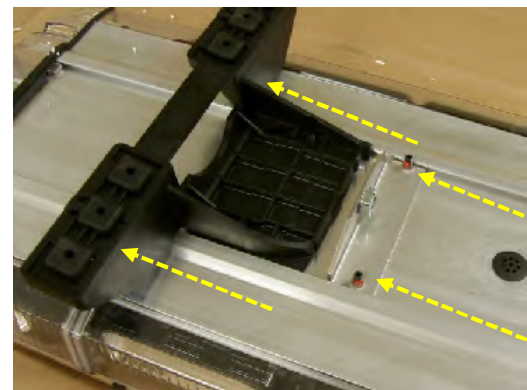
14. Feed wiring (item 3) through socket grommet (item 2) to position grommet under the connector.
15. Feed both wires (item 3) through the center hole on roof inside the vehicle.
16. Apply Mopar® windshield and glass sealant to the wire grommet.
17. Apply Mopar® windshield and glass sealant under and over of the socket grommet
18. Secure socket with 4 screws (item 4) from under the roof.
19. Using a mounting bracket (item 5) mark hole locations at the right and left b-pillar upper section by positioning the bracket between the rear door and the roof panel so that the hole is aligned to the front edge of the rear door as shown. Picture 2.
20. Remove the mounting bracket and drill one hole 1/8" diameter on each side apply Mopar® anticorrosion and let dry for 10 min.
21. Adjust light bar feet by loosening the allen key bolts and slide them along the light bar channel to separate them from each other until both feet seat flush to the roof edge on each side. Tighten allen key bolts securely. Repeat this step with the brackets (item 8), slide brackets against feet on each side and secure tightly. Picture 3
22. Adhere anti-abrasion tape (item 13) to the RH & LH roof sides so that its position is centered under the mounting bracket when installed. Place light bar (item 1) in position on roof and secure the bracket to each side of the roof, using one phillips screw (item 6) and one nylon washer (item 7) per mounting bracket. Tighten securely. Picture 4.



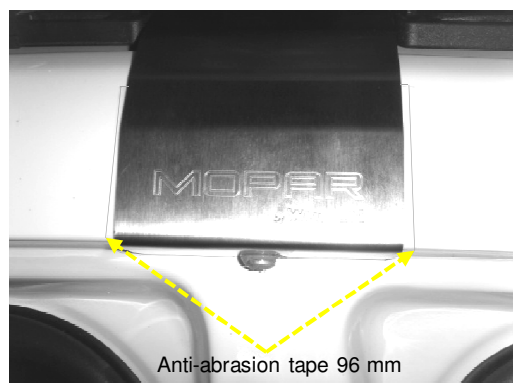
1.



2.

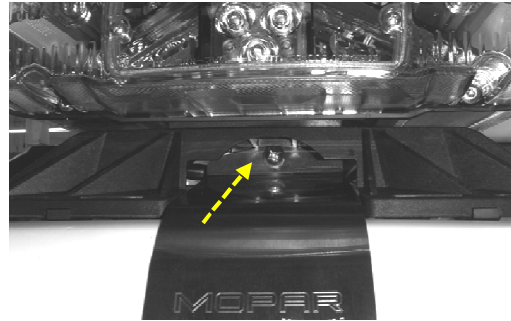


3.

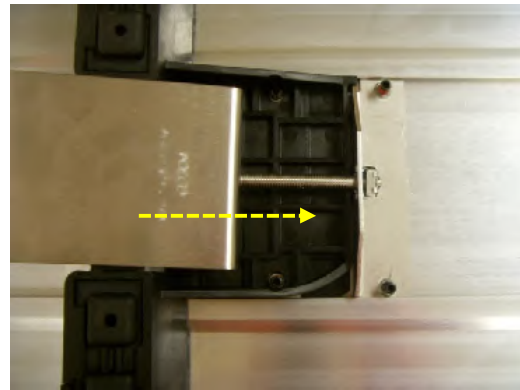


4.

23. Using one bolt (item 9), secure light bar to mounting brackets on each side. Tighten securely. Picture 5 & 6.
24. Inside the vehicle, route both wires towards the c-pillar.
Warning: both wires must be routed behind the air bag.
25. Continue routing the cable containing the green and grey wires through the rear seat reinforce towards the trunk.
26. Connect the green and gray wires to the CAN control P/N 82213014 (if equipped). Use green connector included in CAN control kit, install green wire on the ctrl head side and grey wire to USB port side, none in the middle. Cut and isolate bare wire.
27. For vehicles not equipped with CAN control, refer to WECAN controller module (item 10) instructions.
28. Locate the light bar wiring from main harness P/N 1322019 under the intermediate c-pillar cover on the passenger side.
29. Adjust the length of the wiring and cut the excess from the main harness and light bar.
30. Connect individually red to red and black to black from main harness to light bar wiring using two butt connector (item 11)
31. Connect light bar to roof connector. Picture 7.
32. Clean the underside of the mounting bracket, line up one foam pad (item 12) flush to the front edge and adhere it to each mounting bracket. Picture 8.
33. Connect battery negative terminal.
34. Reinstall headliner.
35. Reinstall upper and lower c-pillars panels on the passenger side.
36. Reinstall the rear passenger side kick plate.
37. Reinstall the rear seat back..
38. Reinstall primary weather stripping to the passenger side front and rear door frames.



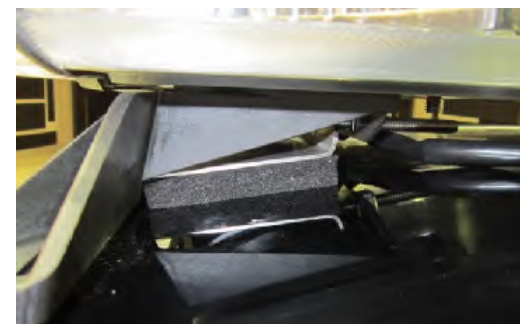
5.



6.



7.



8.

