

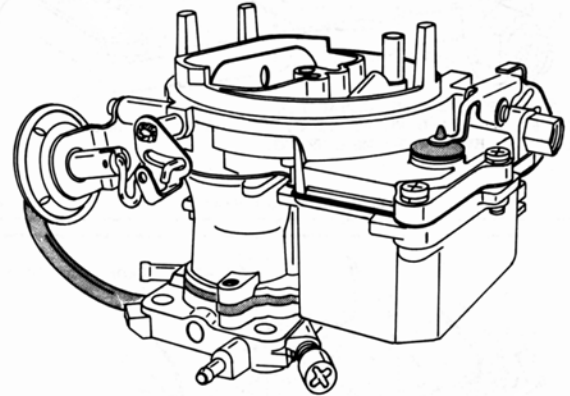
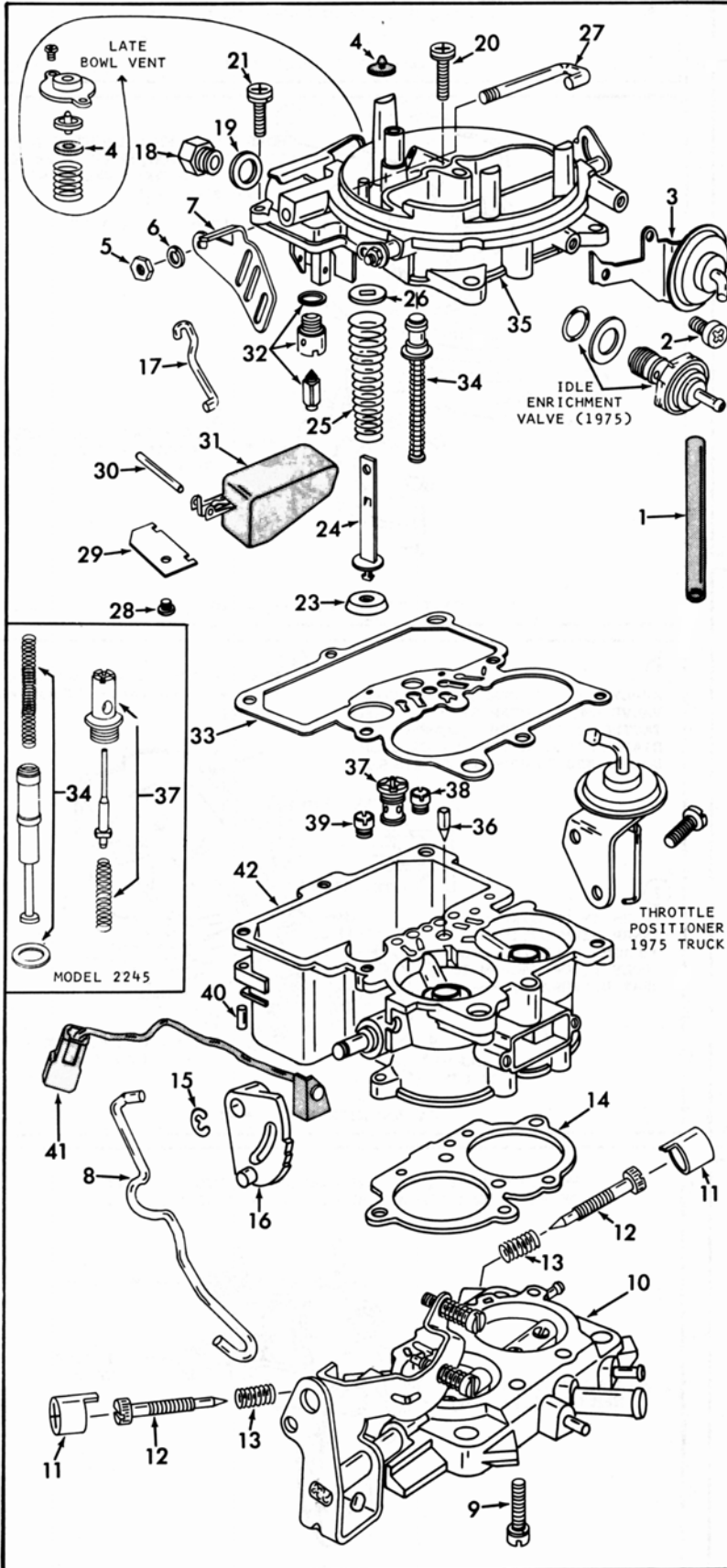
INSTRUCTION SHEET

OFF VEHICLE CARBURETOR SERVICE

HOLLEY MODEL — 2210, 2245

GENERAL EXPLODED VIEW

THE GENERAL DESIGN AND PARTS SHOWN WILL VARY TO INDIVIDUAL UNITS COVERED ON THIS INSTRUCTION SHEET



DISASSEMBLY

USE EXPLODED VIEWS AS A GUIDE. THE NUMERICAL SEQUENCE MAY GENERALLY BE FOLLOWED TO DISASSEMBLE UNIT FAR ENOUGH TO PERMIT CLEANING AND INSPECTION. CAUTION: MAIN WELL TUBES ARE NOT REMOVABLE TAKE EXTREME CARE SO AS NOT TO BEND OR DAMAGE TUBES.

NOTE: REMOVE STAKING FROM BOWL COVER FOR EASY REMOVAL OF POWER PISTON ASSEMBLY (34). USE SLOTTED SCREW DRIVER TO REMOVE POWER VALVE ASSEMBLY (37). DO NOT REMOVE IDLE LIMITER CAPS (11) UNLESS NEW ONES ARE AVAILABLE.

NOMENCLATURE

REF. NO.	REF. NO.
1. HOSE-CHOKE VACUUM	21. SCREW & LOCKWASHER (7)-BOWL COVER
2. SCREW (2)-CHOKE DIAPHRAGM BRACKET	22. BOWL COVER ASSEMBLY
3. CHOKE DIAPHRAGM AND LINK ASSY.	23. CUP-PUMP
4. VALVE-BOWL VENT	24. PUMP STEM
5. NUT-PUMP LEVER	25. SPRING-PUMP DRIVE
6. LOCKWASHER-PUMP LEVER	26. WASHER-PUMP SPRING
7. LEVER-PUMP	27. PUMP LEVER SHAFT
8. LINK-PUMP	28. SCREW & LOCKWASHER-FUEL BOWL BAFFLE
9. SCREW & LOCKWASHER (5)-THROTTLE BODY	29. FUEL BOWL BAFFLE
10. THROTTLE BODY ASSEMBLY	30. PIN-FLOAT HINGE
11. CAP- IDLE LIMITER	31. FLOAT & LEVER ASSEMBLY
12. NEEDLE- IDLE ADJUSTING	32. NEEDLE, SEAT & GASKET ASSY.
13. SPRING- IDLE ADJ. NEEDLE	33. GASKET-BOWL COVER
14. GASKET-THROTTLE BODY	34. PISTON ASSY.-POWER VALVE
15. RETAINER-FAST IDLE CAM	35. BOWL COVER
16. CAM-FAST IDLE	36. NEEDLE-PUMP DISCHARGE
17. LINK-FAST IDLE CAM	37. VALVE ASSY.-POWER
18. FITTING-FUEL INLET	38. JET-(63)-MAIN (CHOKE-SIDE)
19. GASKET-FUEL INLET FITTING	39. JET-(65)-MAIN (PUMP-SIDE)
20. SCREW & LOCKWASHER (1)-BOWL COVER (LONG)	40. PIN-WIRE RETAINER
	41. STOP & CABLE ASSEMBLY
	42. BOWL-FUEL

CLEANING

CLEANING MUST BE DONE WITH CARBURETOR DISASSEMBLED. SOAK PARTS LONG ENOUGH TO SOFTEN AND REMOVE ALL FOREIGN MATERIAL. USE (1) A CARBURETOR CLEANING SOLVENT, (2) LACQUER THINNER OR (3) DENATURATED ALCOHOL. MAKE CERTAIN THE THROTTLE BODY IS FREE OF ALL HARD CARBON DEPOSITS. WASH OFF IN SUITABLE SOLVENT. BLOW OUT ALL PASSAGES IN CASTINGS WITH COMPRESSED AIR AND CHECK CAREFULLY TO INSURE THOROUGH CLEANING OF OBSCURE AREAS.

CAUTION: DO NOT SOAK PARTS CONTAINING RUBBER AND CERTAIN PLASTIC MATERIAL SUCH AS: (1)-(3)-(4)-(31)-(41)

REASSEMBLY

REASSEMBLE IN THE REVERSE ORDER OF DISASSEMBLY. NOTE SPECIAL INSTRUCTIONS AND FOLLOW NUMERICAL OUTLINE IN MAKING ADJUSTMENTS

SPECIAL INSTRUCTIONS

MAIN JET INSTALLATION (EARLY MODELS) - INSTALL LEAN JET (38) ON CHOKE SIDE OF BOWL AND RICHER JET (39) ON PUMP SIDE.

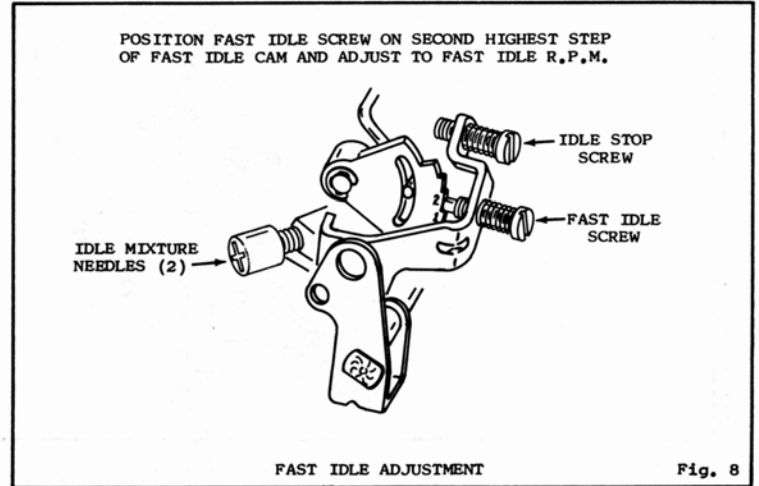
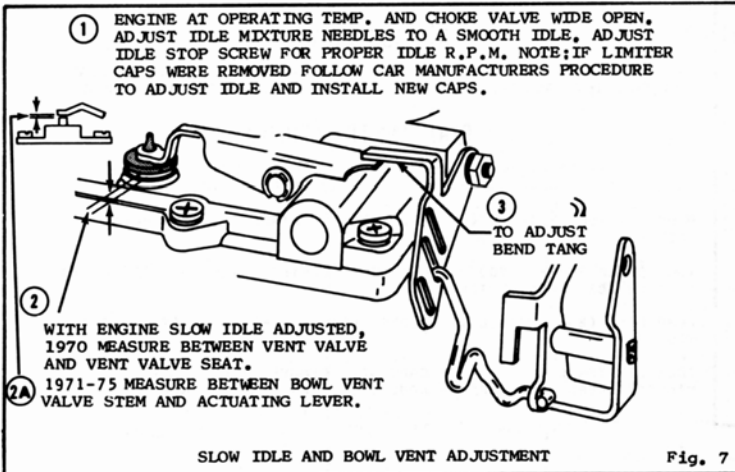
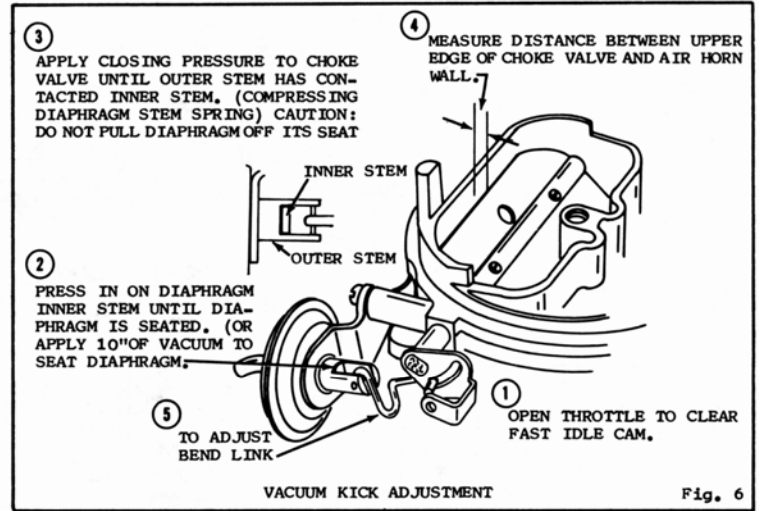
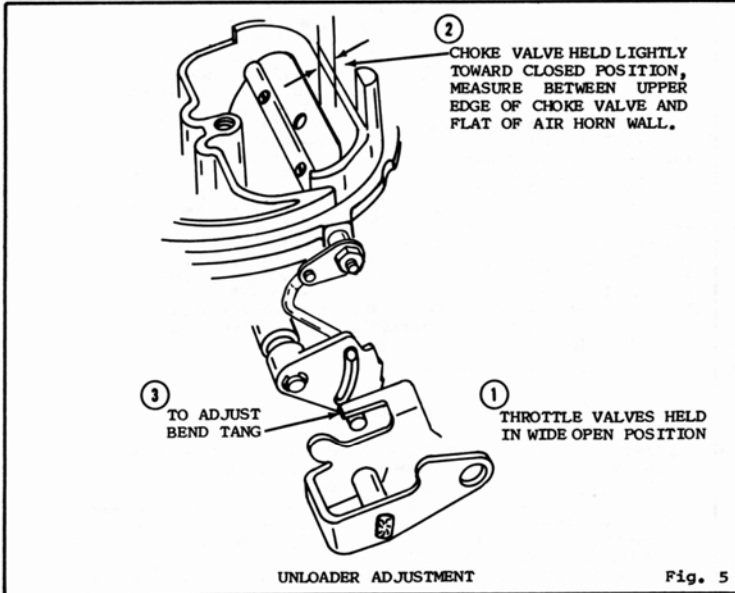
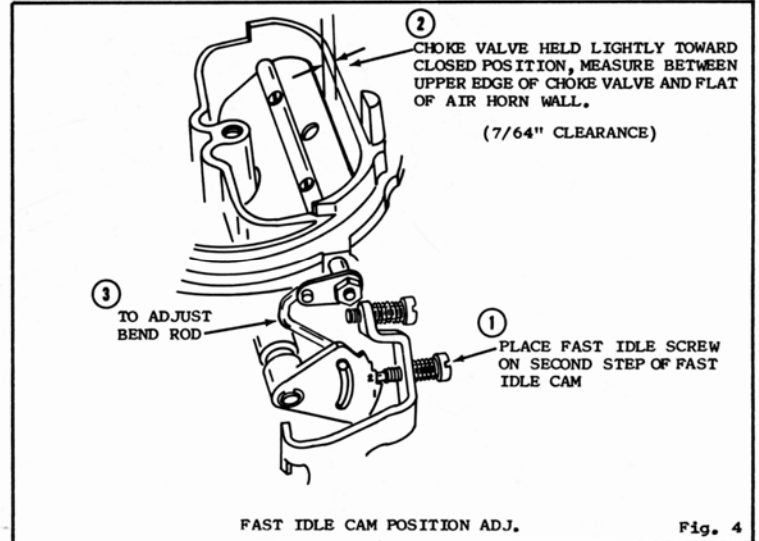
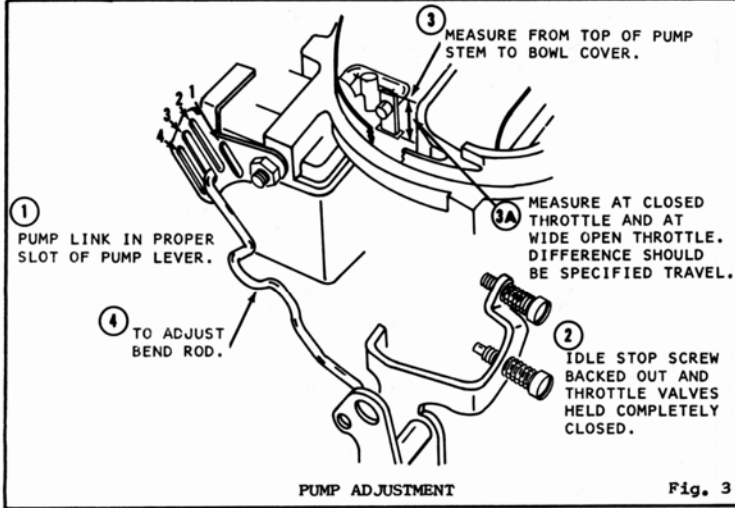
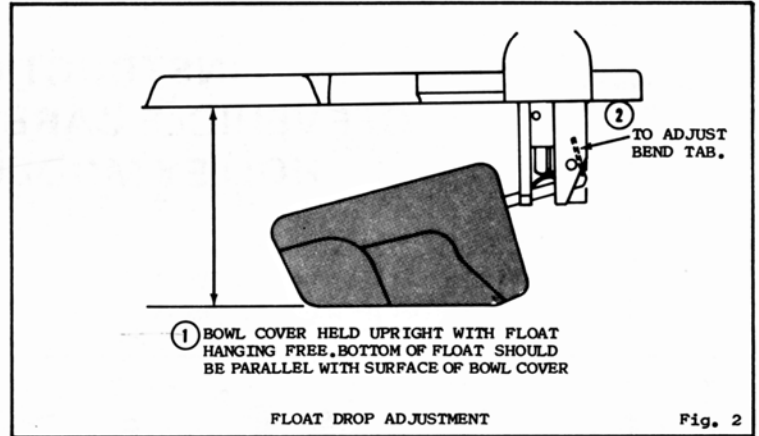
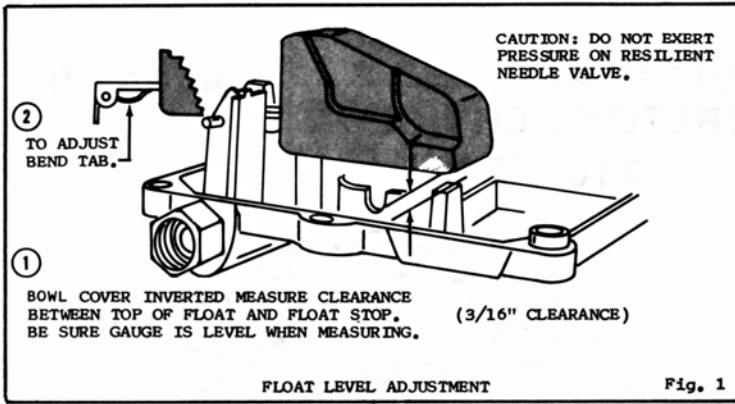
POWER PISTON INSTALLATION (34) - LIGHTLY STAKE CASTING AROUND WASHER.

BOWL COVER SCREWS (20)(21) - START AT CENTER SCREW AND TIGHTEN TO 25 INCH LBS. FROM CENTER OUT.

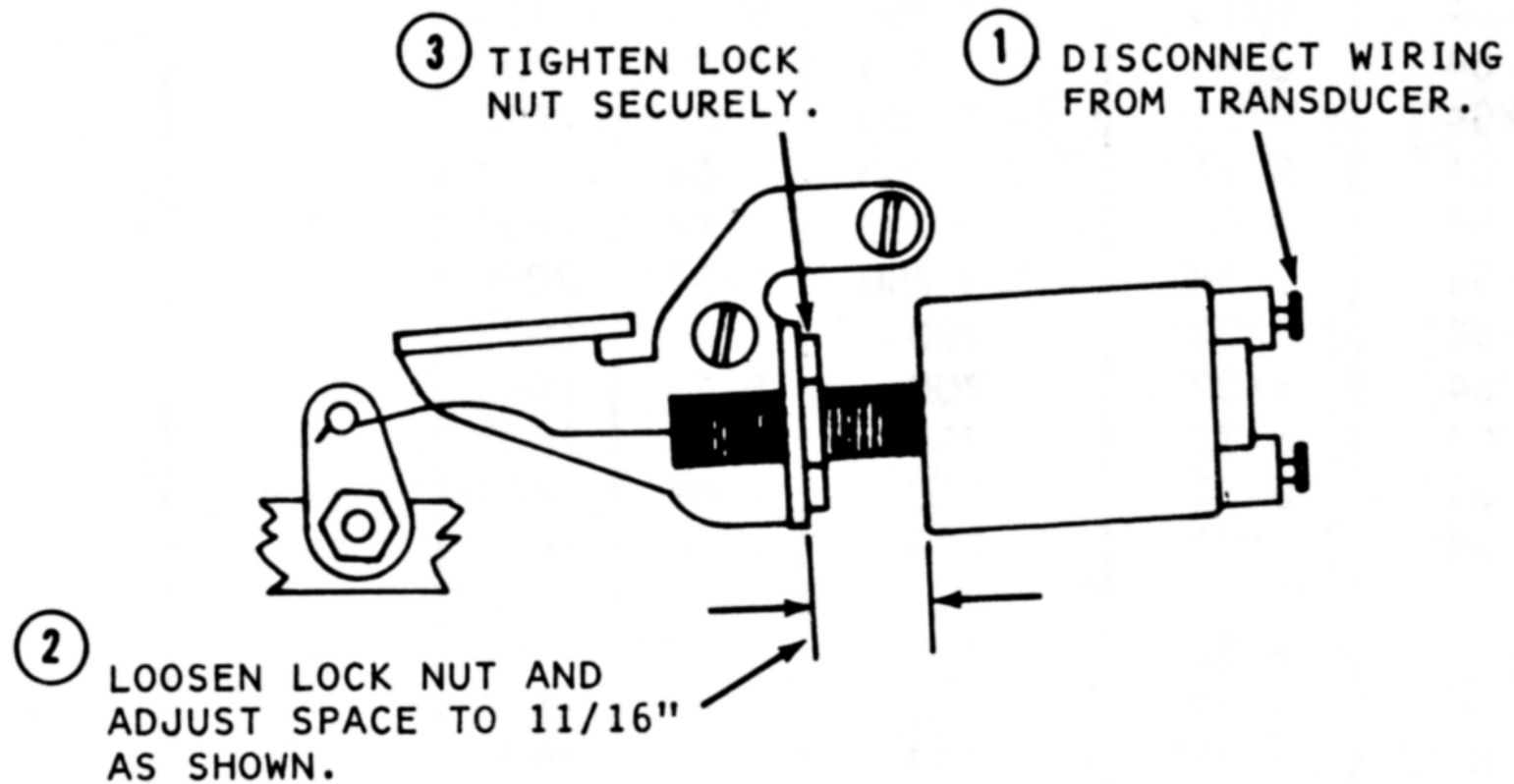
PUMP LINK (8) - INSTALL IN PROPER SLOT OF PUMP LEVER (7), CHECK FIG. 3

IDLE LIMITER CAPS (11) - IF CAPS WERE REMOVED FOLLOW CAR MANUFACTURERS PROCEDURE TO ADJUST IDLE AND INSTALL NEW CAPS.

ADJUSTMENTS



ADJUSTMENTS



THROTTLE POSITION
TRANSDUCER ADJUSTMENT

ADJUSTMENT DATA TABLE

YEAR	APPLICATION	FLOAT LEVEL (DRY)	PUMP ADJUSTMENT		UNLOADER	VACUUM KICK	SLOW IDLE R.P.M. NOTE-1	BOWL VENT	FAST IDLE R.P.M.	DASHPOT SETTING ON CAR
			SLOT	SETTING						
1970	CHRYSLER PRODUCTS									
	360" ENG.	3/16"	3	9/16" (3)	11/64"	9/64"	A/T 650	5/64"	1700	----
1971	400" ENG.	3/16"	1	19/32" (3)	11/64"	9/64"	S/T 750	5/64"	1700	----
	360" ENG.	3/16"	3	9/16" (3)	11/64"	9/64"	A/T 700	1/64"	1800	----
1972	400" ENG.	3/16"	1	19/32" (3)	11/64"	9/64"	S/T 750	1/64"	1800	----
	360" ENG.	3/16"	3	9/16" (3)	11/64"	9/64"	A/T 700	1/64"	1900	----
1973	400" ENG.	3/16"	1	19/32" (3)	11/64"	7/64"	S/T 750	1/64"	2000	Calif.
	360" ENG.	3/16"	3	1/4" (3A)	11/64"	5/32"	750	1/64"	1900	----
1974	400" ENG.	3/16"	3	1/4" (3A)	11/64"	5/32"	700	1/64"	1800	----
	360" ENG.	3/16"	1	1/4" (3A)	11/64"	5/32"	750	1/64"	1800	----
1975	400" ENG.	3/16"	1	1/4" (3A)	11/64"	5/32"	700	1/64"	1600	----
	360" ENG.	3/16"	1	1/4" (3A)	11/64"	5/32"	750	1/64"	1800	----
1975-76	400" ENG. TRUCK	3/16"	1	5/16" (3A)	11/64"	5/32"	700	----	1600	----
	360" ENG. TRUCK	3/16"	1	5/16" (3A)	11/64"	5/32"	700	----	1600	----
1976	400" ENG.	3/16"	1	5/16" (3A)	11/64"	5/32"	700	.025	1600	----
	360" ENG.	3/16"	1	5/16" (3A)	11/64"	5/32"	700	.025	1600	----
1977	400" ENG.	3/16"	1	5/16" (3A)	11/64"	5/32"	700	.025	1700	----
	360" ENG. TRUCK M/T	3/16"	2	21/64" (3A)	11/64"	5/32"	750	----	1700	----
1978-80	400" ENG. TRUCK A/T	3/16"	1	5/16" (3A)	11/64"	5/32"	750	----	1600	----
	360" ENG. TRUCK A/T	3/16"	1	5/16" (3A)	11/64"	5/32"	700	----	1400	----
1978	400" ENG.	3/16"	1	17/64" (3A)	11/64"	7/64"	750	.025	1600	----
	360" ENG. TRUCK All/T	3/16"	2	5/16" (3A)	11/64"	7/32"	750	----	1600	----
1978	400" ENG. Carb. No. R8135A	3/16"	1	5/16" (3A)	11/64"	5/32"	750	----	1800	----
	360" ENG. Carb. No. R7871A	3/16"	2	5/16" (3A)	11/64"	1/8"	750	----	1600	----
1978-79	400" ENG. TRUCK All/T	3/16"	1	5/16" (3A)	11/64"	5/32"	700	----	1600	----
	360" ENG. TRUCK	3/16"	1	19/64" (3A)	11/64"	7/64"	750	.025	1600	----
1982-83	400" ENG. TRUCK	3/16"	1	19/64" (3A)	11/64"	7/64"	750	.025	1600	----
	360" ENG. CARB. NO. R9816A	3/16"	1	17/64" (3A)	11/64"	5/32"	750	----	1700	----
1973	I.H.C. PRODUCTS									
	Carb. No. R6776A Calif.	3/16"	1	45/64" (3)	7/32"	9/64"	745/760	.020	2200	5/64"
1973-74	Carb. No. R6674A,1A,2A	3/16"	1	45/64" (3)	7/32"	11/64"	745	.020	2200	5/64"
	400" ENG.	3/16"	1	45/64" (3)	7/32"	9/64"	745/760	.020	2200	5/64"
1973-75	Carb. No. R6443A,1A	3/16"	2	45/64" (3)	7/32"	9/64"	745/760	.020	2200	5/64"
	304"/345" ENG.	3/16"	2	45/64" (3)	7/32"	9/64"	745/760	.020	2200	5/64"
1973-76	Carb. No. R6620A,1A,2A	3/16"	1	45/64" (3)	7/32"	7/64"	740	----	2200	---
	304"/345" ENG.	3/16"	1	45/64" (3)	7/32"	9/64"	575	.020	2200	----
1974	Carb. No. R6828A	3/16"	1	45/64" (3)	7/32"	9/64"	575	.020	2200	----
	304"/345" ENG.	3/16"	1	45/64" (3)	7/32"	11/64"	E/D	----	E/D	----
1974	Carb. No. R7037A	3/16"	1	45/64" (3)	7/32"	11/64"	E/D	----	E/D	----
	400" H/D ENG.	3/16"	1	45/64" (3)	7/32"	9/64"	E/D	----	E/D	----
1974-75	Carb. No. R7309A	3/16"	1	45/64" (3)	7/32"	9/64"	E/D	----	E/D	----
	304"/345" ENG.	3/16"	1	45/64" (3)	7/32"	9/64"	E/D	----	E/D	----
1975-76	Carb. No. R7133A	3/16"	1	45/64" (3)	7/32"	5/32"	E/D	----	2000	----
	345" ENG. Calif.	3/16"	1	45/64" (3)	7/32"	9/64"	E/D	----	E/D	----
1975-76	Carb. No. R7214A, R7217A	3/16"	1	45/64" (3)	7/32"	9/64"	E/D	----	E/D	----
	MV 404" ENG.	3/16"	1	45/64" (3)	7/32"	9/64"	E/D	----	E/D	----
1977-79	Carb. No. R7940A, R8241A	3/16"	2	----	7/32"	1/16"	E/D	----	E/D	----
	345" ENG.	3/16"	2	----	7/32"	9/64"	E/D	----	E/D	----
1977	Carb. No. R7657A	3/16"	2	----	7/32"	9/64"	E/D	----	E/D	----
	404" ENG.	3/16"	1	----	7/32"	9/64"	E/D	----	E/D	----
1978	Carb. No. R8244A	3/16"	1	----	7/32"	9/64"	E/D	----	E/D	----
	404" ENG.	3/16"	2	45/64" (3)	7/32"	1/8"	E/D	----	E/D	----
1979	Carb. No. R7773A	3/16"	2	45/64" (3)	7/32"	1/8"	E/D	----	E/D	----
	304" ENG.	13/64"	2	45/64" (3)	7/32"	1/8"	E/D	----	E/D	----
1980	Carb. No. R8790A	13/64"	2	45/64" (3)	7/32"	1/8"	E/D	----	E/D	----
	304" ENG.									

E/D=ENGINE DECAL

NOTE-1-CHECK ENGINE DECAL FOR SPECIAL IDLE INFORMATION.

REV. 3--83.

**ADJUSTMENT DATA TABLE
HOLLEY REPLACEMENT CARBS**

YEAR	ENGINE	CARB. NO.	FLOAT LEVEL DRY	PUMP SLOT	UNLOADER	VACUUM KICK	BOWL VENT
BUICK	1971-72	R-7668	3/16"	NO. 2	11/64"	5/64"	---
	1973-74	R-7669	3/16"	NO. 1	11/64"	5/64"	---
CHEVROLET	1969-70	R-7664	3/16"	NO. 2	11/64"	3/32"	---
	1971-72	R-7665	3/16"	NO. 2	11/64"	3/32"	---
	1973-74	R-7666	3/16"	NO. 1	11/64"	3/32"	---
CHEVROLET TRUCK	1974	R-7666 R-8702	3/16"	NO. 1	11/64"	3/32"	---
CHRYSLER PROD. DODGE/PLYMOUTH	1963-74	R-7641	3/16"	NO. 2	11/64"	7/64"	.025"
		R-7642	3/16"	NO. 2	11/64"	7/64"	.025"
		R-7643	3/16"	NO. 2	11/64"	13/64"	.025"
		R-7644	3/16"	NO. 2	11/64"	13/64"	.025"
		R-7686	3/16"	NO. 2	11/64"	7/32"	.025"
GMC TRUCK	1974	R-8702					
PONTIAC	1968-72	R-7667	3/16"	NO. 2	11/64"	1/16"	---