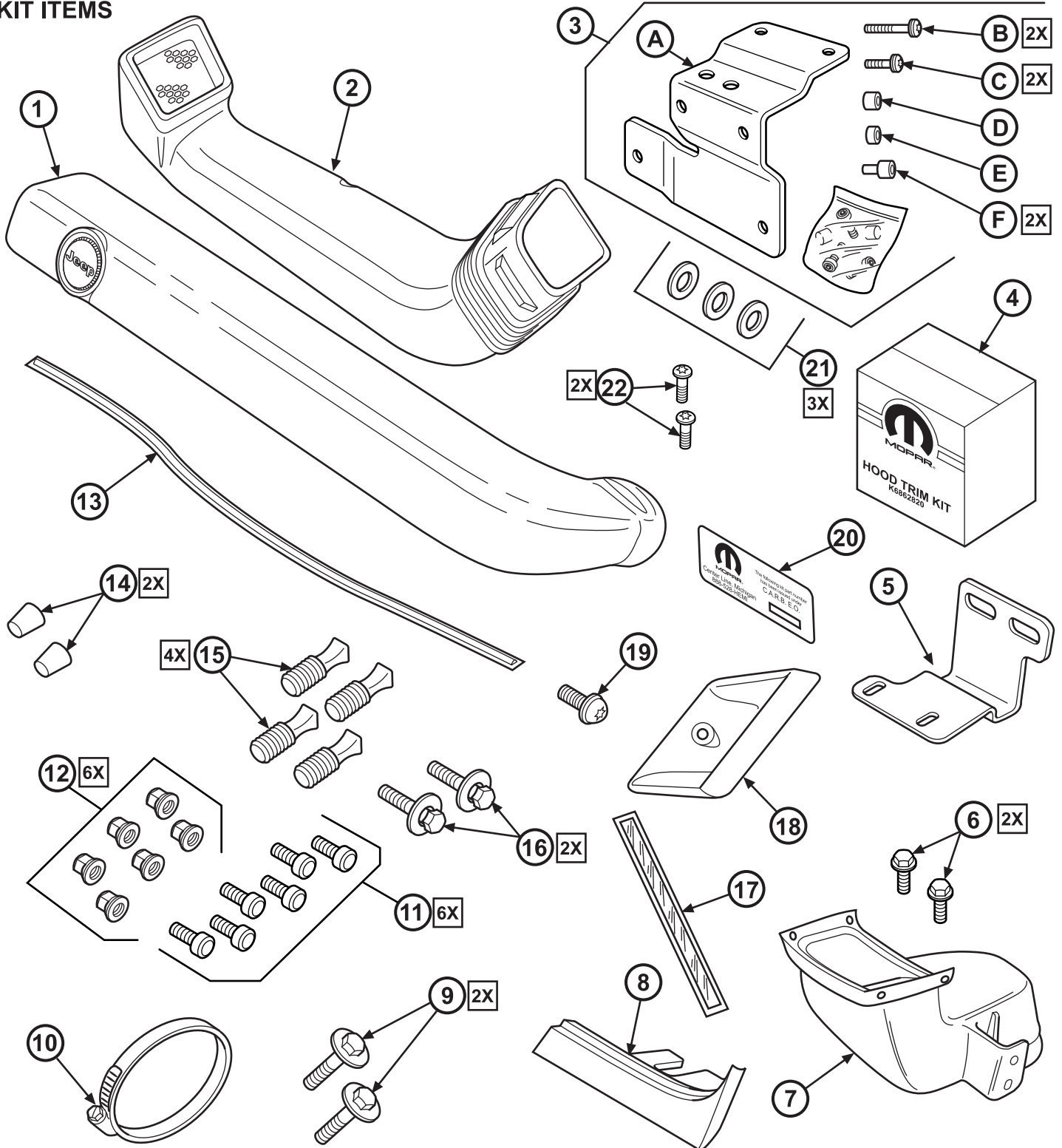
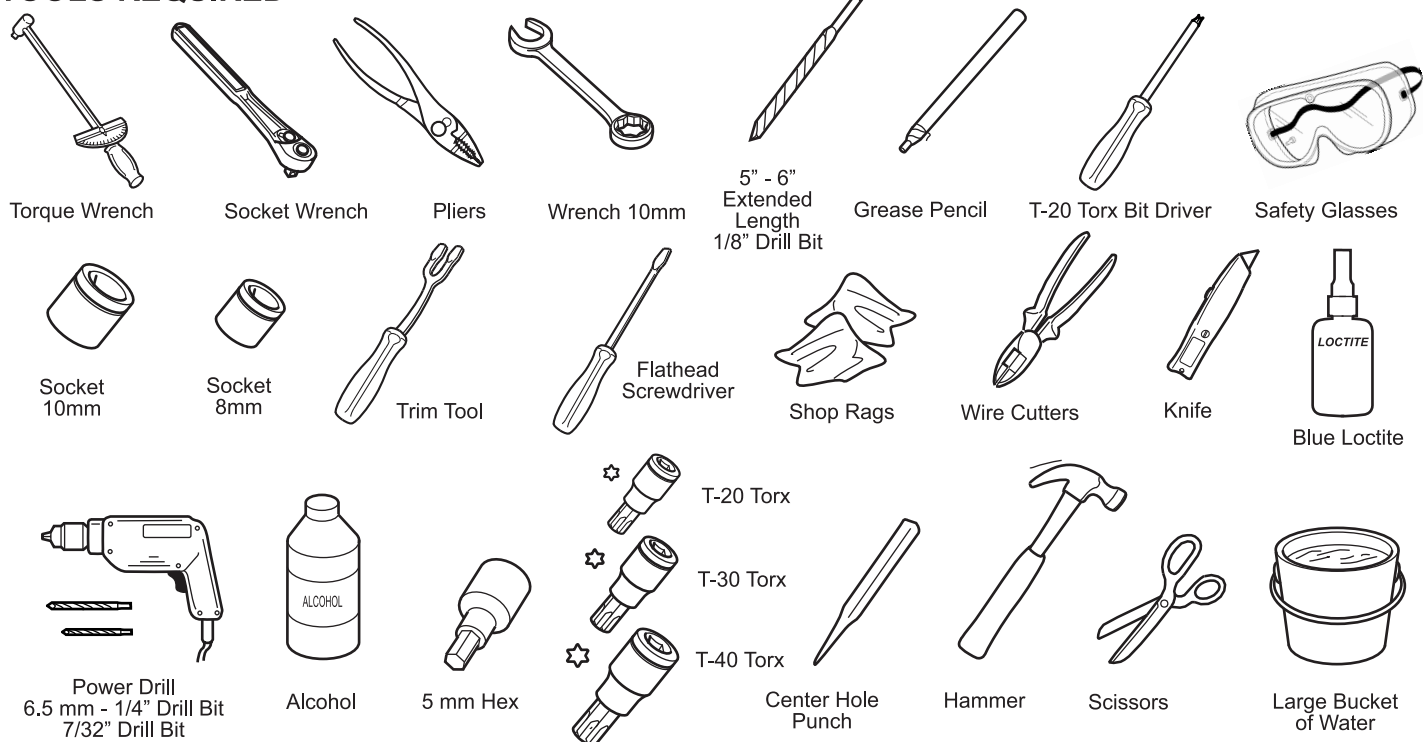




JEEP SNORKEL KIT (2018 & UP)

KIT ITEMS



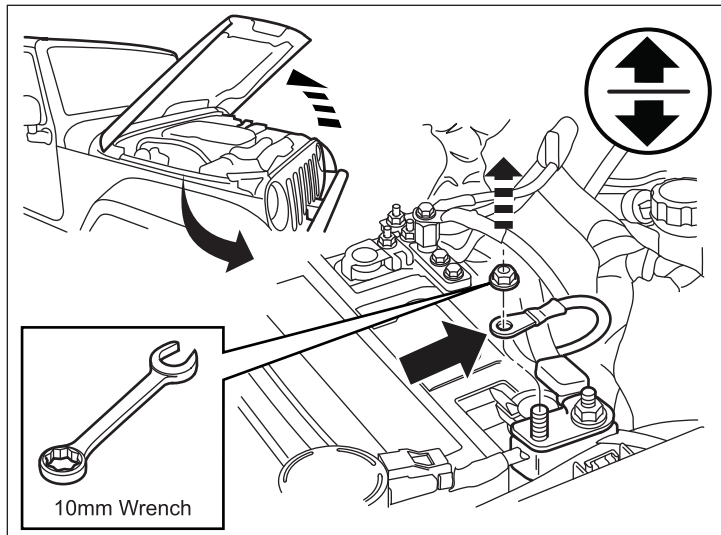
TOOLS REQUIRED**PARTS LIST**

| Callout | Description | Parts | Quantity |
|---------|---|-----------------|----------|
| 1 | Lower Snorkel | Supplied in kit | 1 |
| 2 | Upper Snorkel w/Reveal, Upper Bezel & Tether | Supplied in kit | 1 |
| 3 | Right Hand A-Pillar Mounting Brt & Hardware Bag | Supplied in kit | 1 |
| 4 | Hood Trim Kit | Supplied in kit | 1 |
| 5 | Lower Mounting Bracket | Supplied in kit | 1 |
| 6 | M8 - 1.25 x 16 Hex Flange Head | Supplied in kit | 2 |
| 7 | Z-Tube Assembly | Supplied in kit | 1 |
| 8 | Lower Close Out Bezel | Supplied in kit | 1 |
| 9 | M8 - 1.25 x 16 Hex Head & Washer | Supplied in kit | 2 |
| 10 | Hose Clamp | Supplied in kit | 1 |
| 11 | Socket Head Screws | Supplied in kit | 6 |
| 12 | Mopar Cap Nuts | Supplied in kit | 6 |
| 13 | 18" Butyl - Seal Material | Supplied in kit | 18" |
| 14 | Rubber Tapered Round Plugs | Supplied in kit | 2 |
| 15 | Masking Flangeless Plugs | Supplied in kit | 4 |
| 16 | M6 - Hex Head & Washer (Silver Finish) | Supplied in kit | 2 |
| 17 | Foam Seal 241MM | Supplied in kit | 1 |
| 18 | Upper Snorkel Bracket | Supplied in kit | 1 |
| 19 | M8-1.25 Torx Head & Conical Washer | Supplied in kit | 1 |
| 20 | E.O. Label | Supplied in kit | 1 |
| 21 | M8 Oversize Washer 24mm OD | Supplied in kit | 3 |
| 22 | #8 x 1.0 Sheet Metal Screws (Torx Drive) | Supplied in kit | 2 |

PROCEDURAL STEPS

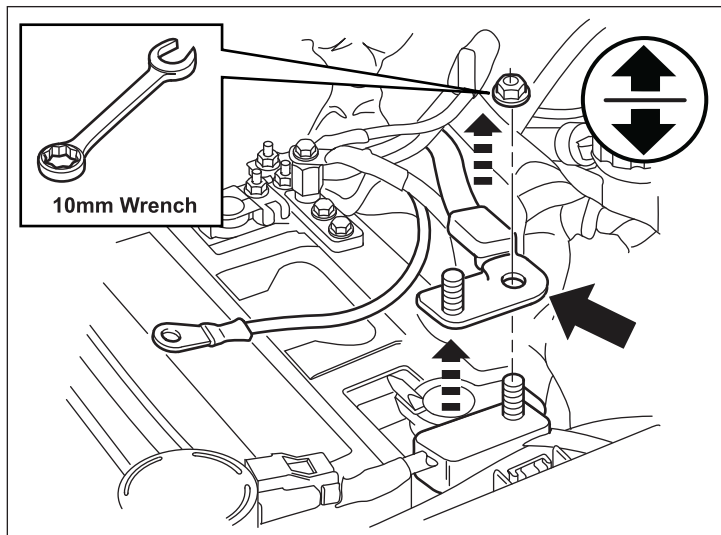
1. Open hood and remove the nut for the supplemental battery cable with a 10mm wrench. Isolate away from the negative "-" battery post.

Save hardware for reinstallation.

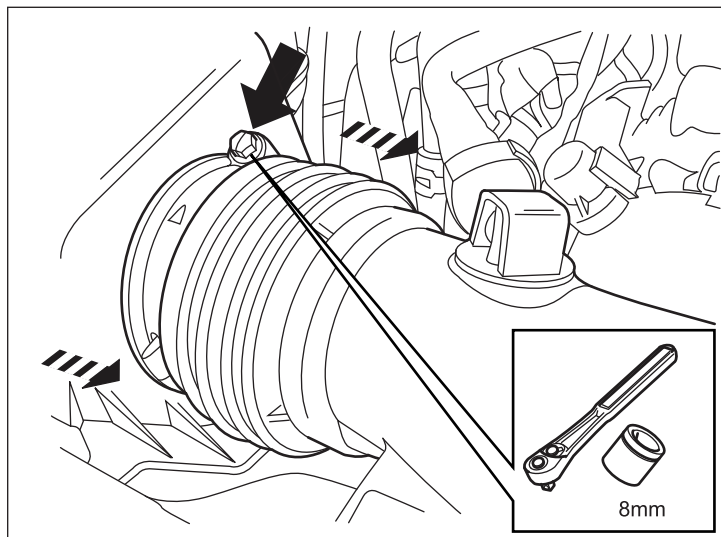


2. Remove the second nut from the main "-" negative cable with a 10mm wrench. Isolate away from the negative "-" battery post.

Save hardware for reinstallation.

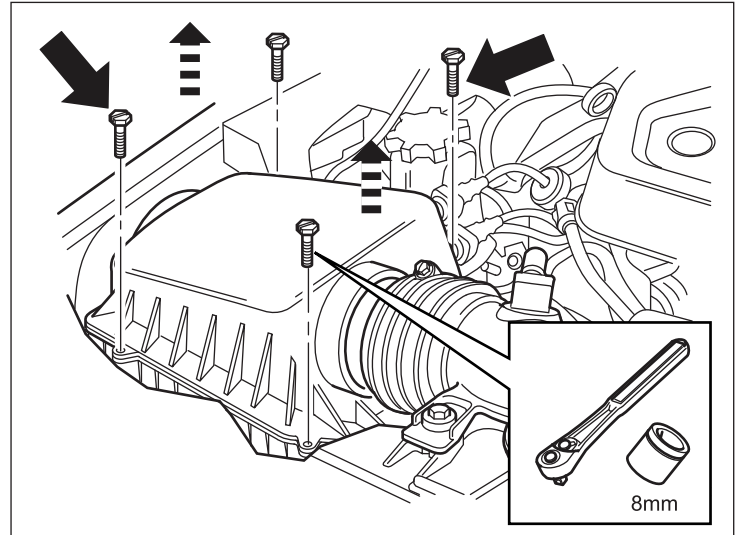


3. Loosen hose clamp at air cleaner lid and slide cold air tube off. Do not remove hose clamp.

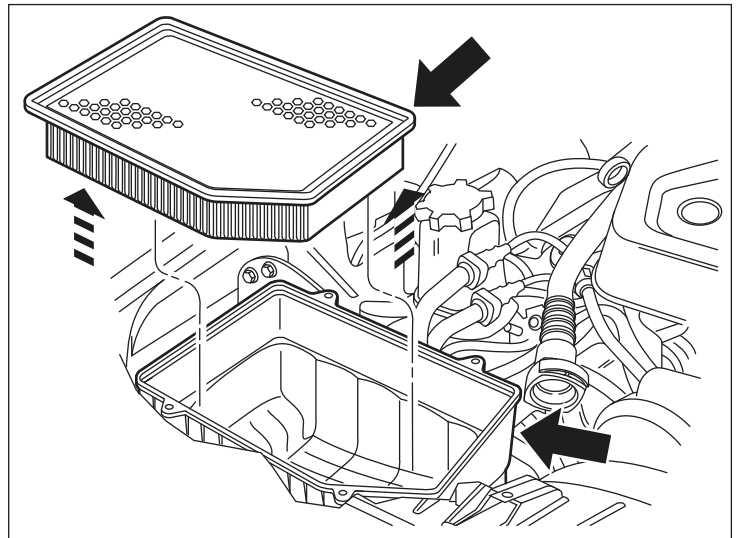


4. Remove the four M5 air cleaner cover screws with a 8mm socket. Save the screws for reinstallation.

Remove entire air cleaner lid.

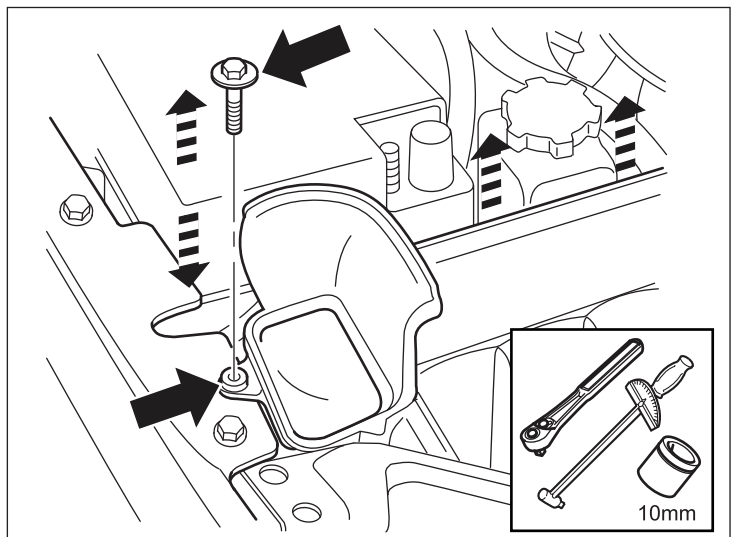


5. Remove air filter.

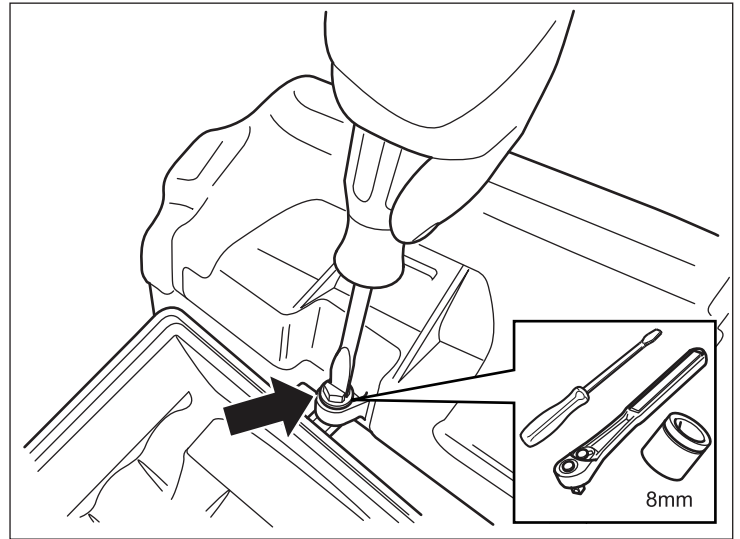


6. Remove the air box bolt with a 10mm socket and remove air box housing.

Reinstall bolt with a 10mm socket and torque to 9 N.m.

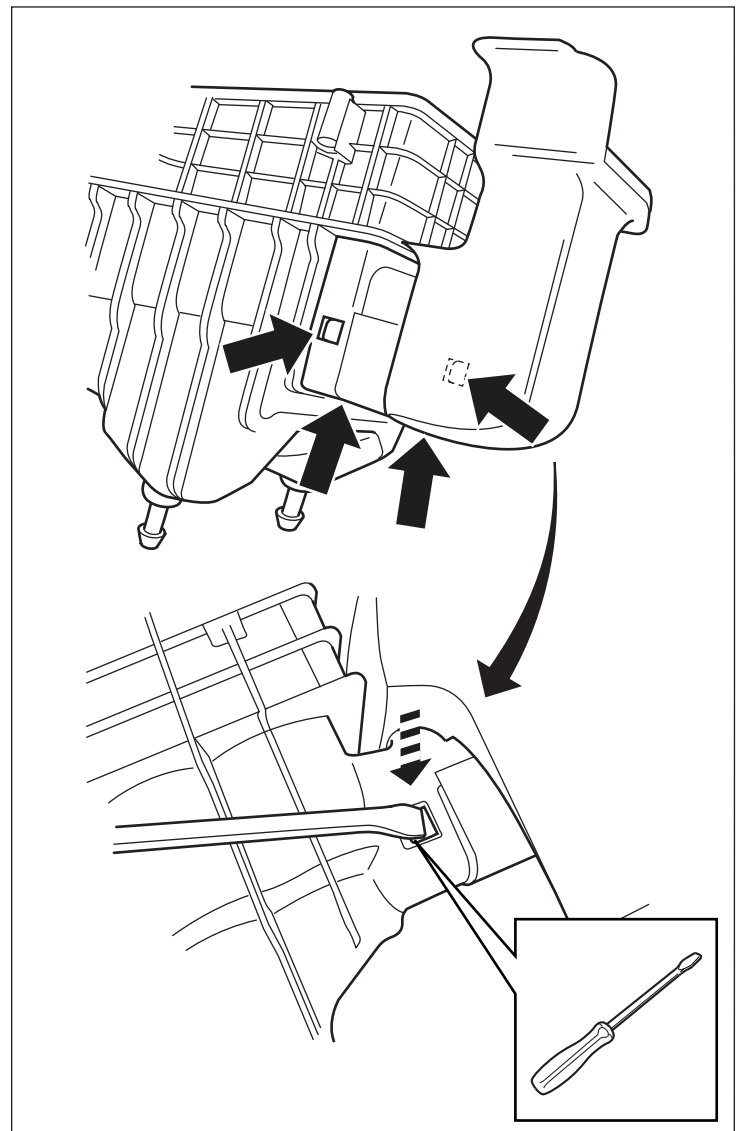


- 7. Remove air inlet screw with a flat head screwdriver or 8mm socket and save screw for reinstallation.

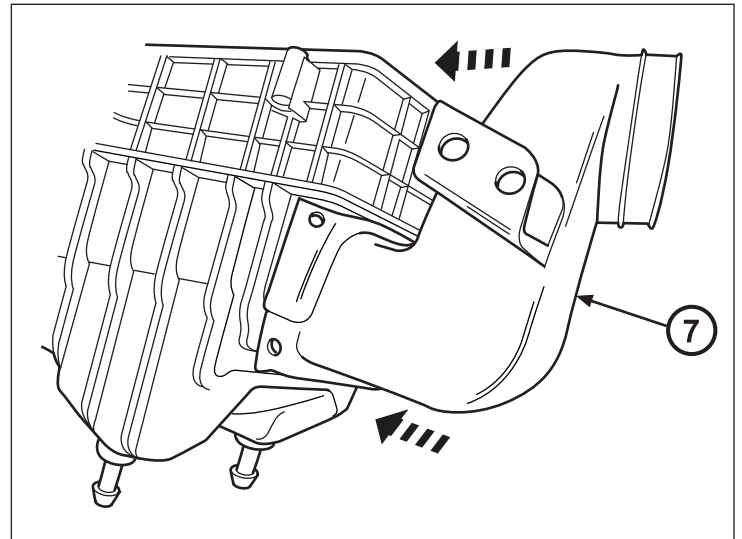


- 8. Use a flat head screwdriver and press down on all 4 locking tabs around the air inlet housing to remove.

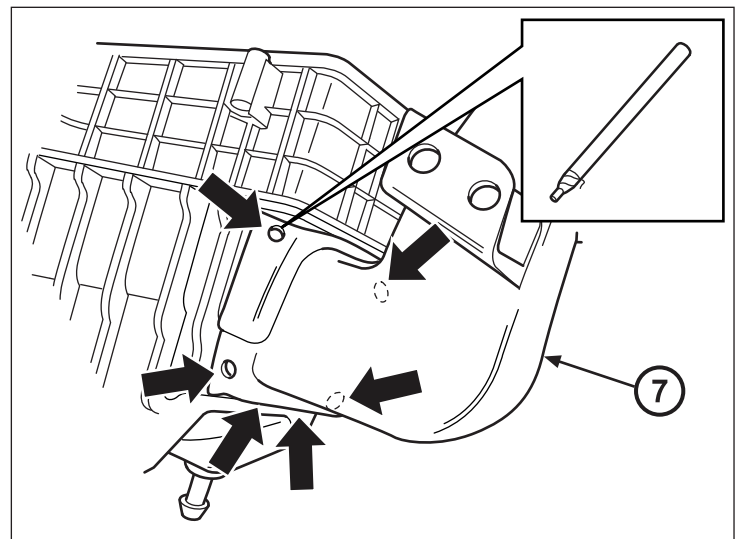
Discard air inlet housing.



9. Align and "Hold" the Z-Tube (7) onto the air box housing.

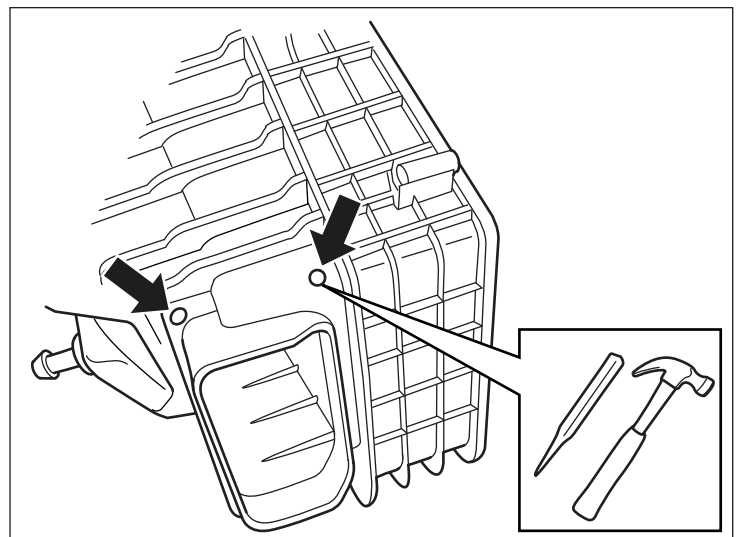


10. Mark the six mounting holes with a grease pencil for drilling and remove Z-Tube (7).

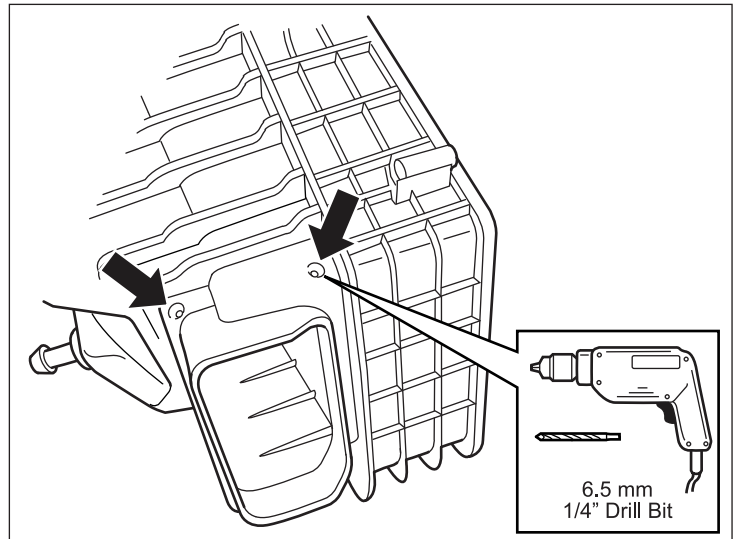


CAUTION: Only use center hole punch to "start" holes to be drilled. Care should be taken not to damage air box housing.

11. Punch each marked hole in air box housing with a center hole punch and hammer.

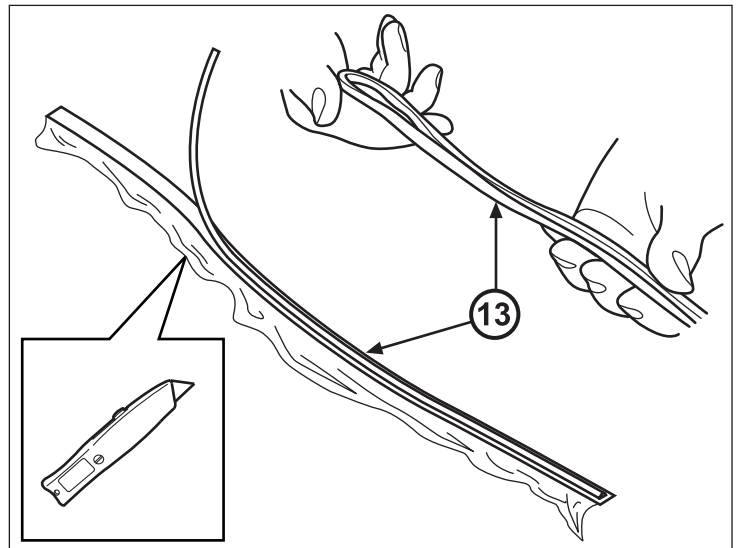


12. Drill all six holes in the air box housing with a 6.5mm (1/4" inch) drill.



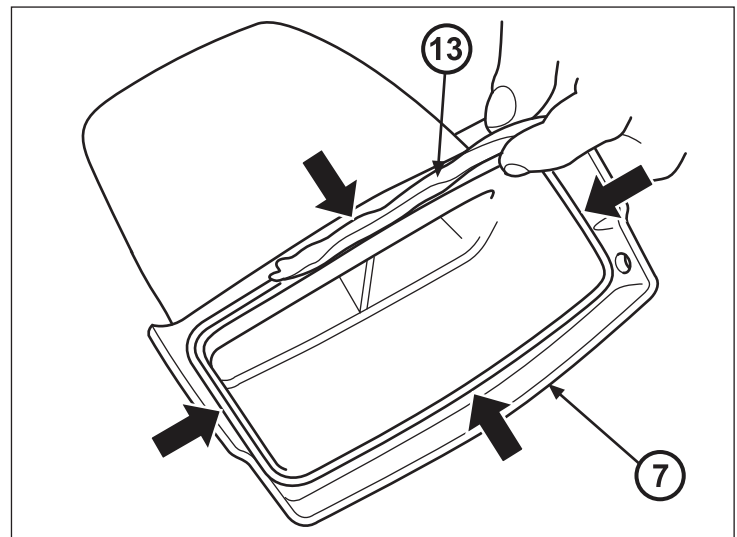
13. Cut open the 18" Butyl seal (13) with a knife and roll together to form a "bead" like seal.

NOTE: This will be used to fit into the Z-Tube groove and air box housing.

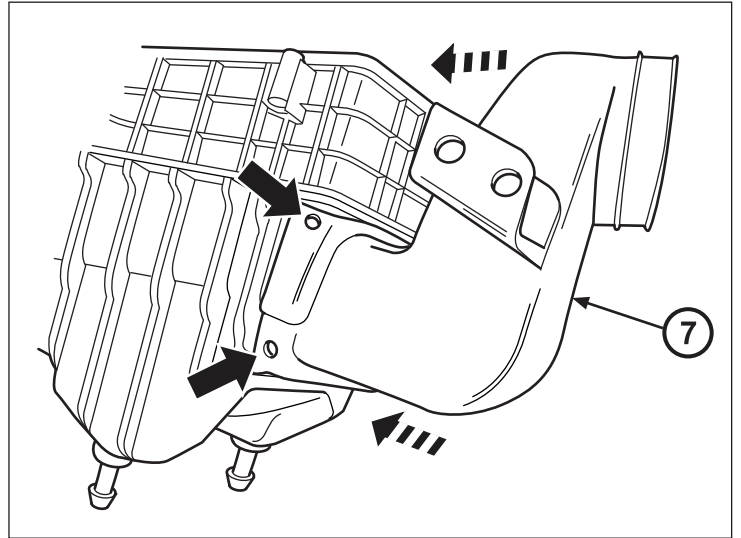


14. Lay Butyl seal (13) into groove of Z-Tube (7).

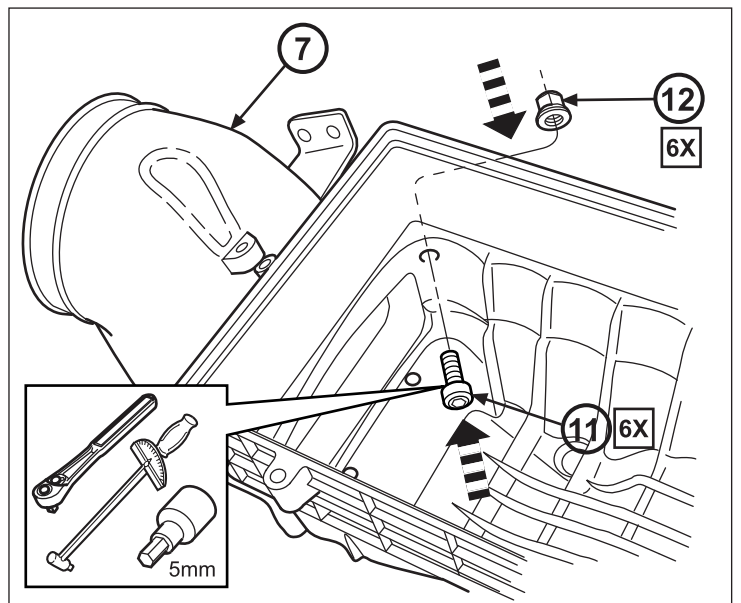
NOTE: Knead Butyl seal well into groove all around four sides of Z-Tube to eliminate any air bubbles between seal and Z-Tube.



15. Press Z-Tube (7) onto air box housing, firmly in place and align with the six drilled holes.

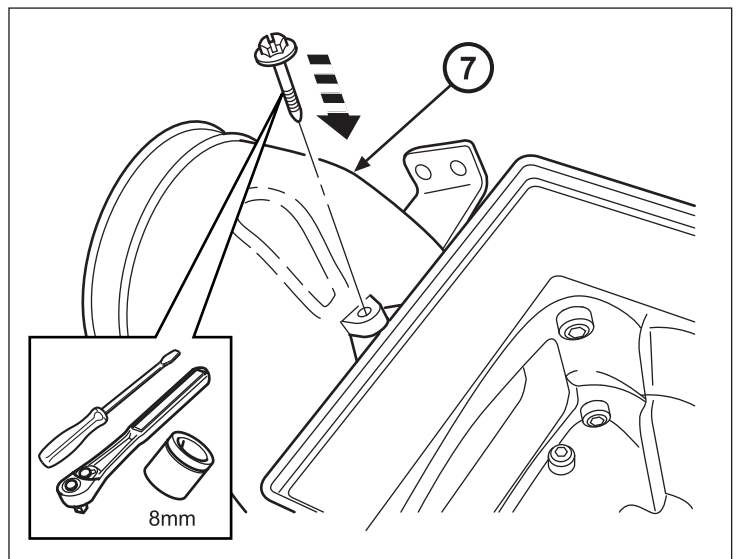


16. Fasten six M6 bolts (11) through drilled holes in air box housing to Z-Tube (7) with six cap screws (12) using a 5mm hex socket and snug up.



17. Install self tapping screw, saved from "Step 7" in to Z-Tube (7) and air box housing.

Use a flat head screwdriver or an 8mm socket.



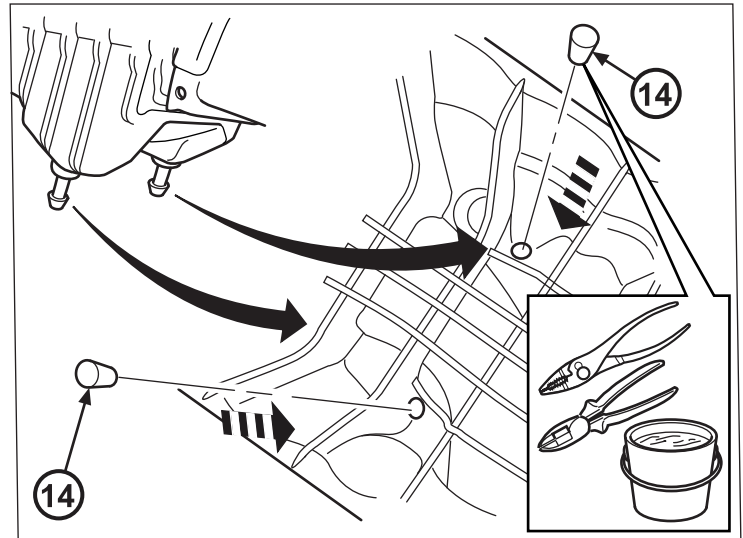
18. Plug the two deep well drain holes inside the air box housing with the rubber tapered round plugs (14).

Use soapy water and a pair of pliers and pull hard on each rubber plug (14) until each are fully seated in each deep well drain hole and, no daylight is visible.

Trim some of the excess off to ensure no interference with components below.

NOTE: It may be useful to also check the plugs by immersing the air box housing in a bucket of soapy water to check for any leaks.

These plugs are not to be removed.

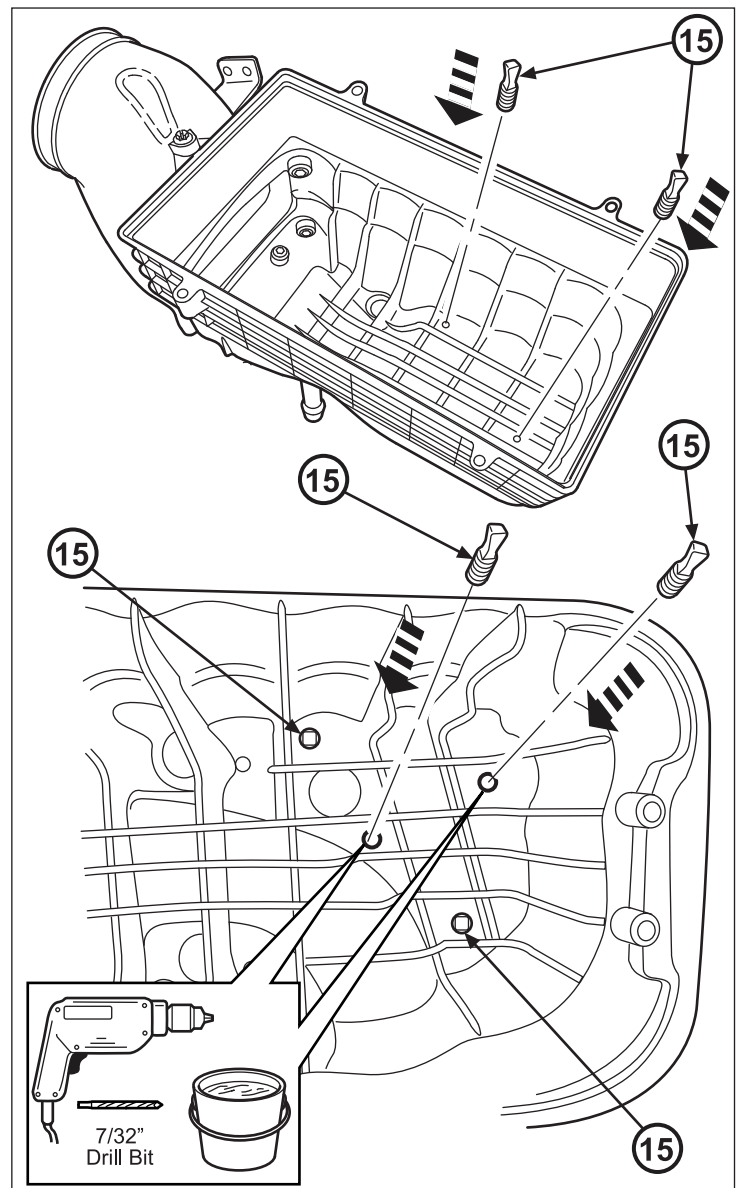


19. Install additional two masking flangeless plugs (15) in remaining air box housing drain holes.

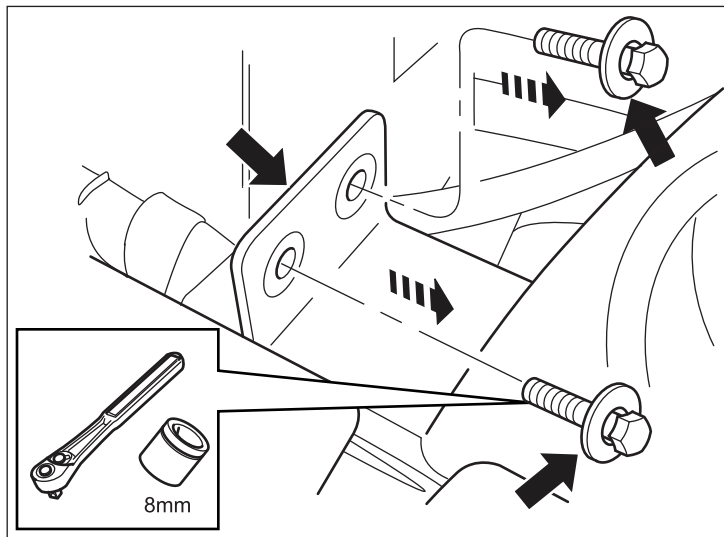
Drill two additional 7/32" inch holes, push remaining masking flangeless plugs (15), hard & twist while pushing until fully seated & no leaks.

NOTE: It may be useful to also check the plugs by immersing the air box housing in a bucket of soapy water for any leaks.

NOTE: These four plugs (15) are to be removed during "normal" highway driving.

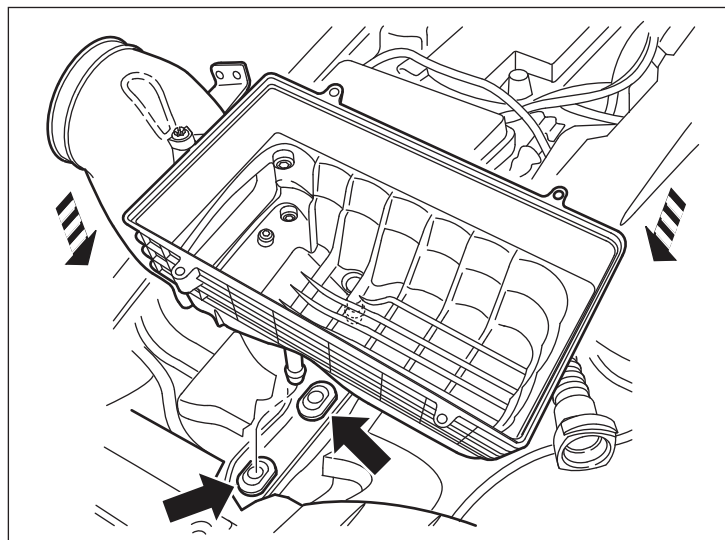


20. Remove two existing M6 bolts from existing bracket along side of Z-Duct with a 8mm socket, save bolts re installation.



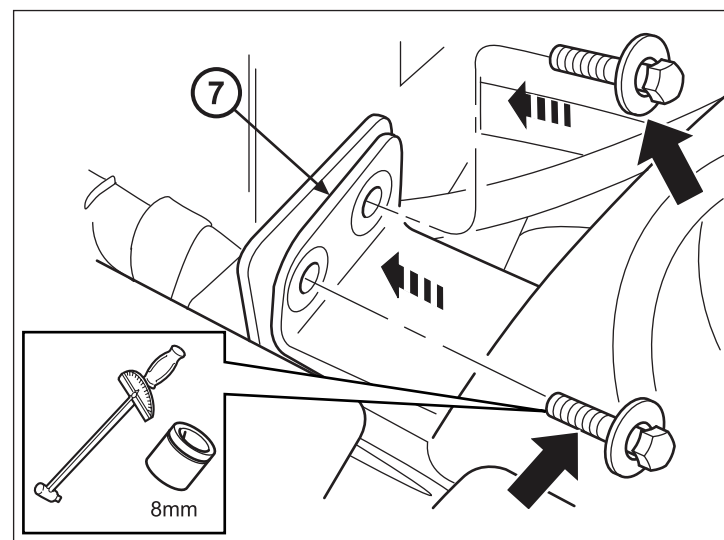
21. Install airbox housing back into engine compartment. Align posts tubes with grommets on frame rail.

Ensure airbox is seated tightly.

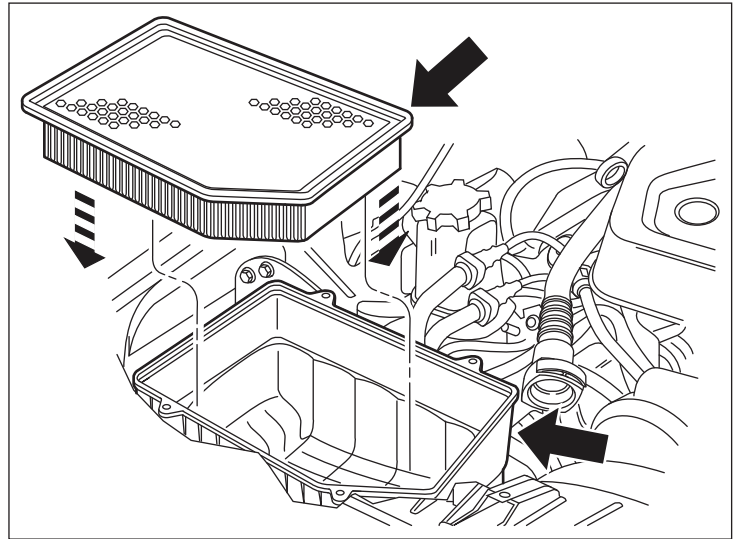


22. Install two M6 bolts (7) through Z-Tube (9) and fasten to air box mount with a 8mm socket.

Torque bolts to 5 N.m.



23. Install air filter in air box housing.

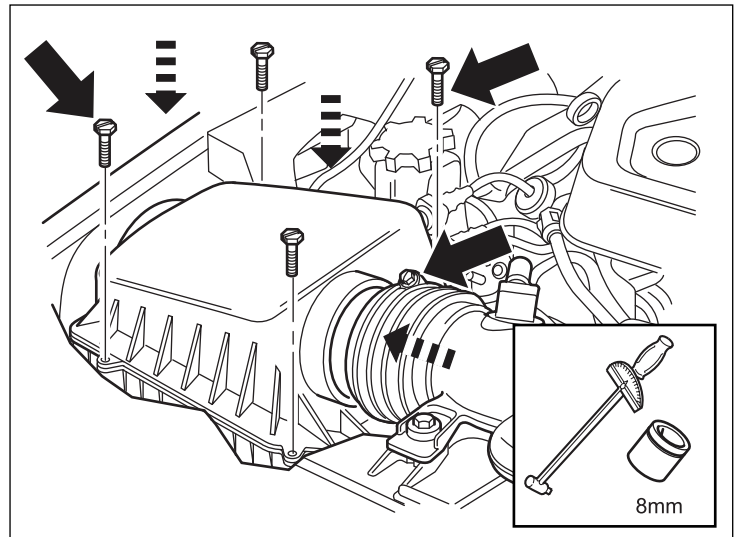


24. Install air cleaner lid onto air box housing, with the four M5 screws left from the removal.

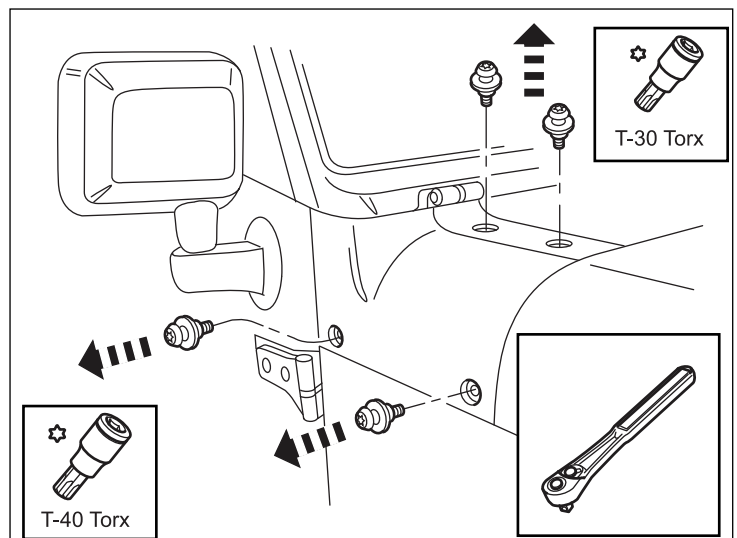
Use a 8mm socket and torque to 4.1 N.m. or (3ft-lbs.).

Slide cold air tube onto air box lid and tighten hose clamp at air box housing.

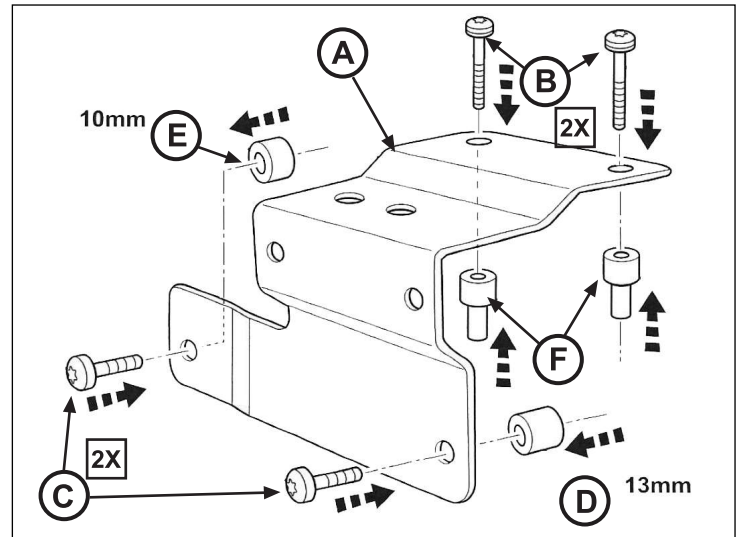
Use a 8mm socket and torque to 5 N.m. or (3.7ft-lbs.).



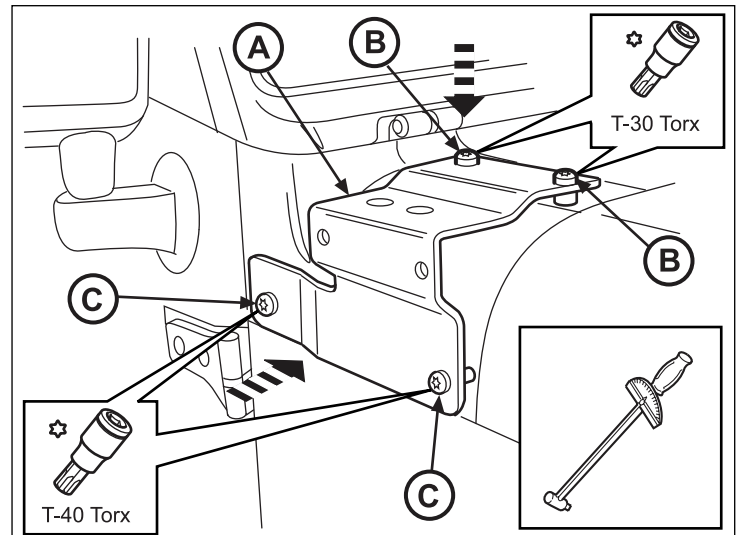
25. Remove two right side A-Pillar, side fender bolts with a socket wrench and T-40 Torx, discard bolts. Then remove two top A-Pillar fender bolts with a socket wrench and a T-30 Torx, discard bolts.



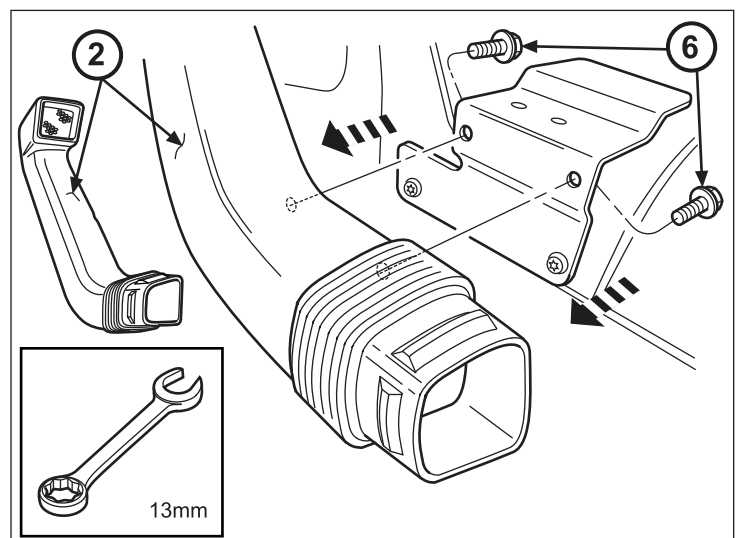
26. Assemble right front bracket kit (3) with attaching hardware in bag provided, as shown.



27. Attach right fender bracket (A) to right front fender, with mounting hardware assembled. Torque bolts (B) with a T-30 Torx to 8 N.m (6ft. lbs.). Then torque bolts (C) with a T-40 Torx to 8 N.m (6ft lbs.).



28. Install two M8 snorkel bolts (6) through A-pillar lamp bracket, with a 13mm wrench. Fasten to upper snorkel (2). Snug Bolts.



WARNING: Be sure to read the “Hood Cut Out” instructions completely before starting this step.

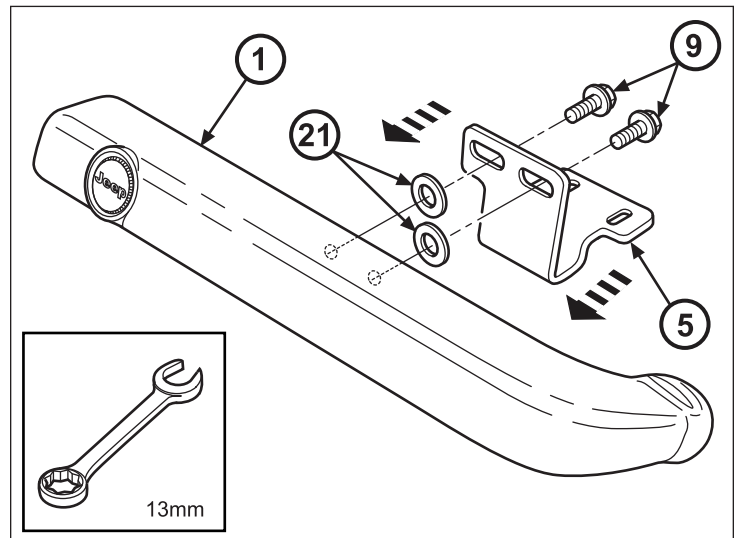
NOTE: Refer to Mopar Kit “K6862820” Hood Cut Out Bezel Procedure. (Included in this kit, item #4).

NOTE: Apply Blue Loctite sealant to threads of M8 lower snorkel mounting bolts (9) before installing.

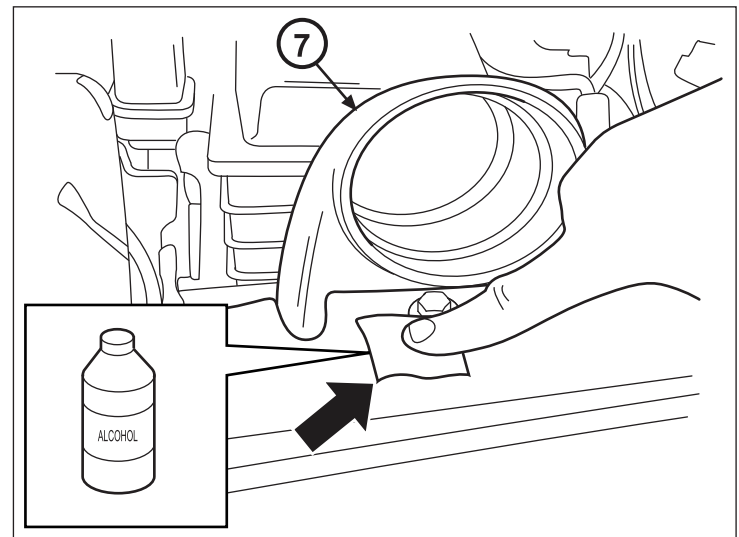
29. Install lower snorkel bracket (5) to lower snorkel (1) with two M8 snorkel bolts (9) and two washers (21). Fasten Loosely with a 13 mm wrench.

Final torques will be done once remainder of installation is completed.

Set the assembly to the side.



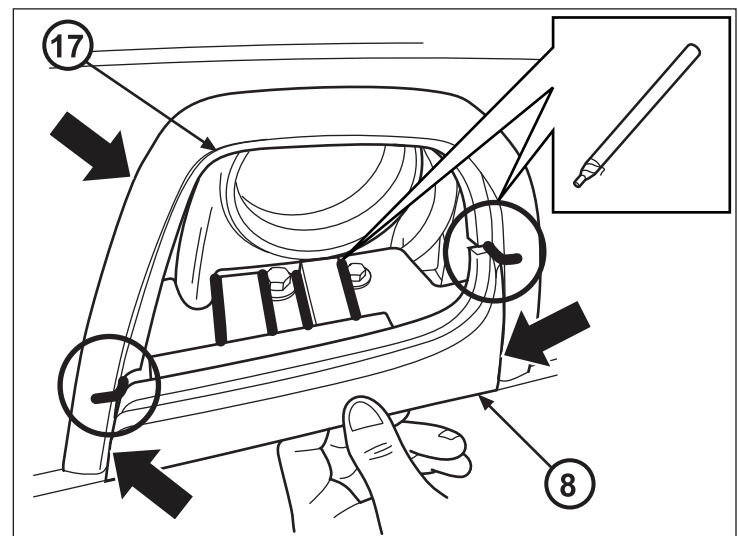
30. Clean fender area in front of Z-Tube (7) thoroughly with alcohol.



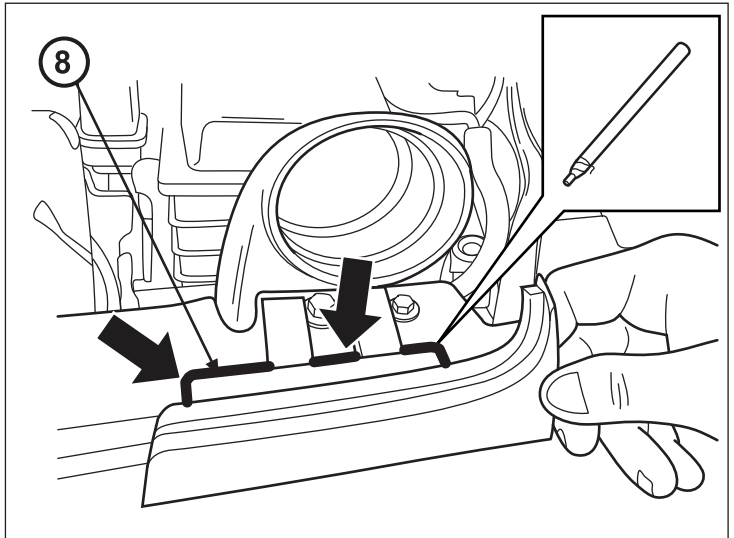
31. Close hood to align close out bezel (8) with hood cut out. Mark trim ring where lower close out seal ends.

With the bezel centered, mark the fender around the bezel extension tabs.

Open hood and install foam seal (17) on upper part of trim ring along back inboard edge.

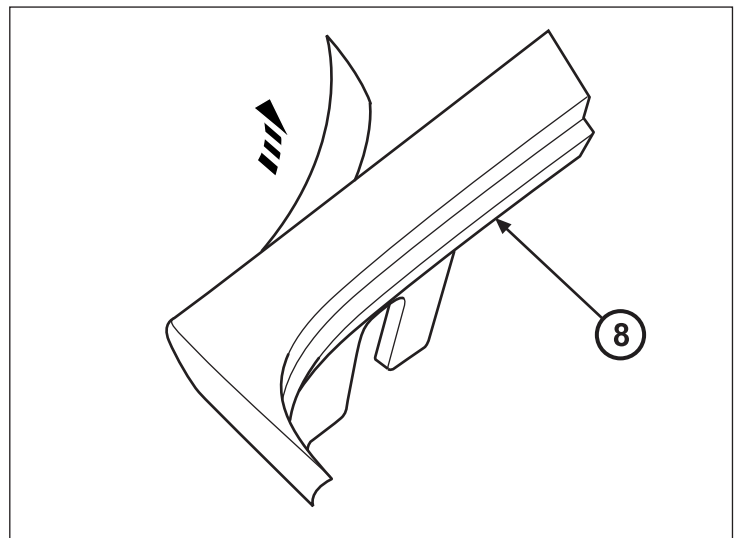


32. With the hood still open, mark around the remainder of the close out bezel (8) with a grease pencil on fender for accurate placement.



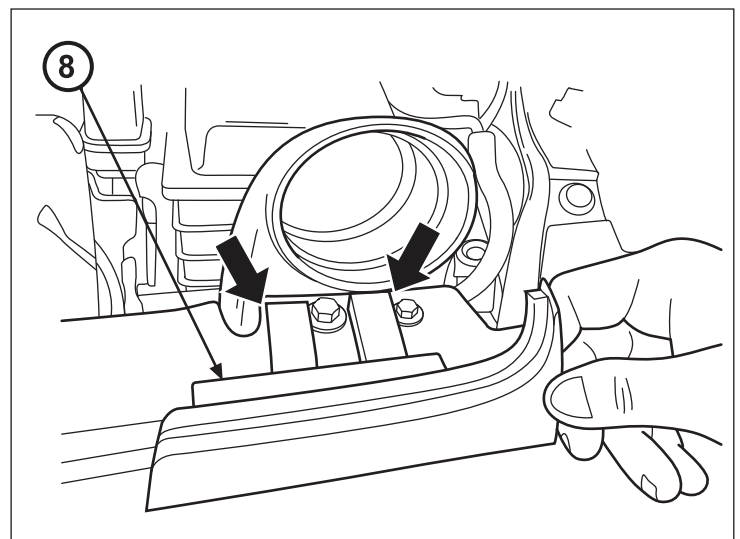
CAUTION: Once the red adhesive backing protection has been removed on the lower close out bezel (8) and placed on the fender location. The bezel cannot be repositioned.

33. Remove the red adhesive backing protection from the lower close out bezel (8).

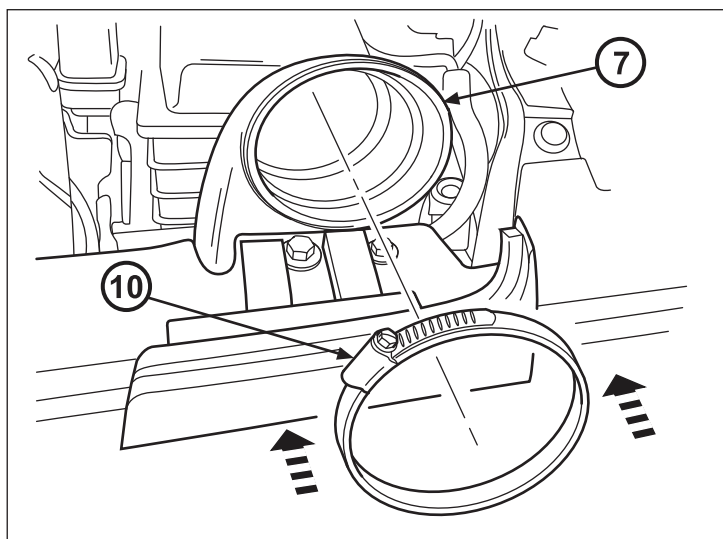


34. Place lower close out bezel (8) in place on the fender location marks made with the grease pencil.

Press down along lower close out bezel (8) to fender to mount securely.

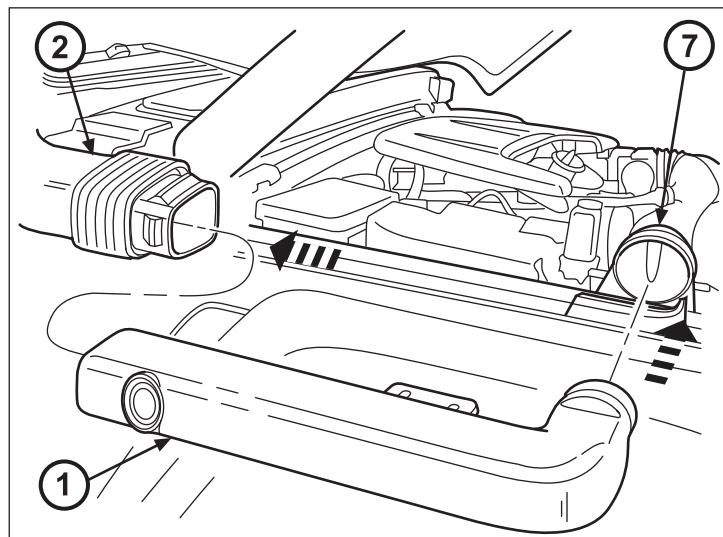


35. Slide band clamp (10) onto Z-Tube (7). Position clamp screw at a 45 degree angle as shown for final tightening. Do not tighten clamp.



NOTE: Lubricant is needed to assemble tubes. Use soapy water or rose water on the rubber sealing beads. Spray under the reveal. You can also spray the inside end of the lower snorkel (1).

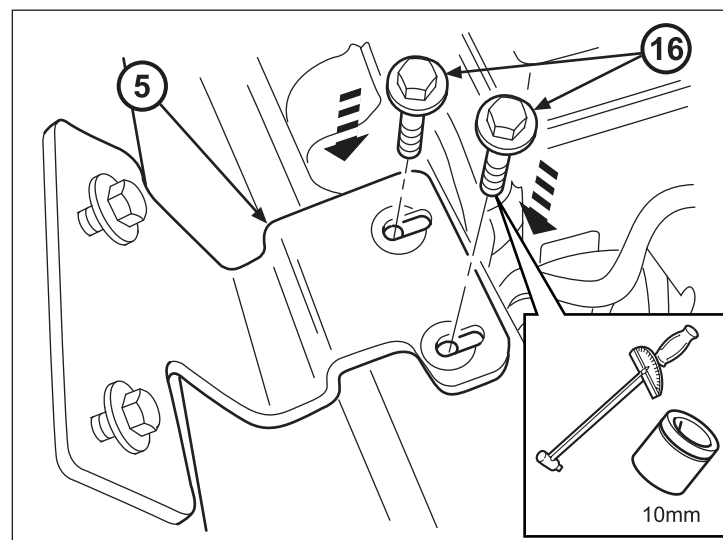
36. Install lower snorkel assembly (1) onto upper snorkel assembly (2) and the Z-Tube Assembly (7).



NOTE: One factory fender bolt to be removed.

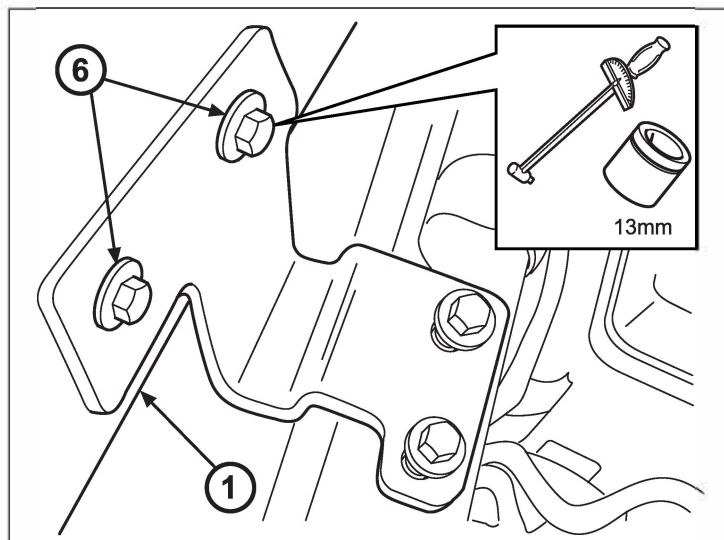
37. Attach two M6 bolts (16) into snorkel bracket (5) and fasten to fender with a 10 mm socket.

Fasten M6 bolts (16) loosely. Final torques will be done when final assembly is complete.



38. Finish torquing M8 upper snorkel bolts (6) to lower snorkel assembly (1) with a 13 mm socket.

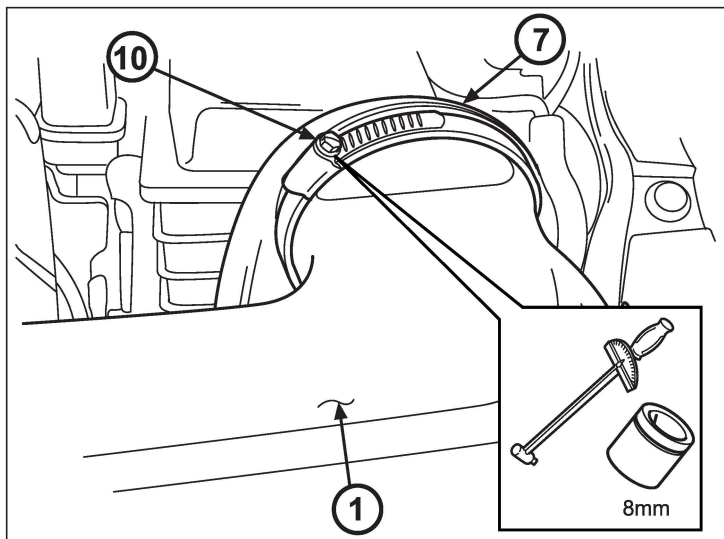
Torque bolts to 12 N.m.



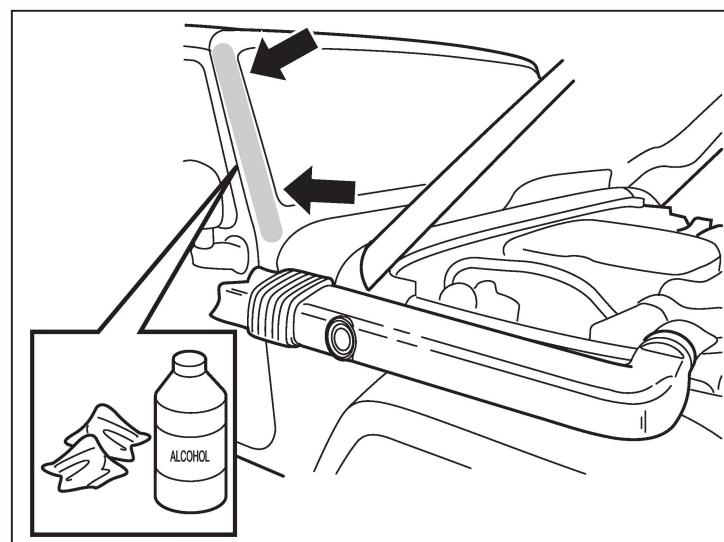
NOTE: Ensure lower snorkle (1), is installed flush into Z-Tube (7) before tightening/torquing clamp (10).

39. Tighten band clamp (10) to Z-Tube (7) and lower snorkel assembly (1) with a 8mm socket and torque wrench.

Torque band clamp (10) to 5 N.m.



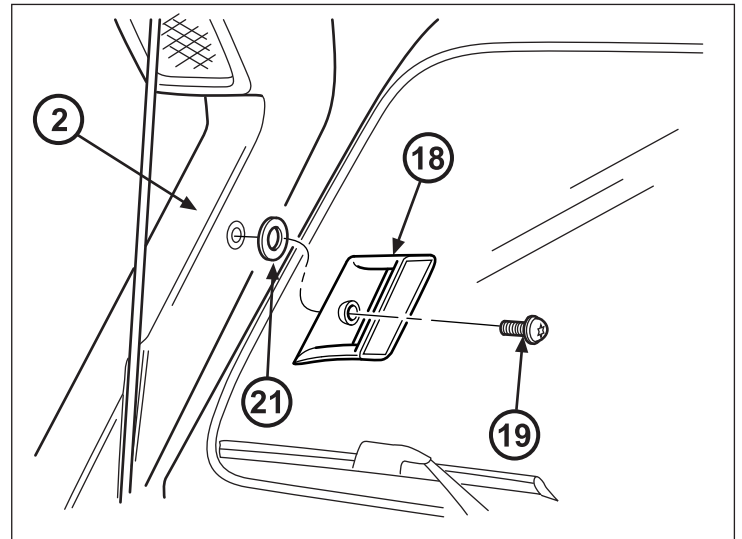
40. Clean passenger side A-Pillar thoroughly with wax remover/degreaser and alcohol.



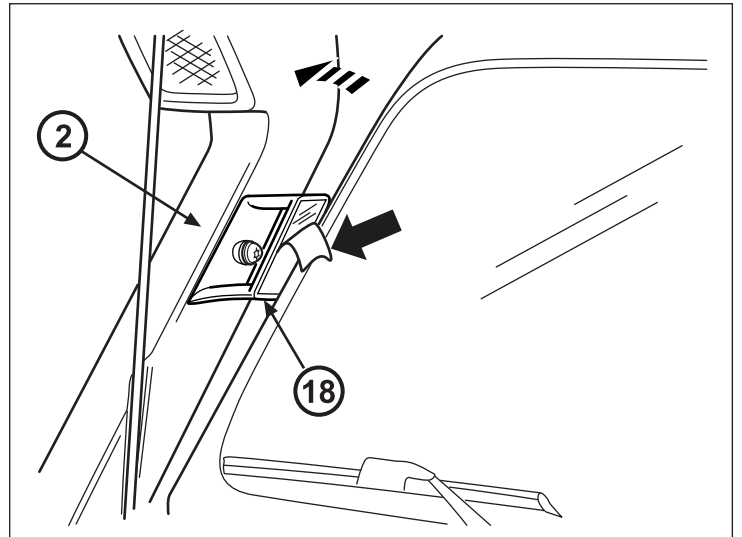
41. Attach upper snorkel bracket (18) onto snorkel (2) with bolt (19), and washer (21). Align the bracket (18) onto the A-pillar.

While holding the bracket (18) to the A-pillar, snug the bolt (19) to the snorkel (2).

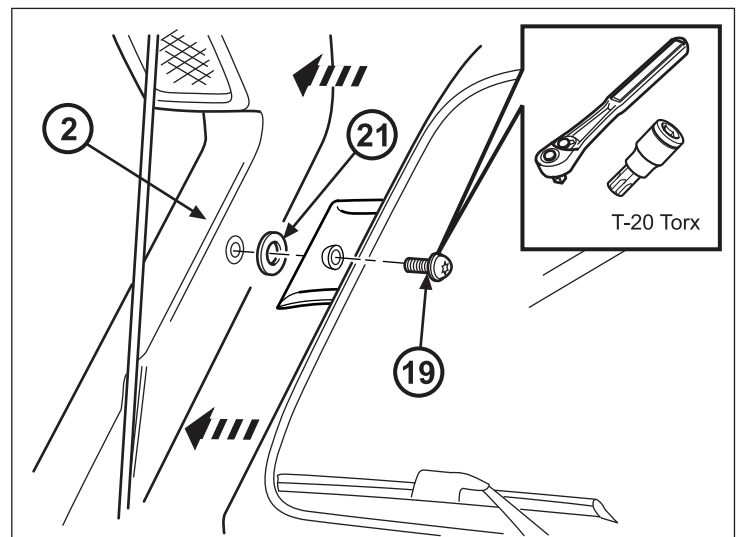
Final torque will be done once the remainder of the installation is completed.



42. Pull snorkel (2) back from A-pillar and remove red adhesive tape from bracket (18). Push snorkel (2) back onto A-pillar.

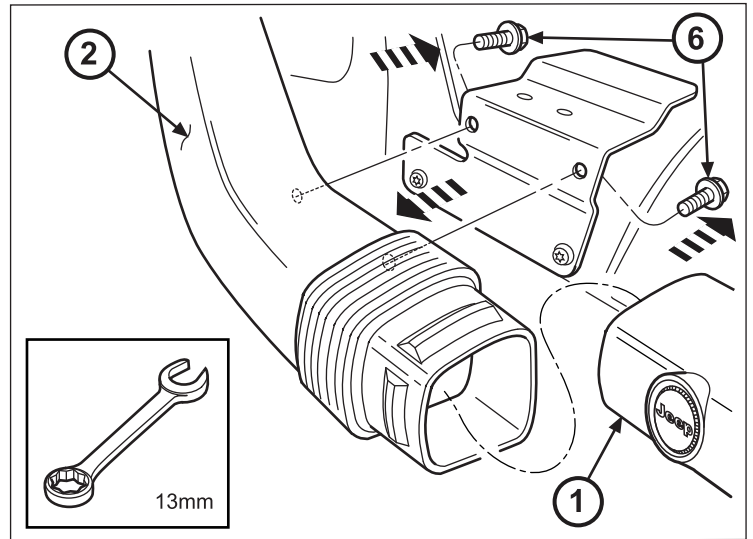


43. Remove the snorkel bracket bolt (19) and washer (21) from snorkel (2), save for reinstallation.

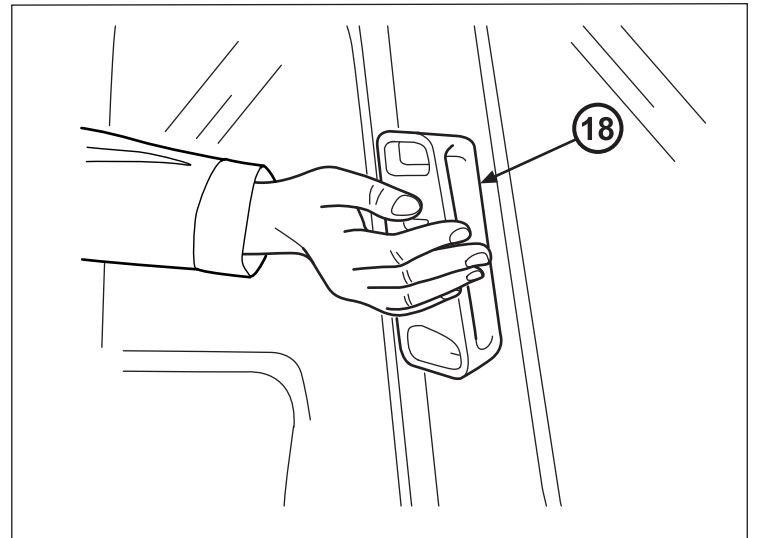


44. Remove two M8 snorkel bolts (6) from A-pillar lamp bracket, with a 13mm wrench. Remove snorkel (2) from lower snorkel (1), to allow access to the upper snorkel bracket.

Save for reinstallation.



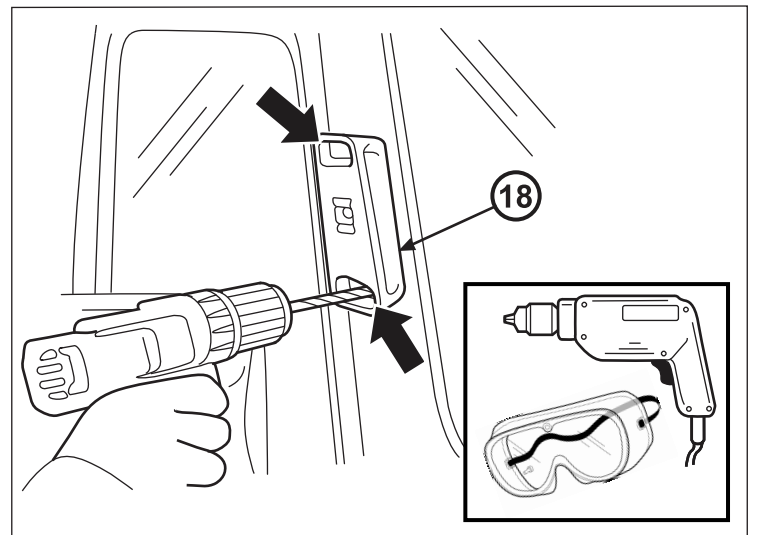
45. Apply heavy hand pressure to the bracket (18) for 30 seconds to ensure good tape contact with windshield sheet metal.



WARNING: Ensure safety glasses are worn when using drill.

46. Using a drill with a 5"-6" extended length 1/8" drill bit, drill a hole through each of the upper snorkel bracket supports (18), into the first layer of sheet metal using the guide holes.

Blow out excess drilling debris from pockets.



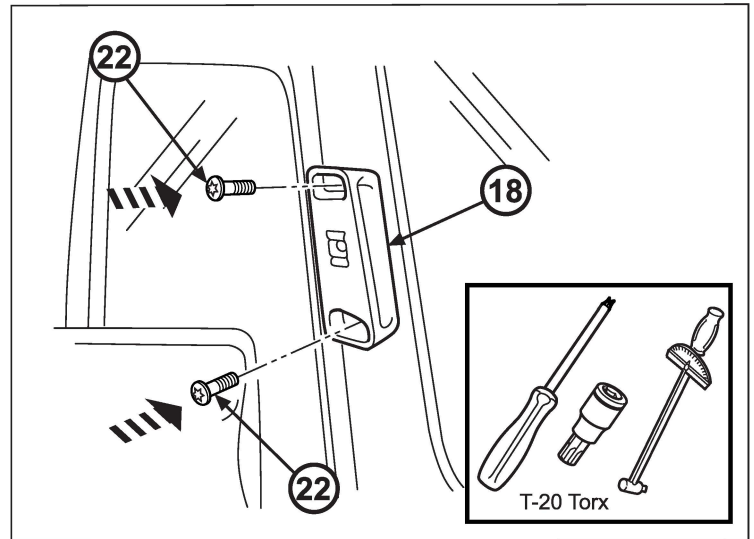
NOTE: Apply Blue Loctite to the threads of the sheet metal screws (22) before installing.

NOTE: While driving the screws (22) in, you will experience an increase in effort required. This is just as the screws are beginning to penetrate the sheet metal so continue and you will notice it loosens up and then come to final torque.

47. Using a T-20 Torx bit driver, start sheet metal screws (22) into each of the two holes drilled through snorkel bracket (18).

Once screws are started into the sheet metal of the A-Pillar, torque each screw until it is firmly seated against the interior flat of the A-Pillar bracket. The bracket (18) will pull in flush with the sheet metal.

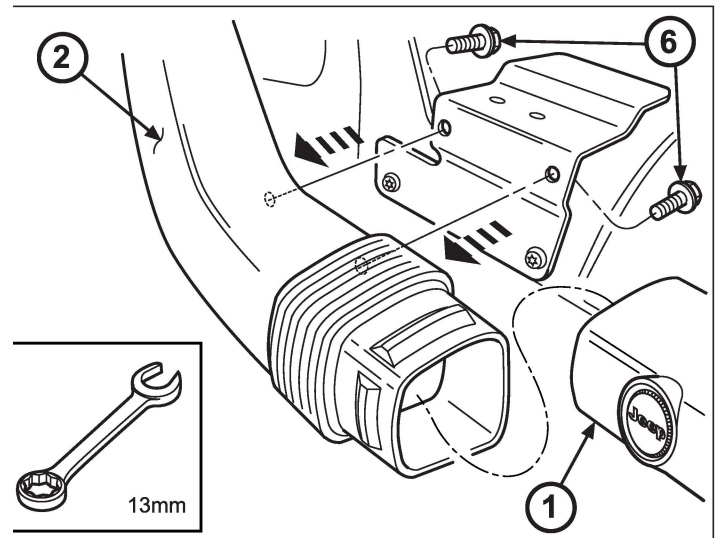
Final torque to 2.5 N.m.



NOTE: Apply Blue Loctite sealant to threads of M8 upper snorkel mounting bolts (6) before installing.

NOTE: Additional lubricant may be needed to assemble the tubes. Use soapy water or rose water on the rubber sealing beads under the reveal. You can also spray the inside end of the lower snorkel (1).

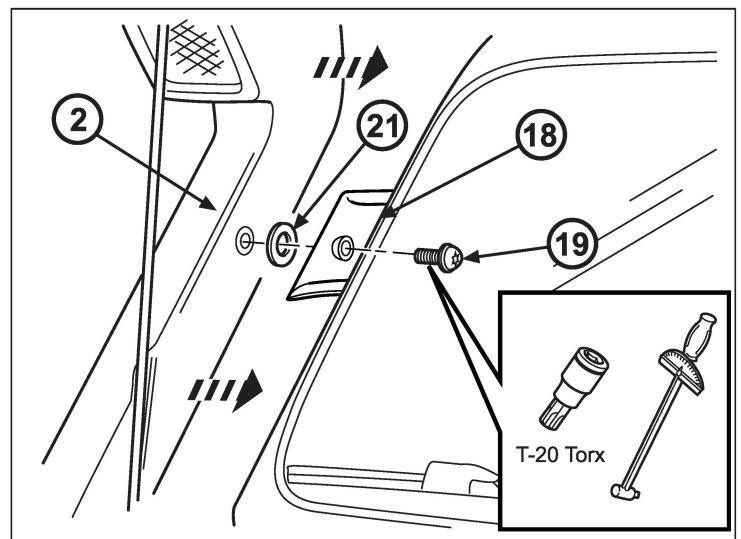
48. Reinstall upper snorkel by first re-inserting the upper snorkel (2) into the lower snorkel (1). Start the two M8 upper snorkel mounting bolts (6).



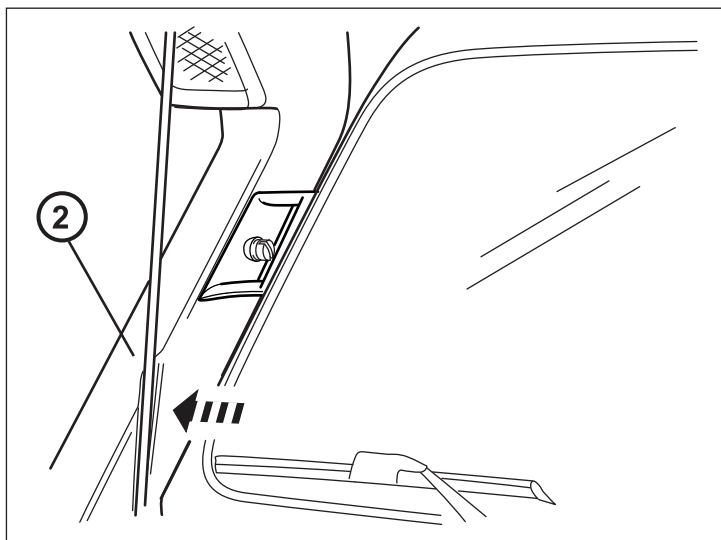
49. Reattach snorkel (2) to the upper snorkel bracket (18) with bolt (19) and washer (21).

Torque bracket bolt (19) to 12 N.m.

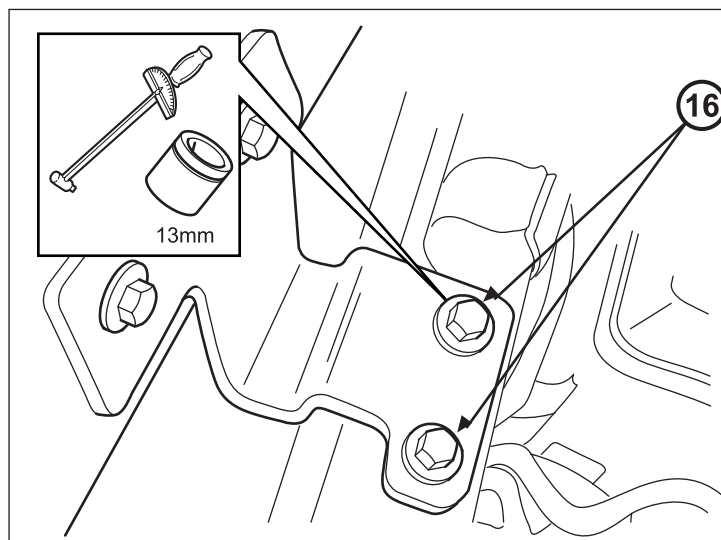
Torque the two M8 mounting bolts (6) to 12 N.m.



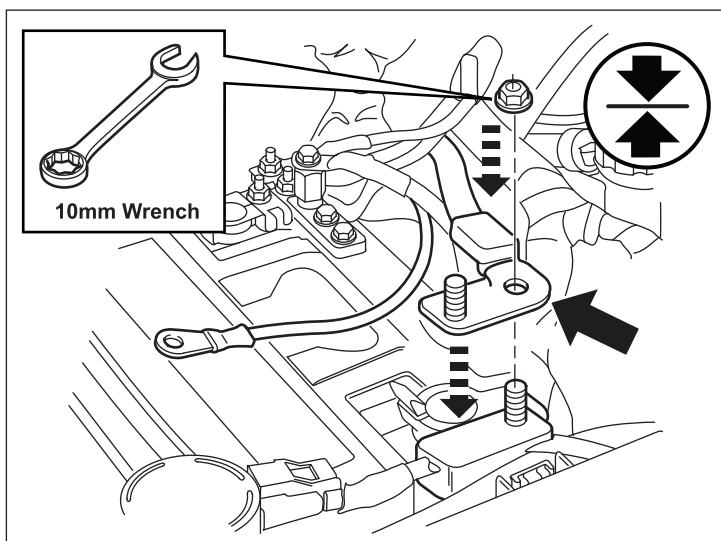
50. Snap antenna into slot on snorkel (2).



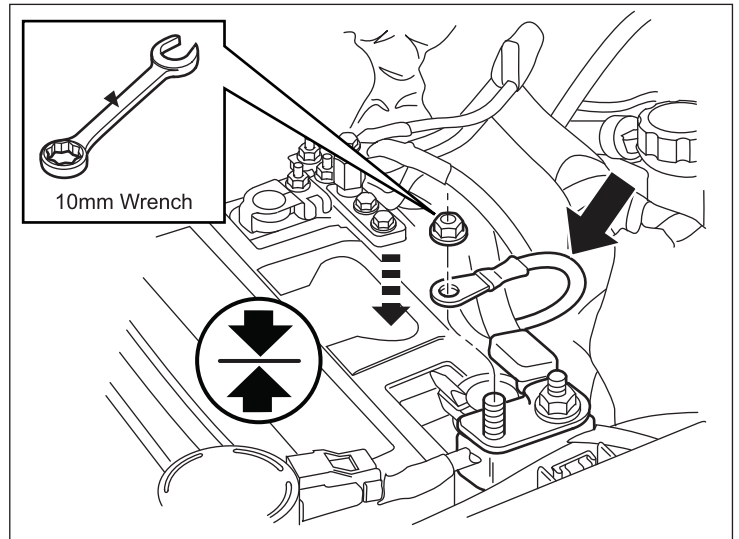
51. Torque fender M6 bolts (16) to 9 N.m.



52. Install the main "-" negative cable and nut, with a 10 mm wrench.

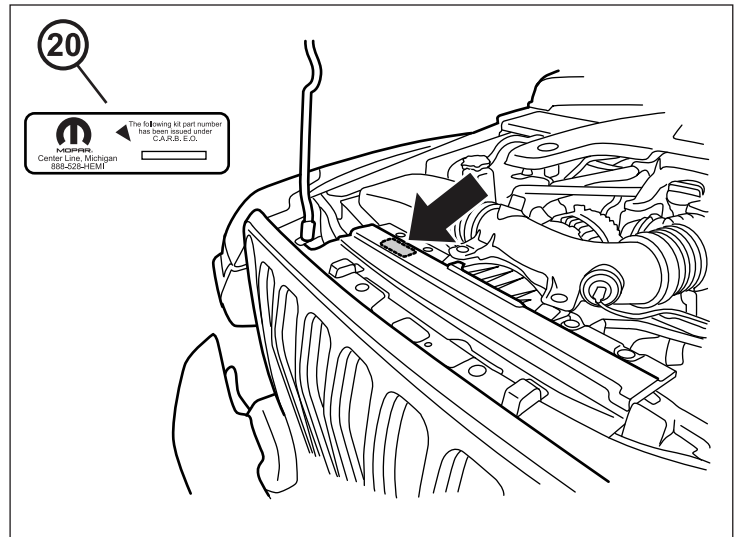


- 53. Install the nut and the supplemental battery cable with a 10mm wrench.

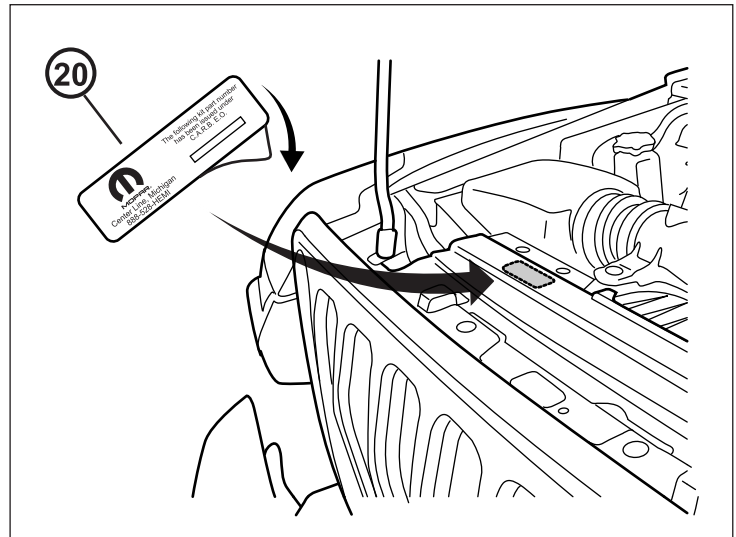


NOTE: PRODUCT INFORMATION LABEL IS REQUIRED TO AID IN PASSING THE CALIFORNIA SMOG CHECK PROGRAM

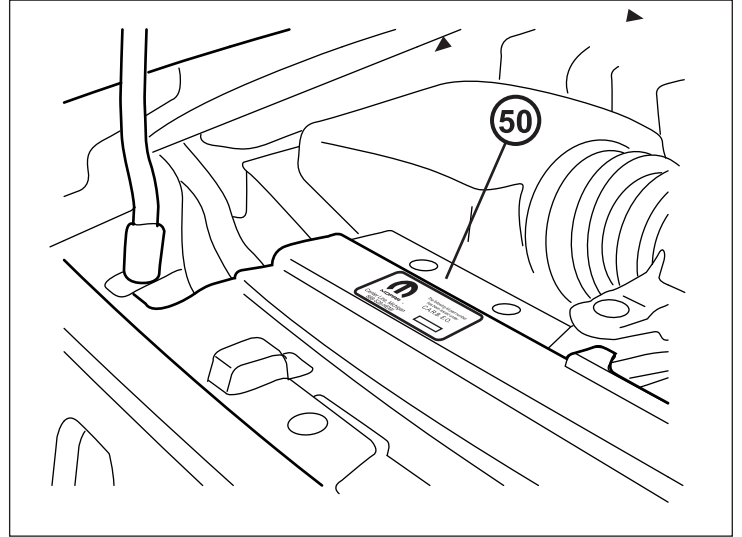
- 54. Locate area for E.O. label (20) on front cowl above radiator.



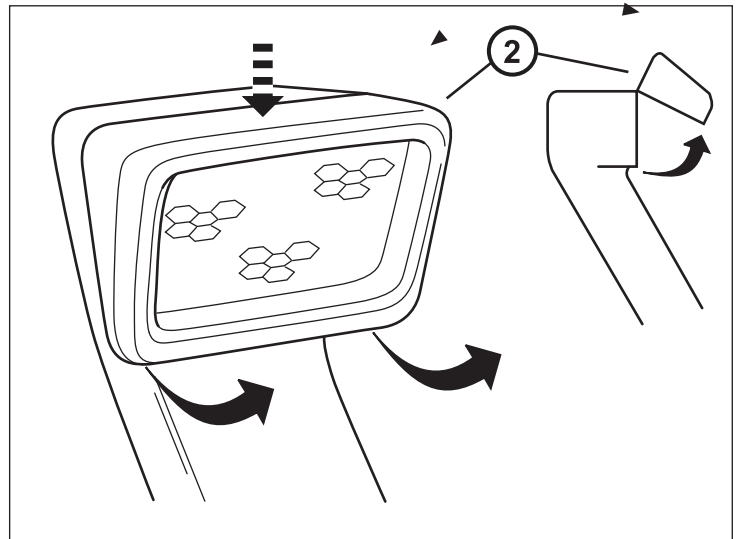
- 55. Peel backing off E.O. label (20), and place in desired location.



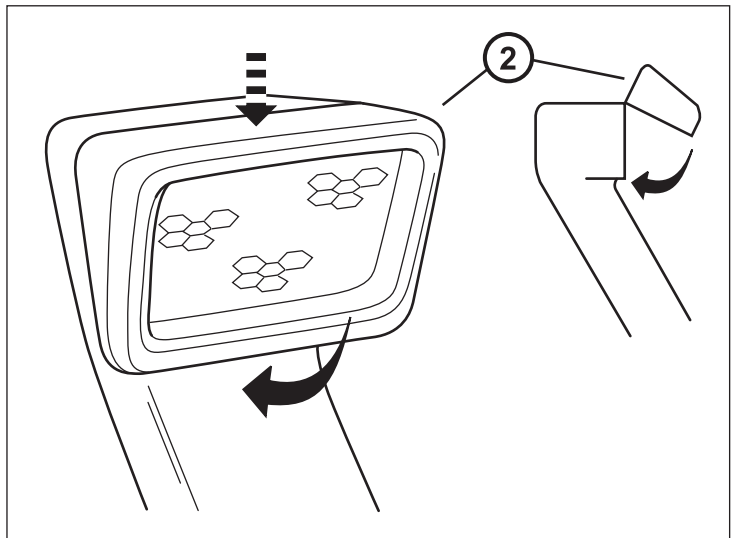
56. Ensure E.O. label (20) is visible to the average person when hood is opened.



57. To clean upper bezel, push down on top of bezel (2), and roll out the bottom.



58. After cleaning, install upper bezel (2) by pushing down on the top and snap in the bottom.



!! WARNING !!

The Mopar Wrangler snorkel is designed to provide clean, dry air to the engine. However, there is a variety of other vehicle electrical and mechanical systems that are not intended to exceed the standard vehicle fording depth.

It is the vehicle owners responsibility to read and follow the owner's manual for appropriate water fording depths.