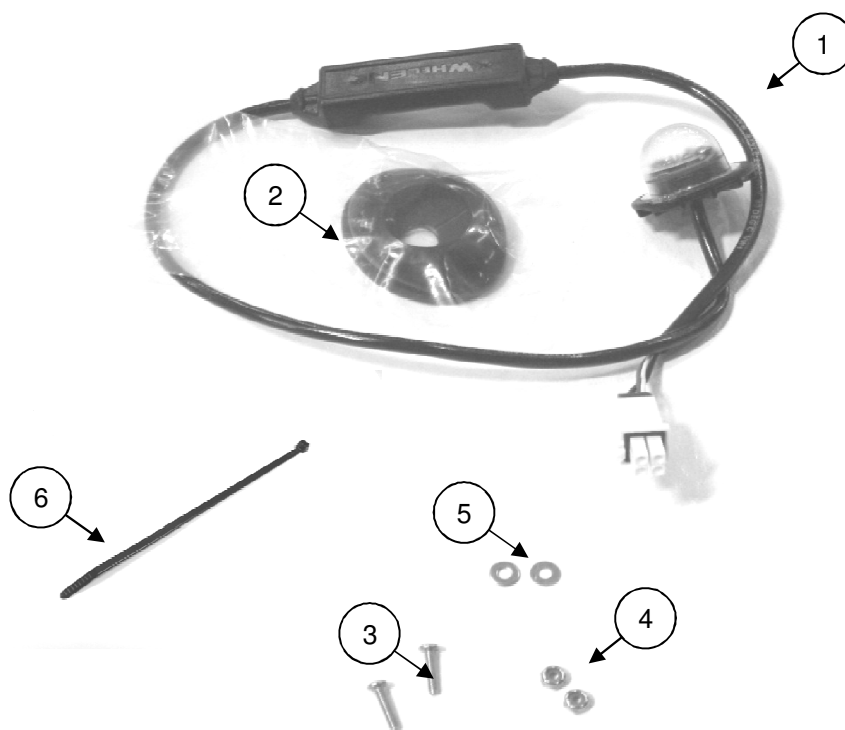




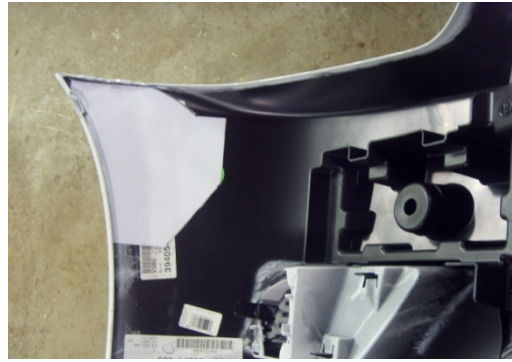
## Front Corner Lights

### DODGE CHARGER

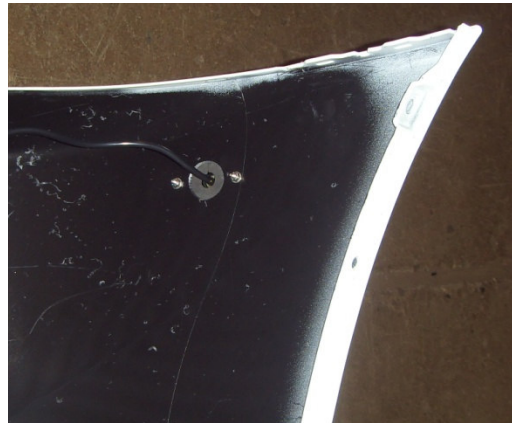


Item	Qty	Description
1	2	Corner Lights - FRT Clear 8"
2	2	Foam sealer
3	4	4-40x1/2 SS Phillip DR Pan HD
4	4	4-40 SS Nylok
5	4	#4 SS Flat Washer
6	2	7" wire tie

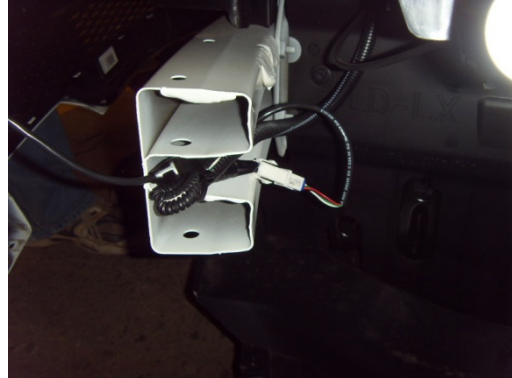
1. Refer to official Chrysler procedure to remove and install OEM parts listed in this procedure.
2. Remove front fascia.
3. Place template Appendix A in position on the underside of front fascia, drill (3) holes 1/8" diameter for LED installation mounting screws. Picture 1.
4. Use a hole saw 1" diameter to cut centre hole for LED's. Using a de-burring tool ensure edges are smooth.
5. Flip over template and repeat steps 3 & 4 on the other side of the front fascia.
6. Install the foam sealer (item 2) to back of LED lights.
7. Secure LED lights (item 1) to fascia using provided hardware (items 3, 4 & 5). Picture 2.
8. Locate connectors on the front harness P/N 82213016. And connect led lights to harness.
9. Secure excess wire to front beam on existent hole using provided wire tie (item 6). Picture 3.
10. Reinstall front fascia. Picture 4.



1.



2.



3.



4.