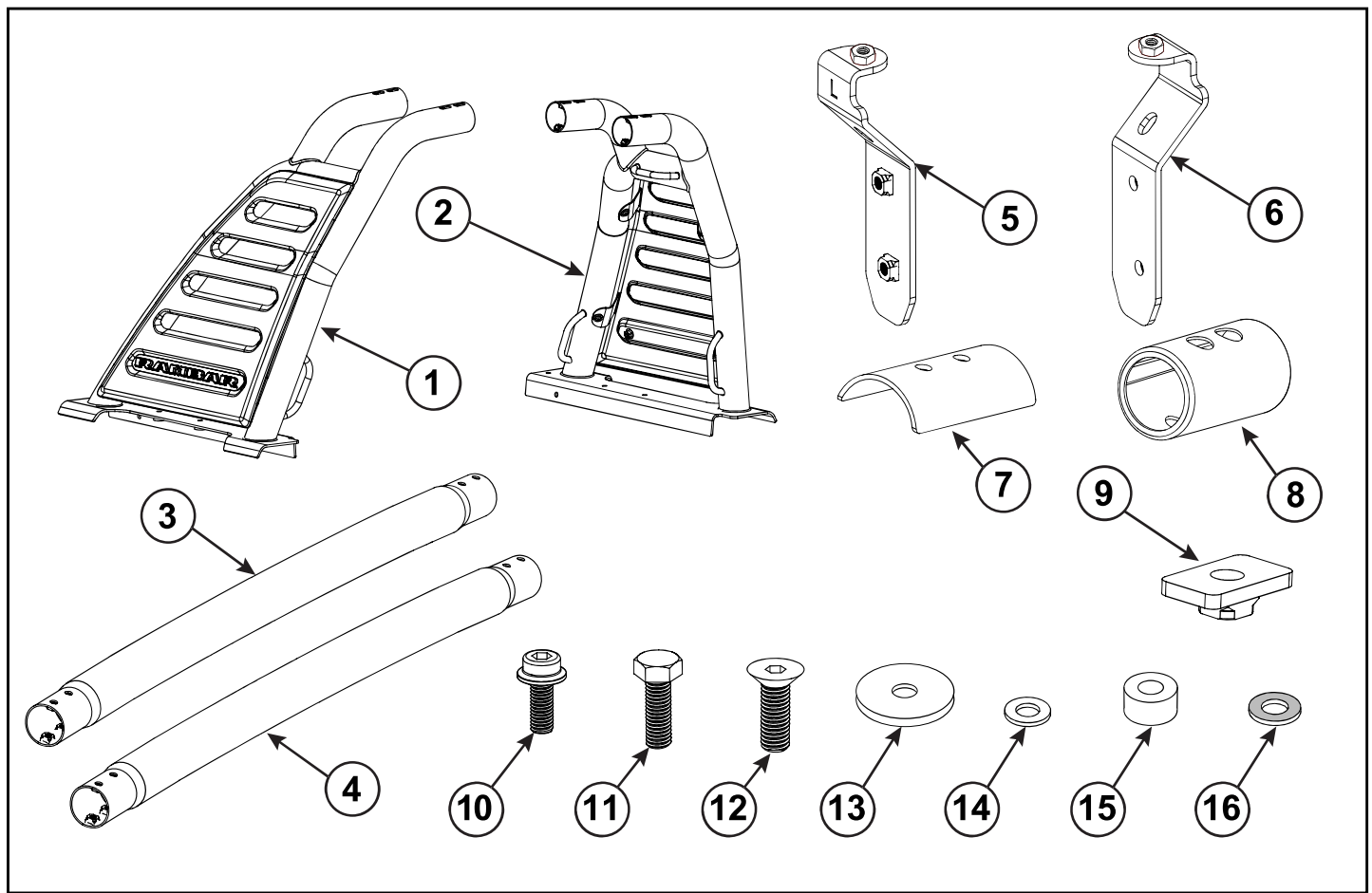
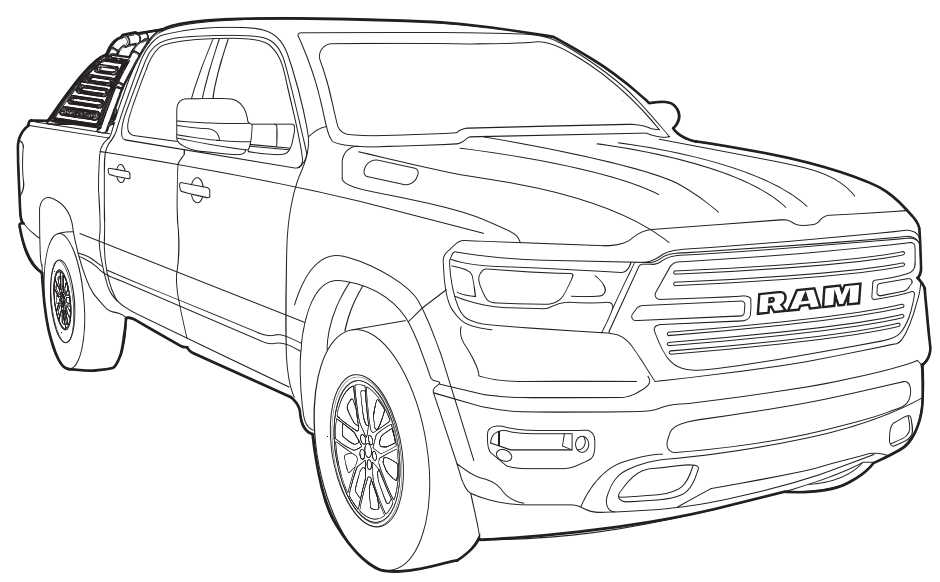


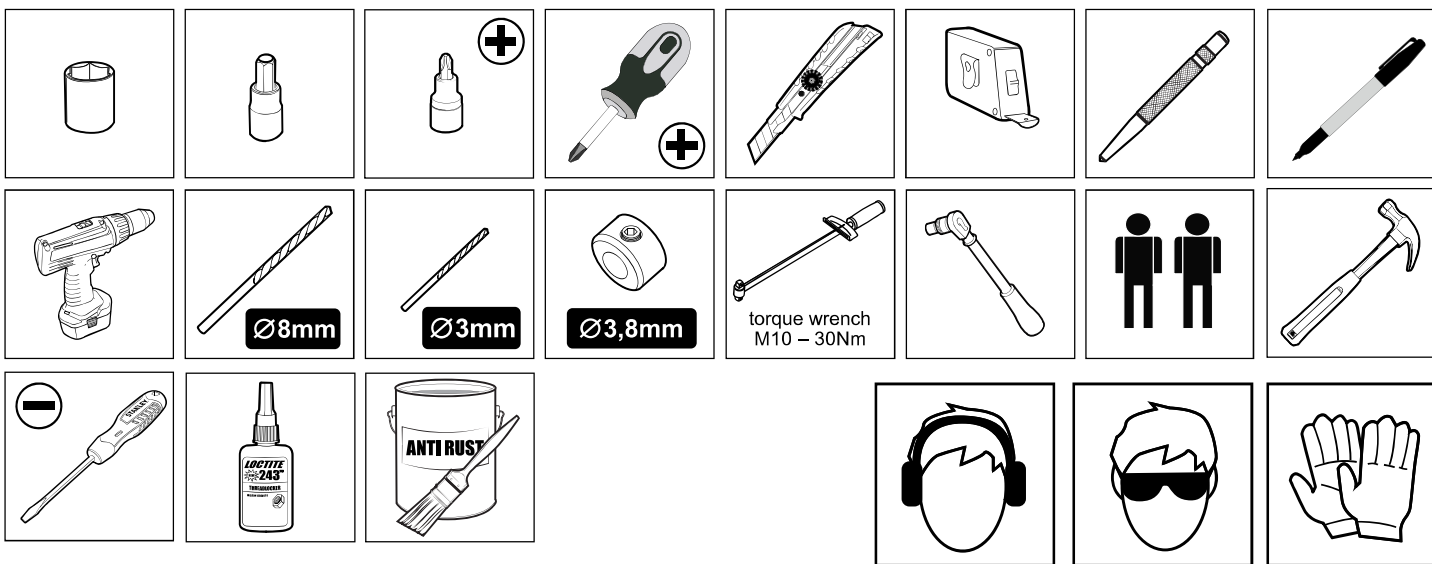


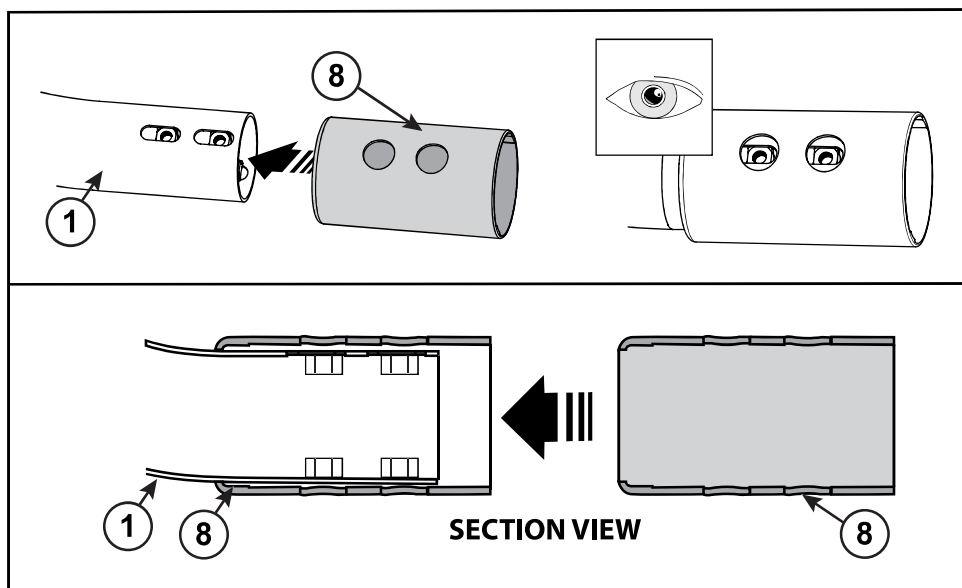
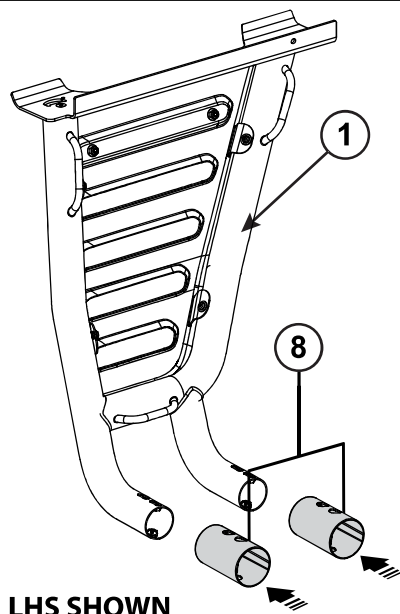
# RAM RAMBAR SPORTS BAR

www.mopar.com

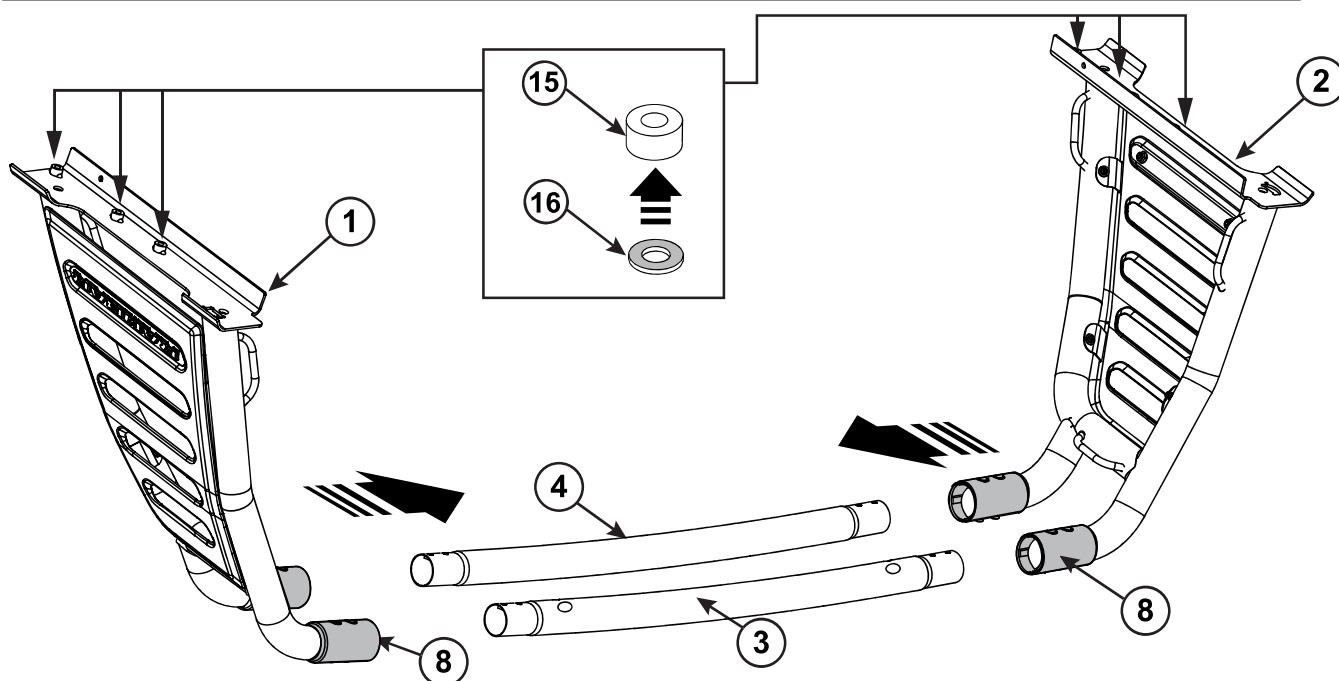
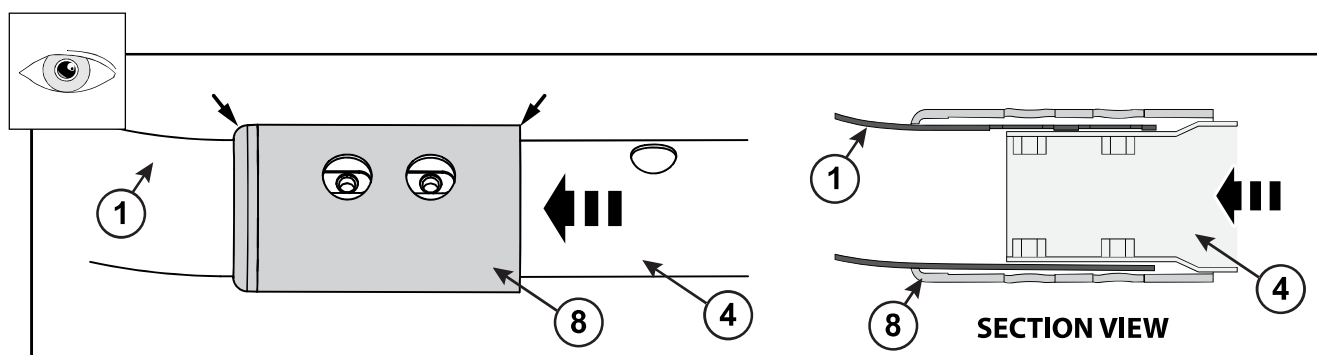


Call Out	Description	Quantity	Part Number
1	LHS Leg	1	82215959AC
2	RHS Leg	1	
3	Front Tube	1	
4	Rear Tube	1	
5	LHS Foot	1	
6	RHS Foot	1	
7	Joiner Plate	8	
8	Joiner	4	
9	Foot Plate Rail Bracket	8	
10	M8x20mm Flanged Allen Bolt	16	
11	M8x35mm Hex Head Bolt	12	
12	M8x20mm Countersunk Bolt	2	
13	Large Flat Washer	2	
14	M8x1.6mm Flat Washer	10	
15	Spacer	6	
16	Adhesive Washer	6	

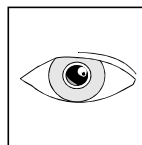
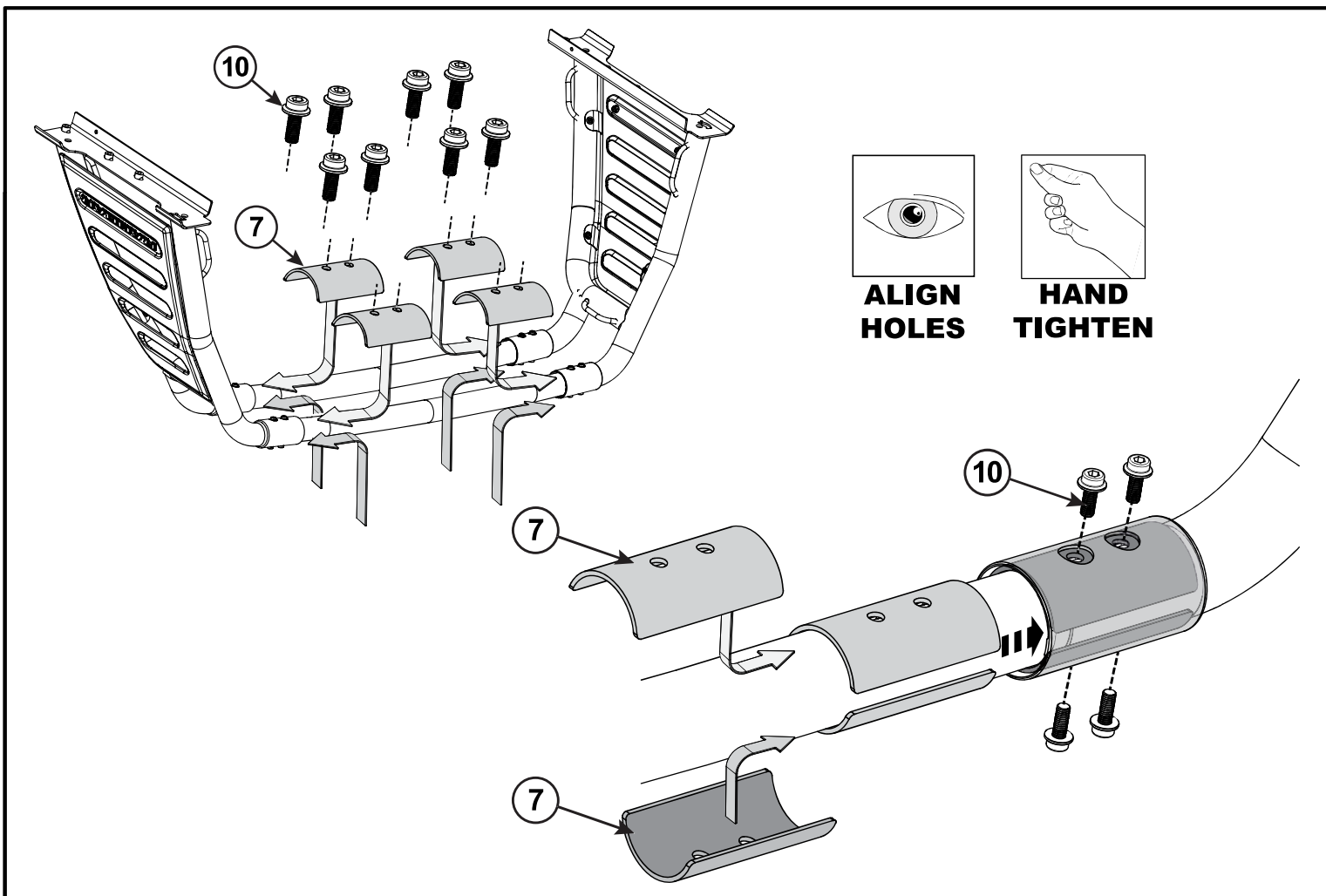




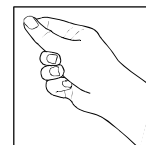
1. Assemble the Joiners (8) to the LHS Side legs (1) by sliding the curved end over the bar first. Align the holes in the plastic Joiners with the slots in the bar as shown. Repeat the process for the RHS Side Legs (2).



2. Assemble the Sports Bar by sliding the Front (3) and Rear (4) Tubes into the Side legs (1&2). Push the tubes into the Side legs and align the weld nuts in the Tubes with the holes in the plastic Joiners (8). Apply Adhesive Washer (16) to the Spacer (15). Apply Spacers (15) to the six locations on the Side Legs (1&2) as shown.

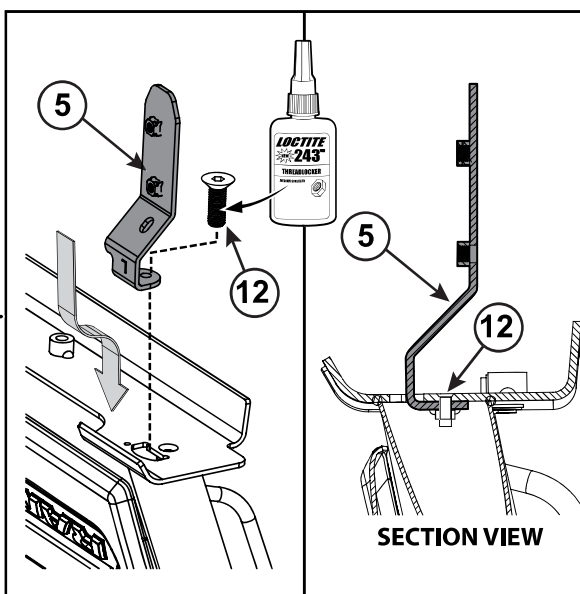
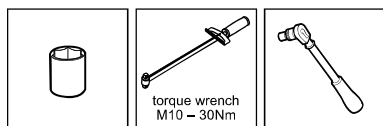
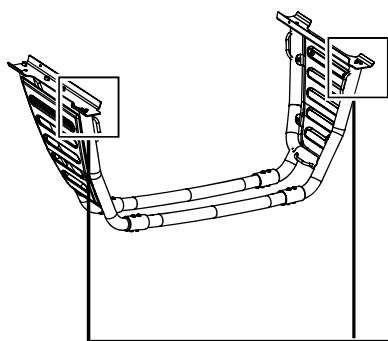


**ALIGN  
HOLES**

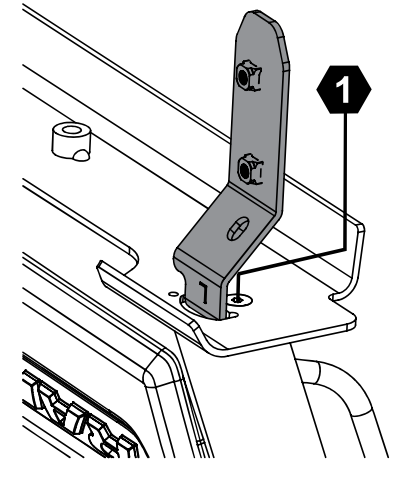


**HAND  
TIGHTEN**

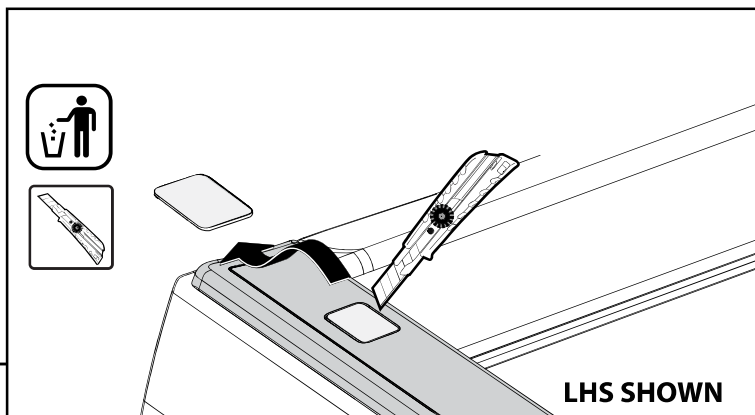
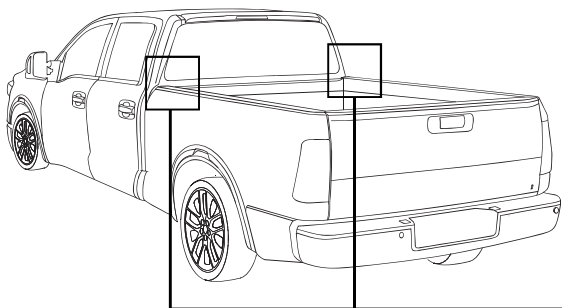
- 3.** Slide the Joiner Plates (7) into the gaps between the plastic Joiners and the Tubes and align. Secure the Tubes together with the flanged bolts (10). Do not tighten.



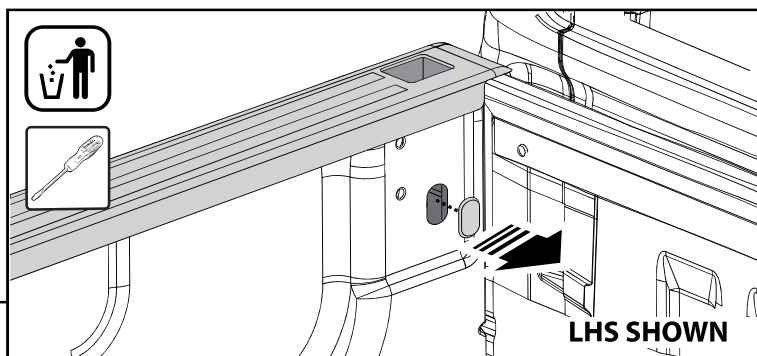
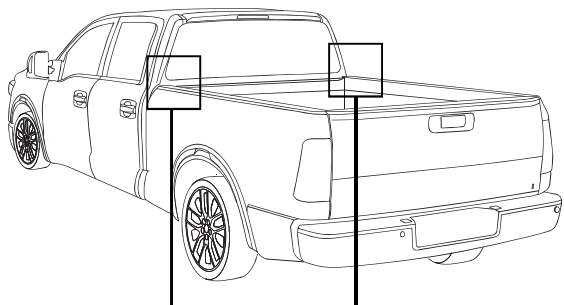
**1** 24 Nm



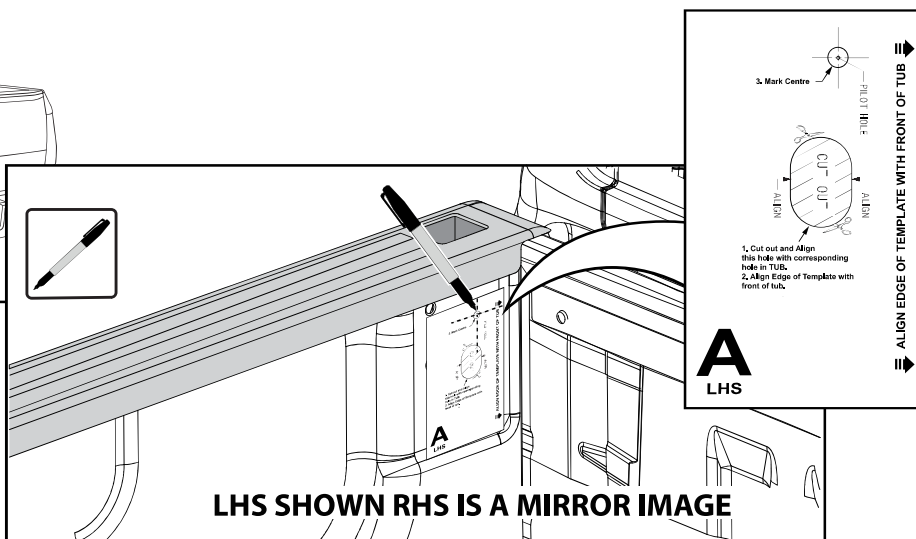
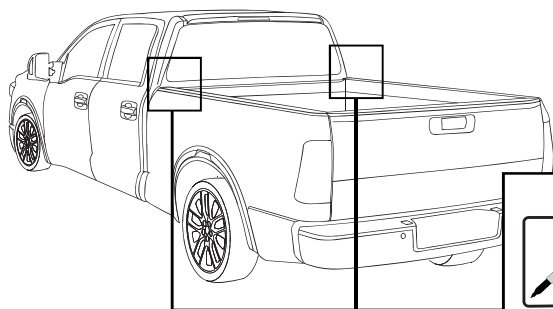
- 4.** Apply Loctite to the threads on the Countersunk Hex Head Bolt (12) and assemble the Left Hand Side Front Foot (5) onto the tub rail bracket using the Countersunk Hex Head Bolt (12). Torque bolt to 24Nm.



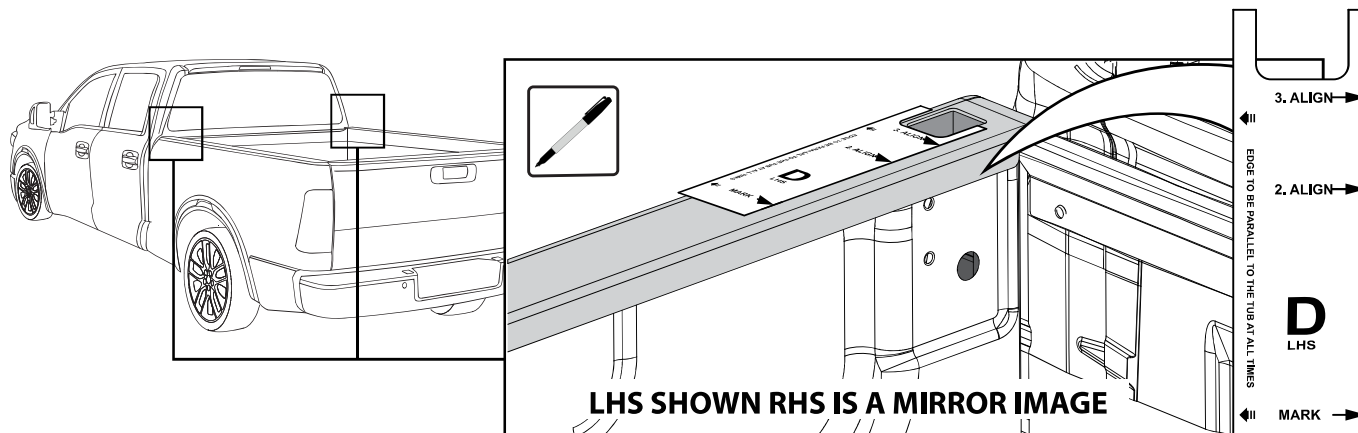
5. Using a knife carefully cut out the plastic insert at the front of the LHS and RHS bed rail caps to open the clearance holes for the front feet of the Sports Bar.



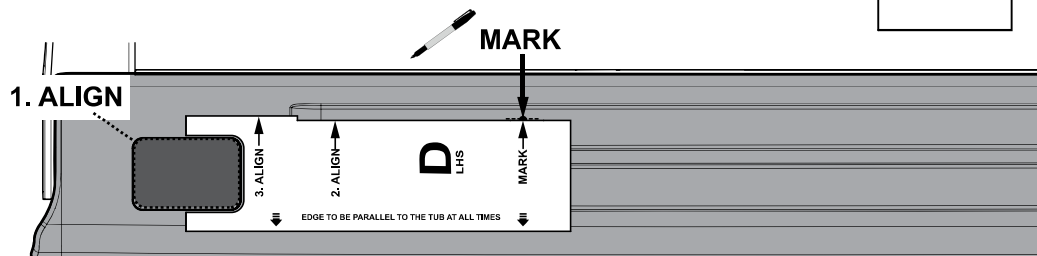
6. Remove and discard the LHS and RHS plastic side plugs from the vehicle tub.



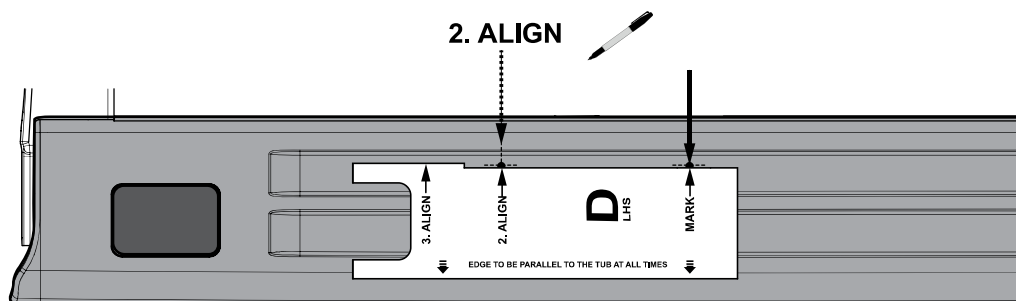
7. Carefully cut out **TEMPLATE A LHS** on page 9 and align the oval cutout hole in the template with the oval hole in the tub. Mark the 'pilot hole' point with a non permanent marker as shown through to the vehicle. Repeat for the RHS using the **TEMPLATE B RHS** page 10.



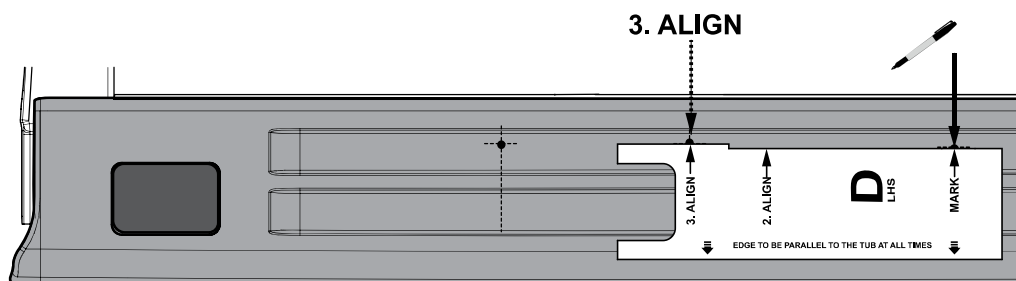
- 1** ALIGN TEMPLATE CUTOUT WITH CUTOUT IN BED RAIL CAP AND MARK THE FIRST HOLE LOCATION



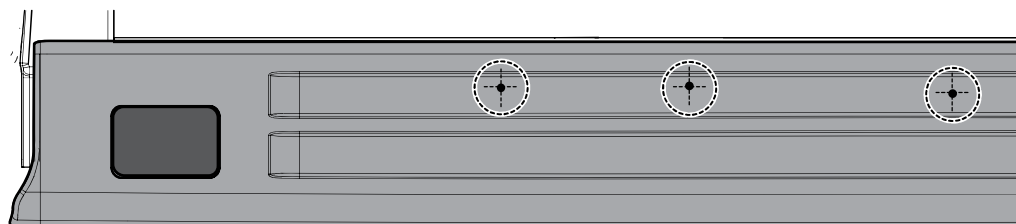
- 2** ALIGN THE "ALIGN2" POSITION WITH THE PREVIOUS MARK AND MARK THE SECOND HOLE LOCATION



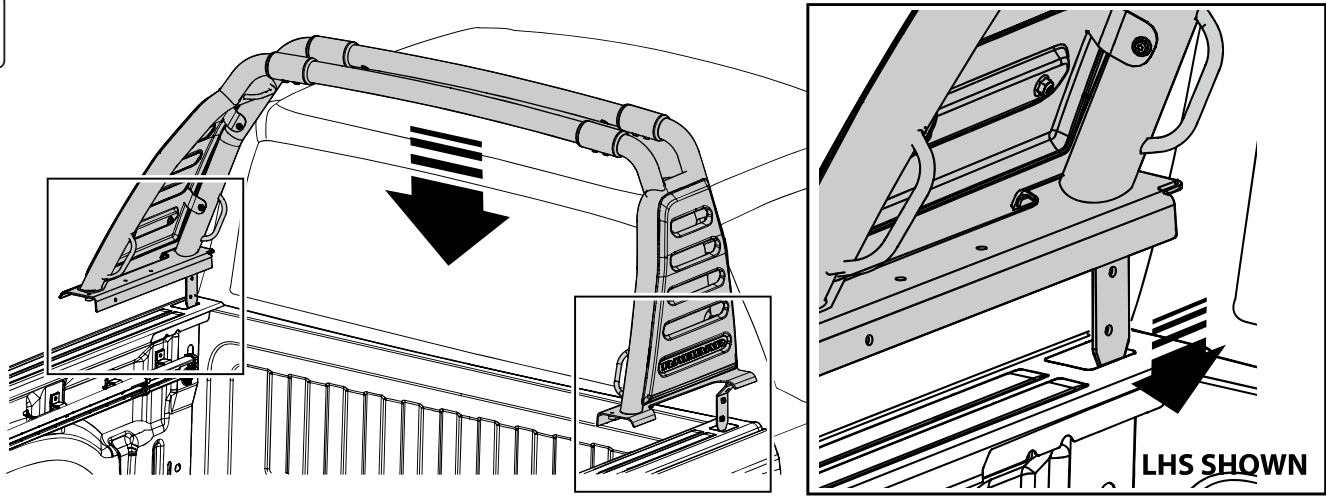
- 3** ALIGN THE "ALIGN 3" POSITION WITH THE PREVIOUS 2ND MARKED HOLE AND MARK THE THIRD AND FINAL HOLE LOCATION.



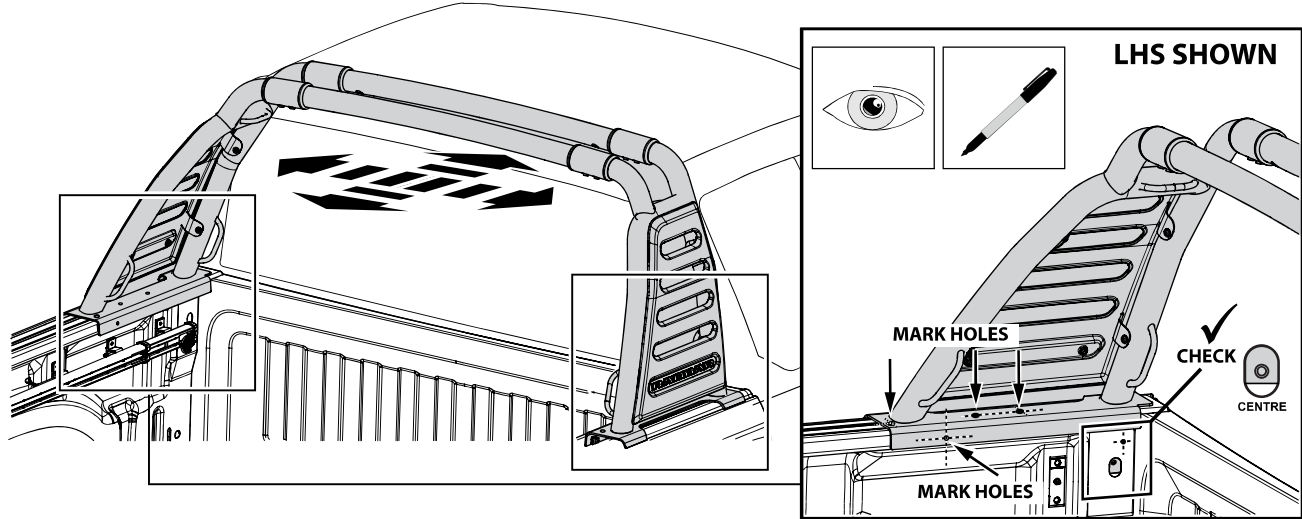
- 4** REMOVE THE TEMPLATE AND DRILL OR CUT 22mm HOLES TAKING CARE NOT TO DAMAGE THE STEEL BELOW THE PLASTIC BED RAIL CAP.



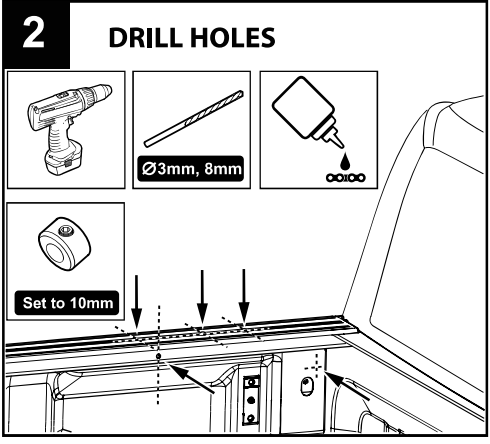
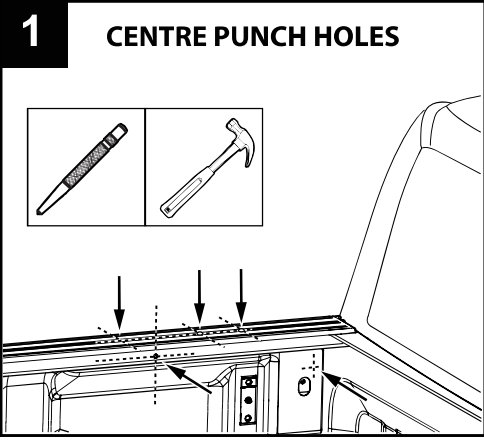
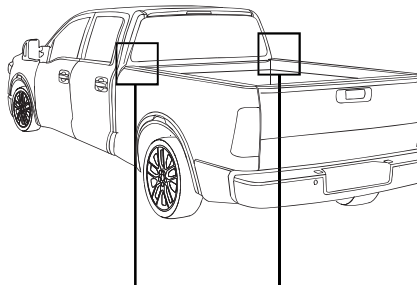
- 8.**
- 1** Carefully cut out **TEMPLATE C LHS** on page 11 and align the cutout in the template with previously made rectangular cutout on the plastic bedrail cap as shown. Mark the first hole location.
  - 2** Move the template forward and **ALIGN THE "ALIGN 2"** position printed on the template with the first marked hole and mark the second hole location as shown.
  - 3** Move the template forward again and **ALIGN THE "ALIGN 3"** position printed on the template with the previously marked second hole and mark the third and final hole location.
  - 4** Remove the template and drill or cut 22mm holes at each of the three marked positions **ONLY** on the plastic bed rail cap taking care not to damage the steel below.
- Repeat Steps 1-4 for the RHS using **TEMPLATE D RHS** on page 12.



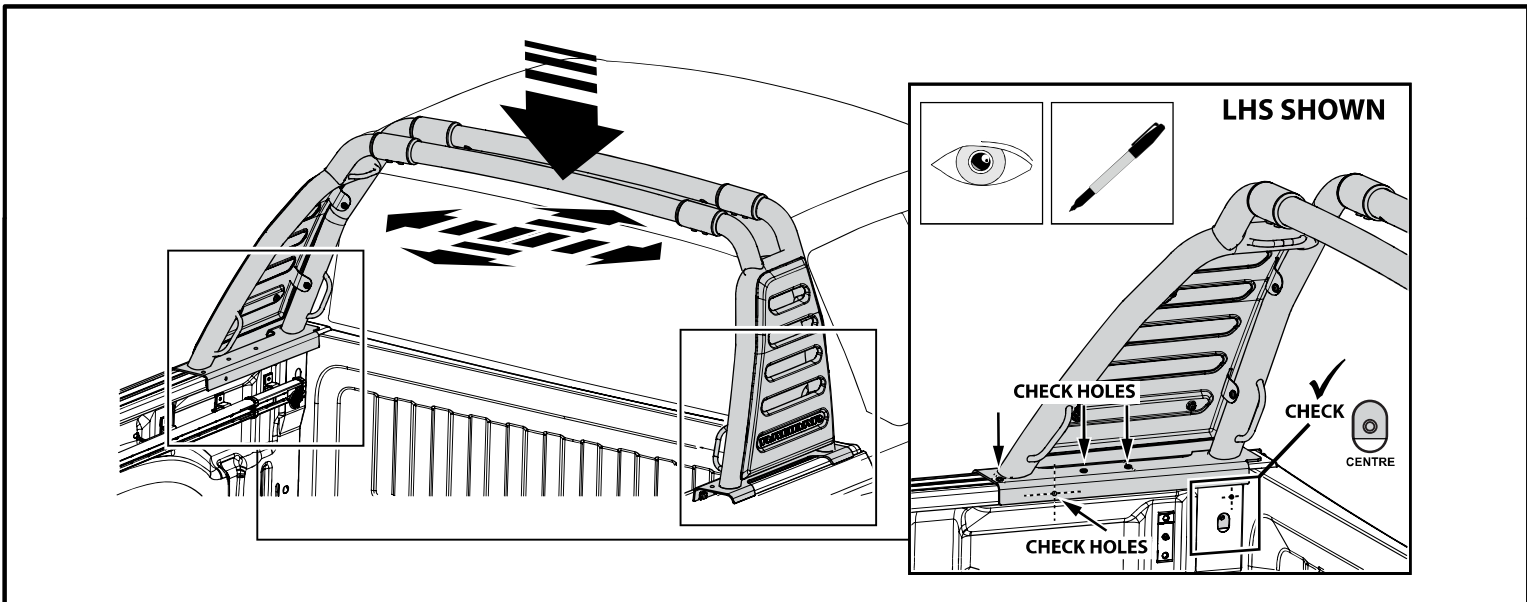
9. Using two people carefully lift the sports bar into position above the tub and slowly lower the Sports Bar Front Foot through the bed rail hole and lower the sports bar assembly onto the tub of the vehicle. Align the bar carefully and check that all drilled holes in the tub align with the holes in the bar.



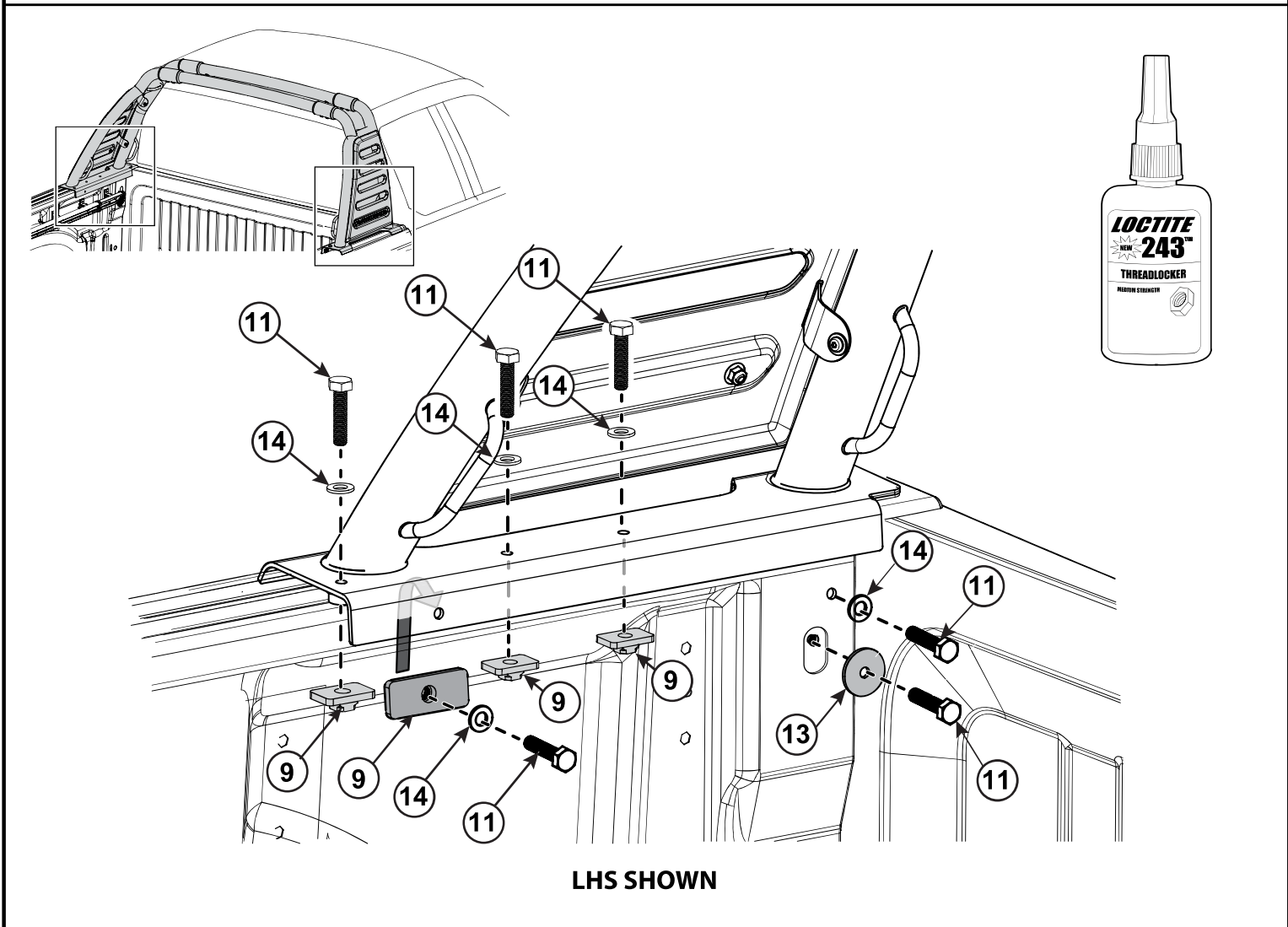
10. Align the bar carefully with the side rails and the front edge of the tub and position it in the precise position it will be attached to the vehicle. Check the threaded hole in the Front Foot is centred and mark the locations of the four other holes onto the tub with a marker. Remove the Sports Bar.



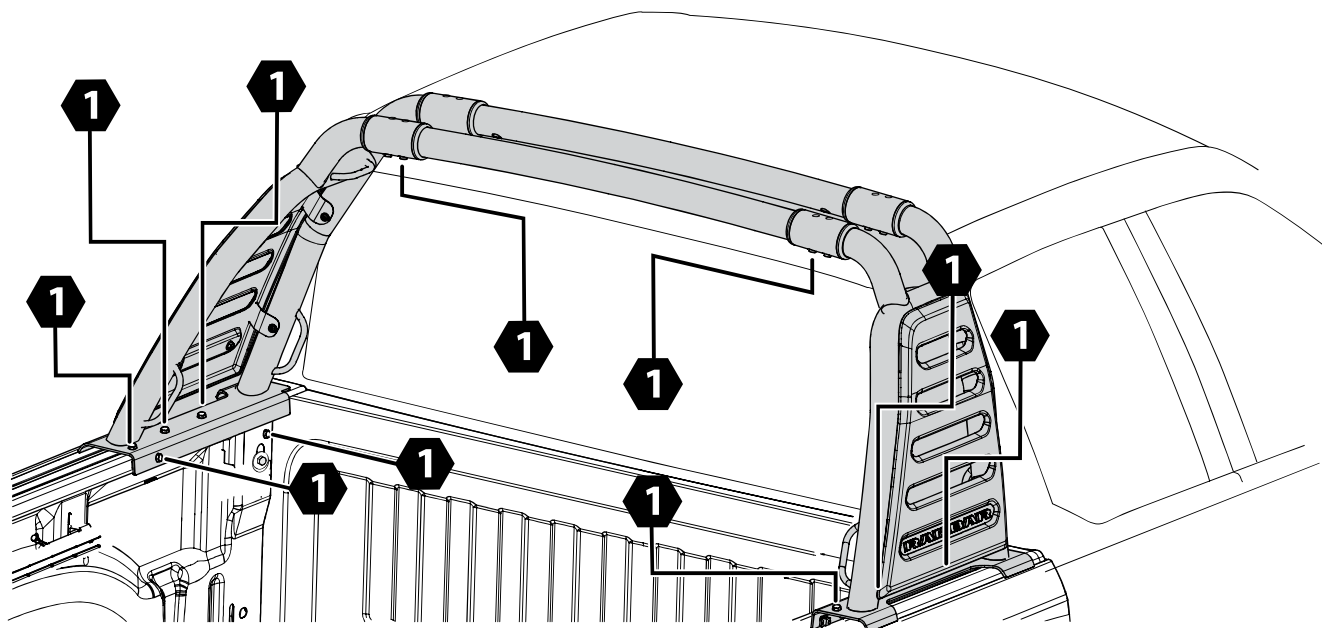
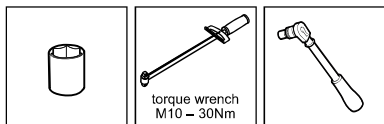
11. Centre punch the five marked hole positions and drill each hole with a 3mm drill bit then with an 8mm drill bit using a drill stop at 10mm. Clean up any metal swarf and coat exposed metal with rust inhibitor. Repeat for the RHS.



**12.** Re-install and align the bar carefully with the side rails and the front of the tub and check that all the holes in the sports bar align with the drilled holes in the tub on both sides.

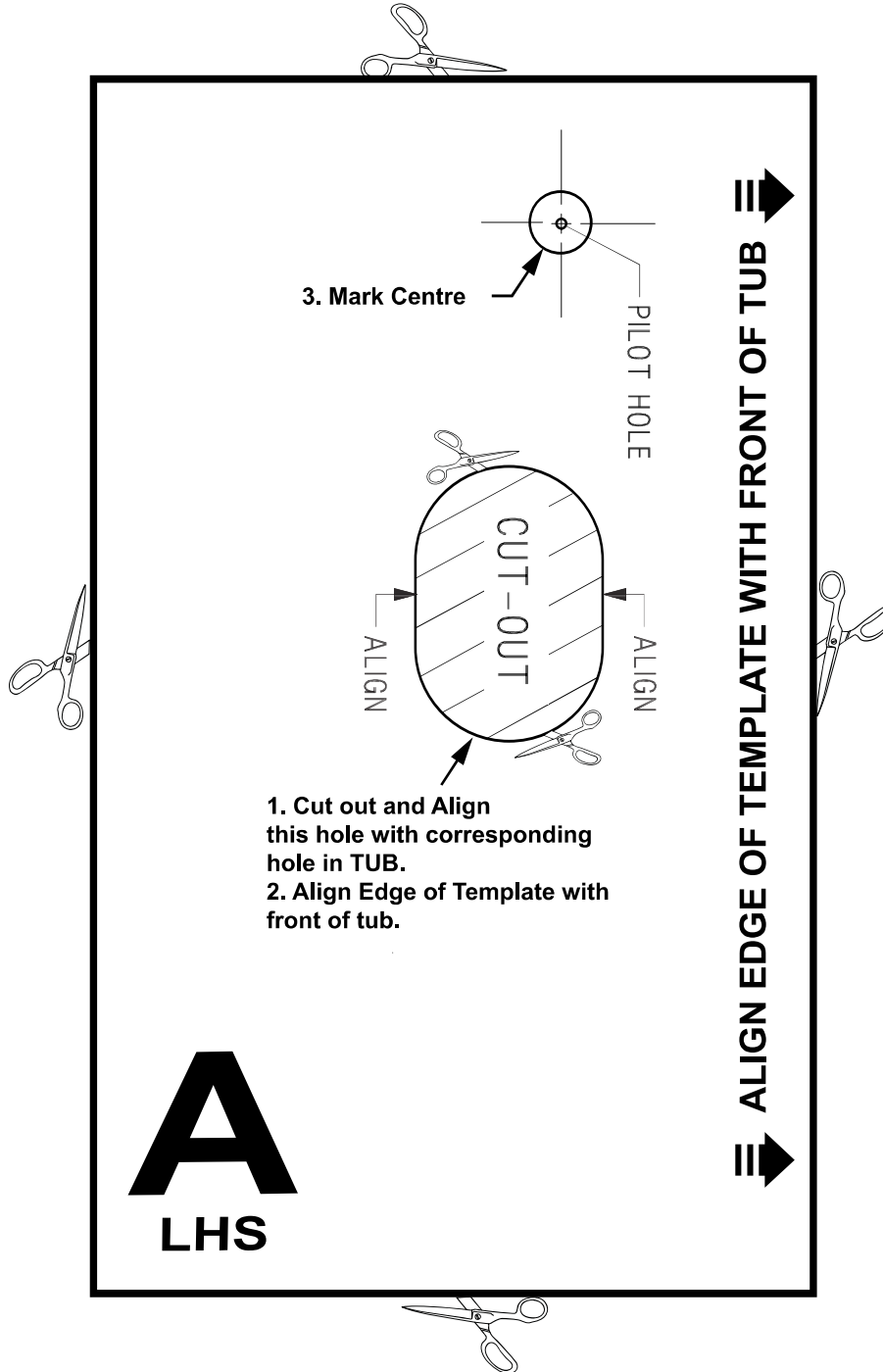


**13.** Apply Loctite to the M8 Bolts (11) and loosely attach the bar to the tub using the Foot Plate Rail Bkt (9), M8 Bolt (11), M8 Washer (14) and Large Washer (13).



- 14.** Centralize and check the final position and alignment of the bar on the tub. Tighten all bolts on the tub (11), (12) to the recommended torque of 24Nm .


# RAM SPORTS BAR SIDE CUT TEMPLATE A-LHS

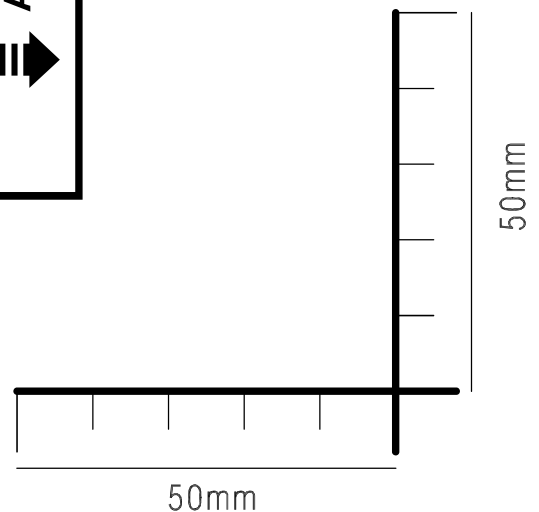


- 1. Cut out and Align this hole with corresponding hole in TUB.
- 2. Align Edge of Template with front of tub.

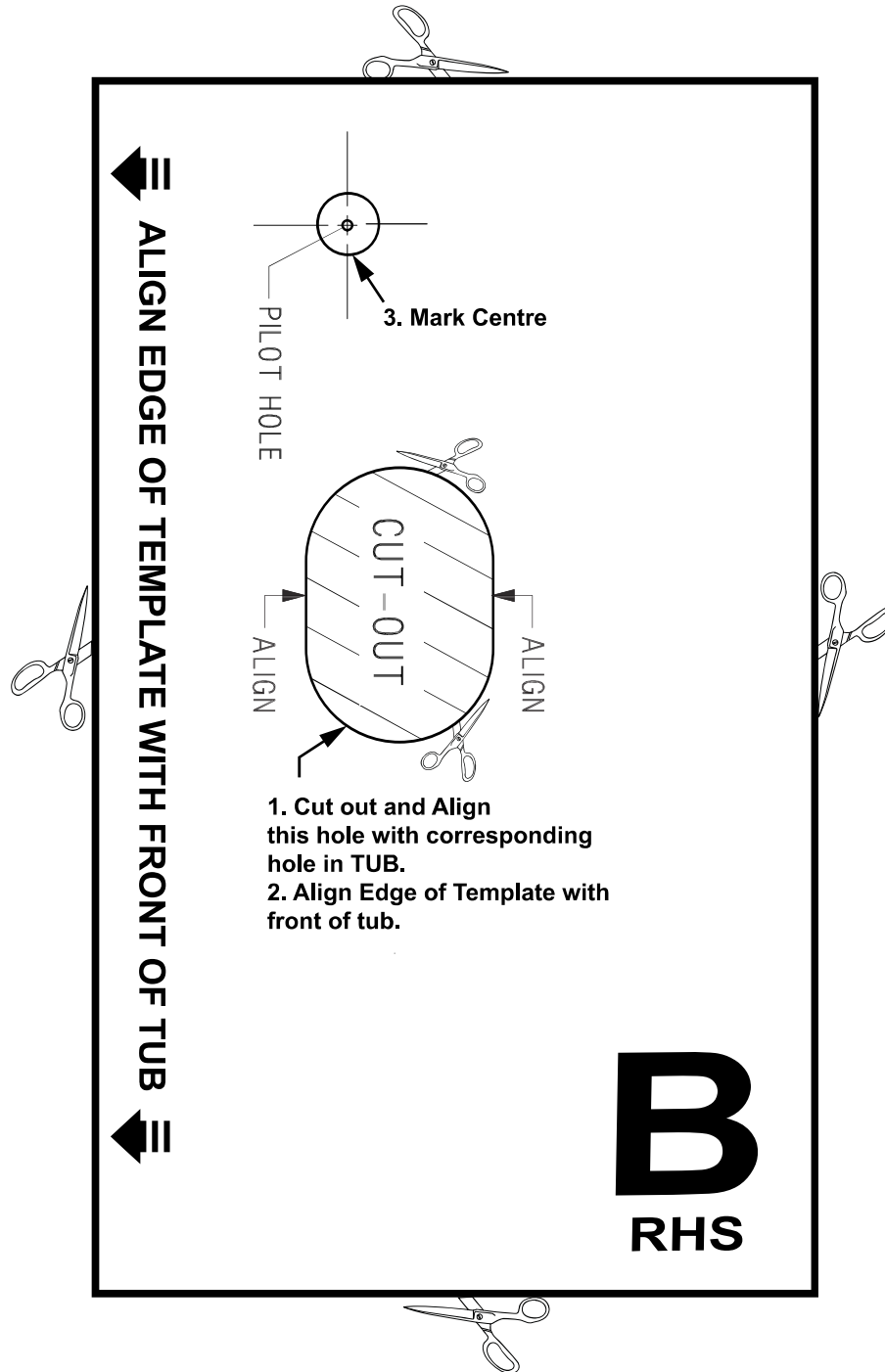
**A**  
**LHS**

ALIGN EDGE OF TEMPLATE WITH FRONT OF TUB


**Important**  
 Always confirm the length of the 50mm marker before cutting out the templates.

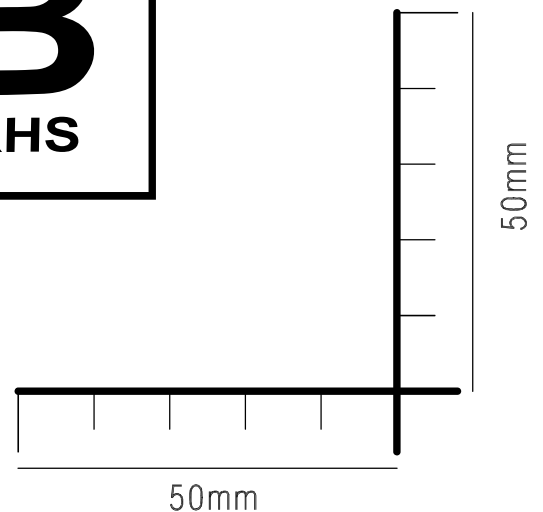


# RAM SPORTS BAR SIDE CUT TEMPLATE B-RHS

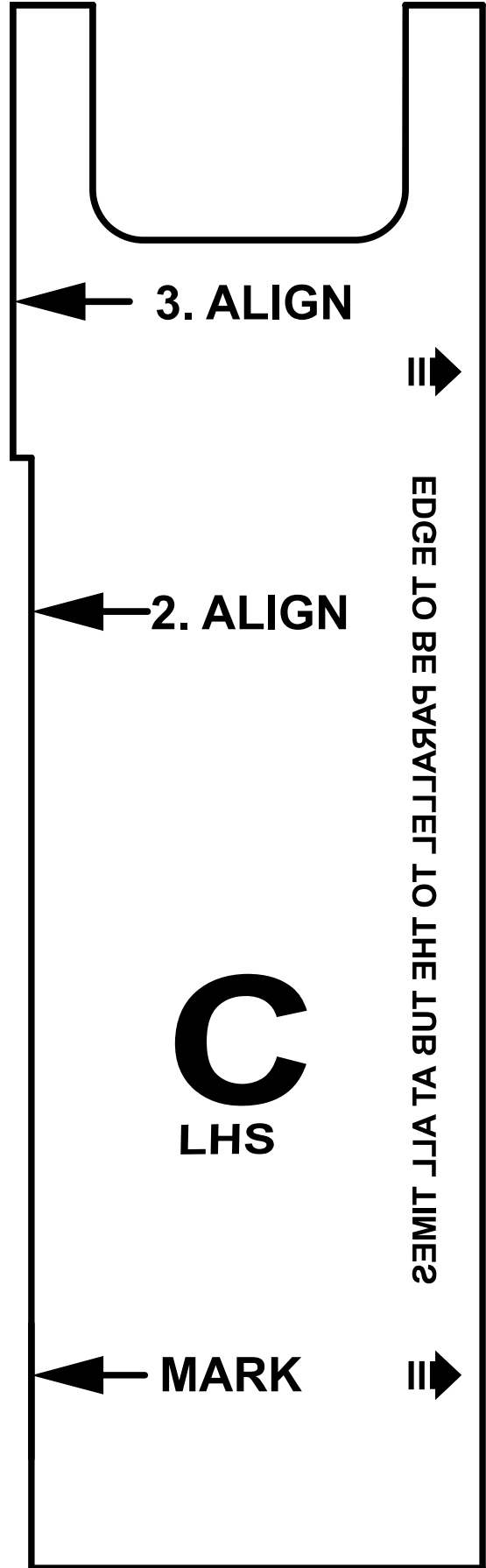



Sheet Size: A4  
Scale: 1:1

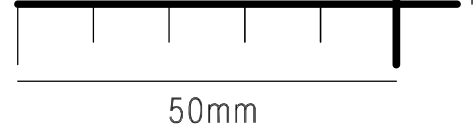
**Important**  
 Always confirm the length of the 50mm marker before cutting out the templates.




# RAM SPORTS BAR SIDE CUT TEMPLATE C-RHS



**Important**  
 Always confirm the length of the 50mm marker before cutting out the templates.



# RAM SPORTS BAR SIDE CUT TEMPLATE D-LHS

**Important**  
 Always confirm the length of the 50mm marker before cutting out the templates.

Sheet Size: A4  
Scale: 1:1

