

# ROUGH COUNTRY

## SUSPENSION SYSTEMS®

PW059331

### 11-14 Chevy Silverado 2500-3500 Manual Bed Step

#### THANK YOU FOR CHOOSING ROUGH COUNTRY FOR ALL OF YOUR VEHICLE NEEDS.

Rough Country recommends a certified technician install this system. In addition to these instructions, professional knowledge of disassembly/reassembly procedures as well as post installation checks must be known. Attempts to install this system without this knowledge and expertise may jeopardize the integrity and/or operating safety of the vehicle. Please read instructions before beginning installation. Check the kit hardware against the parts list on this page and the product layout on the last page. Be sure you have all needed parts and know where they go. Also please review tools needed list and make sure you have needed tools.

#### ⚠ WARNING

#### PRODUCT USE INFORMATION

Rough Country makes no claims regarding lifting devices and excludes any and all implied claims. We will not be responsible for any product that is altered.

If questions exist we will be happy to answer any questions concerning the design, function, and correct use of our products.

#### ⚠ NOTICE

#### NOTICE TO DEALER AND VEHICLE OWNER

Any vehicle equipped with any Rough Country product should have a "Warning to Driver" decal installed on the inside of the windshield or on the vehicle's dash. The decal should act as a constant reminder for whoever is operating the vehicle of its unique handling characteristics. Re-torque all installed hardware as often as possible to ensure safe operation.

INSTALLING DEALER - it is your responsibility to install the warning decal and forward these installation instructions on to the vehicle owner for review. These instructions should be kept in the vehicle for its service



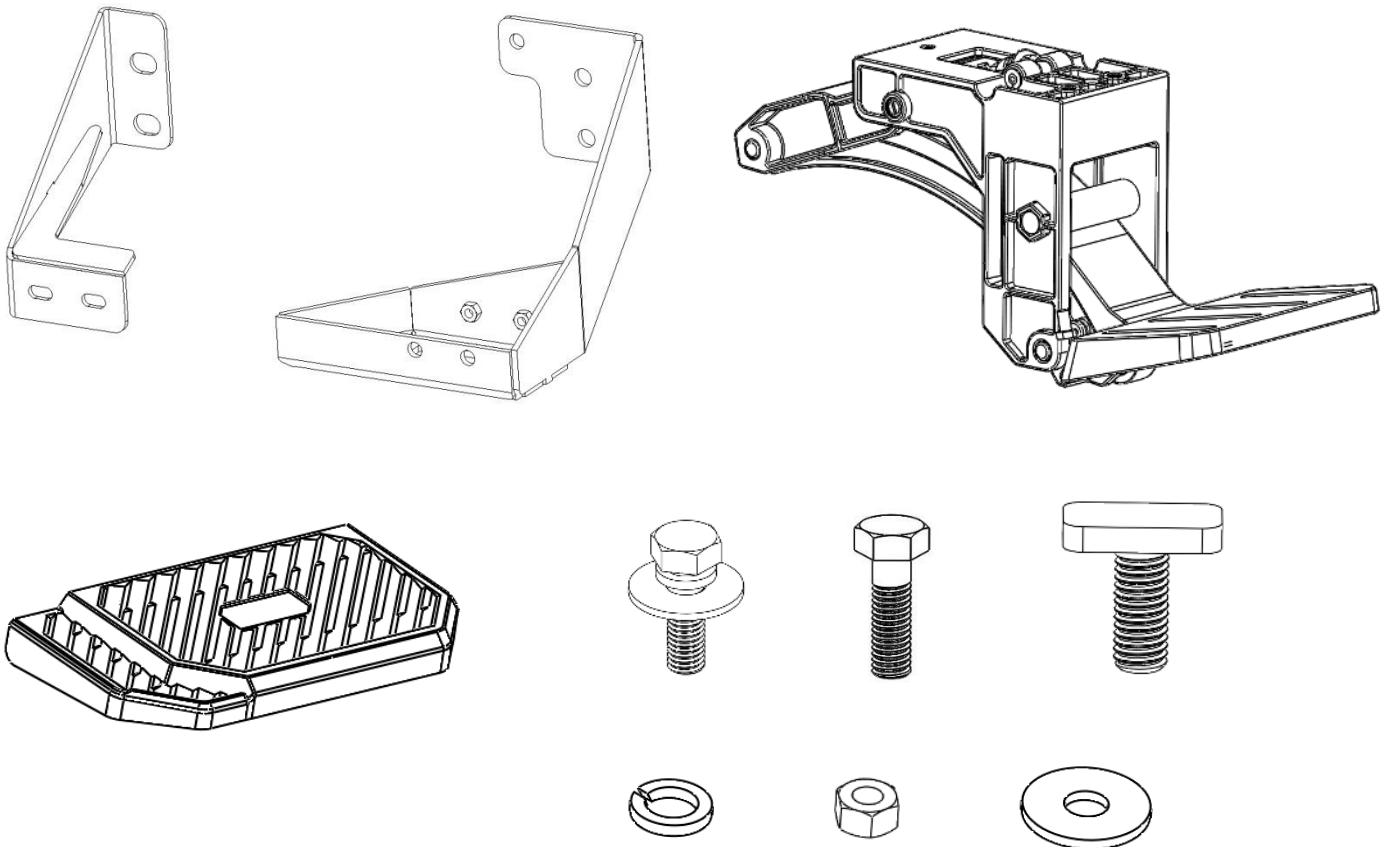
#### Torque Specs:

Size	Grade 5	Grade 8	Size	Class 8.8	Class 10.9
5/16"	15 ft/lbs	20ft/lbs	6MM	5ft/lbs	9ft/lbs
3/8"	30 ft/lbs	35ft/lbs	8MM	18ft/lbs	23ft/lbs
7/16"	45 ft/lbs	60ft/lbs	10MM	32ft/lbs	45ft/lbs
1/2"	65 ft/lbs	90ft/lbs	12MM	55ft/lbs	75ft/lbs
9/16"	95 ft/lbs	130ft/lbs	14MM	85ft/lbs	120ft/lbs
5/8"	135ft/lbs	175ft/lbs	16MM	130ft/lbs	165ft/lbs
3/4"	185ft/lbs	280ft/lbs	18MM	170ft/lbs	240ft/lbs

## INSTALLATION INSTRUCTIONS

### PARTS LIST:

Qty.	Description	Qty.	Description
1	Corner Step Base Component	5	8mm x 24mm x 2mm Flat Washers
1	Step pad	1	8mm x 20mm Hex Bolt
1	Mounting Bracket	1	8mm Lock Washer
1	Support Bracket	1	10mm x 20mm x 2mm Flat Washer
4	8mm x 25mm Combo Bolts	1	10mm Lock Washer
4	8mm x 20mm T-Bolts	1	10mm x 35mm Hex Bolt
4	8mm Nylon Lock Nuts		

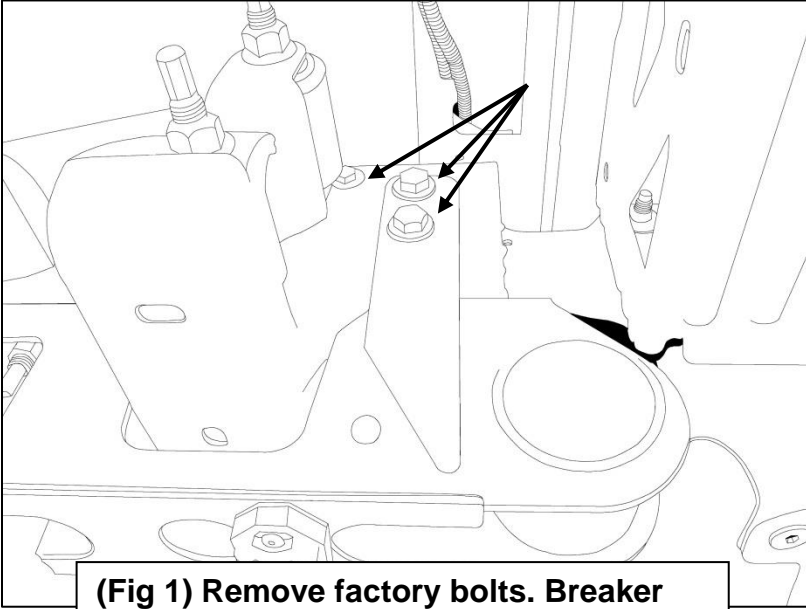


### TOOLS REQUIRED



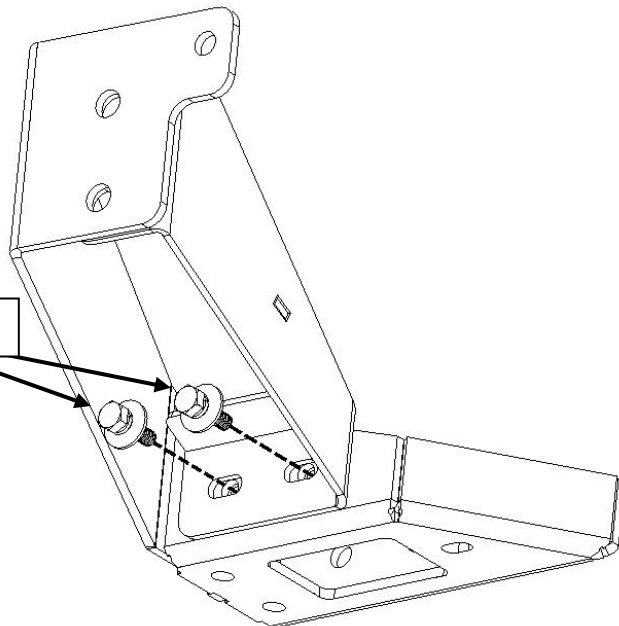
**1**

Follow Figs. 1 – 9 to install Corner Step on the Driver Side Rear Bumper Frame.

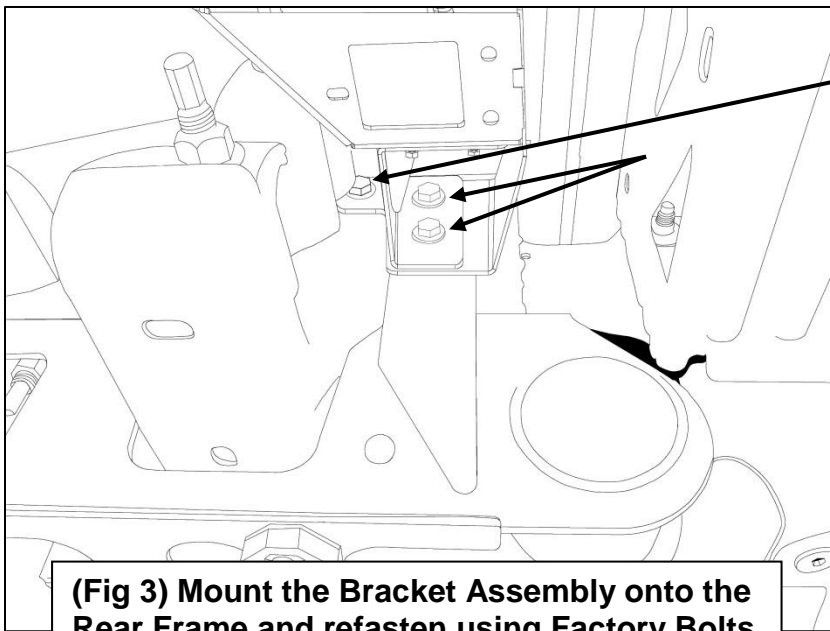


**(Fig 1) Remove factory bolts. Breaker bar may be necessary to loosen.**

**(2) 8mm Combo Bolts**

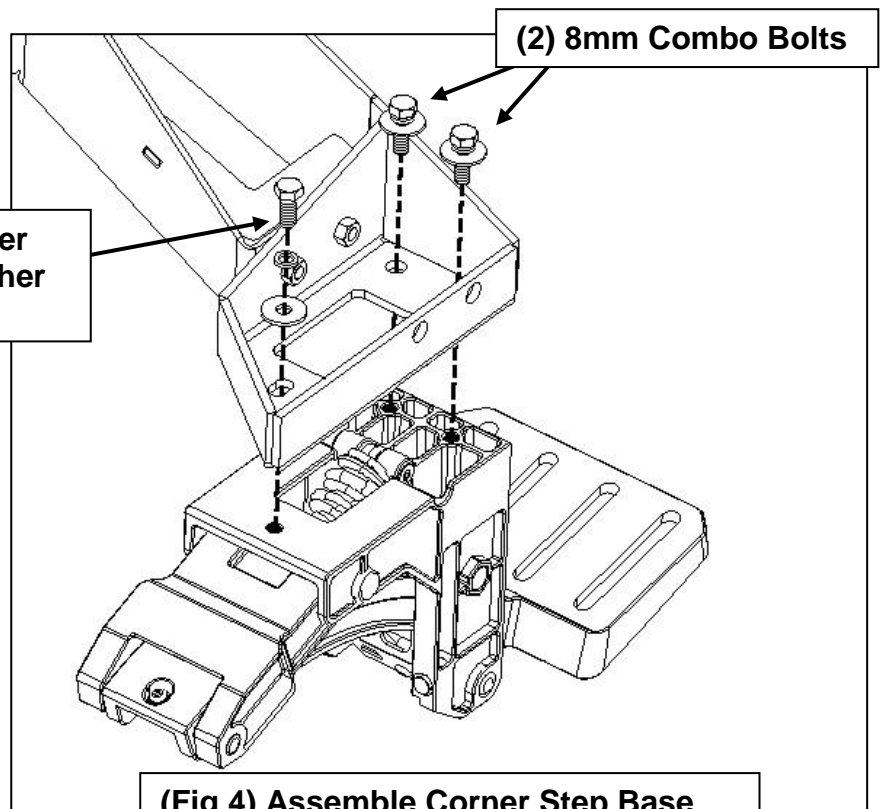


**(Fig 2) Assemble Mounting Bracket and Support Bracket with (2) 8mm Combo Bolts.**



- (1) 10mm Flat Washer
- (1) 10mm Lock Washer
- (1) 10mm Hex Bolt

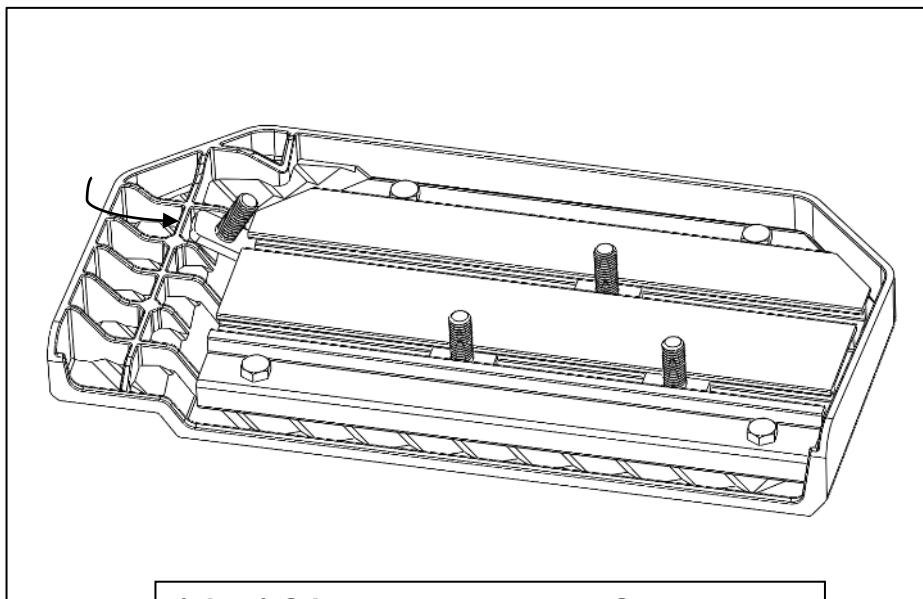
**(Fig 3) Mount the Bracket Assembly onto the Rear Frame and refasten using Factory Bolts previously removed. If the left Factory Bolt is missing, use the supplied bolt.**



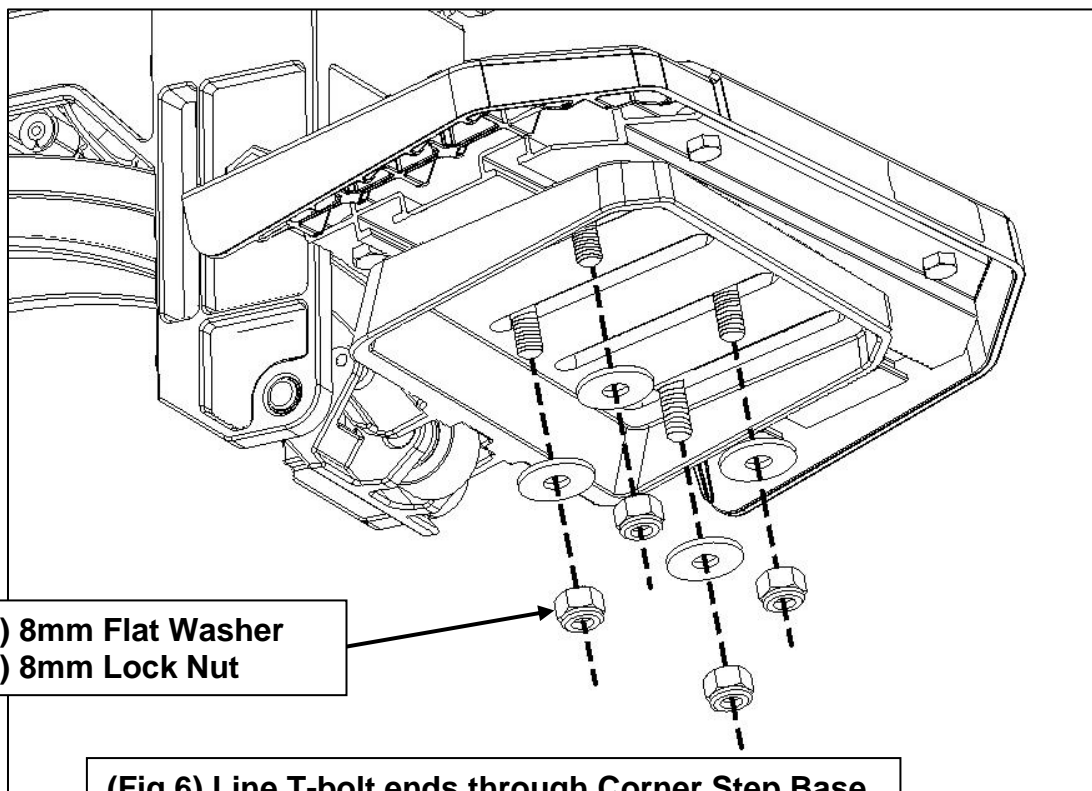
- (1) 8mm Flat Washer
- (1) 8mm Lock Washer
- (1) 8mm Hex Bolt

- (2) 8mm Combo Bolts

**(Fig 4) Assemble Corner Step Base Component onto Mounting Bracket.**



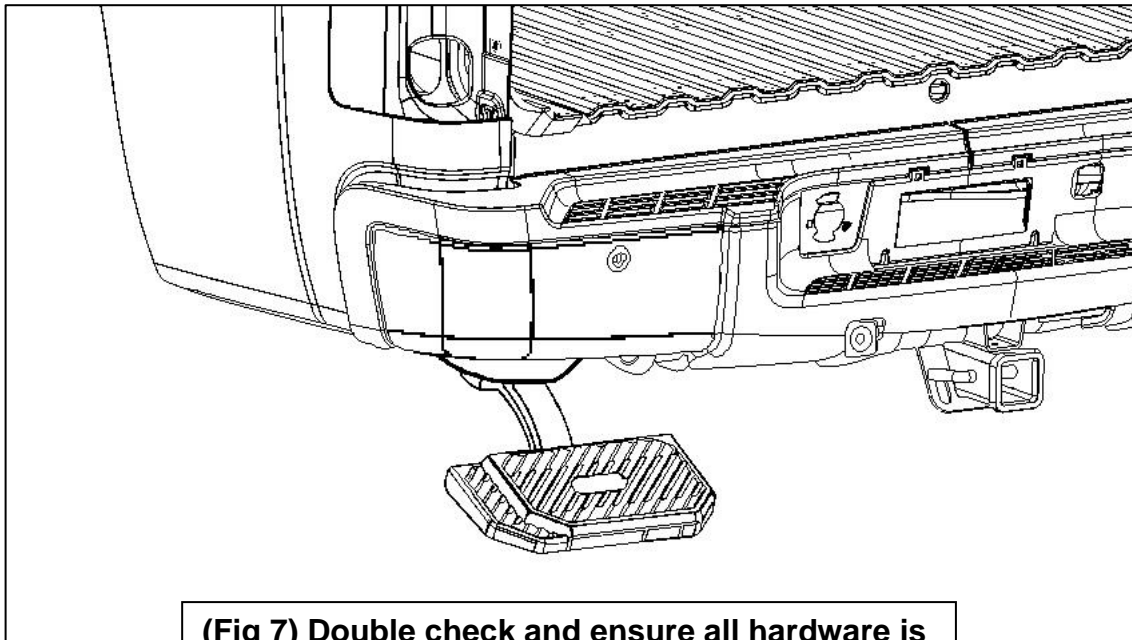
**(Fig 5) Slide T-bolts through Step under channels, two T-bolts per channel.**



**(4) 8mm Flat Washer  
(4) 8mm Lock Nut**

**(Fig 6) Line T-bolt ends through Corner Step Base component slots. Fasten Step onto Step Component and adjust to preference.**





**(Fig 7) Double check and ensure all hardware is tightened. Installation is complete.**

**By purchasing any item sold by Rough Country, LLC, the buyer expressly warrants that he/she is in compliance with all applicable, State, and Local laws and regulations regarding the purchase, ownership, and use of the item. It shall be the buyers responsibility to comply with all Federal, State and Local laws governing the sales of any items listed, illustrated or sold. The buyer expressly agrees to indemnify and hold harmless Rough Country, LLC for all claims resulting directly or indirectly from the purchase, ownership, or use of the items.**