

ROUGH COUNTRY

SUSPENSION SYSTEMS

Bolt-On Fender Flares Toyota Tacoma (16-ON) with out factory mud flaps FIT-FF971

Important: Please read instructions entirely before installing this product.

Hardware Included	QTY
Alcohol Towelette	4

Hardware Included	QTY
"X" stamped Short Clip	4
Hooked end Short Clip	2
Hooked end Long Clip	2

Bolt Kit Included	QTY
Bolts	42
Nuts	42

Ensure that both left and right hand front Fender Flares suit the profile of the vehicle. Note the areas where the Fender Flares come in contact with the vehicle. NOTE: Before fitting Fender Flares remove any moldings, strips or existing flares from the wheel arch. If there is a body side molding, mark where the molding is to be cut, alternatively the Fender Flare can be cut to go around the molding. Be sure to allow enough room for the extrusion. **No drilling of vehicle is required for Bolt-On Look Fender Flares. This is a non-drill product.**

***PRIOR TO ANY PAINTING & INSTALLATION, PRODUCT SHOULD BE THOROUGHLY INSPECTED FOR ALL COMPONENTS LISTED ABOVE. PRODUCT SHOULD ALSO BE TEST FITTED PRIOR TO ANY PAINTING & INSTALLATION. PLEASE CONTACT ROUGH COUNTRY IF YOU HAVE ANY FITMENT QUESTIONS AND OR MISSING COMPONENTS.**

PAINTING INSTRUCTIONS – If Fender Flares are being painted; do not install edge extrusion until painting is complete. Prior to painting, clean all surfaces to be painted using clean water and a mild detergent, do not use lacquer thinner or any solvent based products. Wipe completely dry. Best results will be achieved by wiping the areas to be painted with a tack rag just prior to painting. Most automotive paints can be applied directly to the Fender Flares, however some may require a primer (check paint manufacturer specifications). Good adhesion will be achieved without sanding. Select a paint (and primer if necessary) that is suitable for rigid plastics PMMA (Acrylic). If using a paint system that requires baking, do not expose the product to temperatures above 70°C (158°F). Do not fit the extrusion or any of the hardware to the Fender Flares until the paint is completely dry.



STEP 1: Attach the bolts and nuts to each Fender Flare using a 3/16" Allen key/Trox and a 1/2" wrench/socket. (wrench /socket and Allen key not supplied). Ensure inside of Fender Flares where the rubber seal is attached is clean, using the alcohol wipes provided. Wipe away any residue with a dry clean cloth.

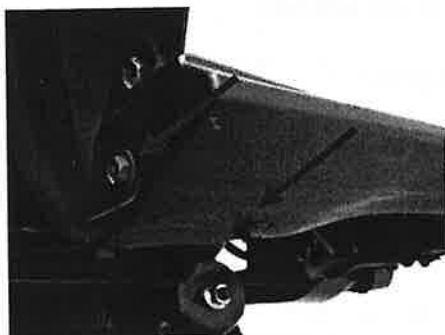


STEP 2: Attach the included rubber seal to the Fender Flares. Peel back 2" of the adhesive backing and position on the Fender Flare. Attach the seal to the Fender Flare, peeling back a few inches at a time. Ensure pressure is used to secure rubber seal to Fender Flare edge. Attach rubber seal along all areas the Fender Flare will make contact with the vehicle body.

ROUGH COUNTRY

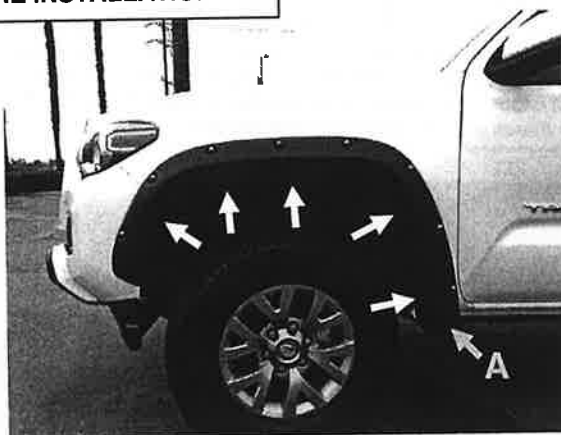
SUSPENSION SYSTEMS

Bolt-On Fender Flares Toyota Tacoma (16-ON) with out factory mud flaps FIT-FF971



IMPORTANT NOTE FOR REAR SPOILER FIN: Using a 10mm socket, remove the (2) factory screws from the rear spoiler fin as shown. Pull (2) insert s out of vehicle body, spoiler fin has double sided tape adhered to the vehicle, pull off to remove spoiler fin from vehicle as shown. Surface area on vehicle where the double sided tape was adhered to on spoiler fin will need to be cleaned prior to Fender Flare install.

FRONT FENDER FLARE INSTALLATION



STEP 3: Clean the vehicle body areas with a mild soap and water solution, where the Fender Flares will make contact. Ensure fenders are dry prior to install.

STEP 4: Hold Fender Flare on the vehicle in the position of best fit. For models with factory installed Fender Flares, note where above marked holes in Fender Flare align with existing screws in the vehicle. Make special note of "A". Remove the Fender Flare and remove the (5) above indicated screws from the factory flare with a 10mm socket. **DO NOT** remove the factory flare, the Fender Flare installs directly over the factory flare.

ROUGH COUNTRY

SUSPENSION SYSTEMS

Bolt-On Fender Flares Toyota Tacoma (16-ON) with out factory mud flaps FIT-FF971



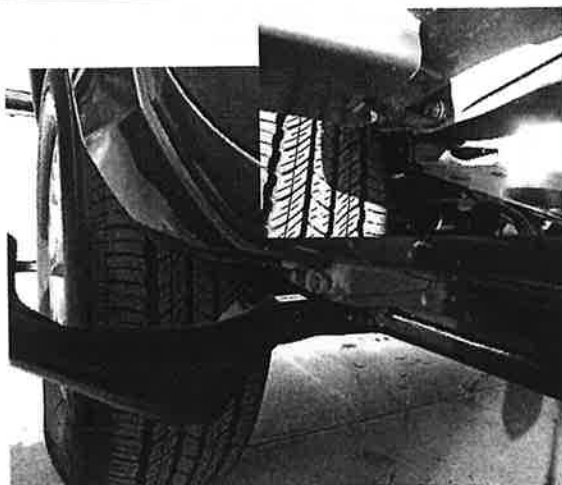
STEP 5: For models **without** factory installed Fender Flares, remove the (5) above indicated screws from the wheel liner with a 10mm socket and retain for later re-installation.



STEP 6: Again using a 10mm socket, remove the screw from the body sheet metal joint referenced in STEP 5 as Special Note area "A" and retain for later re-installation.



STEP 7: Remove Hooked end Long Clip from hardware kit and install in above shown orientation using the 10mm screw removed from the body sheet metal joint in STEP 6 as Special Note area "A". Fully tighten screw and ensure that finished position of clip is horizontal to ground, with the hook end pointing down.



STEP 8: Begin installation by engaging the hook end of the clip into the slot in the bottom of the Fender Flare and begin rotating the Fender Flare vertically up to its position of best fit.

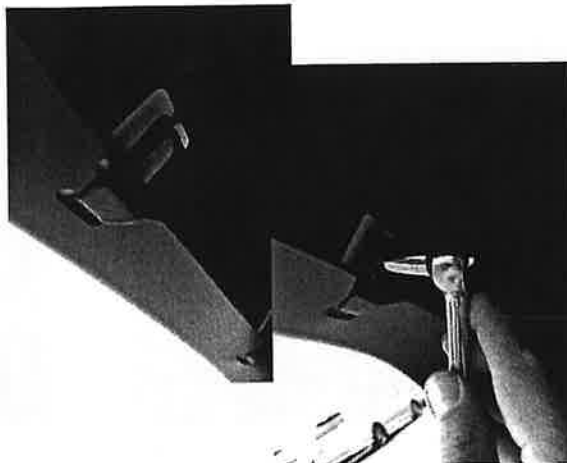
ROUGH COUNTRY

SUSPENSION SYSTEMS

Bolt-On Fender Flares Toyota Tacoma (16-ON) with out factory mud flaps FIT-FF971



STEP 9: Ensure that the rubber seal is sitting flat against the painted vehicle surface, pay special attention to front area circled above. Using (3) previously removed 10mm screws from STEP 4 or 5, reinstall at above marked hole positions. Do not fully tighten screws at this stage.



STEP 10: At remaining (2) slot positions in Fender Flare. Remove "X" stamped Short Clips from hardware kit and install as shown above, using the remaining 10mm screws removed in STEP 4 or 5. Do not fully tighten screws at this stage.



STEP 11: If necessary, make minor adjustments to the flares position to achieve the best fit for your vehicle and to ensure that the rubber seal is sitting flat against the painted vehicle surface. When satisfied fully tighten all (5) screw locations, in the above order in which they were just installed. Repeat install for opposite side.

ROUGH COUNTRY

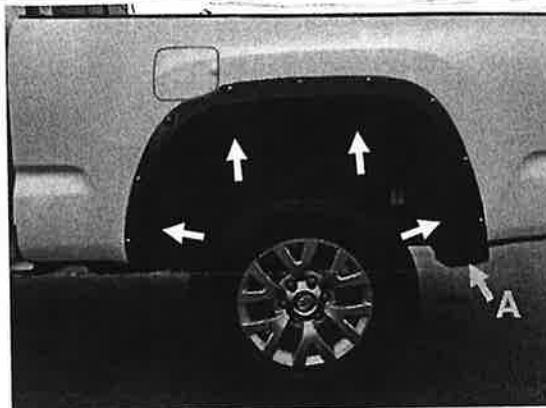
SUSPENSION SYSTEMS

Bolt-On Fender Flares Toyota Tacoma (16-ON) with out factory mud flaps FIT-FF971

REAR FENDER FLARE INSTALLATION



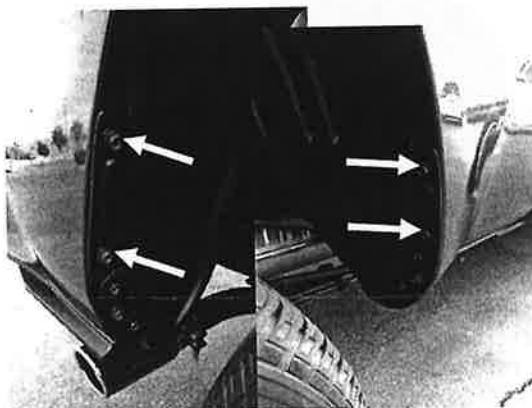
STEP 12: Clean the vehicle body areas with a mild soap and water solution, where the Fender Flares will make contact. Ensure fenders are dry prior to install.



STEP 13: Hold Fender Flare on vehicle in the position of best fit. For models **with** factory installed Fender Flares, note where above marked holes in Fender Flare align with existing screws in the vehicle. Make special note of "A". Remove the Fender Flare and remove the (4) above indicated screws from the factory flare with a 10mm socket. **DO NOT** remove the factory flare, the Fender Flare installs directly over the factory flare.



STEP 14: For models **without** factory installed Fender Flares, remove **only** the first (4) above indicated screws, from top to bottom of the fender, (2) each side, with a 10mm socket and retain for later re-installation.

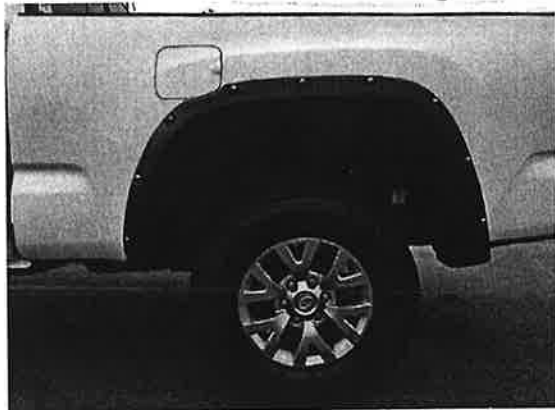


STEP 15: Remove **ONLY** these (4) above indicated screws as mentioned in previous STEP 14, with a 10mm socket for models **without** factory installed Fender Flares. Leave all other remaining screws in wheel liner area. Fender Flare will install directly over the remaining screws.

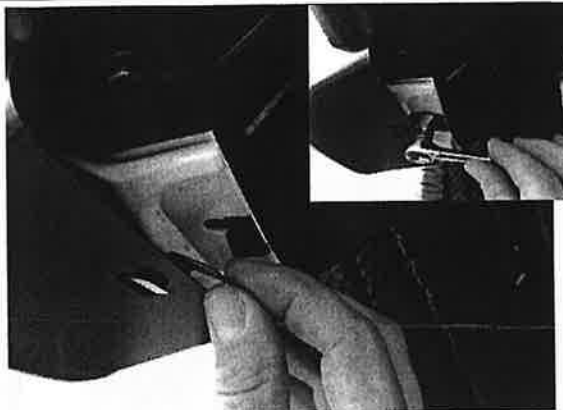
ROUGH COUNTRY

SUSPENSION SYSTEMS

Bolt-On Fender Flares Toyota Tacoma (16-ON) with out factory mud flaps FIT-FF971



STEP 16: Re-Install Fender Flare in position of best fit, ensure that the rubber seal is sitting flat against the painted vehicle surface. Using (4) previously removed 10mm screws from STEP 14 or 15, reinstall at above mounting hole positions. Do not fully tighten screws at this stage.



STEP 17: Remove remaining Hooked end Short Clip from hardware kit. Remove 10mm screw from previously noted area "A" in STEP 13 that aligns with mounting slot in Fender Flare. Install hook end of short clip into Fender Flare as shown above and re-install 10mm screw.



STEP 18: If necessary, make minor adjustments to the flares position to achieve the best fit for your vehicle and to ensure that the rubber seal is sitting flat against the painted vehicle surface. When satisfied fully tighten all screw locations, in the above order in which they were just installed. Repeat install for opposite side.