

ROUGH COUNTRY

925700900

09-18 1500 Ram / 2010-25 2500/3500 White /Amber Running Board

Thank you for choosing Rough Country for all your vehicle needs.

Please read instructions before beginning installation. Check the kit hardware against the kit contents shown below. Be sure you have all needed parts and know where they go.

If question exist, please call us @1-800-222-7023. We will be happy to answer any questions concerning this product.

Check all fasteners for proper torque. Check to ensure for adequate clearance between all components.

Periodically check all hardware for tightness.

Kit Contents:

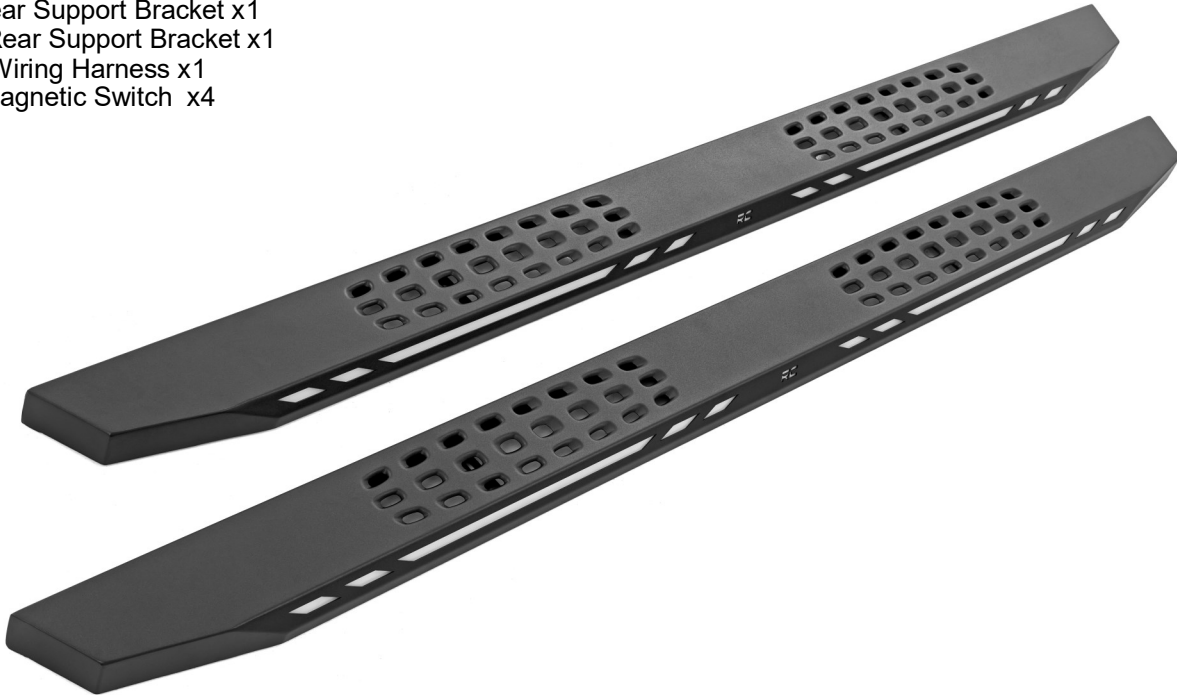
White / Amber LED Step Boards x2
 Dr Fr Mounting Bracket x1
 Pass Fr Mounting Bracket x1
 Dr Center Mounting Bracket x1
 Pass Center Mounting Bracket x1
 Dr Rear Mounting Bracket x1
 Pass Rear Mounting Bracket x1
 Dr Fr Support Bracket x1
 Pass Fr Support Bracket x1
 Dr Center Support Bracket x1
 Pass Center Support Bracket x1
 Dr Rear Support Bracket x1
 Pass Rear Support Bracket x1
 Wiring Harness x1
 Magnetic Switch x4

Tools Needed:

10mm Wrench or Socket
 13mm Wrench or Socket

Hardware Included:

8mm 30mm T- Bolt x6
 8mm Bolt Plate x6
 8mm Hex Nut x6
 6mm Lock Nut x12
 8mm Lock Nut x18
 6mm x 25mm Hex Bolt x12
 8mm x30mm Hex Bolt x18
 8mm Flat Washer x36
 8mm Lock Washer x12
 6mm Flat Washer x24
 8mm Plastic Block x6



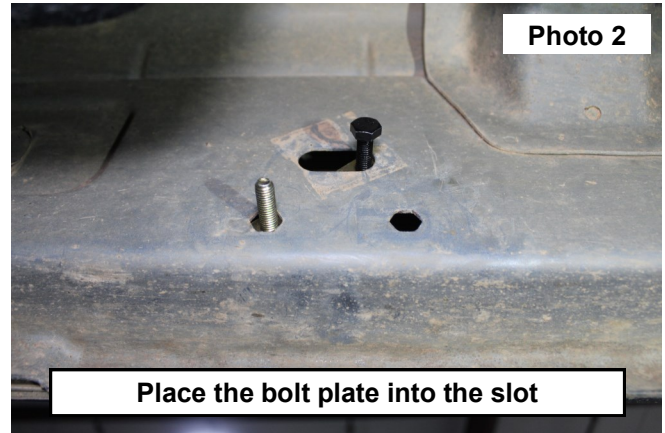
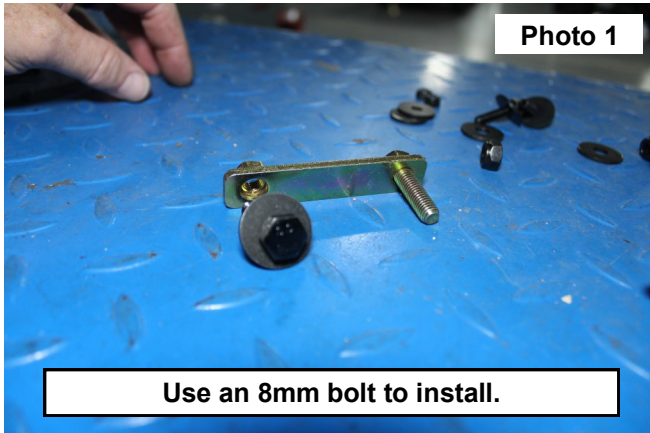
Torque Specs:

Size	Grade 5	Grade 8	Size	Class 8.8	Class 10.9
5/16"	15 ft/lbs	20ft/lbs	6MM	5ft/lbs	9ft/lbs
3/8"	30 ft/lbs	35ft/lbs	8MM	18ft/lbs	23ft/lbs
7/16"	45 ft/lbs	60ft/lbs	10MM	32ft/lbs	45ft/lbs
1/2"	65 ft/lbs	90ft/lbs	12MM	55ft/lbs	75ft/lbs
9/16"	95 ft/lbs	130ft/lbs	14MM	85ft/lbs	120ft/lbs
5/8"	135ft/lbs	175ft/lbs	16MM	130ft/lbs	165ft/lbs
3/4"	185ft/lbs	280ft/lbs	18MM	170ft/lbs	240ft/lbs

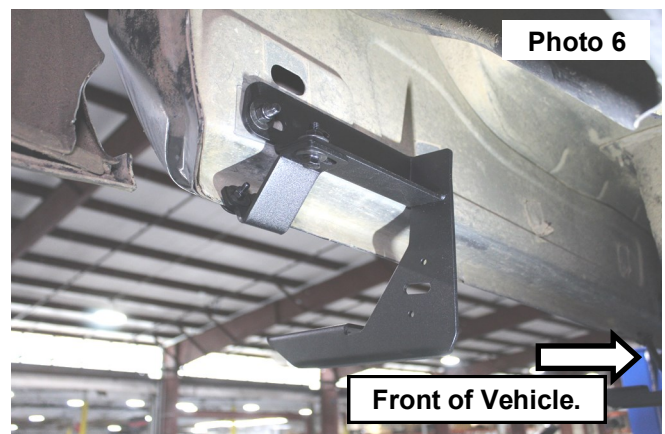
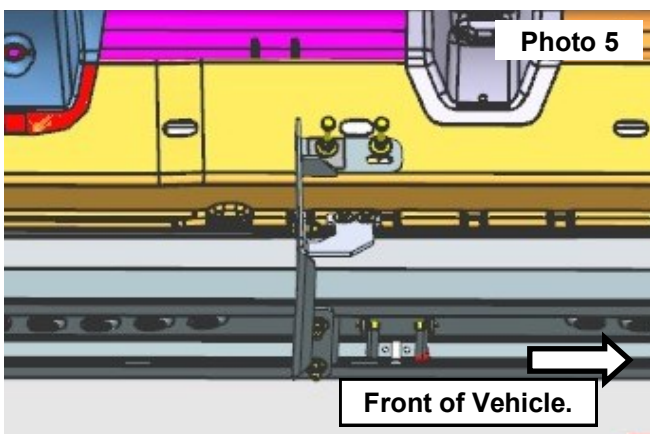
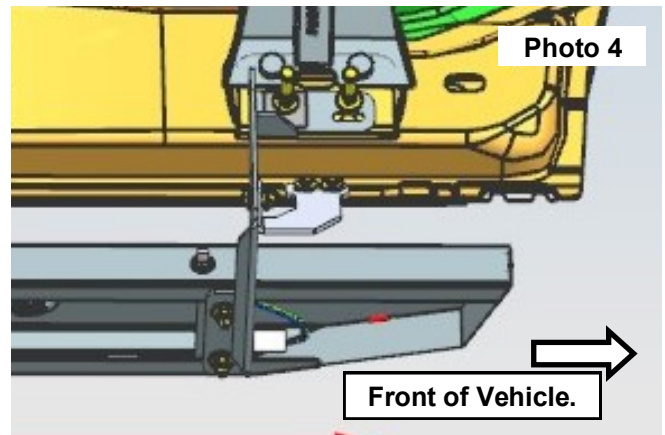
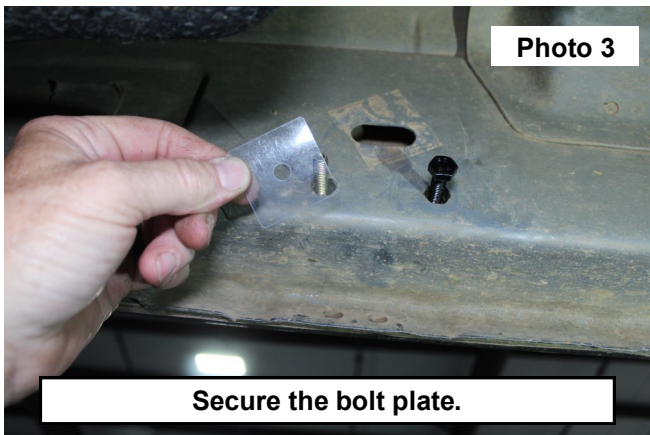


INSTALLATION INSTRUCTIONS

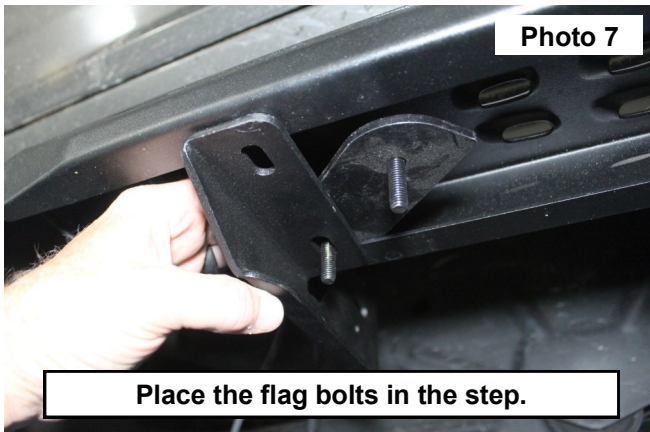
1. Insert one of the 8mm bolts into the bolt plates. **See Photo 1.**
2. Place the bolt plate into the slot located on the inside of the inner rocker. Then insert the stud into one of the hex holes below the slot. **See Photo 2.**



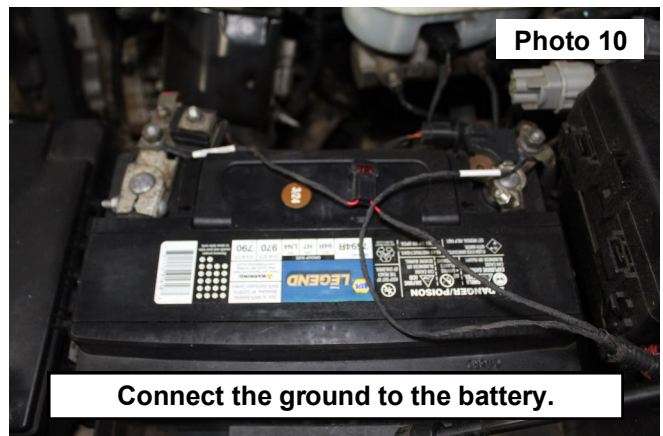
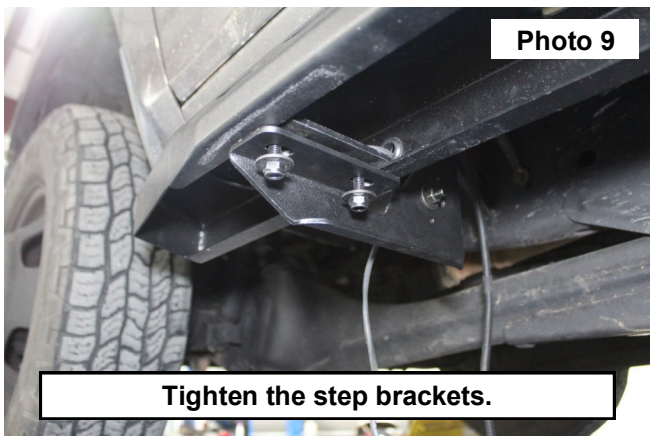
3. Secure the bolt plate stud using (1) of the plastic blocks supplied in the hardware kit. **See Photo 3.**
4. Remove the 8mm bolt used to install the bolt plate in Photo 1. Use this bolt to install the remaining driver and passenger side bolt plates and plastic blocks into the inner rocker panel at each mounting location.
5. Install the step bracket mounting holes over the stud and secure, using (1) 8mm large washer and (1) 8mm Nylock Nut on the stud. Align the nut side of the bolt plate with the mounting hole and secure using (1) 8mm large washer, (1) 8mm lock washer and (1) 8mm hex head bolt.
6. Align the step plate support bracket with the (2) holes the pinch weld and the single hole placed onto the step plate side, secure using (2) 6mm x25mm hex head bolts, (4) flat washers and (2) nylock nuts. Secure the side of the support bracket to main bracket using (1) 8mm hex head bolt, (2) flat washers and (1) nylock nut.
7. Use provided 8mm & 6mm hardware referencing above in steps 5 and 6 for the installation of the driver / passenger side step brackets and support brackets. Front step brackets center step brackets and the rear step brackets are shown in **Photos 4, 5 and 6.**



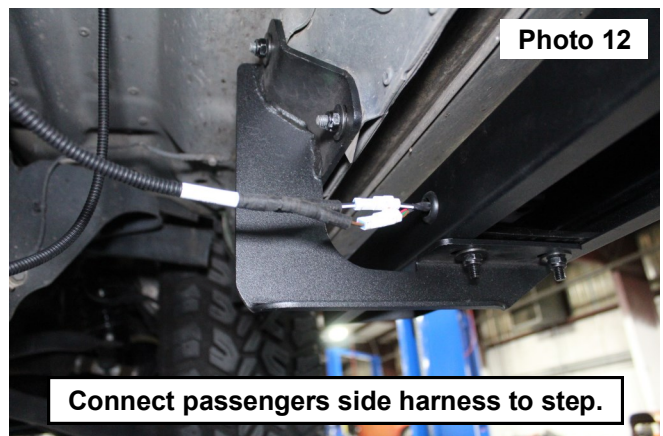
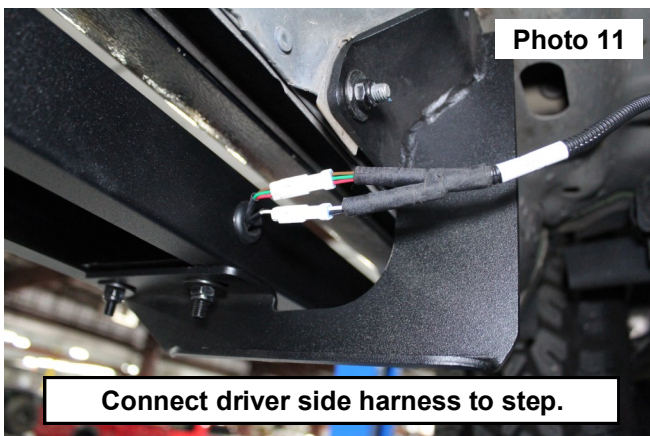
8. Locate the flag bolts. Use the radius side of the bracket to seat (3) flag bolts into the bottom side of the step plate as shown in **See Photo 7**.
9. Center the step to the body of the vehicle and tighten all step hardware. **See Photo 8 and 9**.
10. Repeat the bracket installation process for passenger side.



11. Install the wiring harness starting at the battery. **Connect the ground only at this time. See Photo 10.**



12. Continue the passengers side wiring down the fire wall to the step, locate the plugs at the step and connect the driver and passenger connections. **See Photos 11 and 12.**



13. Remove the scuff plate from the driver and passengers side of the vehicle. **See Photo 13.**
14. Lift the carpet to expose the floor of the cab. On the Driver and Passenger side, Drill a 3/8 hole into the removable plugs for a wiring access hole. **Note: Take care not to damage components under the body when drilling.** Then install the wiring harness on both sides. **See Photos 14 and 15.**



Remove the scuff plate.



Route the harness through the floor.

15. Route the wiring across the vehicle to the passengers side and secure inside the cab using the plugs under the carpet. **See Photo 16.**



Route the harness through the floor.

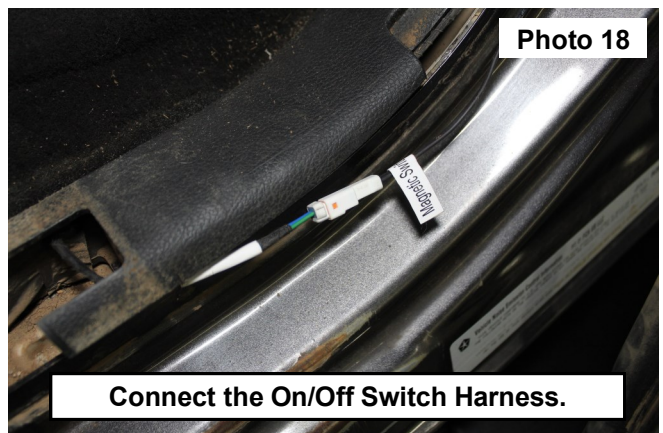


Run wiring across to passengers side.

16. Locate the On/ Off function switch, clean the desired area to place the switch. Switch shown installed in a void on the dash. Route the wiring toward the access hole in the floor under the carpet. **See Photo 17.**
17. Connect the plug from the switch to the wiring harness under the carpet. **See Photo 18.**

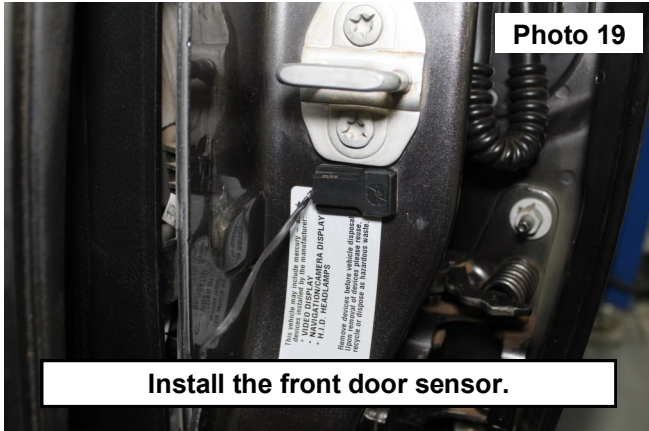


Install the On/Off Switch.

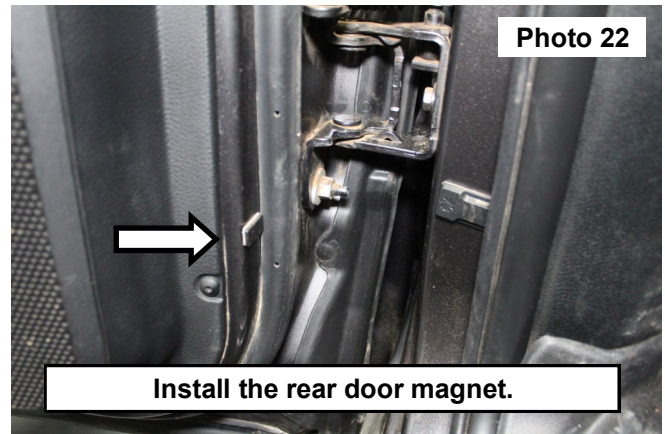
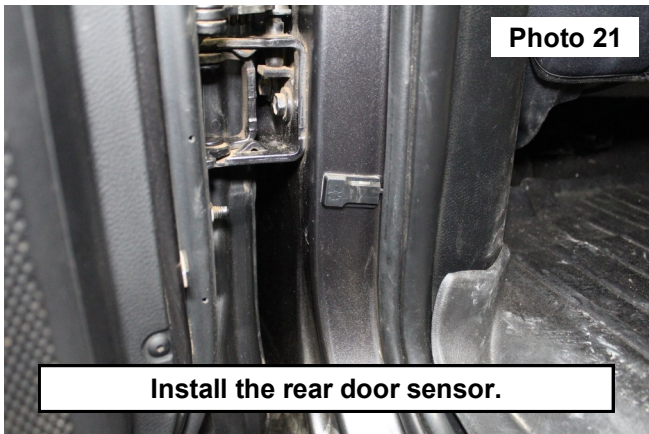


Connect the On/Off Switch Harness.

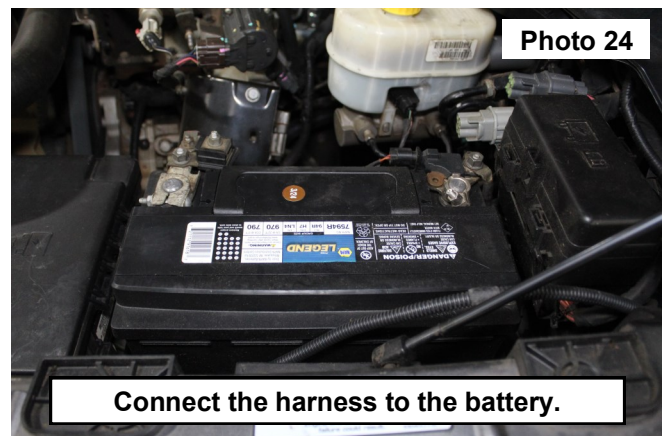
18. Select a location by the latch on the front door and place the sensor. Use the double sided tape on the back of the sensor to apply to the cab of the vehicle. **See Photo 19.** Repeat on passengers side.
19. Align the door magnet with the sensor applied by the latch. **Note:** The magnet can be taped onto the door to set the correct placement before the double sided tape is applied. Place the magnet onto the door using the double sided tape on the back of the magnet. **See Photo 20.** Repeat on passengers side.



20. Select a location for the rear door sensor above the door check stop limiter and place the sensor to the cab of the vehicle. Use the double sided tape on the back of the sensor to apply to the cab of the vehicle. **See Photo 21.** Repeat on passengers side.
21. Align the door magnet with the rear sensor. **Note:** The magnet can be taped onto the door to set the correct placement before the double sided tape is applied. Place the magnet onto the door using the double sided tape on the back of the magnet. **See Photo 22.** Repeat on passengers side.



22. Replace the interior scuff plate. Repeat on passengers side. **See Photo 21.**
23. Connect the wiring harness to the positive and negative battery connections. **See Photo 22.**



By purchasing any item sold by Rough Country, LLC, the buyer expressly warrants that he/she is in compliance with all applicable, State, and Local laws and regulations regarding the purchase, ownership, and use of the item. It shall be the buyers responsibility to comply with all Federal, State and Local laws governing the sales of any items listed, illustrated or sold. The buyer expressly agrees to indemnify and hold harmless Rough Country, LLC for all claims resulting directly or indirectly from the purchase, ownership, or use of the items.

