



WARNING: This product contains a chemical known to the State of California to cause Cancer and Reproductive Harm. For more information, go to www.P65Warnings.ca.gov.

2020-UP CHEVY 2500, 3500 NON-DUALLY TRADITIONAL STYLE FLARES

PRIOR TO INSTALLATION

- A) Install the flares according to these written instructions with the hardware provided. **WARNING:** Failure to install according to these instructions will invalidate the warranty. This includes, but is not limited to, using alternative installation methods, hardware, or materials. **DO NOT USE:** Loctite, Superglue, or similar products on the hardware or the flares. *Install flares on cleaned vehicle surfaces.*
- B) **Fit:** Verify the fit of the flares to vehicle prior to installation (some filing, sanding, or cutting may be necessary to ensure proper fit).
- C) **Painting:** (Optional) If paint is desired it must be done prior to installing flares on vehicle. Clean outer surface with a good grade degreaser. **DO NOT USE LACQUER THINNER OR ENAMEL REDUCER AS A DEGREASER.** Wipe outer surface thoroughly with a tack rag prior to paint. Application of plastic adhesion promoter for ABS plastic as per your paint system manufacturer's recommendations is required. Paint flares using a high-quality enamel, or polyurethane automotive paint. If painting edge trim (not recommended), use a flex additive.
- D) **Performance:** Using larger tires may increase the area required to turn the vehicle. Some tire/rim combinations may require lowering bump stops and or installing steering stops to prevent tire from contacting flare.
- E) **Exhaust System:** Modifications may be necessary to maintain a minimum 4" clearance between flares and exhaust pipes. (Exhaust gases should not vent directly onto flares)
- F) **Metal Protection:** All exposed fasteners and bare metal should be treated with rust resistant paint **BEFORE** installing flares. Spray inner fender wells with undercoating **AFTER** flare attachments have been completed.
- G) **Decals:** Flares may interfere with existing decals on vehicle. If you wish, remove decals prior to installation of flares.
- H) **Care & Cleaning:** Fender flares are built to last; any detergent you use to wash your vehicle is sufficient to clean the flare. Do not use any harsh abrasive detergents.

TOOLS FOR EASY INSTALLATION:

- Soft Cloth or Alcohol Wipe
- #2 Phillips Screwdriver
- Socket Wrench
- 10mm socket
- Awl
- Grease Pencil
- T15 Torx Bit
- Utility Knife

PLEASE READ: Dirt and debris can become lodged between the fender flares and the vehicle's fenders, causing scratching and paint wear from vibration. Manufacturer is not responsible for any damage, and the installation of our fender flares is done with the buyer's understanding that this scratching and paint wear may occur.

LIMITED LIFETIME WARRANTY AGAINST ANY MANUFACTURING DEFECTS: To claim warranty you must provide Proof of Purchase.



INCLUDED IN HARDWARE KIT:

1.



Push-In Pocket
Hardware, Brushed
Metal
44 pcs

2.



Push-In Pocket
Hardware, Black
44 pcs

3.



Short "U" Clip
4 pcs

4.



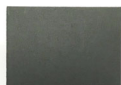
Long "U" Clip
10 pcs

5.



Truss-Head Screw
14 pcs

6.



Foam Tabs
10 pcs

7.



Wiper Style Edge
Trim
374 inches



IF YOU PURCHASED GLOSSY BLACK FLARES (CODE "RCGB"):



Prior to beginning installation process, peel the protective liner from each plastic piece included in the flare kit – all flares and inner pieces.

NOTE: It will be difficult to remove liner once edge trim and hardware are installed.

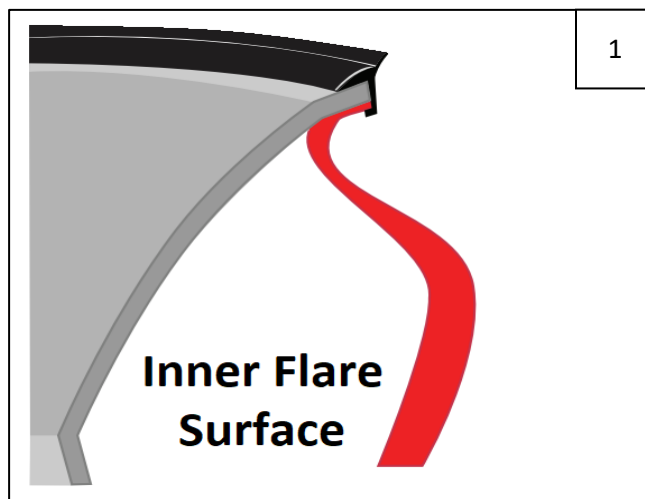
Once liner is removed, take care not to scratch flare surfaces. If flare needs to be cleaned, wipe gently with a clean soft cloth.



SECTION 1: EDGE TRIM INSTALLATION

Peel 2-3 inches of red vinyl backing away from supplied edge trim tape. Applying the adhesive side of the edge trim to the inner side of the flare, affix the edge trim to the top edge of the flare (the portion that comes in contact with the side of the vehicle).

Press edge trim into place along the top edge of the flare in one-foot increments, pulling red vinyl backing free as you continue to work your way around the top edge of the flare. Trim edge trim flush with ends of flare.



SECTION 2: PUSH-IN POCKET HARDWARE INSTALLATION



Peel liner from tape on Push-In Pocket Hardware (brushed metal or black as preferred). NOTE: There will be extra Push-In Pocket Hardware.

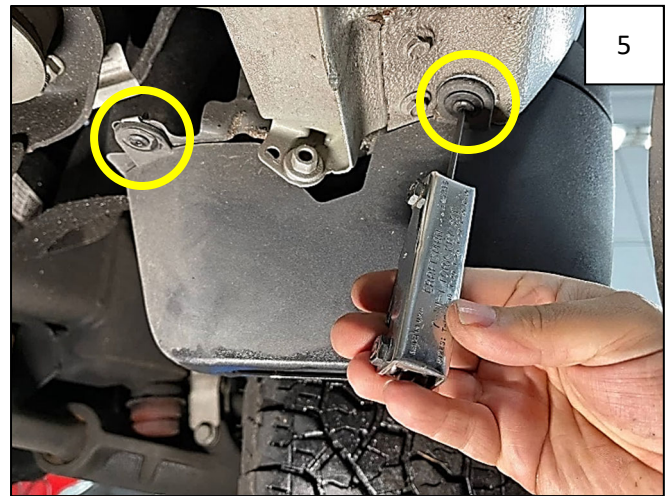


Insert Push-In Pocket Hardware into each flare pocket hole (on outer flare surface, 8 places each front flare, 9 places each rear). Push in to engage clip and tape adhesion.

SECTION 4: FRONT FLARE INSTALLATION



Using a T15 Torx bit, remove 3 factory fasteners, indicated by arrows, holding the factory splash guard. Retain all screws for future use; some will be used.



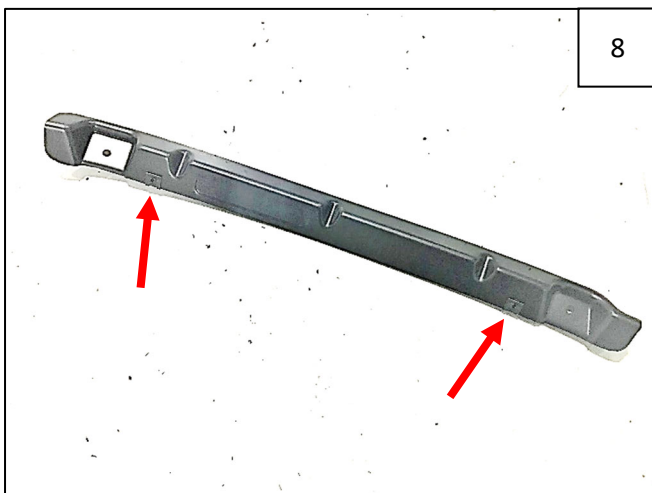
Remove 2 factory screws from underside of splash guard. Discard factory splash guard.



Reinstall 2 factory screws indicated by arrows, to keep the wheel well liner in place (outermost hole will be used in the flare installation).



Attach 2 supplied Short "U" Clips to the supplied Inner Bracket as shown. Driver Side Inner Bracket is marked as "LF" and Passenger Side Inner Bracket is marked as "RF."



Inner Bracket Short "U" Clip locations.

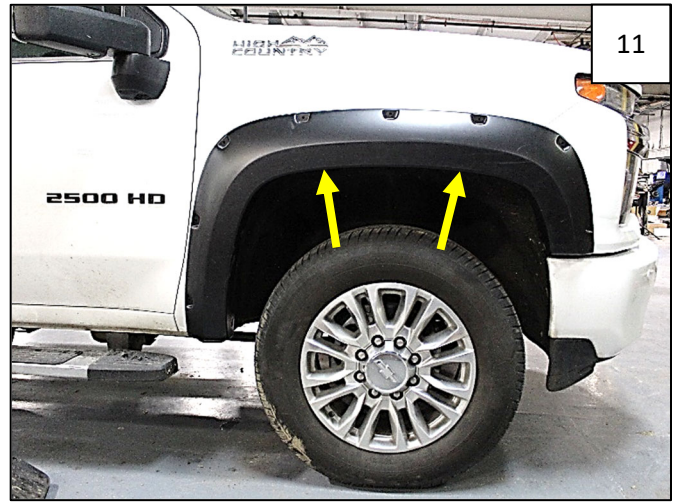


Remove 5 factory T15 Torx screws from wheel well as shown. Retain.



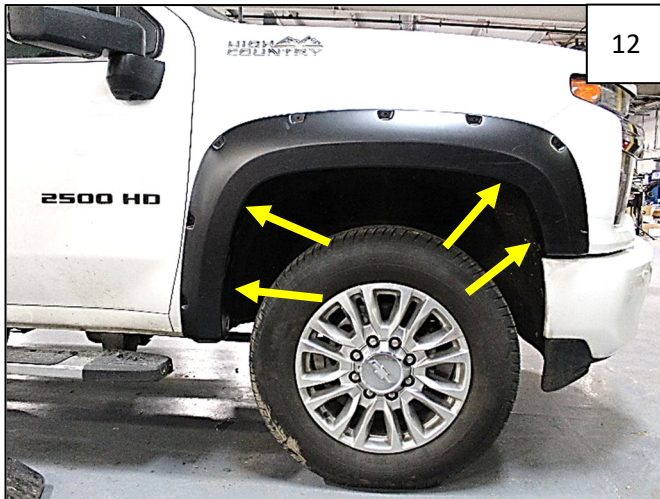
10

Install Inner Bracket using 2 T15 Torx screws retained in Step 9. Tighten both fasteners.



11

Align flare on vehicle and install 2 supplied Truss-Head Screws into clips on Inner Bracket as indicated by arrows.



12

Reinstall 4 factory screws through holes in flare and into holes in fender.



13

Apply pressure to flare towards vehicle body at each fastening point and tighten all fasteners.



14

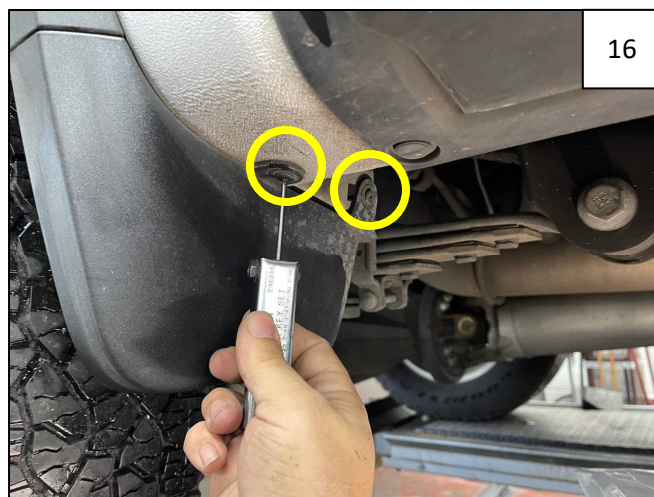
Complete Front Flare Installation.



SECTION 5: REAR FLARE INSTALLATION



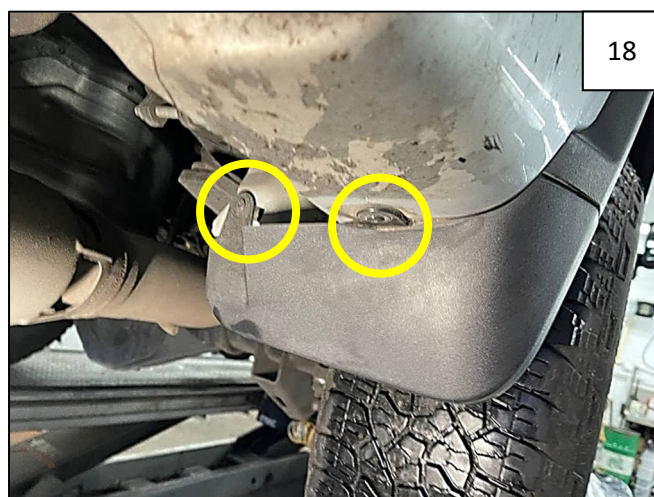
Remove 3 factory T15 Torx screw on the forward rear splash guard. Retain all factory screws; some will be used.



Remove 2 factory screws from underside of splash guard. Remove and discard factory splash guard.



Remove 3 factory screws from the rearward rear splash guard.



Remove 2 factory screws from underside of splash guard. Remove and discard factory splash guard.



Reinstall 2 factory screws in front of wheel well as shown to keep wheel well liner in place (outermost hole will be used in the flare installation).



Reinstall 2 factory screws in rear of wheel well as shown to keep wheel well liner in place (outermost hole will be used in the flare installation).



Hold the flare on the fender and mark 5 holes using a grease pencil.



Hole locations.



Peel liner from a supplied Foam Tab and center tab over each mark made in Step 21, folding over lip of wheel well.



Slide a supplied Long "U" Clip over each foam tab, making edge of clip flush with outer edge of factory flare as shown.



Hold flare on fender. Start 2 factory screws removed in Steps 15 and 17 as shown.



Start 3 supplied Truss-Head Screws through upper holes in flare and into clips installed in Step 24.



Apply pressure to flare towards vehicle body at each fastening point and tighten all fasteners.



Completed Rear Flare installation.